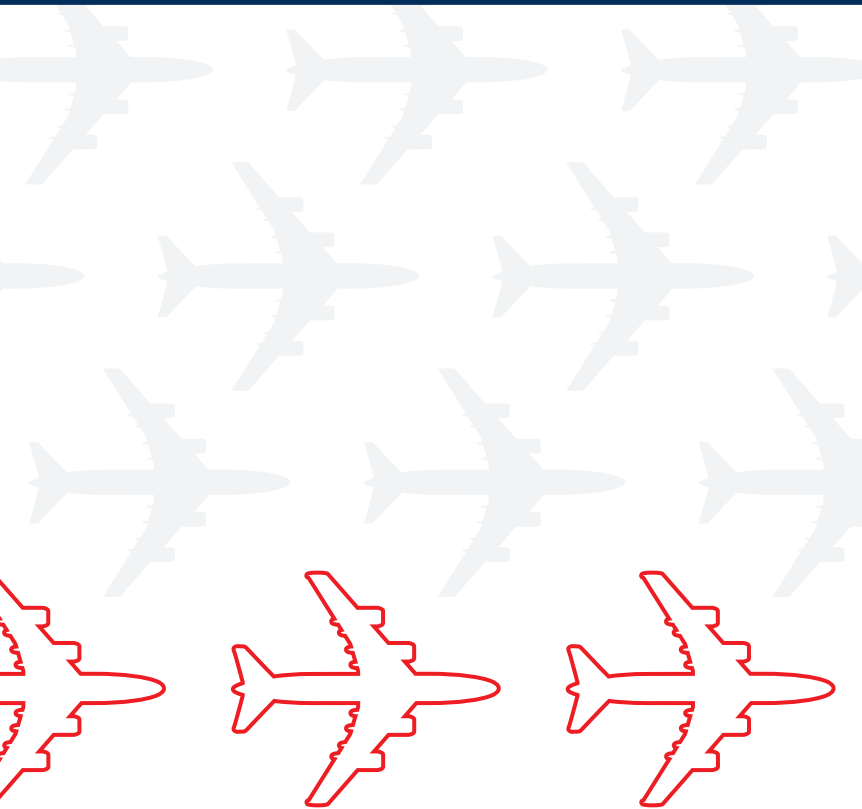




2023

**ILLINOIS PUBLIC
USE AND PUBLICLY
OWNED AIRPORT
INVENTORY REPORT**



**Illinois Department
of Transportation**

2023

ILLINOIS PUBLIC USE AND PUBLICLY OWNED AIRPORT INVENTORY REPORT

INTRODUCTION

The purpose of this report is to compile, in one document, information on the characteristics and the physical condition of the various elements of the publicly owned and public use airports in Illinois as well as data on the actual use of the publicly owned airports in the state of Illinois. For this report “public use” refers to both publicly owned and publicly use airports.

Prepared by:

Illinois Department of Transportation
Office of Planning and Programming
2300 South Dirksen Parkway
Springfield, IL 62764

8/2023

TABLE OF CONTENTS

Distribution of Illinois Public Use Airports	2
Illinois Public Use Airport Locations	3
Public Use Airports in Northeastern Illinois	4
Public Use Airports in Southwestern Illinois	5
Airport Activity	6
Table 1: Illinois Airport Activity Summary	6
Table 2: Last 15 Years of Enplanements at Illinois Primary Airports	10
Table 3: Based General Aviation Aircraft	13
Table 4: Last 15 Years of Cargo Data as Reported by FAA (Landed Weight Pounds)	17
Table 5: Illinois Public Airport Sponsors	18
Table 6: Illinois Airports with an Air Traffic Control Tower	19
Illinois Scheduled Air Passenger Services	20
Table 7: Domestic Non-Stop Destinations - July 2023	21
Table 8: International Non-Stop Destinations	28
Table 9: Airlines Serving Illinois Airports – July 2023	30
Physical Characteristics	32
Table 10: Illinois Public Use Airports Runway Characteristics	34
Table 11: Illinois Airport of the Year Winners	44
Airport Pavement Management System	46
Table 12: APMS Results	47
Number of Each Paved Runway at Illinois Public Use Airports	68
Surface Weather Observation Stations	69
Table 13: Illinois Surface Weather Observation Stations	70
Illinois AWOS/ASOS Locations	73
Aviation Economic Impact Analysis	74
Table 14: Illinois Public Use Airports Economic Impact	75
Table 15: Longest Runway	79
References	83
Contact Information	84

DISTRIBUTION OF ILLINOIS PUBLIC USE AIRPORTS

These maps show all public use airports in the State of Illinois and change as new airports open, existing ones close, or as they change ownership/function. All airports must be certified by the Illinois Department of Transportation - Aeronautics.

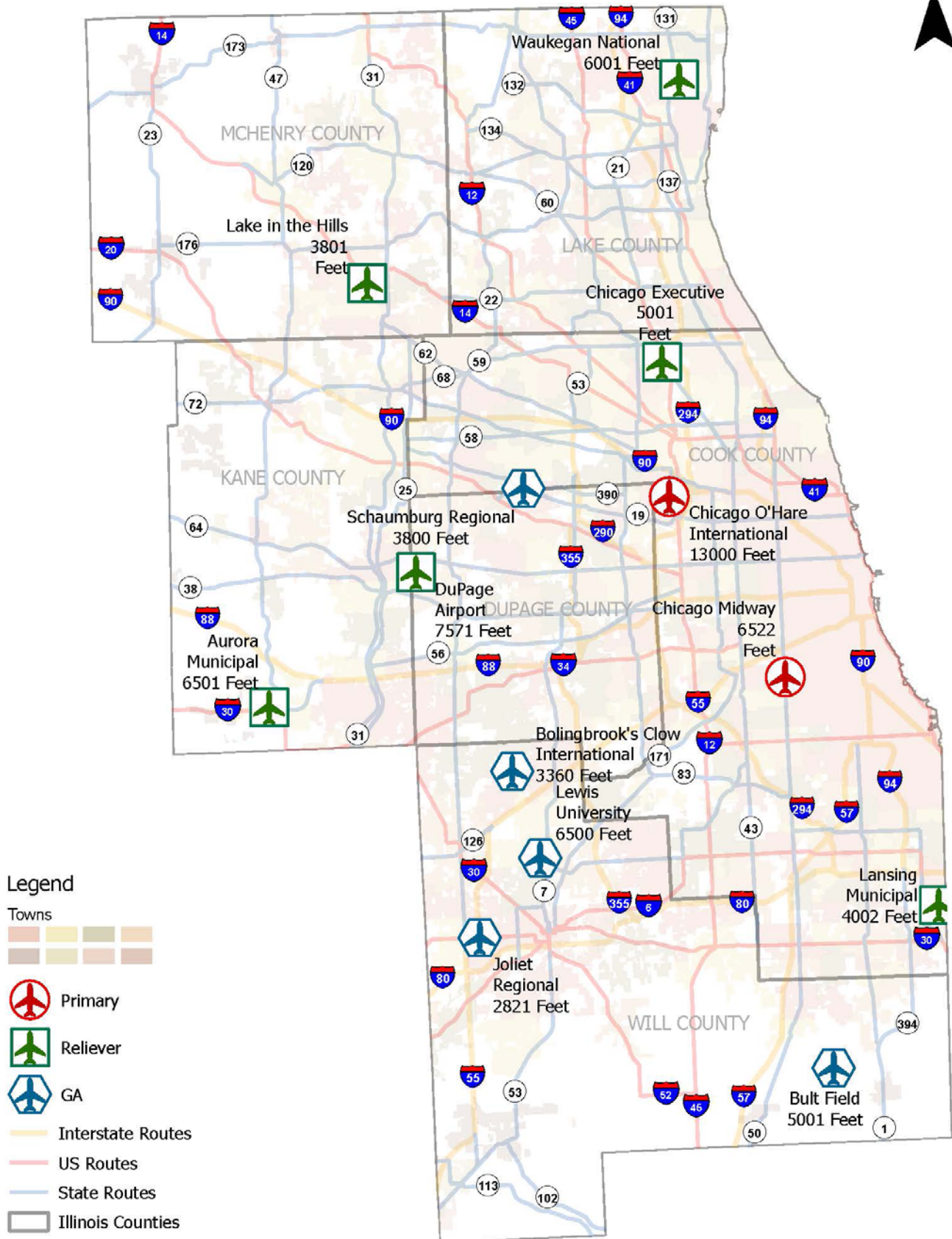
The Illinois Public Use Airport Locations map shows all airports in the State of Illinois which are public use. They are also identified according to three airport categories **Primary**, **Reliever** or **General Aviation**.

Public Use Airports in Northeastern Illinois and Public Use Airports in Southwestern Illinois are enlargements of the Chicago area and the St. Louis Metro East area. The length of the longest runway is indicated.

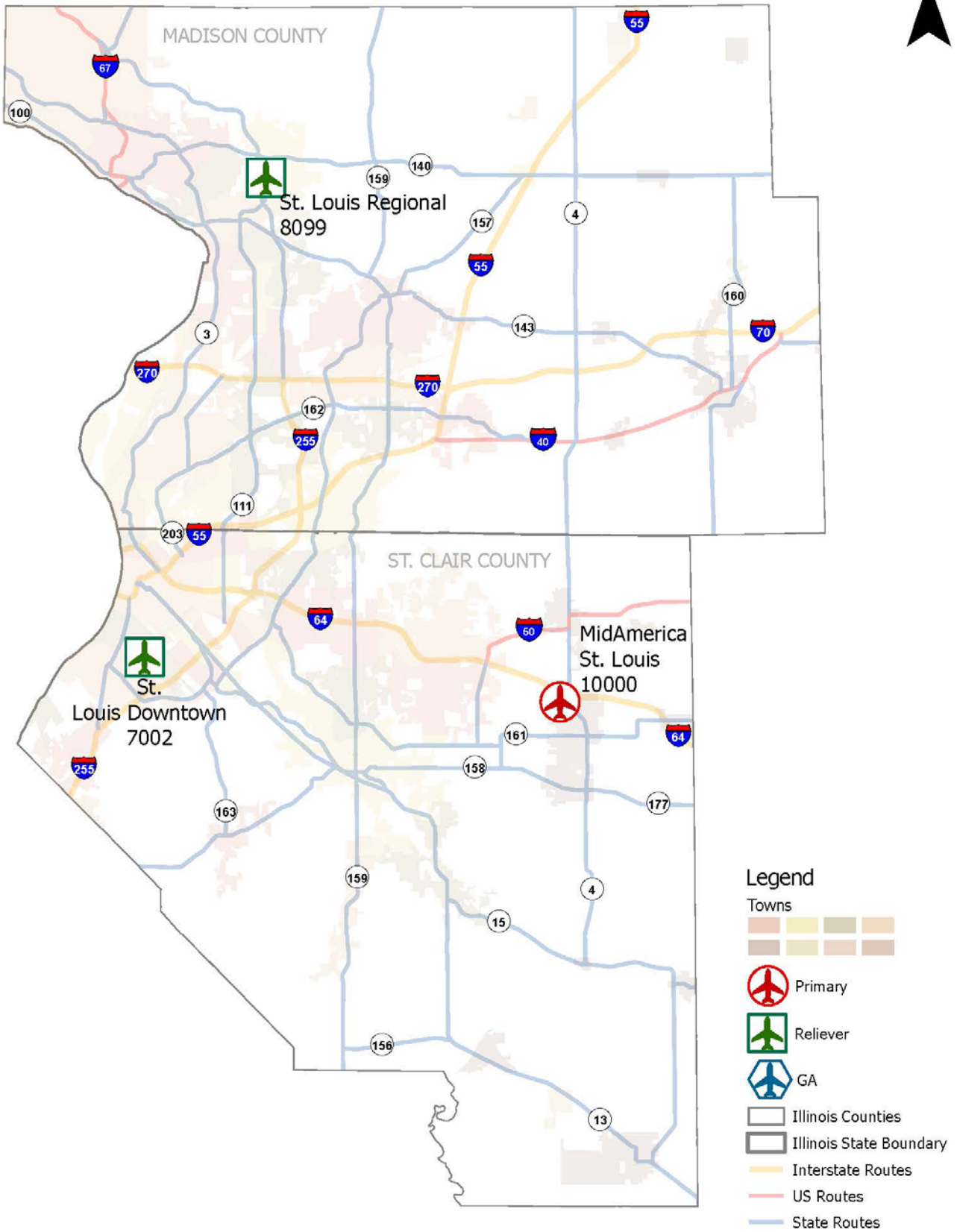
ILLINOIS AIRPORTS AND ASSOCIATED CITIES

- ❑ **Abraham Lincoln Capital** (Springfield)
- ❑ **Albertus** (Freeport)
- ❑ **Aurora Municipal** (Aurora)
- ❑ **Benton Municipal** (Benton)
- ❑ **Bolingbrook Clow International** (Bolingbrook)
- ❑ **Bult Field** (Monee)
- ❑ **Cairo Regional** (Cairo)
- ❑ **Carmi Municipal** (Carmi)
- ❑ **Casey Municipal** (Casey)
- ❑ **Central Illinois Regional** (Bloomington-Normal)
- ❑ **Centralia Municipal** (Centralia)
- ❑ **Chicago Executive** (Wheeling/Prospect Heights)
- ❑ **Chicago Midway International Airport** (Chicago)
- ❑ **Chicago Rockford International** (Rockford)
- ❑ **Coles County Memorial** (Mattoon/Charleston)
- ❑ **Crawford County** (Robinson)
- ❑ **Decatur** (Decatur)
- ❑ **DeKalb Taylor Municipal** (DeKalb)
- ❑ **Dixon Municipal** (Dixon)
- ❑ **DuPage** (West Chicago)
- ❑ **Edgar County** (Paris)
- ❑ **Effingham County Memorial** (Effingham)
- ❑ **Fairfield Municipal** (Fairfield)
- ❑ **Flora Municipal** (Flora)
- ❑ **Galesburg Municipal** (Galesburg)
- ❑ **General Wayne A. Downing Peoria International** (Peoria)
- ❑ **Greater Beardstown** (Beardstown)
- ❑ **Greater Kankakee** (Kankakee)
- ❑ **Greenville** (Greenville)
- ❑ **Harrisburg-Raleigh** (Harrisburg)
- ❑ **Havana Regional** (Havana)
- ❑ **Illinois Valley Regional** (Peru)
- ❑ **Ingersoll** (Canton)
- ❑ **Jacksonville Municipal** (Jacksonville)
- ❑ **Joliet Regional** (Joliet)
- ❑ **Kewanee Municipal** (Kewanee)
- ❑ **Lake in the Hills** (Lake in the Hills)
- ❑ **Lansing Municipal** (Lansing)
- ❑ **Lawrenceville-Vincennes International** (Lawrenceville/Vincennes)
- ❑ **Lewis University** (Romeoville)
- ❑ **Litchfield Municipal** (Litchfield)
- ❑ **Logan County** (Lincoln)
- ❑ **Macomb Municipal** (Macomb)
- ❑ **Marshall County** (Lacon)
- ❑ **Metropolis Municipal** (Metropolis)
- ❑ **MidAmerica St. Louis** (Belleville)
- ❑ **Monmouth Municipal** (Monmouth)
- ❑ **Morris Municipal** (Morris)
- ❑ **Mount Carmel Municipal** (Mount Carmel)
- ❑ **Mount Sterling Municipal** (Mount Sterling)
- ❑ **Mount Vernon** (Mount Vernon)
- ❑ **Mt. Hawley Auxiliary** (Peoria)
- ❑ **O'Hare International** (Chicago)
- ❑ **Olney-Noble** (Olney-Noble)
- ❑ **Pekin Municipal** (Pekin)
- ❑ **Pinckneyville-Du Quoin** (Pinckneyville/Du Quoin)
- ❑ **Pittsfield Penstone Municipal** (Pittsfield)
- ❑ **Pontiac Municipal** (Pontiac)
- ❑ **Quad City International** (Moline)
- ❑ **Quincy Regional** (Quincy)
- ❑ **Rantoul National Aviation Center** (Rantoul)
- ❑ **Rochelle Municipal** (Rochelle)
- ❑ **Salem-Leckrone** (Salem)
- ❑ **Schaumburg Regional** (Schaumburg)
- ❑ **Shelby County** (Shelbyville)
- ❑ **Southern Illinois** (Carbondale/Murphysboro)
- ❑ **Sparta Community** (Sparta)
- ❑ **St. Louis Downtown** (Cahokia)
- ❑ **St. Louis Regional** (Alton)
- ❑ **Taylorville Municipal** (Taylorville)
- ❑ **Tri-Township** (Savanna)
- ❑ **University of Illinois – Willard** (Champaign)
- ❑ **Vandalia Municipal** (Vandalia)
- ❑ **Vermilion Regional** (Danville)
- ❑ **Veterans Airport of Southern Illinois** (Marion)
- ❑ **Waukegan National** (Waukegan)
- ❑ **Whiteside County** (Sterling/Rock Falls)

Public Use Airports in Northeastern Illinois



Public Use Airports in Southwestern Illinois



AIRPORT ACTIVITY

This section contains a series of tables which displays enplanements, based aircraft, and aircraft operations. **Table 1** is a summary of the current activity for each airport, while **Tables 2, 3, and 4** illustrate these activities in more detail.

Based aircraft in **Table 3** consist of single engine, multi-engine, jet aircraft, helicopters, and military aircraft from IDOT survey of 5010s. Annual operations numbers are from FAA Air Traffic Control Tower counts or Airport 5010's. 2022 Operations are up 8% over 2021.

Table 2 is a historical account of air passenger enplanements (boardings) since CY 2008 (15 years). Specifically, these are revenue passengers boarding air carriers, commuters, charters, and air taxis at all Illinois Communities having scheduled service. This data came from the FAA Historical Enplanement Data. CY 22 is up 25.3% over CY 21 but still below pre-pandemic levels.

Current based general aviation aircraft is reported in **Table 3** by aircraft type. Total based aircraft in the state increased slightly from 3,612 in 2021 to 3,644 in 2022. This is the highest amount of based aircraft in Illinois since 2008. Aircraft type includes single and multi-engine prop, jet, rotorcraft, and military.

Cargo weight landed in pounds is shown in **Table 4** for ORD, RFD, & PIA. This information is from the FAA and is self-reported from the airports. Total Landed Weight dropped by 6.18% but was still the 3rd highest year on record and generally above pre-pandemic levels. ORD was 7th nationally and RFD was 13th nationally.

Table 5 shows the ownership structures of Illinois Publicly owned airports.

Table 6 shows the current airports with Air Traffic Control Towers.

Operation counts in **Table 1** comes from the FAA 5010 Data sheets. The Department is seeking to conduct an Aircraft Operations Study at selected non-towered airports at each airport once every three years if sufficient FAA Discretionary System Planning Funding can be obtained for this effort.

TABLE 1: ILLINOIS AIRPORT ACTIVITY SUMMARY

Airport	2022 Enplanements	Based Aircraft	Operations	Ownership Structure
Chicago O'Hare International	33,120,474	0	750,039	City/Village
Chicago Midway International Airport	9,650,281	30	185,956	City/Village
DuPage Airport	—	236	135,932	Airport Authority
Southern Illinois Airport	—	85	127,752	Airport Authority
Chicago Executive	—	259	108,203	City/Village
Lewis University	—	133	104,000	Port District
St. Louis Downtown	—	101	98,219	Bi-State
Aurora Municipal	—	196	76,885	City/Village
Lansing Municipal	—	51	59,400	City/Village

TABLE 1: ILLINOIS AIRPORT ACTIVITY SUMMARY (CONTINUED)

Airport	2022 Enplanements	Based Aircraft	Operations	Ownership Structure
University of Illinois – Willard	64,715	78	54,359	State of Illinois
Greater Kankakee	—	70	50,000	Airport Authority
Bolingbrook Clow International	—	54	50,000	City/Village
Chicago Rockford International	121,544	114	47,261	Airport Authority
Waukegan National	—	114	45,015	Port District
Schaumburg Regional	—	66	45,000	City/Village
Morris Municipal	—	62	42,300	City/Village
Lake in the Hills	—	117	42,000	City/Village
Dixon Municipal	—	20	40,000	City/Village
General Wayne A. Downing Peoria International	284,322	62	38,805	Airport Authority
Lawrenceville/Vincennes International	—	25	35,000	Bi-State
Sparta Community	—	32	34,000	Airport Authority
Whiteside County	—	42	32,720	County
St. Louis Regional	—	77	29,450	Airport Authority
Decatur Airport	9,871	44	29,285	Park District
Mt. Vernon Outland	—	38	28,580	Airport Authority
Quad City International	269,885	85	28,181	Airport Authority
Centralia Municipal	—	39	28,000	City/Village
Veterans Airport of Southern Illinois	10,399	24	27,751	Airport Authority
Abraham Lincoln Capital	72,466	91	27,378	Airport Authority
Coles County Memorial	—	51	27,050	Airport Authority
DeKalb Taylor Municipal	—	68	27,000	City/Village
Joliet Regional	—	66	25,000	Park District
Greenville Airport	—	39	25,000	Airport Authority

TABLE 1: ILLINOIS AIRPORT ACTIVITY SUMMARY (CONTINUED)

Airport	2022 Enplanements	Based Aircraft	Operations	Ownership Structure
Effingham County Memorial	—	19	25,000	County
Central Illinois Regional	175,665	74	23,199	Airport Authority
Illinois Valley Regional	—	51	21,000	City/Village
Mt. Hawley Auxiliary	—	48	21,000	Airport Authority
Albertus (Freeport)	—	38	20,000	City/Village
Rantoul National Aviation Center	—	17	20,000	City/Village
Quincy Regional	4,774	50	19,444	City/Village
Ingersoll (Canton)	—	22	19,000	Park District
Salem-Leckrone	—	10	19,000	Airport Authority
Marshall County	—	50	18,900	County
Vermilion Regional	—	51	18,150	Airport Authority
Harrisburg-Raleigh	—	15	18,000	Airport Authority
MidAmerica St. Louis	162,819	33	17,585	County
Shelby County	—	21	15,900	County
Litchfield Municipal	—	26	15,000	Airport Authority
Galesburg Municipal	—	27	14,000	City/Village
Carmi Municipal	—	20	13,500	City/Village
Bult Field	—	65	13,300	State of Illinois
Metropolis Municipal	—	14	13,000	City/Village
Rochelle Municipal	—	33	12,000	City/Village
Jacksonville Municipal	—	28	12,000	Airport Authority
Kewanee Municipal	—	24	12,000	Airport Authority
Crawford County	—	16	11,500	Airport Authority
Mt. Carmel Municipal	—	14	11,000	City/Village

TABLE 1: ILLINOIS AIRPORT ACTIVITY SUMMARY (CONTINUED)

Airport	2022 Enplanements	Based Aircraft	Operations	Ownership Structure
Pontiac Municipal	—	17	10,000	City/Village
Flora Municipal	—	13	10,000	City/Village
Pekin Municipal	—	45	9,000	City/Village
Macomb Municipal	—	23	9,000	Airport Authority
Taylorville Municipal	—	16	9,000	City/Village
Vandalia Municipal	—	13	9,000	Park District
Cairo Regional	—	12	9,000	Airport Authority
Fairfield Municipal	—	13	8,000	City/Village
Pinckneyville-Du Quoin	—	12	8,000	City/Village
Casey Municipal	—	11	8,000	City/Village
Benton Municipal	—	9	8,000	City/Village
Logan County	—	33	7,000	County
Pittsfield Penstone	—	10	7,000	City/Village
Edgar County	—	14	6,900	County
Olney-Noble	—	14	6,000	Airport Authority
Monmouth Municipal	—	13	5,000	City/Village
Tri-Township	—	9	4,000	Airport Authority
Greater Beardstown	—	9	3,000	City/Village
Mt. Sterling Municipal	—	10	3,000	City/Village
Havana Regional	—	13	1,400	Port Authority

TABLE 2: LAST 15 YEARS OF ENPLANEMENTS AT ILLINOIS PRIMARY AIRPORTS

TABLE 2A: CY 2022 – CY 2018

Airport	CY 2022	CY 2021	CY 2020	CY 2019	CY 2018
Chicago O'Hare International Airport	33,120,474	26,350,976	14,606,034	40,871,223	39,873,927
Chicago Midway International Airport	9,650,281	7,680,617	4,236,603	10,081,781	10,678,018
General Wayne A. Downing-Peoria International	284,322	237,442	159,777	341,064	328,769
Quad City International Airport	269,885	246,248	149,533	355,626	355,241
Central Illinois Regional Airport	175,665	159,897	89,759	209,156	178,057
MidAmerica St. Louis Airport	162,819	161,562	108,765	153,753	152,278
Chicago Rockford International Airport	121,544	102,779	79,674	116,767	106,710
Abraham Lincoln Capital Airport	72,466	60,949	34,486	75,407	76,950
University of Illinois – Willard	64,715	56,700	35,874	105,559	109,878
Veterans Airport of Southern Illinois	10,399	10,522	5,783	11,099	11,078
Decatur Airport	9,871	9,001	3,429	8,561	9,519
Quincy Regional Airport	4,774	7,418	4,929	10,033	11,633
Total	43,947,215	35,084,111	19,514,646	52,340,029	51,892,058

TABLE 2: LAST 15 YEARS OF ENPLANEMENTS AT ILLINOIS PRIMARY AIRPORTS (CONTINUED)

TABLE 2B: CY 2017 – CY 2013

Airport	CY 2017	CY 2016	CY 2015	CY 2014	CY 2013
Chicago O'Hare International Airport	38,593,028	37,589,899	36,305,668	33,843,426	32,317,835
Chicago Midway International Airport	10,912,074	11,044,387	10,830,850	10,311,996	9,915,646
Quad City International Airport	335,940	364,393	368,114	372,526	384,198
General Wayne A. Downing-Peoria International	312,378	307,189	318,162	320,054	291,147
Central Illinois Regional Airport	163,475	188,490	186,633	204,523	211,957
MidAmerica St. Louis Airport	123,841	79,988	32,589	16,328	13,542
Chicago Rockford International Airport	112,862	101,790	108,379	111,983	109,384
University of Illinois – Willard	100,133	89,318	89,836	95,351	84,853
Abraham Lincoln Capital Airport	92,048	93,269	90,413	86,198	70,651
Veterans Airport of Southern Illinois	11,029	10,044	10,570	11,096	11,241
Decatur Airport	8,324	8,453	8,034	6,746	6,827
Quincy Regional Airport	7,709	7,847	9,159	10,241	10,679
Total	50,772,841	49,885,067	48,358,407	45,390,468	43,427,960

TABLE 2: LAST 15 YEARS OF ENPLANEMENTS AT ILLINOIS PRIMARY AIRPORTS (CONTINUED)

TABLE 2C: CY 2012 – CY 2008

Airport	CY 2012	CY 2011	CY 2010	CY 2009	CY 2008
Chicago O'Hare International Airport	32,171,795	31,892,301	21,171,831	31,135,732	33,683,991
Chicago Midway International Airport	9,436,387	9,134,576	8,518,957	8,253,620	8,021,383
Quad City International Airport	396,460	412,470	477,086	461,888	476,532
General Wayne A. Downing-Peoria International	286,507	249,898	249,595	242,142	278,426
Central Illinois Regional Airport	240,181	284,852	274,677	243,448	262,846
Chicago Rockford International Airport	106,412	102,559	96,974	96,812	110,151
University of Illinois – Willard	86,408	83,731	85,715	88,068	98,225
Abraham Lincoln Capital Airport	65,756	71,862	61,413	58,197	56,771
Veterans Airport of Southern Illinois	11,411	10,558	8,047	3,399	3,631
Quincy Regional Airport	10,165	9,083	7,783	1,750	2,044
Decatur Airport	7,753	7,808	2,456	672	1,232
MidAmerica St. Louis Airport	2,314	706	1,183	1,964	27,002
Total	42,821,549	42,260,404	30,955,717	40,587,692	43,022,234

TABLE 3: BASED GENERAL AVIATION AIRCRAFT

Airport	2023	2022	2021	2020	2019	2018	2017	2016	2015	2014	2013	2012
Chicago Executive	259	216	182	210	217	230	186	192	175	184	193	207
DuPage Airport	236	255	238	241	258	261	204	210	223	237	246	252
Aurora Municipal	196	196	183	189	194	149	327	338	355	337	343	294
Lewis University	133	133	134	140	143	137	145	151	152	157	148	142
Lake in the Hills	117	106	99	103	102	103	110	101	97	92	98	97
Waukegan National	114	114	110	117	120	106	161	165	159	166	168	148
St. Louis Downtown	101	110	102	109	109	122	241	258	268	279	189	179
Southern Illinois	85	86	84	70	69	56	70	74	77	79	80	84
St. Louis Regional	77	81	76	37	37	46	97	104	108	112	110	104
Greater Kankakee	70	70	64	63	37	41	84	85	90	93	94	98
DeKalb Taylor Municipal	68	71	70	70	70	52	74	75	73	45	47	47
Schaumburg Regional	66	66	61	65	65	76	76	77	78	78	74	73
Joliet Regional	66	63	64	62	60	71	73	74	70	76	82	81
Bult Field	65	64	65	66	64	69	59	63	68	67	67	—
Morris Municipal	62	59	64	59	60	34	55	57	61	65	65	67
Bolingbrook Clow International	54	59	60	63	61	80	79	95	100	104	99	86
Vermilion Regional	51	53	51	52	59	68	67	64	54	58	58	59
Lansing Municipal	51	51	43	46	53	58	128	138	145	155	157	163
Coles County Memorial	51	50	50	53	55	58	79	83	80	82	78	74

TABLE 3: BASED GENERAL AVIATION AIRCRAFT (CONTINUED)

Airport	2023	2022	2021	2020	2019	2018	2017	2016	2015	2014	2013	2012
Illinois Valley Regional	51	38	47	36	38	42	39	39	41	39	37	35
Quincy Regional Airport	50	47	44	53	56	41	—	—	—	—	—	45
Marshall County	50	42	36	40	41	43	48	48	48	44	44	41
Mt. Hawley Auxiliary	48	51	50	48	52	34	58	60	62	61	61	62
Pekin Municipal	45	45	44	45	45	40	50	52	54	40	41	38
Decatur Airport	44	62	37	48	49	46	50	52	49	60	59	58
Whiteside County	42	41	37	41	41	41	47	48	43	42	37	34
Centralia Municipal	39	39	37	40	31	30	39	30	30	31	31	24
Greenville	39	37	33	36	37	42	42	42	42	35	33	25
Albertus (Freeport)	38	38	36	45	48	57	48	52	54	54	57	55
Mt. Vernon Outland	38	38	34	33	29	42	38	40	43	35	33	30
Rochelle Municipal	33	33	25	33	32	24	25	26	26	26	27	26
Logan County	33	13	11	13	13	28	28	28	30	31	31	33
Sparta Community	32	32	32	30	30	26	28	29	26	27	24	34
Jacksonville Municipal	28	27	27	31	30	29	33	30	35	35	34	36
Galesburg Municipal	27	27	22	26	27	30	36	37	38	45	28	28
Litchfield Municipal	26	33	28	32	33	37	38	37	37	37	34	35
Lawrenceville-Vincennes International	25	20	22	18	20	20	38	40	41	42	43	44
Kewanee Municipal	24	21	20	18	20	21	25	25	26	24	24	26

TABLE 3: BASED GENERAL AVIATION AIRCRAFT (CONTINUED)

Airport	2023	2022	2021	2020	2019	2018	2017	2016	2015	2014	2013	2012
Macomb Municipal	23	27	23	27	27	25	26	26	26	22	23	24
Ingersoll (Canton)	22	18	15	16	18	26	43	43	45	29	29	28
Shelby County	21	18	17	17	17	21	16	16	17	17	17	15
Carmi Municipal	20	20	18	21	23	13	13	13	14	14	19	16
Dixon Municipal	20	18	21	18	18	20	29	31	30	29	30	28
Effingham County Memorial	19	18	20	18	18	18	21	21	13	15	15	15
Pontiac Municipal	17	17	16	17	17	19	19	10	10	10	10	10
Rantoul National Aviation Center	17	14	15	14	14	12	10	11	8	9	11	11
Crawford County	16	17	15	16	16	15	15	16	16	15	13	6
Taylorville Municipal	16	14	17	14	14	19	16	16	17	22	19	16
Harrisburg-Raleigh	15	15	13	14	8	12	12	13	13	14	14	14
Olney-Noble	14	17	15	17	15	15	16	16	11	11	13	14
Mt. Carmel Municipal	14	14	14	17	17	19	19	14	14	14	15	14
Edgar County	14	14	13	13	14	12	12	12	16	16	16	28
Metropolis Municipal	14	14	11	13	14	14	14	14	15	16	16	17
Fairfield Municipal	13	14	14	14	14	13	13	13	14	13	8	8
Vandalia Municipal	13	13	15	9	10	13	20	22	7	8	8	9
Havana Regional	13	13	11	12	13	13	12	12	5	5	5	5
Flora Municipal	13	11	10	10	10	12	9	7	5	7	8	8

TABLE 3: BASED GENERAL AVIATION AIRCRAFT (CONTINUED)

Airport	2023	2022	2021	2020	2019	2018	2017	2016	2015	2014	2013	2012
Monmouth Municipal	13	9	9	7	9	9	8	10	10	9	10	4
Pinckneyville-Du Quoin	12	17	17	19	20	19	16	13	13	15	8	9
Cairo Regional	12	12	12	14	15	19	19	16	15	16	14	15
Casey Municipal	11	11	12	13	15	10	11	11	12	11	8	8
Pittsfield Penstone	10	10	10	9	9	11	9	9	9	8	9	9
Mt. Sterling Municipal	10	10	9	9	9	9	8	10	10	10	5	5
Salem-Leckrone	10	8	11	9	11	11	11	12	12	13	13	8
Greater Beardstown	9	10	9	9	10	3	3	1	2	2	2	2
Tri-Township	9	9	10	9	9	10	10	11	11	12	6	4
Benton Municipal	9	9	9	9	2	5	10	10	10	10	8	8
Total	3644	3612	2833	2885	2911	2907	3465	3548	3558	3568	3448	3371

TABLE 4: LAST 15 YEARS OF CARGO DATA AS REPORTED BY FAA (LANDED WEIGHT POUNDS)

Year	ORD	RFD	PIA	Total
CY 2022	7,840,745,746	3,424,546,813	99,653,600	11,364,946,159
CY 2021	8,590,863,840	3,410,070,576	112,314,360	12,113,248,776
CY 2020	7,877,649,208	2,739,584,350	129,393,520	10,746,627,078
CY 2019	6,543,510,230	2,372,104,750	127,604,860	9,043,219,840
CY 2018	6,697,030,276	2,139,318,460	112,312,580	8,948,661,316
CY 2017	10,373,559,593	1,381,654,780	122,923,314	11,878,137,687
CY 2016	9,358,755,022	922,955,400	138,141,580	10,419,852,002
CY 2015	9,063,649,529	796,201,190	147,981,860	10,007,832,579
CY 2014	7,541,411,779	788,773,800	206,958,840	8,537,144,419
CY 2013	6,864,249,348	792,674,210	200,321,300	7,857,244,858
CY 2012	4,555,097,891	822,206,730	195,210,820	5,572,515,441
CY 2011	4,368,420,500	888,721,860	149,632,080	5,406,774,440
CY 2010	4,895,940,100	917,260,300	183,258,309	5,996,458,709
CY 2009	3,499,701,350	1,128,804,190	229,890,380	4,858,395,920
CY 2008	4,206,916,900	1,419,957,532	180,487,650	5,807,362,082
CY 2007	4,401,472,100	1,474,574,465	206,699,320	6,082,745,885

TABLE 5: ILLINOIS PUBLIC AIRPORT SPONSORS

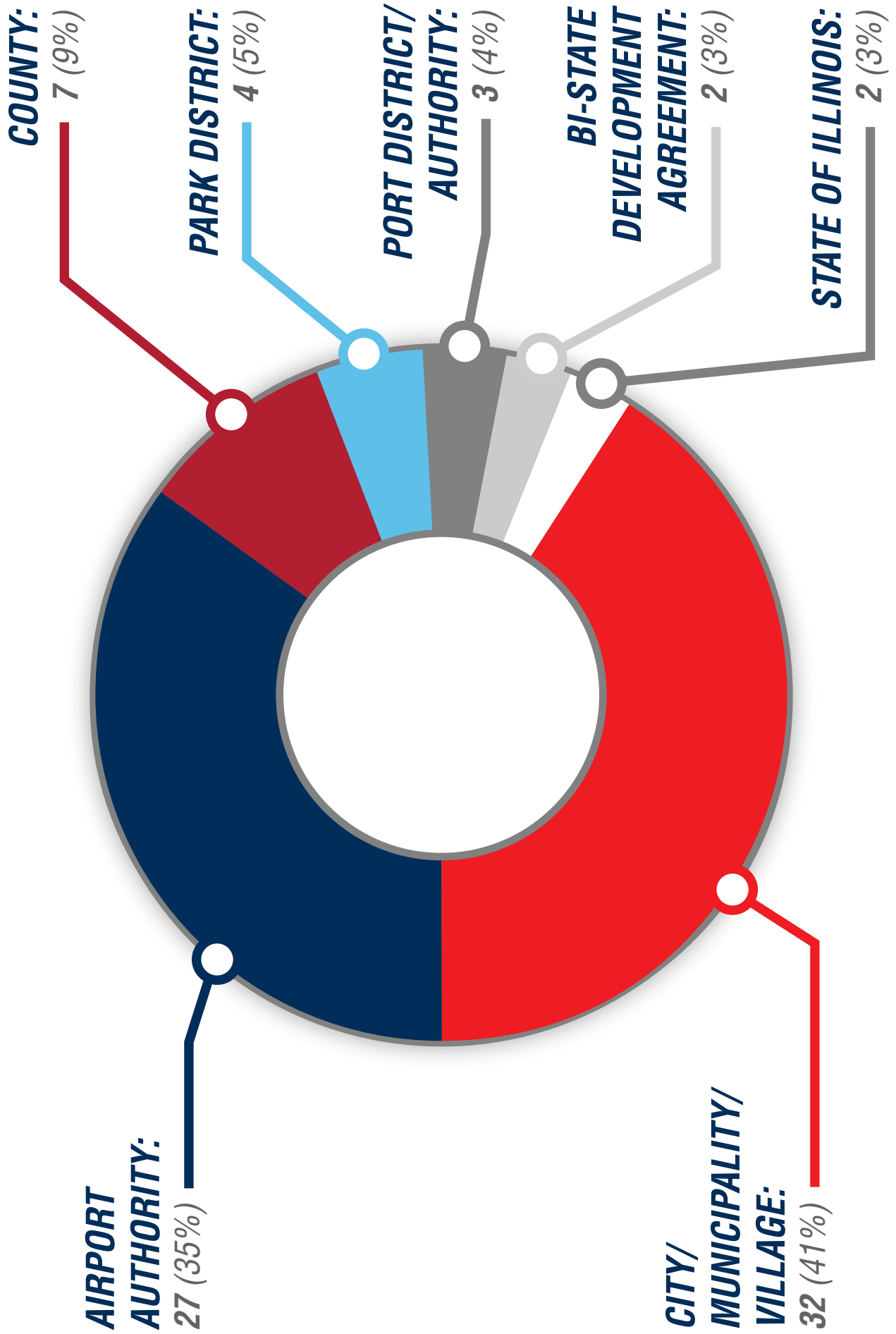


TABLE 6: ILLINOIS AIRPORTS WITH AN AIR TRAFFIC CONTROL TOWER

Airport	City	Identifier	Hours	Frequency
St. Louis Regional	East Alton	ALN	7:00 – 22:00	126.0
Aurora Municipal	Aurora	ARR	7:00 – 21:00	120.6
MidAmerica St. Louis	Belleville	BLV	24 Hours	128.25
Central Illinois Regional	Bloomington	BMI	6:00 – 22:00	124.6
St. Louis Downtown	Cahokia	CPS	6:30 – 22:00	119.925
Southern Illinois Airport	Carbondale	MDH	7:00 – 21:00	125.35
University of Illinois – Willard	Champaign	CMI	6:00 – 23:00	120.4
Chicago Midway International Airport	Chicago	MDW	24 Hours	135.2
Chicago O’Hare International	Chicago	ORD	24 Hours	—
Decatur Airport	Decatur	DEC	6:00 – 22:00	118.9
Veterans Airport of Southern Illinois	Marion	MWA	7:00 – 19:00	128.4
Quad City International	Moline	MLI	5:30 – 22:30	119.4
General Wayne A. Downing Peoria International	Peoria	PIA	24 Hours	124.0
Chicago Executive	Prospect Heights	PWK	7:00 – 22:00	119.9
Chicago Rockford International	Rockford	RFD	24 Hours	118.1
Lewis University	Romeoville	LOT	9:00 – 21:00	134.8
Abraham Lincoln Capital	Springfield	SPI	6:00 – 22:00	121.3
Waukegan National	Waukegan	UGN	6:00 – 22:00	120.05

ILLINOIS SCHEDULED AIR PASSENGER SERVICES

Illinois has 12 airports with Commercial Airline Passenger Service. These 12 Airports offer non-stop service to 48 States and Washington D.C. with the only States without current non-stop service being Delaware and Mississippi. There is also non-stop service to US Territories including:

- ❑ Puerto Rico
- ❑ St. Thomas

Illinois Airports also offer non-stop flights to 67 different International Destinations as of July 2023, including 5 Continents and Oceania (Auckland, New Zealand) with the exception of Australia and Antarctica. A total of 48 airlines serve Illinois Airports.

Table 7 shows the Domestic non-stop destinations offered at Illinois Airports as of July 2023.

Table 8 shows the International non-stop destinations offered at Illinois Airports as of July 2023.

Table 9 shows the different airlines offering service from Illinois Airports. This data was pulled directly from the Primary Airport Websites.



 Chicago Midway International Airport

TABLE 7: DOMESTIC NON-STOP DESTINATIONS - JULY 2023

Airport	Destinations/Identifier
Abraham Lincoln Capital Airport (SPI)	<ul style="list-style-type: none"> <input type="checkbox"/> Chicago O'Hare ORD <input type="checkbox"/> Dallas Ft. Worth DFW
Central Illinois Regional (BMI)	<ul style="list-style-type: none"> <input type="checkbox"/> Atlanta ATL <input type="checkbox"/> Chicago O'Hare ORD <input type="checkbox"/> Dallas Ft. Worth DFW <input type="checkbox"/> Denver DEN <input type="checkbox"/> Detroit DTW <input type="checkbox"/> Orlando International MCO <input type="checkbox"/> Orlando Sanford SFB <input type="checkbox"/> St. Pete Clearwater PIE <input type="checkbox"/> Tampa International TPA
Chicago Rockford International (RFD)	<ul style="list-style-type: none"> <input type="checkbox"/> Ft. Myers/Punta Gorda PGD <input type="checkbox"/> Las Vegas LAS <input type="checkbox"/> Orlando Sanford SFB <input type="checkbox"/> Phoenix/Mesa AZA <input type="checkbox"/> Sarasota/Bradenton SRQ <input type="checkbox"/> St. Pete Clearwater PIE
Quincy Regional Airport (UIN)	<ul style="list-style-type: none"> <input type="checkbox"/> Chicago O'Hare ORD <input type="checkbox"/> St. Louis Lambert STL
General Wayne A. Downing Peoria International (PIA)	<ul style="list-style-type: none"> <input type="checkbox"/> Charlotte CLT <input type="checkbox"/> Chicago O'Hare ORD <input type="checkbox"/> Dallas Ft. Worth DFW <input type="checkbox"/> Destin/Ft. Walton Beach VPS <input type="checkbox"/> Denver DEN <input type="checkbox"/> Fort Lauderdale FLL <input type="checkbox"/> Ft. Myers/Punta Gorda PGD <input type="checkbox"/> Las Vegas LAS <input type="checkbox"/> Nashville BNA <input type="checkbox"/> Orlando Sanford SFB <input type="checkbox"/> Phoenix/Mesa AZA <input type="checkbox"/> Sarasota/Bradenton SRQ <input type="checkbox"/> St. Pete Clearwater PIE
MidAmerica St. Louis (BLV)	<ul style="list-style-type: none"> <input type="checkbox"/> Charleston CHS <input type="checkbox"/> Destin/Ft. Walton Beach VPS <input type="checkbox"/> Fort Lauderdale FLL <input type="checkbox"/> Ft. Myers/Punta Gorda PGD <input type="checkbox"/> Jacksonville JAX <input type="checkbox"/> Las Vegas LAS <input type="checkbox"/> Myrtle Beach MYR <input type="checkbox"/> Orlando Sanford SFB <input type="checkbox"/> Sarasota/Bradenton SRQ <input type="checkbox"/> Savannah SAV <input type="checkbox"/> St. Pete Clearwater PIE

TABLE 7: DOMESTIC NON-STOP DESTINATIONS - JULY 2023 (CONTINUED)

Airport	Destinations/Identifier
Veterans Airport of Southern Illinois (MWA)	<input type="checkbox"/> Chicago O’Hare ORD
Quad City International (MLI)	<input type="checkbox"/> Atlanta ATL <input type="checkbox"/> Chicago O’Hare ORD <input type="checkbox"/> Dallas Ft. Worth DFW <input type="checkbox"/> Denver DEN <input type="checkbox"/> Ft. Myers/Punta Gorda PGD <input type="checkbox"/> Las Vegas LAS <input type="checkbox"/> Orlando Sanford SFB <input type="checkbox"/> Phoenix/Mesa AZA <input type="checkbox"/> St. Pete Clearwater PIE
University of Illinois – Willard (CMI)	<input type="checkbox"/> Chicago O’Hare ORD <input type="checkbox"/> Dallas Ft. Worth DFW
Decatur Airport (DEC)	<input type="checkbox"/> Chicago O’Hare ORD

TABLE 7A: CHICAGO MIDWAY INTERNATIONAL AIRPORT DOMESTIC DESTINATIONS

Destinations	Identifier
Albany	ALB
Albuquerque	ABQ
Asheville/Hendersonville	AVL
Atlanta	ATL
Austin	AUS
Baltimore	BWI
Birmingham	BHM
Boston	BOS
Buffalo	BUF
Burbank	BUR
Charleston	CHS
Charlotte Douglas	CLT
Cincinnati/Covington	CVG
Cleveland	CLE
Colorado Springs	COS
Columbus	CMH
Dallas Fort Worth	DFW
Dallas Love Field	DAL
Denver	DEN
Destin/Ft. Walton Beach	VPS
Detroit	DTW
Fort Lauderdale	FLL
Fort Myers	RSW
Fort Myers/Punta Gorda	PGD
Grand Rapids	GRR

Destinations	Identifier
Hartford	BDL
Houston Hobby	HOU
Houston Intercontinental	IAH
Jacksonville	JAX
Kansas City	MCI
Knoxville	TYS
Las Vegas	LAS
Long Beach	LGB
Los Angeles	LAX
Louisville	SDF
Manchester	MHT
Memphis	MEM
Miami	MIA
Minneapolis/St. Paul	MSP
Myrtle Beach	MYR
Nashville	BNA
New Haven	HVN
New Orleans	MSY
New York/La Guardia	LGA
Norfolk	ORF
Oakland	OAK
Oklahoma City	OKC
Omaha	OMA
Ontario	ONT
Orlando International	MCO

TABLE 7A: CHICAGO MIDWAY INTERNATIONAL AIRPORT DOMESTIC DESTINATIONS (CONTINUED)

Destinations	Identifier
Panama City	ECP
Pensacola	PNS
Philadelphia	PHL
Phoenix	PHX
Pittsburgh	PIT
Portland	PDX
Portland	PWM
Providence	PVD
Provo	PVU
Raleigh-Durham	RDU
Richmond	RIC
Rochester	ROC
Sacramento	SMF
Salt Lake City	SLC
San Antonio	SAT

Destinations	Identifier
San Diego	SAN
San Francisco	SFO
San Jose	SJC
San Juan	SJU
Sarasota/Bradenton	SRQ
Savannah	SAV
Seattle	SEA
St. Louis Lambert	STL
Tampa	TPA
Tucson	TUS
Tulsa	TUL
Washington National	DCA
Washington Dulles	IAD
West Palm Beach	PBI

TABLE 7B: CHICAGO O'HARE INTERNATIONAL DOMESTIC DESTINATIONS – JULY 2023

Destinations	Identifier
Akron	CAK
Albany	ALB
Albuquerque	ABQ
Allentown	ABE
Anchorage	ANC
Appleton	ATW
Asheville/Hendersonville	AVL
Aspen	ASE
Atlanta Hartsfield	ATL
Austin	AUS
Baltimore	BWI
Bangor	BGR
Billings	BIL
Birmingham	BHM
Bloomington	BMI
Boise	BOI
Boston	BOS
Bozeman	BZN
Buffalo	BUF
Burlington	BRL
Burlington	BTV
Cedar Rapids	CID
Champaign	CMI
Charleston	CHS
Charleston	CRW

Destinations	Identifier
Charlotte Douglas	CLT
Chattanooga	CHA
Cincinnati	CVG
Cleveland	CLE
Colorado Springs	COS
Columbia	COU
Columbia	CAE
Columbus	CMH
Dallas Fort Worth	DFW
Dallas Love Field	DAL
Dayton	DAY
Decatur	DEC
Denver	DEN
Des Moines	DSM
Destin/Ft. Walton	VPS
Detroit	DTW
Duluth	DLH
El Paso	ELP
Fairbanks	FAI
Fargo	FAR
Fayetteville	XNA
Flint	FNT
Fort Dodge	FOD
Fort Lauderdale	FLL
Fort Myers	RSW

TABLE 7B: CHICAGO O'HARE INTERNATIONAL DOMESTIC DESTINATIONS – JULY 2023 (CONTINUED)

Destinations	Identifier
Fort Wayne	FWA
Fresno	FAT
Grand Rapids	GRR
Great Falls	GTF
Green Bay	GRB
Greensboro	GSO
Greenville Spartansburg	GSP
Hailey Sun Valley	SUN
Hancock	CMX
Harrisburg	MDT
Hartford	BDL
Hays	HYS
Hilton Head Island	HHH
Honolulu	HNL
Houston Intercontinental	IAH
Huntsville	HSV
Indianapolis	IND
Ironwood	IWD
Jackson Hole	JAC
Jacksonville	JAX
Johnstown	JST
Kahului	OGG
Kalamazoo	AZO
Kalispell Glacier	FCA
Kansas City	MCI

Destinations	Identifier
Knoxville	TYS
Kona	KOA
La Crosse	LSE
Lansing	LAN
Las Vegas	LAS
Lexington	LEX
Lincoln	LNK
Little Rock	LIT
Los Angeles	LAX
Louisville	SDF
Madison	MSN
Manchester	MHT
Manistee	MBL
Marquette	MQT
Martha's Vineyard	MVY
Mason City	MCW
Memphis	MEM
Miami	MIA
Milwaukee	MKE
Minneapolis/St. Paul	MSP
Missoula	MSO
Moline	MLI
Montrose	MTJ
Muskegon	MKG
Myrtle Beach	MYR

TABLE 7B: CHICAGO O'HARE INTERNATIONAL DOMESTIC DESTINATIONS – JULY 2023 (CONTINUED)

Destinations	Identifier
Nantucket	ACK
Nashville	BNA
New Orleans	MSY
New York – JFK	JFK
New York – La Guardia	LGA
Newark	EWR
Norfolk	ORF
Oklahoma City	OKC
Omaha	OMA
Orange County	SNA
Orlando International	MCO
Panama City	ECP
Pensecola	PNS
Peoria	PIA
Philadelphia	PHL
Phoenix	PHX
Pittsburgh	PIT
Portland	PWM
Portland	PDX
Providence	PVD
Quincy	UIN
Raleigh/Durham	RDU
Rapid City	RAP
Reno	RNO
Richmond	RIC

Destinations	Identifier
Roanoke	ROA
Rochester	RST
Rochester	ROC
Sacramento	SMF
Saginaw	MBS
Salt Lake City	SLC
San Antonio	SAT
San Diego	SAN
San Francisco	SFO
Sarasota/Bradenton	SRQ
Savannah	SAV
Seattle	SEA
Sioux City	SUX
Sioux Falls	FSD
South Bend	SBN
Spokane	GEO
Springfield	SPI
Springfield	SGF
St. Louis Lambert	STL
St. Thomas Island	STT
State College	SCE
Syracuse	SYR
Tampa	TPA
Traverse City	TVC
Tucson	TUS

TABLE 7B: CHICAGO O'HARE INTERNATIONAL DOMESTIC DESTINATIONS – JULY 2023 (CONTINUED)

Destinations	Identifier
Tulsa	TUL
Washington Dulles	IAD
Washington National	DCA
Waterloo	ALO
Watertown	ATY

Destinations	Identifier
Wausau	CWA
White Plains	HPN
Wichita	ICT
Wilkes Barre	AVP
Wilmington	ILM

TABLE 8: INTERNATIONAL NON-STOP DESTINATIONS

TABLE 8A: CHICAGO MIDWAY INTERNATIONAL AIRPORT

Destinations	Identifier	Country
Aguascalientes	AGU	Mexico
Cancun	CUN	Mexico
Durango	DGO	Mexico
Guadalajara	GDL	Mexico
Montego Bay	MBJ	Jamaica

Destinations	Identifier	Country
Morelia	MLM	Mexico
Punta Cana	PUJ	Dominican Republic
Toronto	YYZ	Canada
Zacatecas	ZCL	Mexico
Leon/Guanajuato	BJX	Mexico

TABLE 8B: CHICAGO O'HARE INTERNATIONAL

Destinations	Identifier	Country
Abu Dhabi	AUH	U.A.E.
Addis Ababa	ADD	Ethiopia
Amman	AMM	Jordan
Amsterdam	AMS	Netherlands
Aruba	AUA	Aruba
Athens	ATH	Greece

Destinations	Identifier	Country
Auckland	AKL	New Zealand
Barcelona	BCN	Spain
Belgrade	BEG	Serbia
Brussels	BRU	Belgium
Calgary	YYC	Canada
Cancun	CUN	Mexico

TABLE 8B: CHICAGO O'HARE INTERNATIONAL (CONTINUED)

Destinations	Identifier	Country
Copenhagen	CPH	Denmark
Delhi	DEL	India
Doha	DOH	Qatar
Dubai	DXB	U.A.E.
Dublin	DUB	Ireland
Edinburgh	EDI	Scotland
Frankfurt	FRA	Germany
Grand Cayman	GCM	Cayman Isles
Guadalajara	GDL	Mexico
Guatemala City	GUA	Guatemala
Helinski	HEL	Finland
Istanbul	IST	Turkey
Krakow	KRK	Poland
Leon//Guanajuato	BJX	Mexico
Liberia	LIR	Costa Rica
Lisbon	LIS	Portugal
London	LHR	England
Los Cabos	SJD	Mexico
Madrid	MAD	Spain
Mexico City	MEX	Mexico
Milan	MLP	Italy
Montego Bay	MBJ	Jamaica
Monterrey	MTY	Mexico

Destinations	Identifier	Country
Montreal/PET	YUL	Canada
Morelia	MLM	Mexico
Munich	MUC	Germany
Nassau	NAS	Bahamas
Ottawa	YOW	Canada
Panama City	PTY	Panama
Paris De Gaulle	CDG	France
Providenciales	PLS	Turks and Caicos
Puerto Vallarta	PVR	Mexico
Punta Cana	PUJ	Dominican Republic
Quebec City	YQB	Canada
Queretaro	QRO	Mexico
Reykjavik	KEF	Iceland
Rome Da Vinci	FCO	FCO
San Jose	SJO	Costa Rica
Sao Paulo Guarulhos	GRU	Brazil
Seoul	ICN	South Korea
Shannon	SNN	Ireland
Stockholm	ARN	Sweden
Taipei	TPE	Taiwan
Tel Aviv Yafo	TLV	Isreal
Tokyo Haneda	HND	Japan

TABLE 8B: CHICAGO O'HARE INTERNATIONAL (CONTINUED)

Destinations	Identifier	Country
Tokyo Narita	NRT	Japan
Toronto	YYZ	Canada
Vancouver	YVR	Canada

Destinations	Identifier	Country
Vienna	VIE	Austria
Warsaw	WAW	Poland
Zurich	ZRH	Switzerland

TABLE 9: AIRLINES SERVING ILLINOIS AIRPORTS – JULY 2023

MidAmerica St. Louis

- Allegiant Air

Central Illinois Regional Airport

- Allegiant Air
- American Airlines
- Delta Airlines
- Frontier Airlines

University of Illinois – Willard

- American Airlines

Chicago Midway International Airport

- Allegiant Air
- Avelo Airlines
- Delta Airlines
- Frontier Airlines
- Porter Airlines
- Southwest Airlines
- Volaris Airlines

Decatur Airport

- United Airlines

Veterans Airport of Southern Illinois

- Contour

Quad City International Airport

- Allegiant Air
- American Airlines
- Delta Airlines
- United Airlines

General Wayne A. Downing Peoria International

- Allegiant Air
- American Airlines
- United Airlines

Quincy Regional Airport

- Southern Airways Express

Chicago Rockford International

- Allegiant Air

Abraham Lincoln Capital Airport

- Allegiant Air
- American Airlines

Chicago O'Hare International

- Aeromexico
- Air Canada
- Air France
- Air India
- Air Lingus
- Air New Zealand
- Air Serbia
- Alaska Airlines
- All Nippon Airways
- American Airlines
- Austrian
- British Airways
- Cape Air
- Cathay Pacific Airways
- Contour
- COPA
- Delta Airlines
- Denver Air Connection
- Eithad Airways
- Emirates
- Ethiopian Airlines Group
- EVA Air
- Finnair
- Frontier Airlines
- Iberia
- Icelandair
- Japan Airlines
- JetBlue Airways
- KLM Royal Dutch Airlines
- Korean Airlines
- LOT Polish Airlines
- Lufthansa
- Qatar Airlines

TABLE 9: AIRLINES SERVING ILLINOIS AIRPORTS – JULY 2023 (CONTINUED)

- Royal Jordanian Airlines
- Scandinavian Airlines System
- Southern Airways Express
- Southwest Airlines
- Spirit Airlines
- Sun Country
- Swiss International Airlines
- TAP Air Portugal
- Turkish Airlines
- United Airlines
- VivaAerobus
- Volaris
- West Jet



PHYSICAL CHARACTERISTICS

Table 10 summarizes the runway characteristics at the 77 publicly owned airports in Illinois. A description of each item is as follows.

- ❑ **Airport Name** – Official name of the airport
- ❑ **Runway** – This is the runway headings
- ❑ **Total Paved Length/Total Turf Length** – This is total runway length. Runways having grooved or friction treated surfaces are shown with either a “G” or “F”
- ❑ **Runway Width** – This is the physical width of the runway
- ❑ **Runway Lights** – Categorized by the degree of light intensity. Generally High Intensity Runway Lights (HIRL) are required on runways having an Instrument Landing System (ILS), Medium Intensity Runway Lights (MIRL) are required on runways having an instrument procedure which is less than a full ILS, and Low Intensity Runway Lights (LIRL) are to be used on runways having no planned approach. Centerline lights are indicated by a “CL” following the runway lighting type.
- ❑ **Electronic and Visual Landing Aids** – All electronic and visual aids to landing are included here separately for each approach end. If an approach end has a full ILS, then the individual components are not listed, except that the specific type of Approach Light System (ALS) is shown in parenthesis. If an approach end does not have a full ILS, then any ILS components present are listed. In addition, any aids not normally associated with an ILS are identified. These include DME, NDB, REIL, VASI and VOR. If no aids are present, the approach end is shown as Visual Flight Rules (VFR).
- ❑ **ILS** – Provides an approach path for exact alignment and descent of an aircraft on final approach to a runway. Categories are I, II, and III with category III being the more precise. All ILS systems identified in this report are Category I unless otherwise noted. An ILS consists of the following electronic components and visual aids:
 - **LOC/Localizer** – The component of the ILS which provides horizontal guidance to the runway. When used on the reverse side for the opposite runway end it is known as a Localizer Back Course (LOC-BC)
 - **GS/Glide Slope** – Electronic components which provide vertical guidance to the runway
 - **OM/Outer Marker** – A marker beacon at or near the glide slope intercept altitude of an ILS approach
 - **MM/Middle Marker** – A marker beacon that defines a point along the glide slope of an ILS normally located at or near the point of decision height
 - **ALS/Approach Light System** – An airport lighting facility which provides visual guidance to landing aircraft by radiating light beams in a directional pattern by which the pilot aligns the aircraft with the extended centerline of the runway on the final approach for landing.
 - **Types of ALS are:**
 - **ALSF-I** – High Intensity Approach Light System with Sequenced Flashing Lights, CAT-I configuration
 - **ALSF-II** – High Intensity Approach Light System with Sequenced Flashing Lights, CAT-II configuration
 - **SSALF** – Simplified Short Approach Light System
 - **SSALR** – Simplified Short Approach Light System with Runway Alignment Indicator Lights
 - **MALSF** – Medium Intensity Approach Light System with Sequenced Flashing Lights
 - **MALSR** – Medium Intensity Approach Light System with Runway Alignment Indicator Lights
 - **LDIN** – Lead-In Lighting System
 - **ODALS** – Omnidirectional Approach Lighting System
 - **RAIL** – Runway Alignment Indicator Lights
- ❑ **DME/Distance Measuring Equipment** – Equipment (airborne and ground) used to measure, in nautical miles, the slant range distance of an aircraft from the DME Navigation Aid
- ❑ **NDB/Nondirectional Beacon** – An L/MF or UHF radio beacon transmitting non-directional signals whereby the pilot of an aircraft equipped with direction finding equipment can determine their bearings to or from the radio beacon and “home” on or track to or from the station. When the radio beacon is installed in conjunction with the ILS marker, it is normally called a Compass Locator
- ❑ **PAPI/Precision Approach Path Indicator**
- ❑ **PLASI/Pulse Light Approach Slope Indicator**
- ❑ **VADI/Visual Approach Descent Indicator** – Types of light units which provides pilots with precise visual glide slope guidance during an approach for landing

- ❑ **REIL/Runway End Identifier Lights** – Two synchronized flashing lights, one on each side of the runway threshold, which provides rapid and positive identification of the approach end of a particular runway
- ❑ **VASI/Visual Approach Slope Indicator** – An airport lighting facility providing vertical visual approach slope guidance to aircraft during approach to landing by radiating a directional pattern of high intensity red and white focused light beams
- ❑ **VOR/Very High Frequency Omnidirectional Range Station** – A ground based electronic navigation air transmitting very high frequency navigation signals, 360 degrees in azimuth, oriented from magnetic north. Used as the basis for navigation in the national airspace system

ACRONYMS FOR RUNWAY CHARACTERISTICS CHART

- ❑ **P** – Paved Runway
- ❑ **T** – Turf Runway
- ❑ **G** – Grooved Runway
- ❑ **PFC** – Porous Friction Course Runway
- ❑ **LIRL** – Low Intensity Runway Lights
- ❑ **MIRL** – Medium Intensity Runway Lights
- ❑ **HIRL** – High Intensity Runway Lights
- ❑ **PIR** – Precision Instrument Runway
- ❑ **NPI** – Non-Precision Instrument
- ❑ **REILS** – Runway End Identifier Lights
- ❑ **PAPI** – Precision Approach Path Indicators
- ❑ **VASI** – Visual Approach Slope Indicator
- ❑ **MALSR** – Medium Intensity Approach Light System w/ Runway Alignment Indicators
- ❑ **ALSF2** – High Intensity Approach Light System w/ Sequenced Flashing Lights
- ❑ **RLLS** – Runway Lead in Light System
- ❑ **ODALS** – Omnidirectional Approach Lighting System
- ❑ **VFR** – Visual Flight Rules

All data in the Runway Characteristics Charts come from the FAA 5010 Data Sheets.




 University of Illinois – Willard Airport

TABLE 10: ILLINOIS PUBLIC USE AIRPORTS RUNWAY CHARACTERISTICS

Airport	Runway	Size	Runway Lights	Runway End	Runway End	
St. Louis Regional	11/29	8099' X 150'	HIRL	G	11- PIR REIL, PAPI	29- PIR MALSR
	17/35	6500' X 100'	MIRL		17- NPI PAPI	35- NPI PAPI
Aurora Municipal	9/27	6501' X 100'	HIRL	G	9- PIR PAPI MALSR	27- PIR PAPI REIL
	15/33	5503' X 100'	HIRL	G	15- PIR PAPI REIL	33- PIR PAPI MALSR
Beardstown (Greater Beardstown)	18/36	3198' X 75'	MIRL		18- PAPI REIL	36- NPI VASI REIL
	18/36	4000' X 60'	LIRL		18- VFR	18- VFR
MidAmerica St. Louis	14L/32R	10,000' X 150'	HIRL	G	14L- PIR PAPI REIL	32R- PIR PAPI MALSR
	14R/32L	8,006' X 150'	HIRL	G	14R- PIR PAPI MALSR	32L- PIR PAPI MALSR
Benton Municipal	18/36	4,002' X 75'	MIRL		18- NPI PAPI REIL	36- NPI REIL
Central Illinois Regional	2/20	8,000' X 150'	HIRL	G	2- PIR PAPI MALSR	20- PIR ALSF2
	11/29	6,525' X 150'	HIRL	G	11- PIR VASI	29- PIR MALSR
Bolingbrook Clow International	18/36	3,360' X 75'	MIRL		18- NPI	36- NPI
St. Louis Downtown	12R/30L	7,002' X 150'	HIRL	G	12R- PIR PAPI REIL	30L- PIR PAPI MALSR
	12L/30R	5,301' X 75'	MIRL		12L- NPI REIL	30R- NPI REIL
	5/23	2,799' X 75'	MIRL		5- VFR	23- VFR

TABLE 10: ILLINOIS PUBLIC USE AIRPORTS RUNWAY CHARACTERISTICS (CONTINUED)

Airport	Runway	Size	Runway Lights	Runway End	Runway End
Carmi Municipal	18/36	4,000' X 75'	MIRL	18- NPI PAPI	36- NPI PAPI REIL
	18/36	3,899' X 75'	MIRL	18- NPI	36- NPI REIL
	9/27	3,294' X 60'	MIRL	9- VFR	27- VFR
Southern Illinois Airport	18L/36R	6,506' X 100'	HIRL	18L- PIR MALSR	36R- NPI PAPI REIL
	6/24	4,163' X 100'	MIRL	6- VASI REIL	24- PAPI REIL
	18R/36L	3,498' X 60'	MIRL	18R- VASI	36L- VASI
Cairo Regional	14/32	4,001' X 100'	MIRL	14- NPI PAPI REIL	32- NPI
	2/20	3,200' X 60'	MIRL	2- VFR	20- VFR
	4/22	4,001' X 75'	MIRL	4- NPI	22- NPI
Casey Municipal	18/36	1,943' X 75'		18- VFR	36- VFR
	18/36	5,001' X 75'	MIRL	18- NPI PAPI REIL	36- NPI PAPI REIL
	9/27	3,300' X 60'	MIRL	9- VFR	27- VFR
University of Illinois – Willard	14L/32R	8,101' X 150'	HIRL	14L- PIR PAPI	32R- PIR PAPI MALSR
	4/22	6,502' X 150'	MIRL	4- NPI	22- NPI
	14R/32L	3,816' X 75'	MIRL	14R- PAPI	32L- PAPI

TABLE 10: ILLINOIS PUBLIC USE AIRPORTS RUNWAY CHARACTERISTICS (CONTINUED)

Airport	Runway	Size	Runway Lights	Runway End	Runway End	
Vermilion Regional	3/21	6,006' X 100'	HIRL	PFC	21- PIR PAPI MALSR	
	16/34	3,999' X 100'	MIRL	G	16- VASI REIL	
	12/30	2,500' X 150'			12- VFR	
DeKalb Taylor Municipal	2/20	7,026' X 100'	MIRL	G	2- PIR PAPI MALSR	
	9/27	4,201' X 75'	MIRL	G	9- NPI PAPI REIL	
Chicago O'Hare International	10L/28R	13,000' X 150'	HIRL	G	10L- PIR PAPI ALSF2	
	9R/27L	11,260' X 150'	HIRL	G	9R- PIR	
	9C/27C	11,245' X 200'	HIRL	G	9C- PIR PAPI ALSF2	
	10C/28C	10,800' X 200'	HIRL	G	10C- PIR PAPI ALSF2	
	4R/22L	8,075' X 150'	HIRL	G	4R- PIR PAPI MALSR	
	4L/22R	7,500' X 150'	HIRL	G	4L- PIR	
	9L/27R	7,500' X 150'	HIRL	G	9L- PIR ALSF2	
	10R/28L	7,500' X 150'	HIRL	G	10R- PIR ALSF2	
						27- NPI VASI REIL
						28R- PIR PAPI ALSF2
					27L- PIR	
					27C- PIR PAPI ALSF2	
					28C- PIR PAPI ALSF2	
					22L- PIR PAPI MALSR	
					22R- PIR PAPI MALSR	
					27R- PIR ALSF2	
					28L- PIR ALSF2	

TABLE 10: ILLINOIS PUBLIC USE AIRPORTS RUNWAY CHARACTERISTICS (CONTINUED)

Airport	Runway	Size	Runway Lights	Runway End	Runway End	
Chicago Midway International Airport	13C/31C	6,522' X 150'	HIRL	G	13C- PIR PAPI RLLS	31C- PIR PAPI REIL RLLS
	4R/22L	6,445' X 150'	HIRL	G	4R- PIR PAPI REIL	22L- PIR PAPI REIL
	4L/22R	5,507' X 150'	MIRL	G	4L- NPI PAPI	22R- NPI PAPI
	13L/31R	5,141' X 150'	MIRL	G	13L- NPI	31R- NPI PAPI
	13R/31L	3,859' X 60'	MIRL		13R- VFR	31L- VFR
Decatur Airport	6/24	8,496' X 150'	HIRL	G	6- PIR MALSR	24- PIR VASI
	12/30	6,799' X 150'	MIRL	G	12- NPI	30- NPI PAPI
	18/36	5,298' X 150'	MIRL	G	18- NPI PAPI	36- NPI VASI
Dixon Municipal	8/26	3,897' X 75'	MIRL		8- NPI REIL	26- NPI PAPI
	12/30	2,803' X 75'	MIRL		12- VFR	30- VFR
Effingham County Memorial	11/29	5,103' X 100'	MIRL		11- NPI REIL	29- NPI REIL
	1/19	3,400' X 60'	MIRL		1- NPI VASI	19- VASI
Fairfield Municipal	9/27	4,000' X 75'	MIRL		9- NPI VASI REIL	27- NPI VASI
	18/36	1,999' X 60'	MIRL		18- VFR	36- VFR
Flora Municipal	3/21	5,003' X 75'	MIRL		3- NPI VASI	21- NPI VASI REIL
	15/33	2,715' X 100'	None		15- VFR	33- VFR

TABLE 10: ILLINOIS PUBLIC USE AIRPORTS RUNWAY CHARACTERISTICS (CONTINUED)

Airport	Runway	Size	Runway Lights	Runway End	Runway End
Albertus Freeport	6/24	5,504' X 100'	MIRL	G	24- PIR PAPI MALSR
	18/36	2,404' X 150'	None		36- VFR
	13/31	2,285' X 150'	None		31- VFR
Galesburg Municipal	3/21	5,792' X 150'	HIRL	PFC	21-NPI VASI REIL
	10/28	3,600' X 100'	MIRL		28- VFR
Greenville	18/36	4,002' X 75'	MIRL		36- NPI REIL
	9/27	2,822' X 250'	None		27- VFR
	6/24	5,013' X 75'	MIRL		24- NPI PAPI REIL
Harrisburg-Raleigh	14/32	2,764' X 75'	MIRL		32- VFR
	9/27	2,235' X 100'	MIRL		27- VFR
Havana Regional	13/31	5,000' X 75'	MIRL		31- NPI REIL
	4/22	4,001' X 75'	MIRL		22- REIL
Jacksonville Municipal	13/31	2,821' X 100'	MIRL		31- NPI
	4/22	2,552' X 150'	None		22- VFR
Joliet Regional	4/22	5,981' X 100'	HIRL	PFC	22- NPI PAPI REIL
	16/34	4,398' X 75'	MIRL		34- NPI PAPI

TABLE 10: ILLINOIS PUBLIC USE AIRPORTS RUNWAY CHARACTERISTICS (CONTINUED)

Airport	Runway	Size	Runway Lights	Runway End	Runway End
Kewanee Municipal	9/27	4,500' X 75'	MIRL	9- NPI VASI	27- NPI VASI
	1/19	3,200' X 60'	MIRL	1- NPI	19- NPI
Lake in the Hills	8/26	3,801' X 50'	LIRL	8- NPI PAPI	26- NPI PAPI
	13/31	4,003' X 75'	MIRL	13- NPI REIL	31- NPI PAPI
Marshall County	18/36	2,199' X 50'	LIRL	18- VFR	36- VFR
	18/36	4,002' X 75'	MIRL	18- NPI PAPI REIL	36- NPI PAPI REIL
Lansing Municipal	9/27	3,395' X 75'	MIRL	9- NPI PAPI REIL	27- NPI PAPI REIL
	18/36	5,199' X 100'	MIRL	18-NPI VASI REIL	36- NPI PAPI REIL
Lawrenceville-Vincennes International	9/27	5,198' X 100'	MIRL	9- NPI VASI REIL	27- NPI PAPI REIL
	3/21	4,000' X 75'	MIRL	3- NPI PAPI REIL	21- NPI PAPI
Logan County	14/32	3,021' X 135'	None	14- VFR	32- VFR
	18/36	4,002' X 75'	MIRL	18- NPI PAPI REIL	36- NPI PAPI REIL
Litchfield Municipal	9/27	3,900' X 75'	MIRL	9- NPI PAPI REIL	27- NPI PAPI REIL
	9/27	5,100' X 100'	HIRL	9- NPI VASI REIL	27- NPI VASI REIL
Macomb Municipal	18/36	3,719' X 190'	None	18- VFR	36- VFR
	18/36	4,002' X 75'	MIRL	18- VFR	36- VFR

TABLE 10: ILLINOIS PUBLIC USE AIRPORTS RUNWAY CHARACTERISTICS (CONTINUED)

Airport	Runway	Size	Runway Lights	Runway End	Runway End
Veterans Airport of Southern Illinois	2/20	8,012' X 150'	HIRL	PFC	20- PIR MALSR
	11/29	4,997' X 100'	MIRL	G	29- PAPI REIL
Coles County Memorial	11/29	6,501' X 150'	HIRL	G	29- PIR MALSR
	6/24	5,799' X 100'	MIRL	G	24- NPI VASI REIL
	18/36	1,098' X 250'	None		36- VFR
Quad City International	9/27	10,002' X 150'	HIRL	G	27- PIR PAPI MALSR
	13/31	7,301' X 150'	HIRL	PFC	31- NPI PAPI REIL
	5/23	3,514' X 150'	MIRL	G	23- PAPI
Monmouth Municipal	3/21	2,899' X 60'	MIRL		21- PAPI
Morris Municipal	18/36	5,501' X 75'	MIRL		36- NPI REIL
Mt. Carmel Municipal	13/31	4,500' X 75'	MIRL		31- NPI VASI REIL
	4/22	4,000' X 100'	MIRL		22- NPI VASI REIL
Mt. Hawley Auxiliary	18/36	4,001' X 60'	MIRL		36- VASI REIL
Mt. Sterling Municipal	18/36	5,905' X 75'	MIRL		36- NPI PAPI
Mt. Vernon Outland	5/23	6,496' X 150'	HIRL	G	23- PIR MALSR
	15/33	3,146' X 100'	MIRL	PFC	33- VFR
Pekin Municipal	9/27	5,000' X 75'	MIRL		27- NPI PAPI REIL

TABLE 10: ILLINOIS PUBLIC USE AIRPORTS RUNWAY CHARACTERISTICS (CONTINUED)

Airport	Runway	Size	Runway Lights	Runway End	Runway End
Olney-Noble	11/29	4,099' X 75'	MIRL	11- NPI PAPI REIL	29- PAPI
	4/22	3,598' X 60'	MIRL	4- NPI REIL	22- VFR
Edgar County Airport	9/27	4,501' X 75'	MIRL	9- NPI VASI	27- NPI VASI REIL
	18/36	3,200' X 75'	MIRL	18- NPI VASI REIL	36- NPI VASI REIL
General Wayne A. Downing-Peoria International	13/31	10,104' X 150'	HIRL	13- PIR PAPI MALSR	31- PIR MALSR
	4/22	8,004' X 150'	HIRL	4- PIR PAPI MALSR	22- PIR PAPI
Pittsfield Penstone	13/31	4,000' X 60'	MIRL	13- NPI PAPI	31- NPI PAPI
Illinois Valley Regional	18/36	5,999' X 100'	MIRL	18- NPI	36- NPI ODALS
	7/25	3,999' X 75'	MIRL	7- NPI REIL	25- NPI REIL
Pinckneyville Du Quoin	18/36	3,999' X 60'	MIRL	18- NPI PAPI	36- NPI PAPI
	6/24	5,000' X 75'	MIRL	6- NPI PAPI	24- NPI PAPI
Chicago Executive	16/34	5,001' X 150'	HIRL	16- PIR PAPI REIL RLLS	34- PIR PAPI REIL
	12/30	4,415' X 75'	MIRL	12- NPI PAPI REIL	30- NPI PAPI REIL
Quincy Regional Airport	6/24	3,677' X 50'	HIRL	6- PAPI	24- VFR
	4/22	7,098' X 150'	HIRL	4- PIR PAPI MALSR	22- PIR PAPI REIL
	13/31	5,397' X 150'	MIRL	13- NPI PAPI	31- NPI PAPI

TABLE 10: ILLINOIS PUBLIC USE AIRPORTS RUNWAY CHARACTERISTICS (CONTINUED)

Airport	Runway	Size	Runway Lights	Runway End	Runway End
Rantoul National Aviation Center	9/27	5,001' X 75'	MIRL	9- NPI PAPI REIL	27- NPI PAPI REIL
	18/36	4,894' X 75'	MIRL	18- NPI	36- NPI
Crawford County	9/27	5,108' X 100'	MIRL	9- NPI VASI REIL	27- NPI VASI REIL
	17/35	3,398' X 75'	MIRL	17- NPI REIL	35- NPI
Rochelle Municipal	7/25	5,001' X 75'	MIRL	7- NPI PAPI REIL	25- NPI PAPI REIL
	9/27	5,001' X 75'	LIRL	9- NPI	27- NPI
Chicago Rockford International	7/25	10,002' X 150'	HIRL	7- PIR PAPI ALSF2	25- PIR PAPI REIL
	1/19	8,200' X 150'	HIRL	1- PIR MALSR	19- PIR PAPI REIL
Lewis University	2/20	6,500' X 100'	MIRL	2- NPI PAPI REIL	20- NPI PAPI REIL
	9/27	5,500' X 75'	MIRL	9- NPI PAPI REIL	27- NPI PAPI REIL
Salem-Lekrone	18/36	4,098' X 75'	MIRL	18- NPI PAPI REIL	36- NPI PAPI REIL
	13/31	4,001' X 75'	MIRL	13- NPI	31- NPI
Schaumburg Regional	11/29	3,800' X 100'	MIRL	11- PAPI REIL	29- PAPI REIL
	18/36	4,098' X 75'	MIRL	18- NPI	36- NPI PAPI
Shelby County	14/32	2,336' X 180'	None	14- VFR	32- VFR
	4/22	1,446' X 180'	None	4- VFR	22- VFR
Sparta Community	18/36	4,002' X 75'	MIRL	18- NPI PAPI REIL	36- NPI PAPI
	9/27	2,958' X 110'	None	9- VFR	27- VFR

TABLE 10: ILLINOIS PUBLIC USE AIRPORTS RUNWAY CHARACTERISTICS (CONTINUED)

Airport	Runway	Size	Runway Lights	Runway End	Runway End
Abraham Lincoln Capital	4/22	8,001' X 150'	HIRL	4- PIR VASI MALSR	22- PIR VASI MALSR
	13/31	7,400' X 150'	HIRL	13- PIR PAPI REIL	31- PIR VASI MALSR
Whiteside County	7/25	6,499' X 150'	HIRL	PFC	25- PIR MALSR
	18/36	3,900' X 100'	MIRL	G	36- REIL
Taylorville Municipal	18/36	4,001' X 75'	MIRL	18- NPI VASI REIL	36- NPI VASI
	9R/27L	3,501' X 60'	MIRL	9R- VASI REIL	27L- VASI REIL
	9L/27R	1,933' X 165'	None	9L- VFR	27R- VFR
Vandalia Municipal	18/36	3,751' X 100'	MIRL	PFC	36- NPI REIL
	9/27	3,001' X 75'	MIRL	9- VFR	27- REIL
Waukegan National	5/23	6,001' X 150'	HIRL	PFC	23- PIR VASI MALSR
	14/32	3,750' X 75'	MIRL	14- VASI	32- VFR
DuPage Airport	2L/20R	7,571' X 150'	HIRL	G	20R- PIR PAPI
	2R/20L	6,451' X 100'	MIRL	G	20L- NPI
	10/28	4,750' X 75'	HIRL	G	10- PIR VASI REIL RLLS
	15/33	3,399' X 100'	MIRL	15- PAPI REIL	33- REIL

TABLE 11: ILLINOIS AIRPORT OF THE YEAR WINNERS

Year	Primary	Reliever	GA >5000	GA <5000	Private
2022	Central Illinois Regional	Chicago DuPage	Greater Kankakee	Dixon	Erie Airpark
2021	Decatur Airport	Waukegan National	Southern Illinois Airport	Kewanee Municipal	Gen-Air Park
2020	Springfield Capital	St. Louis Downtown	Joliet Regional	Pekin Municipal	Frasca Field
2019	Quincy Regional	Lake in the Hills	Effingham County	Rochelle Municipal	Cushing Field
2018	Mid America St. Louis	Lewis University	Schaumburg Regional	Olney-Noble	St. Louis East Shafer
2017	Veterans Airport of Southern Illinois	Chicago Executive	Macomb Municipal	Sparta Community	Tri-County
2016	Chicago O'Hare	St. Louis Regional	Whiteside County	Centralia Municipal	Zelmer Memorial
2015	Quincy Regional	Chicago DuPage	Mount Vernon	Marshall County	Poplar Grove
2014	Peoria International	Lewis University	Vermilion Regional	Benton Municipal	Galt
2013	Rockford International	Chicago Executive	DeKalb Taylor	Illinois Valley Regional	Percival Springs
2012	Quad City International	Waukegan National	Greater Kankakee	Fairfield Municipal	Frasca Field
2011	Central Illinois Regional	Chicago DuPage	Coles County	Rochelle Municipal	Columbia - Sackman
2010	Springfield Capital	Lake in the Hills	Quincy Airport	Mount Carmel Municipal	Gen-Air Park
2009	Veterans Airport of Southern Illinois	St. Louis Downtown	Coles County	Morris Municipal	Cottonwood
2008	Central Illinois Regional	Lansing Municipal	Macomb Municipal	Harrisburg/Raleigh	Tri-County
2007	Rockford International	St. Louis Regional	Mount Vernon Outland	Havana Regional	Ogle County

TABLE 11: ILLINOIS AIRPORT OF THE YEAR WINNERS (CONTINUED)

Year	Primary	Reliever	GA >5000	GA <5000	Private
2006	Veterans Airport of Southern Illinois	Waukegan National	DeKalb Taylor	Greenville Airport	Cushing Field
2005	Peoria International	Lewis University	Southern Illinois Airport	Schaumburg Regional	Erie Airpark
2004	Quad City International	Palwaukee	Coles County	Litchfield Municipal	Zelmer Memorial
2003	Decatur Airport	Lansing Municipal	Jacksonville	Morris Municipal	St. Louis East Shafer
2002	Central Illinois Regional	St. Louis Downtown	Lawrenceville/ Vincennes	Litchfield Municipal	Columbia - Sackman
2001	Chicago Meigs Field	Mid America St. Louis	Greater Kankakee	Marshall County	Poplar Grove

AIRPORT PAVEMENT MANAGEMENT SYSTEM

The Airport Pavement Management System procedure was developed at the Construction Engineering Research Laboratory in Champaign, Illinois. The Illinois Department of Transportation instituted this procedure in 1980 and performs the survey at each public use airport on a three-year cycle through a consultant contract.

Each runway, taxiway and apron is divided into pavement sections that were constructed at the same time of consistent thickness and materials. A sample survey is then performed for each section, with the number of samples being dependent upon the variation of the distresses over the extent of the section. The actual survey measures the quantity and severity of each distress type, and these measurements are then passed through a computer program, which determines the Pavement Condition Index based upon these measurements and the distress type. The PCI scores are values ranging from 0-100. The results of the most recent surveys are presented in **Table 12**. These results are shown as line items for each runway but are aggregated for all taxiways and all aprons. The values shown are each line item's percentage of the individual PCI Scoring Groups.

Below is the link to the website for the PCI Program:
[Illinois 2020-2022 IDEA \(appliedpavement.com\)](https://www.appliedpavement.com/).



TABLE 12: APMS RESULTS

Greenville	2022	Overall	84	2019	Overall	84	2016	Overall	58
		Runway 18/36	92		Runway 18/36	100		Runway 18/36	49
		Taxiways	100		Taxiways	43		Taxiways	59
		Ramps	80		Ramps	73		Ramps	55
Harrisburg-Raleigh	2022	Overall	82	2019	Overall	88	2016	Overall	94
		Runway 6/24	82		Runway 6/24	86		Runway 6/24	97
		Runway 14/32	79		Runway 14/32	84		Runway 14/32	93
		Taxiways	83		Taxiways	94		Taxiways	96
Schaumburg Regional	2022	Ramps	87	2019	Ramps	87	2016	Ramps	95
		Overall	81		Overall	85		Overall	85
		Runway 11/29	93		Runway 11/29	95		Runway 11/29	95
		Taxiways	90		Taxiways	91		Taxiways	91
Chicago Rockford International	2022	Ramps	75	2019	Ramps	77	2016	Ramps	79
		Overall	81		Overall	83		Overall	85
		Runway 7/25	95		Runway 7/25	90		Runway 7/25	75
		Runway 1/19	96		Runway 1/19	93		Runway 1/19	95
		Taxiways	90		Taxiways	95		Taxiways	90
		Ramps	90		Ramps	85		Ramps	88

TABLE 12: APMS RESULTS (CONTINUED)

Salem-Leckrone	2022	Overall	80	2019	Overall	79	2016	Overall	56
		Runway 18/36	88		Runway 18/36	100		Runway 18/36	56
		Taxiways	75		Taxiways	50		Taxiways	58
		Ramps	100		Ramps	55		Ramps	47
Flora Municipal	2022	Overall	77	2019	Overall	82	2016	Overall	80
		Runway 3/21	70		Runway 3/21	75		Runway 3/21	74
		Taxiways	74		Taxiways	84		Taxiways	83
		Ramps	96		Ramps	97		Ramps	96
Fairfield Municipal	2022	Overall	76	2019	Overall	83	2016	Overall	87
		Runway 9/27	88		Runway 9/27	96		Runway 9/27	95
		Runway 18/36	62		Runway 18/36	67		Runway 18/36	81
		Taxiways	54		Taxiways	66		Taxiways	73
Pinckneyville Du Quoin	2022	Ramps	77	2019	Ramps	80	2016	Ramps	83
		Overall	75		Overall	88		Overall	73
		Runway 18/36	70		Runway 18/36	96		Runway 18/36	73
		Taxiways	76		Taxiways	59		Taxiways	76
		Ramps	100		Ramps	64		Ramps	67

TABLE 12: APMS RESULTS (CONTINUED)

Effingham County Memorial	2022	Overall	75	2019	Overall	82	2016	Overall	83
		Runway 11/29	84		Runway 11/29	81		Runway 11/29	85
		Runway 1/19	55		Runway 1/19	77		Runway 1/19	82
		Taxiways	69		Taxiways	74		Taxiways	78
		Ramps	89		Ramps	88		Ramps	92
Central Illinois Regional	2022	Overall	75	2019	Overall	76	2016	Overall	77
		Runway 2/20	84		Runway 2/20	87		Runway 2/20	83
		Runway 11/29	54		Runway 11/29	52		Runway 11/29	63
		Taxiways	92		Taxiways	96		Taxiways	90
		Ramps	80		Ramps	65		Ramps	85
Havana Regional	2022	Overall	75	2019	Overall	76	2016	Overall	89
		Overall	72		Overall	63		Overall	69
Dixon Municipal	2022	Runway 8/26	100	2019	Runway 8/26	53	2016	Runway 8/26	62
		Runway 12/30	59		Runway 12/30	58		Runway 12/30	68
		Taxiways	56		Taxiways	62		Taxiways	70
		Ramps	58		Ramps	72		Ramps	77

TABLE 12: APMS RESULTS (CONTINUED)

Taylorville Municipal	2022	Overall	70	2019	Overall	71	2016	Overall	70
		Runway 18/36	66		Runway 18/36	78		Runway 18/36	86
		Runway 9/27	60		Runway 9/27	56		Runway 9/27	63
		Taxiways	75		Taxiways	59		Taxiways	70
		Ramps	87		Ramps	99		Ramps	48
Metropolis	2022	Overall	69	2019	Overall	72	2016	Overall	78
		Runway 18/36	63		Runway 18/36	64		Runway 18/36	71
		Taxiways	82		Taxiways	85		Taxiways	90
		Ramps	71		Ramps	66		Ramps	81
		Overall	68		Overall	79		Overall	71
Pittsfield Penstone	2022	Runway 13/31	70	2019	Runway 13/31	73	2016	Runway 13/31	75
		Taxiways	69		Taxiways	100		Taxiways	37
		Ramps	65		Ramps	98		Ramps	73
		Overall	66		Overall	78		Overall	64
		Runway 6/24	68		Runway 6/24	92		Runway 6/24	56
Albertus (Freeport)	2022	Taxiways	57	2019	Taxiways	65	2016	Taxiways	77
		Ramps	60		Ramps	58		Ramps	80

TABLE 12: APMS RESULTS (CONTINUED)

Cairo Regional	2022	Overall	65	2019	Overall	76	2016	Overall	81
		Runway 14/32	75		Runway 14/32	84		Runway 14/32	86
		Runway 2/20	54		Runway 2/20	70		Runway 2/20	72
		Taxiways	53		Taxiways	46		Taxiways	77
		Ramps	62		Ramps	68		Ramps	85
Shelby County	2022	Overall	64	2019	Overall	71	2016	Overall	78
		Runway 18/36	65		Runway 18/36	74		Runway 18/36	85
		Taxiways	58		Taxiways	66		Taxiways	63
		Ramps	56		Ramps	62		Ramps	68
		Overall	63		Overall	65		Overall	72
Marshall County	2022	Runway 13/31	50	2019	Runway 13/31	63	2016	Runway 13/31	71
		Runway 18/36	77		Runway 18/36	89		Runway 18/36	100
		Taxiways	80		Taxiways	84		Taxiways	94
		Ramps	95		Ramps	49		Ramps	64
		Overall	62		Overall	70		Overall	77
Vandalia Municipal	2022	Runway 18/36	64	2019	Runway 18/36	74	2016	Runway 18/36	75
		Runway 9/27	57		Runway 9/27	63		Runway 9/27	77
		Taxiways	64		Taxiways	75		Taxiways	78
		Ramps	62		Ramps	69		Ramps	75
		Overall	62		Overall	70		Overall	77

TABLE 12: APMS RESULTS (CONTINUED)

Edgar County	2022	Overall	58	2019	Overall	59	2016	Overall	79
		Runway 9/27	41		Runway 9/27	45		Runway 9/27	79
		Runway 18/36	67		Runway 18/36	76		Runway 18/36	83
		Taxiways	100		Taxiways	46		Taxiways	55
		Ramps	44		Ramps	47		Ramps	76
Rantoul National Aviation Center	2022	Overall	56	2019	Overall	66	2016	Overall	71
		Runway 9/27	56		Runway 9/27	64		Runway 9/27	70
		Runway 18/36	50		Runway 18/36	63		Runway 18/36	66
		Taxiways	75		Taxiways	80		Taxiways	69
		Ramps	83		Ramps	90		Ramps	100
Mt. Hawley Auxiliary	2022	Overall	54	2019	Overall	74	2016	Overall	74
		Runway 18/36	35		Runway 18/36	65		Runway 18/36	73
		Taxiways	33		Taxiways	74		Taxiways	75
		Ramps	50		Ramps	77		Ramps	65
		Overall	49		Overall	62		Overall	68
Jacksonville	2022	Runway 13/31	40	2019	Runway 13/31	56	2016	Runway 13/31	64
		Runway 4/22	40		Runway 4/22	58		Runway 4/22	68
		Taxiways	48		Taxiways	64		Taxiways	66
		Ramps	70		Ramps	82		Ramps	84

TABLE 12: APMS RESULTS (CONTINUED)

Olney/Noble	2021	Overall	83	2019	Overall	89	2016	Overall	93
		Runway 11/29	90		Runway 11/29	100		Runway 11/29	100
		Runway 4/22	76		Runway 4/22	80		Runway 4/22	82
		Taxiways	66		Taxiways	82		Taxiways	98
		Ramps	93		Ramps	96		Ramps	96
Lewis University	2021	Overall	83	2019	Overall	88	2016	Overall	85
		Runway 2/20	94		Runway 2/20	95		Runway 2/20	96
		Runway 9/27	88		Runway 9/27	94		Runway 9/27	98
		Taxiways	95		Taxiways	94		Taxiways	80
		Ramps	85		Ramps	89		Ramps	93
Benton Municipal	2021	Overall	82	2019	Overall	89	2016	Overall	91
		Runway 18/36	83		Runway 18/36	90		Runway 18/36	93
		Taxiways	91		Taxiways	93		Taxiways	87
		Ramps	65		Ramps	67		Ramps	71
		Overall	80		Overall	84		Overall	86
Mt. Sterling	2021	Runway 18/36	83	2019	Runway 18/36	85	2016	Runway 18/36	86
		Taxiways	72		Taxiways	82		Taxiways	81
		Ramps	68		Ramps	75		Ramps	77

TABLE 12: APMS RESULTS (CONTINUED)

Aurora Municipal	2021	Overall	79	2019	Overall	83	2016	Overall	84
		Runway 9/27	95		Runway 9/27	95		Runway 9/27	95
		Runway 15/33	92		Runway 15/33	98		Runway 15/33	98
		Runway 18/36	17		Runway 18/36	19		Runway 18/36	39
		Taxiways	90		Taxiways	91		Taxiways	95
		Ramps	87		Ramps	85		Ramps	85
		Overall	78		Overall	86		Overall	81
Veterans Airport of Southern Illinois	2021	Runway 2/20	84	2019	Runway 2/20	89	2016	Runway 2/20	93
		Runway 11/29	93		Runway 11/29	100		Runway 11/29	55
		Taxiways	83		Taxiways	90		Taxiways	85
		Ramps	70		Ramps	80		Ramps	84
		Overall	76		Overall	81		Overall	86
		Runway 14L/32R	79		Runway 14L/32R	86		Runway 14L/32R	89
		Runway 14R/32L			Runway 14R/32L			Runway 14R/32L	
MidAmerica St. Louis	2021	Taxiways	78	2019	Taxiways	82	2016	Taxiways	87
		Ramps	83		Ramps	90		Ramps	90

TABLE 12: APMS RESULTS (CONTINUED)

Coles County Memorial	2021	Overall	73	2019	Overall	68	2016	Overall	70
		Runway 11/29	77		Runway 11/29	77		Runway 11/29	100
		Runway 6/24	58		Runway 6/24	65		Runway 6/24	68
		Taxiways	65		Taxiways	50		Taxiways	43
		Ramps	57		Ramps	75		Ramps	55
Decatur	2021	Overall	71	2019	Overall	71	2016	Overall	65
		Runway 6/24	92		Runway 6/24	80		Runway 6/24	60
		Runway 12/30	59		Runway 12/30	62		Runway 12/30	58
		Runway 18/36	51		Runway 18/36	57		Runway 18/36	61
		Taxiways	86		Taxiways	84		Taxiways	87
Quincy Regional	2021	Ramps	77	2019	Ramps	79	2016	Ramps	83
		Overall	70		Overall	75		Overall	68
		Runway 4/22	55		Runway 4/22	65		Runway 4/22	64
		Runway 18/36	74		Runway 18/36	80		Runway 18/36	81
		Runway 13/31	92		Runway 13/31	100		Runway 13/31	55
Taxiways	70	Taxiways	60	Taxiways	65				
Ramps	62	Ramps	64	Ramps	65				

TABLE 12: APMS RESULTS (CONTINUED)

Mt. Vernon Outland	2021	Overall	69	2019	Overall	74	2016	Overall	83
		Runway 5/23	63		Runway 5/23	65		Runway 5/23	93
		Runway 15/33	76		Runway 15/33	82		Runway 15/33	75
		Taxiways	70		Taxiways	82		Taxiways	86
		Ramps	80		Ramps	89		Ramps	90
Monmouth	2021	Overall	68	2019	Overall	74	2016	Overall	77
		Runway 3/21	63		Runway 3/21	65		Runway 3/21	67
		Taxiways	92		Taxiways	100		Taxiways	100
		Ramps	74		Ramps	84		Ramps	96
		Overall	68		Overall	68		Overall	68
Built Field	2021	Runway 9/27	76	Runway 9/27	76	Runway 9/27	76	Runway 9/27	76
		Taxiways	47	Taxiways	47	Taxiways	47	Taxiways	47
		Ramps	58	Ramps	58	Ramps	58	Ramps	58

TABLE 12: APMS RESULTS (CONTINUED)

Southern Illinois	2021	Overall	67	2019	Overall	74	2016	Overall	79	
		Runway 18L/36R	66		Runway 18L/36R	72		Runway 18L/36R	78	
		Runway 18R/36L	62		Runway 18R/36L	76		Runway 18R/36L	78	
		Runway 6/24	80		Runway 6/24	92		Runway 6/24	96	
		Taxiways	70		Taxiways	72		Taxiways	75	
		Ramps	61		Ramps	70		Ramps	82	
	Greater Beardstown	2021	Overall	67	2019	Overall	71	2016	Overall	73
			Runway 18/36	66		Runway 18/36	70		Runway 18/36	71
			Taxiways	70		Taxiways	76		Taxiways	75
			Ramps	67		Ramps	72		Ramps	80
			Overall	66		Overall	71		Overall	77
			Runway 3/21	66		Runway 3/21	68		Runway 3/21	80
Vermilion Regional	2021	Runway 16/34	85	2019	Runway 16/34	90	2016	Runway 16/34	95	
		Taxiways	49		Taxiways	60		Taxiways	70	
		Ramps	39		Ramps	65		Ramps	75	

TABLE 12: APMS RESULTS (CONTINUED)

University of Illinois – Willard	2021	Overall	65	2019	Overall	59	2016	Overall	69
		Runway 14L/32R	35		Runway 14L/32R	50		Runway 14L/32R	62
		Runway 4/22	100		Runway 4/22	54		Runway 4/22	63
		Runway 14R/32L	65		Runway 14R/32L	59		Runway 14R/32L	65
		Taxiways	76		Taxiways	55		Taxiways	75
		Ramps	48		Ramps	60		Ramps	58
Waukegan National	2021	Overall	65	2019	Overall	52	2016	Overall	56
		Runway 5/23	97		Runway 5/23	26		Runway 5/23	28
		Runway 14/32	57		Runway 14/32	64		Runway 14/32	80
		Taxiways	56		Taxiways	70		Taxiways	80
		Ramps	78		Ramps	85		Ramps	83
		Overall	64		Overall	69		Overall	73
St. Louis Downtown	2021	Runway 12R/30L	61	2019	Runway 12R/30L	66	2016	Runway 12R/30L	77
		Runway 12L/30R	73		Runway 12L/30R	79		Runway 12L/30R	82
		Runway 5/23	17		Runway 5/23	41		Runway 5/23	46
		Taxiways	75		Taxiways	75		Taxiways	80
		Ramps	63		Ramps	75		Ramps	85
		Overall	64		Overall	69		Overall	73

TABLE 12: APMS RESULTS (CONTINUED)

Carmi Municipal	2021	Overall	63	2019	Overall	73	2016	Overall	76
		Runway 18/36	71		Runway 18/36	73		Runway 18/36	74
		Taxiways	30		Taxiways	64		Taxiways	72
		Ramps	100		Ramps	100		Ramps	100
Macomb	2021	Overall	62	2019	Overall	71	2016	Overall	77
		Runway 9/27	57		Runway 9/27	70		Runway 9/27	79
		Taxiways	56		Taxiways	63		Taxiways	68
		Ramps	95		Ramps	97		Ramps	98
Ingersoll (Canton)	2021	Overall	59	2019	Overall	72	2016	Overall	77
		Runway 18/36	58		Runway 18/36	73		Runway 18/36	78
		Runway 9/27	59		Runway 9/27	79		Runway 9/27	84
		Taxiways	85		Taxiways	90		Taxiways	100
Galesburg Municipal	2021	Ramps	42	2019	Ramps	56	2016	Ramps	58
		Overall	59		Overall	64		Overall	71
		Runway 3/21	63		Runway 3/21	62		Runway 3/21	70
		Runway 10/28	62		Runway 10/28	66		Runway 10/28	78
		Taxiways	58	Taxiways	65	Taxiways	72	Taxiways	72
		Ramps	50	Ramps	54	Ramps	60	Ramps	60

TABLE 12: APMS RESULTS (CONTINUED)

Centralia Municipal	2021	Overall	56	2019	Overall	60	2016	Overall	71
		Runway 18/36	56		Runway 18/36	58		Runway 18/36	66
		Runway 9/27	52		Runway 9/27	57		Runway 9/27	75
		Taxiways	56		Taxiways	58		Taxiways	72
		Ramps	62		Ramps	70		Ramps	77
St. Louis Regional	2021	Overall	53	2019	Overall	64	2016	Overall	68
		Runway 11/29	34		Runway 11/29	65		Runway 11/29	65
		Runway 17/35	47		Runway 17/35	63		Runway 17/35	65
		Taxiways	51		Taxiways	58		Taxiways	59
		Ramps	68		Ramps	90		Ramps	90
Lake in the Hills	2021	Overall	53	2019	Overall	60	2016	Overall	64
		Runway 8/26	32		Runway 8/26	40		Runway 8/26	52
		Taxiways	75		Taxiways	75		Taxiways	85
		Ramps	50		Ramps	58		Ramps	75
		Overall	53		Overall	58		Overall	69
Bolingbrook Clow International	2021	Runway 18/36	68	2019	Runway 18/36	79	2016	Runway 18/36	100
		Taxiways	18		Taxiways	21		Taxiways	32
		Ramps	49		Ramps	40		Ramps	13

TABLE 12: APMS RESULTS (CONTINUED)

Logan County	2020	Overall	92	2017	Overall	57	
		Runway 3/21	100		Runway 3/21	55	
		Taxiways	70		Taxiways	85	
		Ramps	100		Ramps	62	
Crawford County	2020	Overall	87	2017	Overall	85	
		Runway 9/27	82		Runway 9/27	89	
		Runway 17/35	95		Runway 17/35	100	
		Taxiways	93		Taxiways	94	
		Ramps	98		Ramps	65	
Quad City International	2020	Overall	86	2017	Overall	89	
		Runway 9/27	98		Runway 9/27	94	
		Runway 13/31	97		Runway 13/31	83	
		Runway 5/23	88		Runway 5/23	88	
		Taxiways	90		Taxiways	87	
		Ramps	83		Ramps	87	
Casey Municipal	2020	Overall	85	2017	Overall	87	
		Runway 4/22	86		Runway 4/22	93	
		Taxiways	79		Taxiways	87	
		Ramps	90		Ramps	93	

TABLE 12: APMS RESULTS (CONTINUED)

Joliet	2020	Overall	85	2017	Overall	84	
		Runway 13/31	89		Runway 13/31	91	
		Taxiways	86		Taxiways	90	
		Ramps	76		Ramps	89	
Kewanee Municipal	2020	Overall	85	2017	Overall	82	
		Runway 9/27	96		Runway 9/27	100	
		Runway 1/19	100		Runway 1/19	59	
		Taxiways	65		Taxiways	65	
		Ramps	83		Ramps	88	
DuPage Airport	2020	Overall	83	2017	Overall	85	
		Runway 2L/20R	96		Runway 2L/20R	96	
		Runway 2R/20L	95		Runway 2R/20L	96	
		Runway 15/33	49		Runway 15/33	60	
		Runway 10/28	78		Runway 10/28	88	
		Taxiways	92		Taxiways	93	
		Ramps	92		Ramps	95	

TABLE 12: APMS RESULTS (CONTINUED)

Pekin Municipal	2020	Overall	83	2017	Overall	73	
		Runway 9/27	100		Runway 9/27	59	
		Taxiways	72		Taxiways	85	
		Ramps	68		Ramps	80	
Rochelle Municipal	2020	Overall	83	2017	Overall	67	
		Runway 7/25	99		Runway 7/25	64	
		Taxiways	87		Taxiways	97	
		Ramps	100		Ramps	47	
Sparta Community	2020	Overall	80	2017	Overall	87	
		Runway 18/36	88		Runway 18/36	93	
		Taxiways	68		Taxiways	81	
		Ramps	82		Ramps	85	
Litchfield Municipal	2020	Overall	80	2017	Overall	84	
		Runway 18/36	69		Runway 18/36	75	
		Runway 9/27	82		Runway 9/27	87	
		Taxiways	84		Taxiways	90	
		Ramps	82		Ramps	90	

TABLE 12: APMS RESULTS (CONTINUED)

Chicago Executive	2020	Overall	77	2017	Overall	82
		Runway 16/34	81		Runway 16/34	90
		Runway 12/30	100		Runway 12/30	65
		Runway 6/24	51		Runway 6/24	60
		Taxiways	80		Taxiways	85
		Ramps	34		Ramps	41
Mt. Carmel	2020	Overall	76	2017	Overall	79
		Runway 13/31	72		Runway 13/31	78
		Runway 4/22	70		Runway 4/22	73
		Taxiways	94		Taxiways	94
		Ramps	87		Ramps	90
General Wayne A. Downing Peoria International	2020	Overall	73	2017	Overall	73
		Runway 13/31	93		Runway 13/31	86
		Runway 4/22	49		Runway 4/22	62
		Taxiways	61		Taxiways	62
		Ramps	95		Ramps	90

TABLE 12: APMS RESULTS (CONTINUED)

Illinois Valley Regional	2020	Overall	71	2017	Overall	82
		Runway 18/36	75		Runway 18/36	88
		Runway 7/25	66		Runway 7/25	75
		Taxiways	71		Taxiways	69
		Ramps	98		Ramps	99
Greater Kankakee	2020	Overall	69	2017	Overall	74
		Runway 4/22	79		Runway 4/22	92
		Runway 16/34	66		Runway 16/34	70
		Taxiways	58		Taxiways	65
		Ramps	57		Ramps	70
Lansing Municipal	2020	Overall	69	2017	Overall	72
		Runway 9/27	70		Runway 9/27	73
		Runway 18/36	65		Runway 18/36	68
		Taxiways	57		Taxiways	65
		Ramps	84		Ramps	82

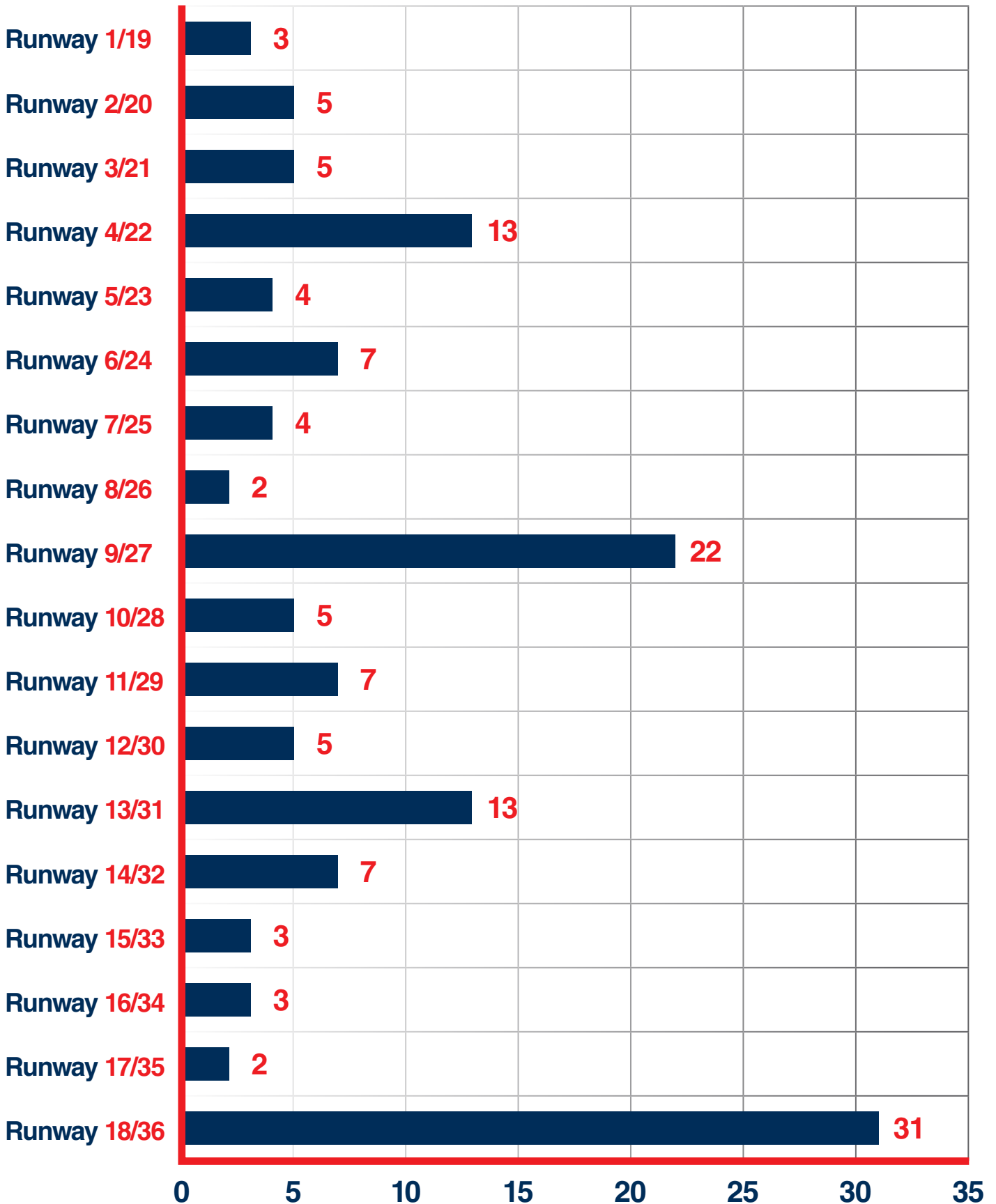
TABLE 12: APMS RESULTS (CONTINUED)

Abraham Lincoln Capital Airport	2020	Overall	68	2017	Overall	74	
		Runway 4/22	74		Runway 4/22	82	
		Runway 13/31	56		Runway 13/31	60	
		Taxiways	72		Taxiways	75	
		Ramps	70		Ramps	75	
Morris	2020	Overall	67	2017	Overall	73	
		Runway 18/36	61		Runway 18/36	67	
		Taxiways	64		Taxiways	75	
		Ramps	75		Ramps	80	
Pontiac	2020	Overall	67	2017	Overall	73	
		Runway 6/24	58		Runway 6/24	68	
		Taxiways	100		Taxiways	98	
		Ramps	80		Ramps	98	
Whiteside County	2020	Overall	62	2017	Overall	73	
		Runway 7/25	59		Runway 7/25	73	
		Runway 18/36	62		Runway 18/36	65	
		Taxiways	76		Taxiways	98	
		Ramps	53		Ramps	64	

TABLE 12: APMS RESULTS (CONTINUED)

Lawrenceville/Vincennes International	2020	Overall	62	2017	Overall	67
		Runway 18/36	56		Runway 18/36	59
		Runway 9/27	60		Runway 9/27	67
		Taxiways	69		Taxiways	72
		Ramps	71		Ramps	65
Tri-Township	2020	Overall	59	2017	Overall	65
		Runway 13/31	56		Runway 13/31	59
		Taxiways	58		Taxiways	70
		Ramps	76		Ramps	65
		Overall	50		Overall	63
DeKalb Taylor Municipal	2020	Runway 2/20	43	2017	Runway 2/20	64
		Runway 9/27	52		Runway 9/27	60
		Taxiways	40		Taxiways	58
		Ramps	54		Ramps	70

NUMBER OF EACH PAVED RUNWAY AT ILLINOIS PUBLIC USE AIRPORTS



SURFACE WEATHER OBSERVATION STATIONS

A surface weather observation station provides continuous real-time weather reports by gathering, analyzing and disseminating information from strategically located sensors, twenty-four hours a day. A complete new weather report is generated each minute and is available for flight planning via direct-dial telephone or en route by accessing the broadcast frequency.

In Illinois, there are three types of surface weather observation:

- Automated Weather Observing Systems (AWOS III)
- Automated Surface Observing System (ASOS)
- Automated Weather Observing Systems (AWOS AV)

AWOS III provides measurements of temperature, dew point, wind speed and direction, altimeter setting, density altitude, visibility, precipitation, and cloud height and cover.

ASOS provides all the measurements contained in the AWOS III plus the type of precipitation and the type of cloud cover, such as fog or haze.

AWOS AV provides wind speed, wind direction, temperature/relative humidity, pressure and visibility.

The Surface Weather Observation Stations in Illinois map shows locations of all AWOS III, ASOS, and AWOS AV units currently online. **Table 13** is a listing of all online stations along with the type of system, telephone number and broadcast frequency.



TABLE 13: ILLINOIS SURFACE WEATHER OBSERVATION STATIONS

Airport	Type	Phone Number	Frequency
Southern Illinois	ASOS	618-529-1821	119.725
Quad City International	ASOS	309-732-8731	121.2
General Wayne A. Downing Peoria International	ASOS	309-697-3611	126.1
Chicago Rockford International	ASOS	815-484-6229	127.6
Abraham Lincoln Capital	ASOS	217-535-1444	127.65
DuPage Airport	ASOS	630-587-3668	132.075
St. Louis Downtown	ASOS	618-332-0001	121.45
Aurora Municipal	ASOS	630-466-5622	125.85
Chicago Midway International Airport	ASOS	773-884-4424	132.75
Chicago O'Hare International	ASOS	773-462-0118	–
Chicago Executive	ASOS	847-465-0291	124.2
Decatur Airport	ASOS	217-429-0052	126.35
Waukegan National	ASOS	847-782-0876	132.4
University of Illinois – Willard	ASOS	217-355-4072	124.85
Coles County Memorial	ASOS	217-234-8442	118.475
Lawrenceville/Vincennes	ASOS	618-943-5252	118
Quincy Regional	ASOS	217-885-3319	121.425
MidAmerica St. Louis	ATIS	–	128.7
Cairo Regional	AWOS III	618-734-9173	118.025
Vermilion County	AWOS III	217-442-4660	119.275
Flora Municipal	AWOS III	618-662-8355	120.175
Harrisburg-Raleigh	AWOS III	618-253-3010	135.925
Jacksonville Municipal	AWOS III	217-243-6379	120.525
Greater Kankakee	AWOS III	815-939-4044	128.475

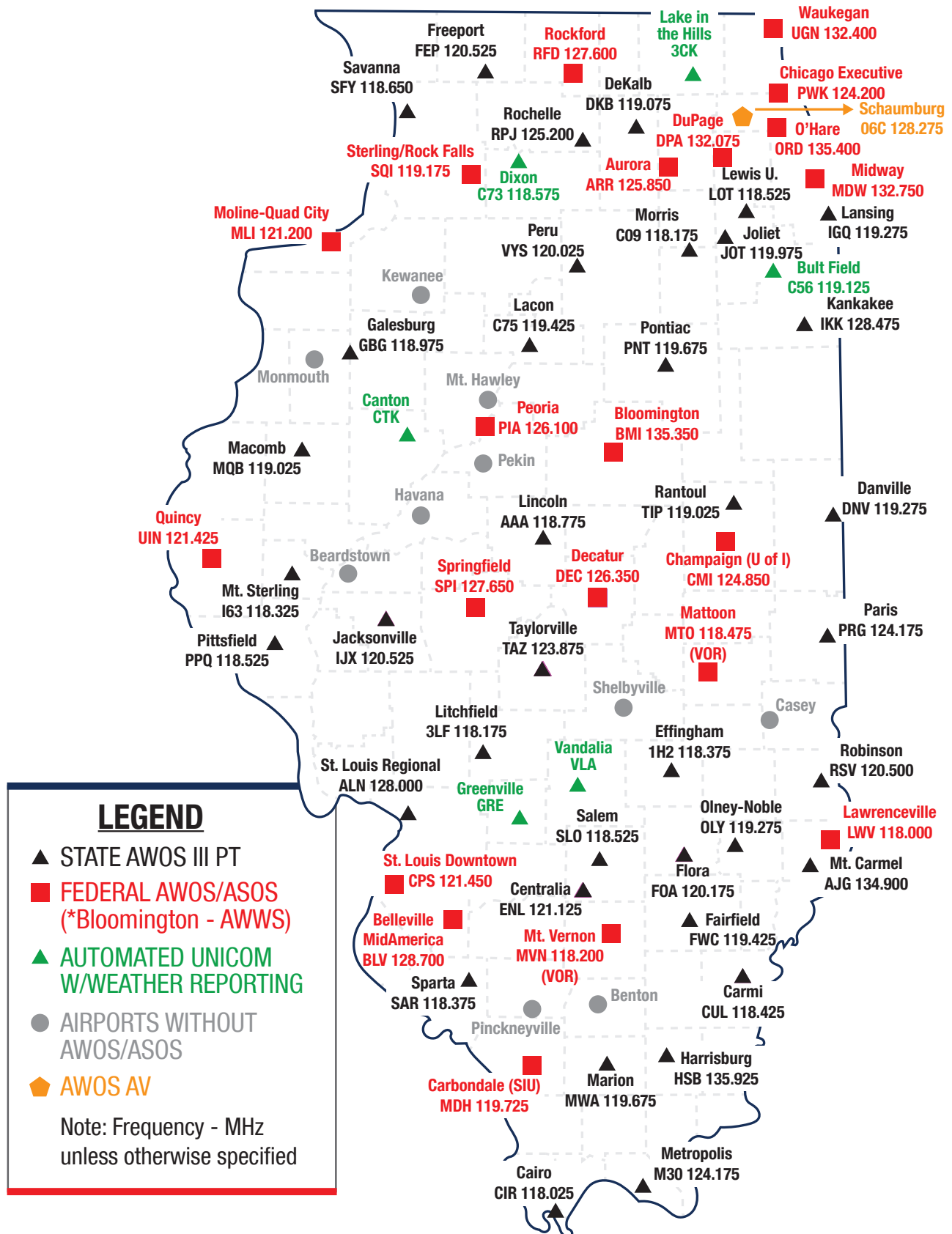
TABLE 13: ILLINOIS SURFACE WEATHER OBSERVATION STATIONS (CONTINUED)

Airport	Type	Phone Number	Frequency
Litchfield Municipal	AWOS III	217-324-4735	118.175
Macomb Municipal	AWOS III	309-837-4022	119.025
Olney-Noble	AWOS III	618-393-4416	119.275
Crawford County	AWOS III	618-586-2772	120.5
Salem-Leckrone	AWOS III	618-548-0469	118.525
Sparta Community	AWOS III	618-443-3296	118.375
Carmi Municipal	AWOS III	618-382-3760	118.425
Centralia Municipal	AWOS III	618-533-4417	121.125
DeKalb Taylor Municipal	AWOS III	815-748-2350	119.075
Fairfield Municipal	AWOS III	618-847-4709	119.425
Freeport Municipal	AWOS III	815-233-4472	120.525
Galesburg Municipal	AWOS III	309-343-3711	118.975
Metropolis Municipal	AWOS III	618-524-7483	124.175
Morris Municipal	AWOS III	815-941-1815	118.175
Mt. Carmel Municipal	AWOS III	618-948-2184	134.9
Illinois Valley Regional	AWOS III	815-223-8442	120.025
Pittsfield Penstone	AWOS III	217-285-1428	118.525
Pontiac Municipal	AWOS III	815-844-0923	119.675
Rantoul National Aviation Center	AWOS III	217-892-4999	119.025
Rochelle Municipal	AWOS III	815-562-2955	125.2
Schaumburg Regional	AWOS III	847-895-2887	128.275
Taylorville Municipal	AWOS III	217-824-9323	123.875
Effingham County	AWOS III	217-536-5876	118.375
Marshall County	AWOS III	309-246-3089	119.425
Logan County	AWOS III	217-732-9605	118.775

TABLE 13: ILLINOIS SURFACE WEATHER OBSERVATION STATIONS (CONTINUED)

Airport	Type	Phone Number	Frequency
Edgar County	AWOS III	217-465-4304	124.175
Joliet Regional	AWOS III	815-730-9560	119.975
Lewis University	AWOS III	815-588-4802	118.525
St. Louis Regional	AWOS III	618-259-7231	128
Veterans Airport of Southern Illinois	AWOS III	618-942-8877	119.675
Central Illinois Regional Airport	AWOS III PT	309-661-9478	135.35
Mt. Vernon Outland	AWOS III PT	618-242-7933	118.2
Tri-Township	AWOS III PT	815-273-4429	118.65
Lansing Municipal	AWOS III PT	708-889-6319	119.275
Mt. Sterling Municipal	AWOS III PT	217-773-4082	118.325
Whiteside County	AWOS III PT	815-626-2704	119.175
Greenville	AWOS AV	618-664-1939	123.05
Dixon Municipal	AWOS AV	815-288-2039	118.575
Vandalia Municipal	AWOS AV	618-283-9595	122.8
Bult Field	AWOS AV	708-534-5256	119.125

Illinois AWOS/ASOS Locations



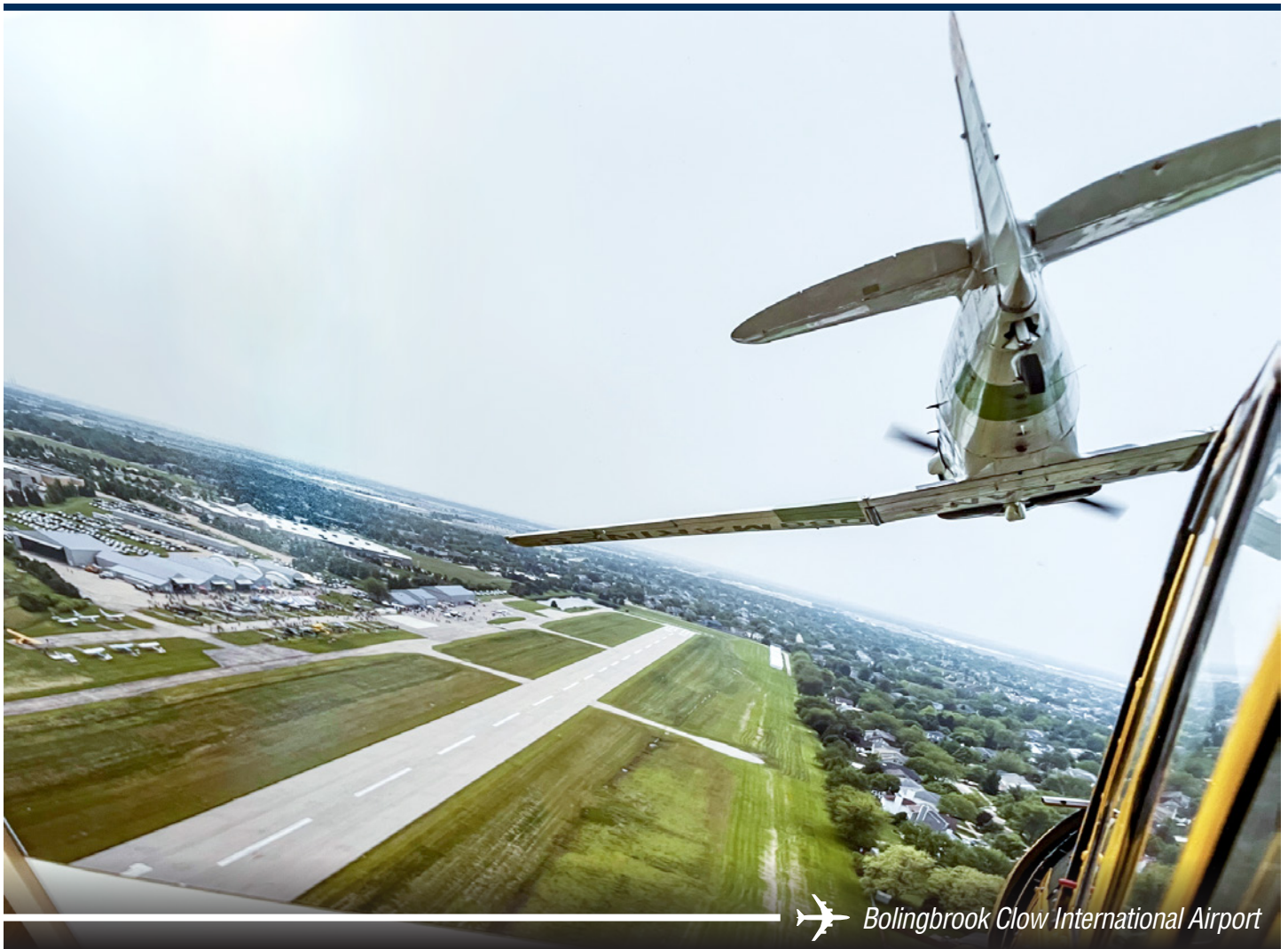
AVIATION ECONOMIC IMPACT ANALYSIS

Illinois' aviation system is a vital resource to the state's economy. Illinois airports serve as a gateway to the state's economy by providing passenger and freight cargo services, as well as employment opportunities. The aviation system in Illinois connects the state to national and international communities and economies far beyond its midwestern borders.

The 2020 Illinois Aviation Economic Impact Analysis was conducted by the Illinois Department of Transportation and utilizes 2019 data to determine the economic impacts of each airport in the state. **Table 14** shows economic impact.

Airport and visitor spending totaled more than \$59.6 billion in 2019, which is up from \$50.9 billion in 2015 at an increase of approximately 17%.

Table 15 shows the total acreage of each airport, along with its longest runway, airport elevation and the total amount of pavement inspected in square feet. Total pavement inspected from 2019-2022 increased 3.8% over total pavement inspected from 2018-2021.



 Bolingbrook Clow International Airport

TABLE 14: ILLINOIS PUBLIC USE AIRPORTS ECONOMIC IMPACT

Airport	Economic Impact	Jobs	Visitor Spending
Chicago O'Hare International	\$37,100,000,000	217,560	\$15,000,000,000
Chicago Midway International Airport	\$8,500,000,000	53,945	\$5,400,000,000
Rockford International	\$4,700,000,000	21,476	\$56,700,000
MidAmerica St. Louis	\$3,100,000,000	23,442	\$31,400,000
DuPage Airport	\$1,500,000,000	5,524	\$66,500,000
Quad City International	\$647,300,000	4,386	\$129,600,000
Gen. Wayne A. Downing Peoria International	\$575,700,000	4,333	\$125,600,000
St. Louis Regional	\$479,500,000	1,533	\$3,800,000
Chicago Executive	\$429,100,000	2,199	\$46,700,000
St. Louis Downtown	\$422,100,000	1,522	\$13,600,000
Abraham Lincoln Capital	\$370,800,000	2,630	\$32,900,000
Central Illinois Regional Airport	\$217,800,000	1,383	\$56,400,000
Waukegan National	\$181,600,000	918	\$32,700,000
University of Illinois – Willard	\$180,000,000	1,238	\$41,200,000
Aurora Municipal	\$139,900,000	748	\$18,200,000
Southern Illinois Airport	\$122,300,000	538	\$2,300,000
Lawrenceville/Vincennes International	\$110,600,000	583	\$1,000,000
Lewis University	\$92,800,000	518	\$16,900,000
Veterans Airport of Southern Illinois	\$84,700,000	652	\$7,600,000
Decatur Airport	\$74,600,000	739	\$17,200,000
Rantoul National Aviation Center	\$66,200,000	326	\$604,000
Mt. Vernon Outland	\$40,200,000	278	\$3,900,000
Greater Kankakee	\$37,600,000	455	\$7,900,000
Bolingbrook Clow International	\$34,000,000	194	\$4,100,000
Schaumburg Regional	\$33,900,000	202	\$5,800,000

TABLE 14: ILLINOIS PUBLIC USE AIRPORTS ECONOMIC IMPACT (CONTINUED)

Airport	Economic Impact	Jobs	Visitor Spending
Lake in the Hills	\$29,400,000	170	\$6,200,000
Coles County Memorial	\$27,200,000	231	\$3,900,000
Quincy Regional	\$24,700,000	158	\$6,300,000
Lansing Municipal	\$23,200,000	145	\$5,400,000
DeKalb Taylor Municipal	\$22,000,000	148	\$6,400,000
Illinois Valley Regional	\$21,400,000	134	\$2,000,000
Rochelle Municipal	\$17,100,000	101	\$434,000
Morris Municipal	\$15,200,000	130	\$9,000,000
Joliet Regional	\$15,000,000	82	\$1,900,000
Whiteside County	\$13,000,000	81	\$3,100,000
Bult Field	\$11,500,000	75	\$3,100,000
Vermilion Regional	\$10,500,000	75	\$1,500,000
Taylorville Municipal	\$10,500,000	38	\$98,000
Effingham County	\$9,600,000	82	\$5,000,000
Pekin Municipal	\$9,300,000	45	\$519,000
Galesburg Municipal	\$8,900,000	77	\$2,500,000
Jacksonville Municipal	\$8,100,000	43	\$1,600,000
Centralia Municipal	\$8,000,000	55	\$462,000
Sparta Community	\$7,300,000	55	\$1,700,000
Macomb Municipal	\$6,700,000	42	\$989,000
Pontiac Municipal	\$6,600,000	48	\$407,000
Dixon Municipal	\$5,600,000	54	\$4,500,000
Mt. Sterling Municipal	\$5,300,000	30	\$62,000
Greenville	\$5,200,000	64	\$186,000
Vandalia	\$5,000,000	18	\$51,000

TABLE 14: ILLINOIS PUBLIC USE AIRPORTS ECONOMIC IMPACT (CONTINUED)

Airport	Economic Impact	Jobs	Visitor Spending
Logan County	\$4,800,000	38	\$99,000
Casey Municipal	\$4,100,000	25	\$268,000
Pittsfield Penstone	\$3,900,000	19	\$69,000
Marshall County	\$3,400,000	25	\$437,000
Litchfield Municipal	\$3,000,000	19	\$376,000
Mt. Hawley Auxiliary	\$2,900,000	23	\$1,500,000
Albertus (Freeport)	\$2,800,000	24	\$936,000
Kewanee Municipal	\$2,500,000	19	\$549,000
Crawford County	\$2,300,000	17	\$487,000
Olney-Noble	\$2,200,000	18	\$247,000
Flora Municipal	\$2,000,000	15	\$156,000
Carmi Municipal	\$1,800,000	20	\$341,000
Salem-Leckrone	\$1,600,000	11	\$307,000
Harrisburg-Raleigh	\$1,500,000	11	\$563,000
Fairfield Municipal	\$1,500,000	6	\$65,000
Mt. Carmel Municipal	\$1,500,000	18	\$374,000
Pinckneyville-Du Quoin	\$1,500,000	11	\$292,000
Edgar County	\$1,200,000	12	\$155,000
Ingersoll (Canton)	\$1,200,000	18	\$147,000
Havana Regional	\$1,200,000	3	\$12,000
Cairo Regional	\$1,100,000	11	\$74,000
Shelby County	\$1,100,000	9	\$537,000
Greater Beardstown	\$915,000	7	\$47,000
Tri-Township	\$661,000	6	\$87,000
Monmouth Municipal	\$503,000	4	\$81,000

TABLE 14: ILLINOIS PUBLIC USE AIRPORTS ECONOMIC IMPACT (CONTINUED)

Airport	Economic Impact	Jobs	Visitor Spending
Metropolis Municipal	\$307,000	3	\$96,000
Benton Municipal	\$169,000	2	\$86,000



TABLE 15: LONGEST RUNWAY

Airport	Longest Runway	Acres	Elevation	Total Pavement ft ²
Chicago O'Hare International	13,000'	7,627	680'	–
Gen. Wayne A. Downing Peoria International	10,104'	3,800	661'	5,842,280
Chicago Rockford International	10,002'	2,900	742'	12,709,065
Quad City International	10,002'	2,021	590'	8,162,330
MidAmerica St. Louis	10,000'	7,003	459'	4,976,361
Decatur Airport	8,496'	2,100	682'	5,572,350
University of Illinois – Willard	8,101'	1,799	755'	5,148,502
St. Louis Regional	8,099'	2,250	544'	4,259,215
Veterans Airport of Southern Illinois	8,012'	1,300	472'	3,398,668
Abraham Lincoln Capital	8,001'	2,300	598'	6,476,749
Central Illinois Regional	8,000'	1,968	871'	5,682,890
DuPage Airport	7,571'	2,800	759'	7,252,027
Quincy Regional Airport	7,098'	1,101	769'	4,356,770
DeKalb Taylor Municipal	7,026'	316	913'	2,240,025
St. Louis Downtown	7,002'	1,013	413'	4,357,856
Chicago Midway International Airport	6,522'	650	620'	–
Southern Illinois Airport	6,506'	920	411'	3,243,796
Aurora Municipal	6,501'	1,100	712'	3,947,875
Coles County Memorial	6,501'	1,225	722'	3,305,595
Lewis University	6,500'	732	679'	3,343,992
Whiteside County	6,499'	437	648'	2,080,265
Mt. Vernon Outland	6,496'	1,100	480'	2,544,469
Vermilion Regional	6,006'	817	697'	2,039,560
Waukegan National	6,001'	600	728'	3,256,365

TABLE 15: LONGEST RUNWAY (CONTINUED)

Airport	Longest Runway	Acres	Elevation	Total Pavement ft ²
Illinois Valley Regional	5,999'	200	654'	1,401,300
Greater Kankakee	5,981'	950	630'	2,018,025
Mt. Sterling Municipal	5,905'	200	734'	675,590
Galesburg Municipal	5,792'	623	764'	2,227,533
Albertus (Freeport)	5,504'	188	859'	1,216,685
Morris Municipal	5,501'	240	585'	1,075,525
Lawrenceville/Vincennes	5,199'	3,067	430'	1,948,650
Crawford County	5,108'	432	461'	1,040,975
Effingham County Memorial	5,103'	651	585'	1,147,957
Macomb Municipal	5,100'	360	706'	958,107
Harrisburg-Raleigh	5,013'	398	398'	943,669
Flora Municipal	5,003'	249	473'	652,478
Chicago Executive	5,001'	411	647'	2,890,200
Rantoul National Aviation Center	5,001'	1,192	738'	1,113,996
Centralia Municipal	5,001'	314	534'	1,107,107
Bult Field	5,001'	130	790'	1,036,760
Rochelle Municipal	5,001'	113	781'	641,956
Jacksonville Municipal	5,000'	468	624'	1,219,370
Pekin Municipal	5,000'	215	530'	886,250
Pontiac Municipal	5,000'	311	666'	543,125
Edgar County	4,501'	180	654'	778,597
Mt. Carmel Municipal	4,500'	603	429'	986,120
Kewanee Municipal	4,500'	580	858'	832,810
Olney-Noble	4,099'	375	482'	841,538
Salem-Leckrone	4,098'	364	573'	643,972

TABLE 15: LONGEST RUNWAY (CONTINUED)

Airport	Longest Runway	Acres	Elevation	Total Pavement ft ²
Shelby County	4,098'	215	619'	628,906
Marshall County	4,003'	247	585'	892,870
Lansing Municipal	4,002'	650	620'	1,736,320
Litchfield Municipal	4,002'	415	691'	1,059,730
Greenville	4,002'	492	541'	675,111
Sparta Community	4,002'	200	538'	559,600
Metropolis Municipal	4,002'	194	384'	558,526
Benton Municipal	4,002'	110	444'	415,635
Taylorville Municipal	4,001'	101	622'	1,074,908
Mt. Hawley Auxiliary	4,001'	84	793'	843,920
Cairo Regional	4,001'	470	322'	830,355
Tri-Township	4,001'	140	616'	432,125
Casey Municipal	4,001'	112	655'	421,050
Fairfield Municipal	4,000'	173	434'	608,364
Carmi Municipal	4,000'	187	388'	534,108
Pittsfield Penstone	4,000'	300	710'	453,422
Logan County	4,000'	218	594'	392,305
Greater Beardstown	4,000'	104	465'	359,181
Ingersoll (Canton)	3,899'	232	684'	883,807
Pinckneyville-Du Quoin	3,999'	157	400'	386,284
Dixon Municipal	3,897'	206	785'	950,676
Lake in the Hills	3,801'	72	887'	546,288
Schaumburg Regional	3,800'	120	801'	1,283,827
Vandalia Municipal	3,751'	246	537'	779,700
Bolingbrook Clow International	3,360'	205	675'	633,253

TABLE 15: LONGEST RUNWAY (CONTINUED)

Airport	Longest Runway	Acres	Elevation	Total Pavement ft ²
Monmouth Municipal	2,899'	105	753'	336,024
Joliet Regional	2,821'	178	582'	584,875
Havana Regional	2,235' (Turf)	160	488'	127,059
Total		66,786		152,013,460



 *Chicago Midway International Airport*

REFERENCES

- Abraham Lincoln Capital Airport (2023). Airlines. Retrieved from <https://www.flyspi.com/flights/airlines/>.
- Central Illinois Regional Airport (2023). Airlines. Retrieved from <https://cira.com/flights/airlines/>.
- Chicago Rockford International Airport (2023). Destinations. Retrieved from <https://flyrfd.com/destinations-list/>.
- Chicago Midway International Airport (2023). Airlines. Retrieved from <https://www.flychicago.com/midway/myflight/airlines/pages/default.aspx>.
- Chicago Midway International Airport (2023). Non-stop service. Retrieved from <https://www.flychicago.com/midway/myflight/non-stop/pages/default.aspx>.
- Chicago O'Hare International Airport (2023). Airlines. Retrieved from <https://www.flychicago.com/ohare/myflight/airlines/Pages/default.aspx>.
- Chicago O'Hare International Airport (2023). Non-stop service. Retrieved from <https://www.flychicago.com/ohare/myflight/non-stop/pages/default.aspx>.
- Decatur Airport (2023). Fly Decatur. Retrieved from <https://fly-decatur.com/airport/fly-decatur/>.
- Federal Aviation Administration (2022). Airport data and information portal. Retrieved from <https://adip.faa.gov/agis/public/#/public>.
- Federal Aviation Administration (2022). Passenger boarding (enplanement) and all cargo data for U.S. airports. Retrieved from https://www.faa.gov/airports/planning_capacity/passenger_allcargo_stats/passenger.
- Federal Aviation Administration (2022). Surface weather observation stations. Retrieved from https://www.faa.gov/air_traffic/weather/asos/?state=IL.
- General Wayne A. Downing Peoria International Airport (2023). Airlines. Retrieved from <https://www.flypia.com/airlines/>.
- Illinois Department of Transportation (2022). Aviation System Plan. Retrieved from <https://www.ilaviation.com/>.
- Illinois Department of Transportation (2022). 2020-2022 Pavement Management System Update. Retrieved from <https://idea.appliedpavement.com/hosting/illinois/>.
- MidAmerica St. Louis Airport (2023). Destinations. Retrieved from <https://flymidamerica.com/>.
- Quad Cities International Airport (2023). Airlines and destinations. Retrieved from <https://www.qcairport.com/flights-airlines/airlines-destinations/>.
- Quincy Regional Airport (2023). Flying Cape Air. Retrieved from <https://www.quincyl.gov/explore/quincy-transportation/quincy-regional-airport>.
- University of Illinois – Willard Airport (2023). Flight tracker. Retrieved from <https://iflycu.com/info/flighttrackingmenu/>.
- Veteran's Airport of Southern Illinois (2023). Book a flight. Retrieved from <https://veteransairport.com/airlines-flights/book-flight/>.

CONTACT INFORMATION

QUESTIONS? PLEASE CONTACT:

BJ Murray

Section Chief, Aviation & Marine Transportation Program Planning

Office of Planning & Programming

Office Phone: (217) 782-4118

Email: BJ.Murray@Illinois.gov

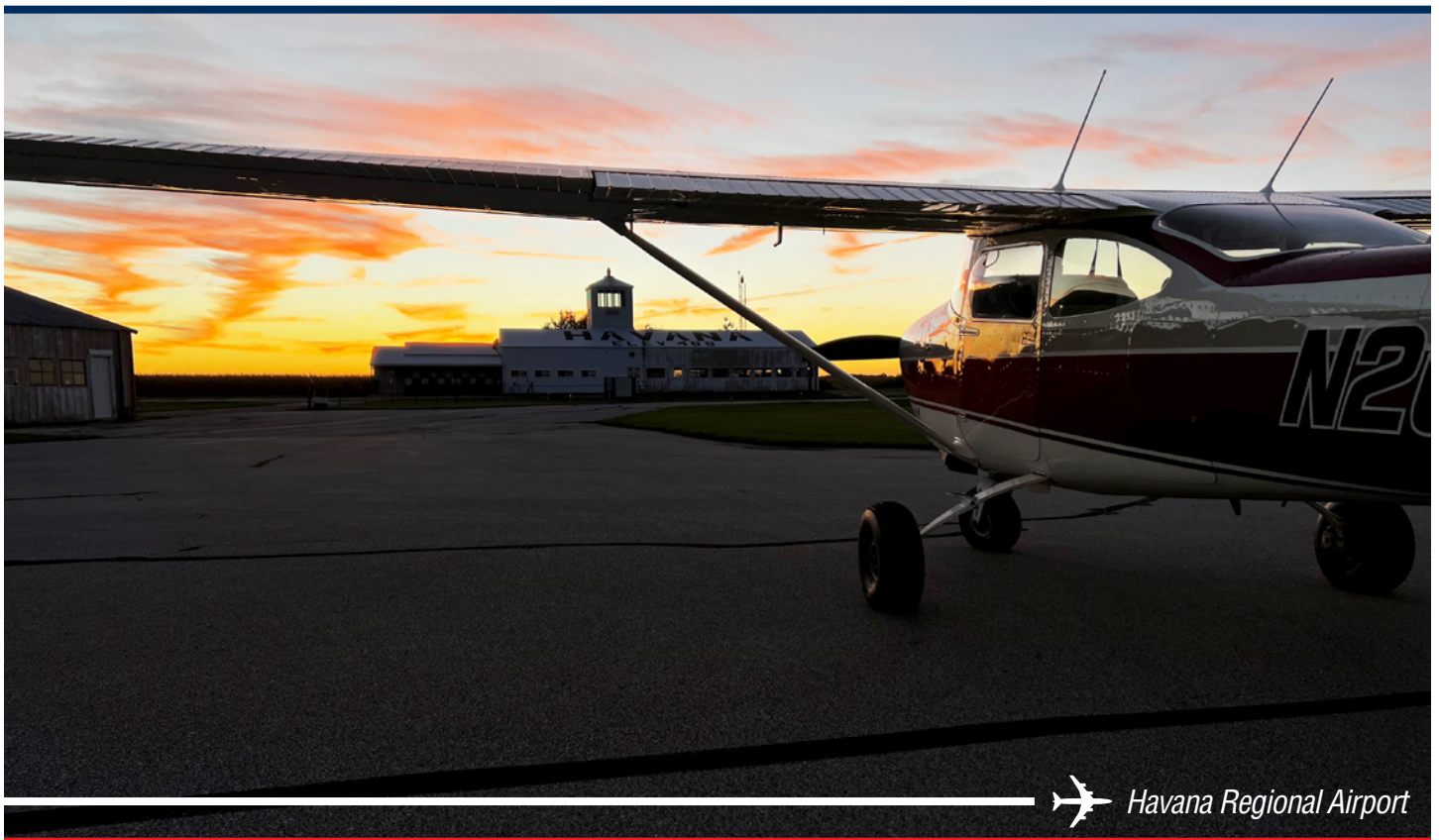
Todd Dugan, MPA MSTT

Aviation Annual Program Planning Specialist

Office of Planning & Programming

Office Phone: (217) 524-3517

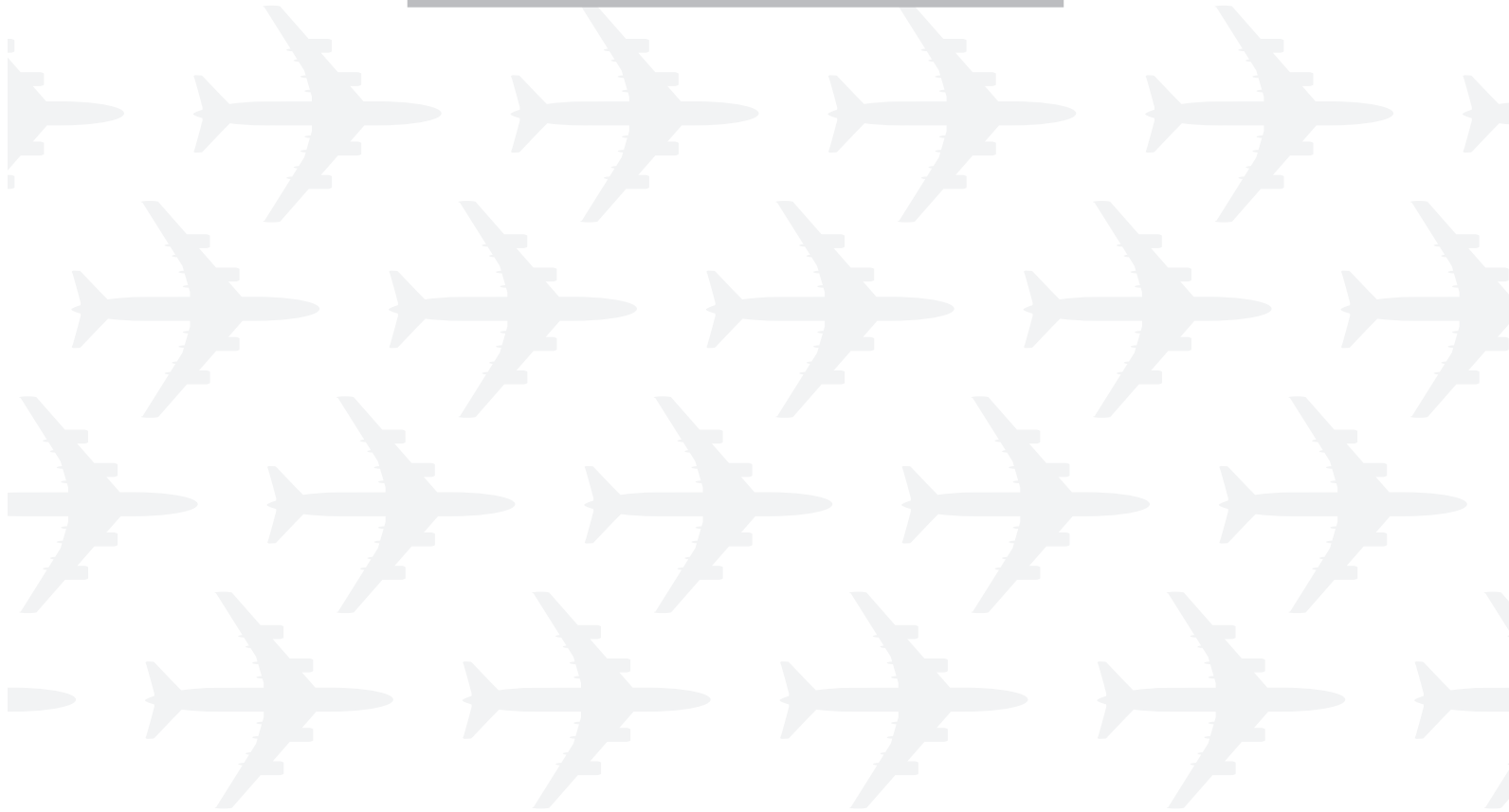
Email: Todd.Dugan@Illinois.gov



 Havana Regional Airport

2023

**ILLINOIS PUBLIC
USE AND PUBLICLY
OWNED AIRPORT
INVENTORY REPORT**



Illinois Department
of Transportation