

Aledo – Genesis Medical Center

12IS

NAV

Lat: N 41° 12.4'
Long: W 90° 45.6'

COMM

Freq: 155.340
PL: 229.1 W:60
Ph: 309-582-5301

LZ INFO

Elev:
729' Surface
Lighting:
Flood
Beacon:
Yes
Wind Sock:
Yes – Lighted

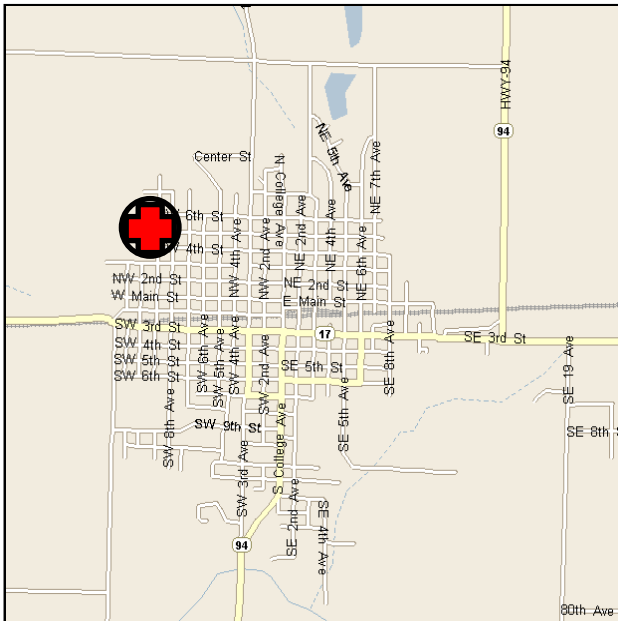
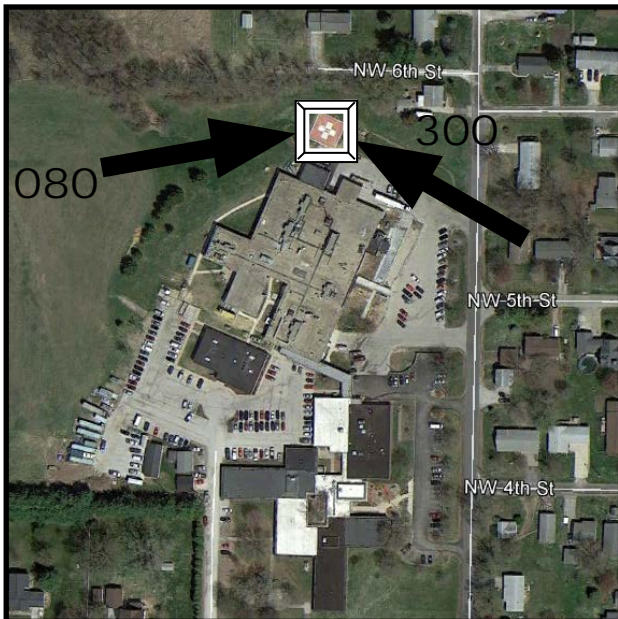
FACILITY

Genesis Medical Center
409 NW 9th Avenue
Aledo, IL 61231

TLOF: 50' X 50'

SPECIAL NOTES:

New Photo



Amended: 2015-10-07

PAGE 1

Alton – Alton Memorial Hospital

11L3

NAV

Lat: N 38° 53.9'

Long: W 90° 09.6'

COMM

Freq: 155.340

PL: 151.4 W:28

Ph: 618-463-7311

LZ INFO

Elev:

525' Surface

Lighting:

Perimeter

Beacon:

Yes

Wind Sock:

Yes – Lighted

FACILITY

Alton Memorial Hospital

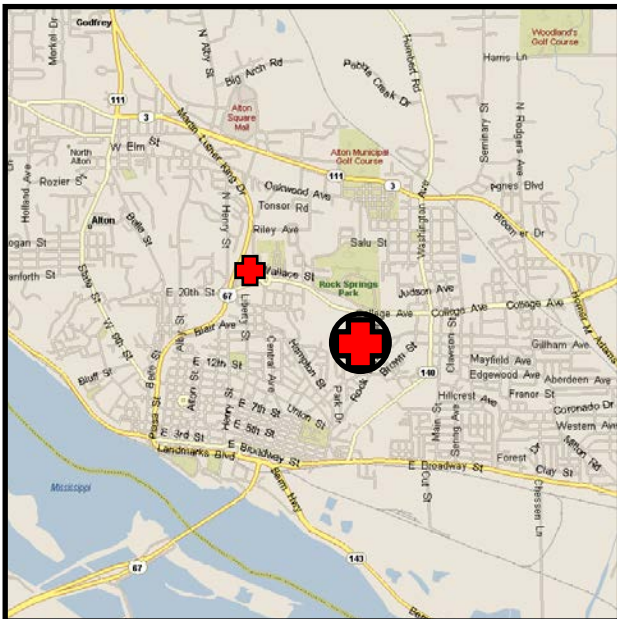
One Memorial Drive

Alton, IL 62002

TLOF: 50' X 50'

SPECIAL NOTES:

New Photo



Amended: 2012-05-18

PAGE 2

Alton – Alton Memorial Hospital

11L3

Alton – OSF St. Anthony's Health Center

Ø3IS

NAV

Lat: N 38° 54.5'

Long: W 90° 10.5'

COMM

Freq: 155.340

PL: 173.8 W: 34

Ph: 618-465-2571

LZ INFO

Elev:

580' Surface

Lighting:

Perimeter

Beacon:

Yes

Wind Sock:

Yes – Lighted

FACILITY

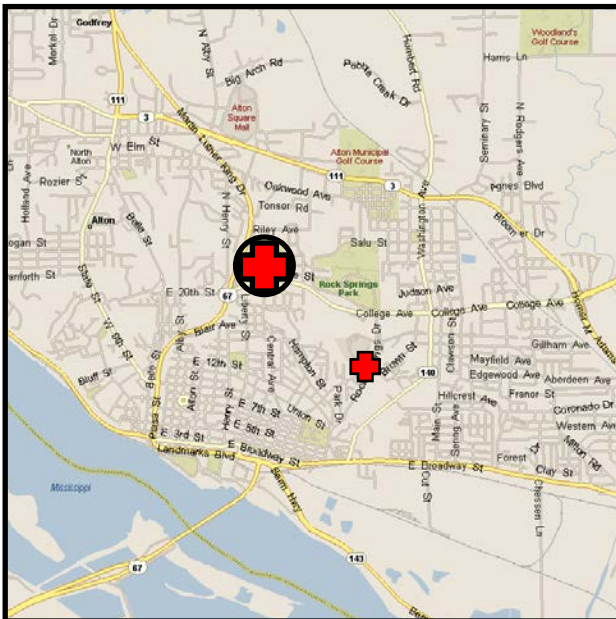
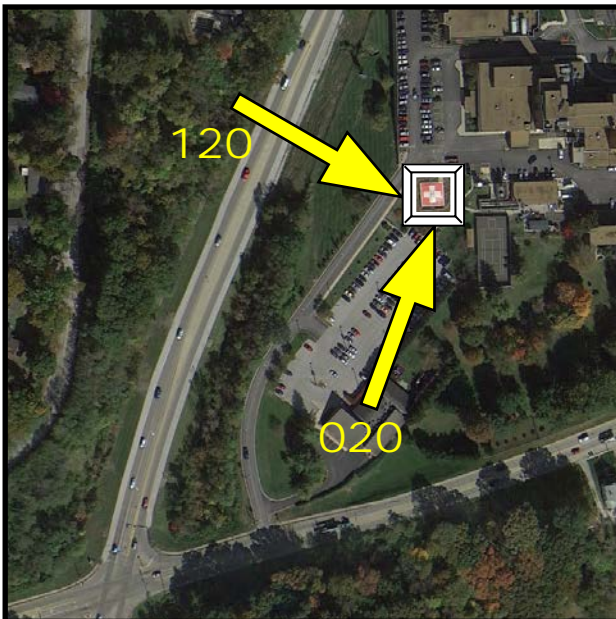
OSF St. Anthony's Health Center

St. Anthony's Way
Alton, IL 62202

TLOF: 40' X 40'

SPECIAL NOTES:

Name Change



Amended: 2015-10-16

PAGE 3

Anna – Union County Hospital

4ISØ

NAV

Lat: N 37° 27.84'
Long: W 89° 14.80'

COMM

Freq: 155.340
PL: 136.5 **W:** 25
Ph: 618-833-4511

LZ INFO

Elev:
624' Surface
Lighting:
Perimeter
Beacon:
Yes
Wind Sock:
Yes – Lighted

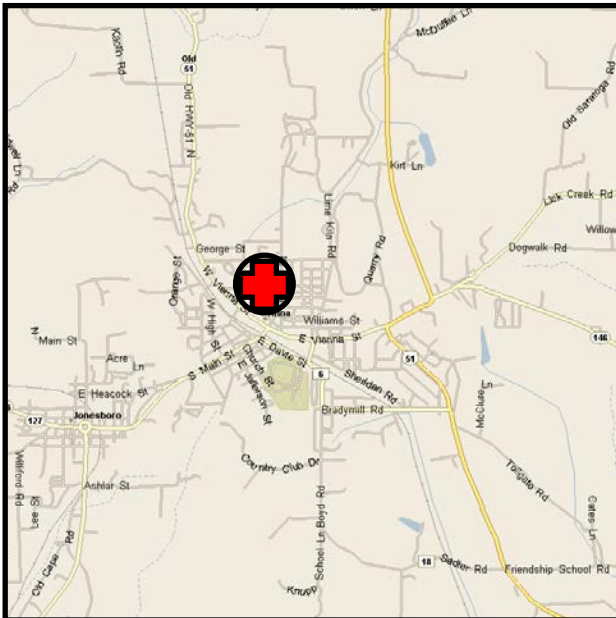
FACILITY

Union County Hospital
517 North Main
Anna, IL 62906

TLOF: 40' X 40'

SPECIAL NOTES:

Correct Lat/Long



Amended: 2018-08-06

PAGE 4

Arlington Heights – Northwest Community Hospital 7IL4

NAV

Lat: N 42° 04.1'
Long: W 87° 59.6'

COMM

Freq: 155.400
PL: 94.8 **W:**12
Ph: 847-618-7596

LZ INFO

Elev:
758' Parking Deck
Lighting:
Perimeter, Flood
Beacon:
Yes
Wind Sock:
Yes – Lighted

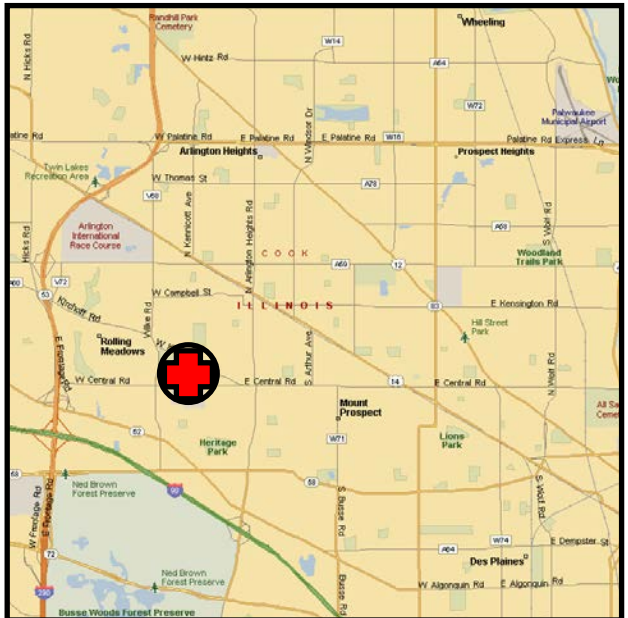
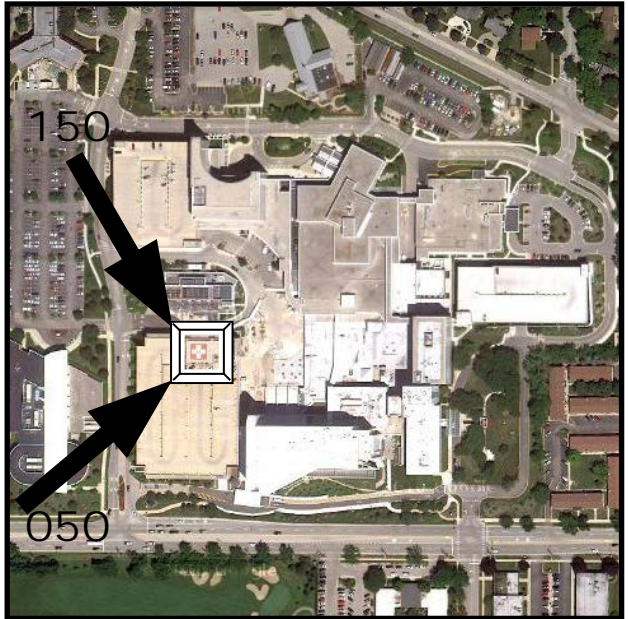
FACILITY

Northwest Community
Hospital
800 W. Central Road
Arlington Heights, IL 60005

TLOF: 50' x 60'

SPECIAL NOTES:

New phone number



Amended: 2018-04-10

PAGE 5

Aurora – Presence Mercy Medical Center

IL21

NAV

Lat: N 41° 47.1'

Long: W 88° 19.4'

COMM

Freq: 155.340

PL: 107.2 W:16

Ph: 630-859-2222

LZ INFO

Elev:

710' Surface

Lighting:

Flood

Beacon:

Yes

Wind Sock:

Yes – Lighted

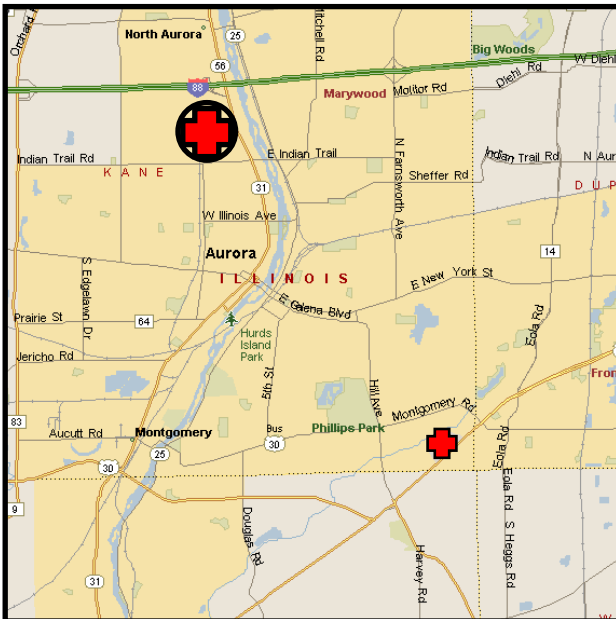
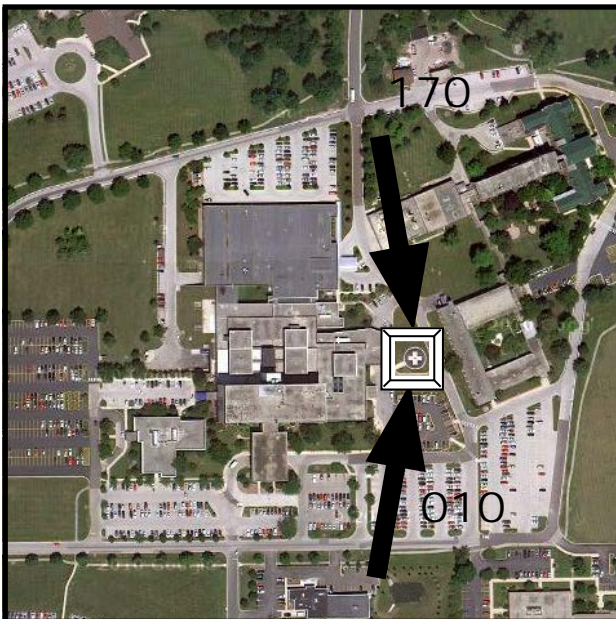
FACILITY

Presence Mercy Medical Center

1325 N. Highland
Aurora, IL 60506

TLOF: 50' x 50'

SPECIAL NOTES:



Amended: 2018-08-06

PAGE 6

Aurora – Rush-Copley Medical Center

7IS8

NAV

Lat: N 41° 43.71'
Long: W 88° 16.30'

COMM

Freq: 155.340
PL: 186.2 **W:**36
Ph: 630-978-6200

LZ INFO

Elev:
625' Surface
Lighting:
Perimeter
Beacon:
Yes
Wind Sock:
Yes – Lighted

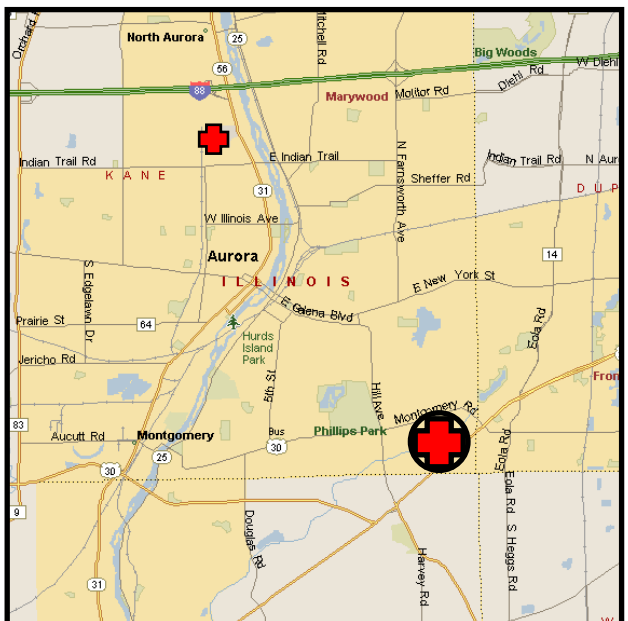
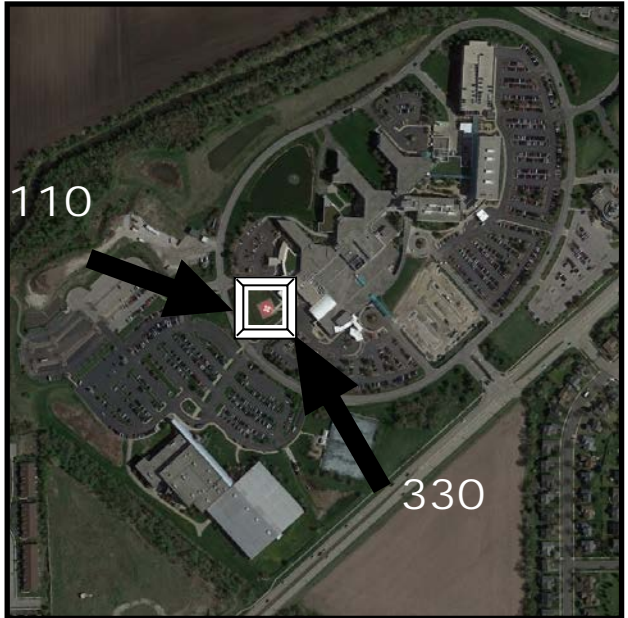
FACILITY

Rush-Copley Medical Center
2000 Ogden Ave.
Aurora, IL 60504

TLOF: 50' X 50'

SPECIAL NOTES:

New Photo, helipad moved
100 feet west



Amended: 2015-10-16

PAGE 7

NAV

Lat: N 42° 11.7'
Long: W 88° 10.2'

COMM

Freq: 155.340
PL: 100.0 **W:**14
Ph: 847-381-9600

LZ INFO

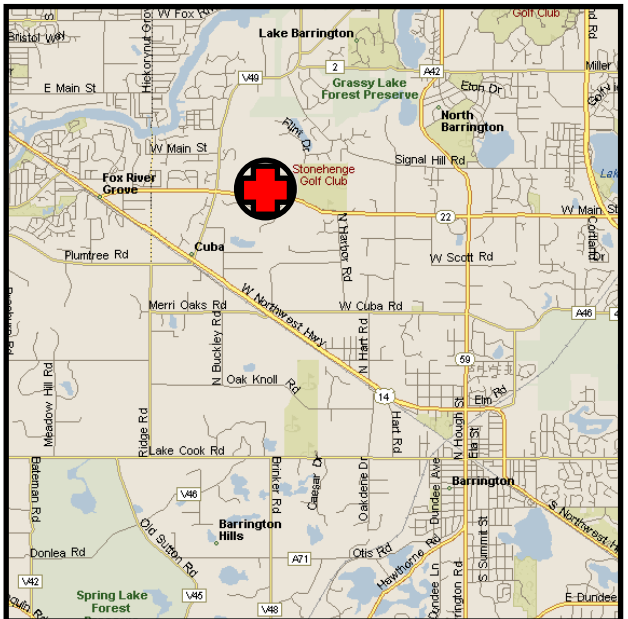
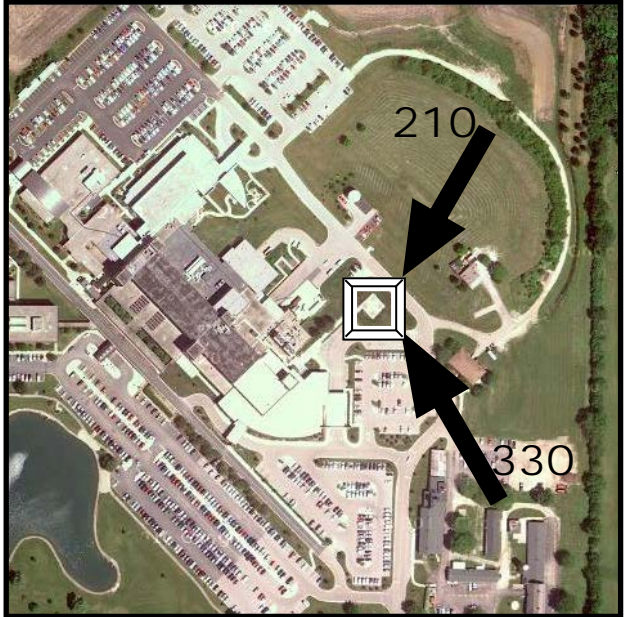
Elev:
793' Surface
Lighting:
Perimeter, Flood
Beacon:
Yes
Wind Sock:
Yes – Lighted

FACILITY

Advocate Good Shepherd
Hospital
450 W. Highway 22
Barrington, IL 60010

SPECIAL NOTES:

New Photo



Amended: 2012-02-20

PAGE 8

Belleville – Memorial Hospital

6ØLL

NAV

Lat: N 38° 33.1'
Long: W 90° 01.3'

COMM

Freq: 155.160
PL: 203.5 W:38
Ph: 618-233-7750

LZ INFO

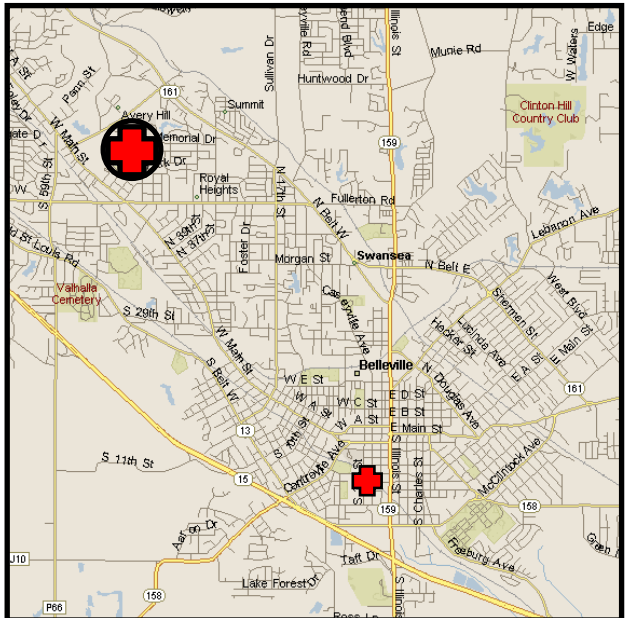
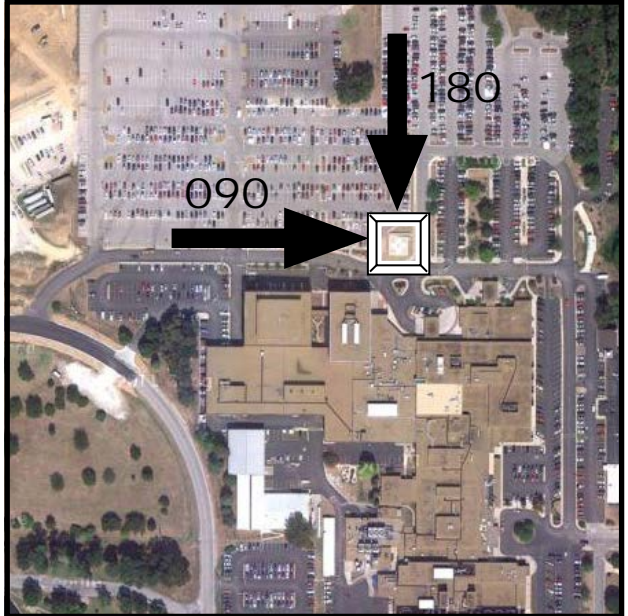
Elev:
584' Surface
Lighting:
Perimeter
Beacon:
Yes
Wind Sock:
Yes – Lighted

FACILITY

Memorial Hospital
4500 Memorial Dr.
Belleville, IL 62223

TLOF: 42' X 42'

SPECIAL NOTES:



Amended: 2012-02-20

PAGE 9

Belleville – St. Elizabeth’s Hospital

IL73

NAV

Lat: N 38° 30.6’
Long: W 89° 59.3’

COMM

Freq: 155.160
PL: 146.2 W:27
Ph: 618-234-2120

LZ INFO

Elev:
561’ Parking Deck
Lighting:
Perimeter, Flood
Beacon:
Yes
Wind Sock:
Yes – Lighted

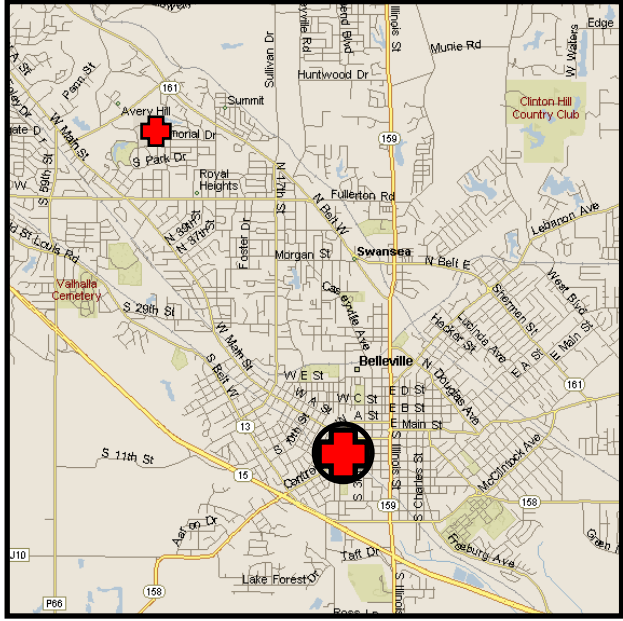
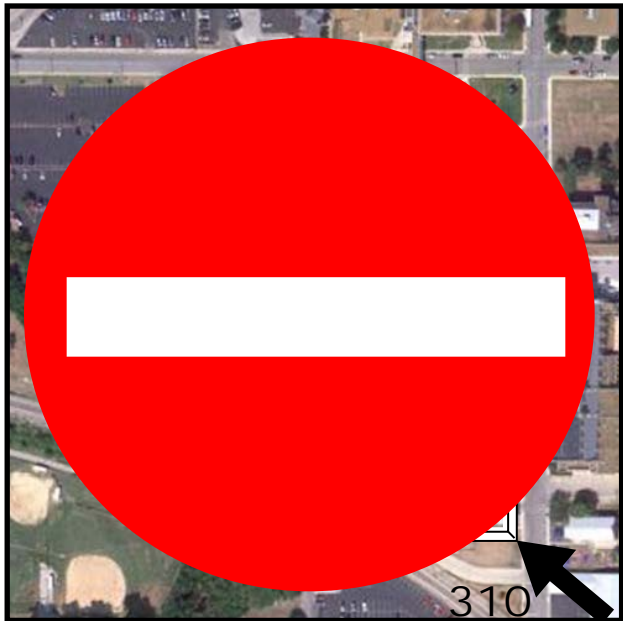
FACILITY

St. Elizabeth’s Hospital
211 S. 3rd Street
Belleville, IL 62222

TLOF: 42’ X 42’

SPECIAL NOTES:

CLOSED
New hospital at
O’Fallon



Amended: 2018-08-06

PAGE 10

Benton – Franklin Hospital

53IS

NAV

Lat: N 38° 00.6'
Long: W 88° 55.1'

COMM

Freq: 155.340
PL: 103.5 W:15
Ph: 618-439-3161

LZ INFO

Elev:
445' Surface
Lighting:
Perimeter
Beacon:
No
Wind Sock:
Yes – Lighted

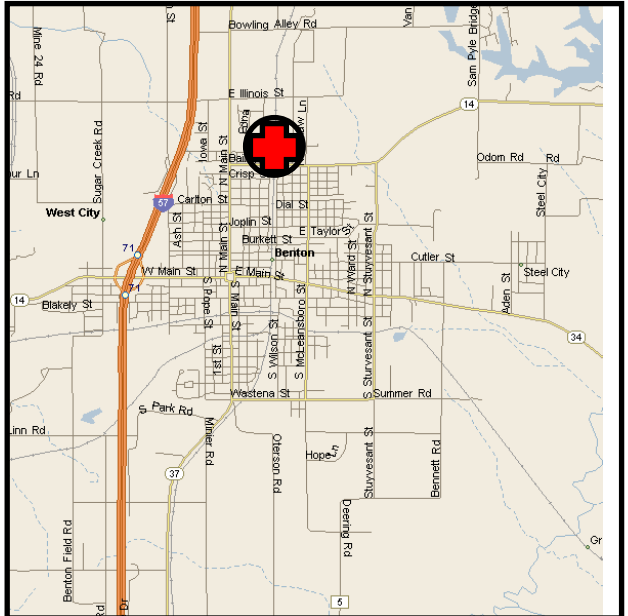
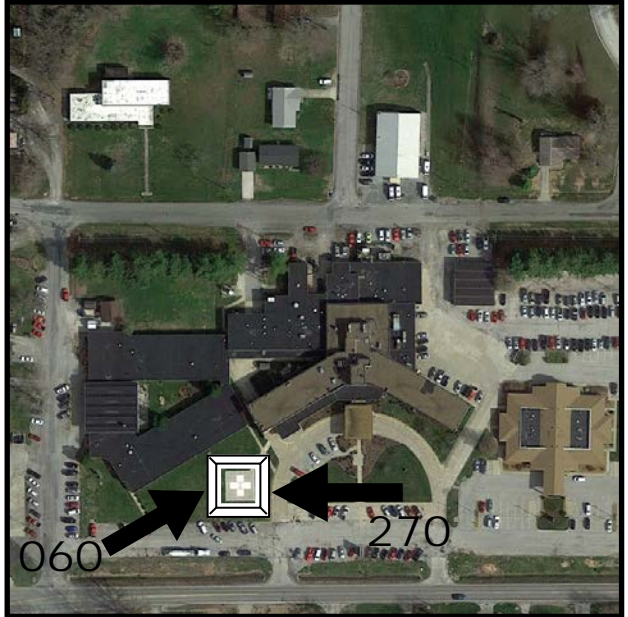
FACILITY

Franklin Hospital
201 Bailey Ln.
Benton, IL 62812

TLOF: 40' X 40'

SPECIAL NOTES:

New Photo



Amended: 2015-10-16

PAGE 11

NAV

Lat: N 40° 28.9'
Long: W 88° 57.4'

COMM

Freq: 155.340
PL: 94.8 **W:**12
Ph: 309-662-3311

LZ INFO

Elev:
855' Surface
Lighting:
Perimeter, Flood
Beacon:
Yes
Wind Sock:
Yes – Lighted

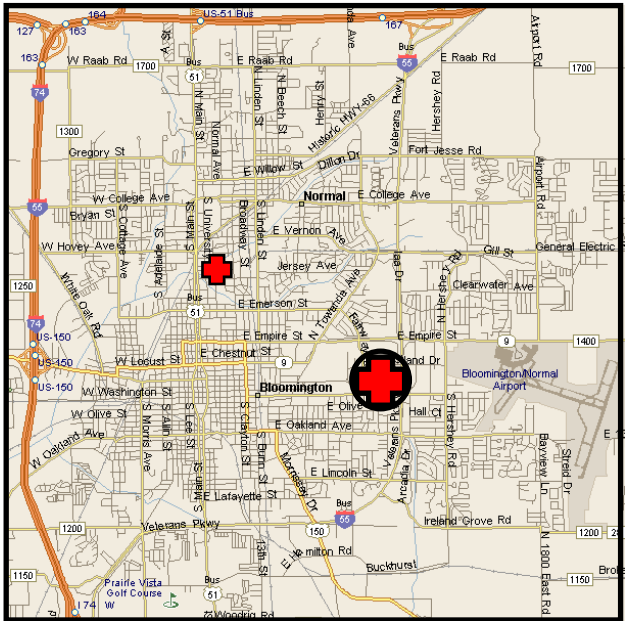
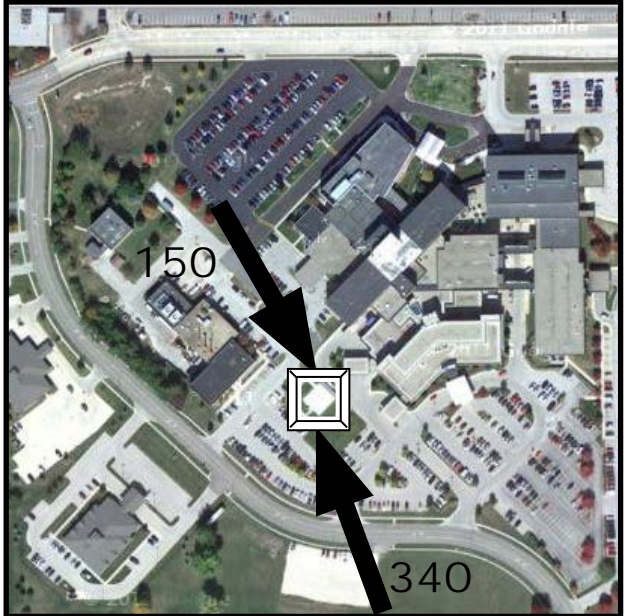
FACILITY

OSF St. Joseph Medical Center
2200 E. Washington St.
Bloomington, IL 61701

TLOF: 45' X 45'

SPECIAL NOTES:

Corrected Elevation



Bolingbrook–Adventist Bolingbrook Hospital 45IS

NAV

Lat: N 41° 40.9'
Long: W 88° 05.0'

COMM

Freq: 155.340
PL: 85.4 **W:**07
Ph: 630-312-5000

LZ INFO

Elev:
689' Surface
Lighting:
Perimeter
Beacon:
Yes
Wind Sock:
Yes – Lighted

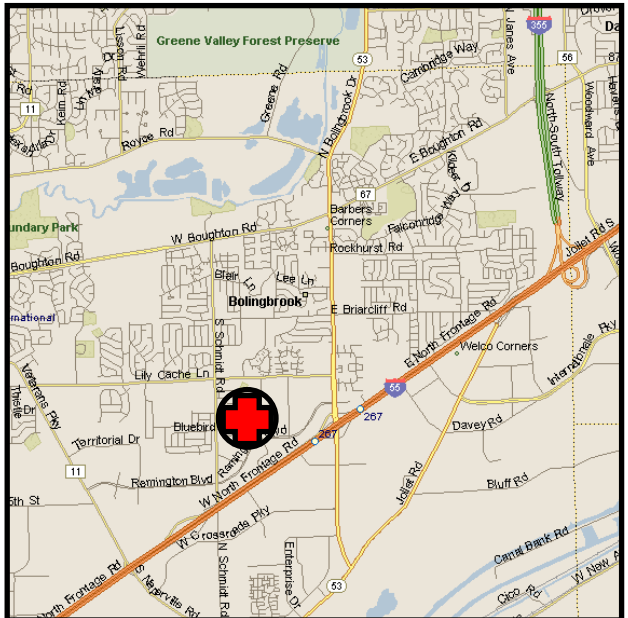
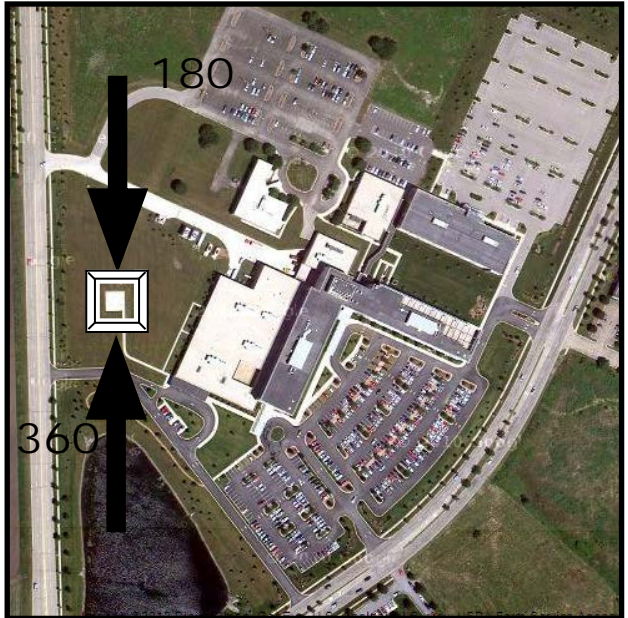
FACILITY

Adventist Bolingbrook
Hospital
500 Remington Blvd.
Bolingbrook, IL 60440

TLOF: 44' X 44'

SPECIAL NOTES:

New Photo



Amended: 2012-02-20

PAGE 13

NAV

Lat: N 38° 37.6'
Long: W 89° 31.4'

COMM

Freq: 155.340
PL: 97.4 W:13
Ph: 618-526-4511

LZ INFO

Elev:
478’ Surface
Lighting:
Flood
Beacon:
Yes
Wind Sock:
Yes – Lighted

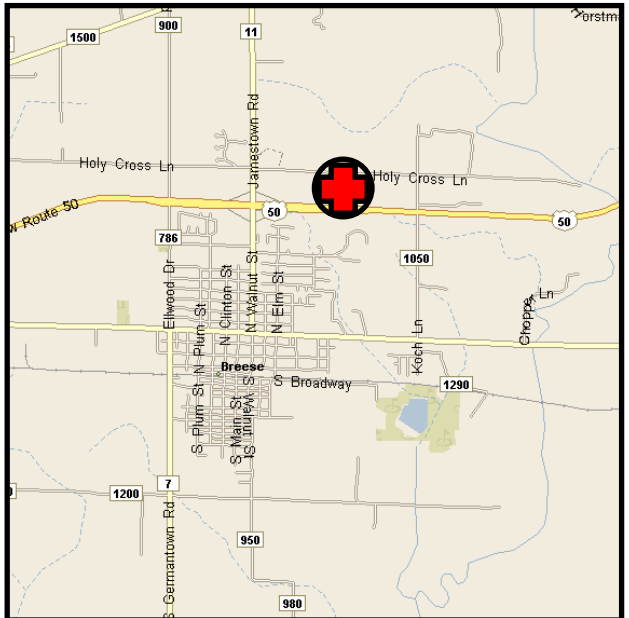
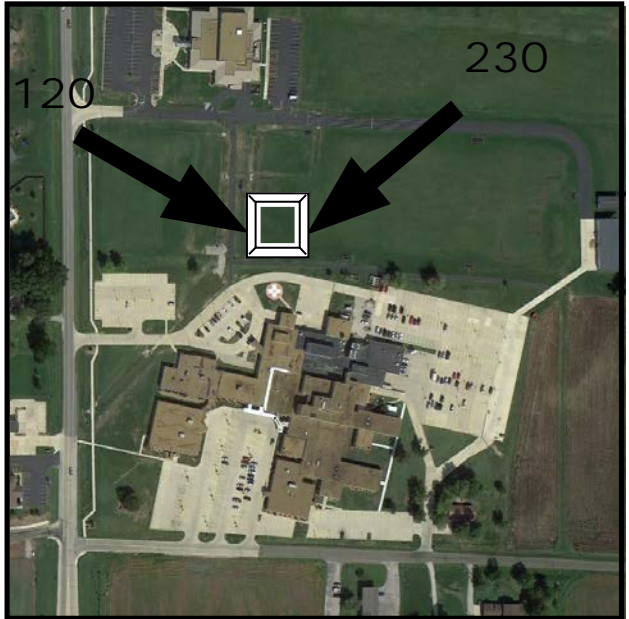
FACILITY

St. Joseph’s Hospital
9515 Holy Cross Lane
Breese, IL 62230

TLOF: 40’ X 40’

SPECIAL NOTES:

Helipad is approximately
100 feet north of current
depiction on Google Earth



Amended: 2018-04-10

PAGE 14

Canton – Graham Hospital

97IL

NAV

Lat: N 40° 33.30'
Long: W 90° 02.66'

COMM

Freq: 155.340
PL: 173.8 W:34
Ph: 309-647-5240

LZ INFO

Elev:
680' Roof
Lighting:
Perimeter *****
Beacon:
Yes - NSTD
Wind Sock:
Yes – Lighted

FACILITY

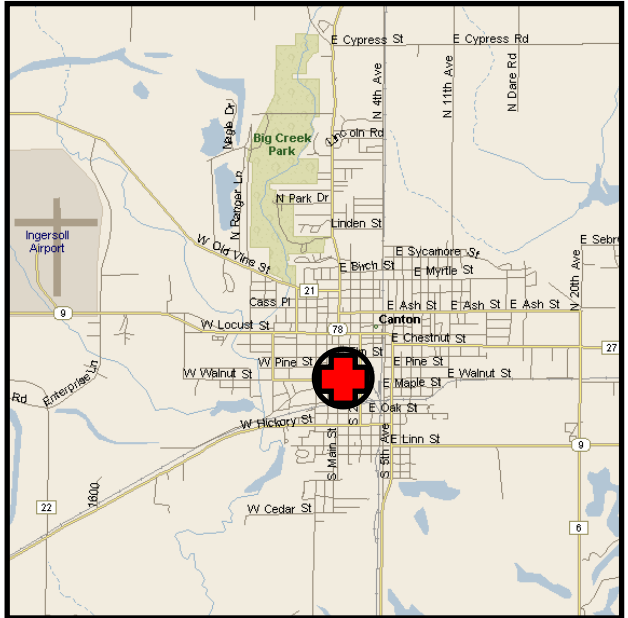
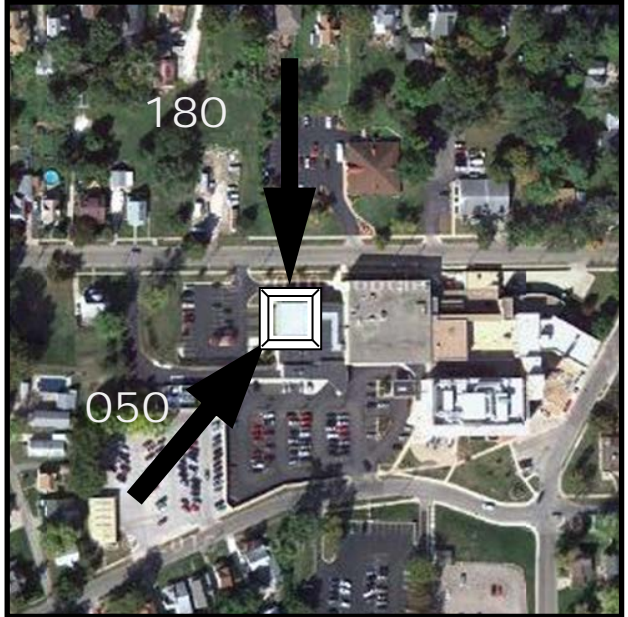
Graham Hospital
210 W. Walnut Street
Canton, IL 61520

TLOF: 50' X 50'

SPECIAL NOTES:

***** LIGHTING PILOT
CONTROLLED
123.025 (x7 clicks)

Beacon is nstd – does
not rotate



Amended: 2015-10-16

PAGE 15

Carbondale – Memorial Hospital

5IS1

NAV

Lat: N 37° 43.7'
Long: W 89° 13.2'

COMM

Freq: 155.340
PL: 114.8 W:18
Ph: 618-549-0721

LZ INFO

Elev:
500' Roof
Lighting:
Perimeter
Beacon:
Yes
Wind Sock:
Yes – Lighted

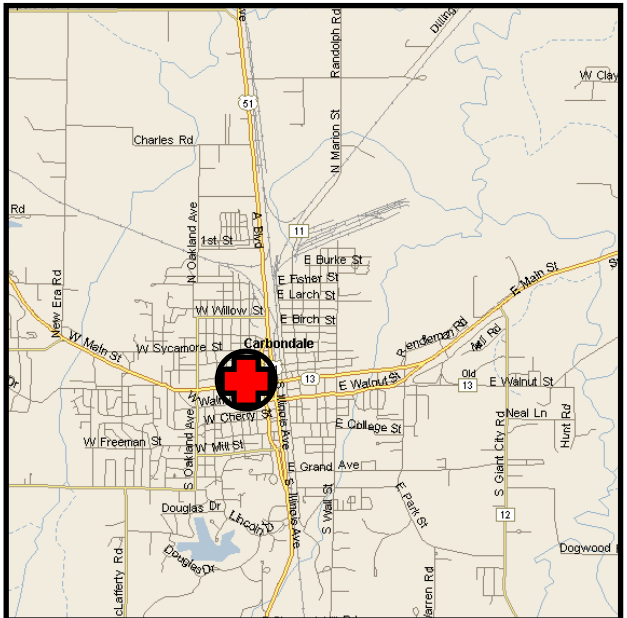
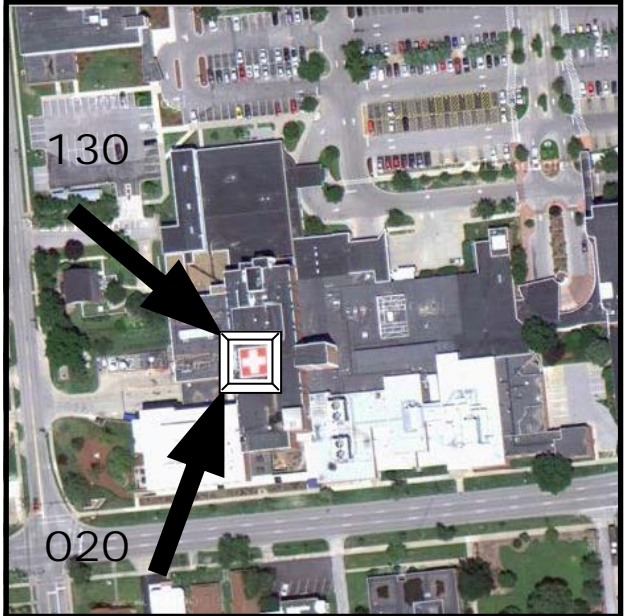
FACILITY

Memorial Hospital of
Carbondale
404 W. Jackson Street
Carbondale, IL 62902

TLOF: 35' X 35'

SPECIAL NOTES:

New Photo



Amended: 2012-02-20

PAGE 16

Carlinville – Carlinville Area Hospital

44LL

NAV

Lat: N 39° 18.0'
Long: W 89° 53.0'

COMM

Freq: 155.340
PL: 107.2 W:16
Ph: 217-854-3141

LZ INFO

Elev:
628' Surface
Lighting:
Perimeter
Beacon:
No
Wind Sock:
Yes – Lighted

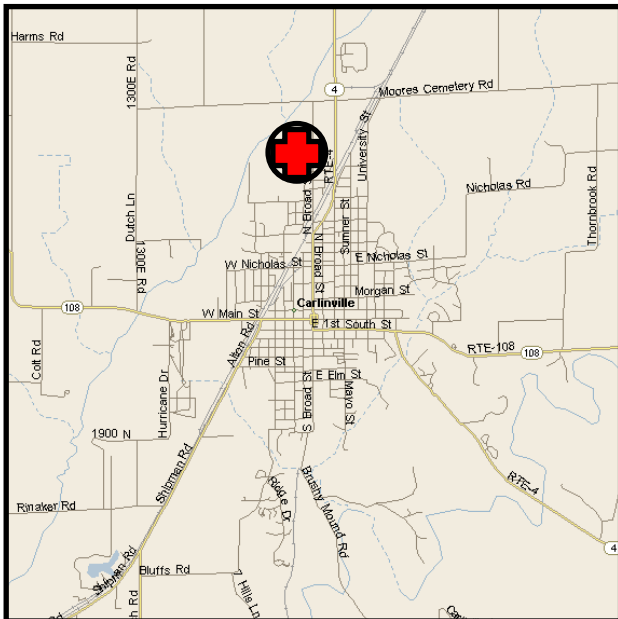
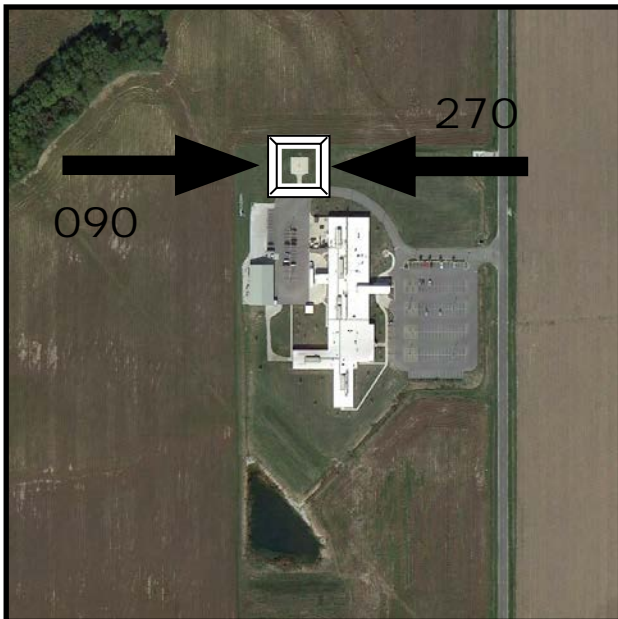
FACILITY

Carlinville Area Hospital
20733 N. Broad St.
Carlinville, IL 62626

TLOF: 46' X 46'

SPECIAL NOTES:

New Photo



Amended: 2016-12-15

PAGE 17

Carlinville – Carlinville Area Hospital

44LL

Carrollton – Boyd Memorial Hospital

5IS2

NAV

Lat: N 39° 17.8'

Long: W 90° 24.8'

COMM

Freq: 155.340

PL: 103.5 W:15

Ph: 217-942-6946

LZ INFO

Elev:

600' Surface

Lighting:

Perimeter

Beacon:

No

Wind Sock:

Yes

FACILITY

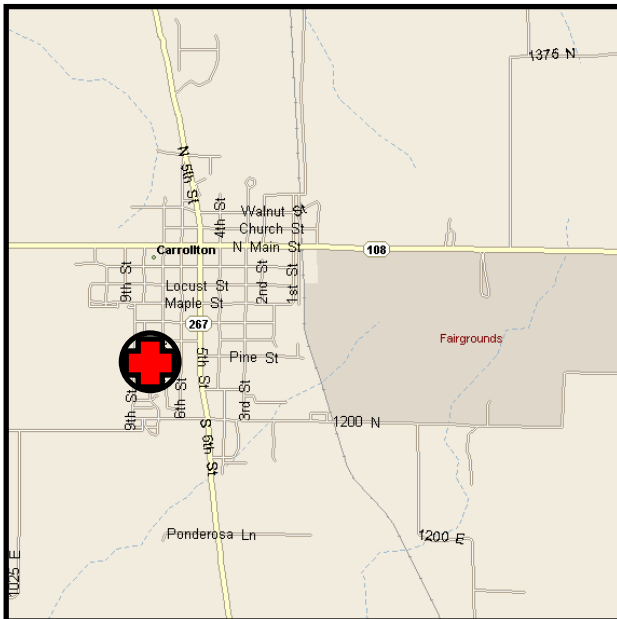
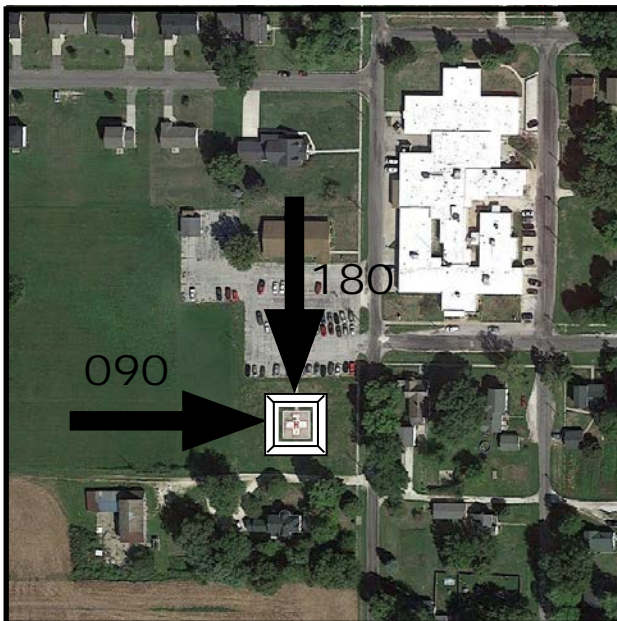
Boyd Memorial Hospital
800 School Street
Carrollton, IL 62016

TLOF: 40' X 40'

SPECIAL NOTES:

Air Evac Has parking pad
110 feet west of hospital
helipad.

Google Earth not updated
yet for new photo



Amended: 2018-08-06

PAGE 18

Centreville – Touchette Regional Hospital

LL59

NAV

Lat: N 38° 34.17'
Long: W 90° 06.57'

COMM

Freq: 155.340
PL: 114.8 **W:**18
Ph: 618-332-3060

LZ INFO

Elev:
416' Surface
Lighting:
Perimeter
Beacon:
Yes
Wind Sock:
Yes – Lighted

FACILITY

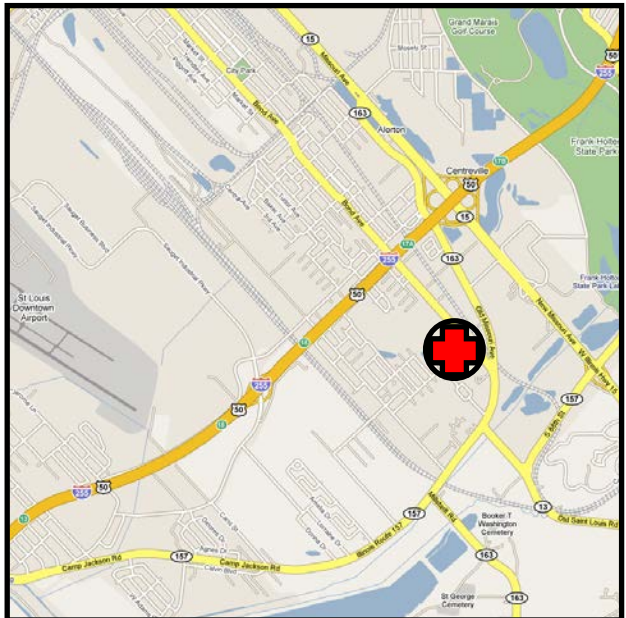
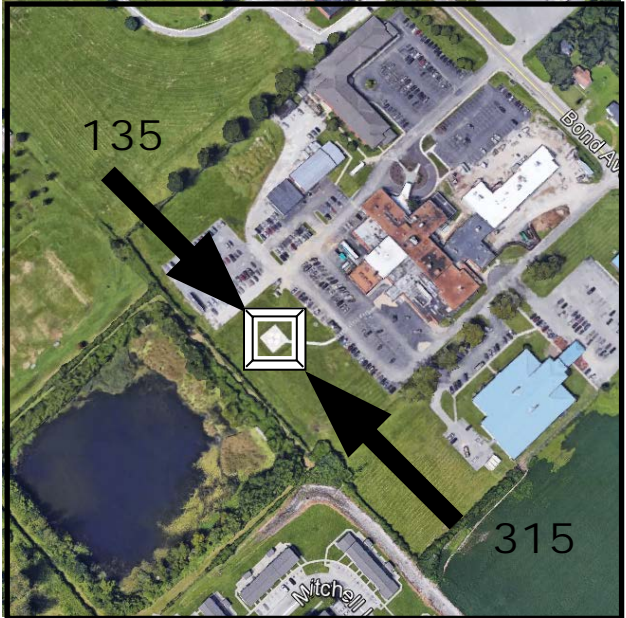
Touchette Regional Hosp.
5900 Bond Avenue
Centreville, IL 62207

TLOF: 44' X 44'

SPECIAL NOTES:

Unlit tower west of heliport.
Heliport is within CPS
Class D Airspace

New Photo



Amended: 2017-06-30

PAGE 21

Centreville – Touchette Regional Hospital

LL59

Chester – Memorial Hospital

4IS2

NAV

Lat: N 37° 55.0'
Long: W 89° 48.8'

COMM

Freq: 155.340
PL: 167.9 W:33
Ph: 618-826-4581

LZ INFO

Elev:
620' Surface
Lighting:
Flood
Beacon:
NSTD – Yellow Strobe
Wind Sock:
Yes - Lighted

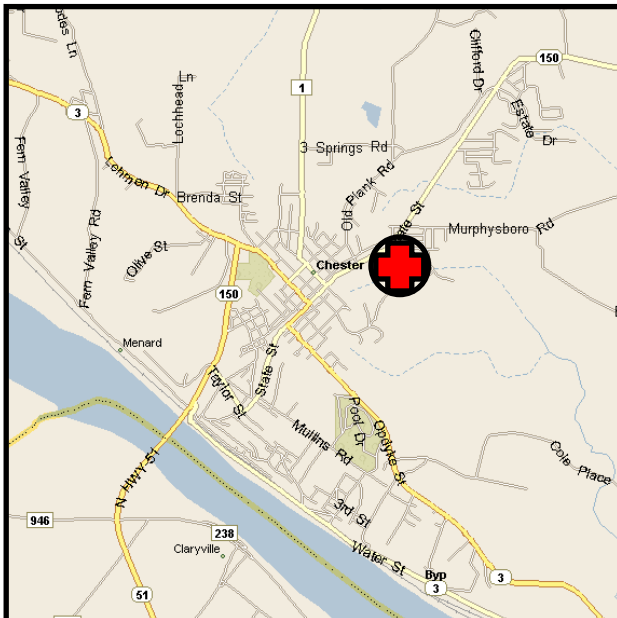
FACILITY

Memorial Hospital
1900 S. State Street
Chester, IL 62233

TLOF: 40' X 40'

SPECIAL NOTES:

New Photo



Amended: 2015-10-16

PAGE 22

Chicago – Ann & Robert Lurie Children’s Hospital 75IS

NAV

Lat: N 41° 53.8’
Long: W 87° 37.3’

COMM

Freq: 131.775
PL: W:
Ph: 312-227-3700

LZ INFO

Elev: 1020’ Roof
Lighting: Perimeter
Beacon: Yes
Wind Sock:
Yes-Lighted

On-site AWOS III: 128.350
AWOS Phone: 312-944-0928

FACILITY

Ann & Robert H. Lurie
Children’s Hospital of Chicago
225 E. Chicago Avenue
Chicago, IL 60611

TLOF: 66’ X 66’

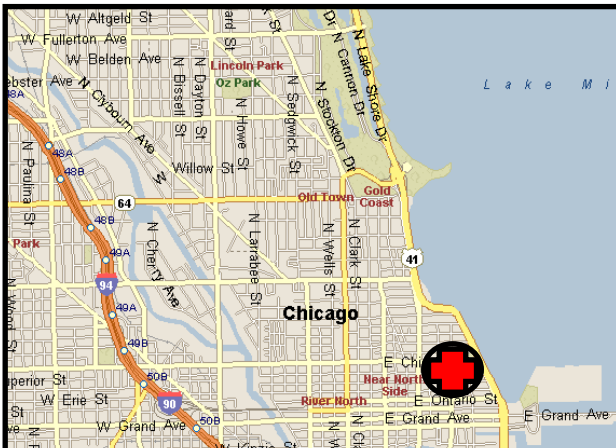
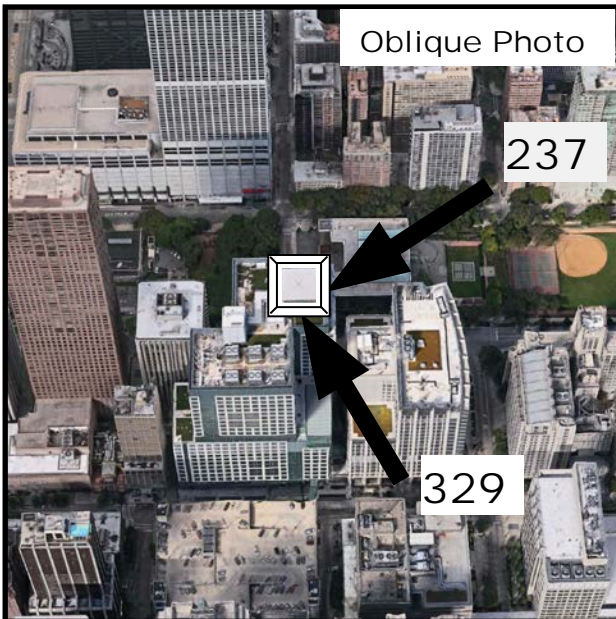
SPECIAL NOTES:

All helicopter patient arrivals
must be coordinated in
advance.
Contact: 800-540-4131

Wind Limitations:

Max onsite sustained: 25 kts
Max onsite gust spread 15 kts

New phone number



Pilot Requirement:

All pilots must complete the Lurie Heliport Orientation
program and a signed copy of the completion must be
on file with Lurie Children’s Hospital prior to any pilot
conducting operations at this facility

Amended: 2018-04-10

PAGE 23

Chicago – J.H. Stroger Hosp. of Cook County IL75

NAV

Lat: N 41° 52.48'

Long: W 87° 40.40'

COMM

Freq: 155.340

PL: 110.9 W:17

Ph: 312-864-6000

LZ INFO

Elev:

593' Surface

Lighting:

Perimeter

Beacon:

No

Wind Sock:

Yes – Lighted

FACILITY

John H. Stroger Hospital of
Cook County

1901 W. Harrison

Chicago, IL 60612

TLOF: 40' X 40'

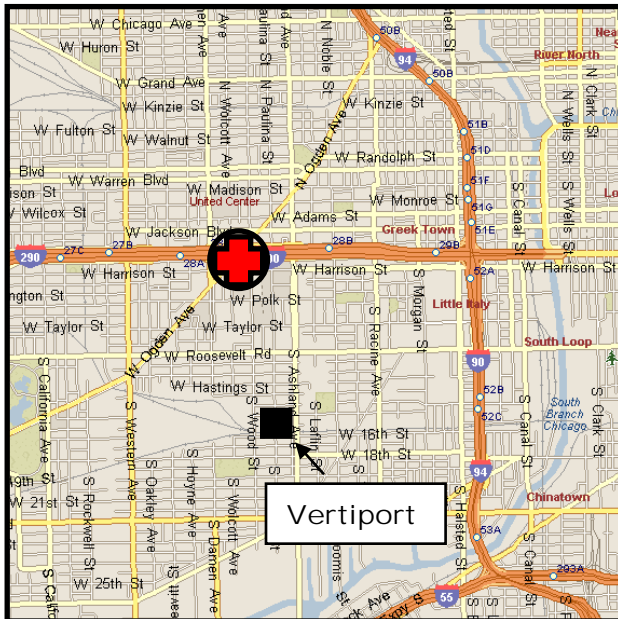
SPECIAL NOTES:

24 HR POLICE:

312-864-8097

Gate Access Key in Box
under Windsock

Vertiport Chicago



Amended: 2015-10-16

PAGE 24

Chicago – J.H. Stroger Hosp. of Cook County IL75

Chicago – Presence Resurrection Medical Ctr IL79

NAV

Lat: N 41° 59.2'

Long: W 87° 49.0'

COMM

Freq: 155.340

PL: 186.2 **W:**36

Ph: 773-774-8000

LZ INFO

Elev:

660' Surface

Lighting:

Perimeter

Beacon:

Yes

Wind Sock:

Yes – Lighted

FACILITY

Presence Resurrection

Medical Center

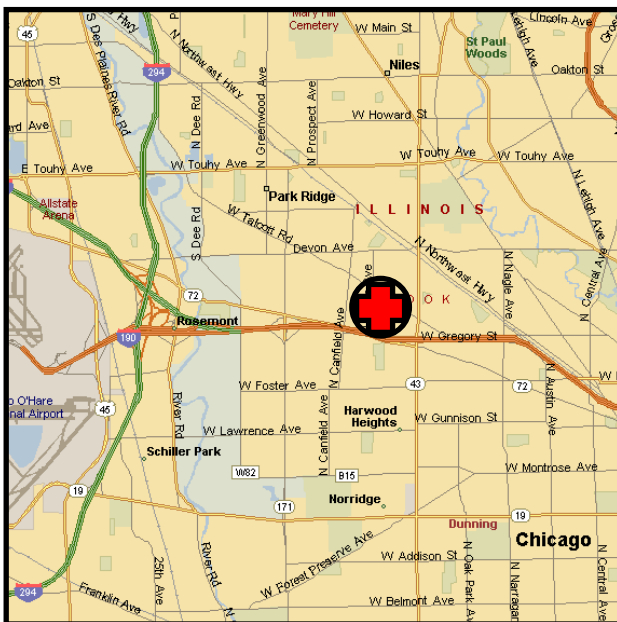
7435 West Talcott Road

Chicago, IL 60613

TLOF: 60' X 60'

SPECIAL NOTES:

New Name



Amended: 2016-10-05

PAGE 25

Chicago – Presence Sts. Mary & Elizabeth Medical Center 6IS7

NAV

Lat: N 41° 54.2'
Long: W 87° 41.0'

COMM

Freq: 155.340
PL: 162.2 W:32
Ph: 312-770-2000

LZ INFO

Elev:
640' Parking Deck
Lighting:
Perimeter
Beacon:
Yes
Wind Sock:
Yes – Lighted

FACILITY

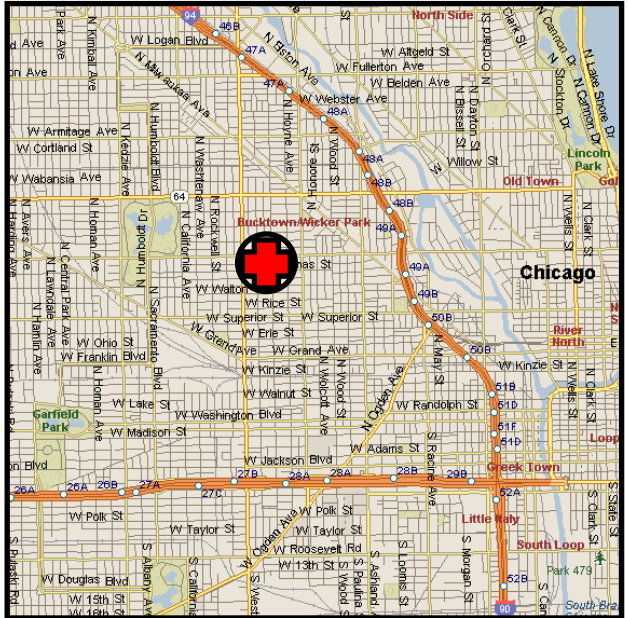
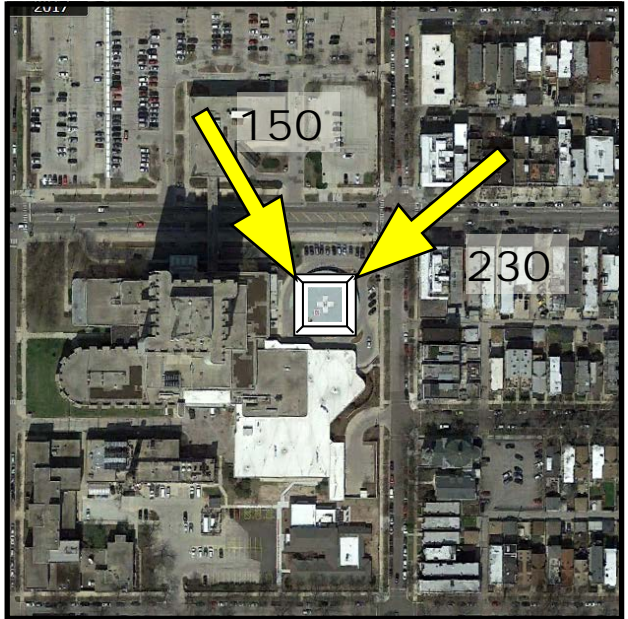
Presence Sts. Mary &
Elizabeth Medical Center
2233 W. Division Avenue
Chicago, IL 60622

TLOF: 84' x 84'

SPECIAL NOTES:

Heliport limited to patient
flights for this facility.

Name change, New photo



Amended: 2017-07-27

PAGE 26

NAV

Lat: N 41° 47.4'
Long: W 87° 36.2'

COMM

Freq: 155.340 ***
PL: 173.8 W:34
Ph: 773-702-3222

LZ INFO

Elev:
615' Roof
Lighting:
Perimeter, Flood
Beacon:
Yes
Wind Sock:
Yes – Lighted

FACILITY

Univ. of Chicago Hospitals
5841 S. Maryland
Chicago, IL 60637
Phone: 773-702-1000

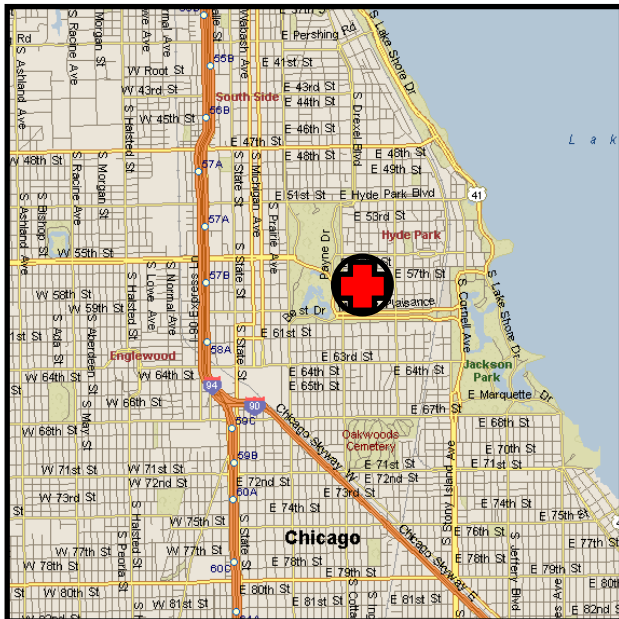
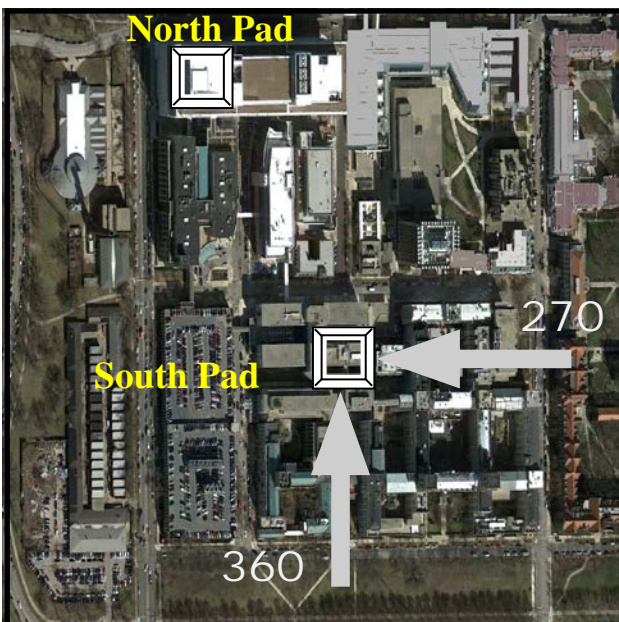
North Pad TLOF: 50' X 50'

South Pad TLOF: 30' X 40'

SPECIAL NOTES:

*** UCAN Cont: 129.475

Both pads to be used by
UCAN helicopter only.



Amended: 2013-02-23

PAGE 27

Chicago Heights – Franciscan St. James Health 9IS4

NAV

Lat: N 41° 30.3'
Long: W 87° 38.4'

COMM

Freq: 155.340
PL: 127.3 W:23
Ph: 708-756-1000

LZ INFO

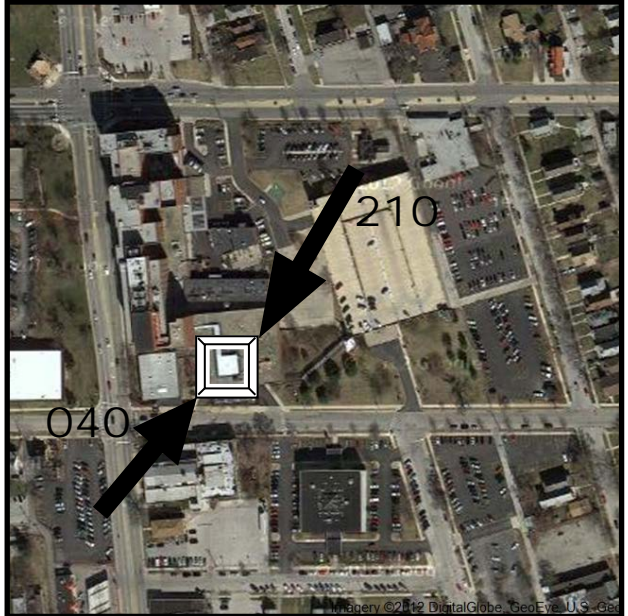
Elev:
694' Roof
Lighting:
Perimeter
Beacon:
Yes
Wind Sock:
Yes – Lighted

FACILITY

Franciscan St. James
Health
1423 Chicago Rd.
Chicago Heights, IL 60411

SPECIAL NOTES:

Name Change



Amended: 2014-04-24

PAGE 28

Chicago Heights – Franciscan St. James Health 9IS4

Danville – VA Illiana Health Care System

191L

NAV

Lat: N 40° 07.36'
Long: W 87° 35.29'

COMM

Freq:170.6R / 164.1T
Call Sign: VAPolice
Ph: 217-554-3000

LZ INFO

Elev:
630' Surface
Lighting:
Flood
Beacon:
No
Wind Sock:
Yes, Lighted

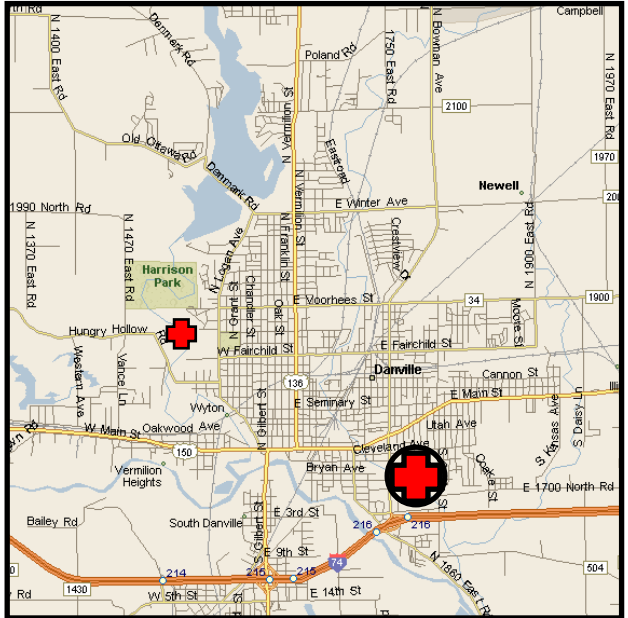
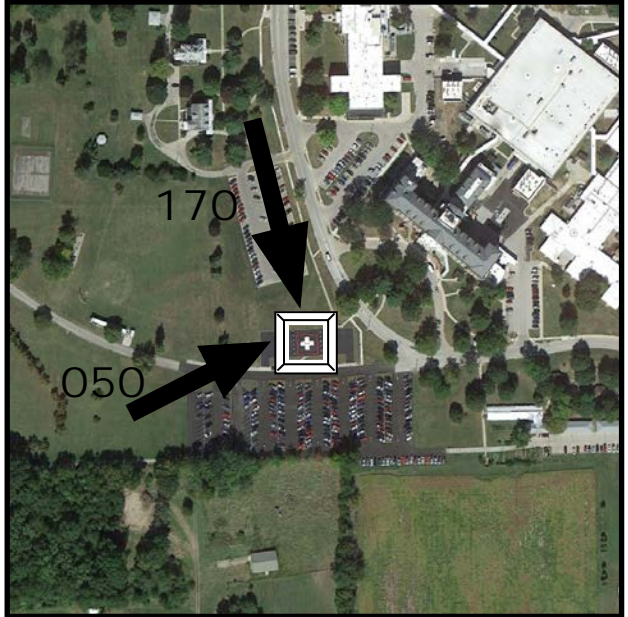
FACILITY

VA Illiana Health Care System
1900 East Main
Danville, IL 61832

TLOF: 44' X 44'

SPECIAL NOTES:

OSF Healthcare Sacred Heart Medical Center located to the NW.



Amended: 2018-05-23

PAGE 30

Decatur – Decatur Memorial Hospital

8IS6

NAV

Lat: N 39° 52.0'
Long: W 88° 57.7'

COMM

Freq: 155.340
PL: 151.4 W:28
Ph: 217-877-8121

LZ INFO

Elev:
713' Roof
Lighting:
Perimeter, Flood
Beacon:
Yes
Wind Sock:
Yes – Lighted

FACILITY

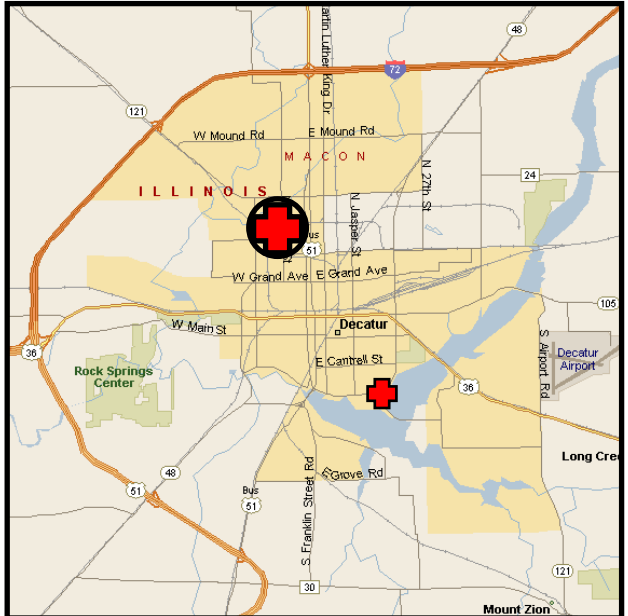
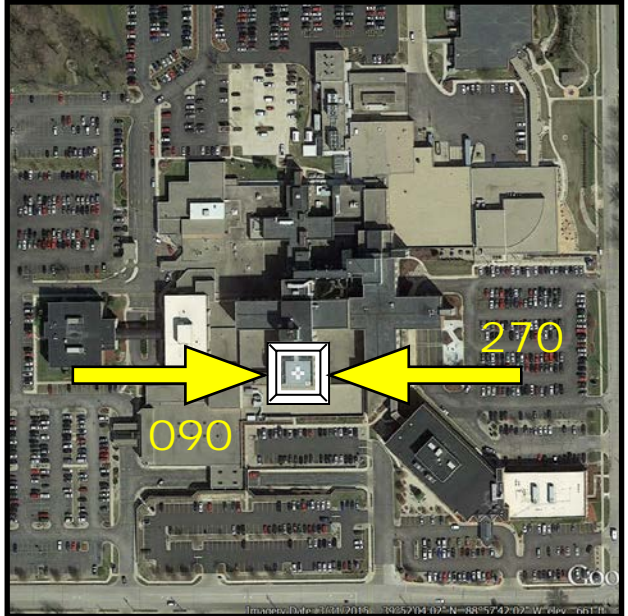
Decatur Memorial Hospital
2300 N. Edward St.
Decatur, IL 62526

TLOF: 45' X 45'

SPECIAL NOTES:

Note: St. Mary's Hospital to the SE.

New Photo



Amended: 2015-10-16

PAGE 31

Decatur – Decatur Memorial Hospital

8IS6

Decatur – St. Mary's Hospital

9IS3

NAV

Lat: N 39° 49.6'
Long: W 88° 55.9'

COMM

Freq: 155.340
PL: 151.4 W:28
Ph: 217-464-2966

LZ INFO

Elev: 658' Surface
Lighting: Lead-In / Flood
Beacon: Yes
Wind Sock: Yes – Lighted

FACILITY

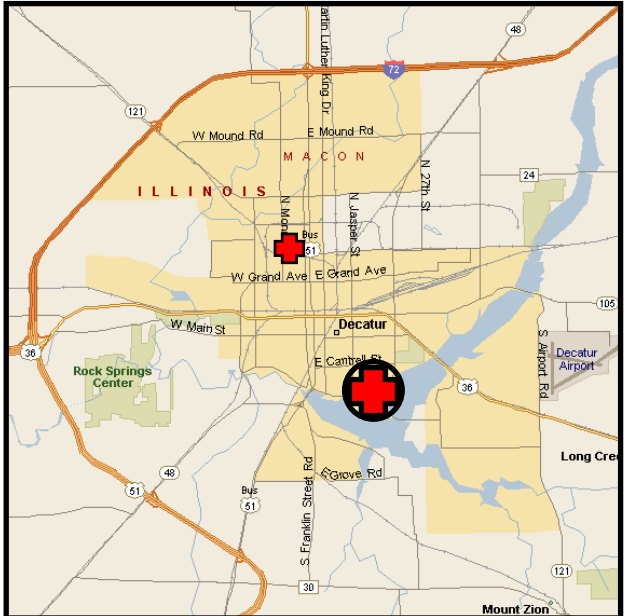
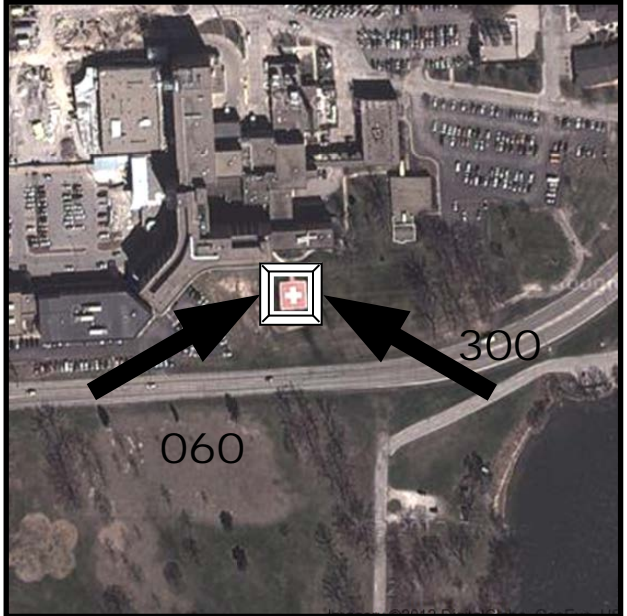
St. Mary's Hospital
1800 E. Lakeshore Drive
Decatur, IL 62521

TLOF: 48' X 48'

SPECIAL NOTES:

Note: Decatur Memorial Hospital to the NW

New Photo



Amended: 2012-05-29

PAGE 32

Decatur – St. Mary's Hospital

9IS3

DeKalb – Northwestern Medicine Kishwaukee Hosp OIL6

NAV

Lat: N 41° 57.64'
Long: W 88° 43.30'

COMM

Freq: 155.340
PL: 88.5 **W:**08
Ph: 815-756-1521

LZ INFO

Elev:
852' Surface
Lighting:
Perimeter, Flood
Beacon:
Yes - NSTD
Wind Sock:
Yes – Lighted

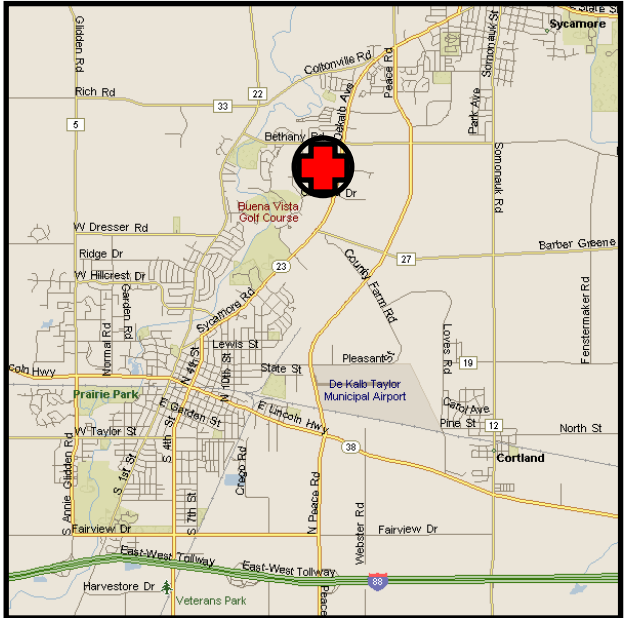
FACILITY

Northwestern Medicine
Kishwaukee Hospital
One Kish Hospital Drive
DeKalb, IL 60115

TLOF: 40' X 40'

SPECIAL NOTES:

Beacon is NSTD – does
not rotate



Amended: 2017-10-25

PAGE 33

Des Plaines – Presence Holy Family Med Ctr 6IS5

NAV

Lat: N 42° 03.3'
Long: W 87° 53.5'

COMM

Freq: 155.400
PL: 162.2 **W:**32
Ph: 847-297-1800

LZ INFO

Elev:
650' Surface
Lighting:
Perimeter
Beacon:
Yes
Wind Sock:
Yes – Lighted

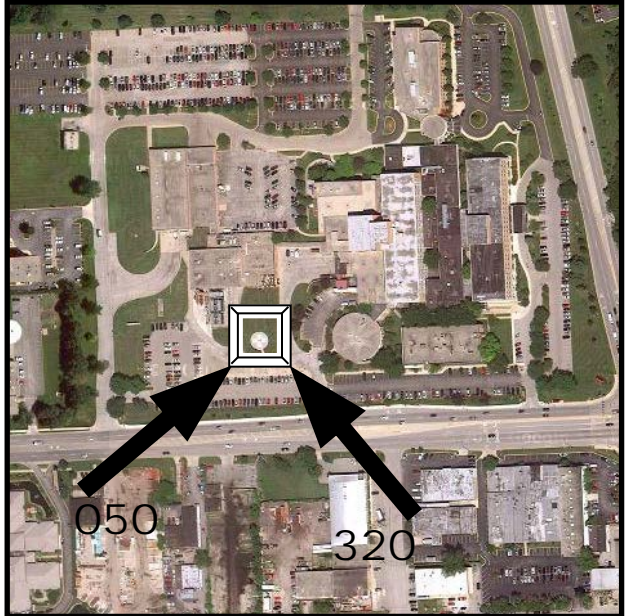
FACILITY

Presence Holy Family
Medical Center
100 N. River Rd.
Des Plaines, IL 60016

TLOF: 40' X 40'

SPECIAL NOTES:

Name Change



Amended: 2017-02-27

PAGE 34

Dixon – Katherine Shaw Bethea Hospital

49IS

NAV

Lat: N 41° 50.7'
Long: W 89° 28.8'

COMM

Freq: 155.340
PL: 151.4 **W:**28
Ph: 815-288-5531

LZ INFO

Elev:
703' Roof
Lighting:
Perimeter
Beacon:
Yes
Wind Sock:
Yes – Lighted

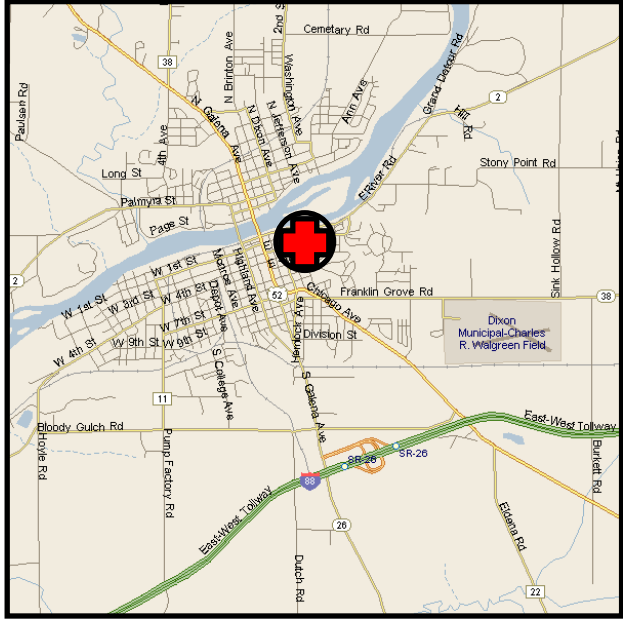
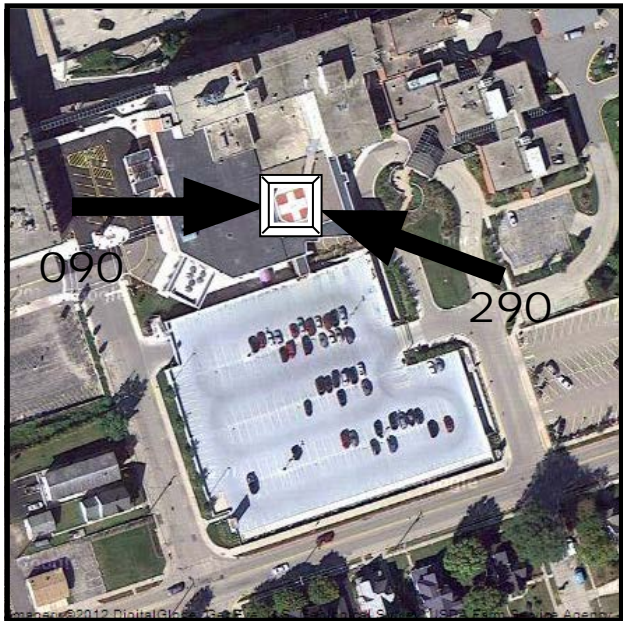
FACILITY

Katherine Shaw Bethea
Hospital
403 E. First St.
Dixon, IL 61201

TLOF: 40' X 42'

SPECIAL NOTES:

New Photo



Amended: 2012-02-20

PAGE 35

Dixon – Katherine Shaw Bethea Hospital

49IS

Downers Grove – Advocate Good Samaritan Hospital OIL4

NAV

Lat: N 41° 49.0'
Long: W 88° 00.5'

COMM

Freq: 155.340
PL: 107.2 W:16
Ph: 630-275-5900

LZ INFO

Elev:
772' Rooftop
Lighting:
Perimeter, Flood
Beacon:
Yes
Wind Sock:
Yes – Lighted

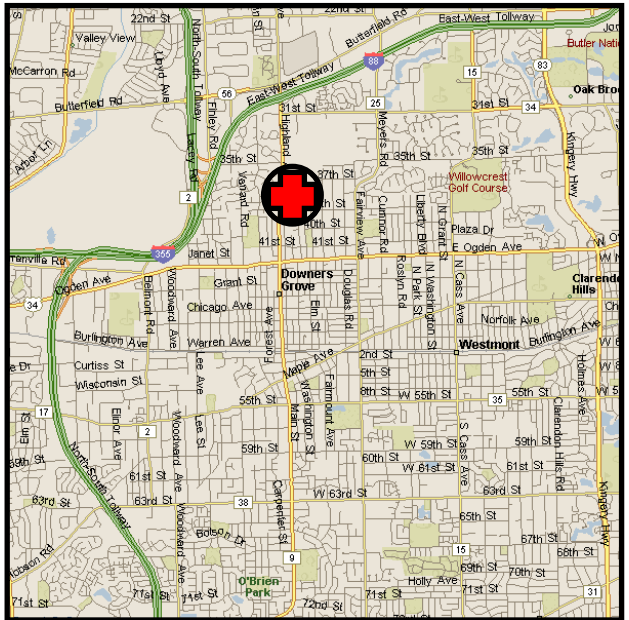
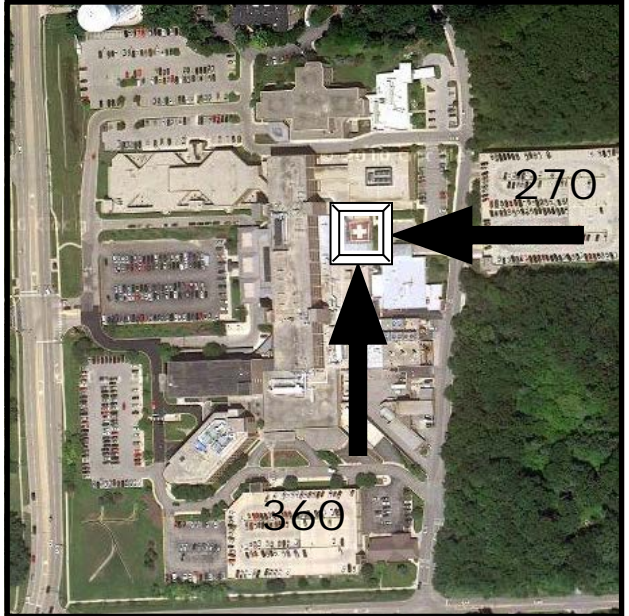
FACILITY

Advocate Good Samaritan
Hospital
3815 Highland Avenue
Downers Grove, IL 60521

TLOF: 40' X 40'

SPECIAL NOTES:

New Photo



Amended: 2012-02-20

PAGE 36

DuQuoin – Marshall Browning Hospital

14IS

NAV

Lat: N 38° 01.5'
Long: W 89° 14.2'

COMM

Freq: 155.340
PL: 110.9 **W:**17
Ph: 618-542-2146

LZ INFO

Elev:
454' Surface
Lighting:
Perimeter
Beacon:
No
Wind Sock:
Yes – Lighted

FACILITY

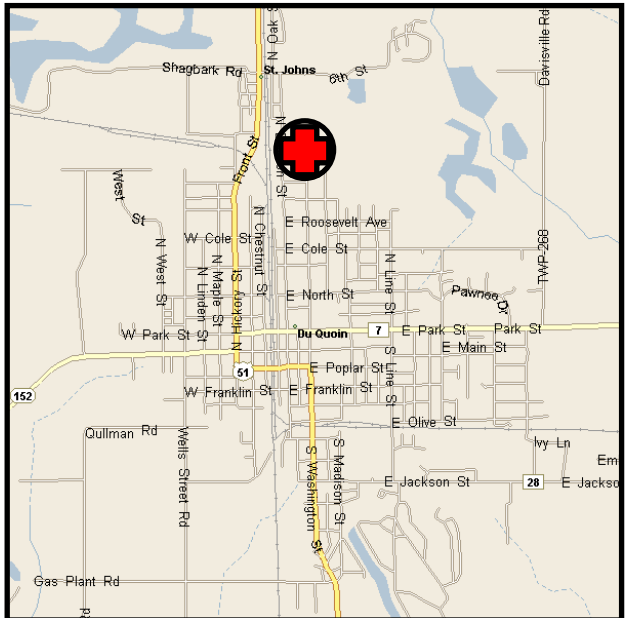
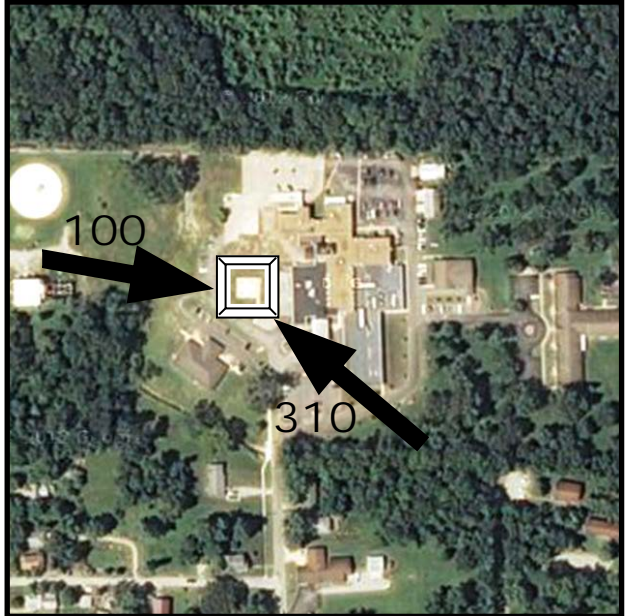
Marshall Browning Hospital
900 N. Washington St.
DuQuoin, IL 62832

TLOF: 40' X 40'

SPECIAL NOTES:

CAUTION:
87' unlit tower 500' west

New Photo



Amended: 2012-05-29

PAGE 37

Effingham – St. Anthony's Memorial Hospital 11IS

NAV

Lat: N 39° 07.5'

Long: W 88° 33.0'

COMM

Freq: 155.340

PL: 192.8 W:37

Ph: 217-342-2121

LZ INFO

Elev:

593 Surface

Lighting:

Perimeter

Beacon:

Yes

Wind Sock:

Yes – Lighted

FACILITY

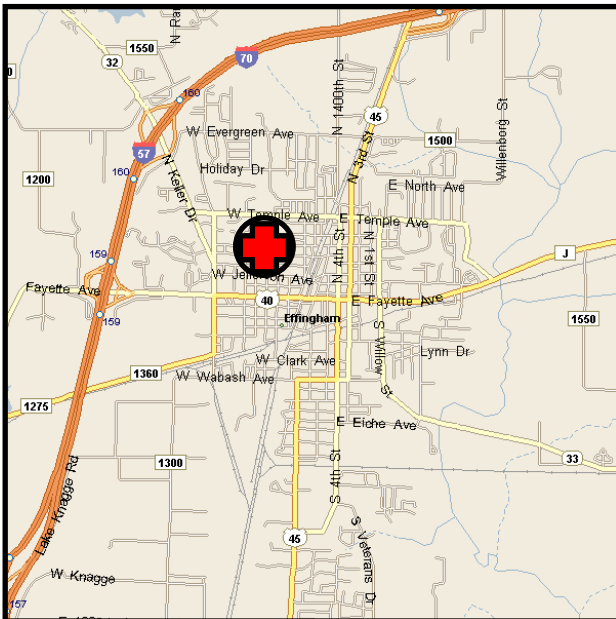
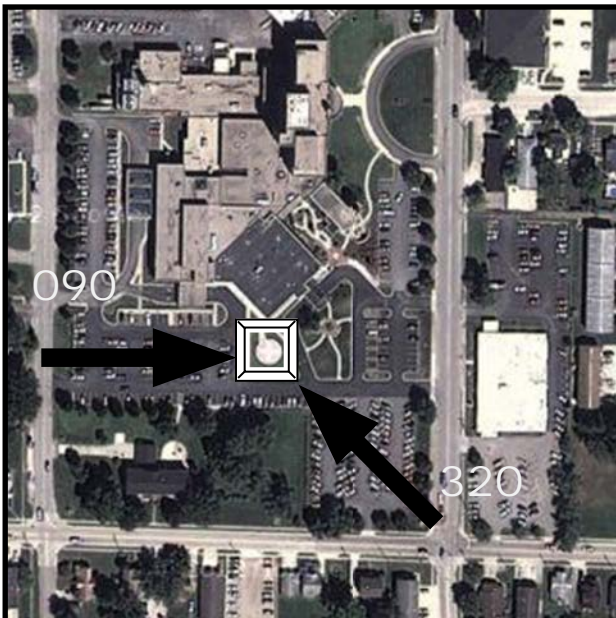
St. Anthony's Memorial
Hospital

503 N. Maple St.
Effingham, IL 62401

TLOF: 40' X 40'

SPECIAL NOTES:

Corrected elevation



Amended: 2018-04-10

PAGE 38

Elgin – Presence St. Joseph Hospital

IS2Ø

NAV

Lat: N 42° 02.1'
Long: W 88° 19.6'

COMM

Freq: 155.400
PL: 114.8 W:18
Ph: 847-695-3200

LZ INFO

Elev:
892' Roof
Lighting:
Perimeter, Flood
Beacon:
Yes
Wind Sock:
Yes – Lighted

FACILITY

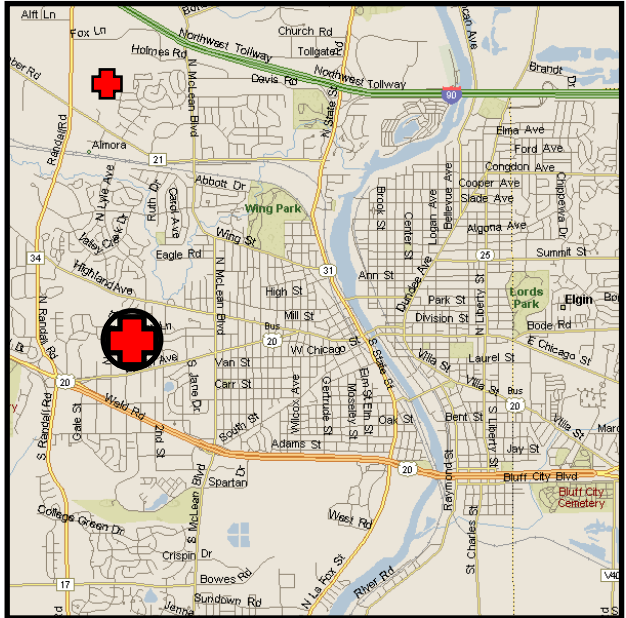
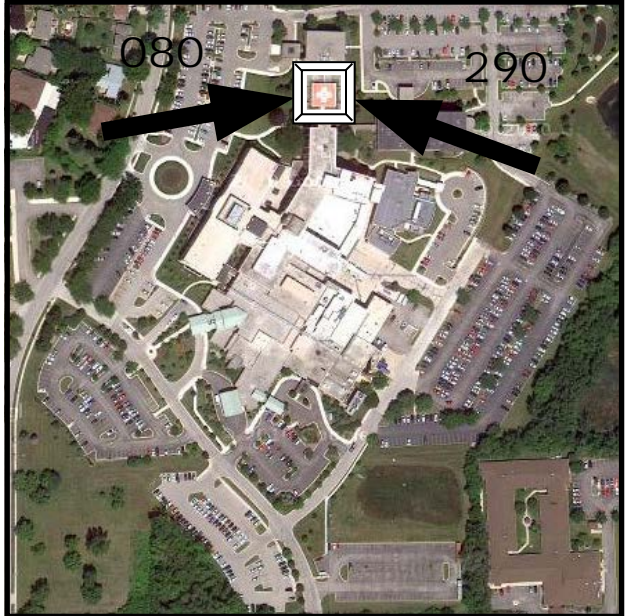
Presence St. Joseph
Hospital
77 N. Airlite
Elgin, IL 60123

TLOF: 40' X 40'

SPECIAL NOTES:

Note: Advocate Sherman
Hospital to the North.

Name Change from
Provena to Presence



Amended: 2015-10-16

PAGE 39

Elgin – Advocate Sherman Hospital

25LL

NAV

Lat: N 42° 04.33'
Long: W 88° 19.78'

COMM

Freq: 155.400
PL: 110.9 W:17
Ph: 847-742-9800

LZ INFO

Elev:
905' Surface
Lighting:
Perimeter, Flood
Beacon:
Yes, Non-Standard
Wind Sock:
Yes – Lighted

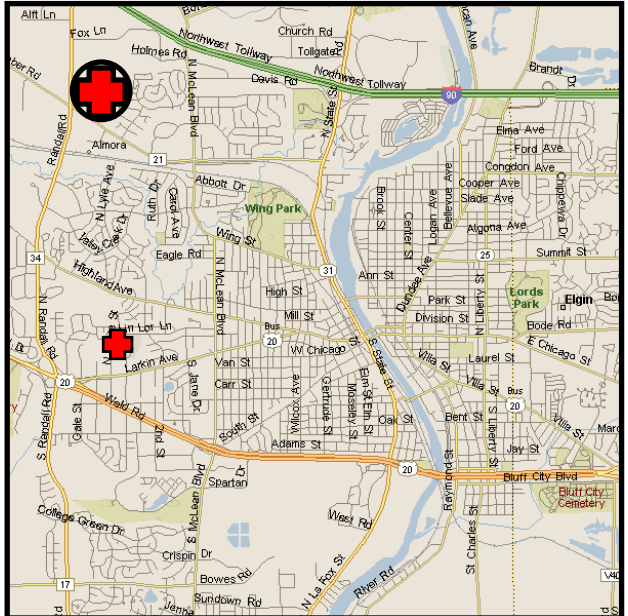
FACILITY

Advocate Sherman
Hospital
1425 Randall Road
Elgin, IL 60123

SPECIAL NOTES:

Note: Presence St. Joseph
Hospital to the South

Name change to Advocate.



Amended: 2018-04-10

PAGE 40

Elk Grove Village – Amita Health Alexian Bros. 23IL

NAV

Lat: N 42° 00.3'
Long: W 88° 01.1'

COMM

Freq: 155.400
PL: 167.9 W:33
Ph: 847-437-5500

LZ INFO

Elev:
705' Surface
Lighting:
Perimeter
Beacon:
Yes
Wind Sock:
Yes – Lighted

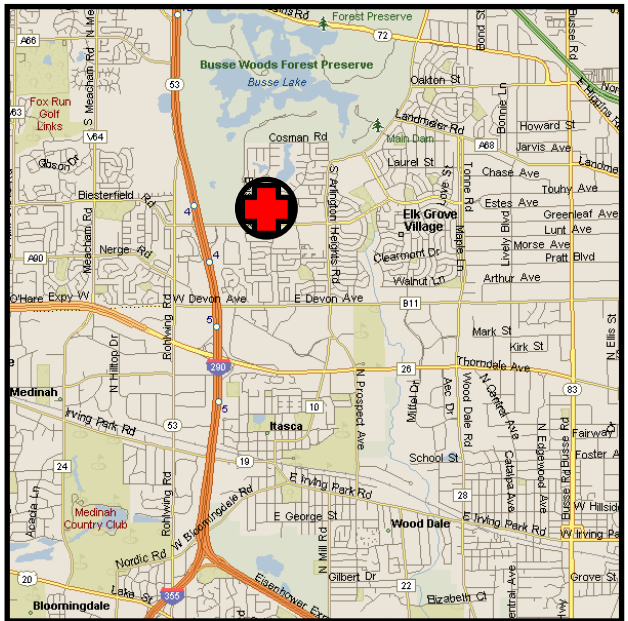
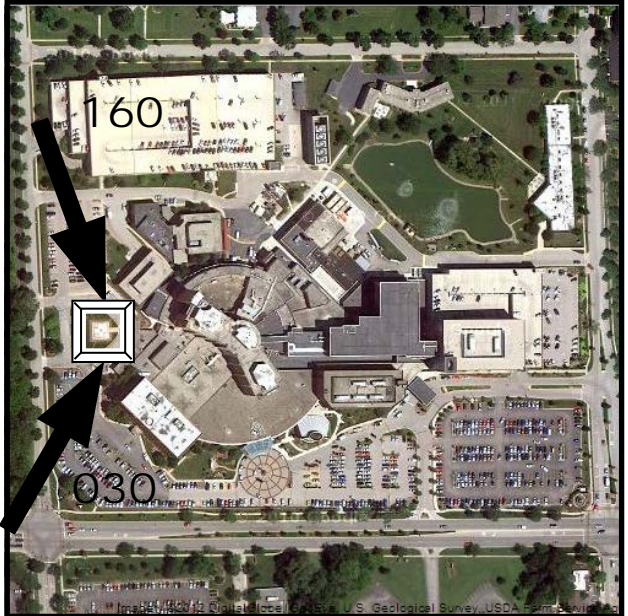
FACILITY

Amita Health - Alexian
Brothers Medical Center
800 W. Biesterfield Rd.
Elk Grove Village, IL 60007

TLOF: 40' X 40'

SPECIAL NOTES:

Name Change



Amended: 2018-06-19

PAGE 41

Elk Grove Village – Amita Health Alexian Bros. 23IL

NAV

Lat: N 41° 51.87'
Long: W 87° 56.23'

COMM

Freq: 155.340
PL: 192.8 W:37
Ph: 331-221-5500

LZ INFO

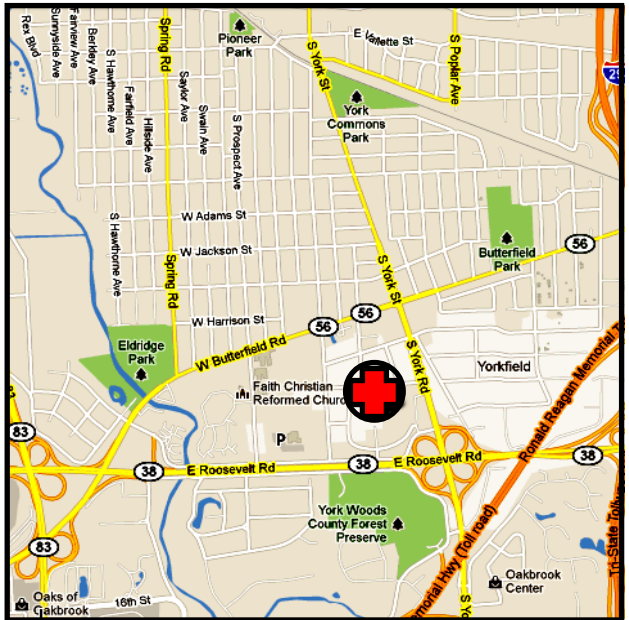
Elev: 674' Surface
Lighting: Perimeter
Beacon: No
Wind Sock: Yes – Lighted

FACILITY

Elmhurst Memorial Healthcare
155 E. Brush Hill Road
Elmhurst, IL 60126
TLOF: 44' X 44'

SPECIAL NOTES:

New Photo



Amended: 2015-10-16

PAGE 42

Fairfield – Fairfield Memorial Hospital

9IL8

NAV

Lat: N 38° 22.8'

Long: W 88° 22.6'

COMM

Freq: 155.340

PL: 151.4 W:28

Ph: 618-842-2611

LZ INFO

Elev:

450' Surface

Lighting:

Perimeter

Beacon:

Yes

Wind Sock:

Yes – Lighted

FACILITY

Fairfield Memorial Hospital

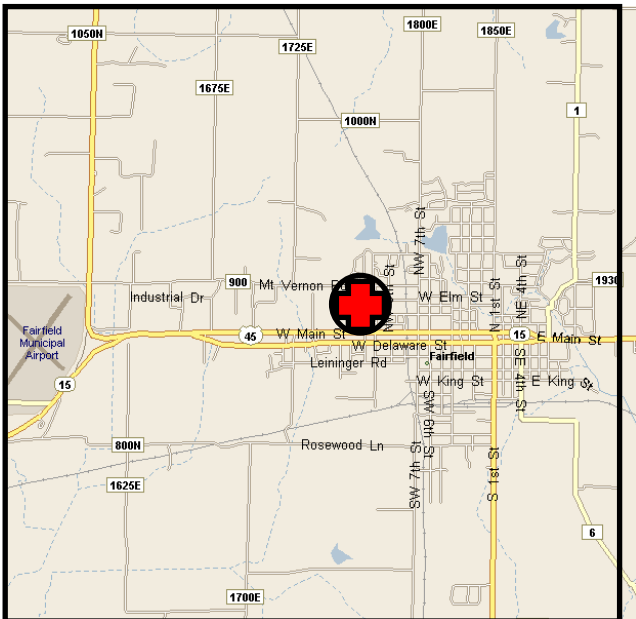
303 Northwest 11th St.

Fairfield, IL 62837

TLOF: 40' X 40'

SPECIAL NOTES:

New Photo



Amended: 2015-10-15

PAGE 43

NAV

Lat: N 38° 40.8'
Long: W 88° 28.4'

COMM

Freq: 155.340
PL: 136.5 W:25
Ph: 618-662-2131

LZ INFO

Elev:
475' Surface
Lighting:
Perimeter
Beacon:
Yes
Wind Sock:
Yes – Lighted

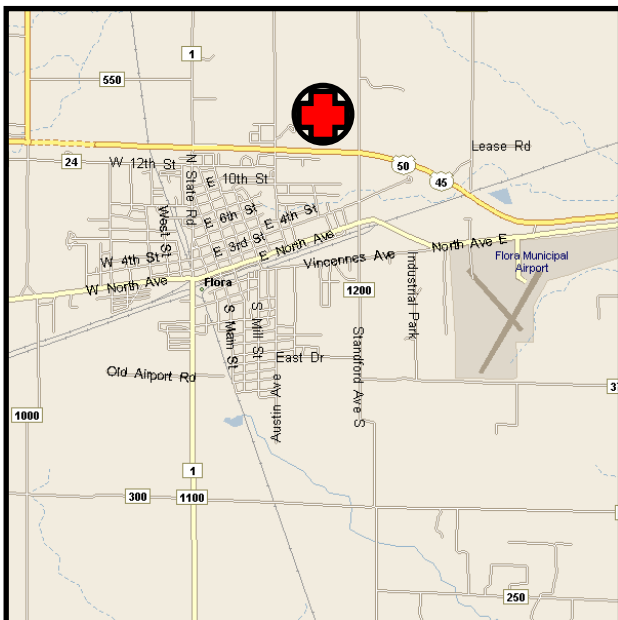
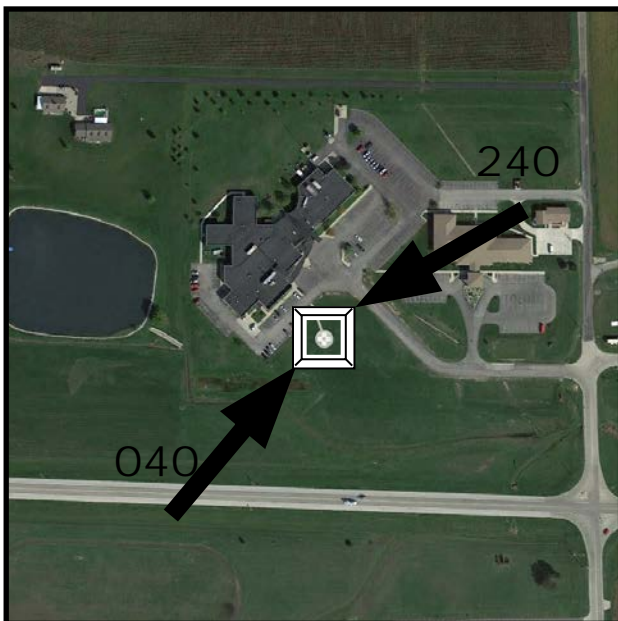
FACILITY

Clay County Hospital
911 Stacy Burk Dr.
P.O. Box 280
Flora, IL 62839

TLOF: 40' X 40'

SPECIAL NOTES:

New Photo



Amended: 2015-10-16

PAGE 44

Freeport – FHN Memorial Hospital

50IS

NAV

Lat: N 42° 17.7'

Long: W 89° 38.3'

COMM

Freq: 155.340

PL: 136.5 W:25

Ph: 815-599-6000

LZ INFO

Elev:

870' Roof

Lighting:

Perimeter

Beacon:

Yes

Wind Sock:

Yes – Lighted

FACILITY

Freeport Memorial Hospital

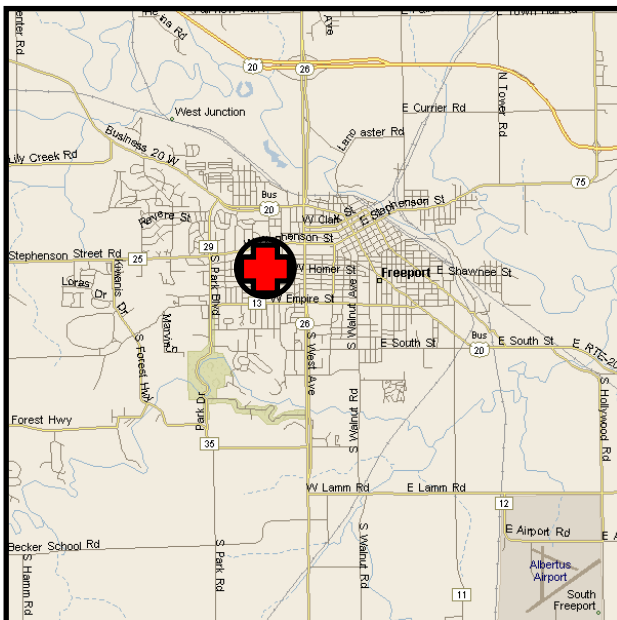
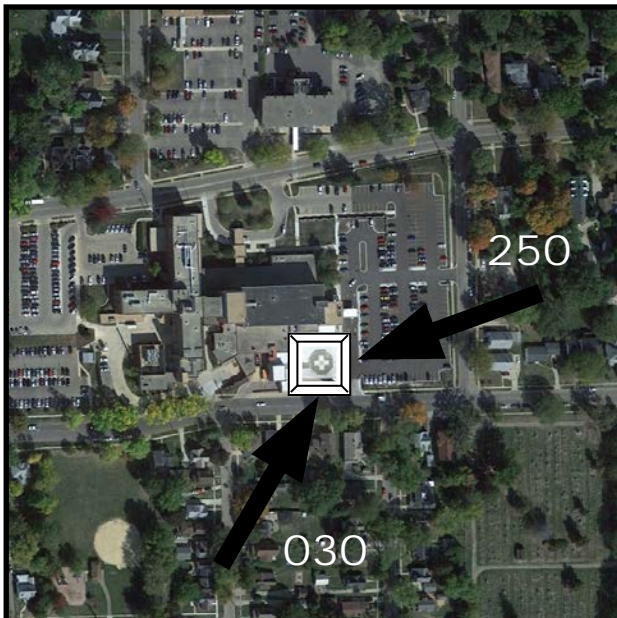
1045 W. Stephenson

Freeport, IL 61032

TLOF: 50' X 50'

SPECIAL NOTES:

New Photo



Amended: 2015-10-16

PAGE 45

Galena – Midwest Medical Center

13IL

NAV

Lat: N 42° 27.0'
Long: W 90° 27.4'

COMM

Freq: 155.340
PL: 77.0 **W:**04
Ph: 815-777-1340

LZ INFO

Elev:
865' Surface
Lighting:
Perimeter, Flood
Beacon:
None
Wind Sock:
Yes – Lighted

FACILITY

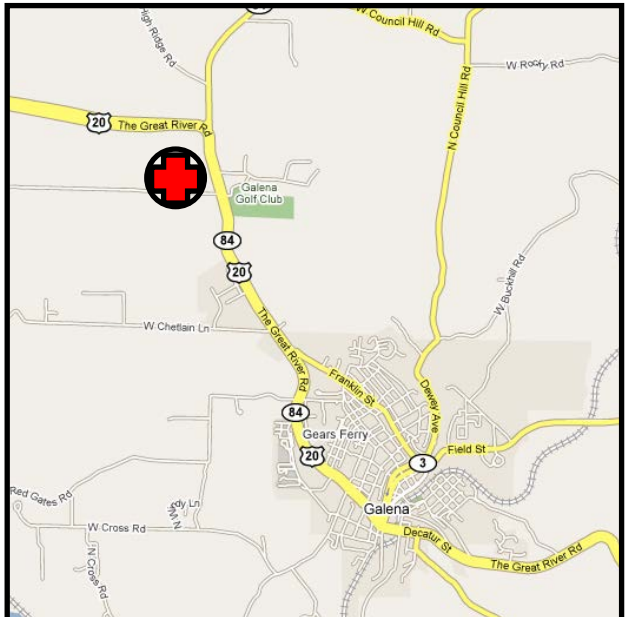
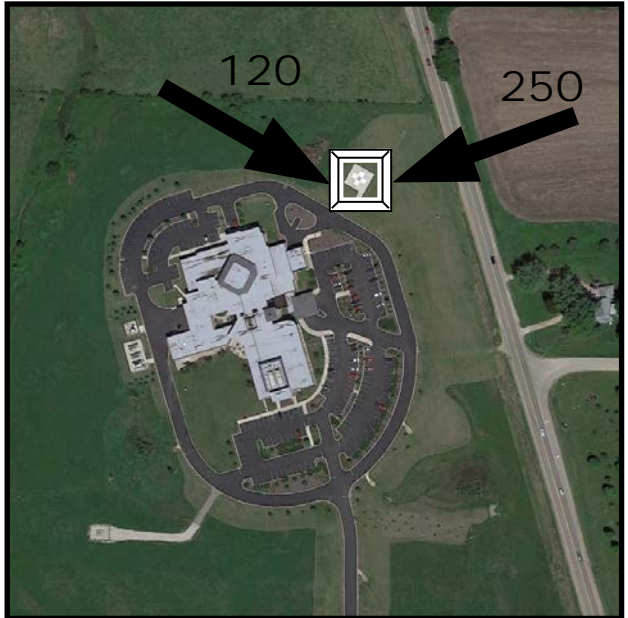
Midwest Medical Center
One Medical Drive.
Galena, IL 61036

TLOF: 44' X 44'

SPECIAL NOTES:

CAUTION: Avoid overflight
of farm north of heliport.

New Photo



Amended: 2015-10-16

PAGE 46

Galesburg – Cottage Hospital

5IL3

NAV

Lat: N 40° 57.3'
Long: W 90° 21.9'

COMM

Freq: 155.340
PL: 107.2 W:16
Ph: 309-343-8131

LZ INFO

Elev:
850' Roof
Lighting:
Perimeter
Beacon:
Yes
Wind Sock:
Yes – Lighted

FACILITY

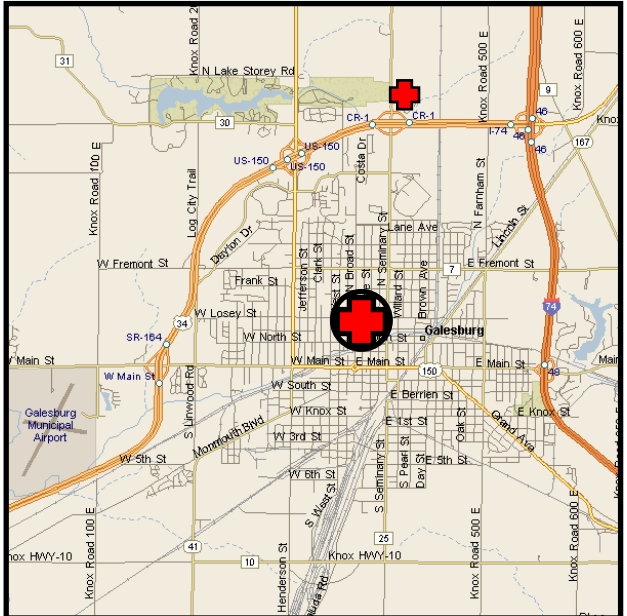
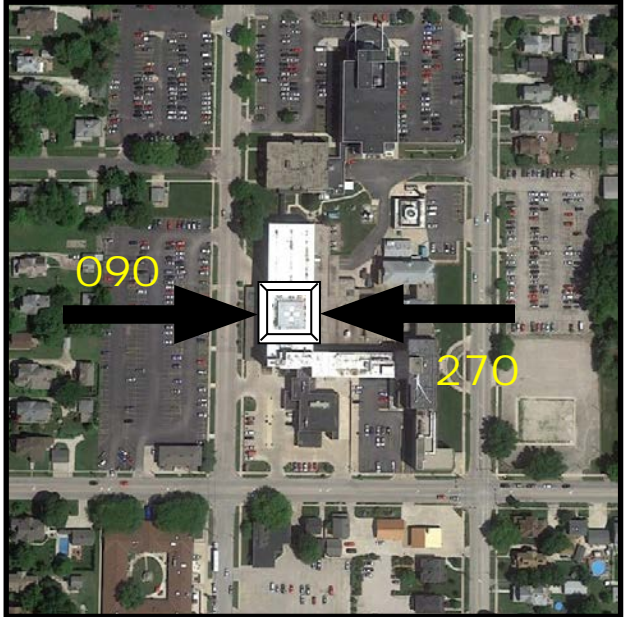
Galesburg Cottage
Hospital
695 N. Kellogg
Galesburg, IL 61401

TLOF: 45' X 45'

SPECIAL NOTES:

Note: OSF St. Mary
Medical Center to the
North by I-74

New Photo



Amended: 2018-08-16

PAGE 47

Galesburg – Cottage Hospital

5IL3

Galesburg – OSF St. Mary Medical Center

IL89

NAV

Lat: N 40° 59.2'
Long: W 90° 21.7'

COMM

Freq: 155.340
PL: 107.2 W:16
Ph: 309-344-3161

LZ INFO

Elev:
790' Surface
Lighting:
Perimeter, Flood
Beacon:
Yes
Wind Sock:
Yes – Lighted

FACILITY

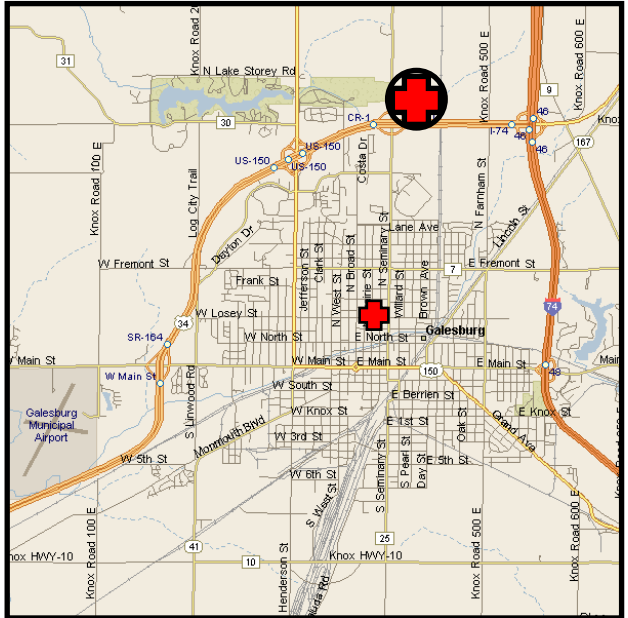
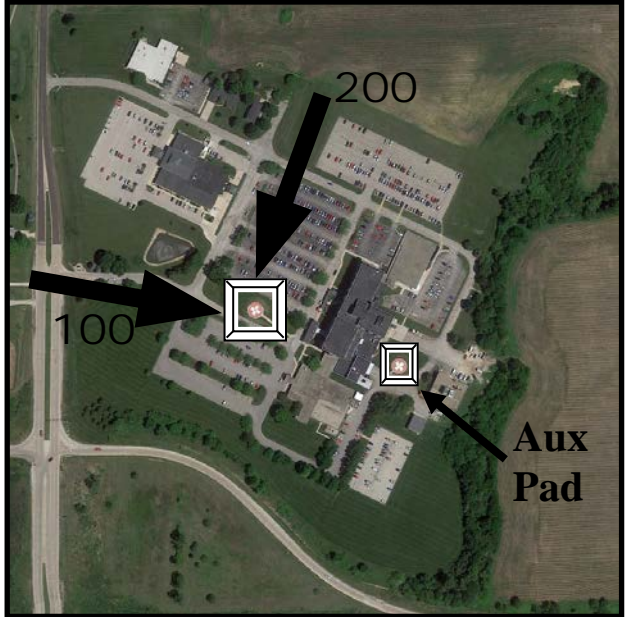
OSF St. Mary Medical
Center
3333 N. Seminary
Galesburg, IL 61401

TLOF: 50' X 50'

SPECIAL NOTES:

Caution: Primary Pad is
WEST of Hospital.

Note: Cottage Hospital in
the center of town



Amended: 2015-10-16

PAGE 48

Geneseo – Hammond-Henry Hospital

3LL2

NAV

Lat: N 41° 27.7'
Long: W 90° 09.4'

COMM

Freq: 155.340
PL: W:
Ph: 309-944-5650

LZ INFO

Elev:
650' Surface
Lighting:
Perimeter, Flood
Beacon:
No
Wind Sock:
Yes – Lighted

FACILITY

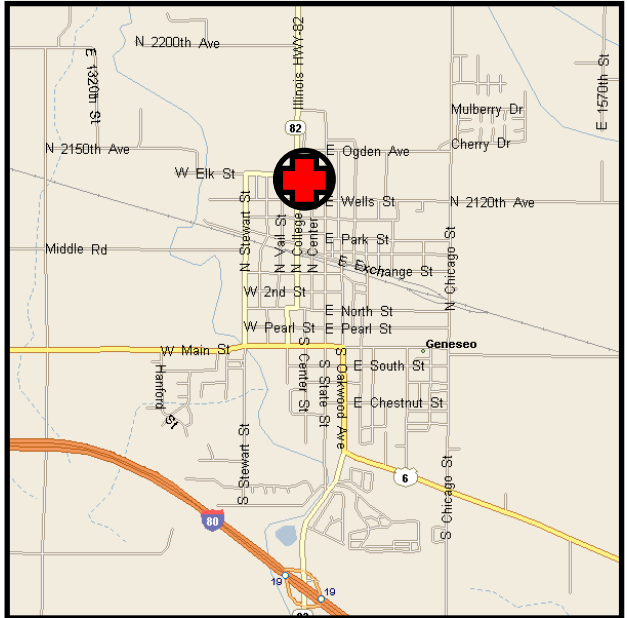
Hammond-Henry Hospital
600 N. College Ave.
Geneseo, IL 61254

TLOF: 40' X 40'

SPECIAL NOTES:

Caution: Unlit Tower
Northwest

New phone number



Amended: 2018-04-10

PAGE 49

Geneva – Delnor Community Hospital

76IL

NAV

Lat: N 41° 53.2'
Long: W 88° 20.7'

COMM

Freq: 155.340
PL: 114.8 W:18
Ph: 630-208-3000

LZ INFO

Elev:
770' Surface
Lighting:
Perimeter, Flood
Beacon:
No
Wind Sock:
Yes – Lighted

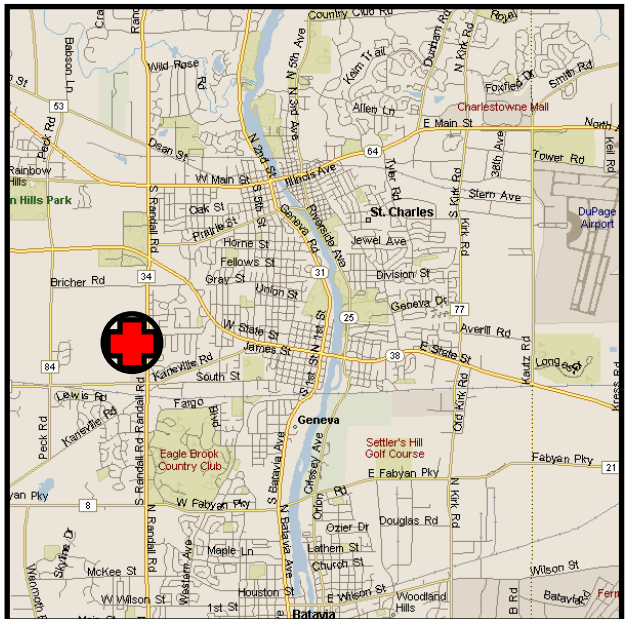
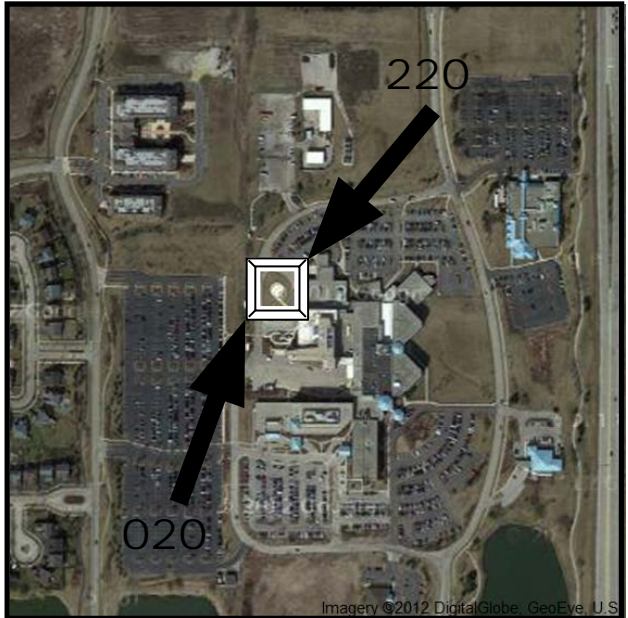
FACILITY

Delnor Community
Hospital
300 Randall Rd.
Geneva, IL 60134

TLOF: 50' X 50'

SPECIAL NOTES:

New Photo



Amended: 2012-05-29

PAGE 50

Geneva – Delnor Community Hospital

76IL

Gibson City – Gibson Community Hospital

9IS8

NAV

Lat: N 40° 28.8'
Long: W 88° 22.1'

COMM

Freq: 155.340
PL: 136.5 **W:**25
Ph: 217-784-4251

LZ INFO

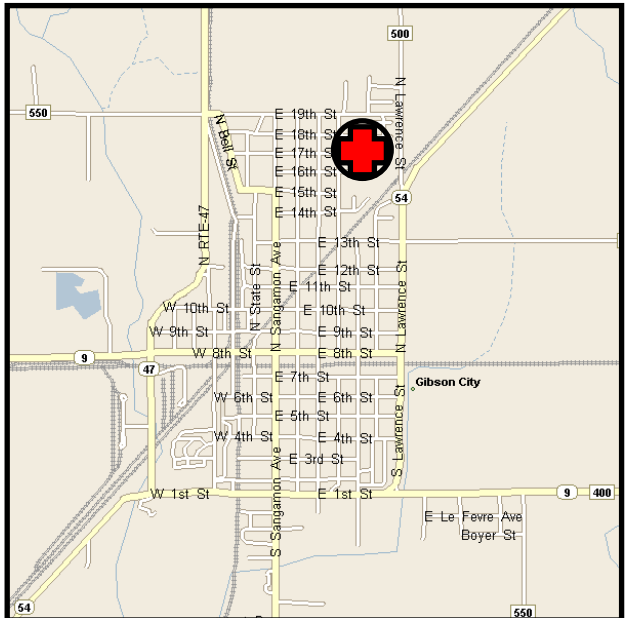
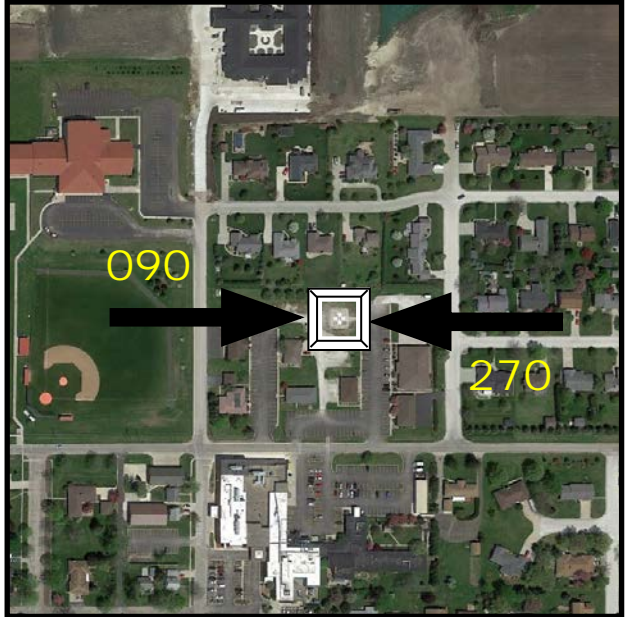
Elev:
783' Surface
Lighting:
Perimeter
Beacon:
No
Wind Sock:
Yes – Lighted

FACILITY

Gibson Community
Hospital
1120 N. Melvin St.
Gibson City, IL 60936

SPECIAL NOTES:

New Photo, name change



Amended: 2017-07-27

PAGE 51

Gibson City – Gibson Community Hospital

9IS8

Glendale Heights – Adventist GlenOaks Hosp. IS09

NAV

Lat: N 41° 54.9'
Long: W 88° 03.3'

COMM

Freq: 155.340
PL: 141.3 **W:**26
Ph: 630-545-8000

LZ INFO

Elev:
740' Surface
Lighting:
Flood
Beacon:
Yes
Wind Sock:
Yes – Lighted

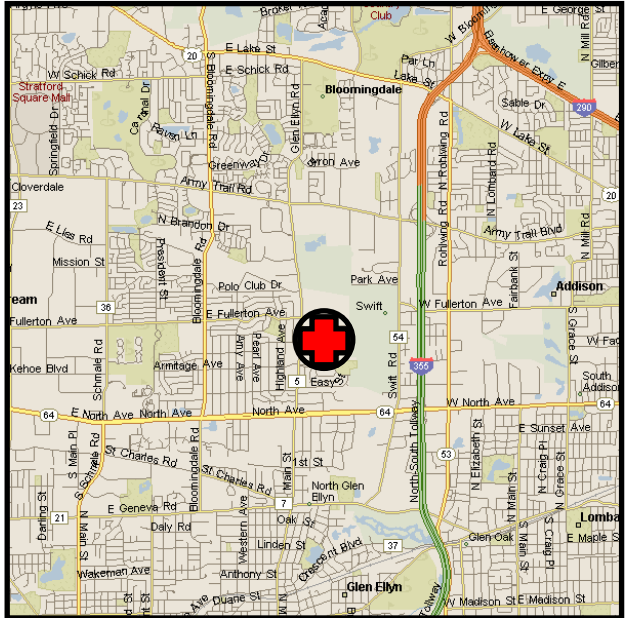
FACILITY

GlenOaks Hospital
701 Winthrop Ave.
Glendale Heights, IL 60139

TLOF: 60' X 70'

SPECIAL NOTES:

New Photo



Amended: 2012-05-29

PAGE 52

Glendale Heights – Adventist GlenOaks Hosp. IS09