

State Fiscal Year
2019
SPR-PL
TRANSPORTATION
PLANNING
WORK PROGRAM



June 28, 2018

CONTENTS

Contents

Introduction	3
Objectives for Fiscal Year 2019	3
State Planning and Research Funds	3
Organization of the Illinois Department of Transportation	4
Organization of the Office of Planning and Programming	4
Summary	7
Chapter One - New Projects	8
Illinois Department of Transportation Projects	8
External Projects	25
Chapter Two – Metropolitan Planning Summary of Work	71
Metropolitan Planning Program Objectives	71
Anticipated Accomplishments for Fiscal Year 2019	71
Unified and Technical Planning Work Programs	71
Marks Determination Table	73
Illinois Metropolitan Planning Organizations: Funding Summary by State and Federal Job Numbers ..	74
Summary of Metropolitan Planning Organizations	75
Chapter Three – Multi-Year Projects from Previous Programs	91
Appendix A - Office of Planning and Programming Job Numbering System	106
OPP Job-Numbering System	106
Budgetary Responsibility Code	106
Appendix B Illinois Highway Statewide Planning and Research Program and Metropolitan Planning Program	107
A. Available Estimated Federal Funds	107
B. Total Estimated Participating Costs	107
C. Proposed Financing	108
Appendix C - Glossary	109

Introduction

Objectives for Fiscal Year 2019

Each year the Office of Planning and Programming (OPP) analyzes its planning and programming initiatives for consistency with current goals and objectives of the Long Range Transportation Plan. This exercise forms the basis for assessing the current and proposed activities included within this program.

Objectives identified during the Long Range Transportation Plan (LRTP) development that guide the highway and intermodal planning processes and investment strategies of the Department for this year's document include:



State Planning and Research Funds

Statewide Planning & Research (SPR) funds are used to support planning and research activities. The funds are used to establish a cooperative, continuous, and comprehensive framework for making transportation investment decisions and to carry out transportation planning and research activities throughout the state.

Eligible activities include:

- Planning studies
- Data purchase, collection and/or analysis
- Research activities
- Program development activities
- Performance management activities
- Coordination/outreach activities

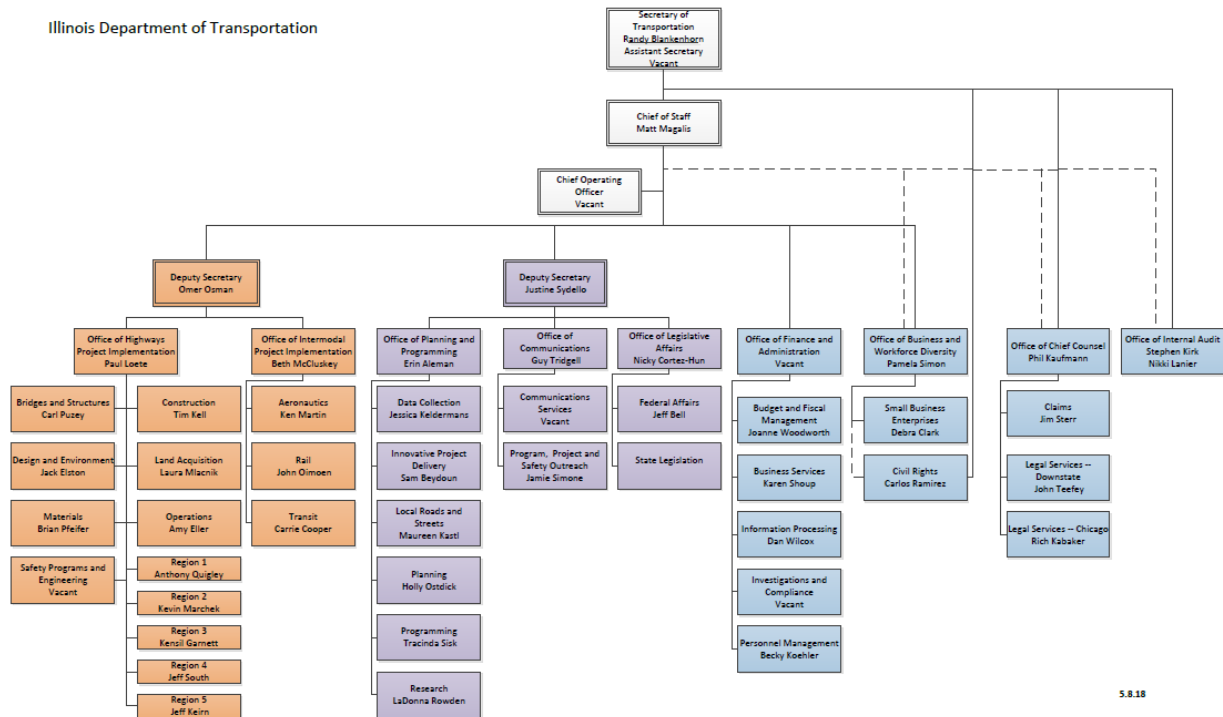
As part of the release of the Long Range Transportation Plan (LRTP), IDOT completed a call for projects for SPR funds. These funds were made available to internal and external parties. The call was released at the same time as the LRTP for public comment to incite projects that support implementation activities or further study of the objectives and goals identified in the LRTP but to

also encourage review and input on the objectives and goals identified in the LRTP. The Bureau of Planning evaluated the proposed projects that were received based on the following criteria:

- Studying or implementing a goal, strategy or objective within the state’s Long Range Transportation Plan or one of the department’s associated plans.
- Implementing a performance based program development process.
- Implementing asset management.

Organization of the Illinois Department of Transportation

IDOT consists of nine supporting offices. The following organization chart represents the basic structure and the department’s senior management.



Organization of the Office of Planning and Programming

The Office of Planning & Programming (OPP) is responsible for the development of the Department’s program and budget to maintain, enhance, and strategically expand the State of Illinois Transportation system. Also, the office is responsible for conducting the following activities for the state’s transportation program and budget.

- Data Collection and Analysis
- Policy Analysis
- Identifying Resources
- Conducting Research
- Long Range Planning
- Department Goal Development

Four documents guide the Department’s transportation planning process.

1. Illinois Long Range Transportation Plan and related planning documents and future problems and solutions related to managing the existing and future transportation system. These plans are used in maintaining, enhancing, and strategically expanding the transportation system to serve the state's future needs.
2. State Transportation Improvement Program (STIP) document details a tentative allocation of resources anticipated during the next five years and a specific scheduling of projects.
3. IDOT's annual program is published which details the upcoming year's anticipated accomplishments.
4. The construction and grants budget request identifies specific sources for financing this program during the coming fiscal year and provides the basis for appropriation requests from the Illinois General Assembly.

While OPP is accountable for directing the development of the state's transportation plans and programs, the resulting products represent the input of the Department and stakeholders across the state.

Key activities of OPP relate to policy development, metropolitan planning, air quality planning and interagency liaison functions. In the policy area, the office provides staff support to facilitate policy decisions related to the state appropriations and substantive legislations that impacts transportation. The office administers the state's Metropolitan Planning Program which is funded with federal funds and provides planning support to the state's metropolitan areas enabling local officials to participate in the development of their respective components of the state's plans and programs.

The office represents the department on interagency energy, economic development, and rural revitalization task forces and committees that address the role and the responsibility of transportation in total system planning.

The organization of OPP reflects a structuring of the planning and programming functions. This structuring allows for an integration of activities, which maximizes staff's abilities to meet program objectives, long range goals, and to respond to new programs in transportation planning.

The **Bureau of Planning** is responsible for development an assessment of the existing transit, rail, freight, waterway and aviation systems; developing those elements for multi-modal planning and multi-year programming purposes including a recommended annual improvement program. The bureau develops the Long Range Transportation Plan and other multi-modal plans. The bureau also manages the Metropolitan Planning Program. The bureau is responsible for ensuring the federally required performance management requirements are met and reported to the Federal Highway Administration. The bureau also provides information technology support, fiscal processing, data processing, and graphic services to OPP. In addition, the bureau also prepares the Official State Highway map and other transportation maps for rail, ports, transit, counties and scenic byways.

The **Bureau of Programming** develops an assessment of the existing highway system and identifies current and future needs for planning and programming purposes while considering constraints. The bureau is responsible for development programs of projects for highways and reporting on accomplishments of those programs. To do this they develop programming guidelines to address statewide goals and objectives, needs assessment, system data including

collection and grant programs. The bureau is responsible for ongoing data submittals to FHWA to meet statutory requirements and funding allocation criteria through Highway Performance Monitoring System (HPMS), National Bridge Inventory (NBI) and continuous count traffic data. Also, maintains roadway and bridge data.

The **Bureau of Innovative Project Delivery** oversees the department's initiatives to explore the leveraging of private resources in project implementation and agency operations. The bureau coordinates with private sector and public entities to expedite project delivery and maximize innovation in the financial, design, construction, operation and maintenance of mayor transportation infrastructure projects.

The **Bureau of Data Collection and Mapping** maintains transportation data systems such as, roadway condition information, traffic data and crash reports filed by motorists and law enforcement officers. The bureau is responsible for preparing the annual Crash Fact report.

The **Bureau of Research** coordinates the departments federally and state funded research activities, including all Strategic Highway Research and National Cooperative Research and Transportation Research Board Programs (NCHRP). Research activities are primarily conducted through an intergovernmental agreement with the University of Illinois at Champaign-Urbana which funds the Illinois Center for Transportation.

The **Bureau of Local Roads and Streets** is responsible for administering the expenditure of a wide variety of funds for transportation purposes available to local government agencies. The bureau also renders guidance and assistance to local agencies in planning, financing, designing, constructing, and maintaining local highway and street systems.

Summary

This FY 2019 Transportation Planning Work Program totals \$66,000,000.

The primary focus of OPP's FY 2019 Transportation Planning Work Program is the planning and planning oriented activities performed with the State of Illinois at various levels – the Office of Planning and Programming, the District level, and the Metropolitan Planning Organizations (MPO's). The total Federal costs of this effort is \$52,797,141.

The funding for the transportation planning and programming work described in this document is expected to come from the following sources:

Item	Federal SPR Amount	Federal PL Amount	Federal FTA Amount	*State/Local Amount	Total Costs
New IDOT SPR Projects	\$6,468,392			\$1,617,098	\$8,085,490
New External SPR Projects	\$7,030,296			\$1,757,574	\$8,787,870
Multi-Year SPR Contracts	\$16,317,614			\$4,079,404	\$20,397,018
Total SPR Funds	\$29,816,302			\$7,454,076	\$37,270,378
MPO PL Funds		\$18,024,641		\$4,506,160	\$22,530,801
MPO FTA Funds			\$5,343,904	\$1,335,976	\$6,679,880
Total FY 2019 Funds		\$18,024,641	\$5,343,904	\$5,842,136	\$29,210,681
Total FY 2019 SPR PL & FTA	\$29,816,302	\$18,024,641	\$5,343,904	\$13,296,212	\$66,481,059

*Match Details:

ITEM	State Match	Local Match	Total
New IDOT SPR Projects	\$1,617,098		\$1,617,098
New External SPR Projects	\$207,000	\$1,550,573	\$1,757,574
Multi-Year SPR Projects	\$4,079,404		\$4,079,404
MPO PL Funds	\$4,211,440	\$294,720	\$4,506,160
MPO FTA Funds	\$1,266,030	\$69,945	\$1,335,976
TOTAL	\$11,380,972	\$1,915,238	\$13,296,212

Chapter One - New Projects

Illinois Department of Transportation Projects

CHAPTER ONE - PART ONE IDOT PROJECTS

Estimated Program Costs by Job Number

Function	APA STATE JOB NUMBER	Title	Federal Project Number	Total Amount
D44	HPR-66-018-19	AASHTOWARE Bridge Prod License	1T5H(720)	\$295,000
D45	HPR-66-019-19	Dev & Crash Testing Mntd Bike Railing	TYRV(406)	\$250,000
D46	HPR-66-020-19	Green Friendly Practices at Rest Areas	L5EU(442)	\$300,000
D47	HPR-66-021-19	Bridge Inspect Access Equip Purchase	DJZ5(436)	\$1,250,000
D48	HPR-66-022-19	All Hazards Bridge Flooding Tool	BI6S(411)	\$343,750
D49	HPR-66-023-19	Re-Imaging Public Engagement IDOT	JLZZ(664)	\$100,000
D50	HPR-66-024-19	Illinois State Bicycle Map Printing	RYY7(948)	\$50,000
D51	HPR-66-025-19	Official Illinois Highway Map Printing	FINH(716)	\$320,240
D52	HPR-66-026-19	Information Technology Support	QSLK(578)	\$1,440,000
D53	HPR-66-027-19	Ent Asset Management Plan	XIIA(083)	\$750,000
D54	HPR-66-028-19	Cell Phone Based Roughness Index	F2P4(776)	\$218,000
D92	HPR-66-039-19	IL Pipeline Inventory	ZFGV(175)	\$250,000
D93	HPR-66-040-19	Distracted Drive Summit	7B68(023)	\$500,000
D94	HPR-66-041-19	Statewide Truck Bottleneck Diagnosis	FAPY(017)	\$250,000
D96	HPR-66-070-19	General Strategic Services Consultant	HNQZ(328)	\$500,000
D97	HPR-66-071-19	Bike Maps/Network	IYKU(495)	\$200,000
D98	HPR-66-072-19	Transportation Demand Management	Z8LT(765)	\$250,000
D37	HPR-66-162-18	Capacity Building Travel/Peer Exchange	3SKQ(836)	\$100,000
E01	HPR-66-074-19	Donnie Lot Parking Study	IDVP(089)	\$250,000
E02	HPR-66-075-19	Advanced ATMS Study	OZM1(850)	\$250,000
E10	HPR-66-083-19	National Scenic Byways in Illinois	WEF5(172)	\$218,500
			TOTAL	\$8,085,490

<u>Function</u>	<u>Office</u>	<u>Bureau</u>	<u>Project Title</u>	<u>Description of Project</u>	<u>2019 Total Cost</u>	<u>2019 Federal Cost</u>
D44	Highways Project Implementation	Bridges & Structures (BBS)	AASHTOWare Bridge Products License Contract	The purpose of this project is to provide yearly license fees for AASHTOWare Bridge products which BBS actively uses in areas of bridge ratings, bridge design, bridge analysis for overweight permitting and bridge manage. This software directly related to the long-term goals of the department in the areas of bridge safety, system reliability and mobility.	\$295,000	\$236,000
D45	Highways	Bridges & Structures (BBS)	Development and Crash Testing of a Parapet Mounted Bicycle Railing for Test Level 4	The scope of this project is to perform a full-scale crash test on a proposed parapet mounted bicycle rail. The project will include updating the design of the department's standard railing known as the R-39 rail. The R-39 railing will be updated to include the standard single slope parapet to be used by the department beginning in 2020. The ultimate product of this project will be a standard parapet mounted bicycle railing which meets MASH 2016 Test Level 4 and will be available for use on future projects throughout the state.	\$250,000	\$200,000

<u>Function</u>	<u>Office</u>	<u>Bureau</u>	<u>Project Title</u>	<u>Description of Project</u>	<u>2019 Total Cost</u>	<u>2019 Federal Cost</u>
D46	Planning & Programming/ Highways Project Implementation	Planning & Operations	Green-Friendly Best Management Practices for Interstate Rest Areas Update	The scope of this project will be to update the Green-Friendly Best Management Practices for Interstate Rest Areas study (Green-Friendly study). This update would include the core goals of revising cost figures for all proposed improvements, prioritization of rest area improvements based on cost-effectiveness, and finally a more robust analysis on the use of solar panels for a more long-term sustainable power solution. The work product for this project is a report outlining several findings from the three core goals of the study addressed above.	\$300,000	\$240,000
D47	Highways Project Implementation	Bridges & Structures (BBS)	Bridge Inspection Access Equipment Purchase	The purpose of this project is to purchase a bridge inspection snooper (Aspen Aeial A-62) and two towable bridge inspection platforms (Anderson HP-35). This equipment will allow the close access of structural components to effectively inspect structures. The access equipment is required to inspect over 27,000 structures to determine existing and future conditions and determine deterioration curves that will be used in the Bridge Management System.	\$1,250,000	\$1,000,000

<u>Function</u>	<u>Office</u>	<u>Bureau</u>	<u>Project Title</u>	<u>Description of Project</u>	<u>2019 Total Cost</u>	<u>2019 Federal Cost</u>
D48	Planning & Programming	Planning	All-Hazards Vulnerability Assessment Bridge Flooding Tool	This project looks to continue the work done on the 2014-2017 IDOT All-Hazards Vulnerability Assessment (All-Hazards), with a series of next steps to insure the department is prepared for extreme events. These next steps include, the hiring a consultant team or additional staff to complete the entry of critical bridge hydraulic data into the Illinois Structure Information System (ISIS), the completion of flood modeling for a select number of assets, and the formation of a small advisory working group to outline how the data generated from the All-Hazards will inform project prioritization in the programming process.	\$343,750	\$275,000

<u>2020 Total Cost</u>	<u>2020 Federal Cost</u>
\$93,750	\$75,000

<u>Function</u>	<u>Office</u>	<u>Bureau</u>	<u>Project Title</u>	<u>Description of Project</u>	<u>2019 Total Cost</u>	<u>2019 Federal Cost</u>
D49	Communications	Program, Project & Safety Outreach	Re-imagining Public Engagement at IDOT	Funds will hire a consultant to identify and review all current policies, manuals, practices, guidelines, etc. that are used by the department to inform the public engagement process used by employees in all areas of IDOT. Review the best practices of other DOTs that have a broader approach to engagement to learn what strategies and methods they employ. Oversee the creation and staffing of two working groups, one internal and one external, to help inform the process of revamping public engagement at IDOT. \$50,000 in SPR funding will also be needed in FY 2022.	\$100,000	\$80,000

2020 Total Cost	2020 Federal Cost	2021 Total Cost	2021 Federal
\$100,000	\$80,000	\$100,000	\$80,000

<u>Function</u>	<u>Office</u>	<u>Bureau</u>	<u>Project Title</u>	<u>Description of Project</u>	<u>2019 Total Cost</u>	<u>2019 Federal Cost</u>
D50	Planning & Programming	Planning	Illinois State Bicycle Map Printing	Revise, reprint and update Illinois bicycle maps	\$50,000	\$40,000
D51	Planning & Programming	Planning	Illinois Official Highway Map Printing	The Official Illinois State Highway Map is printed every two years and distributed free of charge throughout the state. Various versions of this map will be printed including standard print and large print maps. These maps are printed according to 605 ILCS 5/4-101.13) (from Ch. 121, par. 4-101.13) Sec. 4-101.13. To publish maps in convenient forms showing State and other highways for use by the public and, in its discretion, to fix a charge therefor not in excess of the cost of publication. (Source: Laws 1959, p. 196.)	\$320,240	\$256,192

<u>Function</u>	<u>Office</u>	<u>Bureau</u>	<u>Project Title</u>	<u>Description of Project</u>	<u>2019 Total Cost</u>	<u>2019 Federal Cost</u>
D52	Finance and Administration	Information Processing	Planning & Programming Information Technology (IT) Support	The scope of this project involves various aspects of IT data and system development, management and support. The data sources and systems will include various applications, services and databases all of which are integral to the agency's many work efforts related to transportation planning, programming, and asset management. This contract will be a four (4) to six (6) years for specialized IT consulting resources. Project deliverables will be the ongoing development, management and support of enterprise IDOT Planning and Programming applications and databases. Federal funding is also required in FY22: \$2.9 million and FY23: \$1.45 million	\$1,440,000	\$1,152,000

2020 Total Cost	2020 Federal Cost	2021 Total Cost	2021 Federal
\$2,900,000	\$2,320,000	\$2,900,000	\$2,320,000

<u>Function</u>	<u>Office</u>	<u>Bureau</u>	<u>Project Title</u>	<u>Description of Project</u>	<u>2019 Total Cost</u>	<u>2019 Federal Cost</u>
D53	Planning & Programming	Programming	Enterprise Asset Management Plan	The Department is currently working on the RFP with a contract awarded in early FY 2019 to pursue an Enterprise Asset Management Solution. This system will meet the 6 FHWA Asset Management System requirements. This system will integrate with the current Bridge and Pavement Inventory systems. The system will have the ability to create/integrate Strategies, Benefit Cost/Life Cycle Planning, and Deterioration models by asset class. The system will have the ability to generate a recommended 10-year Asset program based on those components to meet the Departments Asset System Goals. The 5-year agreement with the option to renew 5-years is estimated to cost \$5,300,000.	\$750,000	\$600,000

2020 Total Cost	2020 Federal Cost	2021 Total Cost	2021 Federal
\$1,100,000	\$880,000	\$350,000	\$280,000

<u>Function</u>	<u>Office</u>	<u>Bureau</u>	<u>Project Title</u>	<u>Description of Project</u>	<u>2019 Total Cost</u>	<u>2019 Federal Cost</u>
D54	Planning & Programming	Local Roads & Streets	Cell Phone Based Roughness Index Study	The International Roughness Index (IRI) is used around the globe to measure road surface profile and quantify its roughness and serviceability condition. A consultant will be selected to develop a cell-phone application and an open source user-friendly software program to be used for computing IRI and other roughness-based quality indicators for both low volume roads and state highways. This project has the potential to deliver a product that can be used widely throughout Illinois. When compared to the limited number of road profilers available in Illinois, cell phone based data collection data collection and condition assessment will help to prioritize future improvements to road/pavement assets.	\$218,000	\$174,400

2020 Total Cost	2020 Federal Cost	2021 Total Cost	2021 Federal
\$249,000	\$174,400	\$31,000	\$24,800

<u>Function</u>	<u>Office</u>	<u>Bureau</u>	<u>Project Title</u>	<u>Description of Project</u>	<u>2019 Total Cost</u>	<u>2019 Federal Cost</u>
D92	Planning & Programming	Planning	IL Pipeline Inventory	Inventory of Illinois pipelines, including tank farms and terminals. Identify and analyze locations where pipelines interact with other infrastructure.	\$250,000	\$200,000
D93	Planning & Programming	Planning	Distracted Driving Summit	Consultant services to plan and deliver Interagency Distracted Driving Summit, produce strategic plan based on outcome of summit, and assist in implementation and communication services.	\$500,000	\$400,000
D94	Planning & Programming	Planning	Statewide Truck Bottleneck Study	This study will verify and analyze bottlenecks identified in the State Freight plan, identify causes and recommend actions that can be taken to effectively enhance reliability and mitigate delay.	\$250,000	\$200,000

<u>Function</u>	<u>Office</u>	<u>Bureau</u>	<u>Project Title</u>	<u>Description of Project</u>	<u>2019 Total Cost</u>	<u>2019 Federal Cost</u>
D96	Planning & Programming	Various Offices	General Strategic Services Consultant	A consultant will be hired to Inform IDOT leadership of unique, innovative and strategic ideas, concepts, and industry leading practices, both nationally and internationally, to drive efficiencies and enhance the performance of the Department's programs and assets; • Evaluate strategic alternatives, • Review the Department's investments in Project Development, Construction, Operations, and Maintenance; • Review federal transportation management plans, Department metrics and supporting data • Any other strategy development, as requested by the Chief Operating Officer (COO) or designee. The SGSC firm will also support the overall program management needs of the COO or designee including but not limited to: • Development of presentations, reports, and guidance documents; and Department or designee.	\$500,000	\$400,000
2020 Total Cost		2020 Federal Cost	2021 Total Cost	2021 Federal		
\$1,000,000		\$800,000	\$900,000	\$720,000		

<u>Function</u>	<u>Office</u>	<u>Bureau</u>	<u>Project Title</u>	<u>Description of Project</u>	<u>2019 Total Cost</u>	<u>2019 Federal Cost</u>
D97	Planning & Programming	Planning	Bike Maps/Network	Convert existing bike maps from CADD into GIS. Update bike network in GIS format for department use.	\$200,000	\$160,000
2020 Total Cost		2020 Federal Cost				
\$250,000		\$200,000				

<u>Function</u>	<u>Office</u>	<u>Bureau</u>	<u>Project Title</u>	<u>Description of Project</u>	<u>2019 Total Cost</u>	<u>2019 Federal Cost</u>
D98	Highways	D-1	Regional Transportation Management System	The Department proposes to engage in advertisement of professional services for two different tasks which would be part of the same study so one is not mutually exclusive of the other. The first task for the Department would be to pursue replacement of the current District One Advance Traffic Management System (ATMS) which is nearing the end of its useful life. The second would be a Region One network operations study. This study would be led by District One and incorporate stakeholders from each county to ensure that a holistic approach to traffic management is considered across the transportation network. We also intend to include our Expressway Systems in Region One as it influences arterial operations. Will coordinated with Bureau of Operations Study (Function #E02).	\$250,000	\$200,000
2020 Total Cost		2020 Federal Cost	2021 Total Cost	2021 Federal Cost		
\$300,000		\$240,000	\$200,000	\$160,000		

<u>Function</u>	<u>Office</u>	<u>Bureau</u>	<u>Project Title</u>	<u>Description of Project</u>	<u>2019 Total Cost</u>	<u>2019 Federal Cost</u>
D37	Planning & Programming	Planning	Capacity Building Travel and Peer Exchanges	Additional funding is being requested for the FY 2018 Capacity Building Travel and Peer Exchanges Job Number. Staff continues to participate in capacity building and training to ensure staff are well informed to implement new requirements effectively. This will include National Highway Institute or National Transit Institute Courses or conferences/workshops put on by USDOT.	\$100,000	\$80,000

<u>Function</u>	<u>Office</u>	<u>Bureau</u>	<u>Project Title</u>	<u>Description of Project</u>	<u>2019 Total Cost</u>	<u>2019 Federal Cost</u>
E01	Planning & Programming	Planning	Donnie Lot Parking Study	The Donnie Lot Truck Parking Study will review data obtained in the statewide rest area study, augment it as necessary, and describe truck parking supply and demand. The Donnie Lot Truck Parking Study would then, at a minimum, look at the 6 potential locations at interchanges that have been identified as potential truck only parking locations. The initial 6 locations were selected based on location and undeveloped land in the area. The study would include evaluating locations along interstates that have potential for truck only parking development, provide the needed support for land acquisition where required, and determine minimum and ideal amenities. A lack of truck parking results in safety, environmental and economic issues. The study is greatly needed to move forward with the growing problem of insufficient truck parking in Illinois.	\$250,000	\$200,000
2020 Total Cost		2020 Federal Cost				
\$150,000		\$120,000				

<u>Function</u>	<u>Office</u>	<u>Bureau</u>	<u>Project Title</u>	<u>Description of Project</u>	<u>2019 Total Cost</u>	<u>2019 Federal Cost</u>
E02	Highways	Operations	Statewide Advanced Transp. Management System (ATMS)	This study will explore the desirability of a uniform Statewide ATMS software for IDOT. IDOT proposes to utilize the systems engineering approach to define our ATMS needs and required functionality. The study should develop a Concept of Operations which will consider the operations requirements, identify cost and schedule for deployment, identify performance parameters, and define training and support needs. In addition to the IDOT Districts and Station One/Operations ITS staff, we suggest the committees include involvement and participation of some of the stakeholders identified in the associated District One Regional Arterial TMC Study (Function #D98) to ensure continuity and consistency between the two studies.	\$250,000	\$200,000
2020 Total Cost		2020 Federal Cost				
\$250,000		\$200,000				

<u>Function</u>	<u>Office</u>	<u>Bureau</u>	<u>Project Title</u>	<u>Description of Project</u>	<u>2019 Total Cost</u>	<u>2019 Federal Cost</u>
E10	Planning & Programming	Programming	National Scenic Byways in Illinois	IDOT will continue to give the seven National Scenic Byways in Illinois a grant agreement to promote the roadways that are designated byways and the attractions along them. In FY 18, SPR funding in the amount of \$24,750 is requested for each of the Scenic Byways.	\$218,500	\$174,800

External Projects

Estimated Program Costs

Function	APA STATE JOB NUMBER	Title	Federal Project Number	Total Amount
D55	HPR-66-029-19	Metro Mayors Caucus Municipal Fleet Study	CIUF(910)	\$246,000
D56	HPR-66-030-19	Region 1 Planning Council Mass Transit Mobility Analysis	ZDHT(058)	\$338,375
D57	HPR-66-031-19	Springfield MPO Couple LEAM & REIM Modes	FK4W(297)	\$39,317
D58	HPR-66-032-19	Peoria MPO Digital Area Photo Project	8QWB(066)	\$150,000
D59	HPR-66-033-19	Centralia Railroad Consolidation	9F62(327)	\$60,000
D60	HPR-66-034-19	Bi-State Modeling Freight Flows & System Performance	ASXS(202)	\$240,000
D61	HPR-66-035-19	Bi-State Mississippi River Rail Bridges	E74J(956)	\$100,000
D62	HPR-66-036-19	Bi-State Illinois 92 Study	W6NF(768)	\$300,000
D63	HPR-66-037-19	Champaign MPO Activating LRTP	V7ZC(112)	\$110,000
D64	HPR-66-038-19	Champaign MPO Safety Forecasting Tool	L7EW(225)	\$60,000
D65	HPR-66-042-19	Champaign MPO Kickapoo Rail Trail Extension	6L7G(284)	\$65,000
D66	HPR-66-043-19	Champaign MPO ILMUG Travel Demand Models Providing Technical Support	BGBF(360)	\$80,000
D67	HPR-66-044-19	City of Chicago Complex Intersections Framework Plan	W7YV(902)	\$375,000
D68	HPR-66-045-19	City of Chicago Economic Impacts of Livable Streets Improvements	YEGX(697)	\$75,000
D69	HPR-66-046-19	CMAP Local Technical Program Support	NSA6(276)	\$150,000
D70	HPR-66-047-19	CMAP International Port District Master Plan	W8FK(791)	\$70,000
D71	HPR-66-048-19	CMAP Pavement Management Plan	KL0I(594)	\$666,666
D72	HPR-66-049-19	CTA Blue Line Core Capacity Study	2I21(407)	\$408,000
D73	HPR-66-050-19	CTA asset Management System Enhancements	VSJU(142)	\$500,000

D74	HPR-66-051-19	City of Ottawa Columbus Street Rail Crossing Study	3ZMY(663)	\$30,000
D75	HPR-66-052-19	City of Quincy Regional Transportation Plan	ZEQI(207)	\$100,000
D76	HPR-66-053-19	Cook County SW Cook County Trucking Study	UB6R(542)	\$112,000
D77	HPR-66-054-19	Cook County Transit Plan	TE90(130)	\$30,000
D78	HPR-66-055-19	Danville MPO Freight Study	7HDZ(456)	\$40,000
D79	HPR-66-056-19	Dubuque MPO IEI Barge Expansion Feasibility Study	40FA(920)	\$85,000
D80	HPR-66-057-19	St. Louis MPO Illinois Great Streets Planning	QLUE(009)	\$156,515
D81	HPR-66-058-19	Fayette County GIS Initiative	32CC(807)	\$100,000
D82	HPR-66-059-19	Forest Preserve Dist. Cook County Trail System Inventory	MQG7(960)	\$100,000
D83	HPR-66-060-19	Carbondale Small Structure Inventory	7VGK(978)	\$150,000
D84	HPR-66-061-19	Carbondale MPO Workforce Assess to Work Transit Study	KV3Y(626)	\$53,000
D85	HPR-66-062-19	Greater Peoria Mass Transit Planning Administrator	V6EK(223)	\$196,000
D86	HPR-66-063-19	Bloomington MPO Vision Zero Action Plan	D9L0(890)	\$40,000
D87	HPR-66-064-19	Montgomery County Asset Mgmt Program	YW5T(300)	\$63,500
D88	HPR-66-065-19	Peoria MPO Roadway Asset Mgmt Plan	DGSI(871)	\$85,000
D89	HPR-66-066-19	Village of Sugar Grove Gordon Rd Regional Corridor Study	7T8H(029)	\$100,000
D90	HPR-66-069-19	Regional Comp Transportation Infrastructure Plan for the Central Council's 15 communities	F0U3(001)	\$100,000
D91	HPR-66-067-19	Will County Joliet Intermodal Transportation Master Plan	C4TL(904)	\$200,000
D95	HPR-66-068-19	Springfield Police E-Crash Application	SYSX(405)	\$265,000
E03	HPR-66-076-19	Impact Meas At-Grade Crossings	7Y1K(227)	\$248,814
E04	HPR-66-077-19	Randolph Str Corridor Imp Study	CAPT(178)	\$550,000
E05	HPR-66-078-19	CMAP Truck Routing and Community Studies	S8LJ(787)	\$869,683
E06	HPR-66-079-19	Kane County Long Range Transportation Plan Update 2050 Modeling	DINA(841)	\$85,000

E07	HPR-66-080-19	McHenry County ADA Transition Plan	8926(686)	\$125,000
E08	HPR-66-081-19	METSI	5ZMU(898)	\$700,000
E09	HPR-66-082-19	Vision Zero South Side	MNLZ(630)	\$170,000
			Total	\$8,787,870

<u>Function Number</u>	<u>Grantee Organization</u>	<u>Project Title</u>	<u>Description of Project</u>	<u>2019 Total Cost</u>	<u>2019 Federal Cost</u>
D55	Metropolitan Mayors Caucus	Planning Study & Municipal Fleet Assessment for Alternative Fuel Solutions	The Metropolitan Mayors Caucus will complete a study that will lead to cleaner, more efficient public fleets through collaboration and innovative solutions. The results are intended to also benefit public and private fleet owners and individual alternative fuel vehicle owners in the region. Green Ways 2 Go (GW2G) is the Caucus' lead technical partner for the study.	\$246,000	\$196,800

2020 Total Cost	2020 Federal Cost
\$200,000	\$160,000

<u>Function Number</u>	<u>Grantee Organization</u>	<u>Project Title</u>	<u>Description of Project</u>	<u>2019 Total Cost</u>	<u>2019 Federal Cost</u>
D56	Region 1 Planning Council (R1PC)	Rockford Mass Transit District (RMTD) Comprehensive Mobility Analysis	The Rockford Mass Transit District (RMTD) regularly strives to improve its offered transportation services to best meet residents' needs. While small needs may be addressed immediately, limited funding for large-scale transit projects generates an increasing level of planning and preparation. Crucial to the success of these efforts is having the data and tools available to not only maximize the efficiency of the transit system, but to keep up with an ever-evolving transportation culture. It is the goal of RMTD and the Region 1 Planning Council (R1PC) to fulfill this role by conducting a Comprehensive Mobility Analysis for RMTD's service area.	\$338,375	\$270,700

Function Number	Grantee Organization	Project Title	Description of Project	2019 Total Cost	2019 Federal Cost
D57	Springfield-Sangamon County Regional Planning Commission	Couple LEAM & REIM Models	<p>The funding will advance the comprehensive planning efforts and transportation planning capacity by allowing it to:</p> <ul style="list-style-type: none"> • Couple the previously developed functionalities of the Land Use Evolution and Impact Assessment Model (LEAM) and the Regional Economic Input-Output Models (REIM) systems to formulate scenarios using various economic data, and link the data outputs by industry sectors to a visual land use map to identify how the changes in the economics of a region can impact land use and transportation systems. • Provide additional staff support to collect data necessary to expand, maintain and manage the models to improve sustainable economic development efforts and sustainable transportation. 	\$39,317	\$31,454

2020 Total Cost	2020 Federal Cost
\$55,043	\$44,034

Function Number	Grantee Organization	Project Title	Description of Project	2019 Total Cost	2019 Federal Cost
D58	Tri-County Regional Planning Commission	Central Illinois Digital Aerial Photography Project	The Tri-County Regional Planning Commission, in coordination with our local government partners (consisting of the City of Peoria, Logan County, Peoria County, Tazewell County, Woodford County and the Greater Peoria Sanitary District) will complete a digital orthophotography acquisition project in the Spring of 2019 for Peoria, Tazewell, Woodford, and Logan Counties. These units of government have successfully collaborated in the past on similar projects. The project will use a qualified aerial photography vendor which will be responsible for all technical aspects of the project. The project will result in a deliverable of region-wide color digital ortho-rectified images with a ground pixel resolution of 0.5 feet (1" =100' scale) covering approximately 2,450 square miles.	\$150,000	\$120,000

2020 Total Cost	2020 Federal Cost
\$55,043	\$44,034

<u>Function Number</u>	<u>Grantee Organization</u>	<u>Project Title</u>	<u>Description of Project</u>	<u>2019 Total Cost</u>	<u>2019 Federal Cost</u>
D59	City of Centralia	Centralia Railroad Consolidation	The consolidation of the Norfolk Southern Railway (NS) with the Burlington Northern Santa Fe Railway (BNSF) on the south side of Centralia from approximately E. 14th Street to a point south of the US Route 51 grade separation where the NS alignment will turn east toward the Village of Walnut Hill where it will reconnect with the existing NS alignment heading southeast. This project will study the consolidation and realignment to prepare for the removal of 4 highway-rail grade crossings which essentially cut the bottom 1/3 of the City of Centralia off. Immediately, west of US Route 51 there is a 10-mph railroad curve which causes extensive delays to US 51 traffic. When a NS train blocks the crossings, a typical highway delay of 10 to 20 minutes per train occurs with an occasional 40-minute delay. From the IDOT bottleneck maps there is approximately 3369 hours of delay for both northbound and southbound US 51. All freight movement between Interstate 64 and areas north of the US 51 crossings, including the Centralia Municipal Airport are essentially cut off during these significant delay periods. Currently all emergency services, including the hospital, ambulance service, police, and fire departments, are located on the north side of these grade crossings.	\$60,000	\$48,000

Function Number	Grantee Organization	Project Title	Description of Project	2019 Total Cost	2019 Federal Cost
D60	Bi-State Development - St. Louis Regional Freightway	Illinois/Missouri - Modeling Freight Flows and Visualizing System Performance	The St. Louis Regional Freightway is a maturing multimodal information gateway that will use these funds to improve their analytical capabilities by collecting and analyzing data to characterize movements of freight related shipments within the Bi-State Region of Illinois and Missouri. The St. Louis Freightways needs enduring analytic capabilities to support performance-based planning and programming over an extended time horizon. Modeling and visualizing rail freight traffic in the region with respect to desired system performance benchmarks will provide data-driven evidence to prompt investment and economic development. The initial scope of this applied research is directly linked to agribusiness freight flows and is focused on soybean exports as the first use-case.	\$240,000	\$192,000

2020 Total Cost	2020 Federal Cost	2021 Total Cost	2021 Federal Cost
\$240,000	\$192,000	\$240,000	\$192,000

<u>Function Number</u>	<u>Grantee Organization</u>	<u>Project Title</u>	<u>Description of Project</u>	<u>2019 Total Cost</u>	<u>2019 Federal Cost</u>
D61	Bi-State Regional Commission	Quad Cities Mississippi River Rail Bridges Alternatives Analysis	A transportation planning consultant will be secured to analyze the viable options available to rehabilitate or replace the Mississippi River rail bridges in the Quad Cities. The alternatives analysis would include review of previous planning efforts, determine existing conditions and future demand, define a conceptual level alternative for rehabilitation or replacement, and suggest goals and objectives for the freight and passenger rail efficiencies related to economic vitality, livability, mobility, durability/resiliency and stewardship. The analysis would provide evaluation criteria based on consideration of engineering concepts, environment, transportation and range of cost estimates for alternatives and recommendations to facilitate mobility and commerce between the states.	\$100,000	\$80,000

<u>Function Number</u>	<u>Grantee Organization</u>	<u>Project Title</u>	<u>Description of Project</u>	<u>2019 Total Cost</u>	<u>2019 Federal Cost</u>
D62	Bi-State Regional Commission	Illinois Quad Cities Illinois 92 Corridor Study	A transportation planning consultant will be secured to analyze the corridor. The steering committee will include the four cities, Illinois DOT, and MetroLINK. Other stakeholders will be determined as part of the study development process. The corridor study will include review of previous planning efforts, determine existing conditions and future demand, define conceptual level alternatives for rehabilitation or replacement, and suggest goals and objectives for the corridor related to economic vitality, livability, mobility, durability/resiliency and stewardship. The analysis will provide evaluation criteria based on consideration of engineering concepts, environment, transportation and range of cost estimates for alternatives and recommendations to facilitate mobility and commerce between the communities.	\$300,000	\$240,000

<u>Function Number</u>	<u>Grantee Organization</u>	<u>Project Title</u>	<u>Description of Project</u>	<u>2019 Total Cost</u>	<u>2019 Federal Cost</u>
D63	Champaign County Regional Planning Commission	Activating the Long Range Transportation Plan (LRTP): Web-based Planning, Public Involvement, and Data Collection	This funding includes two primary avenues for activating the long range transportation plan. Make the web the primary medium for presenting plan content and collecting public input to create a more open and efficient planning process and expand and institutionalize the agency's capacity to collect essential and ongoing pedestrian and bicyclist data in the Metropolitan Planning Area (MPA) to support performance based planning and increase the utility of the transportation modeling tools for all modes.	\$110,000	\$88,000

2020 Total Cost	2020 Federal Cost
\$70,870	\$56,696

<u>Function Number</u>	<u>Grantee Organization</u>	<u>Project Title</u>	<u>Description of Project</u>	<u>2019 Total Cost</u>	<u>2019 Federal Cost</u>
D64	Champaign County Regional Planning Commission	Development of Champaign County Safety Forecasting Tool	The proposed project will develop a safety forecasting tool using the steps from the Highway Safety Manual (HSM) for estimating future crashes which requires future annual average daily traffic (AADT) estimated using the regional travel demand model (TDM). This tool will provide one platform to select and prioritize projects based on safety, guide corridor safety enhancements and intersection safety studies, and assist in conducting benefit cost analyses of future projects. It will be a data-driven tool which will require geometric information of intersections and corridor segments for developing the safety performance function (SPFs) from the HSM to estimate future crashes. This project anticipates using IDOT's state-specific safety performance functions (SPFs) for the network screening process to estimate future crashes with the Champaign County Travel Demand Model.	\$60,000	\$48,000

2020 Total Cost	2020 Federal Cost	2021 Total Cost	2021 Federal Cost
\$85,000	\$68,000	\$39,000	\$31,200

<u>Function Number</u>	<u>Grantee Organization</u>	<u>Project Title</u>	<u>Description of Project</u>	<u>2019 Total Cost</u>	<u>2019 Federal Cost</u>
D65	Champaign County Regional Planning Commission	Urbana Kickapoo Rail Trail Extension Planning Study	This project aims to evaluate the feasibility of providing a bicycle and pedestrian facility that extends the Kickapoo Rail Trail (KRT) from its current terminus in East Urbana near Weaver Park (Main Street) to Lincoln Avenue in Urbana. The primary purpose of the bicycle and pedestrian facility extension is to provide a safe, convenient, and functional off-street transportation facility connecting Kickapoo Rail Trail users to East Urbana neighborhoods and employers, the Champaign-Urbana Mass Transit District (CUMTD), Downtown Urbana, the Boneyard Crossing greenway, Leal Park, and Carle Foundation Hospital.	\$65,000	\$52,000

2020 Total Cost	2020 Federal Cost
\$60,095	\$48,075

Function Number	Grantee Organization	Project Title	Description of Project	2019 Total Cost	2019 Federal Cost
D66	Champaign County Regional Planning Commission	Illinois Modeling Users Group (ILMUG): Building IL MPOs travel demand models and providing technical support for IL MPOS	This project includes allocating a set number of hours per year for developing a 4-step travel demand model for the Kankakee Area Transportation Study (KATS), continuation of the research and development of best practices in travel demand modeling, providing training and on-site technical support to the ILMPOs particularly to the Bloomington-Normal, Dekalb-Sycamore and Kankakee MPOs and coordination of activities related to travel demand modeling with similar groups and the Illinois MPOs, dissemination of information to support the travel demand-modeling program in Illinois, and updating and enhancing the ILMUG website.	\$80,000	\$64,000

2020 Total Cost	2020 Federal Cost	2021 Total Cost	2021 Federal Cost
\$100,000	\$80,000	\$31,422	\$25,138

<u>Function Number</u>	<u>Grantee Organization</u>	<u>Project Title</u>	<u>Description of Project</u>	<u>2019 Total Cost</u>	<u>2019 Federal Cost</u>
D67	Chicago Department of Transportation (CDOT)	Complex Intersections Framework Plan	This study will create a framework plan that identifies, classifies, prioritizes, and develops improvement concepts for the universe of relevant intersection locations throughout the City. For each intersection, the study will describe the existing complexities, modes affected, and potential benefits of modifications and generate detailed concept plans for improvements that would address these issues. These plans will reflect guidance from CDOT's Complete Streets Guidelines, Vision Zero Plan, and other related resources while also acknowledging existing and potential future nearby land use, which drives travel demand and modal orientation. This will be a 4-year study with FY 22 estimated at \$125,000.	\$375,000	\$300,000

2020 Total Cost	2020 Federal Cost	2021 Total Cost	2021 Federal Cost
\$375,000	\$300,000	\$375,000	\$300,000

<u>Function Number</u>	<u>Grantee Organization</u>	<u>Project Title</u>	<u>Description of Project</u>	<u>2019 Total Cost</u>	<u>2019 Federal Cost</u>
D68	Chicago Department of Transportation (CDOT)	Economic Impacts of Livable Street Improvements to Commercial Corridors	This study will determine how the economic health of a neighborhood is impacted because of a Livable Street project. Looking at recently completed projects, CDOT will examine property values, sales data, retail vacancy rates, and other economic indicators to quantify the amount of private money leveraged by a publicly funded Livable Street project. This will be a 4-year study with FY 22 estimated at \$25,000.	\$75,000	\$60,000

2020 Total Cost	2020 Federal Cost	2021 Total Cost	2021 Federal Cost
\$75,000	\$60,000	\$75,000	\$60,000

Function Number	Grantee Organization	Project Title	Description of Project	2019 Total Cost	2019 Federal Cost
D69	Chicago Metropolitan Agency for Planning (CMAP)	Local Technical Assistance Program Support	Following adoption of GO TO 2040 in 2010, CMAP initiated the Local Technical Assistance (LTA) program, which provides staff and contract assistance to communities to do local planning that is consistent with the long-range regional plan and integrates transportation elements into local planning efforts. The LTA program involves working directly with a community or group of communities on a product that is customized for their use, has a specific audience, and is geographically limited. Most LTA projects integrate transportation elements into local plans or the inclusion of recommendations that influence the performance of the transportation system. As is well known, land use and transportation are inextricably linked and influence the performance and success of the other. This will be a 4-year study with FY 22 estimated at \$100,000.	\$150,000	\$120,000

2020 Total Cost	2020 Federal Cost	2021 Total Cost	2021 Federal Cost
\$150,000	\$120,000	\$150,000	\$120,000

<u>Function Number</u>	<u>Grantee Organization</u>	<u>Project Title</u>	<u>Description of Project</u>	<u>2019 Total Cost</u>	<u>2019 Federal Cost</u>
D70	Chicago Metropolitan Agency for Planning (CMAP)	Illinois International Port District (IIPD) Master Plan	CMAP will collaborate with IIPD on a master plan effort aimed at developing a cohesive vision for potential transportation and land use improvements related to IIPD operations and its position within the fabric of the southeast side of Chicago, particularly the contiguous Chicago Community Areas. This effort is meant to connect and build upon previous efforts and analysis conducted by the IIPD and partners.	\$70,000	\$56,000

2020 Total Cost	2020 Federal Cost	2021 Total Cost	2021 Federal Cost
\$143,000	\$114,400	\$142,998	\$114,398

<u>Function Number</u>	<u>Grantee Organization</u>	<u>Project Title</u>	<u>Description of Project</u>	<u>2019 Total Cost</u>	<u>2019 Federal Cost</u>
D71	Chicago Metropolitan Agency for Planning (CMAP)	Pavement Management Plans for Chicago Local Agencies	This project will provide technical assistance to develop pavement management plans (PMPs) for local units of government in the CMAP region. PMPs will give participating local agencies an understanding of the importance and types of pavement preservation, documentation of the current condition of pavement, scenarios evaluating the cost to meet different network-level pavement conditions, and a recommended capital plan that emphasizes pavement preservation treatments. CMAP has already established a pilot program to offer this service using a relatively small budget from its Unified Work Program operating funds. CMAP has also identified interested communities to participate in the program via a call for projects held in January-February 2018, which resulted in a total of 69 project applicants. However, UWP funding allocated for the pilot program will only allow for 8-12 communities to be selected.	\$666,666	\$533,333
2020 Total Cost	2020 Federal Cost	2021 Total Cost	2021 Federal Cost		
\$666,666	\$533,333	\$666,666	\$533,333		

<u>Function Number</u>	<u>Grantee Organization</u>	<u>Project Title</u>	<u>Description of Project</u>	<u>2019 Total Cost</u>	<u>2019 Federal Cost</u>
D72	Chicago Transit Authority (CTA)	Blue Line Core Capacity Study	CTA will use the funding to conduct planning, conceptual design, and public outreach efforts that will allow for the development of a Blue Line Core Capacity Program. Funds received will be used to prepare the required materials to request entry into the Project Development phase of the Federal Transit Administration's (FTA) Capital Investment Grant Program as a Core Capacity project. The project is ready to begin and is scalable. This planning effort will identify a program of recommended improvements that will allow a 10% capacity increase along the Blue Line O'Hare branch. The final deliverable will package technical memoranda and other documentation from the study into a single, comprehensive report, which will position CTA to apply for federal funds through the FTA's Capital Investment Grant program, as a Core Capacity project.	\$408,000	\$326,400

2020 Total Cost	2020 Federal Cost
\$327,000	\$261,600

<u>Function Number</u>	<u>Grantee Organization</u>	<u>Project Title</u>	<u>Description of Project</u>	<u>2019 Total Cost</u>	<u>2019 Federal Cost</u>
D73	Chicago Transit Authority (CTA)	Asset Management System Enhancements	This project will significantly enhance the tools and data used by CTA to plan maintenance and renewal of its infrastructure assets, including track, structures, signals, and traction power systems. It will also leverage the investments that CTA has made in recent years to migrate its work order tracking and asset inventory into an Enterprise Asset Management System (EAM). 1. A fully deployed spatial analysis tool with mobile-access to CTA's Enterprise Asset Management System, for use by CTA's 25 Power and Way maintenance coordinators; 2. Development of asset data standards that ensure consistency of data entry and interoperability between systems; and 3. The addition of essential lifecycle and condition attributes to key infrastructure assets in the EAM, along with rapid linkage between relevant content stored in CTA's new document management system (e.g. drawings, specifications) with EAM asset records.	\$500,000	\$400,000

2020 Total Cost	2020 Federal Cost
\$475,000	\$380,000

<u>Function Number</u>	<u>Grantee Organization</u>	<u>Project Title</u>	<u>Description of Project</u>	<u>2019 Total Cost</u>	<u>2019 Federal Cost</u>
D74	City of Ottawa	Columbus Street Rail Crossing Alternative Feasibility Study	Illinois Railway moves multiple trains with small numbers of sand cars each, from US Silica on the outskirts of town to the switchyard in the center of the city between Columbus and Champlain Streets. There they are assembled into full length trains. The multiple train movements and then the lengthy switching creates significant traffic delay. Traffic backups extend for a mile in both directions with the wait often over 20 minutes. This has even resulted in emergency responders being required to call the railroad to break up the train to allow the passage of an ambulance or fire truck. The study will consist of quantifying the impacts of the delays, developing viable alternatives, calculating opinions of probable costs and life cycle, collecting public input, coordinating with project stakeholders, quantifying benefits of alternatives, and providing a recommended alternative.	\$30,000	\$24,000

2020 Total Cost	2020 Federal Cost
\$45,000	\$36,000

<u>Function Number</u>	<u>Grantee Organization</u>	<u>Project Title</u>	<u>Description of Project</u>	<u>2019 Total Cost</u>	<u>2019 Federal Cost</u>
D75	City of Quincy, IL	Quincy Regional Transportation Plan	A consultant will be hired to prepare the Quincy Regional Transportation Plan (QRTP). The plan shall identify major regionally beneficial transportation projects that can be targeted for federal, state, and local funding in the next 25 years. The geographical limit of the QRTP shall be approximately one and a half miles from the current City of Quincy limits. The plan shall expand on the recommendations brought forth in the "Quincy Next" strategic plan adopted in 2018 and specifically address the new location for the US Route 24 Bridge carrying eastbound traffic from Missouri into the City's Central Business District (CBD).	\$100,000	\$80,000

2020 Total Cost	2020 Federal Cost
\$50,000	\$40,000

<u>Function Number</u>	<u>Grantee Organization</u>	<u>Project Title</u>	<u>Description of Project</u>	<u>2019 Total Cost</u>	<u>2019 Federal Cost</u>
D76	Cook County Department of Transportation and Highways	SW Cook County Truck Study	This project will investigate truck mobility and investment needs in southwest Cook County, one of the major industrial and logistics clusters in northeastern Illinois. The project will apply the conceptual truck routing framework developed in CMAP's O'Hare Subregional Truck Routing Study to these communities, and will expand upon that work by completing detailed needs analyses. The project scope includes (1) the identification of existing locally designated truck routes and truck restrictions defined in municipal ordinances, (2) quantitative and qualitative existing conditions analyses, and (3) classification of roadway segments into tiers based on truck volumes and truck access needs, with policy and capital investment recommendations developed for each tier. While the focus of the project will be on the trucking system, highway connections to rail, air, and port facilities will be important considerations.	\$112,000	\$89,600
2020 Total Cost	2020 Federal Cost				
\$168,000	\$134,400				

<u>Function Number</u>	<u>Grantee Organization</u>	<u>Project Title</u>	<u>Description of Project</u>	<u>2019 Total Cost</u>	<u>2019 Federal Cost</u>
D77	Cook County Department of Transportation and Highways	Cook County Transit Plan	The Cook County Transit Plan will assess current and proposed public transportation services as well as explore alternates and the potential of new services and technologies to improve service to residents and businesses. This would differ from RTA's recently release Invest in Transit plan which is little more than an aggregation of Service Board plans with no independent assessment by the RTA. One example of the objectivity that Cook County will bring to its transit plan will be its assessment of the impact that the Red Ahead project will have on existing Metra Electric and NICTD's South Shore service and whether similar service can be provided by upgrading existing service instead of building an entirely new facility.	\$30,000	\$24,000

2020 Total Cost	2020 Federal Cost	2021 Total Cost	2021 Federal Cost
\$350,000	\$280,000	\$107,500	\$86,000

Function Number	Grantee Organization	Project Title	Description of Project	2019 Total Cost	2019 Federal Cost
D78	Danville Area Transportation Study	Danville Freight Study	The City of Danville Freight Study will develop a comprehensive look at: preserving the existing transportation system, increasing connectivity between rail, highways, and potentially air, public and private sectors input on economic feasibility, size, and location of a potential facility, and identifying the improvements needed to cost effectively benefit constituents and support development. The final goal of the City of Danville Freight Study is to identify locations where investments in multi-modal infrastructure are economically feasible and encourage surrounding development and growth. The planning study will: seek to identify potential challenges to multi-modal development so that the community stakeholders can determine if and how to mitigate them.	\$40,000	\$32,000

2020 Total Cost	2020 Federal Cost
\$60,000	\$480,000

<u>Function Number</u>	<u>Grantee Organization</u>	<u>Project Title</u>	<u>Description of Project</u>	<u>2019 Total Cost</u>	<u>2019 Federal Cost</u>
D79	East Central Intergovernmental Association	IEI Barge Expansion Planning & Feasibility study	ECIA will conduct a planning and feasibility study for expansion of IEI Barge Services' existing port facility on the Mississippi River in Jo Daviess County, Illinois that will allow a broad range of higher-value ro-ro, break-bulk, and project cargo. The 120-acre site features a 20-acre protected harbor off the main channel of the upper Mississippi River at mile 574.5. The facility is currently capable of handling dry bulk products between any combination of barge, rail or truck. IEI has 150,000 square feet of inside dry bulk storage, as well as room to develop additional facilities. IEI is located on U.S. Highway 20 just three miles east of East Dubuque. The terminal also has unit train rail access to Canadian National Railway.	\$85,000	\$68,000

2020 Total Cost	2020 Federal Cost
\$65,000	\$52,000

Function Number	Grantee Organization	Project Title	Description of Project	2019 Total Cost	2019 Federal Cost
D80	East West Gateway Council of Governments	Illinois Great Streets Planning	This project will conduct a Great Streets Initiative (the Initiative) planning project on the Illinois side of the St. Louis region. A consultant will be hired to conduct an examination/analysis of existing conditions (a professional assessment of the study area relevant history, infrastructure, market, leadership, land uses, and apparent priorities and goals to establish a baseline to inform the community visioning session). The work and sequence is mapped out for the community, and they are prepared to opportunistically seek funding and partnerships that occasionally surface.	\$156,515	\$125,212

2020 Total Cost	2020 Federal Cost
\$442,841	\$354,273

<u>Function Number</u>	<u>Grantee Organization</u>	<u>Project Title</u>	<u>Description of Project</u>	<u>2019 Total Cost</u>	<u>2019 Federal Cost</u>
D81	Fayette, County of	Fayette County Culvert GIS Initiative	The proposed project will consist of collecting the size, type, condition and GPS location of the existing cross road culverts located within Fayette County. This information will then be incorporated into the County's GIS, where it can then be utilized by the County and Townships to program the replacement of culverts in the most need.	\$100,000	\$80,000
D82	Forest Preserve District of Cook County	Forest Preserves of Cook County's Trail System Inventory and Evaluation	The Forest Preserves of Cook County proposes to conduct an inventory and evaluation of its more than 150 miles of paved trails and 200 miles of unpaved trails. This extensive system of regional trails provides transportation choices and enhances the livability of diverse communities in the state's most densely populated county.	\$100,000	\$80,000
2020 Total Cost		2020 Federal Cost			
\$200,000		\$160,000			

<u>Function Number</u>	<u>Grantee Organization</u>	<u>Project Title</u>	<u>Description of Project</u>	<u>2019 Total Cost</u>	<u>2019 Federal Cost</u>
D83	Greater Egypt Regional Planning and Development Commission	Small Structure Inventory	The project will consist of inspection and collection of data for small structures in Franklin, Jackson, Jefferson, Perry and Williamson Counties. An excel spread sheet listing each structure to be inspected will be provided to the consultant. The spreadsheet will also include the structure type and size from IDOT's current inventory as well as the Key Route, station, Road Name and structure coordinates. The consultant will prepare a separate excel spreadsheets for each county that will display the data fields in an easily readable format for field use. These spreadsheets will group the data by Key Route, Road Name and Station for convenient field use. The consultant will also generate new GIS shapefiles containing the original and the collected data. The new shapefiles will be provided to Greater Egypt by electronic media.	\$150,000	\$120,000

<u>Function Number</u>	<u>Grantee Organization</u>	<u>Project Title</u>	<u>Description of Project</u>	<u>2019 Total Cost</u>	<u>2019 Federal Cost</u>
D84	Greater Egypt Regional Planning and Development Commission	Workforce Access to Work Transit Study	This study seeks a viable solution to addressing the need to get more residents reliably to work using public transportation. Specifically, this study will: <ul style="list-style-type: none"> • Identify workforce access to work requirements, employer locations and their area of recruitment, other uses such as medical that are needed and not being addressed. • Inventory existing daily service across the area including deadhead movements and times. • Examine existing areas of common travel or potential transfer points. • Identify any existing public land, right of way, etc. that could be used for passenger amenities for transit transfer or rideshare parking, etc. • Create gap analysis on out of county or multi-county service requirements for all purposes. • Make recommendations for new investment using projections of riders anticipated. • Use the data collected to determine logical transfer locations to enhance connectivity for existing transit system services and for projected new need. • Make data-based suggestions for appropriate amenities at suggested transfer nodes. 	\$53,000	\$42,400

<u>Function Number</u>	<u>Grantee Organization</u>	<u>Project Title</u>	<u>Description of Project</u>	<u>2019 Total Cost</u>	<u>2019 Federal Cost</u>
D85	Greater Peoria Mass Transit District	Comprehensive Transit Operational Analysis	The Greater Peoria Mass Transit District (GPMTD) will to conduct a Comprehensive Transit Operational Analysis that will evaluate the full benefits and costs of GPMTD's service. GPMTD will conduct an in-depth analysis of existing routes along with recommendations for dealing with steadily increasing ridership, expanding community boundaries, and potential new ridership generators. GPMTD wants to optimize transit benefits by increasing system efficiency, increasing ridership, and creating more transit oriented land use patterns. The GPMTD also wants to identify various categories of impacts and how to measure them.	\$196,000	\$156,800

<u>Function Number</u>	<u>Grantee Organization</u>	<u>Project Title</u>	<u>Description of Project</u>	<u>2019 Total Cost</u>	<u>2019 Federal Cost</u>
D86	McLean County Regional Planning Commission	Vision Zero Action Plan	This study will focus on the development of an action plan to guide future projects aimed at improved transportation system safety, specifically street, road and trail projects at locations with the highest historical levels of crashes, particularly those resulting in fatalities (K crashes) or serious injury (A crashes).	\$40,000	\$32,000
2020 Total Cost		2020 Federal Cost			
\$50,000		\$40,000			

<u>Function Number</u>	<u>Grantee Organization</u>	<u>Project Title</u>	<u>Description of Project</u>	<u>2019 Total Cost</u>	<u>2019 Federal Cost</u>
D87	Montgomery County Highway Department	Montgomery County Highway Department Asset Management Program	This project will result in an asset management program that will incorporate existing and new inventories of county assets and allow the flexibility for additional inventories to be completed in the future and seamlessly added to the system. A public web page will be created to allow for interactive feedback from the public, and an online Infrastructure Operations Dashboard will be developed to be used by county staff for planning purposes. Additionally, the project will provide the equipment and software necessary to allow the county to keep the inventories up to date and to utilize the data to develop and update their long-range and short-range transportation plans.	\$63,500	\$50,800

<u>Function Number</u>	<u>Grantee Organization</u>	<u>Project Title</u>	<u>Description of Project</u>	<u>2019 Total Cost</u>	<u>2019 Federal Cost</u>
D88	Tri-County Regional Planning Commission	Tri-County Communities Roadway Asset Management	This project will assist communities in shifting the common practice of worst-first to real management of their roads and Right of Way (ROW) assets. When implemented correctly, asset management and life cycle planning can enable more efficient use of increasingly scarce funds. The scope of this project will provide for the collection and processing of pavement condition data on the non-Surface Transportation Urban (STU)-eligible roads in a community, and/or Right-of-Way assets. Data collected in this project will be integrated into the regional pavement management system and be made available to each participating community. Final Deliverables of this project include the uploading of data into GIS and Micropaver software, software training, GIS shapefiles*, excel spreadsheets, and a final report by the consultant.	\$85,000	\$68,000

2020 Total Cost	2020 Federal Cost
\$150,000	\$120,000

<u>Function Number</u>	<u>Grantee Organization</u>	<u>Project Title</u>	<u>Description of Project</u>	<u>2019 Total Cost</u>	<u>2019 Federal Cost</u>
D89	Village of Sugar Grove	Gordon Road Regional Corridor Study	The main north-south roadways, IL Route 47 (16,000 to 21,900 Average Daily Traffic (ADT) and Orchard Road (17,200 to 30,300 ADT), experience significant volumes of traffic which will only continue to increase with time. One corridor that was identified as another potential north-south road in the region is Gordon Road. Currently, Gordon Road south terminus is located approximately 3,100 feet north of Galena Road (in Montgomery) and the north terminus is located just south of the intersection with Julie Lane, approximately 6,800 feet south of US 30 (in Montgomery). The goal for this corridor would be to connect to Cannonball Trail on the south (to IL 47 in Yorkville) and Galena Road on the north (to I-88 Tollway in Sugar Grove). Another goal for this corridor is to create a logical terminus in Sugar Grove for potential Metra (commuter) Rail Service, bus service west of Aurora, and or a Park-and-Ride facility.	\$100,000	\$80,000

<u>Function Number</u>	<u>Grantee Organization</u>	<u>Project Title</u>	<u>Description of Project</u>	<u>2019 Total Cost</u>	<u>2019 Federal Cost</u>
D90	West Central Municipal Conference	Regional Comprehensive Transportation Infrastructure Plan	<p>A consultant will be hired to reinforce and enhance Central Council's ongoing cooperative, continuous and comprehensive framework for making transportation investment decisions across the 15-member municipalities of the Central Council. These municipalities are: Berwyn, Brookfield, Cicero, Countryside, Forest View, Hodgkin, Indian Head Park, LaGrange, LaGrange Park, Lyons, McCook, Riverside, Stickney, Summit, and Western Springs. This project is needed in the Central Council Region because there is no cohesive regional plan. Individual communities have individual plans, individual organizations have specific plans, there is no plan that combines these plans and needs into a regional study. The results will include both well-defined regional projects and individual municipal projects with regional impact, focusing on long-term regional transportation priorities that municipalities and the Council will work on together.</p>	\$100,000	\$80,000

<u>Function Number</u>	<u>Grantee Organization</u>	<u>Project Title</u>	<u>Description of Project</u>	<u>2019 Total Cost</u>	<u>2019 Federal Cost</u>
D91	Will County or City of Joliet	Joliet Intermodal Transportation Master Plan	The Elwood/Joliet cluster includes Laraway Road to the south edge of the CenterPoint Intermodal and between I-55/Des Plaines River and Illinois 53. Because of the rapid growth within this cluster and the projected future growth in the cluster as identified in the Freight Plan, Joliet and Will County are joining together for the development of a Transportation Master Plan for an area within the Elwood/Joliet Cluster with some of the greatest bottleneck, safety, and mobility challenges. The purpose of preparing the Transportation Master Plan is to identify the transportation needs for the current level of commerce in the area and for the future buildout as identified in the Freight Plan. The goal is to integrate transportation investments to produce on-going economic benefit, improve the safety of the highway system and create a more efficient flow of freight in the region.	\$200,000	\$160,000
2020 Total Cost		2020 Federal Cost			
\$50,000		\$40,000			

<u>Function Number</u>	<u>Grantee Organization</u>	<u>Project Title</u>	<u>Description of Project</u>	<u>2019 Total Cost</u>	<u>2019 Federal Cost</u>
D95	Springfield Police Department (SPD)	Springfield Police Department E-Crash Application	For SPD to develop an e-crash application to move towards electronic reporting, SPD must pay \$265,000 plus an annual fee of \$40,000 to Tyler Tech. Tyler Tech is a vendor that developed Springfield's CADD system. Tyler Tech is one of IDOT's approved third party, XML vendors. Springfield is interested in an e-crash application, but it doesn't want to have a separate application from their CADD system. SPD doesn't want to use multiple systems to run reports when they can generate a report in one system.	\$265,000	\$212,000

<u>Function Number</u>	<u>Grantee Organization</u>	<u>Project Title</u>	<u>Description of Project</u>	<u>2019 Total Cost</u>	<u>2019 Federal Cost</u>
E03	The University of Illinois	Impact measurement for At-Grade Crossings	The project objective is to develop an at-grade crossing measurement system using the “Array of Things” (AoT) urban sensing and image analysis platform that the University of Chicago and Argonne National Laboratory are installing throughout the City of Chicago and in a growing number of other cities. Devices will be installed at 4-6 at-grade rail crossings (selected by CMAP and CDOT; see supplemental document) to provide measurements including vibration, noise, air quality, as well as crossing activity and impact on vehicle traffic. All data from the devices is published openly and freely, however this project will also include a customized interface to adapt the data for integration into CMAP and CDOT analytics platforms.	\$249,000	\$199,200

<u>Function Number</u>	<u>Grantee Organization</u>	<u>Project Title</u>	<u>Description of Project</u>	<u>2019 Total Cost</u>	<u>2019 Federal Cost</u>
E04	Chicago Department of Transportation	Randolph Street Corridor Improvement Study	The project will be a corridor improvement study to develop a recommended plan for the elimination of the existing frontage roads and medians on West Randolph Street from North Des Plaines Street to North Ogden Avenue. The study will consider all modes of transportation, adjacent land uses, opportunities for new public spaces, and the connecting street network in order to develop concept design alternatives with associated cost estimates. A final preferred concept will be determined.	\$550,000	\$440,000

<u>Function Number</u>	<u>Grantee Organization</u>	<u>Project Title</u>	<u>Description of Project</u>	<u>2019 Total Cost</u>	<u>2019 Federal Cost</u>
E05	Chicago Metropolitan Agency for Planning	CMAP Truck Routing and Community Studies	CMAP will use these funds for three planning studies focused on improving truck routing across jurisdictions, in addition to addressing local permitting processes, delivery management, and/or community impacts as appropriate to each study. CMAP's Regional Strategic Freight Direction (RSFD) recommends that local jurisdictions coordinate routes and restrictions to both increase efficiency of goods movement and address policy concerns such as local congestion, safety, and quality of life. To highlight where such studies could occur, the RSFD identified truck bottlenecks in the region as well as areas where local restrictions conflict. These have strong overlap with the region's six freight-supportive land use clusters	\$869,683	\$695,746

<u>Function Number</u>	<u>Grantee Organization</u>	<u>Project Title</u>	<u>Description of Project</u>	<u>2019 Total Cost</u>	<u>2019 Federal Cost</u>
E06	Kane County	Long Range Transportation Plan Update 2050 Modeling	Update sub-zone level socioeconomic data to compare updated 2040 with ON TO 2050 datasets for Kane County. Update GIS graphic and evaluate changes to assess data inputs for the Travel demand model. 2. Update socioeconomic data inputs and perform travel demand model runs for 2050 scenario. Evaluate changes in travel performance between 2040 update and ON TO 2050 scenario. This task will include updating both internal demand and external travel demand as part of the travel demand model update. 3. Using outputs from the travel demand model, update deficiencies and travel performance for the roadway system. 4.Reconcile differences between the 2040 and 2050 roadway deficiencies and identify proposed roadway projects for the Kane County 2050 Long Range Transportation Plan. 5. Update project cost estimates to reflect changes for the 2050 LRTP projects. Update the travel demand model to test performance of the proposed 2050 KDOT LRTP projects to evaluate benefits compared to deficiencies.	\$85,000	\$68,000

<u>Function Number</u>	<u>Grantee Organization</u>	<u>Project Title</u>	<u>Description of Project</u>	<u>2019 Total Cost</u>	<u>2019 Federal Cost</u>
E07	McHenry County	McHenry County ADA Transition Plan	Funding will be used to procure professional services to create an Americans with Disabilities Act (ADA) Transition Plan for McHenry County.	\$125,000	\$100,000

E08	University of Illinois Chicago	Metropolitlan Transportation Support Initiative (METSI)	University will provide technical assistance to IDOT and local areas throughout Illinois on transportation efficiency, safety, traffic congestion, air quality, and economic development based on a task order basis.	\$700,000	\$560,000
-----	--------------------------------	---	---	-----------	-----------

2020 Total Cost	2020 Federal Cost
\$700,000	\$560,000

<u>Function Number</u>	<u>Grantee Organization</u>	<u>Project Title</u>	<u>Description of Project</u>	<u>2019 Total Cost</u>	<u>2019 Federal Cost</u>
E09	Chicago Department of Transportation	Vision Zero South Side	Vision Zero is Chicago's initiative to eliminate fatal and serious-injury traffic crashes by the year 2026. A multi-departmental Vision Zero Steering Committee led by the Mayor's Office and four Working Groups have identified goals and strategies to increase traffic safety, with a three-year Vision Zero Chicago Action Plan released in June 2017. This data-driven process established City priorities and identified the resources – and gaps in resources – to meet benchmark reduction goals for fatalities and serious injuries by 2020. This funding will allow us to ensure a strong community engagement process and production of a plan that lays out the community vision for traffic safety on the South Side.	\$170,000	\$136,000

Chapter Two – Metropolitan Planning Summary of Work

Metropolitan Planning Program Objectives

The major objective of the Metropolitan Planning Program is to produce transportation plans and programs for the state's metropolitan planning areas. The aim is to develop plans and programs through the cooperative process that ensures that the highest priority metropolitan needs are being addressed and that proposed investments are consistent with statewide policies and plans. Also, to develop planning to be more responsive to the needs of local decision-makers and citizens and adjusted to the realities of long term budget constraints in urbanized areas.

Anticipated Accomplishments for Fiscal Year 2019

A major effort will be made by the Department and the Metropolitan Planning Organization to provide planning projects which provide information that can be used by implanting agencies to make investment decisions. Significant objective for the Planning (PL) and FTA funds include:

- Preparation of a financially realistic Transportation Improvement Program (TIP)
(A TIP/air quality conformity finding in accordance with 40 CFR 51 will be addressed where applicable)
 - Transportation Plan
(Describing policies, strategies and facilities or proposed changes in facilities)
 - Certification
(Statement regarding conformance with federal regulations as per 23 CFR 450.334(a))
 - Performance Management
(Working with the State to set and monitor targets for safety, asset condition, and system performance)
- Unified Work Program
(Identifying the planning work to be conducted over the course of the fiscal year)
- Special studies addressing the transportation needs of minorities and the disadvantaged
 - Project Completion Report
 - Title VI Citizen Participation Report

Unified and Technical Planning Work Programs

The work programs delineating work activities to be performed in FY 2019 will be developed jointly by the MPO and participating agencies, transit authorities and the state. The work programs will include planning to be done by all agencies in the region and detail which agencies will be involved in each portion of the work programs. Funding will be provided by the Federal Highway Administration with FTA funds transferred from FTA to FHWA. In addition, the department has requested State Metropolitan Planning Appropriation funds for FY 2019 to

provide financial Assistance to the Chicago Metropolitan Agency for Planning for northeastern Illinois, the downstate metropolitan planning organizations and the state's rural planning agencies for comprehensive regional Planning purposes.

Marks Determination Table

ESTIMATED METROPOLITAN TRANSPORTATION PLANNING FUNDS									
APPORTIONMENT For the State Fiscal Year 2019									
									Date: 5/1/2018
A	B	C	D	E	J	K	M	N	P
2010 Census							SFY 2019 Total	Match	
Urbanized Areas	Population	%			SFY2019 Total	SFY 2019 Total	PL and FTA	Required	Total
			Base PL	Pop PL	PL	FTA			
Chicago	8,406,902	0.80390	70,000	13,412,347	13,810,856	4,136,391	17,947,247	4,486,812	22,434,058
St. Louis	479,562	0.04586	70,000	765,092	853,831	235,955	1,089,787	272,447	1,362,233
Champaign	146,798	0.01404	70,000	234,201	309,938	72,229	382,167	95,542	477,709
Bloomington	137,927	0.01319	70,000	220,048	295,438	67,863	363,301	90,825	454,127
Decatur	97,386	0.00931	70,000	155,369	229,175	47,915	277,090	69,273	346,363
Springfield	165,143	0.01579	70,000	263,469	339,922	81,255	421,177	105,294	526,471
Kankakee	85,409	0.00817	70,000	136,261	209,599	42,023	251,622	62,906	314,528
Dubuque	3,791	0.00036	4,000	6,048	10,196	1,860	12,056	3,014	15,070
South Beloit	18,968	0.00181	17,000	30,261	48,003	9,333	57,335	14,334	71,669
Peoria	274,599	0.02626	70,000	438,094	518,825	135,109	653,933	163,483	817,417
Rockford	304,316	0.02910	70,000	485,505	567,396	149,731	717,127	179,282	896,409
Rock Island	141,098	0.01349	70,000	225,107	300,621	69,423	370,044	92,511	462,555
Danville	54,404	0.00520	70,000	86,796	158,922	26,768	185,690	46,422	232,112
DeKalb	70,198	0.00671	70,000	111,994	184,737	34,539	219,276	54,819	274,095
Carbondale	70,697	0.00676	70,000	112,790	185,552	34,785	220,337	55,084	275,421
Cape Girardeau	385	0.00004	1,000	614	1,630	189	1,819	455	2,274
Total	10,457,583	1.00000	932,000	16,683,997	18,024,641	5,145,368	23,170,009	5,792,502	28,962,511
			FFY18						
			FHWA	17,615,997					
				(932,000)					
				16,683,997					

Match may be either state or local funds.

PL funds equal the apportionment of \$17,615,997 plus additional PL funds in the amount of \$408,644. Total \$18,024,641.

FTA funds equal the apportionment of \$4,956,198 plus additional FY 18 FTA funds already authorized in the amount of \$189,170. Total \$5,145,368.

Illinois Metropolitan Planning Organizations: Funding Summary by State and Federal Job Numbers

Function	APA STATE JOB NUMBER	Title	Federal Project Number	Federal PL Dollar Amount
P02	HPR-66-001-19	Bloomington	F0Y5(138)	\$295,438
B68	HPR-66-002-19	Cape Girardeau	39ES(582)	\$1,630
B67	HPR-66-003-19	Carbondale	GIGY(178)	\$185,552
P03	HPR-66-004-19	Champaign	0WSW(367)	\$309,938
P01	HPR-66-005-19	Chicago	S0NI(024)	\$13,810,856
A57	HPR-66-006-19	Danville	2631(307)	\$158,922
P05	HPR-66-007-19	Decatur	UI8R(721)	\$229,175
A56	HPR-66-008-19	DeKalb	PK8Q(127)	\$184,737
P06	HPR-66-009-19	Dubuque	Q1AJ(815)	\$10,196
P07	HPR-66-010-19	Kankakee	PKNS(546)	\$209,599
P08	HPR-66-011-19	Peoria	BY45(041)	\$518,825
P09	HPR-66-012-19	Quad Cities	75A2(177)	\$300,621
P10	HPR-66-013-19	Rockford	DSSS(338)	\$567,396
P11	HPR-66-014-19	St. Louis	90JD(279)	\$853,832
P12	HPR-66-015-19	S. Beloit	WN4N(103)	\$48,002
P13	HPR-66-016-19	Springfield	JVQP(474)	\$339,922
			TOTAL	\$18,024,641

Summary of Metropolitan Planning Organizations

<u>Metropolitan Planning Area</u>	<u>Agency</u>	<u>Anticipated Accomplishments</u>
Bloomington/Normal Function P16	McLean County Regional Planning Commission	Provide technical assistance on local projects that support individual municipalities. Improve coordination of land use and transportation planning in a manner that supports the economic vitality of the metropolitan area. Create an online toolkit that will be a one stop shop for community development resources currently available and tools identified in the comprehensive plans. Prepare and develop the TIP of area transportation projects over the next 5-years. Continue to support expansion of sustainable transportation programs such as Good To Go Commuter Challenge, PARKing Day, Bike Share, etc. Update the 2045 Long Range Transportation plan as necessary. Update the regional travel demand model. Improve rural transportation access. The MPO endorses the work scheduled.

<u>2019 Total Cost</u>	<u>PL</u>	<u>PL MATCH</u>	<u>FTA</u>	<u>FTA MATCH</u>
\$454,127	\$295,439	\$73,860	\$67,863	\$16,966

<u>Metropolitan Planning Area</u>	<u>Agency</u>	<u>Anticipated Accomplishments</u>
Cape Girardeau Function B68	Southeast Metropolitan Planning Organization	Develop the annual budget and Unified Planning Work Program for FY 2020. Conduct public outreach activities according to the Public Participation Plan. Compile data and maintain databases for demographics, socioeconomics, land uses, traffic counts, traffic accidents and crashes for the planning area. Amend the 2016-2040 Metropolitan Transportation Plan as necessary. Prepare the FY 2020-2023 Transportation Improvement Program (TIP). Consultant will be hired to develop customized software to assist in managing the TIP. A consultant will also be hired to assist the MPO to create an Americans with Disabilities Act (ADA) transition plan. The current Title VI program is ending and a new FT 2019-2022 Title VI program will be completed. Establish performance targets. The MPO endorses the work scheduled.

<u>2019 Total Cost</u>	<u>PL</u>	<u>PL MATCH</u>	<u>FTA</u>	<u>FTA MATCH</u>
\$2,274	\$1,630	\$408	\$189	\$47

<u>Metropolitan Planning Area</u>	<u>Agency</u>	<u>Anticipated Accomplishments</u>
-----------------------------------	---------------	------------------------------------

Carbondale	Southern Illinois Metropolitan Planning Organization	The Long Range Transportation Plan will be updated as needed. The FY 2020-2023 Transportation Improvement Program will be prepared. Continue to improve services to meet the mobility needs of the elderly, persons with disabilities and the transportation disadvantaged. Ensure Title VI compliance. Conduct special contractual studies: Safety Study, Wall Street "Road Diet" City of Carbondale, Jefferson School Safe Routes to Schools Study City of Marion, and Completion of Marion Pedestrian Study. The MPO endorses the work scheduled.
------------	--	--

<u>2019 Total Cost</u>	<u>PL</u>	<u>PL MATCH</u>	<u>FTA</u>	<u>FTA MATCH</u>
\$275,421	\$185,552	\$46,388	\$34,785	\$8,696

Metropolitan Planning Area	Agency	Anticipated Accomplishments
Champaign/Urbana Function P17	Champaign/Urbana Area Transportation Study	Start development of the Long Range Transportation Plan 2045. Update, display and disseminate traffic/transportation data on the Data Portal. Amend as needed the Transportation Improvement Program (TIP) FY 2019-2022. Develop the TIP FY 2020-2023. Complete the Freight Movement Study/Plan. Provide support for the safety improvements in the University District. Update the Motor Vehicle Emissions Simulator (MOVES) model to estimate greenhouse gas emissions. Update the 2005 Intelligent Transportation System (ITS) Architecture. Update the Human Services Transportation Plan. Update the Greenways and Trails Plan. Prioritize list of Illinois Transpiration Enhancement Projects. Prepare/update the Title VI document. Prepare events for Walk 'n Roll to School Day. Analyze IDOT crash data to determine high crash locations. Evaluate trends in travel conditions. Support regional planning efforts using Travel Demand Model. The MPO endorses the work scheduled.

<u>2019 Total Cost</u>	<u>PL</u>	<u>PL MATCH</u>	<u>FTA</u>	<u>FTA MATCH</u>
\$477,709	\$309,938	\$77,485	\$72,229	\$18,057

<u>Metropolitan Planning Area</u>	<u>Agency</u>	<u>Anticipated Accomplishments</u>
Chicago P01	Chicago Metropolitan Agency for Planning	Funding for 3-C transportation planning activities will be conducted by the Chicago Metropolitan Agency for Planning, City of Chicago, Chicago Transportation Authority (CTA), Pace Suburban Bus, Northeastern Illinois Regional Commuter Railroad Corporation (METRA) and the Northeast Council of Mayors. Provide technical assistance and coordination to local governments for planning activities. Manage the Community Planning Program and other grants. Continue development of a performance based evaluation criteria for highway and transit funding decision. Continue to conduct congestion pricing analysis. Conduct transportation planning and transit security/safety planning. Assist local governments in activities that integrate transit with land use and housing. Amend the Transportation Improvement Program as necessary. Continue to develop the Long Range Transportation Plan. Conduct a variety of transit survey as requested. Manage the CMAQ Program. The MPO endorses the work scheduled.

<u>2019 Total Cost</u>	<u>PL</u>	<u>PL MATCH</u>	<u>FTA</u>	<u>FTA MATCH</u>
\$22,434,059	\$13,810,856	\$3,452,714	\$4,136,391	\$1,034,098

<u>Metropolitan Planning Area</u>	<u>Agency</u>	<u>Anticipated Accomplishments</u>
Danville Function A57	Danville Area Transportation Study	Manage tasks within the FY 2019 Unified Planning Work Program. Continue to work on and implement the 2040 Long Range Transportation Plan. Amend the FY 2019-2022 Transportation Improvement Program as needed. Adopt a Greenways & Trails Plan for the metropolitan planning area. Conduct research for Vermilion County Americans with Disabilities Act. Continue support for the integration of transportation, urban design, and land use planning with regional partners. Conduct daily traffic, peak hour volume, vehicle miles traveled and accidents data. collect data on population, land use and socio-economic data. Continue working with School District 118. Maintain comprehensive website on regional transportation activities. A special study entitled "Roadway Drainage Inventory and Programming Project" has been requested in FY 2019. The MPO endorses the work scheduled.

<u>2019 Total Cost</u>	<u>PL</u>	<u>PL MATCH</u>	<u>FTA</u>	<u>FTA MATCH</u>
\$232,113	\$158,922	\$39,731	\$26,768	\$6,692

<u>Metropolitan Planning Area</u>	<u>Agency</u>	<u>Anticipated Accomplishments</u>
Decatur Function P19	Decatur Urbanized Area Transportation Study	Continue to update the 2040 Long Range Transportation Plan. Monitor compliance with Environmental Justice standards. Identify minority/low-income populations and strive to develop project improvements. Administer the budgeting, financial oversight, capital acquisition, staff coordination of the Decatur Public Transit System. Maintain and update the 4-year, multi-modal Transportation Improvement Program. Assess the existing street network and transportation delivery system. Attend training classes related to Geographic Information System. Analyze Traffic volumes, crash data and access management to improve safety. Develop pavement management system and the safety management system. Conduct on/off board traffic passenger counts, assist with creating new routes, and schedules. Conduct transit security inspections. continue to explore the possibility of extended transit service to Forsyth, Mt. Zion, Harristown and Long Creek. The MPO endorses the work scheduled.

<u>2019 Total Cost</u>	<u>PL</u>	<u>PL MATCH</u>	<u>FTA</u>	<u>FTA MATCH</u>
\$346,363	\$229,175	\$57,294	\$47,915	\$11,979

<u>Metropolitan Planning Area</u>	<u>Agency</u>	<u>Anticipated Accomplishments</u>
DeKalb Function A56	DeKalb/Sycamore Area Transportation Study	Continue updates of the Long Range Transportation Plan. Identify roadways that should be tested for a pavement condition survey. Implement federally mandated performance measures. Update supporting transportation plans over the next 2-3 years which includes: The Public Participation Plan and The Human Services Transportation Plan. Conduct the annual Traffic Counts Study. Advertise and promote awareness of the non-motorized transportation systems. The MPO endorses the work scheduled.

<u>2019 Total Cost</u>	<u>PL</u>	<u>PL MATCH</u>	<u>FTA</u>	<u>FTA MATCH</u>
\$274,095	\$184,737	\$46,184	\$34,539	\$8,635

<u>Metropolitan Planning Area</u>	<u>Agency</u>	<u>Anticipated Accomplishments</u>
Dubuque Function P20	Dubuque Metropolitan Area Transportation Study	Process amendments to the Long Range Transportation Plan 2045 as necessary and work on updating the plan to include the regional Freight Plan. Update the travel demand model. Update the Tri State Trail Plan. Participate in the Mississippi River Trail development. Monitor the local land use plans as they impact the metro area transportation system. Maintain the Geographic Information System with updated information. Collect trail counts and traffic counts for cities and counties. Provide support to the Jule Transit System. Develop the FFY 2019-2022 Transportation Improvement Program. Prepare the Title VI compliance report. Update the Public Participation Policy. Work with local emergency planners to improve the metropolitan transportation facilities. The MPO endorses the work scheduled.

<u>2019 Total Cost</u>	<u>PL</u>	<u>PL MATCH</u>	<u>FTA</u>	<u>FTA MATCH</u>
\$15,070	\$10,196	\$2,549	\$1,860	\$465

<u>Metropolitan Planning Area</u>	<u>Agency</u>	<u>Anticipated Accomplishments</u>
Kankakee Function P21	Kankakee Area Transportation Study	The 2020 Unified Work Program and the 2020 Transportation Improvement Program will be prepared and published. The Long Range Plan will be updated and maintained. Transit technical assistance will be provided to the River Valley Metro Mass Transit District. Assistance will be provided to the Region 6 Rural Human Services Transportation Program committee. Public involvement in all elements of the transportation process will continue. Ongoing projects that are continually updated include: traffic count information, FAST Act performance measures, assistance to local school districts for Safe Routes to Schools, evaluation of the MPO database, and semi-annual collection of travel time surveys. Support will be provided with Geographic Information System (GIS) mapping. The MPO endorses the work scheduled.

<u>2019 Total Cost</u>	<u>PL</u>	<u>PL MATCH</u>	<u>FTA</u>	<u>FTA MATCH</u>
\$314,528	\$209,599	\$52,400	\$42,023	\$10,506

<u>Metropolitan Planning Area</u>	<u>Agency</u>	<u>Anticipated Accomplishments</u>
Peoria Function P22	Peoria/Pekin Urban Area Transportation Study	As necessary, amend the FY 2019 Unified Work Program (UWP) and develop the FY 2020 UWP. Update the Travel Demand Mode, to include current Average Daily Traffic information. Develop a regional payment management system. Implement the FY 2015-2040 Metropolitan Transportation Plan. Monitor Performance Measures. Develop System/Bridge Condition Performance Measures. Develop a plan to provide transit and para-transit to areas not served by a public transit system. Promote passenger/commuter rail for the region. Update the Human Services Transportation Plan. Develop the FY 2019-2022 Transportation Improvement Program. Continue to monitor air quality issues. Update the regional Intelligent Transportation System (ITS) Architecture. Develop an Off-Road Multi-Use Facility Study for the City of Pekin. Develop System Performance/Freight/CMAQ measures. Integrate Travel Demand Model with CommunityViz. Assist communities in developing a Geographic Information System (GIS). Promote multimodal freight transpiration options. The MPO endorses the work scheduled.

<u>2019 Total Cost</u>	<u>PL</u>	<u>PL MATCH</u>	<u>FTA</u>	<u>FTA MATCH</u>
\$817,417	\$518,825	\$129,706	\$135,109	\$33,777

<u>Metropolitan Planning Area</u>	<u>Agency</u>	<u>Anticipated Accomplishments</u>
Davenport/Rock Island/Moline (Quad Cities) Function P23	Bi-State Regional Commission	Revise, as necessary the FY 2019 Transportation Planning Work Program(TPWP) and develop the FY 2020 TPWP. Continue comprehensive land use planning. Monitor passenger rail service and facilities. Continue to monitor status of National Ambient Air Quality Standards, climate change, climate adaption, hazard mitigation/resilience, and greenhouse gas and their impact on transportation planning. Update the metropolitan area Average Daily Traffic mapping as needed. Maintain travel demand model network. Continue to facilitate the regional freight commodity plan. Prepare Transit Development Plan update. Maintain the Federal Fiscal Year (FFY) 2019-2022 Transportation Improvement Program (TIP) and prepare the FFY 2020-2023 TIP. Provide assistance to non-motorized (bicycle facilities & pedestrian) planning. Prepare or assist with Title VI compliance. Assist in transit route analysis and marketing efforts. Prepare crash analysis and provide technical assistance in traffic safety and security efforts. Complete strategic traffic safety plan for Quad Cities. The MPO endorses the work scheduled.

<u>2019 Total Cost</u>	<u>PL</u>	<u>PL MATCH</u>	<u>FTA</u>	<u>FTA MATCH</u>
\$462,555	\$300,621	\$75,155	\$69,423	\$17,356

<u>Metropolitan Planning Area</u>	<u>Agency</u>	<u>Anticipated Accomplishments</u>
Rockford Function P24	Rockford Metropolitan Planning Organization	Update the FY 2019-2022 Transportation Improvement Program. Maintain the travel demand modeling program. Monitor traffic count programs. Monitor changes in land use plans. Prepare the Title VI and Environmental Justice assessments. Develop more online/interactive mapping applications Update the Long Range Transportation Plan. Prepare updates to the Greenway Plan for the planning area. Create an Alternative Transportation Committee to improve accessibility, connectivity and ease of multi-modal mobility. Monitor the development of a Primary Freight Network to enhance economic supply chains and the region's overall economy. Develop traffic count programs. Develop the Functional Classification System maps for the urban area. Develop performance based programming for highway and transit funding decisions. Provide technical assistance in reviewing zoning ordinances, land use plans, and socio-economic planning activities to determine future transportation needs. The MPO endorses the work scheduled.

<u>2019 Total Cost</u>	<u>PL</u>	<u>PL MATCH</u>	<u>FTA</u>	<u>FTA MATCH</u>
\$896,409	\$567,396	\$141,849	\$149,731	\$37,433

<u>Metropolitan Planning Area</u>	<u>Agency</u>	<u>Anticipated Accomplishments</u>
St. Louis – Alton Function P25	East-West Gateway Council of Governments	Prepare the FY 2019-2022 Transportation Improvement Program. Update the traffic count database. Provide technical support to improve transportation safety. Conduct a comprehensive education outreach program for teen driver's safety program. Collect fare usage and passenger boarding information for MetroLink, MetroBus, Call-A-Ride, seasonal service and Americans with Disabilities usage. Update the Title VI program. Prepare the FY 2020 Unified Planning Work Program. Update the inventory of the existing bicycle network in Geographic Information System (GIS) for use in transportation studies. Provide technical assistance to local sponsors developing bicycle, pedestrian and Safe Routes to Schools projects. Maintain the regional Freight GIS inventory/Warehouse. Prepare inventory of the existing MetroLink system in relation to crime, enforcement policies, safety, security practices, and physical infrastructure. Prepare update to the Regional Transportation Plan (RTP) including a State of the System report. Revise the All-Hazard Mitigation Plan. The MPO endorses the work scheduled.

<u>2019 Total Cost</u>	<u>PL</u>	<u>PL MATCH</u>	<u>FTA</u>	<u>FTA MATCH</u>
\$1,362,233	\$853,831	\$213,458	\$235,955	\$58,989

<u>Metropolitan Planning Area</u>	<u>Agency</u>	<u>Anticipated Accomplishments</u>
S. Beloit Function P15	Stateline Area Transportation Study	This is the only MPO that is on a calendar year basis instead of the state fiscal year. A new TIP and UWP will be prepared. Support will be provided to local jurisdictions. Performance measures will be established. Coordinate traffic studies, corridor studies, and intersection studies. Continue work on Environmental Justice and accessibility analyses. Continue outreach to community groups to improve public involvement. Monitor air quality to remain an "attainment" area. Prepare the 2019-2022 Transportation Improvement Program. Continue implementation of the 2016-2040 Long Range Transportation Plan including the Bike and Pedestrian Component and continued development of a regional freight route plan. Assist the transit agencies in implementing each system's Transit Development Plan.

<u>2019 Total Cost</u>	<u>PL</u>	<u>PL MATCH</u>	<u>FTA</u>	<u>FTA MATCH</u>
\$71,670	\$48,003	\$12,001	\$9,333	\$2,333

<u>Metropolitan Planning Area</u>	<u>Agency</u>	<u>Anticipated Accomplishments</u>
Springfield Function P26	Springfield Area Transportation Study	Prepare the 2020 Unified Planning Work Program. Prepare the Title VI report. Amend the 2040 Long Range Transportation Plan. Develop and update performance measures for compliance. Maintain a current Transportation Improvement Plan. Provide technical support to transit and paratransit operators. Participate in the Human Service Transportation Plan. Provide assistance to the Bicycle and Pedestrian Plan. Conduct a 2019 downtown parking survey. Maintain the TransCad Travel demand model. Compile and maintain inventory of Sangamon/Menard Are Regional Transit and Springfield Mass Transit District fixed route system and paratransit services. Support implementation of the Sangamon County Regional Strategic Plan. Work with providers to develop a Transit Asset Management Plan. Conduct Public Participation opportunities. Facilitate "Curb Your Car" Commute Challenge. Create/update/maintain GIS data layers for functional road classification, rail consolidation, trails, sidewalks and areas with underserved populations. The MPO endorses the work scheduled.

<u>2019 Total Cost</u>	<u>PL</u>	<u>PL MATCH</u>	<u>FTA</u>	<u>FTA MATCH</u>
\$526,471	\$339,922	\$84,981	\$81,255	\$20,314

Chapter Three – Multi-Year Projects from Previous Programs

Chapter Three includes SPR funded contracts that were originally approved and executed during previous fiscal years. The contracts listed on the following pages are multi-year contracts that require funding for the FY 2019 portion of the contract.

Function	APA STATE JOB NUMBER	Title	Federal Project Number	TOTAL COST
P27	HPR-66-017-19	Highway Program Planning	XBZD(085)	\$2,500,000
P31	HPR-66-118-18	Pavement Condition Rating	3000(123)	\$1,928,345
P32	HPR-66-142-18	Comprehensive Bridge Mgmt System	C2IU(841)	\$187,500
P33	HPR-66-120-18	Statewide Program Planning Systems	3000(125)	\$2,864,500
B37	HPR-66-145-18	Bridge Watch® System	8Z5K(365)	\$127,000
B48	HPR-66-146-18	Alternative Financing & Project Delivery	8VIY(737)	\$2,264,813
B59	HPR-66-126-18	Fiber Planning	3000(130)	\$82,688
B99	HPR-66-159-18	Truck Oversize/Overweight	HGVS(307)	\$977,109
D29	HPR-66-152-18	Statewide Travel Demand Model Development	SYBM(165)	\$0
D30	HPR-66-153-18	Performance Management Research Data Set	ELCP(673)	\$0
P70	HPR-66-138-18	Traffic Monitoring Equipment	3000(141)	\$960,000
P74	HPR-66-139-18	Geographic Information Systems/Technical Support	3000(142)	\$1,922,464
D32	HPR-66-140-18	Traffic Data Collection D-1 through D-9	3000(143)	\$6,549,600
D35	HPR-66-158-18	Multi-Year Program Highways Program Development	96N6(732)	\$33,000
			TOTAL SPR	\$20,397,019

<u>Function</u>	<u>Office</u>	<u>Bureau</u>	<u>Project Title</u>	<u>Description of Project</u>	<u>2019 Total Cost</u>	<u>2019 Federal Cost</u>
P27	OPP	Programming	Highway Program Planning	This job number reimburses the salary of 13 employees in the Bureau of Programming. The 13 employees are paid from a separate appropriation of 011-49407-1900-2200. Costs vary due to employees leaving and new hires. These positions include: Bureau Chief of Programming, Annual Project Information Analyst, Highways Planning Manager, Program Development Section Chief, Interstate & Special Programs Manager, Urban Highways Program Manager, Intercity Highways Program Manager, System Performance Manager, Program Management Section Chief, Urban Highways Program Analyst, Project Information Manager and Special Program Manager. The FY 20 Federal SPR cost will be \$2,000,000 and the FY 21 Federal SPR cost will be \$2,100,000.	\$2,500,000	\$2,000,000

2020 Total Cost	2020 Federal Cost	2021 Total Cost	2021 Federal
\$2,500,000	\$2,000,000	\$2,625,000	\$2,100,000

<u>Function</u>	<u>Office</u>	<u>Bureau</u>	<u>Project Title</u>	<u>Description of Project</u>	<u>2019 Total Cost</u>	<u>2019 Federal Cost</u>
P31	OPP	Bureau of Programming	Adapt CRS Data to a Pavement Management System	Contract was executed with Mandli Communication on 3/28/2017 and the agreement is effective for 4-years until 3/27/2021 and totals \$6,148,976 with an option to renew for another 4 years at a cost of \$6,546,810. This consultant conducts the Condition Rating Survey to assess the pavement condition of its 16,000-centerline mile highway system and the National Highway System (NHS). State Obligation #17T0052. The FY 20 Federal SPR cost will be \$1,542,676 and the FY 21 Federal SPR cost will be \$1,309,362.	\$1,928,345	\$1,542,676

2020 Total Cost	2020 Federal Cost	2021 Total Cost	2021 Federal
\$1,928,345	\$1,542,676	\$1,636,703	\$1,309,362

<u>Function</u>	<u>Office</u>	<u>Bureau</u>	<u>Project Title</u>	<u>Description of Project</u>	<u>2019 Total Cost</u>	<u>2019 Federal Cost</u>
P32	OPP & Highways	Bureau of Bridges & Structures	Comprehensive Bridge Management	Funding is provided for employees of the Bureau of Bridges to attend classes provided by the Federal Highway Administration such as fracture critical inspection techniques for steel bridges and safety inspection of in-service bridges. State Obligation #BRDGCLSS18. The FY 20 Federal SPR cost will be \$150,000 and the FY 21 Federal SPR cost will be \$150,000.	\$187,500	\$150,000

2020 Total Cost	2020 Federal Cost	2021 Total Cost	2021 Federal
\$187,500	\$150,000	\$187,500	\$150,000

<u>Function</u>	<u>Office</u>	<u>Bureau</u>	<u>Project Title</u>	<u>Description of Project</u>	<u>2019 Total Cost</u>	<u>2019 Federal Cost</u>
P33	OPP and F&A	Bureau of Programming/Bureau of Information Processing	Statewide Windows Planning and Programming System (WPPS)	Contracts were executed on 12/16/2014 with Marucco Stoddard Ferenbach & Walsh Inc and MBB of Springfield to allow additional enhancements to WPPS that were identified during the original contract. Both contracts are effective until 12/15/18 with OPP and the Bureau of Information Processing (BIP) funding the contracts. State Obligation #'s 15HWE2ESH and 15HWE2ESP.	\$2,864,500	\$2,291,600

<u>Function</u>	<u>Office</u>	<u>Bureau</u>	<u>Project Title</u>	<u>Description of Project</u>	<u>2019 Total Cost</u>	<u>2019 Federal Cost</u>
B37	OPP & Highways	Bureau of Bridges & Structures	BridgeWatch® System	The agreement with USengineering Solution Corp was extended in FY 2018 for another 60 months to 07/22/2022 at a total cost of \$635,000 to continue to provide BridgeWatch® scour and storm related monitoring services for 650 bridges in Illinois. State Obligation #13T0024. The FY 20 SPR cost will be \$101,600 and FY 21 SPR cost will be \$101,600	\$127,000	\$101,600

2020 Total Cost	2020 Federal Cost	2021 Total Cost	2021 Federal
\$127,000	\$101,000	\$127,0000	\$101,000

<u>Function</u>	<u>Office</u>	<u>Bureau</u>	<u>Project Title</u>	<u>Description of Project</u>	<u>2019 Total Cost</u>	<u>2019 Federal Cost</u>
B48	OPP	Bureau of Innovative Project Delivery	Alternative Financing & Project Delivery	A contract was executed with CDM Smith Inc on 10/25/2017 and is effective until 10/24/2019 to develop alternative financing and project delivery options, including public-private partnerships. Contract may be renewed for a total of two (2) 24 months at the same rate as the initial term. The total contract cost is \$3,703,200. State obligation #18T0024.	\$2,264,813	\$1,811,850

2020 Total Cost	2020 Federal Cost	2021 Total Cost	2021 Federal
\$2,264,813	\$1,811,850	\$2,264,813	\$1,811,850

<u>Function</u>	<u>Office</u>	<u>Bureau</u>	<u>Project Title</u>	<u>Description of Project</u>	<u>2019 Total Cost</u>	<u>2019 Federal Cost</u>
B59	OPP and F&A	Bureau of Programming/Bureau of Information Processing	Fiber Planning & Tracking Software Purchase	The original contract was signed with 3-GIS LLC on 4/10/15 and the contract was effective until 4/9/2017. 3-GIS is providing project management, implementation and training for the 3-GIS Network Solutions. This contract is jointly funded between BIP and OPP. This contract has a renewal clause up to 8 years. The 1st renewal clause was executed in FY 2017 for year 3 (2018) and year 4 (2019) at a cost of \$82,688.00 which was obligated and paid in FY 2018. The 2nd renewal clause will be executed in FY 2019 for year 5 and year 6 at a cost of \$82,688. State Obligation #FIBERMAN15. The FY 20 Federal SPR cost will be \$66,150 and the FY 21 Federal SPR cost will be \$66,150.	\$82,688	\$66,150

2020 Total Cost	2020 Federal Cost	2021 Total Cost	2021 Federal
\$82,688	\$66,150	\$82,688	\$66,150

<u>Function</u>	<u>Office</u>	<u>Bureau</u>	<u>Project Title</u>	<u>Description of Project</u>	<u>2019 Total Cost</u>	<u>2019 Federal Cost</u>
B99	OPP and Highways	Bureau of Planning & Bureau of Operations	Truck Size/Weight Study on Roadways and Bridges	A new contract was executed in FY 16 with WHKS & Co that is effective until 09/01/2019 to study the effects of larger trucks on the state's pavement and structures. The contract totals \$2,227,108. State Obligation #16T0005.	\$977,109	\$781,687

<u>Function</u>	<u>Office</u>	<u>Bureau</u>	<u>Project Title</u>	<u>Description of project</u>	<u>2019 Total Cost</u>	<u>2019 Federal Cost</u>
D29	OPP	Bureau of Planning	Statewide Travel Demand Model Development	A contract was executed with Resource Systems Group on 1/25/18 and is effective until 1/24/21 to consolidate existing data sources and related studies to build an efficient Illinois Statewide Travel Demand Model. The 3-year total for this agreement totals \$1,632,840 and it has been fully obligated with FHWA and with the Illinois Comptroller. This contract includes a 3-year renewal option at the estimated cost of \$1,632,840.00. State Obligation #18T0035	Already Obligated to 1/24/21	Already Obligated to 1/24/21

2022 Total Cost	2022 Federal Cost	2023 Total Cost	2023 Federal
\$544,280	\$435,424	\$544,280	\$435,424

<u>Function</u>	<u>Office</u>	<u>Bureau</u>	<u>Project Title</u>	<u>Description of Project</u>	<u>2019 Total Cost</u>	<u>2019 Federal Cost</u>
D30	OPP	Bureau of Planning	Performance Management Research Data Set/RITIS	An agreement has been signed with the University of Maryland to procure the services of the Regional Integrated Transportation System (RITIS), a web based system hosted by the university. This agreement is effective from 1/16/18 to 1/15/2023. The 5-year agreement totals \$2,105,000 and the Federal Aid Obligation document has been approved in the amount of \$1,705,000. The 1st year funding has been obligated with the Illinois Comptroller totaling \$505,000 in Federal SPR funds. The 2nd year (FY 19) funding will be funded by State & Community Highway Safety Funds (\$400,000). Then, FY 20, 21, 22 and 23 will be funded with State Planning & Research Funds in the amount \$400,000 each year.	\$500,000	State & Community Highway Safety Funds

2020 Total Cost	2020 Federal Cost	2021 Total Cost	2021 Federal
\$500,000	\$400,000	\$500,000	\$400,000

<u>Function</u>	<u>Office</u>	<u>Bureau</u>	<u>Project Title</u>	<u>Description of Project</u>	<u>2019 Total Cost</u>	<u>2019 Federal Cost</u>
P70	OPP	Bureau of Programming	Traffic Monitoring Equipment	Magnetic lane counters along with supporting equipment and supplies will be purchased and existing counters repaired for all districts to provide full coverage of truck counts using length based classification. Additional spare equipment will be purchased for the Automated Traffic Recorder network. Repair parts and supplies will be purchased to supports all traffic monitoring operations. State Obligation #'s: Midwestern Software Solution #17T0057; M H Corbin LLC traffic Counter purchase contract and the Miovision Technologies Inc to contract to purchase video and web based services are pending. The FY 20 Federal SPR cost will be \$768,000 and the FY 21 Federal SPR cost will be \$768,000.	\$960,000	\$768,000

2020 Total Cost	2020 Federal Cost	2021 Total Cost	2021 Federal
\$960,000	\$768,000	\$960,000	\$768,000

<u>Function</u>	<u>Office</u>	<u>Bureau</u>	<u>Project Title</u>	<u>Description of Project</u>	<u>2019 Total Cost</u>	<u>2019 Federal Cost</u>
P74	OPP and BOBs	Bureau of Programming/Bureau of Information Processing	Geographic Information Systems/Technical support	A contract was executed with GIS Solutions Inc that totals \$8,841,047 and is effective from 09/16/2016 to 09/15/2019 with a 3-year renewal option. The 3-year renewal option totals \$9,215,201. This contract provides technical support for the continued development and support of GIS products s, GIS packages to assist Annual and Multi-Year Programming activities, adding city street data to GIS, accessing more current aerial photos, realignment of existing road network using DOQ photos, Traffic Count Management, and Roadway Inventory Management. This contract is funded between OPP and BIP. State Obligation #17GISSOA	\$1,922,464	\$1,537,971

2020 Total Cost	2020 Federal Cost	2021 Total Cost	2021 Federal
\$2,071,733	\$1,537,971	\$2,114,685	\$1,691,748

<u>Function</u>	<u>Office</u>	<u>Bureau</u>	<u>Project Title</u>	<u>Description of Project</u>	<u>2019 Total Cost</u>	<u>2019 Federal Cost</u>
D32	OPP	Bureau of Programming	Field Collection of Traffic Data on Various Routes in Districts 1-9	Contracts were executed with DLZ Illinois Inc., Gewalt Hamilton Associates Inc. and Terra Engineering to collect 24 hours traffic/classification counts in District 1 through District 9. These 3 contracts equal a total cost of \$8,600,000 with \$2,050,400 obligated in FY 2018. DLZ Illinois is collecting counts in Districts 2, 4 and 5. State obligation #18T0036. Gewalt Hamilton Association Inc. is collecting counts in Districts 1 and 3. State obligation #PTB185028. Terra Engineering is collecting counts in Districts 6, 7, 8 and 9. State Obligation # PTB185029.	\$6,549,600	\$5,239,680

<u>Function</u>	<u>Office</u>	<u>Bureau</u>	<u>Project Title</u>	<u>Description of Project</u>	<u>2019 Total Cost</u>	<u>2019 Federal Cost</u>
D35	OPP	Bureau of Programming	Multi-Year Program Highways Program Development	Vanguard Software Corporation was issued a contract on 2/9/2018 that is effective until 2/8/2021. The vendor will design a commercial off-the-shelf software system designed for the department's Financial Forecasting to replace the current Microsoft Excel spreadsheet-based forecasting models. The first-year funding totaled \$283,000. State Obligation #HPDPRFP18. The Federal SPR cost for FY 20 is \$26,400.	\$33,000	\$26,400

2020 Total Cost	2020 Federal Cost	2021 Total Cost	2021 Federal
\$33,000	\$26,400	\$33,000	\$26,400

Appendix A - Office of Planning and Programming Job Numbering System

OPP Job-Numbering System

Beginning July 1, 2018, the FY 2019 SPR-PL Transportation Planning Work Program **does not** include any non-participating job numbers. All employee labor that is incurred by OPP staff, by central office staff and by staff of the District Bureaus of Planning in accomplishing the federal activities described in this document will use the IDOT Employee Time Card Form (PRO 233L) which is under the Originating Office of Programming. Staff will charge their time as a 1 for federal participating if the work can be tied to a federal funded project. If those employees are conducting work that is not tied to a federally participating SPR job number, then they do not have to fill in a time card for OPP.

Each project listed in this document has been given a separate state job number which correlates to an individual Federal Project Number. As an example, if a staff member was working on any tasks associated with the Traffic Monitoring Equipment HPR-66-118-18 and the Traffic Data Collection D-1 through D-9 HPR-66-140-18 contracts for a couple of hours a day their time card would look like lines 1 and 2 below. If the rest of their work schedule was not associated with any of the other projects listed in this document, the time card would look like the 3rd line below.

PERIOD ENDING DATE			EID				RESP	EMPLOYEE NAME													TOTAL														
MONTH	DAY	YEAR	1	2	3	4	5	6	7	8	9	10	11	12	13	14	15	16	17	18	19	20	21	22	23	24	25	26	27	28	29	30	31	HRS.	
7	15	2018																																	
JOB NUMBER	PC	FUNCT. CODE*	HPR-66-118-18	1	P31		2.00																												3.00
HPR-66-140-18	1	D32				3.00								2.00																				5.00	
990				5.50	7.50	4.50	7.50	7.50				5.50	7.50	7.50	6.50	7.50																		67.00	

Budgetary Responsibility Code

- 7500: Office of Planning & Programming
- 7510: Bureau of Innovative Project Delivery
- 7520: Bureau of Data Collection
- 7530: Bureau of Planning
- 7540: Bureau of Programming
- 7550: Bureau of Research
- 7560: Bureau of Local Roads and Streets

Appendix B Illinois Highway Statewide Planning and Research Program and Metropolitan Planning Program

July 1, 2018 through June 30, 2019

A. Available Estimated Federal Funds

Unobligated Balance as of 06/11/2018

STATE PLANNING & RESEARCH (SPR) FUNDS

L550		\$6,035,543
L55E		\$4,846,376
M55E		\$3,456,227
Z550		\$57,258,296
	TOTAL	\$71,596,442

PL FUNDS

L450		\$45,881
L45E		\$1,143,781
M45E		\$295,293
Z450		\$40,890,632
	TOTAL	\$42,375,587

FTA FUNDS

Z77D	TOTAL	\$6,679,879
------	-------	-------------

B. Total Estimated Participating Costs

(SPR) New Projects	\$13,498,688
(SPR) Multi-Year Projects	\$16,317,614
Urbanized Area Planning (PL)	\$18,024,641
Urbanized Area (FTA)	<u>\$4,956,198</u>
	\$52,797,141

C. Proposed Financing

SPR Fund Types	80% Federal Funds	Match State Funds	Match Local Funds	Total
L550	\$6,035,543	\$1,508,886		\$7,544,429
L55E	\$4,846,376	\$1,211,594		\$6,057,970
M55E	\$3,456,227	\$864,057		\$4,320,284
Z550	\$15,478,156	\$2,318,966	\$1,550,573	\$19,347,695
	\$29,816,302	\$5,903,503	\$1,550,573	\$37,270,378

PL Fund Types	80% Federal Funds	Match State Funds	Match Local Funds	Total
L450	\$45,881	\$11,470		\$57,351
L45E	\$1,143,781	\$285,946		\$1,429,727
M45E	\$295,293	\$2,982	\$70,840	\$369,115
Z450	\$16,539,686	\$3,911,042	\$223,880	\$20,674,608
TOTAL	\$18,024,641	\$4,211,440	\$294,720	\$22,530,801

FTA Fund Type	80% Federal Funds	Match State Funds	Match Local Funds	Total
Z77D	\$5,343,904	\$1,266,030	\$69,945	\$6,679,879

Appendix C - Glossary

3C	Continuous, coordinated and Comprehensive
AASHTO	American Association of State Highway and Transportation Officials
ADA	Americans with Disabilities Act
BIP	Bureau of Information Processing
BOBs	Bureau of Business Services
CFR	Code of Federal Regulations
CTA	Chicago Transportation Authority
CRS	Condition Rating Survey
CMAQ	Congestion Mitigation & Air Quality
F&A	Finance & Administration
FFY	Federal Fiscal Year
FY	Fiscal Year
FTA	Federal Transit Administration
FHWA	Federal Highway Administration
HPMS	Highway Performance Monitoring System
GIS	Geographic Information System
ITS	Intelligent Transportation System
LLC	Limited Liability Company
L RTP	Long Range Transportation Plan
MPA	Metropolitan Planning Area
MPO	Metropolitan Planning Organization
NBI	National Bridge Inventory
NHS	National Highway System
NCHRP	National Research Programs
METRA	Northeastern Illinois Regional Commuter Railroad Corporation
OPP	Office of Planning & Programming
RFP	Request for Proposal
RITIS	Regional Integrated Transportation System
RTP	Regional Transportation Plan
ROW	Right of Way
SPR	State Planning & Research
STU	Surface Transportation Urban
TIP	Transportation Improvement Program
TPWP	Transportation Planning Work Program
UWP	Unified Work Program
WPPS	Windows Planning & Programming System