



<b>Associated City - Hospital</b>	<b>Identifier</b>	<b>Page</b>
Effingham – St. Anthony’s Memorial Hospital	11IS	38
Elgin – Provena St. Joseph Hospital	IS2Ø	39
Elgin – Sherman Hospital	25LL	40
Elk Grove Village – Alexian Bros. Medical Ctr.	23IL	41
Elmhurst – Elmhurst Memorial Healthcare	7IL6	42
Fairfield – Fairfield Memorial Hospital	9IL8	43
Flora – Clay County Hospital	3ØIL	44
Freeport – FHN Memorial Hospital	5ØIS	45
Galena – Midwest Medical Center	13IL	46
Galesburg – Cottage Hospital	5IL3	47
Galesburg – OSF St. Mary Medical Center	IL89	48
Geneseo – Hammond-Henry Hospital	3LL2	49
Geneva – Delnor Community Hospital	76IL	50
Gibson City – Gibson Area Hospital	9IS8	51
Glendale Heights – Adventist GlenOaks Hosp.	ISØ9	52
Glenview – Northshore Glenbrook Hospital	ØIS2	53
Granite City – Gateway Regional Medical Center	38LL	54
Grayslake – Northwestern Lake Forest Hospital	LL14	55
Greenville – Greenville Regional Hospital	59IS	56
Harrisburg – Harrisburg Medical Center	4IS4	57
Harvard – Mercy Harvard Hospital	8IL4	58
Harvey – Ingalls Memorial Hospital	IL92	59
Havana – Mason District Hospital	31IS	60
Hazel Crest – Advocate South Suburban Hosp	8IL8	61
Herrin – Herrin Hospital	5ILØ	62
Hillsboro – Hillsboro Area Hospital	8IS4	63
Hinsdale – Adventist Hinsdale Hospital		64
Hoffman Estates – St. Alexius Medical Center	ILØ3	65
Hopedale – Hopedale Medical Complex		65A
Hoopeston – Community Memorial Hospital	Ø1IL	66
Jacksonville – Passavant Area Hospital	84IS	67
Jerseyville – Jersey Community Hospital	27IL	68
Joliet – Provena St. Joseph Medical Center	6IS9	69
Kankakee – Riverside Medical Center	1ØIL	70
Kankakee – Provena St. Mary’s Hospital	11IL	71
Kewanee – Kewanee Hospital	ØIL5	72
LaGrange – Adventist LaGrange Mem. Hosp.	18IL	73
Lake Forest – Northwestern Lake Forest Hosp	45IL	74
Lawrenceville – Lawrence County. Mem. Hosp.	1LL1	75

# Hoopeston – Community Memorial Hospital Ø1IL

## NAV

**Lat:** N 40° 27.5'

**Long:** W 87° 39.5'

## COMM

**Freq:** 155.340

**PL:** 162.2 **W:**32

**Ph:** 217-283-5531

## LZ INFO

**Elev:**

715' Surface

**Lighting:**

Perimeter

**Beacon:**

No

**Wind Sock:**

Yes - Lighted

## FACILITY

Hoopeston Community  
Memorial Hospital

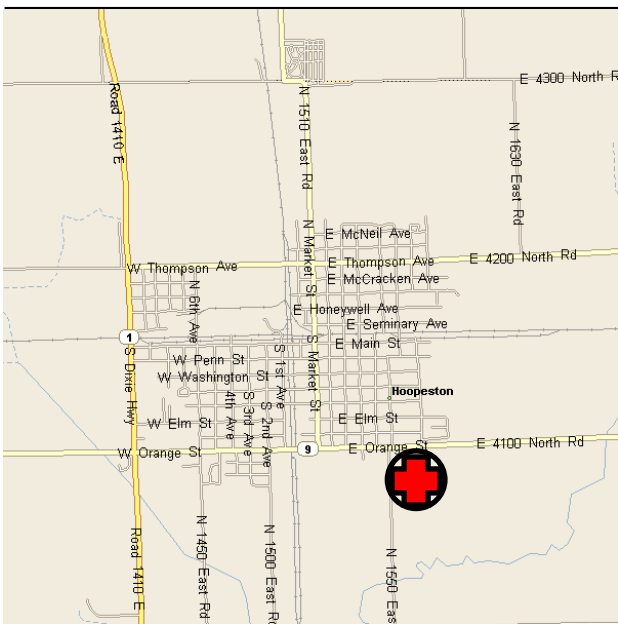
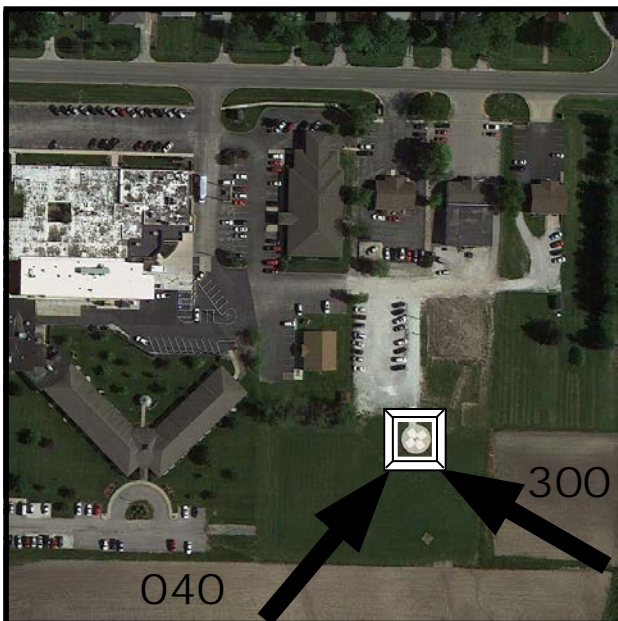
701 E. Orange

Hoopeston, IL 60942

TLOF: 30' X 30'

## SPECIAL NOTES:

New Photo



Amended: 2014-08-08

PAGE 66

# Hopedale Medical Complex

## NAV

**Lat:** N 40° 25.05

**Long:** W 89° 24.97

## COMM

**Freq:** 155.340

**PL:** 85.4 **W:** 7

**Ph:** 309-449-4400

## LZ INFO

**Elev:**

643 - Surface

**Lighting:**

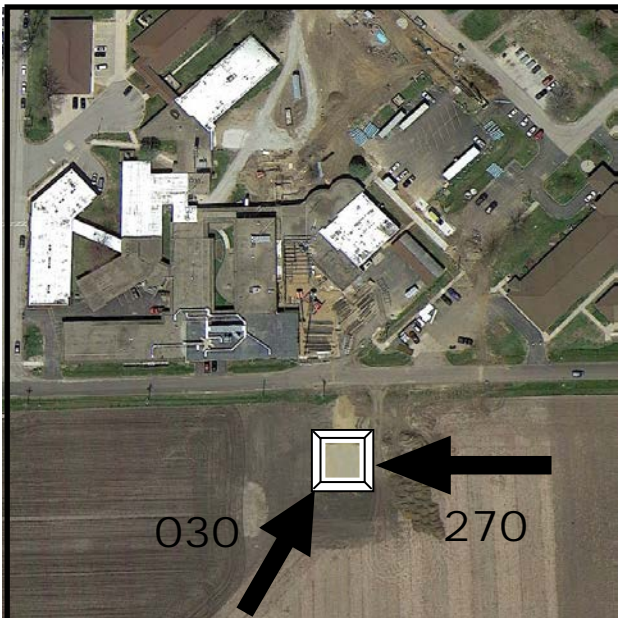
Flood

**Beacon:**

No

**Wind Sock:**

Yes - Lighted



## FACILITY

Hopedale Medical  
Complex

107 Tremont Street  
Hopedale, IL 61747

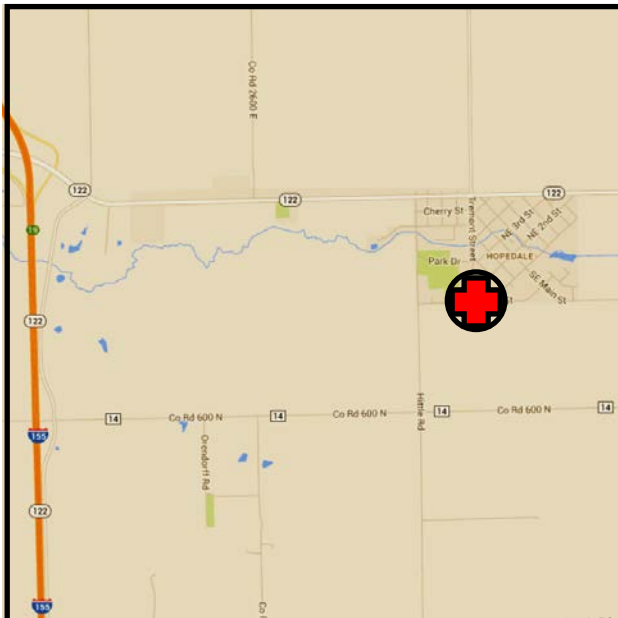
**TLOF:** 45 X 45

## SPECIAL NOTES:

Unmarked Power Lines to  
the North

FAA Loc ID in process

Open effective 8/8/2014



Amended: 2014-08-08

PAGE 66A

# Hopedale Medical Complex

# Lake Forest – Northwestern Lake Forest Hospital 45IL

## NAV

Lat: N 42° 15.3'

Long: W 87° 51.8'

## COMM

Freq: 155.340

PL: 67.0 W: 1

Ph: 847-234-5600

## LZ INFO

Elev:

640' Surface

Lighting:

Perimeter

Beacon:

Yes

Wind Sock:

Yes – Lighted

## FACILITY

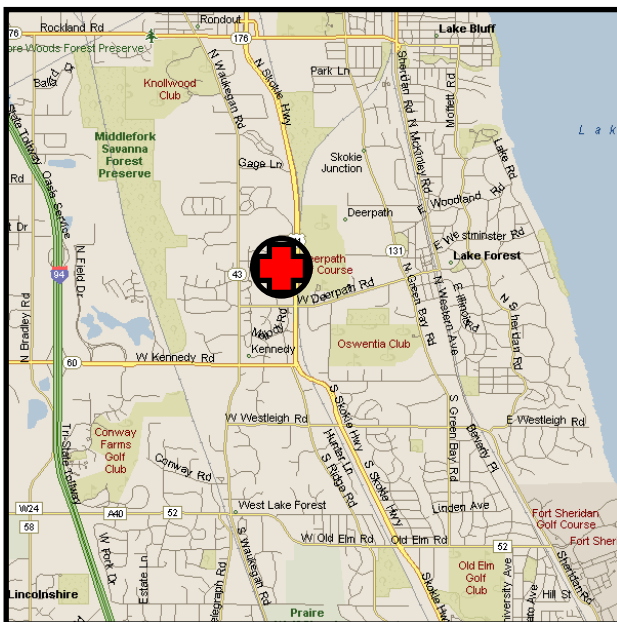
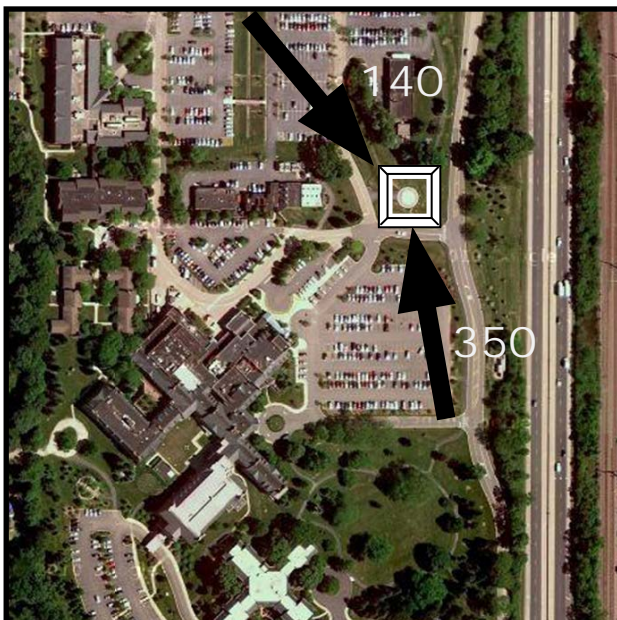
Northwestern Lake Forest Hospital

660 N. Westmoreland Rd.  
Lake Forest, IL 60045

TLOF: 50' X 50'

## SPECIAL NOTES:

New Photo



Amended: 2014-08-08

PAGE 74

# Lake Forest – Northwestern Lake Forest Hospital 45IL

# Monmouth – OSF Holy Family Medical Center LLØ1

## NAV

**Lat:** N 40° 55.3'

**Long:** W 90° 39.5'

## COMM

**Freq:** 155.340

**PL:** 71.9 **W:**02

**Ph:** 309-734-1400

## LZ INFO

**Elev:**

760' Surface

**Lighting:**

Flood

**Beacon:**

No

**Wind Sock:**

Yes – Lighted

## FACILITY

OSF Holy Family Medical Center

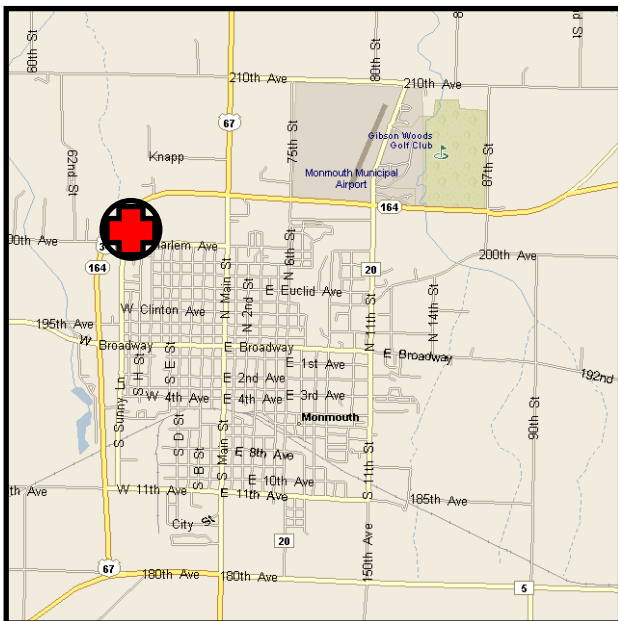
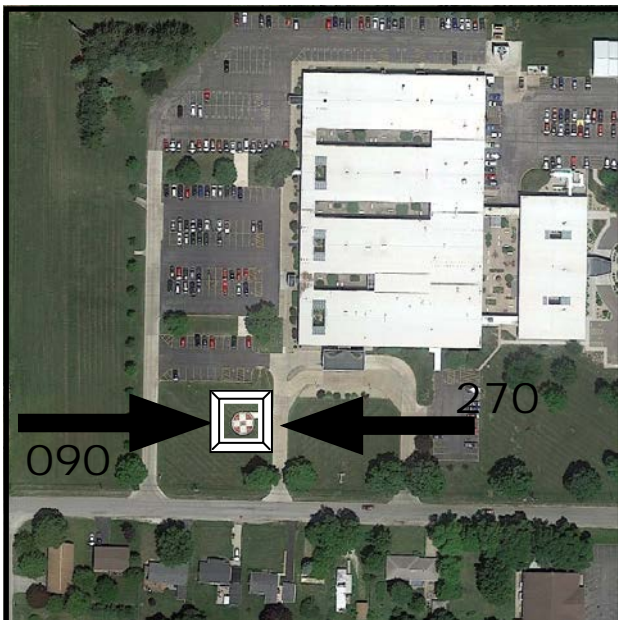
1000 W. Harlem

Monmouth, IL 61462

**TLOF:** 30' X 30'

## SPECIAL NOTES:

New photo



Amended: 2014-08-08

PAGE 91

# Monmouth – OSF Holy Family Medical Center LLØ1



