

Professional Transportation Bulletin

PTB 139

January 19, 2006



Illinois Department of Transportation
2300 South Dirksen Parkway, Springfield, Illinois 62764

**IMPORTANT NOTICE
SPECIAL PROFESSIONAL
TRANSPORTATION
BULLETIN REVISIONS**

Selection Date: April 5, 2006

The following revisions have been made to this Special Professional Transportation Bulletin. If you downloaded the bulletin prior to the noted revision date, you should incorporate the revisions or download and use a new copy of the bulletin.

REVISION DATE: There are no revisions as of January 19, 2006.

STATE OF ILLINOIS
Department of Transportation
2300 South Dirksen Parkway
Springfield, Illinois 62764

The Transportation Bulletin is the official Illinois Procurement Bulletin for the Illinois Department of Transportation as authorized by Section 15-1 of the Illinois Procurement Code, 30 ILCS 500/15-1. It is available on **IDOT's WEBSITE** at <http://www.dot.il.gov>.

Professional Transportation Bulletin

The Professional Transportation Bulletin Contains information pertaining to the advertisement for offers of interest for professional services for Department of Transportation projects.

Questions concerning this Bulletin should be directed to:

Carrie Kowalski
Consultant Unit Chief
E-mail: kowalski1@dot.il.gov
Phone: 217-782-6916

Or mailing address:

Bureau of Design and Environment
2300 South Dirksen Parkway
Room 330
Springfield, IL 62764

TIPS & TOOLS

To save:

To save a section "right click" on the link and select "save target as". To save the entire bulletin select "Download Complete Bulletin". This will save the self-extracting zip file.

To access web links:

The first time the web links are accessed the Internet browser will need to be set. *This will only have to be done one time.* When a web link is clicked on, a dialog box will appear:

"A Web Browser has not been specified. Do you want to configure the web link".

Click YES.

Another dialog box will appear. Select the drop down list "connection type" then select an Internet browser. (IDOT employees choose Internet Explorer.)

Using Tools:



To see previous view



To scroll through pages

To copy information from the Adobe .PDF file and paste it into a word processing application:

To view toolbar (if not open) **CLICK** Window on the menu bar then **CLICK** Show Tool Bar in the drop down box.

Select the text tool (Capital T) from your toolbar and highlight the text you want to copy. Open word processing application and paste.

To paste in Word. Open new document in Word **CLICK** Edit on the menu bar then **CLICK** Paste in the drop down box.

In order to make the information more legible, change your left and right margins to 1". You may have to put in some returns at the ends of the lines in the appropriate places to make it easier to read.

Tentative Schedule For Professional Transportation Bulletins

ACTIVITY	PTB 140	PTB 141	PTB 142	PTB 143	PTB 144
PUBLISH PTB	20-Apr-06	20-Jul-06	12-Oct-06	11-Jan-07	05-Apr-07
STATEMENTS OF INTEREST ARE DUE	04-May-06	03-Aug-06	26-Oct-06	25-Jan-07	19-Apr-07
SELECTION MEETING	28-Jun-06	04-Oct-06	03-Jan-07	28-Mar-07	20-Jun-07

E-mail Instructions for Completing Statements of Interest for Electronic Submittal

We require Statements of Interest (SOI) to be submitted through the e-mail system using Adobe Acrobat 4.0 version or greater.

Electronic submittals should be made to the Central Office only. The Central Office will forward the necessary consultant information to the Districts and other Bureaus or Divisions. All electronic submittals should be addressed to SOIPTB@dot.il.gov.

Each prequalified consultant firm has been assigned a unique 2 to 6 character Firm Name Code which must be used when submitting electronic Statements of Interest.

It is important that your e-mail appear exactly like the attached sample described below:
(Note: ABC Engineering is used for example purposes only.)

- The Subject Line **must** read: FIRM NAME, PTB NUMBER, ITEMS

(Example: ABC Engineering PTB 122, Items 2, 15, & 22) If there will be more than one e-mail please note as follows: 1 of the total number etc.

(No additional data or extra characters -- # signs, parentheses, etc. -- should appear in the subject line.)

- The first line of your e-mail should indicate your Firm Name, PTB and Item Number(s) on which your firm is submitting.

(Example: ABC Engineering has submittals for PTB 122, Items 2, 15, and 22.)

- The second line should list the name and phone number of your firm's contact person.
- Each attachment must be labeled as indicated below:

1) For each Item on which you are submitting, use your 2-6 character Firm Name Code, immediately followed by the 2-digit Item Number (i.e., 01 through 99).

(Example: ABCENG02.pdf)

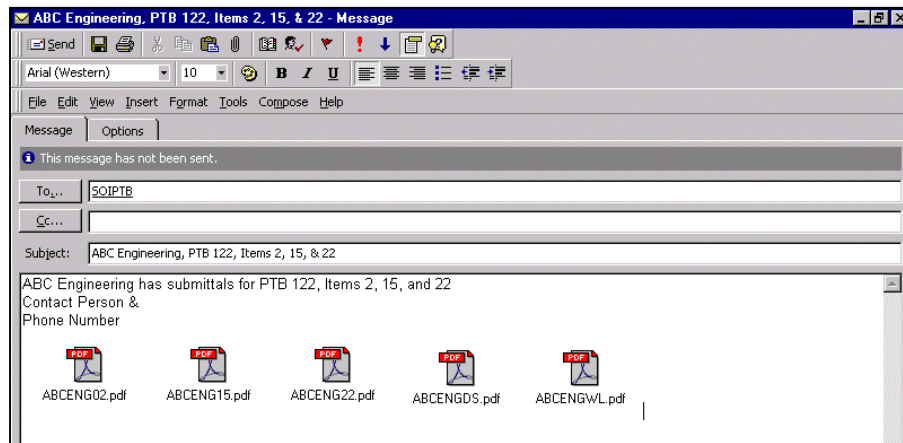
2) For your firm's Current Obligation Form, use your 2-6 character Firm Name Code, followed by WL.

(Example: ABCENGWL.pdf)

3) For your firm's Disclosure Forms, use your 2-6 character Firm Name Code, followed by DS.

(Example: ABCENGDS.pdf)

Please review the following example:



- ABCENG02, ABCENG15 and ABCENG22 are the Statements of Interest for the submitted Items and must include Exhibit A. Following Exhibit A, include resumes of the key management personnel and project staff listed in Exhibit A. If Exhibit B is required, include it next, followed by resumes of individuals listed on page 2 of Exhibit B.
- ABCENGWL is the Current Obligation Form. Only one copy of the Current Obligation Form is required. Do not send the instructions.
- ABCENGDS is the Disclosure Forms. Include a cover sheet with PTB #___ & Item(s) ____, Form A, Form B and Form for Offerors That Have Previously Submitted Form A. Only one copy of the Disclosure Forms is required. Do not send the instructions.

The size limitation on an incoming e-mail is 2 MB. If you exceed this limit, you must separate contents into multiple e-mail. Identify the number of e-mails being sent, (i.e. 1 of 3) Scanned images, color graphics, and photographs which are converted to Adobe Portable Document Files (PDF) can be very large.

Signatures must be scanned, then cut/copied and pasted into the appropriate signature blocks. The file should then be converted to a PDF.

The Exhibits, Current Obligation and Disclosure Forms are available as word documents and should be downloaded from our web-site: <http://www.dot.il.gov/desenv/deform.html> The bookmarks for the Exhibits, Current Obligations and Disclosure forms are also linked to the web-site.

The Word documents are labeled as follows:

Exhibits = EXHAB
Current Obligation Form = CURRENT OBLIGATIONS
Disclosure Forms = DISC2

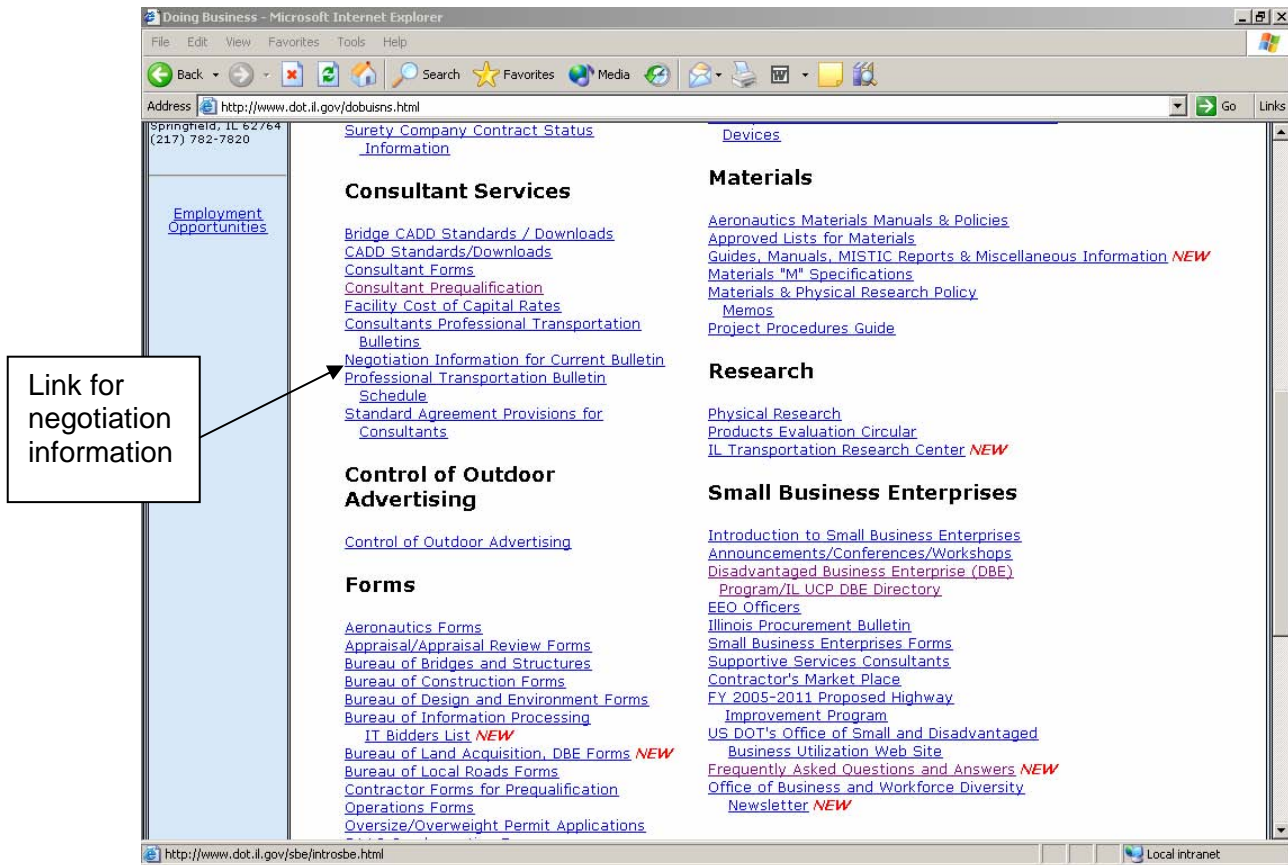
Complete the Word documents then convert them to Adobe PDF for the submittal.

Do not send zipped files, as we do not have the software to open them.

If you have questions about electronic submittals, please contact Carrie Kowalski at KOWALSKICL@dot.il.gov.

NOTICE

Proposed Negotiation Meeting information for Items will be available at the following link: <http://www.dot.il.gov/dobuisns.html>



- **Region 1**
- **Diane O'Keefe**
 - **District One**
 - **Items 1-6**
- **Region 2**
- **Gregory Mounts**
 - **District 2**
 - **Items 7-12**
- **Region 3**
- **Joseph Crowe**
 - **District 4**
 - **Items 13**
 - **District 5**
 - **Item 14**
- **Region 4**
- **Christine Reed**
 - **District 6**
 - **Item 15**
 - **District 7**
 - **Item 16**
- **Region 5**
- **Mary Lamie**
 - **District 8**
 - **Items 17-18**
 - **District 9**
 - **Items 19-20**
- **Bureau of Railroads**
- **John Schwalbach**
 - **Item 21**
- **Bureau of Design and Environment**
- **Michael Hine**
 - **Item 22-23**

NOTICE **CONSULTANT PREQUALIFICATION** **SUBMITTAL TIMES**

For firms currently prequalified, the entire Statement of Experience and Financial Condition is required to be submitted every three (3) years.

Consultant firms are required to submit the Corporate and Financial portion of the Statement of Experience and Financial Condition annually.

Firms are required to report to this office any additions or deletions of licensed professional staff or any other key personnel that would affect the firm's prequalification in a particular category. Notice of changes must be submitted within 15 calendar days of the change.

Firms may also continue to request additional categories of prequalification at any time.

The following schedule is attached for your use:

Firm Name beginning with:	2006 Submittal	2007 Submittal	2008 Submittal
A through E	Corp. & Financial	Entire SEFC	Corp. & Financial
F through N	Corp. & Financial	Corp. & Financial	Entire SEFC
O through Z	Entire SEFC	Corp. & Financial	Corp. & Financial

The Corporate and Financial Portion of the Statement of Experience and Financial Condition consists of pages 1, 2 and 10 through 20.

PTB # _____ & Item(s) # _____

**NOTICE OF
DELINQUENT PAYMENT**

Delinquent Payment. The CONSULTANT certifies that it, or any affiliate, is not barred from being awarded a contract under 30 ILCS 500. Section 50-11 prohibits a person from entering into a contract with a State agency if it knows or should know that it, or any affiliate, is delinquent in the payment of any debt to the State as defined by the Debt Collection Board. Section 50-12 prohibits a person from entering into a contract with the State agency if it, or any affiliate, has failed to collect and remit Illinois Use Tax on all sales of tangible personal property into the State of Illinois in accordance with the provisions of the Illinois Use Tax Act. The CONSULTANT further acknowledges that the contracting State agency may declare the contract void if this certification is false or if the CONSULTANT or any affiliate is determined to be delinquent in the payment of any debt to the State during the term of the contract.

I certify that _____ is in compliance with the Delinquent Payment Statement
(FIRM)

as stated above. _____
(SIGNATURE & DATE)

A separate pdf. document must be submitted with the Statement of Interest for the prime and each known subconsultants the prime will be using.

Example:

Firm SOI CODE: (abcengDP.pdf) This would be one document containing the prime's statement of compliance and one for each subconsultants.

NOTICE FOR METHOD OF CONTRACTING

Currently we pay for engineering consultant projects using the DLM method of contracting. For any project advertised after December 1, 2005, FHWA will not participate in projects using the DLM method of payment. With the new Federal transportation bill and to allow greater flexibility with funds, we are exploring the option of using the Cost Plus Fixed Fee Method (CPFF) of compensation for our consulting engineering projects. The advertisements contain both payment options so the issues can be examined and the best payment method will be determined at selection on April 5, 2006 and discussed at the initial meeting for each item.

The following paragraph has been included in the Professional Transportation Bulletin Items:

“This project may utilize the **Direct Labor Multiple** (DLM) or the **Cost Plus Fixed Fee** (CPFF) method of contracting. The method of contracting will be determined at the initial meeting. “

NOTE:

Upper limit of compensation:

CPFF: = Direct Labor + Direct Costs + Overhead + Fee
= DL+ DC + Actual OH*DL + Fee

Where Fee = 14.5% [DL (2.24 + R) + DC (in house)];
(approximately equal to the 2.8 DLM)

NOTICE

Mobilization on Phase 3 Consultant Contracts

As of December 8, 2005 mobilization may be negotiated on Phase 3 contracts. Mobilization is a negotiated amount based on the demonstrated need (up to 3% of the upper limit of labor in the agreement), which a consultant may invoice the department for upon execution of the agreement. Half of the mobilization amount will then be deducted from the invoice billing at 25% of the project's completion and the second ½ from the invoice billing for 50% of the project's completion.

Note: This is **not** an additional amount of compensation above the prime agreement amount.

Implementation:

- Phase 3 contracts only
- Firm must show during negotiations, the need for mobilization based upon demonstrated costs to be incurred prior to commencement of performance of agreement services.
- Initially the mobilization will not be available on federally funded consultant agreements,
- Mobilization will be eligible in the Start-up Agreements. The amount shown will be no more that 3% of the Start-up Agreement amount. That amount could be invoiced immediately upon execution of the start-up agreement. The remainder of the mobilization would be specified in the prime agreement and invoiced upon execution of the prime agreement.
- New Invoices for phase 3 contracts will be developed for use for contracts with mobilization. The invoice will show the total mobilization in the contract, the outstanding mobilization balance before the current invoice and the outstanding balance after the current invoice.
- The mobilization dollar amount will be shown in the phase 3 contracts and the following clause will be added to contracts revising the Standard Agreement for Consultant Services:

New Section 2.81 (h):

2.81 PARTIAL PAYMENTS/INVOICES

- h) Construction Engineering Agreements may include a provision for mobilization. If mobilization has been negotiated with the CONSULTANT as part of the method of payment; the mobilization shall be made and recovered in accordance with the provisions of this subsection. The mobilization amount negotiated shall be no more than 3% of the labor upper limit of compensation specified in Section 4 of the Prime Agreement. Upon execution of the AGREEMENT, the CONSULTANT may invoice for the mobilization amount. After payment, half of the mobilization shall be shown as a deduction from the invoice billing at 25% of the project's completion and the second half from the invoice billing for 50% of the project's completion.

Introduction

STATE OF ILLINOIS
Department of Transportation
2300 South Dirksen Parkway
Springfield, Illinois 62764

SPECIAL PROFESSIONAL TRANSPORTATION BULLETIN
January 19, 2006

This bulletin is the official notice of needed professional services for the Illinois Department of Transportation (IDOT).

This bulletin is sent to each professional consultant on IDOT's prequalified list. A Professional firm who is not prequalified may obtain the necessary information and forms to become prequalified from the INTERNET at: <http://www.dot.gov.il/Doing Business/Consultant Services/Consultant Prequalification>.

This is not an invitation for bids. Firms properly prequalified for any of the projects listed herein may indicate their desire to be considered for selection by submitting a Statement of Interest for the project.

IDOT shall not discriminate on the basis of race, color, national origin, or sex in the award and performance of any DOT-assisted contract or in the administration of its DBE Program or the requirements of 49 CFR part 26. IDOT shall take all necessary and reasonable steps under 49 CFR part 26 to ensure nondiscrimination in the award and administration of DOT-assisted contracts.

STATEMENTS MUST BE RECEIVED BY THE BUREAU OF DESIGN AND ENVIRONMENT AT THE ABOVE ADDRESS AND IF APPLICABLE, THE APPROPRIATE DISTRICT ENGINEER OR BUREAU CHIEF PRIOR TO 4:30 P.M. LOCAL TIME, February 2, 2006. STATEMENTS RECEIVED AFTER THIS TIME WILL NOT BE CONSIDERED.

The selection of professional consultants by IDOT is not based on competitive bidding but on the firm's professional qualifications, experience and expertise of key personnel to be assigned to the project with consideration also given to:

- 1) Ability to complete the work in the time required and the firm's existing workload.
- 2) The firm's proximity to the project, when important.
- 3) Extent of work which must be subcontracted by the firm and their proposed method of accomplishing the project objectives.
- 4) Financial evaluation of the firm and its accounting methods.
- 5) Performance rating for past work done for IDOT, if applicable.

All members of the Consultant Selection Committee will be **unavailable** to discuss specifics of projects listed herein during the two-week period preceding the Selection Committee Meeting.

Departmental procedures ensure that all members of the Consultant Selection Committee are provided with detailed information concerning all Statements of Interest submitted by all consultants. Please do not send letters expressing your interest in various projects and/or correspondence concerning your firm via Overnight/Federal Express mail to members of the Consultant Selection Committee.

Guidelines for Submitting Statements of Interest (SOI)

Firms must be prequalified in all of the advertised areas listed in the project advertisement even if they plan to subcontract part of the project, except where noted in a specific project advertisement.

Prequalified firms may indicate their desire to be considered for selection on any of the projects listed herein by submitting a separate Statement of Interest (SOI) for each project that includes the following:

- 1) A cover sheet, clearly identifying the PTB Number, Item Number, Firm Name, and IDHR number. No additional information is required on the cover.
- 2) A brief statement of the firm's interest in performing the work. (Should not be longer than 2 pages)
- 3) A Table of Contents with page numbers, identifying the approach, exhibits, resumes, etc.
- 4) No color graphics/photographs should be included in the submittal because of the size limitation on incoming e-mail is 2 MB.
- 5) Complete Exhibit A as follows: (This should follow the Table of Contents in the SOI)
 - a) List the required key personnel to match required prequalification categories and any additional personnel requirements designated in the project advertisement.
 - b) Attach resumes of all personnel listed in a) above. Individual resumes should not exceed two pages and must be relevant to the expertise required for the specific project.
 - c) Designate the estimated time required to complete the project using the personnel presented. A completion date and/or number of months to complete the project should also be provided.
 - d) Identify proposed subconsultants and item(s) of work they will perform. Subconsultants must be prequalified in the area of work they will be performing.
- 6) Projects involving Location Design Studies (Reconstruction/Major Reconstruction and New Construction/Major Reconstruction) and all Environmental Reports (Environmental Assessment and Environmental Impact Statements) require completion of **Exhibit B**.
- 7) Experience of the staff or firm in accomplishing similar types of work should be shown for only the most recent projects and should be concise and relevant to the expertise required for the specific project. If there are several projects with the same work completed, then one summary would be adequate with each location and the project manager noted for each. This information should be shown at the end of the SOI.
- 8) Any other information specifically requested in the project advertisement should be included where specified in the submittal.
- 9) The Instructions for completing the Current Obligation documents immediately precede the Current Obligation forms. The Current Obligation Forms should be a separate document from the SOI. Only one copy, sent to the Central Bureau of Design and Environment, is required.
- 10) Instructions for completing **Forms A** and **B** are included on pages 1 and 2 immediately preceding **Forms A** and **B**. Disclosure Forms should be a separate document from the SOI. A cover should be provided with a statement similar to the following: "*The **Form A** disclosures (or Certification Statement) and the **Form B** disclosures are being submitted for PTB # _____, Item(s): _____.*" Only one copy, sent to the Central Bureau of Design and Environment, is required. In addition, **Form B** should not include IDOT projects, since this information is already included in the **Current Obligations**.

Guidelines for Submitting Statements of Interest (SOI)

11) Exhibit A, Exhibit B, the Current Obligations Form, and the Disclosure Forms are available as word documents on our web site: <http://www.dot.il.gov/desenv/deform.html>. The Disclosure is labeled as DISC2. The Exhibits are labeled as EXHAB. The Current Obligations are labeled CURRENT OBLIGATIONS.

The following addresses may be used when a hard copy of the SOI is requested in the advertisement:

Illinois Department of Transportation
Ms. Cheryl Cathey
Bureau of Design and Environment
Attn: Consultant Unit (Room 330)
2300 South Dirksen Parkway
Springfield, Illinois 62764

Regional/District copies should be addressed as follows:

Region 1

Ms. Diane O'Keefe
District 1
201 West Center Court
Schaumburg, IL 60196

Region 2

Mr. Gregory Mounts
District 2
819 Depot Avenue
Dixon, IL 61021

Mr. Gregory Mounts
District 3
700 East Norris Drive
P.O. Box 697
Ottawa, IL 61350

Region 3

Mr. Joe Crowe
District 4
401 Main Street
Peoria, IL 61602

Mr. Joe Crowe
District 5
Route 133 West
P.O. Box 610
Paris, IL 61944

Region 4

Ms. Chris Reed
District 6
126 East Ash St.
Springfield, IL 62704

Ms. Chris Reed
District 7
400 West Wabash
Effingham, IL 62401

Region 5

Ms. Mary Lamie
District 8
1102 Eastport Plaza Drive
Collinsville, IL 62234

Ms. Mary Lamie
District 9
State Transportation Building
P.O. Box 100
Carbondale, IL 62903

To verify that the Department has received your Statements of Interest you may call (217)785-4784.

Table Of Contents
PTB 139

<u>Item #</u>	<u>County</u>	<u>Description</u>
<u>Region 1 / District 1</u>		
1.	Lake	Provide Phase II Services for IL-60 Structure Over I-94.
2.	Various	Provide Phase II Services for Various Land Acquisition Projects.
3.	Various	Provide Phase I Services for Various Safety Related Projects.
4.	Various	Provide Phase II Services for Various Traffic And Traffic Signal Projects.
5.	Various	Provide Project Manager Services for Various Drainage and Hydraulic Studies.
6.	Various	Provide Phase II Services for Various Structure and Roadway Related Projects.
<u>Region 2 / District 2</u>		
7.	Winnebago	Provide Phase II Services for US Business Route 20 from Pierpont Ave. to Kilburn Ave. in Rockford.
8.	Ogle	Provide Phase II Services for I-39 Weigh Station, Located 2.0 Miles North of IL-38.
9.	Various	Perform Land and Route Surveys for Various Projects.
10.	Various	Perform Land and Route Surveys for Various Projects.
11.	Various	Provide Phase I and/or II Services for Various Projects
12.	Winnebago	Provide land surveying for US Business Route 20 from Pierpont to Kilburn Ave in Rockford.
<u>Region 3 / District 4</u>		
13.	Various	Perform Land and Route Surveys for Various Projects.
<u>Region 3 / District 5</u>		
14.	Various	Provide Phase I and/or II Services for Various Projects.
<u>Region 4 / District 6</u>		
15.	Brown & Schuyler	Provide Phase II Services for US-24 Structure over the Lamoine River, located just north of Ripley.

<u>Item #</u>	<u>County</u>	<u>Description</u>
<u>Region 4 / District 7</u>		
16.	Various	Provide Phase I and/or II Services for Various Projects.
<u>Region 5 / District 8</u>		
17.	Various	Provide Utility Coordination for Various Projects
18.	Various	Provide Phase I and/or II Services for Various Projects.
<u>Region 5 / District 9</u>		
19.	Hamilton	Provide Phase II services for Structure replacement/rehabilitation and related roadway work on IL 142.
20.	Wabash & Wayne	Provide Phase II services for Structure replacement/rehabilitation and related roadway work on IL 1 and US 45.
<u>Bureau of Railroads</u>		
21.	Various	Project Manager for Phase I and II services for the CREATE Project.
<u>Bureau Of Design and Environment</u>		
22.	Various	Perform Statewide Waste Assessment Investigations Throughout the State.
23.	Various	Provide aerial photography and photogrammetric products for the southern area of Illinois.

1. **Job No. D-91-230-06, FAP 335 (IL 60) Structure over I-94 (Tri-State Tollway), Lake County, Region One/District One.**

This project may utilize the **Direct Labor Multiple (DLM)** or the **Cost Plus Fixed Fee (CPFF)** method of contracting. The method of contracting will be determined at the initial meeting.

This project requires 15% DBE participation.

For **DLM** the **Complexity Factor** for this project is **0.003**.

For **CPFF** the **Complexity Factor** for this project is **0.035**.

The Consultant who is selected for this project and all subconsultants the prime Consultant will be using are scheduled to attend an initial meeting on **April 7, 2006 at 1:00 P.M.** at the Region One/District One Office in **Schaumburg**.

Phase II engineering services are required for the preparation of contract plans, specifications and estimates for structure on IL 60 over I-94. All work for this project will be in English units.

The following structure is included in this project, S.N. 049-9902 (IL 60 over I-94).

The department will furnish the Consultant with Project Report, Bridge Condition Report, available microfilm, CADD files and survey data.

The estimated construction cost for this project is \$17,000,000. The Consultant's work includes the preparation of contract plans, specifications and estimates, including TS&L, Structure and Roadway plans and all other work required to complete the project. This work must be completed within 18 months after authorization to proceed.

Key personnel listed on **Exhibit A** for this project must include:

- The person who will assume the duties of Project Manager for all aspects of the work documents (must be an Illinois Licensed Professional Engineer).
- The person who will perform the duties of Project Engineer, that individual in charge who is directly involved in the development of the contract documents (must be an Illinois Licensed Professional Engineer).
- The person who will perform the work in the area of structure plan preparation documents (must be an Illinois Licensed Structural Engineer). In addition, the staff performing this work must be identified.
- The person who will perform/supervise the work in the area of drainage calculations and preparation of the Drainage Report (must be an Illinois Licensed Professional Engineer).
- The person who will perform the QC/QA review work of all milestone submittal documents (must be an Illinois Licensed Professional Engineer for roadway work and must be an Illinois Licensed Structural Engineer for structural work with adequate plan review experience).

Firms must be prequalified in the following categories to be considered for this project:

Highways (Roads & Streets)
Structures (Highway: Typical)

Statements of Interest, including resumes of the key people noted above, must be submitted electronically to the Central Bureau of Design and Environment at the following address:
SOIPTB@dot.il.gov.

2. **Job No. D-91-228-06, Phase II Work for Various Land Acquisition Projects, Various Counties, Region One/District One.**

This project may utilize the **Direct Labor Multiple** (DLM) or the **Cost Plus Fixed Fee** (CPFF) method of contracting. The method of contracting will be determined at the initial meeting.

The **Complexity Factor** for this project is **0**.

The Consultant who is selected for this project and all subconsultants the prime Consultant will be using are scheduled to attend an initial meeting on **April 6, 2006 at 10:30 A.M.** at the Region One/District One Office in **Schaumburg**.

Phase II services are required for this contract to augment the existing staffing of the Land Acquisition Bureau in District One. The Consultant will be required to supply personnel with experience in Land Survey, Appraisal, Condemnation, Property Management and acquisition support. Work orders under the blanket agreement will be negotiated and authorized by the department on an as-needed basis. All work for this project may be in either English or metric units.

The department will furnish the Consultant with applicable department policies and procedures.

The Consultant's work may include Plat and Legal review, Appraisal services and review, prepare condemnation packages, Property management and acquisition support. The completion date for this contract will be 24 months after authorization to proceed. The agreement with the Consultant will have an option for renewal by the department for an additional twelve months.

Key personnel listed on **Exhibit A** for this project must include:

- The person who will be in charge of land surveys (must be an Illinois Licensed Professional Surveyor).

Firms must be prequalified in the **Special Services (Land Surveys)** category to be considered for this project.

Statements of Interest, including resumes of the key people noted above, must be submitted electronically to the Central Bureau of Design and Environment at the following address: SOIPTB@dot.il.gov.

3. **Job No. P-91-199-06, Various Safety Assessments, Various Routes, Various Counties, Region One/District One.**

This project may utilize the **Direct Labor Multiple (DLM)** or the **Cost Plus Fixed Fee (CPFF)** method of contracting. The method of contracting will be determined at the initial meeting.

The **Complexity Factor** for this project is **0**.

The Consultant who is selected for this project and all subconsultants the prime Consultant will be using are scheduled to attend an initial meeting on **April 10, 2006 at 9:00 A.M.** at the Region One/District One Office in **Schaumburg**.

Phase I engineering services are required for the preparation of traffic engineering capacity and accident studies for potential safety improvement projects throughout District One. This may include review of the District's high accident locations or other locations based on recent crash experience. Work is anticipated to include the necessary collection of all field data such as digital color photos, condition diagrams and manual turning movement (full classification) traffic count data (as needed), and relevant crash data. This effort may include the retrieval of Illinois Traffic Crash Reports from local enforcement agencies as well as preparation of collision diagrams. Also, anticipated are traffic engineering analyses such as, crash analysis, traffic signal warrant or capacity studies, or sight distance studies to determine low cost countermeasures for crash reduction. Reviews include intersections as well as roadway segments. If candidate safety improvement projects are developed, a cost estimate and benefit-cost analysis may be required for each candidate project to determine project eligibility for the annual Highway Safety Improvement Program (HSIP). Work orders under the blanket agreement will be negotiated and authorized by the department on an as-needed basis. All work for this project will be in English units.

The department will furnish the Consultant with locations to be reviewed and traffic crash data compiled by the Division of Traffic Safety for most recent 3-years.

Key personnel listed on **Exhibit A** for this project must include:

- The person who will assume the duties of Project Manager for all aspects of the work documents (must be an Illinois Licensed Professional Engineer).
- The person who will perform the duties of Project Engineer, that individual in charge who is directly involved in the development of the contract documents (must be an Illinois Licensed Professional Engineer).
- The person who will perform the QC/QA review work of all milestone submittal documents (must be an Illinois Licensed Professional Engineer).
- The person(s) who will be directly performing the required work.

The Consultant's work includes the necessary documentation to determine countermeasures for crash reduction. The completion date for this contract will be 18 months after authorization to proceed. The agreement with Consultant will include an option for renewal by the department for an additional 18 months.

Firms must be prequalified in the **Special Plans (Traffic Studies)** category to be considered for this project.

Statements of Interest, including resumes of the key people noted above, must be submitted electronically to the Central Bureau of Design and Environment at the following address: SOIPTB@dot.il.gov.

4. **Job No. D-91-200-06, Phase II Traffic Projects, Various Routes, Various Counties, Region One/District One.**

This project may utilize the **Direct Labor Multiple (DLM)** or the **Cost Plus Fixed Fee (CPFF)** method of contracting. The method of contracting will be determined at the initial meeting.

The **Complexity Factor** for this project is **0**.

The Consultant who is selected for this project and all subconsultants the prime Consultant will be using are scheduled to attend an initial meeting on **April 12, 2006 at 9:00 A.M.** at the Region One/District One Office in **Schaumburg**.

Phase II engineering services are required for all work associated with the complete preparation of plans, special provisions and estimates for traffic signal projects throughout District One. The proposed projects may consist of installation of new traffic signals, modifications and modernization of existing traffic signal systems, including temporary signal and system interconnect design. Project work may include site inspections, field measurements, performing all design functions and calculations, including time space diagrams where traffic signals will be interconnected. The project work may also consist of preparing contract drawings and special provisions, and tabulating of material quantities. Traffic signal design shall conform to current issues of the following: State Standard Specifications, MUTCD for streets and highways, and all applicable NEC, NEMA, AASHTO, FHWA and District 1 Standards and Guidelines. Attendance for planning and coordination conference and field investigation with IDOT, FHWA, and Railroad representatives is anticipated. Work order under the blanket agreement will be negotiated and authorized by the department on an as needed basis. All work for this project may be in either English or metric units.

The department will furnish the Consultant with any available project reports, existing plans, existing and proposed traffic volume, accident data and topo-survey when available.

The estimated construction cost for these projects may range from \$50,000 to \$1,000,000. The completion date for this contract will be 36 months after authorization to proceed. The agreement with the Consultant will include an option for renewal by the department for an additional 18 months.

Key personnel listed on **Exhibit A** for this project must include:

- The person who will assume the duties of Project Manager for all aspects of the work documents (must be an Illinois Licensed Professional Engineer).
- The person who will perform the duties of Project Engineer, that individual in charge who is directly involved in the development of the contract documents (must be an Illinois Licensed Professional Engineer).
- The person who will perform the duties of Traffic Signal Engineer, that individual who is directly involved in traffic signal design, modification and modernization. The Traffic Signal Engineer shall have working knowledge and extensive experience in traffic signal design and operation.

- The person who will perform the QC/QA review work of all milestone submittal documents (must be an Illinois Licensed Professional Engineer).

Statements of Interest must also include the Consultants relevant traffic signal projects completed by the firm for IDOT District One within the past four years by a member of the Consultant's current staff. List all applicable projects in the Statements of Interest.

Firms must be prequalified in the **Special Plans (Traffic Signal)** category to be considered for this project.

Statements of Interest, including resumes of the key people noted above, must be submitted electronically to the Central Bureau of Design and Environment at the following address: SOIPTB@dot.il.gov.

5. **Job No. P-91-140-06: Phase I Engineering Program Management Work, Various Drainage Studies and Hydraulic Reports, for Various Routes, Various Counties, in Region One/District One.**

This project may utilize the **Direct Labor Multiple (DLM)** or the **Cost Plus Fixed Fee (CPFF)** method of contracting. The method of contracting will be determined at the initial meeting.

For **DLM** the **Complexity Factor** for this project is **0.003**.

For **CPFF** the **Complexity Factor** for this project is **0.035**.

The Consultant who is selected for this project and all subconsultants the prime Consultant will be using are scheduled to attend an initial meeting on **April 13, 2006** at **10:30 A.M.** at the Region One/District One Office in **Schaumburg**.

A Program Management (PM) Consultant is required for Phase I engineering services. The PM Consultant will manage various Phase I drainage studies and hydraulic reports prepared by other engineering Consultants under various/various contracts. Work orders under the blanket agreement will be negotiated and authorized by the department on an as-needed basis. All work for this contract may be in English or Metric units.

The PM Consultant is prohibited from managing projects for which they are contracted with the Department for Phase I Engineering. Additionally, the PM Consultant, if selected for Phase II Engineering work, may not be managed by a consultant that they managed during Phase I Engineering.

The completion date for this contract will be 18 to 24 months after the authorization to proceed. The agreement with the Consultant will include an option for renewal by the department for an additional 18 to 24 months.

The PM Consultant is expected to perform work similar to an IDOT Consultant Drainage Studies Manager and IDOT Hydrology & Hydraulics Manager. The PM Consultant will report to Hydraulics Section Chief. Key staff from the PM Consultant will be expected to perform work in the District offices from two to four days a week as required. The work may include engineering, management, public coordination, administrative services, and other work as necessary to ensure assigned projects are completed in accordance with established schedules and budgets. It is anticipated that projects of various complexity will be assigned to the PM Consultant. These projects may include, but not be limited to:

- Manage and review Phase I Drainage Studies and Hydraulic Reports which are assigned and prepared under contract with other Consultant engineering firms.
- Facilitate and expedite the resolution of IDOT drainage criteria and drainage issues, utilizing necessary resources within the department.
- Review Hydraulic Reports and scour evaluations which meet criteria for issuance of construction permits by Illinois Department of Natural Resources, Office of Water Resource.
- Manage and review drainage Investigation reports prepared by IDOT and/or its' Consultants; considering appropriate engineering, ecological, and legal requirements in response to inquiries from local agencies, watershed management agencies, District One Bureau of Maintenance, and the public.

- Review assigned site development permits, utility permits, and local agency drainage plans as to conform to policies, practices & procedures, and preserving the integrity of the highway right-of-way.
- Manage and track project-level cost, schedule, budget requirements, and coordination with program-level and assigned project-level controls personnel.
- Coordinate, Validate, and monitor project scope.
- Identify and implement all necessary coordination and communication within and outside the department; to IDOT and stakeholders as required.
- Hold regular progress meetings and briefings for IDOT including FHWA where details of project and progress are presented.
- Perform all other work as necessary and required to manage Phase I engineering for Drainage Studies and Hydraulic Reports.

IDOT will provide applicable department policies and procedures to the PM Consultant.

Key personnel listed on **Exhibit A** for this project must include:

- The person who will assume the duties of Drainage Manager, in charge of all aspects of the work documents. This individual must be an Illinois Licensed Professional Engineer with a minimum of five (5) years experience dealing with highway related drainage problems as well as hydrologic and hydraulic modeling.
- The person who will assume the duties of Drainage Engineer for day to day program work relative to development of the Location Drainage Studies, Hydraulic Reports, and Drainage Investigations. This individual must be an Illinois Licensed Professional Engineer with a minimum of three (3) years experience dealing with highway hydrologic and hydraulic modeling.
- The person who will perform the QC/QA review work of all milestone submittal documents. This individual must be an Illinois Licensed Professional Engineer.

The use of hydraulic and hydrologic computer programs currently accepted by the Division of Highways is required to perform drainage assignments. Resumes of Drainage Managers and Drainage Engineers must meticulously state hydraulic and hydrologic modeling experience.

Statements of Interest must provide a proposed organizational chart identifying the PM Consultant team and its respective percentage of time commitment. This statement must also identify the approach the firm would take on this project and provide a summary of the pertinent experience of the firm managing Phase I highway projects.

Firms must be prequalified in the following categories to be considered for this project:

Special Studies (Location Drainage)
Hydraulic Reports (Waterways: Complex)
Hydraulic Reports (Pump Stations)

Statements of Interest, including resumes of the key people noted above, must be submitted electronically to the Central Bureau of Design and Environment at the following address: SOIPTB@dot.il.gov.

6. **Job No. D-91-198-06, Phase II Various Projects, Various Routes, Various Counties, Region One/District One**

This project may utilize the **Direct Labor Multiple (DLM)** or the **Cost Plus Fixed Fee (CPFF)** method of contracting. The method of contracting will be determined at the initial meeting.

This project requires 20.00% DBE participation.

For **DLM** the **Complexity Factor** for this project is **0.003**.

For **CPFF** the **Complexity Factor** for this project is **0.035**.

The Consultant who is selected for this project and all subconsultants the prime Consultant will be using are scheduled to attend a negotiating meeting on **April 7, 2006 at 10:00 A.M.** at the Region One/District One Office in **Schaumburg**.

Phase II engineering services are required for preparation of contract plans and specifications for structure work and related roadway work including 3-P or 3-R projects for projects throughout District One. Work orders under a blanket agreement will be negotiated and authorized by the department on an as needed basis. All work for this project will be in English units.

The Consultant's work may include field surveys, geotechnical borings and analysis, electrical engineering, and the preparation of bridge replacement plans, bridge repair plans, multiple and single cell box culvert replacement or extension plans, retaining wall plans, and general structural work plans and 3-P or 3-R improvement plans. The Consultant's work may also include contract plans, special provisions, and estimates and construction codes including highway drainage design, erosions control plans, and all other work as assigned.

The department will furnish the Consultant with copies of project reports, location drainage studies, bridge condition reports, available microfilm plans, pavement design, right-of-way plans, and any other available information.

The Consultant shall prepare the TS&L drawings and structure plans as required for bridge replacement, bridge rehabilitation, bridge repairs, multiple or single cell culvert repairs, replacements or extensions, retaining wall new construction, replacements or repairs, junctions boxes, headwalls, permanent sheet piles and general structures.

The estimated individual construction cost for these projects may range from \$200,000 to \$2,000,000. The completion date for this contract will be 12 months after authorization to proceed. The agreement with the Consultant will have an option for renewal by the department for an additional 12 months.

Key personnel listed on **Exhibit A** for this project must include:

- The person who will assume the duties of Project Manager for all aspects of the work documents (must be an Illinois Licensed Professional Engineer).
- The person who will perform the duties of Project Engineer, that individual in charge who is directly involved in the development of the contract documents (must be an Illinois Licensed Professional Engineer).

- The person who will perform the work in the area of structure plan preparation documents (must be an Illinois Licensed Structural Engineer). In addition, the staff performing this work must be identified.
- The person who will perform/supervise the work in the area of drainage calculations and preparation of the Drainage Report (must be an Illinois Licensed Professional Engineer).
- The person who will perform the QC/QA review work of all milestone submittal documents (must be an Illinois Licensed Professional Engineer for roadway work and must be an Illinois Licensed Structural Engineer for structural work with adequate plan review experience).
- The person who will be in charge of surveys (must be an Illinois Professional Licensed Surveyor).

Firms must be prequalified in the following categories to be considered for this project:

**Highways (Roads & Streets)
Structures (Highway: Typical)**

Statements of Interest, including resumes of the key people noted above, must be submitted electronically to the Central Bureau of Design and Environment at the following address: SOIPTB@dot.il.gov.

7. **Job No. D-92-121-01, FAP 303 (US Business 20), Phase II from Pierpont Ave. to Kilburn Ave., Winnebago County, Region Two/District Two**

This project may utilize the **Direct Labor Multiple (DLM)** or the **Cost Plus Fixed Fee (CPFF)** method of contracting. The method of contracting will be determined at the initial meeting.

This project requires 12.00% DBE participation.

The **Complexity Factor** for this project is **0**.

The Consultant who is selected for this project and all subconsultants the prime Consultant will be using are scheduled to attend a negotiation meeting on **April 7, 2006 at 10:00 A.M.** at the Region Two/District Two Office in **Dixon**.

Phase II Engineering services are required for the preparation of contract plans special provisions and estimates for the development of US BR 20 from Pierpont Ave. to Kilburn Ave. in the City of Rockford. The project consists of a four-lane section with a wide landscaped median from Pierpont Ave. to Avon St. and a re-alignment of a one-way couple from Avon St. to Kilburn Ave. along US BR 20. All work for this project will be in English units.

This project consists of reconstructing US BR 20. The improvements are anticipated to provide a continuous raised median with accommodations for left turning vehicles at selected locations, managing access by closing streets and consolidating access points, developing parallel street/alley system at selected locations and providing an adjacent multi-use path through the corridor. This project also includes building demolition along the corridor, development of upgraded signalized intersections, and intersection geometric improvements and any other work necessary to complete the contract plans.

The scope of the project is anticipated to include preparation of contract plans, including roadway plans, drainage plans, and traffic signal plans, drainage system design, special details, special provisions, quantities and cost estimates, and any surveys as necessary to update conditions along the alignment.

The department will furnish the Consultant with any available as-built plans, microfilm plans, aerial survey, approved reports, plans and intersection design studies, existing and proposed right-of-way locations, and any other available information.

The estimated construction cost for this project is \$16,100,000. It is estimated that Phase I public involvement activities will be completed in May of 2006, and Design Approval is anticipated in July of 2006. Phase II work must be completed within 12 months after authorization to proceed which is expected to be provided immediately upon notice of Design Approval.

Key personnel listed on **Exhibit A** for this project must include:

- The person who will assume the duties of Project Manager for all aspects of the work documents (must be an Illinois Licensed Professional Engineer).
- The person who will perform the duties of Project Engineer, that individual in charge who is directly involved in the development of the contract documents (must be an Illinois Licensed Professional Engineer).

- The person who will perform/supervise the work in the area of drainage calculations and drainage plans (must be an Illinois Licensed Professional Engineer).
- The person who will be in charge of route surveys (must be an Illinois Licensed Professional Engineer or an Illinois Professional Licensed Surveyor).
- The person who will perform the QC/QA review work for all milestone submittal documents (must be an Illinois Licensed Professional Engineer).

Firms must be prequalified in the **Highways (Roads & Streets)** category to be considered for this project.

Statements of Interest, including resumes of the key people noted above, must be submitted electronically to the Central Bureau of Design and Environment at the following address: SOIPTB@dot.il.gov

8. **Job No. D-92-074-03, FAI 39(I-39), Weigh Stations 2 miles north of IL 38, Ogle County, Region Two/District Two.**

This project may utilize the **Direct Labor Multiple (DLM)** or the **Cost Plus Fixed Fee (CPFF)** method of contracting. The method of contracting will be determined at the initial meeting.

This project requires 12.00% DBE participation.

The **Complexity Factor** for this project is **0**.

The Consultant who is selected for this project and all subconsultants the prime Consultant will be using are scheduled to attend a negotiation meeting on **April 6, 2006 at 10:00 A.M.** at the Region Two/District Two Office in **Dixon**.

Phase II Engineering services are required for the improvements of the I-39 weigh stations located 2.0 miles north of IL 38. This work is anticipated to include the location, design and specifications for a Changeable Message Sign system including single cell weigh-in-motion scale, modification of the existing geometrics, locating the scale house, multi-platform scales, locating signs, lighting, utilities, striping and employee parking. The weigh-in-motion scale used with the Changeable Message Sign system will be upgraded to supply a weight record to Automatic Vehicle Identification (AVI) Truck Pre-clearance System at a future date. This work will include architectural services for the plans for the scale house itself. The Capital Development Board will review architectural services. All work for this project will be in English units.

The Consultant's work will include development of a conceptual design alternative with cost estimates, plans, and special provisions. The interstate pavement must meet the requirements in Section 6 of ASTM E 1318-94 for a Type III System.

The estimated construction cost for this project is \$2,600,000. The Consultant's work may include basic data collection, field surveys, and preparation of type, size and location drawings (TSL), structure plans, roadway plans and all other work necessary to complete the final plans, special provisions and estimates. Phase II must be completed within 12 months after authorization to proceed

Key personnel listed on **Exhibit A** for this project must include:

- The person who will assume the duties of Project Manager for all aspects of the work documents (must be an Illinois Licensed Professional Engineer).
- The person who will perform the duties of the Project Engineer, that individual in charge who is directly involved in the development of the contract documents (must be an Illinois Licensed Professional Engineer).
- The person who will be in charge of land surveys (must be an Illinois Licensed Professional Surveyor).
- The person who will perform the QC/QA review work for all milestone submittal documents (must be an Illinois Licensed Professional Engineer)

Firms must be prequalified in the following categories to be considered for this project:

Highways (Roads & Streets)
Special Services (Architecture)

Statements of Interest, including resumes of the key people noted above, must be submitted electronically to the Central Bureau of Design and Environment at the following address:
SOIPTB@dot.il.gov.

9. **Job No. P-92-038-06, Land and Route Surveys, Various Routes, Various Counties, Region Two/District Two.**

This project may utilize the **Direct Labor Multiple** (DLM) or the **Cost Plus Fixed Fee** (CPFF) method of contracting. The method of contracting will be determined at the initial meeting.

The **Complexity Factor** for this project is **0**.

The Consultant who is selected for this project and all subconsultants the prime Consultant will be using are scheduled to attend an initial meeting on **April 10, 2006** at **10:00 A.M.** at the Region Two/District Two Office in **Dixon**.

Phase I engineering services are expected to consist of various route and land survey projects throughout District Two. Work orders under the blanket agreement will be negotiated and authorized by the department on as as-needed basis. All work may be in either English or metric units.

Engineering services are anticipated to consist of furnishing land surveying, field office assistance for surveys to establish or re-establish section corners, reference said corners to centerlines, preparation of a cover sheet, Right-of-Way Plats, Easement Plats, Premise Plats, legal descriptions, Monument Record Plats (copies of recorded Monument Record Plats to be furnished by the Consultant), section Corner Plat of Survey, and staking plans for projects up to 20 parcels or more throughout the District.

In addition, the Consultant selected may perform various route survey functions, including horizontal and vertical for aerial mapping projects and topographic surveys.

The department will furnish the Consultant with alignment data, Title Reports, Existing Right-of-Way Plats, and Proposed Right-of-Way requirements as each Work Order is negotiated.

The Consultant may be required to contact local land surveyors for their input and may be expected to obtain historic survey reference data. This work must be completed within 24 months after authorization to proceed. The agreement with the Consultant will have an option for renewal by the department for an additional 24 months.

Key personnel listed on **Exhibit A** for this project must include:

- The person in charge of Route Surveys (must be an Illinois License Professional Engineer or an Illinois Professional Licensed Surveyor)
- The person who will be in charge of Land Surveys (must be an Illinois Professional Licensed Surveyor).
- The person who will perform the QC/QA review work of all milestone submittal documents (must be an Illinois License Professional Engineer or an Illinois Professional Licensed Surveyor)

Firms must be prequalified in the following categories to be considered for this project:

Special Services (Land Surveys)
Special Services (Route Surveys)

Statements of Interest, including resumes of key people noted above, must be submitted electronically to the Central Bureau of Design and Environment at the following address:
SOIPTB@dot.il.gov.

10. **Job No. P-92-037-06, Land and Route Surveys, Various Routes, Various Counties, Region 2/District Two.**

This project may utilize the **Direct Labor Multiple (DLM)** or the **Cost Plus Fixed Fee (CPFF)** method of contracting. The method of contracting will be determined at the initial meeting.

The **Complexity Factor** for this project is **0**.

The Consultant who is selected for this project and all subconsultants the prime Consultant will be using are scheduled to attend an initial meeting on **April 11, 2006** at **10:00 A.M.** at the Region Two/District Two Office in **Dixon**.

Phase I engineering services are expected to consist of various route and land survey projects throughout District Two. Work orders under the blanket agreement will be negotiated and authorized by the department on as as-needed basis. All work may be in either English or metric units.

Engineering services are anticipated to consist of furnishing land surveying, field office assistance for surveys to establish or re-establish section corners, reference said corners to centerlines, preparation of a cover sheet, Right-of-Way Plats, Easement Plats, Premise Plats, legal descriptions, Monument Record Plats (copies of recorded Monument Record Plats to be furnished by the Consultant), section Corner Plat of Survey, and staking plans for projects up to 20 parcels or more throughout the District.

In addition, the Consultant selected may perform various route survey functions, including horizontal and vertical for aerial mapping projects and topographic surveys.

The department will furnish the Consultant with alignment data, Title Reports, Existing Right -of-Way Plats, and Proposed Right-of-Way requirements as each Work Order is negotiated.

The Consultant may be required to contact local land surveyors for their input and may be expected to obtain historic survey reference data. This work must be completed within 24 months after authorization to proceed. The agreement with the Consultant will have an option for renewal by the department for an additional 24 months.

Key personnel listed on **Exhibit A** for this project must include:

- The person in charge of Route Surveys (must be an Illinois License Professional Engineer or an Illinois Professional Licensed Surveyor)
- The person who will be in charge of Land Surveys (must be an Illinois Licensed Professional Surveyor).
- The person who will perform the QC/QA review work of all milestone submittal documents (must be an Illinois License Professional Engineer or an Illinois Professional Licensed Surveyor)

Firms must be prequalified in the following categories to be considered for this project:

Special Services (Land Surveys)
Special Services (Route Surveys)

Statements of Interest, including resumes of key people noted above, must be submitted electronically to the Central Bureau of Design and Environment at the following address:
SOIPTB@dot.il.gov.

11. **Job No. P-92-039-06, Phase I and/or Phase II Work for Various Projects, Various Counties, Region Two/District Two.**

This project may utilize the **Direct Labor Multiple** (DLM) or the **Cost Plus Fixed Fee** (CPFF) method of contracting. The method of contracting will be determined at the initial meeting.

The **Complexity Factor** for this project is **0**.

The Consultant who is selected for this project and all subconsultants the prime Consultant will be using are scheduled to attend a negotiating meeting on **April 7, 2006 at 10:00 A.M.** at the Region Two/District Two Office in **Dixon**.

Phase I and/or Phase II engineering services are required for Phase I and/or Phase II work on various projects in District Two. Work orders under the blanket agreement will be negotiated and authorized by the department on an as-needed basis. All work for this contract will be in English units.

The Phase I work, if required, may consist of conducting route surveys, hydraulic surveys, hydraulic analyses, geometric studies, and preparing Project Reports (anticipated to be Categorical Exclusion projects). This work may include data collection, development of alignment alternatives, cost estimates, traffic management analysis, accident analyses, type, size and location (TS&L) drawings, structure plans, and other related work and exhibits necessary to produce the Project Report.

The Phase II work, if required, may consist of conducting route surveys, land surveys, hydraulic analyses/reports, geometric studies, preparation of type, size and location drawings (TS&L), structure plans, roadway plans, and any other related work to complete final plans, special provisions and estimates.

Projects may consist of simple patching and resurfacing, bridge repair, bridge rehabilitation, bridge replacement, widening and resurfacing, and/or new roadway projects.

The department will furnish the Consultant with any available as-built plans, microfilm plans, field notes, traffic data, accident statistics, agency coordination, existing right-of-way plans, aerial photos, boring logs, and other information.

This contract is anticipated to include approximately 3 to 15 different projects with estimated construction costs ranging from \$200,000 to \$4,000,000. The engineering services required may consist of only a portion of the total engineering work on a certain project.

The completion date for this contract will be 24 months after authorization to proceed. The agreement with the Consultant will have an option for renewal by the department for an additional 24 months.

Key personnel listed on **Exhibit A** for this project must include:

- The person who will assume duties of Project Manager for all aspects of the work (must be an Illinois Licensed Professional Engineer).

- The person who will perform the duties of Project Engineer, that individual in charge who is directly involved in the development of the reports and/or plans (must be an Illinois Licensed Professional Engineer).
- The person who will perform the work in the area of structure plan preparation documents (must be an Illinois Licensed Structural Engineer). In addition, the staff performing this work must be identified.
- The person who will perform/supervise the work in the area of drainage calculations and preparation of the hydraulic reports (must be an Illinois Professional Engineer).
- The person who will be in charge of land surveys (must be an Illinois Licensed Professional Surveyor).
- The person who will be charge of route surveys (must be an Illinois Licensed Professional engineer or an Illinois Professional Licensed Surveyor).
- The person who will perform the QC/QA review work of all milestone submittal documents (must be an Illinois Licensed Professional Engineer for roadway work and must be an Illinois Licensed Structural Engineer for structural work with adequate plan review experience).

Firms must be prequalified in the following categories to be considered for this project:

Location/Design Studies (Rehabilitation)
Highways (Roads & Streets)
Structures (Highway: Typical)
Hydraulic Reports (Waterways: Typical)

Statements of Interest, including resumes of the key people noted above, must be submitted electronically to the Central Bureau of Design and Environment at the following address: SOIPTB@dot.il.gov.

12. **Job No. P-92-121-01, FAP 303 (US BR 20) Land Surveys from 1000 feet West of Pierpont Ave. to Kilburn Ave., Winnebago County, Region 2/District Two.**

This project may utilize the **Direct Labor Multiple (DLM)** or the **Cost Plus Fixed Fee (CPFF)** method of contracting. The method of contracting will be determined at the initial meeting.

This project requires 12.00% DBE participation.

The **Complexity Factor** for this project is **0**.

The Consultant who is selected for this project and all subconsultants the prime Consultant will be using are scheduled to attend a negotiation meeting on **April 6, 2006 at 1:30 P.M.** at the Region 2/District Two Office in **Dixon**.

Phase I engineering services are required for the preparation of land acquisition documents and associated material for US BR 20 from approximately 1000 feet west of Pierpont Ave. to Kilburn Ave. All work for this project will be in English units.

The department will furnish the Consultant with alignment data, Title Reports, Existing Right-of-Way Plats, survey control points and proposed right-of-way requirements.

The estimated construction cost for this project is \$16,100,000. The Consultant's work is anticipated to include: Locate and Monument Section Corners and Block Corners, Proposed Right-of-Way Plats, Easement Plats, prepare Legal Descriptions, Stake proposed Right-of-Way, prepare Staking Plans and sign and seal Final Plats and Legal Descriptions. All data must be based on the coordinate system supplied by the department. The timeline will be critical for this project.

This work must be completed within 10 months after authorization to proceed.

Key personnel listed on **Exhibit A** for this project must include:

- The person who will assume the duties of Project Manager for all aspects of the work documents (must be an Illinois Licensed Professional Engineer).
- The person who will be in charge of land surveys (must be an Illinois Licensed Professional Surveyor).
- The person who will perform the QC/QA review work of all milestone submittal documents (must be an Illinois Licensed Professional Surveyor).

Firms must be prequalified in the following categories to be considered for this project:

Special Services (Land Surveys)

Statements of Interest, including resumes of the key people noted above, must be submitted electronically to the Central Bureau of Design and Environment at the following address: SOIPTB@dot.il.gov.

13. **Job No. P-94-024-06, Land and Route Surveys, Various Routes, Various Counties, Region Three/District Four**

This project may utilize the **Direct Labor Multiple** (DLM) or the **Cost Plus Fixed Fee** (CPFF) method of contracting. The method of contracting will be determined at the initial meeting.

This project requires 25% DBE participation.

The **Complexity Factor** for this project is **0**.

The Consultant who is selected for this project and all subconsultants the prime Consultant will be using are scheduled to attend a scoping meeting on **April 6, 2006** at **9:00 A.M.** at the Region Three/District Four Office in **Peoria**.

Phase I/II engineering services are expected to consist of various route and land surveying projects throughout District Four for various design and land acquisition projects. Work orders under the blanket agreement will be negotiated and authorized by the department on an as needed basis. All work may be in either English or metric units.

The department will provide any existing plans, R.O.W. documents or other pertinent data required for the completion of individual projects.

The Consultant may be required to contact local land surveyors for their input and may be expected to obtain historic survey reference data. This work must be completed within 24 months after authorization to proceed.

Key personnel listed on **Exhibit A** for this project must include:

- The person in charge of Route Surveys (must be an Illinois License Professional Engineer or an Illinois Professional Licensed Surveyor)
- The person who will be in charge of Land Surveys (must be an Illinois Licensed Land Surveyor).
- The person who will perform the QC/QA review work of all milestone submittal documents (must be an Illinois License Professional Engineer or an Illinois Professional Licensed Surveyor)

Firms must be prequalified in the following categories to be considered for this project:

Special Services (Land Surveys)
Special Services (Route Surveys)

Statements of Interest, including resumes of key people noted above, must be submitted electronically to the Central Bureau of Design and Environment at the following address: SOIPTB@dot.il.gov.

14. **Job No. P-95-007-05/D-95-017-05, Phase I/II Various Projects, Various Routes, Various Counties, Region Three/District Five.**

This project may utilize the **Direct Labor Multiple (DLM)** or the **Cost Plus Fixed Fee (CPFF)** method of contracting. The method of contracting will be determined at the initial meeting.

This project requires 25% DBE participation.

The **Complexity Factor** for this project is **0**.

The Consultant who is selected for this project and all subconsultants the prime Consultant will be using are scheduled to attend an initial meeting on **April 6, 2006 at 10:00 A.M.** at the Region Three/District Five Office in **Paris**.

Phase I and/or II engineering services are required for work on various projects in District Five. Work Orders under the blanket agreement will be negotiated and authorized by the Department on an as-needed basis. All work for this project may be in either English or metric units.

The Consultant's Phase I work, if required, may consist of conducting route surveys, subsurface utility engineering, hydraulic analysis, geometric studies, and preparing project reports (Categorical Exclusion reports only). This work may include data collection, development of alignment alternatives, cost estimates, traffic management analysis, accident analysis, quantity computations, and other related work items required to produce a project report.

The Consultant's Phase II work, if required, may consist of conducting route surveys, land surveys, right of way plat and plan preparation, writing legal descriptions, staking right of way, hydraulic analysis, geometric studies, roadway plans, TS&L drawings, pre-final structure plans, final structure plans and any other related work required to complete final plans, special provisions, and estimates as necessary.

The department will furnish the Consultant with traffic data, bridge condition reports, hydraulic reports, existing plans, utility coordination, survey data, Microstation files, Geopak files, boring logs, and accident data when available.

This contract may include approximately 4 to 10 different projects. The Consultant's work may consist of either complete projects or a portion of the total engineering required for a certain project. The estimated construction cost for each project may range from approximately \$10,000 to \$5,000,000. This contract must be completed within 36 months after authorization to proceed.

Key personnel listed on **Exhibit A** for this project must include:

- The person who will assume the duties of Project Manager for all aspects of the work documents (must be an Illinois Licensed Professional Engineer).
- The person who will perform the duties of Project Engineer, that individual in charge who is directly involved in the development of the contract documents (must be an Illinois Licensed Professional Engineer).

- The person who will perform the work in the area of structure plan preparation documents (must be an Illinois Licensed Structural Engineer). In addition, the staff performing this work must be identified.
- The person who will perform the QC/QA review work for all milestone submittal documents (must be an Illinois Licensed Professional Engineer for roadway work and must be an Illinois Licensed Structural Engineer for structural work with adequate plan review experience).

Firms must be prequalified in the following categories to be considered for this project:

Highways (Roads & Streets)
Structures (Highway: Typical)
Location/Design Studies (Rehabilitation)

Statements of Interest, including resumes of the key people noted above, must be submitted electronically to the Central Bureau of Design and Environment at the following address: SOIPTB@dot.il.gov.

15. **Job No. D-96-535-00, FAP 317 (US 24), Phase II Engineering for Structure Replacement over the Lamoine River, Brown and Schuyler County, Region Four/District Six.**

This project may utilize the **Direct Labor Multiple (DLM)** or the **Cost Plus Fixed Fee (CPFF)** method of contracting. The method of contracting will be determined at the initial meeting.

This project requires 15% DBE participation.

The **Complexity Factor** for this project is **0**.

The Consultant who is selected for this project and all subconsultants the prime Consultant will be using are scheduled to attend an initial scope of services meeting on **April 7, 2006 at 10:00 A.M.** at the Region Four/District Six Office in **Springfield**.

Phase II engineering services are required for the preparation of contract plans, special provisions and estimates for the removal and replacement of the US 24 structure over the Lamoine River located just north of Ripley in Brown and Schuyler County. All work for this project will be in English units.

The following structure is included in this project, SN 005-0001 over the Lamoine River

The Consultant's work is anticipated to consist of the preparation of contract plans, field surveys, preparation of right-of-way plats and plans, preparation of type, size and location (TS&L) drawings, structure plans, roadway plans, traffic control plan and any other related work to complete final plans, special provisions and estimates.

The department will furnish the Consultant with any available existing plans, survey and field notes, traffic data, boring logs, approved Bridge Condition Report, and approved Hydraulic Report, approved Phase I Design Report and other pertinent information to complete the assigned work.

The estimated construction cost for this project is \$4,000,000. This work must be completed within 20 months after authorization to proceed.

Key personnel listed on **Exhibit A** for this project must include:

- The person who will assume the duties of Project Manager for all aspects of the work documents (must be an Illinois Licensed Professional Engineer).
- The person who will perform the duties of Project Engineer, that individual in charge who is directly involved in the development of the contract documents (must be an Illinois Licensed Professional Engineer).
- The person who will perform the work in the area of structure plan preparation documents (must be an Illinois Licensed Structural Engineer). In addition, the staff performing this work must be identified.

- The person who will perform the QC/QA review work for all milestone submittal documents (must be an Illinois Licensed Professional Engineer for roadway work and must be an Illinois Licensed Structural Engineer for structural work with adequate plan review experience).

Firms must be prequalified in the following categories to be considered for this project:

Highways (Roads & Streets)
Structures (Highway: Typical)

Statements of Interest, including resumes of the key people noted above, must be submitted electronically to the Central Bureau of Design and Environment at the following address: SOIPTB@dot.il.gov.

16. **Job No. D-97-022-06, Phase I and/or II Projects, Various Routes, Various Counties, Region Four/District Seven.**

This project may utilize the **Direct Labor Multiple (DLM)** or the **Cost Plus Fixed Fee (CPFF)** method of contracting. The method of contracting will be determined at the initial meeting.

This project requires 10.00% DBE participation.

The **Complexity Factor** for this project is **0**.

The Consultant who is selected for this project and all subconsultants the prime Consultant will be using are scheduled to attend an initial meeting on **April 7, 2006 at 10:00 A. M.** at the Region Four/District Seven Office in **Effingham**.

Phase I and/or II engineering services are required for various projects in District Seven. Work orders under the blanket agreement will be negotiated and authorized by the department on an as-needed basis. All work for this project will be in English units.

Phase I work, if required, may consist of conducting route surveys, land surveys, hydraulic surveys, hydraulic analysis, geometric studies, environmental studies, preparing Project Reports, and preparing and/or reviewing geotechnical reports including soils, pavement and foundation recommendations. This work may include data collection, development of alignment alternatives, cost estimates, traffic management analysis, accident analysis, bridge condition reports, preparing and/or reviewing hydraulic reports, type, size and location drawings, and other related work and exhibits necessary to produce the Project Reports.

Phase II work, if required, may consist of conducting route surveys, land surveys, hydraulic analysis, geometric studies, preparation of type, size and location (TS&L) drawings, structure plans, roadway plans, and any other related work to complete final plans, specifications and estimates as necessary.

The department will furnish the Consultant with available as-built plans, microfilm, field notes, existing right-of-way plans, aerial photos, boring logs, existing Bridge Condition & Hydraulic Reports, and any other available information.

Projects may consist of simple patching and resurfacing, bridge repair, bridge rehabilitation, new bridge design, urban projects with storm sewer, widening and resurfacing and/or new roadway projects which may include preparation of plats & plans for right-of-way acquisition.

The estimated construction cost for each project may range from approximately \$500,000 to 2,000,000. The Consultant's work may include either complete projects or a portion of the total engineering work on a certain project. This work must be completed within 30 months after authorization to proceed.

Key personnel listed on **Exhibits A** for this project must include:

- The person who will assume the duties of Project Manager for all aspects of the work documents (must be an Illinois Licensed Professional Engineer).

- The person who will perform the duties of Project Engineer, that individual in charge who is directly involved in the development of the contract documents (must be an Illinois Licensed Professional Engineer).
- The person who will perform the work in the area of structure plan preparation documents (must be an Illinois Licensed Structural Engineer). In addition, the staff performing this work must be identified.
- The person who will perform the QC/QA review work of all milestone submittal documents (must be an Illinois Licensed Professional Engineer for roadway work and must be an Illinois Licensed Structural Engineer for structural work with adequate plan review experience).

Firms must be prequalified in the following categories to be considered for this project:

Highways (Roads & Streets)
Structures (Highway: Typical)
Location/Design Studies (Rehabilitation)

Statements of Interest, including resumes of the key people noted above, must be submitted electronically to the Central Bureau of Design and Environment at the following address:
SOIPTB@dot.il.gov.

17. **Job No. D-98-009-06, Utility Coordination, Various Routes, Various Counties, Region Five/District Eight.**

This project may utilize the **Direct Labor Multiple (DLM)** or the **Cost Plus Fixed Fee (CPFF)** method of contracting. The method of contracting will be determined at the initial meeting.

This project requires 15.00% DBE participation.

The **Complexity Factor** for this project is **0**.

The Consultant who is selected for this project and all subconsultants the prime Consultant will be using are scheduled to attend a scope of services meeting on **April 6, 2006, at 10:00 A.M.** at the Region Five/District Eight Office in **Collinsville**.

Phase II & III engineering services are required for utility coordination work for various routes in District 8. Work orders under a blanket agreement will be negotiated and authorized by the department on an as-needed basis. The Consultant shall respond within 24 hours to the District after receiving each work order assignment to discuss the scope of work, negotiate hours of work, equipment required, and direct cost. After the department gives the Consultant authorization to proceed, the Consultant shall commence work within 10 calendar days.

These services shall consist of coordination with the utility companies whose facilities are affected by the highway projects and may include, but not be limited to, the following tasks:

- Review IDOT's construction plans for areas of utility conflict where adjustments/relocations are needed.
- Provide a copy of IDOT's construction plans to the utility companies accompanied with an information letter and coordinate with utility companies to assist in plan preparation.
- Verify and record the horizontal location of each aerial and underground utility facility within the proposed construction limits. Also, verify and record the vertical location of each underground utility that require lowering or relocation due to the improvement.
- Review plans and estimates furnished by the utility company for the most economical method of relocating the utilities.
- Check plans and estimate of cost from the utility company and coordinate with the utility company for revisions if needed.
- Forward a copy of the reviewed and accepted plans and estimate of cost to the district a minimum of 5 months prior to the job letting.
- Provide to the District a completed "Status of Utilities to be Adjusted" sheet with the estimated dates of completion for each utility. This document is to be provided to the District a minimum of 14 days prior to the Plans, Special Provisions, & Estimates (PS & E) date for the letting for the improvement.
- Check plans, estimates and other data provided by the utility, required for preparing a reimbursable utility adjustment, if needed.

- If the utility adjustment is constructed on ROW, then a permit is required (IDOT writes the permit). The utility company is responsible for obtaining the permit from IDOT. The Consultant will be responsible for review of the proposed adjustment to insure the adjustment does not conflict with IDOT's proposed improvement.
- Monitor and inspect utility adjustments in the field to assure the adjustments are in accordance with the approved adjustment plan and when necessary, coordinate with the utility to identify and correct problems as they occur.
- Field check the adjustments and verify that they will not be in conflict with the proposed improvement.
- Schedule and coordinate the adjustments to be completed before the contractor is to start construction (10 days after the execution of the contract).
- Keep records of manpower, equipment, and materials used on reimbursable utility relocations.
- Review for accuracy all bills submitted by the utility companies for reimbursement. Work with the utilities to obtain a bill reflecting appropriate charges and submit the bill with your recommendations to IDOT for payment. IDOT will process the bills for payment.
- Attend field checks and preconstruction meetings for each section. Also, once the utility companies have received the plans and start submitting proposals, biweekly meetings may be required to discuss the job status.

The department will furnish the Consultant with any available final plans, as-built plans, microfilm plans, field notes, existing right-of-way plans, boring logs and any other available information.

The key personnel listed on **Exhibit A** for this project must include:

- The person's name who will assume the duties of Project Manager for all the aspects of work. This person must be an Illinois Licensed Professional Engineer.

Firms must be prequalified in the following categories to be considered for this project:

Special Services (Subsurface Utility Engineering)
AND/OR
Highways (Roads and Streets)
Special Services (Route Surveys)
Special Services (Land Surveys)

Statements of Interest must include satisfactory experience demonstrated in the activities required for this work by the firm and its employees.

Statements of Interest, including resumes of the key people noted above, must be submitted electronically to the Central Bureau of Design and Environment at the following address: SOIPTB@dot.il.gov.

18. **Job No. D-98-024-06, Phase I and/or II work for Various Projects, Various Routes, Various Counties, Region Five/District Eight.**

This project may utilize the **Direct Labor Multiple (DLM)** or the **Cost Plus Fixed Fee (CPFF)** method of contracting. The method of contracting will be determined at the initial meeting.

This project requires 15% DBE participation.

For **DLM** the **Complexity Factor** for this project is **0.003**.

For **CPFF** the **Complexity Factor** for this project is **0.035**.

The Consultant who is selected for this project and all subconsultants the prime Consultant will be using are scheduled to attend a negotiation meeting on **April 7, 2006 at 10:00 A.M.** at the Region Five/District Eight Office in **Collinsville**.

Phase I and/or II engineering services are required for various projects in District Eight. Work orders under the blanket agreement will be negotiated and authorized by the department on an as-needed basis. All work for this project will be in English units.

The Phase I work, if required, may consist of conducting route surveys, hydraulic surveys, hydraulic analyses, geometric studies, preparing TS&L plans, preparing Bridge Condition Reports and preparing Project Reports (Categorical Exclusion projects only). This work may include data collection, cost estimates, development of alignment alternatives, traffic management analysis, accident analysis, infrared testing of bridge decks, Bridge Condition Reports and other related work and exhibits necessary to produce a Project Report.

The Phase II work, if required, may consist of plan review, conducting route surveys, hydraulic analyses, geometric studies, roadway plans, assisting in Value Engineering studies, coordinating project wide staging and traffic management plans and any other related work to complete final plans, specifications and estimates, as necessary.

In addition, the Phase II work may include developing and maintaining a probabilistic, component, schedule-related Base + Risk method; utilizing the CEVP® (WSDOT's Cost Estimate Validation Process) format; for tracking and estimating project costs and schedule management. Cost Estimating software, @RISK 4.5 Professional by Palisade Corporation shall be utilized by the Consultant for risk-based cost estimating and project schedule management.

Projects may consist of bridge repair, bridge rehabilitation and replacement, resurfacing projects and possible interstate resurfacing.

The department will furnish the Consultant with any available as-built plans, microfilm plans, field notes, traffic data, accident statistics, agency coordination, existing right-of-way plans, aerial photos, boring logs and other information deemed applicable to the Consultant's work.

The Consultant's work may consist of either complete projects or a portion of the total engineering required for a certain project.

This work must be completed within 36 months after authorization to proceed.

Key personnel listed on **Exhibit A** for this project must include:

- The person who will assume the duties of Project Manager for all aspects of the work documents (must be an Illinois Licensed Professional Engineer).
- The person who will perform the duties of Project Engineer, that individual in charge who is directly involved in the development of the contract documents (must be an Illinois Licensed Professional Engineer).
- The person who will perform the work in the area of structure plan preparation documents (must be an Illinois Licensed Structural Engineer). In addition, the staff performing this work must be identified.
- The person who will perform/supervise the work in the area of drainage calculations and preparation of the Hydraulic Analyses (must be an Illinois Licensed Professional Engineer).
- The person who will perform the QC/QA review work for all milestone submittal documents (must be an Illinois Licensed Professional Engineer for roadway work and must be an Illinois Licensed Structural Engineer for structural work with adequate plan review experience).
- The person who will be in charge of land and route surveys (must be an Illinois Licensed Professional Land Surveyor)

Firms must be prequalified in the following categories to be considered for this project:

- **Highways (Roads & Streets)**
- **Structures (Highway: Typical)**
- **Location/Design Studies (Reconstruction/Major Rehabilitation)**
- **Special Services (Route Surveys)**
- **Special Services (Land Surveys)**

Statements of Interest, including resumes of the key people noted above, must be submitted electronically to the Central Bureau of Design and Environment at the following address: SOIPTB@dot.il.gov.

19. **Job No. D-99- 026-06, FAP 776 (IL 142), Phase II Structure Projects, Hamilton County , Region Five/District Nine**

This project may utilize the **Direct Labor Multiple (DLM)** or the **Cost Plus Fixed Fee (CPFF)** method of contracting. The method of contracting will be determined at the initial meeting.

This project requires 15 % DBE participation.

For **DLM** the **Complexity Factor** for this project is **0.008**.

For **CPFF** the **Complexity Factor** for this project is **0.07**.

The Consultant who is selected for this project and all subconsultants the prime Consultant will be using are scheduled to attend a negotiation meeting on **April 10, 2006 at 10:00 A.M.** at the Region Five/District Nine office in **Carbondale**.

Phase II engineering services are required for the preparation of preliminary and final roadway and structure plans, specifications and estimates for the replacement/rehabilitation of an anticipated three highway/stream structures. All work for this project will be in English units.

The following structures are anticipated to be included in this project:

- S.N. 033-0020, IL 142 over Contrary Creek
- S.N. 033-0021, IL 142 over stream
- S.N. 033-0022, IL 142 over stream

The department will provide the Consultant with alignment data, vertical data, existing structure plans, Bridge Condition Reports, Hydraulic Reports, TS&L's and Project Reports.

The estimated construction cost for this project is \$2,971,000. The completion date for this contract will be 18 months after authorization to proceed.

Key personnel listed on **Exhibit A** for this project must include:

- The person who will assume the duties of Project Manager for all aspects of the work documents (must be an Illinois Licensed Professional Engineer).
- The person who will assume the duties of Project Engineer, that individual in charge who is directly involved in the development of contract documents (must be an Illinois Licensed Professional Engineer).
- The person who will perform the work in the area of structure plan preparation documents (must be an Illinois Licensed Structural Engineer). In addition, the staff performing this work must be identified.
- The person who will perform the QC/QA review work of all milestone submittal documents (must be an Illinois Licensed Professional Engineer for roadway work and must be an Illinois Licensed Structural Engineer for structural work with adequate plan review experience).

Firms must be prequalified in the following categories to be considered for this project:

**Structures (Highway: Advanced Typical)
Highways (Roads and Streets)**

Statements of Interest, including resumes of the key people noted above, must be submitted electronically to the Central Bureau of Design and Environment at the following address:
SOIPTB@dot.il.gov.

20. **Job No. D-99- 027-06, FAP 332 (IL 1) and FAP 328 (US 45), Wabash and Wayne Counties, Region Five/District Nine**

This project may utilize the **Direct Labor Multiple (DLM)** or the **Cost Plus Fixed Fee (CPFF)** method of contracting. The method of contracting will be determined at the initial meeting.

This project requires 15 % DBE participation.

For **DLM** the **Complexity Factor** for this project is **0.008**.

For **CPFF** the **Complexity Factor** for this project is **0.07**.

The Consultant who is selected for this project and all subconsultants the prime Consultant will be using are scheduled to attend a negotiation meeting on **April 11, 2006 at 10:00 A.M.** at the Region Five/District Nine office in **Carbondale**.

Phase II engineering services are required for the preparation preliminary and final roadway and structure plans, specifications and estimates for the replacement/rehabilitation of an anticipated four highway/stream structures. All work for this project will be in English units.

The following structures are included in this project:

- S.N. 093-0005, IL 1 over Bonpas Creek
- S.N. 096-0019, US 45 over Raccoon Creek
- S.N. 096-0020, US 45 over Endsley Creek
- S.N. 096-0022, US 45 over stream

The department will provide the Consultant with alignment data, vertical data, existing structure plans, Bridge Condition Reports, Hydraulic Reports, Type, Size and Location drawings (TSL), and Project Reports.

The estimated construction cost for this project is \$1,725,000. The completion date for this contract will be 18 months after authorization to proceed.

Key personnel listed on **Exhibit A** for this project must include:

- The person who will assume the duties of Project Manager for all aspects of the work documents (must be an Illinois Licensed Professional Engineer).
- The person who will assume the duties of Project Engineer, that individual in charge who is directly involved in the development of contract documents (must be an Illinois Licensed Professional Engineer).
- The person who will perform the work in the area of structure plan preparation documents (must be an Illinois Licensed Structural Engineer). In addition, the staff performing this work must be identified.
- The person who will perform the QC/QA review work of all milestone submittal documents (must be an Illinois Licensed Professional Engineer for roadway work and must be an Illinois Licensed Structural Engineer for structural work with adequate plan review experience).

Firms must be prequalified in the following categories to be considered for this project:

**Structures (Highway: Advanced Typical)
Highways (Roads and Streets)**

Statements of Interest, including resumes of the key people noted above, must be submitted electronically to the Central Bureau of Design and Environment at the following address:
SOIPTB@dot.il.gov.

21. **Job No. P-30-005-06: Project Manager Phase I/II Work for Various CREATE Projects, Various Counties, Region One/District One (Central Bureau of Railroads).**

This project may utilize the **Direct Labor Multiple (DLM)** or the **Cost Plus Fixed Fee (CPFF)** method of contracting. The method of contracting will be determined at the initial meeting.

The **Complexity Factor** for this project is **0**.

The Consultant who is selected for this project and all subconsultants the prime Consultant will be using are scheduled to attend a negotiation meeting on **April 7, 2006** at **10:00 A.M** at the Bureau of Railroads, in **Springfield**.

Phase I and/or Phase II engineering services are required for a CREATE engineering project manager. The Consultant Project manager (PM) will manage various IDOT CREATE Phase I and/or Phase II projects which are under contract with other Consultant engineering firms. Work orders under the blanket agreement will be negotiated and authorized on an as-needed basis. All work for this project may be in either English or metric units.

Firms previously contracted perform consultant services under the CREATE program shall not be eligible to manage those projects for which they or their subconsultants were hired. Consulting engineering firms managing a Phase I Consultant may not be managed by that same Phase I Consultant if performing the Phase II work.

Joint Ventures will not be allowed on this project.

The PM will be expected to perform work similar to an IDOT Project Engineer & staff. This work may include engineering, technical, management, land acquisition, environmental, and administrative services to assist in bringing to completion as expeditiously as possible numerous projects.

The work anticipated for Phase I and/or Phase II projects may include, but not be limited to:

- Manage engineering Consultant projects assigned, including reviews and contract administration;
- Manage and track project-level cost, schedule and budget requirements, and coordination with IDOT program-level and assigned project-level controls personnel;
- Validate, and monitor project scope;
- Identify and implement all necessary coordination and communication within and outside the department; to IDOT and other CREATE stakeholders as required;
- Hold regular progress meetings and briefings for IDOT including FHWA where details of project and progress are presented;
- Facilitate and expedite the resolution of technical issues, drawing upon necessary resources and experts in applicable disciplines;
- Facilitate the resolution of contractual issues, drawing upon necessary resources within IDOT;
- All other work as required to manage phase I projects.

The department will make available all IDOT procedures, standards and specifications, and any other available documents.

The completion date for this contract will be 18 months after authorization to proceed.

Key personnel listed on **Exhibits A and B** for this project must include:

- The person who will assume the duties of Project Manager for all aspects of the work documents (must be an Illinois Licensed Professional Engineer).
- The person who will assume the duties of Project Engineer, that individual-in-charge (must be an Illinois Licensed Professional Engineer).
- The person(s) who will perform the QC/QA review work of all milestone submittals (must be an Illinois Licensed Professional Engineer).
- The Environmental Lead, who will be responsible for the day-to-day management of the environmental work effort, and persons responsible for all environmental disciplines including water quality, traffic noise, socio-economics and ecology. Environmental staffing on **Exhibit B** must match the staffing presented in the firm's most recent Statement of Experience and Financial Condition.

Statements of Interest must also provide the approach the firm would take on this project, managing experience, etc.

Firms must be prequalified in the following categories to be considered for this project:

Location and Design Studies (New Construction/Major Reconstruction)
Special Transportation Studies (Railway Engineering)
Environmental Reports (Environmental Impact Statements)

Statements of Interest, including resumes of the key people noted above, must be submitted electronically to the Central Bureau of Design and Environment at the following address:

SOIPTB@dot.il.gov.

22. **Job No. P-30-002-05 Statewide Waste Assessment Investigations, Bureau of Design and Environment.**

This project will utilize the **Cost Plus Fixed Fee** method of contracting.

The **Complexity Factor** for this project is **0.035**.

The Consultant who is selected for this project and all subconsultants the prime Consultant will be using are scheduled to attend a negotiation meeting on **April 12, 2006 at 1:30 P.M.** at the Harry R. Hanley Building, Bureau of Design and Environment (BDE) in **Springfield**.

The department has contracted with the Illinois State Geological Survey (ISGS) to conduct preliminary environmental site assessments (PESA's) of property proposed for highway use. ISGS conducts land-use history investigations; researches federal, state, and local records; conducts field surveys and selected field tests for volatile organic compounds, metals, pesticides, and PCBs (polychlorinated biphenyls); and attempts to determine if the potential for contamination is nonexistent, low, medium or high.

Based on PESA results, districts work with the Environment Section of the Bureau of Design and Environment (BDE) to decide whether additional analyses or other remediation actions are necessary. Work orders under the blanket agreement will be negotiated and authorized by the department on an as needed basis.

The department will furnish the PESA and, as available, Project Reports, field survey data, soil survey data, and plans of the existing and proposed transportation facility.

Engineering services are required to perform "Preliminary Site Investigations" (PSI's), and when necessary Detailed Site Investigations (DSI's) which are identical to CERCLA RI/FS's. PSI's will entail investigations of sites potentially containing regulated substances. A variety of sites may be investigated (i.e., old, abandoned, or improperly closed landfills, chemical manufacturing sites, metal plating/fabricating sites, dry cleaning/service stations, storage tank sites and buildings and structures, containing potential contamination).

Also, provisions for laboratory and field testing including geophysical surveys when needed will be required for a wide variety of regulated substances including but not limited to: soil and water quality parameters including contaminants i.e., PCB's, pesticides, heavy metals, organics and radioactive wastes.

Additional work will include conducting surveys and testing, if applicable, of stored materials, tank contents, and containers to determine whether regulated substances are present. Evaluation, summarization, and reporting on PSI's, DSI's, laboratory analysis and survey work are included as an important part of this work.

ANTICIPATED PROPOSED SCOPE OF WORK SUMMARIES FOR THE VARIOUS TYPES OF INVESTIGATIONS REQUIRED:

POTENTIAL WASTE SITES AND UST-LUST SITES

Engineering services are required to perform PSI's and on occasion, DSI's (RI/FS's), remedial design, which may include underground storage tank (UST) removal, and construction oversight of sites suspected to contain regulated substances, UST-LUST's and/or unsecured materials of

concern. The PSI's are to include verification of subsurface geologic and hydrologic conditions, identification of chemical contamination and identification of the extent of chemical contamination, when feasible.

Preliminary site investigations include items of work such as work plans, health and safety plans, surface geophysical investigations, trenching, drilling, sampling, chemical analysis, and reporting. Laboratory testing, including quality assurance/quality control is considered to be the responsibility of the Consultant.

MISCELLANEOUS SURVEYS AND TESTING

Engineering services to perform environmental surveys and/or testing on an as-needed basis will include assignments such as conducting surveys and testing of stored materials, tank contents, containers, and environmental media (e.g., surface water, soil, air, and groundwater). The work may also include assignments such as reviewing and evaluating existing property-specific information, providing technical expertise on an as-needed basis, and other ad hoc environmental-related tasks within the scope of services normally provided by a hazardous waste Consultant.

EMERGENCY RESPONSE OVERSIGHT

Engineering services are required to perform emergency response oversight. Oversight shall include but not be limited to review of health and safety plans, drilling, sampling, chemical analysis, waste classification, reporting, and coordinating the release with the proper authorities (IEPA, IEMA, U.S. EPA, Corps of Engineers, or other State or Federal Agencies). Laboratory testing, including quality assurance/quality control is considered to be the responsibility of the Consultant. The Consultant should be prepared to perform any task to minimize the release and cleanup. The goal of these work assignments is to obtain closure for the release from the proper State and Federal Agencies.

ENVIRONMENTAL PLANS FOR OPERATIONS FACILITIES

Engineering services maybe required to review current operational facilities on current practices that impact the environment, investigate past practices, and make recommendations for mitigation and improvements. Assist with the development of an environmental management system which will provide a framework for practices, procedures, and processes to manage the Bureau of Operations' Environmental Program.

EXTRANET

To help the department facilitate the review of work plans and PSI reports and project tracking, the Consultant will be required to help ISGS maintain an established extranet site hosted by ISGS. The extranet site contains information on each work plan tasked and includes draft and final work plans, draft and final PSI reports, budget information (contract and individual work plans), analytical results, site location maps, site photographs, contacts, related links, and project progress.

As a task is identified, the department will request the Consultant to prepare an outline of the work phases and technical approach, personnel requirements, detailed cost breakdown, and a schedule that is consistent with the task request.

When a task order is awarded for investigation, the Consultant will be fully responsible for the sampling, testing and reporting.

For performance of this work, the Consultant will be required to assign the necessary full-time staff described in its Statement of Interest and in many cases (except emergency response oversight), to respond with a draft work plan within 15 working days, conduct field work within 10 working days after authority to proceed, draft report within 3 months after the authority to proceed, and final report two (2) weeks following IDOT comments. For emergency response oversight, the Consultant will be required to respond in four hours.

The completion time for this work (excluding emergency response oversight) will be 12 months after authorization to proceed and the agreement with the Consultant will have an option to renew by the department for an additional 12 months.

Key personnel listed on **Exhibit A** for this project must include:

- The location of the office from which the majority of work on this project will be performed.
- An organization chart showing the Administrative/Managerial Staff of the office and a flow chart of key Technical/Professional Staff, including field and risk assessment staff that will be assigned to this project. Similarly, information of subconsultants' location/organization should be provided.
- The name of the laboratory that will be used for this project. (The selected firm must have the capability of using either in-house or subcontracted laboratory facilities which are qualified to work on IEPA sites. The laboratory shall have an approved IEPA quality assurance plan and follow that plan in performing the analyses.)
- A statement of your firm's ability to do the work in-house, or if necessary, what work is to be subcontracted. Indicate item(s) of work which would be subcontracted and the proposed subcontractors).
- A description of your mobilization plan to be used upon notification that a work order has been authorized.
- A discussion of your organizational and management practices to maintain established schedules, avoid cost overruns, and inform IDOT of the status of work orders.

For additional information concerning the project, please contact Steve Gobelman at (217) 785-4246.

Firms must be prequalified in **Special Services (Hazardous Waste)** category and be familiar with IDOT contracts to be considered for this project. In addition, they must comply with the following:

- Use laboratory facilities that are accredited by the IEPA under 35 Illinois Administrative Code 186.
- Use appropriately licensed and certified equipment and appropriately licensed and registered subconsultants.

Statements of Interest, including resumes of the key people noted above, must be submitted electronically to the Central Bureau of Design and Environment at the following address:
SOIPTB@dot.il.gov.

23. **Job No. P-30-006-06, Photogrammetry Contract for the Southern Area of Illinois, Bureau of Design and Environment.**

This project will utilize the **Cost Plus Fixed Fee** method of contracting.

The **Complexity Factor** for this project is **0**.

The Consultant who is selected for this project and all subconsultants the prime Consultant will be using are scheduled to attend a negotiation meeting on **April 7, 2006 at 10:00 A.M.** at the Harry R. Hanley Building, Bureau of Design and Environment, in **Springfield**.

The main emphasis of the services required is obtaining aerial photography for the southern area of Illinois. Other photogrammetry services may be required on an as needed basis. Work orders under the blanket agreement will be negotiated and authorized by the department on an as needed basis.

The Consultant's work includes, but is not limited to, providing the following services:

- Photography Acquisition – The Consultant will be required to acquire vertical aerial photography of projects selected by the department. The aerial photography shall be obtained according to the Specifications titled "Illinois Department of Transportation Specifications for Vertical Aerial Photography" revised November 1, 1994. The department requires a copy of the latest Calibration Report from the U.S. Geological Survey for each Consultant's camera used on department projects.

Other photogrammetric services which may be requested:

- Topographic Mapping – The Consultant may be requested to prepare topographic mapping using CADD technology, including analytical triangulation. The mapping shall be prepared as per the latest version of the department's manual titled "CADD Roadway Drafting Reference Guide".
- Orthophoto Production – The Consultant may be requested to produce digital images, digital mosaics and orthophotos.

The completion date for this contract will be 30 months after authorization to proceed

Firms must be prequalified in the **Special Services (Aerial Mapping)** category to be considered for this project.

Statements of Interest must be submitted electronically to the Central Bureau of Design and Environment at the following address: SOIPTB@dot.il.gov.

NOTICE ALLOWABLE DIRECT COSTS

The allowable direct costs will be effective February 1, 2005.

The following costs are allowable when requested by the Department and included in the contract. The costs are allowable when it is customary for the firm to bill for the cost and it can be itemized in the firm's billing and accounting systems.

Per Diem	Conus Rate (Maximum)
Lodging	Conus Rate (Maximum)
Air Fare	Coach rate with 2 weeks notice as approved
Vehicles	
Mileage	federal travel rate* maximum
Daily Rate (owned or leased the same)	\$36 /day- District 1 \$32/day- downstate
Overtime	Premium portion
Tolls	Actual Cost
Film and Film Processing**	Actual Cost
Overnight Delivery/Postage Courier Service	Actual Cost
Copies of Deliverables and Mylars	Actual Cost
Specific insurance – required for project	Actual Cost
CADD	Actual Costs (Maximum of \$15.00/Hr)
Monuments – Permanent	Actual Cost
Payment for Newspaper Ads	Actual Cost
Web Site	Actual Cost
Facility Rental for Public Meetings & Exhibits/Renderings & AV equipment/transcriptions	Actual Cost
Recording fees	Actual Cost
Courthouse fees	Actual Cost
Testing of Soil Samples	Actual Cost
Lab Services (excluding Phase III normal construction inspection such as beam breaks, cylinder breaks, pavement cores)	Actual Cost
Equipment rental specific for a project (snooper for bridge inspection, noise meter, etc.)	Actual Cost
Specialized equipment – on an as needed basis with prior approval	Actual Cost
Traffic Systems	Actual Cost
Mobile Phone (for traffic system implementation)	
Telephone Usage (for traffic system monitoring)	
Storm sewer cleaning and televising	Actual Cost
Traffic control and protection	Actual Cost
Aerial photography and mapping	Actual Cost
Utility exploratory trenching	Actual Cost

NOTICE

ALLOWABLE DIRECT COSTS

- * website for Conus and federal rates
http://www.gsa.gov/Portal/gsa/ep/contentView.do?queryYear=2005&contentType=GSA_BASIC&contentId=17943&queryState=Illinois&noc=T
- ** Use of digital cameras verses film cameras is encouraged when firms own digital cameras and the discussion of their use will be part of the negotiations. Film & copies will be reimbursed at actual costs.
- On all agreements authorized after January 1 2005, GPS Equipment is considered tools of the trade.

PHASE III

Phase III Communications:

Cell Phones (maximum of 3 without additional approval. Personal phones that do not remain on the job site are not allowable) \$70/month/phone (Maximum)

radio communication
2-way radio

Actual Cost
Actual Cost

Vehicles (Only for Vehicles assigned to project)
DAILY RATE ONLY

\$36 /day- District 1
\$32/day- downstate

The number of days will be calculated as follows:

For extended stay **- Number of days on job site plus one day to travel to and from job site

Weekly (hotel) –Number of days on job site plus one day to travel to and from job site per week.

Actual cost based on
firm policy

Shift Differential

* **Extended Stay Status applies to individuals on the project over 20 consecutive working days . The decision whether individuals will stay over the week-end will be made after the Contractor's schedule is available and shall be made jointly by the Consultant Liaison and the IDOT Resident.

NOTES:

For Construction inspection contracts beam and cylinder breaks are not reimbursable.

Overtime to employees traveling to and from the site will be allowable depending on the firms policy and limited to the Department's policy (see Departmental Order 4-1).

CHANGE IN DIRECT LABOR MULTIPLIER

Effective for the DIRECT LABOR MULTIPLIER METHOD OF COMPENSATION:

FOR PROJECTS SELECTED AFTER MARCH 1, 2004 THE DIRECT LABOR MULTIPLIER USED FOR THE PRIME AND SUPPLEMENTAL AGREEMENTS ASSOCIATED WITH THESE PROJECTS WILL BE **2.80** IN THE COMPENSATION EQUATION:

$DLM = [(2.80 + R) \times \text{direct labor}] + \text{directs costs}$

R = complexity factor given in the advertisement.

IF THE PROJECT WAS SELECTED PRIOR TO MARCH 1, 2004 THE DIRECT LABOR MULTIPLIER FOR ALL PRIME AND SUPPLEMENTAL AGREEMENTS ASSOCIATED WITH THE PROJECT IS AS FOLLOWS:

Phase I and II Primes and supplements for projects selected prior to PTB 127 = 3.0

(Except Phase II of Phase I/Phase II projects authorized after May 21, 2003)

Phase III primes for projects selected prior to PTB 127-2.80

All Primes and supplements for projects selected after March 1, 2004 or later and Phase II of Phase I/Phase II projects authorized after March 1, 2004 - 2.80.

**Notice
Concerning
Exhibits A and B
Current Obligations
Disclosure Forms A and B**

Please review the documents listed above and use the latest version when submitting a Statement of Interest for the Professional Transportation Bulletin.

The Exhibits, Current Obligations and Disclosure Forms are available as Word documents and may be downloaded from our web-site:

<http://www.dot.il.gov/desenv/deform.html>

The bookmarks, listed in the bulletin, for the Exhibits, Current Obligations and Disclosure forms are also linked to the web-site.

The Word documents are labeled as follows:

Exhibits = **EXHAB**

Current Obligation Form = **CURRENT OBLIGATIONS**

Disclosure Forms = **DISC2**

NOTICE

Construction Guides and Manuals – Memorandums

The Department's Construction Guides, Manuals and Memorandum are available on our web-site at the following address: <http://www.dot.il.gov/dobuisns.html>.

The Manual Sales Order Form is also available at the following address: <http://www.dot.il.gov/desenv/orderform.html>

“Special Notice Regarding Disadvantaged Business Enterprises”

The Illinois Department of Transportation (IDOT) has designated various projects advertised in the Professional Transportation Bulletin as requiring participation by Disadvantaged Business Enterprises (DBEs). As a condition for any firm to be considered for a project requiring DBE participation, it must subcontract a minimum of the designated percent to a DBE. Each firm's letter must include a statement that it intends to subcontract the designated percent to a DBE.

To be considered as a prime consultant or subconsultant, a DBE must be prequalified with IDOT's Division of Highways' Bureau of Design and Environment (BDE). IDOT's Bureau of Small Business Enterprises (SBE) maintains a Disadvantaged Business Enterprises Directory of certified DBEs for the purpose of providing a reference source to assist firms. You can view/print and download the most current listing of DBE firms at IDOT's web site <http://www.dot.il.gov> under "Doing Business" "Small Business Enterprises" "Disadvantaged Business Enterprises (DBE) Program/IL UCP DBE Directory." DBE firms who are prequalified by BDE and are interested in performing consultant work are listed under the UCP Directory by Category, Architecture/Engineering Sorted by firm. Any firm desiring to subcontract work to firms that are not certified DBEs should encourage them to become certified by contacting SBE's Certification Section at (217) 782-5490.

Failure to assign at least the designated percent to one or more DBEs or to demonstrate that a good faith effort was made to assign the designated percent shall result in one of the following:

1. Notification to the prime consultant that the Agreement will not be signed until the percentage of DBE participation is met.
2. The Agreement will be signed with the understanding that payments to the prime consultant will be reduced by an amount determined by multiplying the total Agreement fee by the designated percent and subtracting the dollar value of DBE subcontracts.
3. Contract negotiations will be terminated.

Upon completion of the contract, should it be determined the prime consultant failed to assign the designated percent to an eligible DBE or demonstrated that a good faith effort was made to assign the designated percent as agreed upon, payment to the prime consultant will be reduced by the amount set forth in number 2 above.

A complaint regarding any decision rendered by or action by any Division or Office of IDOT pursuant to these requirements may be filed with the Secretary of IDOT.

NOTICE FOR DOCUMENTATION OF CONTRACT QUANTITIES

Information regarding the Documentation of Contract Quantities can now be found on our web site (www.dot.il.gov) under Public Partners. The registration form, registration process and class format is available.

If you have questions regarding this class or the content on the web page, please email cbctraining@dot.il.gov.

NOTICE OF ELECTRONIC SIGNATURES

In order for us to verify your scanned in signature (on cover letters, Exhibit A and Disclosure Forms A and B) we request that you complete the Signature Certification for Electronic Submittals form and submit it to us in **hard-copy** immediately. A signature certification form must be completed for each individual that will be signing any of the above mentioned documents. **If you have previously submitted your Signature Certification and no new individual will be signing the documents you are not required to re-submit the document.**

Send Submittal to:
Illinois Department of Transportation
Ms. Cheryl Cathey
Bureau of Design and Environment
Attn: Consultant Unit (Room 330)
2300 South Dirksen Parkway
Springfield, IL 62764

If you have questions, please contact me at or Carrie Kowalski at
KOWALSKICL@dot.il.gov

[Signature Certification for Electronic Submittal](#)

Notice
Of Requirement For
Illinois Department Of Human Rights (IDHR)
Public Contract Number

Following selection, contract all proposal packages submitted to the Illinois Department of Transportation (IDOT) must contain the firm's IDHR number and the expiration date. The Department is required by law to require this number from all parties contracting with the State of Illinois. If your firm currently does not have an IDHR number the application form may be obtained from the following web-site www.state.il.us/dhr/ or may also be obtained by contacting:

DHR, Public Contracts Section
Public Contracts Division
100 W. Randolph,
Suite 10-100
Chicago, IL 60601

or by calling: 312-814-2432 (TDD 312-263-1579)

NOTE: An IDHR public contract number is not required if the firm employs fewer than 15 employees.

NOTICE FOR JOINT VENTURE

Statements submitted by Joint Ventures will be considered. The Joint Venture, Agreement signed by all parties, must be included with the statement of interest. The Joint Venture entity will have the sum of the individual firm's prequalification, capacity and evaluation history.

The required insurance coverage applies to the Joint Venture entity.

The Joint Venture entity will submit one statement of interest with the following specified:

- the party who will be the managing firm
- the firm responsible for each prequalification category
- each individual firm's work left and disclosure forms.
- the firm responsible for invoicing
- One Exhibit A plus other required documents specified in the PTB combining the information for all firms. (Indicate personnel name and firm name on exhibit A for key staff)

EXHIBIT A EXAMPLE:

Name Required Prequalification Category :

<u>Location Drainage</u>	
*Name	<u>Mr. John Smith (ABC Engineering Assoc.)</u>
Category	<u>PE</u> (PE, SE, LS)
Registration #	<u>62012345</u>
Year Registered	<u>1995</u> State <u>IL</u>
Office Location:	
City	<u>Chicago</u> State <u>IL</u>

A firm planning to submit a Statements of Interest as a joint venture should contact the department for a new Statements of Interest Code. E-mail Carrie Kowalski at kowalski@dot.il.gov.

NOTICE

Beginning with PTB 135 and all subsequent bulletins, the maximum hourly rate for **project managers and principals** will be \$70/hour. This rate may be used on all supplemental agreements received in the central bureau of Design and Environment on or after May 1, 2005 upon concurrence by the IDOT project manager.

Notice of Availability of the English Survey Manager Database

An updated English Survey Manager Database (idote.smd) is available on the IDOT web site. The location of this file is on the CADD Support Home Page under Geopak Files>Database Files.

Highlight of changes:

A new category, Default Survey Codes, has been added to the hierarchical database structure. This category contains a 900 series of "default" point codes.

The additions are as follows:

900-909	Default 2d point Level 1, Color 1 (blue), TH=7.5 TW=7.5 DTM Control – Not included
910-919	Default 3d point Level 1, Color 1 (blue), TH=7.5 TW=7.5 DTM Control – Not included
920-929	Default 2d string Level 1, Color 1 (blue), TH=7.5 TW=7.5 Linear Feature – Level 1, Color 1 (blue) DTM Control – Not included
930-939	Default 3d string Level 1, Color 1 (blue), TH=7.5 TW=7.5 Linear Feature – Level 1, Color 1 (blue) DTM Control – Include as Spot and Break

These additions have default symbologies with field comments enabled which will allow surveyors the ability to add miscellaneous point codes to the database. These point codes can then be manipulated while in the point edit or chain edit modes of Geopak.

An updated informational database in HTML format will also be available on the CADD Support Home Page under "Survey Point Code Descriptions". This is available in English and Metric formats. Also included in this group is a Readme file, which details the use for this information.

NOTICE
For
Prequalification of Consultants & DBE Revisions

Prequalification:

As stated in each Professional Transportation Bulletin under the guidelines:

Consultant firms acting as prime must be prequalified in all of the advertised areas listed in the project advertisement even if they plan to subcontract part of the project, except where noted in a specific project advertisement. If the prime is not prequalified in the required category(s) stated in the project advertisement, that firm's Statements of Interest cannot be considered for the item.

Within the Statements of Interest (Exhibit A page 3 of 3) the prime must identify any subconsultants and the item(s) of work they will perform. Subconsultants must be prequalified in the category of work they will be performing.

Also as stated in the Standard Agreement Provisions: 2.24 SUBLETTING, ASSIGNMENT OR TRANSFER:

Subconsultants must be prequalified in accordance with the department requirements. For specialized services that are required but which do not fall into the areas of prequalification of the department, a non-prequalified firm may be used with department approval.

DBE Participation:

The U.S. DOT regulation, 49CFR Sec. 26.55(a), states, "When a DBE participates in a contract, you count only the value of the work actually performed by the DBE toward the DBE goals." The IDOT and U.S. DOT regulations further state:

When a DBE subcontracts part of the work its contract to another firm, the value of the subcontracted work may be counted toward DBE goals only if the DBE's subcontractor is itself a DBE. Work that a DBE subcontracts to a non-DBE firm does not count toward DBE goals.

Effective immediately all subconsultant proposals where a DBE is utilized for the main contract and it is necessary for them to obtain non professional services which would be listed as a direct cost, the amount of those services will not apply to the DBE goal. For example if a DBE geotechnical firm is being used and they use a non-DBE drilling company to do the borings, the cost for this work will not apply to the DBE goal.

However any direct costs incidental to doing the work, per diem, hotel costs etc. will still counted toward the goal.

NOTICE

QUALITY ASSURANCE PREQUALIFICATION CATEGORY

This notice is important for consultants who are, or wish to be, prequalified in the Quality Assurance (QA) prequalification category. The requirement for accreditation of QA Testing laboratories has been phased in over the last two years.

QA Testing labs must be fully accredited to be considered for any new contracts or to renew prequalification.

Note: Neither prequalification nor accreditation is required for consultants working directly for contractors, performing Quality Control (QC) activities.

Synopsis of requirements:

- The laboratory must be accredited under the AASHTO Accreditation Program (AAP). The AAP requires on-site inspections and participation in proficiency sample programs. The Portland cement concrete (PCC) inspections and proficiency programs are conducted by the Cement and Concrete Reference Laboratory (CCRL). The hot-mix asphalt (HMA) programs are conducted by the AASHTO Materials Reference Laboratory (AMRL). Either CCRL or AMRL can conduct the aggregate program for your lab. Both AMRL and CCRL are scheduled to be in Illinois this year.
- The laboratory shall be accredited in all of the test procedures specified in Bureau of Materials and Physical Research (BMPR) Policy Memorandum "Minimum Private Laboratory Requirements for Construction Materials Testing or Mix Design." The current policy (2001-01) can be found in the Manual of Test Procedures for Materials. An update is scheduled to be published soon and may be viewed or downloaded from the Department's Web site.
- Personnel performing materials testing for aggregate, PCC, and HMA shall have completed the appropriate QC/QA trained technician classes. Personnel performing soils field tests shall have completed IDOT class S-33, "Standard Earth Density."

The description of the prequalification categories, the SEFC, and the BMPR Policy Memo may be viewed or downloaded from the IDOT Internet Site: [http:// www.dot.il.gov](http://www.dot.il.gov)

Information about the AAP accreditation and AMRL programs may be found on the AMRL Web Site: <http://patapsco.nist.gov/amrl/home/index.asp>

Information about the CCRL inspection and proficiency sample programs may be found on the CCRL Web Site: <http://www.bfrl.nist.gov/862/ccrl/front.htm>

Questions may be addressed to your District Materials Engineer or the Central Bureau of Materials and Physical Research.

NOTICE
Construction and Quality Assurance Consultants
S 33- Geotechnical Field Testing and Inspection Class

Professional Transportation Bulletin 117 included a notice that S 33 is a required class for technicians performing soil tests on construction projects. This includes consultant personnel providing Construction Inspection or Quality Assurance Testing on Department projects. The Department will schedule sessions of this class after determining the demand. Below is a description of the class and sign-up information.

Course Objectives

The student will be able to do the following: 1. Determine the Standard Dry Density and Optimum Moisture content of soil or soil mix according to AASHTO T 99. 2. Determine in-place density in accordance with approved test procedures. 3. Select the correct soil curve by the use of a one-point proctor and/or textural classification of the soils. 4. Determine the moisture content of a soil by either laboratory or field methods. 5. Perform validity checks of the soils test results. 6. Report test results in accordance with departmental requirements.

Prerequisites

1. One year of college level technical training or six months experience, or consent of the course instructor;
2. High school math, including ability to calculate percentages.

Course Length

Two Days, including written examination.

Cost

There is no cost to consultants.

Location

District One, District Eight, and other locations determined by demand.

Schedule

As determined by demand; late fall, winter, and early spring.

To Register

Mail or Fax a note or e-mail Brad Risinger in the Technical Training Unit. For each proposed registrant, provide name, firm name, address, phone, FAX and e-mail. Please list multiple registrants in priority order, since seating in initial classes may be limited.

Brad Risinger
IDOT- Technical Training Unit
313 Hanley Building
2300 S. Dirksen Parkway
Springfield, IL 62764
217 782-0128
FAX 217 524-7260

RisingerBD@dot.il.gov

TECHNICAL TRAINING ANNOUNCEMENT IDOT AND PROFESSIONAL ENGINEERING ORGANIZATION'S PARTNERSHIP

The Illinois Department of Transportation will be continuing the technical training partnership with the professional engineering organizations during this training year from October 1, 2005 to June 30, 2006. The Department's Program Development Technical Training classes will once again be the main training program used in the partnership. The PD training program covers all areas of Phase I & II and has been training IDOT employees since 1995. The PD Training Program consists of 18 technical classes taught by IDOT personnel and 4 highly specialized classes presented by the University of Illinois and Northwestern University

The professional engineering organizations will be able to select classes based on their membership request to partner with the Department from the PD Training Schedule for Fiscal Year 06. The classes selected by the professional organization will be approved by the Department and the PD Steering Committee. To receive a copy of the PD FY 06 Training Schedule and class descriptions please contact the IDOT employees below. You can also contact your professional organization to see what classes they will be partnering with IDOT.

The Department hopes that the training partnership will help train the professional engineers and technicians in gaining a better understanding of the policies and procedure in all areas of Phase I & II and to help in creating a network of communication and the sharing of engineering knowledge.

The Department will continue to issue Professional Development Hours for all classes in which the participants attend. The technical training and the issuance of PDH's puts the Department in the fore front of ensuring that technical training is of high priority to the Department.

For more information about the partnering with the Department, please contact David D. Palia in District One at 847-705-4264 or by e-mail at paliadd@dot.il.gov or Brad Risinger in Employee Services at 217-782-3708 or by e-mail at risingerbd@dot.il.gov in the Central Office.

NOTICE OF TRAINING OPPORTUNITY

LAKELAND COLLEGE TRAINING COURSES

Lakeland College will be conducting QC/QA Training again this year. Please visit the web-site for further information. Information or schedules can also be obtained by contacting Marlene Browning.

Marlene K. Browning
Lake Land College
5001 Lake Land Blvd.
Mattoon, IL 61938-9336
Phone: (217) 234-5285
Fax: (217) 234-5381 E-Mail: idotqcqa@lakeland.cc.il.us
Internet Homepage: <http://www.lakeland.cc.il.us/idotqcqa>

NATIONAL HIGHWAY INSTITUTE (NHI) COURSES

The National Highway Institute (NHI) Course listing as well as other pertinent information is available at the following address:

<http://www.nhi.fhwa.dot.gov/default.asp>

NATIONAL TRANSIT INSTITUTE (NTI) COURSES

The National Transit Institute (NTI) Course listing as well as other pertinent information is available at the following address:

<http://www.ntionline.com/Courses.asp>