

# Professional Transportation Bulletin

PTB 141

July 20, 2006



**Illinois Department of Transportation**  
2300 South Dirksen Parkway, Springfield, Illinois 62764

**IMPORTANT NOTICE  
SPECIAL PROFESSIONAL  
TRANSPORTATION  
BULLETIN REVISIONS**

**Selection Date: October 4, 2006**

The following revisions have been made to this Special Professional Transportation Bulletin. If you downloaded the bulletin prior to the noted revision date, you should incorporate the revisions or download and use a new copy of the bulletin.

REVISION DATE: There are no revisions as of July 20, 2006.

**State Of Illinois  
Notice For Contact Information**

Department Of Transportation  
2300 South Dirksen Parkway  
Springfield, Illinois 62764

The Transportation Bulletin is the official Illinois Procurement Bulletin for the Illinois Department of Transportation as authorized by Section 15-1 of the Illinois Procurement Code, 30 ILCS 500/15-1. It is available on **IDOT's WEBSITE** at <http://www.dot.il.gov>.

**Professional Transportation Bulletin**

The Professional Transportation Bulletin Contains information pertaining to the advertisement for offers of interest for professional services for Department of Transportation projects.

Questions concerning this Bulletin should be directed to:

**Carrie Kowalski**  
**Consultant Unit Chief**  
E-mail: [Carrie.Kowalski@illinois.gov](mailto:Carrie.Kowalski@illinois.gov)  
Phone: 217-782-6916

Or mailing address:

Bureau of Design and Environment  
2300 South Dirksen Parkway  
Room 330  
Springfield, IL 62764

## TIPS & TOOLS

### To save:

To save a section "right click" on the link and select "save target as". To save   the entire bulletin select "Download Complete Bulletin". This will save the self-extracting zip file.

### To access web links:

The first time the web links are accessed the Internet browser will need to be set. *This will only have to be done one time.* When a web link is clicked on, a dialog box will appear:

"A Web Browser has not been specified. Do you want to configure the web link".

#### Click YES.

Another dialog box will appear. Select the drop down list "connection type" then select an Internet browser. (IDOT employees choose Internet Explorer.)

### Using Tools:



To see previous view



To scroll through pages

### To copy information from the Adobe .PDF file and paste it into a word processing application:

To view toolbar (if not open) **CLICK** Window on the menu bar then **CLICK** Show Tool Bar in the drop down box.

Select the text tool (Capital T) from your toolbar and highlight the text you want to copy. Open word processing application and paste.

To paste in Word. Open new document in Word **CLICK** Edit on the menu bar then **CLICK** Paste in the drop down box.

In order to make the information more legible, change your left and right margins to 1". You may have to put in some returns at the ends of the lines in the appropriate places to make it easier to read.

# Tentative Schedule For Professional Transportation Bulletins

ACTIVITY	PTB 142	PTB 143	PTB 144	PTB 145	PTB 146	PTB 147	PTB 148	PTB 149
<b>PUBLISH PTB</b>	<b>12-Oct-06</b>	<b>11-Jan-07</b>	<b>05-Apr-07</b>	<b>28-Jun-07</b>	<b>11-Oct-07</b>	<b>10-Jan-08</b>	<b>10-Apr-08</b>	<b>10-July-08</b>
STATEMENTS OF INTEREST ARE DUE	26-Oct-06	25-Jan-07	19-Apr-07	12-Jul-07	25-Oct-07	24-Jan-08	24-Apr-08	24-Jul-08
<b>SELECTION MEETING</b>	<b>03-Jan-07</b>	<b>28-Mar-07</b>	<b>20-Jun-07</b>	<b>12-Sep-07</b>	<b>09-Jan-08</b>	<b>02-Apr-08</b>	<b>25-Jun-08</b>	<b>24-Sep-08</b>

## **E-mail Instructions for Completing Statements of Interest for Electronic Submittal**

We require Statements of Interest (SOI) to be submitted through the e-mail system using Adobe Acrobat 4.0 version or greater.

Electronic submittals should be made to the Central Office only. The Central Office will forward the necessary consultant information to the Districts and other Bureaus or Divisions. All electronic submittals should be addressed to [SOIPTB@dot.il.gov](mailto:SOIPTB@dot.il.gov).

Each prequalified consultant firm has been assigned a unique 2 to 6 character Firm Name Code which must be used when submitting electronic Statements of Interest.

It is important that your e-mail appear exactly like the attached sample described below:  
(Note: ABC Engineering is used for example purposes only.)

- The Subject Line **must** read: FIRM NAME, PTB NUMBER, ITEMS

(Example: ABC Engineering PTB 122, Items 2, 15, & 22) If there will be more than one e-mail please note as follows: 1 of the total number etc.

(No additional data or extra characters -- # signs, parentheses, etc. -- should appear in the subject line.)

- The first line of your e-mail should indicate your Firm Name, PTB and Item Number(s) on which your firm is submitting.

(Example: ABC Engineering has submittals for PTB 122, Items 2, 15, and 22.)

- The second line should list the name and phone number of your firm's contact person.
- Each attachment must be labeled as indicated below:

1) For each Item on which you are submitting, use your 2-6 character Firm Name Code, immediately followed by the 2-digit Item Number (i.e., 01 through 99).

(Example: ABCENG02.pdf)

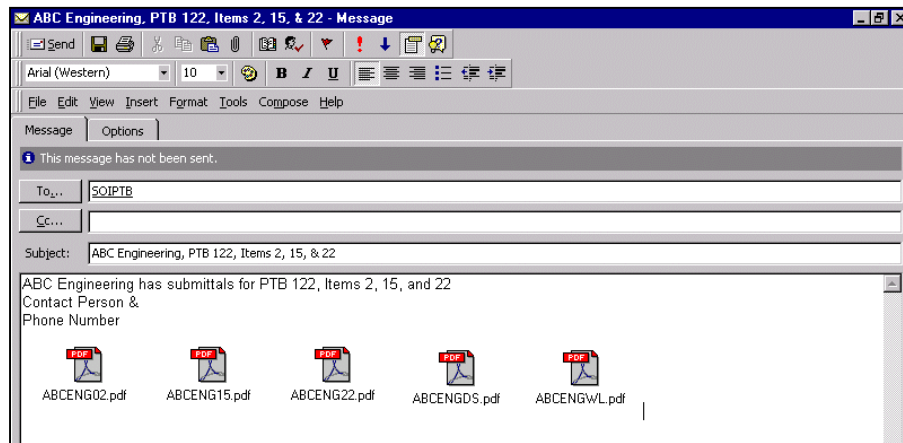
2) For your firm's Current Obligation Form, use your 2-6 character Firm Name Code, followed by WL.

(Example: ABCENGWL.pdf)

3) For your firm's Disclosure Forms, use your 2-6 character Firm Name Code, followed by DS.

(Example: ABCENGDS.pdf)

Please review the following example:



- ABCENG02, ABCENG15 and ABCENG22 are the Statements of Interest for the submitted Items and must include Exhibit A. Following Exhibit A, include resumes of the key management personnel and project staff listed in Exhibit A. If Exhibit B is required, include it next, followed by resumes of individuals listed on page 2 of Exhibit B.
- ABCENGWL is the Current Obligation Form. Only one copy of the Current Obligation Form is required. Do not send the instructions.
- ABCENGDS is the Disclosure Forms. Include a cover sheet with PTB #\_\_\_ & Item(s) \_\_\_\_, Form A, Form B and Form for Offerors That Have Previously Submitted Form A. Only one copy of the Disclosure Forms is required. Do not send the instructions.

The size limitation on an incoming e-mail is 2 MB. If you exceed this limit, you must separate contents into multiple e-mail. Identify the number of e-mails being sent, (i.e. 1 of 3) Scanned images, color graphics, and photographs which are converted to Adobe Portable Document Files (PDF) can be very large.

Signatures must be scanned, then cut/copied and pasted into the appropriate signature blocks. The file should then be converted to a PDF.

The Exhibits, Current Obligation and Disclosure Forms are available as word documents and should be downloaded from our web-site: <http://www.dot.il.gov/desenv/deform.html>  
The bookmarks for the Exhibits, Current Obligations and Disclosure forms are also linked to the web-site.

The Word documents are labeled as follows:

Exhibits = EXHAB  
Current Obligation Form = CURRENT OBLIGATIONS  
Disclosure Forms = DISC2

Complete the Word documents then convert them to Adobe PDF for the submittal.

**Do not send zipped files, as we do not have the software to open them.**

If you have questions about electronic submittals, please contact Carrie Kowalski at [Carrie.Kowalski@illinois.gov](mailto:Carrie.Kowalski@illinois.gov).

# NOTICE

## 2007 STANDARD SPECIFICATIONS FOR ROAD AND BRIDGE CONSTRUCTION

Orders are now being taken for the **2007 Standard Specifications for Road and Bridge Construction**. This book, which will become effective January 1, 2007, will be distributed in August 2006. The \$35.00 purchase price for this book also includes the Supplemental Specifications and Recurring Special Provisions which are distributed to registered book-holders annually.

To order, follow the instructions below:

1. Use this order form only for the above book. Do not include other books or manuals on this sheet. (A single payment, however, may be used to cover the cost of multiple orders.)

2. Complete:

**Company Name:** \_\_\_\_\_

**Street Address:** \_\_\_\_\_  
(P. O. Box not accepted)

**City:** \_\_\_\_\_ **State:** \_\_\_\_\_ **Zip:** \_\_\_\_\_

**Attention:** \_\_\_\_\_

**Daytime Phone:** (        ) \_\_\_\_\_

**Daytime Fax:** (        ) \_\_\_\_\_

3. Compute your order amount (payment must be included):

2007 Standard Specifications for Road and Bridge Construction		
_____ No. of Copies	x \$35.00 each	= \$ _____

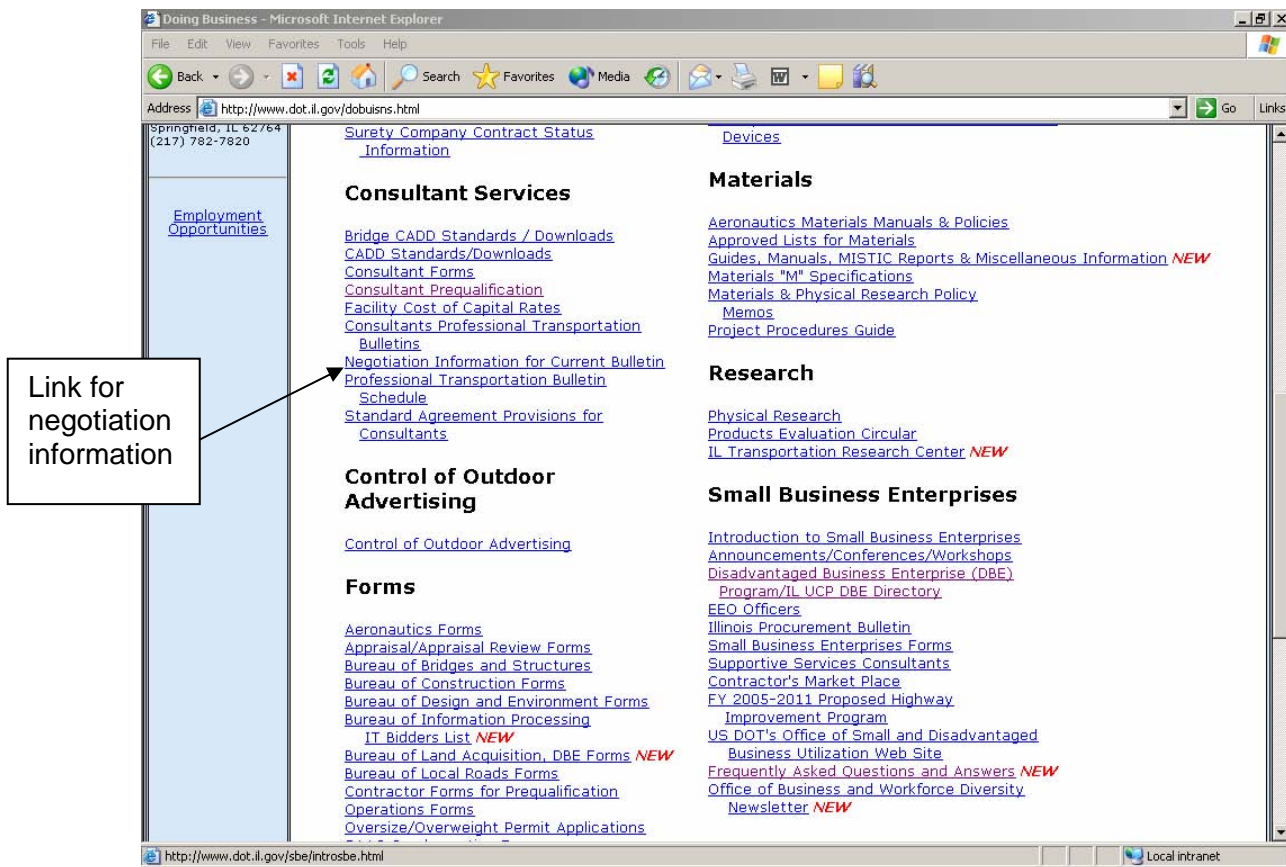
4. Make check payable to "State Treasurer of Illinois" for the total order amount.
5. Mail order form and check to:

**Illinois Department of Transportation**  
**Manual Sales – Room 128 East**  
**2300 South Dirksen Parkway**  
**Springfield, IL 62764**



# NOTICE

Proposed Negotiation Meeting information for Items will be available at the following link: <http://www.dot.il.gov/dobuisns.html>



- **Region 1**
- **Diane O’Keefe**
  - **District One**
    - **Items 1-3**
- **Region 2**
- **Gregory Mounts**
  - **District 2**
    - **Items 4-8**
  - **District 3**
    - **Items 9-17**
- **Region 3**
- **Joseph Crowe**
  - **District 4**
    - **Items 18**
- **Region 4**
- **Christine Reed**
  - **District 6**
    - **Item 19-23**
  - **District 7**
    - **Item 24-25**

## **Illinois Department of Transportation and ACEC Announces Context Sensitive Solutions Training Partnership**

The Illinois Department of Transportation is proud to announce the start of our new Context Sensitive Training Classes. The Program Development Technical Training Program, in partnership with the American Council of Engineering Companies, will offer these classes beginning in August 2006. Over the past two years, the Department and the Federal Highway Administration have worked together to develop two new CSS training classes, the Awareness Class and the Approach Class. The classes will be presented by IDOT and FHWA employees who were involved in the development of the training classes.

The Awareness class is a half day class that is designed for managers and supervisors. This class discusses the Department's Policy on CSS, BDE Procedure Memorandum 48-06 and the Department's Stakeholder Involvement Plan. The two day Approach class is for those participants who will be involved in the daily activities of a CSS project. This two day class follows a CSS project through all phases from Planning to Operations while using class exercises and a case study to ensure the attendees have a clear understanding of the CSS process. See attached class descriptions.

Registration for the classes will be handled by the American Council of Engineering Companies in Springfield starting July 17, 2006. Consultants will be able to register by phone, e-mail or by fax, indicating the name of the class, date, location and the number of attendees.

The Awareness classes for consultants are being held in Schaumburg on October 3, 2006 and in Springfield on October 5, 2006. There is no limit at this time to the number of attendees for the Awareness class.

Consultants will be able to register for the Approach classes that will start August 29-30, 2006 in District 3 and end May 23-24, 2007 in Collinsville, District 8. There will be two Approach classes presented in Schaumburg; Springfield and Collinsville. The Approach classes will be presented at all Districts offices. Due to limited seating, it is imperative that the names of the employees who are being registered are in priority order. Consultants may register for more than one class location, in case the first selection is already filled. See attached CSS Approach Class Training Schedule for available dates and locations.

As part of the CSS training, IDOT will issue Professional Development Hours for each of the classes. For attending the Awareness class, 3 PDH's will be issued and for the Approach class, 12 PDH's. Certificates will be issued at the end of each class.

If you need any additional information about the CSS training or registration, please contact Brad Risinger at 217-782-3708 or at [brad.risinger@illinois.gov](mailto:brad.risinger@illinois.gov) or David Palia at 847-705-4264 or at [david.palia@illinois.gov](mailto:david.palia@illinois.gov). You can also contact Barb Dirks at the ACEC office in Springfield at 217-529-7430.

## TECHNICAL TRAINING CLASS DESCRIPTION FOR PROGRAM DEVELOPMENT

---

COURSE TITLE: Context Sensitive Solutions (CSS) Approach Class

LENGTH: 2 Full Days

CLASS SIZE: 25-30

DESCRIPTION: This class is designed to provide the employees in Phase I & II with the basic knowledge and skills to collaboratively develop transportation projects by addressing the needs of a broad range of stakeholders and special interest groups. The employees will learn the CSS process by using actual case studies to identify critical issues early in the planning, context audit processes and programming. The employee will learn to identify and involve stakeholders in the stakeholder involvement process as outlined by the department. The class will discuss how to evaluate the alternatives in design flexibility and to document all phases of the CSS process to ensure compliance with the department's policy. The class will also discuss on how to integrate aesthetics into transportation projects. The class will discuss in detail the CSS process as the project moves through the planning, design, construction and operation phases.

OBJECTIVES: Upon completion of the class, participants should have an understanding of the following:

- the history of CSS from the federal and state perspectives, including Public Act 93-0545;
- the departmental policy D & E 21 on CSS;
- the understanding of BDE PM 48-06
- the concept and basic principles of CSS;
- how to identify the context of the project
- how to identify and engage stakeholders utilizing the department's Stakeholder Involvement Process (SIP);
- how to identify and include multimodal transportation needs in the SIP;
- how to build community consensus in the SIP;
- how to apply flexibility in design standards to facilitate implementation of CSS; and
- the importance of documenting decisions made during the project development process including identification of which milestones need to be documented.

FOR WHOM DESIRED: This class is intended for all employees in Phase I & II who will be involved in the CSS process during project development. The class will also be of value to those employees in the Bureaus of Construction and Operations.

PREREQUISITES: None

COURSE SCHEDULING: Brad Risinger, (217) 782-3708

COURSE COORDINATION: David Palia, (847) 705-4264

## **TECHNICAL TRAINING CLASS DESCRIPTION FOR PROGRAM DEVELOPMENT**

---

**COURSE TITLE:** Context Sensitive Solutions (CSS) Awareness Class

**LENGTH:** 1/2 Day (Half-Day)

**CLASS SIZE:** 25-40

**DESCRIPTION:** This class is designed to provide Phase I & II supervisors with the understanding of the department's policy on CSS and how the CSS process is addressed in all phases from planning through operations.

**OBJECTIVES:** Upon completion of the class, participants should have an understanding of the following:

1. the history of CSS from the federal and state perspectives;
2. the CSS concept and basic principles;
3. the departmental policy on CSS;
4. the guidelines for the stakeholder involvement process; and
5. the principles of flexibility in design.

**FOR WHOM DESIRED:** The class is for all supervisors in Phase I & II who will be involved in the CSS process during project development. The class will also be of value to those supervisors in the Bureaus of Construction and Operations.

**PREREQUISITES:** None

**COURSE SCHEDULING:** Brad Risinger, (217) 782-3708

**COURSE COORDINATION:** David Palia, (847) 705-4264

**FY 2007  
SCHEDULED PROGRAM DEVELOPMENT  
CONTEXT SENSITIVE SOLUTIONS APPROACH CLASS**

**STARTED 6-30-06 Rev. 2**

<b>Course Description</b>	<b>Course (Days)</b>	<b>Instructors (District/C.O.)</b>	<b>Registration Deadline</b>	<b>EIS Reg. No.</b>	<b>Date/Location of Courses</b>
CSS APPROACH CLASS	2.0	Adam Lintner (1) L.I. Rick Wanner (1) Deana Hermes (2) Jason Stringer (2) Chief Counsel Office Pam Heimsness (FHWA)	07/28/06	PD393	Ottawa August 29-30, 2006
CSS APPROACH CLASS	2.0	Candace Sauermann (8) L.I. Paula Green (4) Glenn McLernon (9) Carl Mikyska (OP&P) Lance Jones (CCO) JD Stevenson (FHWA)	07/28/06	PD394	Paris September 6-7,2006
CSS APPROACH CLASS	2.0	Candace Sauermann (8) L.I. Paula Green (4) Glenn McLernon (9) Carl Mikyska (OP&P) Lance Jones (CCO) JD Stevenson (FHWA)	09/11/06	PD395	Effingham October 11-12, 2006
CSS APPROACH CLASS	2.0	Adam Lintner (1) L.I. Rick Wanner (1) Deana Hermes (2) Jason Stringer (2) Chief Counsel Office Pam Heimsness (FHWA)	09/25/06	PD396	Schaumburg October 25-26, 2006

**FY 2007  
SCHEDULED PROGRAM DEVELOPMENT  
CONTEXT SENSITIVE SOLUTIONS APPROACH CLASS**

**STARTED 6-30-06 Rev. 2**

<b>Course Description</b>	<b>Course (Days)</b>	<b>Instructors (District/C.O.)</b>	<b>Registration Deadline</b>	<b>EIS Reg. No.</b>	<b>Date/Location of Courses</b>
CSS APPROACH CLASS	2.0	Candace Sauermann (8) L.I. Paula Green (4) Glenn McLernon (9) Carl Mikyska (OP&P) Lance Jones (CCO) JD Stevenson (FHWA)	10/13/06	PD397	Springfield November 14-15, 2006
CSS APPROACH CLASS	2.0	Adam Lintner (1) L.I. Rick Wanner (1) Deana Hermes (2) Jason Stringer (2) Chief Counsel Office Pam Heimsness (FHWA)	10/27/06	PD398	Peoria November 29-30, 2006
CSS APPROACH CLASS	2.0	Adam Lintner (1) L.I. Rick Wanner (1) Deana Hermes (2) Jason Stringer (2) Chief Counsel Office Pam Heimsness (FHWA)	12/18/06	PD399	Dixon January 24-25, 2007
CSS APPROACH CLASS	2.0	Candace Sauermann (8) L.I. Paula Green (4) Glenn McLernon (9) Carl Mikyska (OP&P) Lance Jones (CCO) JD Stevenson (FHWA)	12/29/06	PD400	Collinsville January 30-31, 2007

**FY 2007  
SCHEDULED PROGRAM DEVELOPMENT  
CONTEXT SENSITIVE SOLUTIONS APPROACH CLASS**

**STARTED 6-30-06 Rev. 2**

<b>Course Description</b>	<b>Course (Days)</b>	<b>Instructors (District/C.O.)</b>	<b>Registration Deadline</b>	<b>EIS Reg. No.</b>	<b>Date/Location of Courses</b>
CSS APPROACH CLASS	2.0	Adam Lintner (1) L.I. Rick Wanner (1) Deana Hermes (2) Jason Stringer (2) Chief Counsel Office Pam Heimsness (FHWA)	02/21/07	PD401	Peoria March 21-22,2007
CSS APPROACH CLASS	2.0	Candace Sauermann (8) L.I. Paula Green (4) Glenn McLernon (9) Carl Mikyska (OP&P) Lance Jones (CCO) JD Stevenson (FHWA)	02/28/07	PD402	Carbondale March 28-29,2007
CSS APPROACH CLASS	2.0	Candace Sauermann (8) L.I. Paula Green (4) Glenn McLernon (9) Carl Mikyska (OP&P) Lance Jones (CCO) JD Stevenson (FHWA)	03/26/07	PD403	Springfield April 25-26, 2007
CSS APPROACH CLASS	2.0	Adam Lintner (1) L.I. Rick Wanner (1) Deana Hermes (2) Jason Stringer (2) Chief Counsel Office Pam Heimsness (FHWA)	04/16/07	PD404	Schaumburg May 16-17,2007

**FY 2007  
SCHEDULED PROGRAM DEVELOPMENT  
CONTEXT SENSITIVE SOLUTIONS APPROACH CLASS**

**STARTED 6-30-06 Rev. 2**

<b>Course Description</b>	<b>Course (Days)</b>	<b>Instructors (District/C.O.)</b>	<b>Registration Deadline</b>	<b>EIS Reg. No.</b>	<b>Date/Location of Courses</b>
CSS APPROACH CLASS	2.0	Candace Sauermann (8) L.I. Paula Green (4) Glenn McLernon (9) Carl Mikyska (OP&P) Lance Jones (CCO) JD Stevenson (FHWA)	04/23/07	PD405	Collinsville May 23-24, 2007



**FY 2007  
SCHEDULED PROGRAM DEVELOPMENT  
CONTEXT SENSITIVE SOLUTIONS APPROACH CLASS**

**ADDITIONAL CLASSES IF NEEDED**

<b>Course Description</b>	<b>Course (Days)</b>	<b>Instructors (District/C.O.)</b>	<b>Registration Deadline</b>	<b>EIS Reg. No.</b>	<b>Date/Location of Courses</b>
CSS APPROACH CLASS NORTHERN CADRE	2.0	Adam Lintner (1) L.I. Rick Wanner (1) Deana Hermes (2) Jason Stringer (2) Chief Counsel's Office Pam Heimsness (FHWA)			Additional Class Feb. 28-Mar 1, 2007 TBA
CSS APPROACH CLASS NORTHERN CADRE	2.0	Adam Lintner (1) L.I. Rick Wanner (1) Deana Hermes (2) Jason Stringer (2) Chief Counsel's Office Pam Heimsness (FHWA)			Additional Class June 19-20,2007 TBA
CSS APPROACH CLASS SOUTHERN CADRE	2.0	Candace Sauermann (8) L.I. Paula Green (4) Glenn McLernon (9) Carl Mikyska (OP&P) Chief Counsel's Office JD Stevenson (FHWA)			Additional Class February 27-28,2007 TBA
CSS APPROACH CLASS SOUTHERN CADRE	2.0	Candace Sauermann (8) L.I. Paula Green (4) Glenn McLernon (9) Carl Mikyska (OP&P) Chief Counsel's Office JD Stevenson (FHWA)			Additional Class June 20- 21, 2007 TBA

**ILLINOIS DEPARTMENT OF TRANSPORTATION  
NOTICE  
For  
VENDOR DELINQUENT DEBT**

Effective March 1, 2006 prior to awarding any contract or entering into any agreement, state agencies are required to inquire, using the vendor FEIN or SSN, the Comptrollers Offset System to determine if any delinquent debt has been placed by a state agency. This inquiry shall be made for the prime vendor and each known subcontractor/sub consultant.

Any bidder/offerer as a prime contractor or consultant that is found to have delinquent debt will be considered not responsive. No award can be made.

If a subcontractor/subconsultant is found to have delinquent debt approval can not be given until the debt has been satisfied. The Department will notify the prime contractor/consultant when a subcontractor/subconsultant is found to be delinquent.

A firm may contact The Office of the Comptroller to determine if they have delinquent debt. All consultants, contractors, subconsultants and subcontractors are strongly encouraged to do so now, and to satisfy any outstanding debt/issues, to avoid their bid/proposal being declared not responsive or delays in award due to subcontractor/subconsultant issues.

For PTB 140 and future Professional Transportation Bulletins the following form must be completed and submitted with your Statements of Interest. The form and an example are included in this PTB. Please review the form and the example.

Any prime consultant that is found to have delinquent dept will not be considered for selection.

Questions concerning consultants and/or subconsultants may be directed to Cheryl Cathey at 217-782-7557.

**PTB # \_\_\_\_\_ & Item(s) # \_\_\_\_\_**

**DELINQUENT PAYMENT FORM FOR ILLINOIS**  
**DEPARTMENT OF TRANSPORTATION**

**Delinquent Payment.** The CONSULTANT certifies that it, or any affiliate, is not barred from being awarded a contract under 30 ILCS 500. Section 50-11 prohibits a person from entering into a contract with a State agency if it knows or should know that it, or any affiliate, is delinquent in the payment of any debt to the State as defined by the Debt Collection Board. Section 50-12 prohibits a person from entering into a contract with the State agency if it, or any affiliate, has failed to collect and remit Illinois Use Tax on all sales of tangible personal property into the State of Illinois in accordance with the provisions of the Illinois Use Tax Act. The CONSULTANT further acknowledges that the contracting State agency may declare the contract void if this certification is false or if the CONSULTANT or any affiliate is determined to be delinquent in the payment of any debt to the State during the term of the contract.

I certify that \_\_\_\_\_ with the FEIN or SSN number of \_\_\_\_\_  
(FIRM Name) (FEIN/SSN)

is in compliance with the Delinquent Payment Statement as stated above.

\_\_\_\_\_  
(SIGNATURE & DATE)

List all known subconsultants and the PTB Item(s):

\_\_\_\_\_  
\_\_\_\_\_  
\_\_\_\_\_  
\_\_\_\_\_  
\_\_\_\_\_  
\_\_\_\_\_

One Adobe PDF document must be submitted with the Statement of Interest for the prime and the single file must contain each known subconsultant the prime will be using.

Label with firm code and DP and submit as an Adobe PDF document.

Example:

Firm SOI CODE: (abcengDP.pdf) this would be one document containing the prime's statement of compliance and this file would also contain the subconsultant(s) certification of compliance.

**EXAMPLE ONLY**

**(Red text is for information only)**

**PTB # 140 & Item(s) # 2, 3, & 5**

List all items prime has in for Statements of Interest

**DELINQUENT PAYMENT FORM FOR ILLINOIS**  
**DEPARTMENT OF TRANSPORTATION**

**Delinquent Payment.** The CONSULTANT certifies that it, or any affiliate, is not barred from being awarded a contract under 30 ILCS 500. Section 50-11 prohibits a person from entering into a contract with a State agency if it knows or should know that it, or any affiliate, is delinquent in the payment of any debt to the State as defined by the Debt Collection Board. Section 50-12 prohibits a person from entering into a contract with the State agency if it, or any affiliate, has failed to collect and remit Illinois Use Tax on all sales of tangible personal property into the State of Illinois in accordance with the provisions of the Illinois Use Tax Act. The CONSULTANT further acknowledges that the contracting State agency may declare the contract void if this certification is false or if the CONSULTANT or any affiliate is determined to be delinquent in the payment of any debt to the State during the term of the contract.

I certify that ABC Engineering, Inc. with the FEIN or SSN number of 555-55-5555 is in compliance with the Delinquent Payment Statement as stated above. SIGNED & DATED. the signature is from the applicable firm, do not sign for the SUBS.

**This is for all subconsultants the prime will be using on all items on this PTB. If you are not using subconsultants write NONE.**

List all known subconsultants and the PTB Item(s):

Joes Engineers, Inc. Item 2 & 5

Bridge, Inc., Item 3

Survey Corp. Inc. Item 2, 3, & 5

\_\_\_\_\_  
\_\_\_\_\_  
\_\_\_\_\_  
\_\_\_\_\_

One Adobe PDF document must be submitted with the Statement of Interest for the prime and the single file must contain each known subconsultant the prime will be using.

Label with firm code and DP and submit as an Adobe PDF document.

Example:

Firm SOI CODE: (abcengDP.pdf) this would be one document containing the prime's statement of compliance and this file would also contain the subconsultant(s) certification of compliance.

**THIS WOULD BE SUBMITTED AS ONE PDF FILE AND WOULD BE NAMED "ABCENGDP.PDF. THE FILE WOULD CONTAIN FOUR PAGES, CONSISTING OF ONE FOR THE PRIME AND ONE FOR EACH OF THE SUBS.**

**EXAMPLE ONLY**  
**(Red text is for information only)**

**PTB # 140 & Item(s) # 2 & 5**

**Items would be only the ones this sub is doing for this prime. If a subconsultant is listed on multiple prime the subs must submit for each prime.**

**DELINQUENT PAYMENT FORM FOR ILLINOIS**  
**DEPARTMENT OF TRANSPORTATION**

**Delinquent Payment.** The CONSULTANT certifies that it, or any affiliate, is not barred from being awarded a contract under 30 ILCS 500. Section 50-11 prohibits a person from entering into a contract with a State agency if it knows or should know that it, or any affiliate, is delinquent in the payment of any debt to the State as defined by the Debt Collection Board. Section 50-12 prohibits a person from entering into a contract with the State agency if it, or any affiliate, has failed to collect and remit Illinois Use Tax on all sales of tangible personal property into the State of Illinois in accordance with the provisions of the Illinois Use Tax Act. The CONSULTANT further acknowledges that the contracting State agency may declare the contract void if this certification is false or if the CONSULTANT or any affiliate is determined to be delinquent in the payment of any debt to the State during the term of the contract.

**Page 2 would be a subconsultant**

I certify that **Joes Engineers, Inc.**, with the FEIN or SSN number of **666-66-6666**, is in compliance with the Delinquent Payment Statement as stated above.

**SIGNED AND DATED BY APPLICABLE SUBCONSULTANT FIRM**

List all known subconsultants and the PTB Item(s):

N/A  
\_\_\_\_\_  
\_\_\_\_\_  
\_\_\_\_\_  
\_\_\_\_\_  
\_\_\_\_\_  
\_\_\_\_\_

**INFORMATION BELOW IS FOR THE SUBMITTAL BY THE PRIME. THE SUBCONSULTANT CERTIFICATION WOULD BE A PART OF THE PRIME SUBMITTAL.**

One Adobe PDF document must be submitted with the Statement of Interest for the prime and the single file must contain each known subconsultant the prime will be using.

Label with firm code and DP and submit as an Adobe PDF document.

Example:

Firm SOI CODE: (abcengDP.pdf) this would be one document containing the prime's statement of compliance and this file would also contain the subconsultant(s) certification of compliance.

**EXAMPLE ONLY**

**(Red text is for information only)**

**PTB # 140 & Item(s) # 3**

**Items would be only the ones this sub is doing for this prime. If a subconsultant is listed on multiple prime the subs must submit for each prime.**

**DELINQUENT PAYMENT FORM FOR ILLINOIS  
DEPARTMENT OF TRANSPORTATION**

**Delinquent Payment.** The CONSULTANT certifies that it, or any affiliate, is not barred from being awarded a contract under 30 ILCS 500. Section 50-11 prohibits a person from entering into a contract with a State agency if it knows or should know that it, or any affiliate, is delinquent in the payment of any debt to the State as defined by the Debt Collection Board. Section 50-12 prohibits a person from entering into a contract with the State agency if it, or any affiliate, has failed to collect and remit Illinois Use Tax on all sales of tangible personal property into the State of Illinois in accordance with the provisions of the Illinois Use Tax Act. The CONSULTANT further acknowledges that the contracting State agency may declare the contract void if this certification is false or if the CONSULTANT or any affiliate is determined to be delinquent in the payment of any debt to the State during the term of the contract.

**Page 3 would be a subconsultant**

I certify that **Bridge, Inc.**, with the FEIN or SSN number of **777-77-7777**, is in compliance with the Delinquent Payment Statement as stated above. **SIGNED AND DATED BY APPLICABLE SUBCONSULTANT FIRM**

List all known subconsultants and the PTB Item(s):

N/A  
\_\_\_\_\_  
\_\_\_\_\_  
\_\_\_\_\_  
\_\_\_\_\_  
\_\_\_\_\_

**INFORMATION BELOW IS FOR THE SUBMITTAL BY THE PRIME. THE SUBCONSULTANT CERTIFICATION WOULD BE A PART OF THE PRIME SUBMITTAL.**

One Adobe PDF document must be submitted with the Statement of Interest for the prime and the single file must contain each known subconsultant the prime will be using.

Label with firm code and DP and submit as an Adobe PDF document.

Example:

Firm SOI CODE: (abcengDP.pdf) this would be one document containing the prime's statement of compliance and this file would also contain the subconsultant(s) certification of compliance.

**EXAMPLE ONLY**  
**(Red text is for information only)**

**PTB # 140 & Item(s) # 2, 3 & 5**

**Items would be only the ones this sub is doing for this prime. If a subconsultant is listed on multiple prime the subs must submit for each prime.**

**DELINQUENT PAYMENT FORM FOR ILLINOIS**  
**DEPARTMENT OF TRANSPORTATION**

**Delinquent Payment.** The CONSULTANT certifies that it, or any affiliate, is not barred from being awarded a contract under 30 ILCS 500. Section 50-11 prohibits a person from entering into a contract with a State agency if it knows or should know that it, or any affiliate, is delinquent in the payment of any debt to the State as defined by the Debt Collection Board. Section 50-12 prohibits a person from entering into a contract with the State agency if it, or any affiliate, has failed to collect and remit Illinois Use Tax on all sales of tangible personal property into the State of Illinois in accordance with the provisions of the Illinois Use Tax Act. The CONSULTANT further acknowledges that the contracting State agency may declare the contract void if this certification is false or if the CONSULTANT or any affiliate is determined to be delinquent in the payment of any debt to the State during the term of the contract.

**Page 4 would be a subconsultant**

I certify that **Survey Corp., Inc.**, with the FEIN or SSN number of **888-88-8888**, is in compliance with the Delinquent Payment Statement as stated above. **SIGNED AND DATED BY APPLICABLE SUBCONSULTANT FIRM**

List all known subconsultants and the PTB Item(s):

N/A  
\_\_\_\_\_  
\_\_\_\_\_  
\_\_\_\_\_  
\_\_\_\_\_  
\_\_\_\_\_  
\_\_\_\_\_

**INFORMATION BELOW IS FOR THE SUBMITTAL BY THE PRIME. THE SUBCONSULTANT CERTIFICATION WOULD BE A PART OF THE PRIME SUBMITTAL.**

One Adobe PDF document must be submitted with the Statement of Interest for the prime and the single file must contain each known subconsultant the prime will be using.

Label with firm code and DP and submit as an Adobe PDF document.

Example:

Firm SOI CODE: (abcengDP.pdf) this would be one document containing the prime's statement of compliance and this file would also contain the subconsultant(s) certification of compliance.

# NOTICE FOR METHOD OF CONTRACTING

For any project advertised after December 1, 2005, FHWA will not participate in projects using the DLM method of payment. With the new Federal transportation bill and to allow greater flexibility with funds, we are exploring the option of using the Cost Plus Fixed Fee Method (CPFF) of compensation for our consulting engineering projects.

The advertisements designate the method of compensation to be used.

**NOTE:**

CPFF= Fixed Fee (FF) + direct labor (DL) + all direct costs (DC) + overhead (OH)

Where: Overhead =overhead% x labor

Fixed Fee = 14.5% (Direct labor + in-house direct costs + overhead + R x Direct Labor)

(Currently, for the fixed fee portion the overhead % is no less than 1.4)

R=Complexity Factor



# NOTICE FOR STRUCTURAL DESIGN SPECIFICATIONS

**Structure Design Specification Selection Table:** All highway structures advertised within PTB-141 and in future bulletins shall be designed using the design specifications indicated in the table below unless otherwise specified by the Department.

<b>STRUCTURAL DESIGN SPECIFICATION SELECTION TABLE:</b>	
<b>New or Complete Replacement Structure Projects:</b>	
PPC Deck Beams, Retaining Walls & Concrete Culverts	AASHTO Standard Spec. for Highway Bridges
All Other Structure Types	AASHTO LRFD Bridge Design Spec.
<b>Structure Rehabilitation Projects:</b>	
For existing ASD or LFD Designs	AASHTO Standard Spec. for Highway Bridges
For existing LRFD Designs	AASHTO LRFD Bridge Design Spec.

LRFD: Load Resistance Factor Design

LFD: Load Factor Design

ASD: Allowable Stress Design

# Introduction

**STATE OF ILLINOIS**  
Department of Transportation  
2300 South Dirksen Parkway  
Springfield, Illinois 62764

**PROFESSIONAL TRANSPORTATION BULLETIN 141**  
**July 20, 2006**

This bulletin is the official notice of needed professional services for the Illinois Department of Transportation (IDOT).

This bulletin is sent to each professional consultant on IDOT's prequalified list. A Professional firm who is not prequalified may obtain the necessary information and forms to become prequalified from the INTERNET at: <http://www.dot.gov.il/Doing Business/Consultant Services/Consultant Prequalification>.

This is not an invitation for bids. Firms properly prequalified for any of the projects listed herein may indicate their desire to be considered for selection by submitting a Statement of Interest for the project.

IDOT shall not discriminate on the basis of race, color, national origin, or sex in the award and performance of any DOT-assisted contract or in the administration of its DBE Program or the requirements of 49 CFR part 26. IDOT shall take all necessary and reasonable steps under 49 CFR part 26 to ensure nondiscrimination in the award and administration of DOT-assisted contracts.

**STATEMENTS MUST BE RECEIVED BY THE BUREAU OF DESIGN AND ENVIRONMENT AT THE ABOVE ADDRESS AND IF APPLICABLE, THE APPROPRIATE DISTRICT ENGINEER OR BUREAU CHIEF PRIOR TO 4:30 P.M. LOCAL TIME, August 3, 2006. STATEMENTS RECEIVED AFTER THIS TIME WILL NOT BE CONSIDERED.**

The selection of professional consultants by IDOT is not based on competitive bidding but on the firm's professional qualifications, experience and expertise of key personnel to be assigned to the project with consideration also given to:

- 1) Ability to complete the work in the time required and the firm's existing workload.
- 2) The firm's proximity to the project, when important.
- 3) Extent of work which must be subcontracted by the firm and their proposed method of accomplishing the project objectives.
- 4) Financial evaluation of the firm and its accounting methods.
- 5) Performance rating for past work done for IDOT, if applicable.

All members of the Consultant Selection Committee will be **unavailable** to discuss specifics of projects listed herein during the two-week period preceding the Selection Committee Meeting.

Departmental procedures ensure that all members of the Consultant Selection Committee are provided with detailed information concerning all Statements of Interest submitted by all consultants. Please do not send letters expressing your interest in various projects and/or correspondence concerning your firm via Overnight/Federal Express mail to members of the Consultant Selection Committee.

# Guidelines for Submitting Statements of Interest (SOI)

**Firms must be prequalified in all of the advertised areas listed in the project advertisement even if they plan to subcontract part of the project, except where noted in a specific project advertisement.**

Prequalified firms may indicate their desire to be considered for selection on any of the projects listed herein by submitting a separate Statement of Interest (SOI) for each project that includes the following:

- 1) A cover sheet, clearly identifying the PTB Number, Item Number, Firm Name, and IDHR number. No additional information is required on the cover.
- 2) A brief statement of the firm's interest in performing the work. (Should not be longer than 2 pages)
- 3) A Table of Contents with page numbers, identifying the approach, exhibits, resumes, etc.
- 4) No color graphics/photographs should be included in the submittal because of the size limitation on incoming e-mail is 2 MB.
- 5) Complete Exhibit A as follows: (This should follow the Table of Contents in the SOI)
  - a) List the required key personnel to match required prequalification categories and any additional personnel requirements designated in the project advertisement.
  - b) Attach resumes of all personnel listed in a) above. Individual resumes should not exceed two pages and must be relevant to the expertise required for the specific project.
  - c) Designate the estimated time required to complete the project using the personnel presented. A completion date and/or number of months to complete the project should also be provided.
  - d) Identify proposed subconsultants and item(s) of work they will perform. Subconsultants must be prequalified in the area of work they will be performing.
- 6) Projects involving Location Design Studies (Reconstruction/Major Rehabilitation and New Construction/Major Reconstruction) and all Environmental Reports (Environmental Assessment and Environmental Impact Statements) require completion of **Exhibit B**.
- 7) Experience of the staff or firm in accomplishing similar types of work should be shown for only the most recent projects and should be concise and relevant to the expertise required for the specific project. If there are several projects with the same work completed, then one summary would be adequate with each location and the project manager noted for each. This information should be shown at the end of the SOI.
- 8) Any other information specifically requested in the project advertisement should be included where specified in the submittal.
- 9) The Instructions for completing the Current Obligation documents immediately precede the Current Obligation forms. The Current Obligation Forms should be a separate document from the SOI. Only one copy, sent to the Central Bureau of Design and Environment, is required.
- 10) Instructions for completing **Forms A** and **B** are included on pages 1 and 2 immediately preceding **Forms A** and **B**. Disclosure Forms should be a separate document from the SOI. A cover should be provided with a statement similar to the following: "*The **Form A** disclosures (or Certification Statement) and the **Form B** disclosures are being submitted for PTB # \_\_\_\_\_, Item(s): \_\_\_\_\_.*" Only one copy, sent to the Central Bureau of Design and Environment, is required. In addition, **Form B** should not include IDOT projects, since this information is already included in the **Current Obligations**.

# Guidelines for Submitting Statements of Interest (SOI)

11) Exhibit A, Exhibit B, the Current Obligations Form, and the Disclosure Forms are available as word documents on our web site: <http://www.dot.il.gov/desenv/deform.html>. The Disclosure is labeled as DISC2. The Exhibits are labeled as EXHAB. The Current Obligations are labeled CURRENT OBLIGATIONS.

The following addresses may be used when a hard copy of the SOI is requested in the advertisement:

Illinois Department of Transportation  
Ms. Cheryl Cathey  
Bureau of Design and Environment  
Attn: Consultant Unit (Room 330)  
2300 South Dirksen Parkway  
Springfield, Illinois 62764

Regional/District copies should be addressed as follows:

## Region 1

Ms. Diane O'Keefe  
**District 1**  
201 West Center Court  
Schaumburg, IL 60196

## Region 2

Mr. Gregory Mounts  
**District 2**  
819 Depot Avenue  
Dixon, IL 61021

Mr. Gregory Mounts  
**District 3**  
700 East Norris Drive  
P.O. Box 697  
Ottawa, IL 61350

## Region 3

Mr. Joe Crowe  
**District 4**  
401 Main Street  
Peoria, IL 61602

Mr. Joe Crowe  
**District 5**  
Route 133 West  
P.O. Box 610  
Paris, IL 61944

## Region 4

Ms. Chris Reed  
**District 6**  
126 East Ash St.  
Springfield, IL 62704

Ms. Chris Reed  
**District 7**  
400 West Wabash  
Effingham, IL 62401

## Region 5

Ms. Mary Lamie  
**District 8**  
1102 Eastport Plaza Drive  
Collinsville, IL 62234

Ms. Mary Lamie  
**District 9**  
State Transportation Building  
P.O. Box 100  
Carbondale, IL 62903

To verify that the Department has received your Statements of Interest you may call (217)785-4784.

## Table Of Contents

### PTB 141

<u>Item #</u>	<u>County</u>	<u>Description</u>
<b><u>Region 1 /District 1</u></b>		
1.	Various	Various Land Surveying projects throughout the District.
2.	Cook/DuPage	Phase I services for Elgin O'Hare Expressway (Eastern Extension)/West O'Hare Bypass, Environmental Impact Statement.
3.	Cook/DuPage	Project Oversight Manager for the Phase I Elgin O'Hare Expressway (Eastern Extension)/West O'Hare Bypass, Environmental Impact Statement.
<b><u>Region 2 /District 2</u></b>		
4.	Winnebago	Phase I for Location Design Report for the I-39, US 20 Interchange and the US 20, Harrison Avenue interchange located south of Rockford.
5.	Winnebago	Phase I/II services for interchange at US 20 and IL 2 near Rockford
6.	Winnebago	Phase III, construction inspection for I-39 over the Kishwaukee River.
7.	Whiteside	Phase I/II for proposed replacement of structure on IL 40 over Rock River between Sterling and Rockford Falls.
8.	Whiteside, Rock Island & Henry	Phase I/II proposed structure replacement on IL 40, IL 84 and IL 92.
<b><u>Region 2 /District 3</u></b>		
9.	Various	Various Phase I/II services for structure projects throughout District.
10.	Bureau	Phase I/II services for the improvement of IL 26, from 0.1 mile south of Red Covered Bridge Rd. to I-80.
11.	Kankakee	Phase I services for I-57 interchange at 600 North Road and improvements from US 45/52 to IL 50 on 600 North Road.
12.	Various	Various Subsurface Utility Engineering (SUE) Projects throughout District Three.
13.	Kendall	Phase II services for Prairie Parkway from south of IL 71 to North of the BNSF Railroad.
14.	Kendall & Kane	Phase II services for Prairie Parkway from north of the BNSF Railroad to north of US 30.

<u>Item #</u>	<u>County</u>	<u>Description</u>
<b><u>Region 2 /District 3 Continued</u></b>		
15.	Various	Various Phase I/II services for structure projects throughout District.
16.	Various	Various Phase I/II services for structure projects throughout District.
17.	Various	Various Phase I/II services for structure projects throughout District.
<b><u>Region 3/District 4</u></b>		
18.	Various	Various Bridge Deck Delamination Surveys throughout the District
<b><u>Region 4/District 6</u></b>		
19.	Logan	Phase II services for Business Loop 55 Structure over Salt Creek, just south of Lincoln.
20.	Cass & Schuyler	Context Sensitive Solutions report for US 67 from southeast of the proposed IL 125 interchange to NW of the proposed IL 100/103 interchange.
21.	Various	Various Land Surveying projects throughout the District.
22.	Various	Various Phase I/II projects throughout the District.
23.	Various	Various Phase I/II projects throughout the District.
<b><u>Region 4/District 7</u></b>		
24.	Various	US 51 Expressway Corridor Study from Pana to Centralia
25.	Various	Various Phase I/II projects throughout the District.

1. **Job No. D-91-449-06; Various Routes, Various Land Surveys, Various Counties, Region One/District One.**

This project will utilize the **Direct Labor Multiple (DLM)** method of contracting.

The **Complexity Factor** for this project is **0**.

The Consultant who is selected for this project and all subconsultants the prime Consultant will be using are scheduled to attend an initial meeting on **October 6, 2006**, at **10:30 A.M.** at the Region One/District One Office in **Schaumburg**.

Phase II engineering services are required for land surveying projects under a blanket agreement. Work orders under the blanket agreement will be negotiated and authorized by the department on an as-needed basis. All work for this project may be in either English or metric units.

The department will furnish the Consultant with alignment data, title reports, existing right-of-way plats and proposed right-of-way requirements as each work order is negotiated.

The estimated construction cost of these projects may range from \$200,000 to \$1,000,000. The Consultant's work includes field and office resources to prepare statutory plats of highway, legal descriptions and field staking of same. Some GIS and database work might also be required. They must also have a QA/QC plan to review internal work as well as assigned IDOT projects.

The completion date for this contract will be 24 months after authorization to proceed.

Key personnel listed on **Exhibit A** for this project must include:

- The person who will assume the duties of all aspects of the work documents (must be an Illinois Licensed Professional Land Surveyor).
- The person who will perform the QC/QA review work of all milestone submittal documents (must be an Illinois Licensed Professional Engineer and/or an Illinois Licensed Professional Land Surveyor)

Firms must be prequalified in the **Special Services (Land Surveys)** category to be considered for this project.

Statements of Interest, including resumes of the key people noted above, must be submitted electronically to the Central Bureau of Design and Environment at the following address: [SOIPTB@dot.il.gov](mailto:SOIPTB@dot.il.gov).

2. **Job No. P91-443-06, Elgin O'Hare Expressway (Eastern Extension)/West O'Hare Bypass Tier One Environmental Impact Statement (EIS) Cook and DuPage Counties, Region One/District One.**

This project contains federal funds.

This project will utilize the **Cost Plus Fixed Fee** method of contracting.

**This project requires 10% DBE participation.**

The **Complexity Factor** for this project is **0.07**.

The Consultant who is selected for this project and all subconsultants the prime Consultant will be using are scheduled to attend an initial meeting on **October 5, 2006, at 10:30 A.M.** at the Region One/District One Office in **Schaumburg**.

Consultants submitting on this project may be required to make oral presentations.

Phase I engineering services are required for the preparation of an anticipated Tier One Environmental Impact Statement (EIS) and supporting engineering reports for the Elgin-O'Hare Expressway eastern extension/West O'Hare Bypass. The Phase I planning process may be continued into Tier Two. This will be assessed at the end of Tier One. The project may include determining a preferred corridor(s) and a set of potentially multi-modal transportation improvements at a conceptual level of detail. Key planning tools may include: a public involvement program based upon the principles of Context Sensitive Solutions, and an alternatives development and evaluation process that utilizes a travel demand model and a Geographic Information System (GIS) database. All work for this project will be in English units.

Firms and their subconsultants contracted to perform Phase I engineering services outlined in this advertisement shall not be eligible to also perform Phase I engineering oversight services as a prime or subconsultant for the Elgin O'Hare Expressway eastern extension/West O'Hare Bypass Tier One EIS Project.

The department will furnish the Consultant with available microfilm plans; existing and projected traffic data; aerial photography; available existing ground survey; accident data; utility coordination and correspondence; right-of-way data, as available; archaeological, historical, biological survey and hazardous waste coordination.

The estimated construction cost for this project is \$2,200,000,000. This work must be completed within 36 months after authorization to proceed.

Key personnel listed on **Exhibits A and B** for this project must include:

- The person who will assume the duties of Project Manager for all aspects of the work documents (must be an Illinois Licensed Professional Engineer).
- The person who will perform the duties of Project Engineer, that individual in charge who is directly involved in the development of the contract documents (must be an Illinois Licensed Professional Engineer).



- The person who will perform/supervise the work in the area of drainage calculations and preparation of the Drainage Report (must be an Illinois Licensed Professional Engineer).
- The person who will perform the QC/QA review work of all milestone submittal documents (must be an Illinois Licensed Professional Engineer for roadway work and must be an Illinois Licensed Structural Engineer for structural work with adequate plan review experience).
- Person who will be responsible for preparing structural concepts. The person must be an Illinois licensed Structural Engineer.
- The Environmental Lead, who will be responsible for the day-to-day management of the environmental work effort, and persons responsible for all environmental disciplines including water quality, noise, socio-economics and ecology. Environmental staffing on **Exhibit B** must match the staffing presented in the firm's most recent Statement of Experience and Financial Condition.
- The person, who will perform the work in the area of Special Transportation Studies (Mass Transit) (must be an Illinois Licensed Professional Engineer). In addition the staff performing this work must be identified.
- The person, who will perform the work in the area of Special Transportation Studies (Railway Engineering) (must be an Illinois Licensed Professional Engineer). In addition the staff performing this work must be identified.

Statements of Interest must also provide the approach the firm would take on this project, managing experience, etc.

Firms must be prequalified in the following categories to be considered for this project:

**Location/Design Studies (New Construction/Major Reconstruction)**  
**Environmental Reports (Environmental Impact Statements)**

Statements of Interest, including resumes of the key people noted above, must be submitted electronically to the Central Bureau of Design and Environment at the following address: [SOIPTB@dot.il.gov](mailto:SOIPTB@dot.il.gov).

3. **Job No. P91-442-06, Elgin O'Hare Expressway (Eastern Extension)/West O'Hare Bypass Phase I Consultant Oversight, Cook and DuPage Counties, Region One/District One.**

This project contains federal funds

This project will utilize the **Cost Plus Fixed Fee** method of contracting.

The **Complexity Factor** for this project is **0.035**.

The Consultant who is selected for this project and all subconsultants the prime Consultant will be using are is scheduled to attend an initial meeting on **October 5, 2006** at **9:00 A.M.** at the Region One/District One Office in **Schaumburg**.

A Project Manager (PM) Consultant is required to perform various Phase I engineering services for the management of the Elgin-O'Hare Expressway eastern extension/West O'Hare Bypass Tier One Environmental Impact Statement (EIS) under contract with other Consultant engineering firm(s). The PM will be expected to perform work similar to an IDOT Project Manager and Staff. Key staff from the PM Consultant may be expected to work in the District Office several days a week. Work orders under the blanket agreement will be negotiated and authorized by the department on an as-needed basis. All work for this project will be in English units.

Firms and their subconsultants contracted to perform Phase I Consultant oversight services outlined in this advertisement shall not be eligible to also perform Phase I functions either as a prime or subconsultant for the Elgin O'Hare Expressway eastern extension/West O'Hare Bypass Tier One EIS Project.

Joint Ventures will not be allowed on this project.

The Consultant's work may include:

- Manage the Elgin O'Hare Expressway eastern extension/West O'Hare Bypass Phase I consultant(s), including reviews and contract administration;
- Manage and track project-level cost, schedule and budget requirements, and coordination with program-level and assigned project-level controls personnel;
- Coordinate, validate, and monitor project scope;
- Identify and implement all necessary coordination and communication within and outside the Department; to IDOT and stakeholders as required;
- Hold regular progress meetings and briefings for IDOT including FHWA where details of project and progress are presented;
- Facilitate and expedite the resolution of technical issues, drawing upon necessary resources and experts in applicable disciplines;
- Facilitate the resolution of contractual issues, drawing upon necessary resources within IDOT;
- All other work as necessary and required to oversee the Elgin-O'Hare Expressway eastern extension/West O'Hare Bypass Project for the Department.

The department will provide applicable department policies and procedures to the PM Consultant.

The estimated construction cost for this project is \$2,200,000,000. This work must be completed within 36 months.

Key personnel listed on **Exhibit A** and **B** for this project must include:

- The person who will assume the duties of Project Manager for all aspects of the work documents (must be an Illinois Licensed Professional Engineer).
- The person who will perform the duties of Project Engineer, that individual in charge who is directly involved in the development of the contract documents (must be an Illinois Licensed Professional Engineer).
- The person who will assume the duties of managing the day to day environmental work effort and the person(s) responsible for managing the environmental disciplines including water quality, traffic noise, socio-economics and ecology. Environmental staffing on **Exhibit B** must match the staffing presented in the firm's most recent Statement of Experience and Financial Condition.

Statements of Interest must also provide a proposed organizational chart for the proposed PM Consultant team, as appropriate, with proposed percentage of time commitment, as well as the approach the firm would take on this project, and a summary of the pertinent experience of the firm managing Phase I highway projects.

Firms must be prequalified in the following categories to be considered for this project:

**Location/Design Studies (New Construction/Major Reconstruction)**  
**Environmental Reports (Environmental Assessment)**

Statements of Interest, including resumes of the key people noted above, must be submitted electronically to the Central Bureau of Design and Environment at the following address: [SOIPTB@dot.il.gov](mailto:SOIPTB@dot.il.gov).

4. **Job No. P-92-111-06, FAI 39 (I-39) & FAP 301 (US 20), Phase I services for the Reconstruction/Major Rehabilitation of the I-39 / US 20 and the US 20 / Harrison Ave. Interchanges, Southeast of Rockford. Winnebago County, Region Two/District Two**

This project will utilize the **Cost Plus Fixed Fee (CPFF)** method of contracting.

**This project requires 12.00% DBE participation.**

The **Complexity Factor** for this project is **0.035**.

The Consultant who is selected for this project and all subconsultants the prime Consultant will be using are scheduled to attend a negotiation meeting on **October 5, 2006 at 10:00 A.M.** at the Region Two/District Two Office in **Dixon**.

Phase I Engineering services are required for the preparation of a Location/Design Report for the reconstruction of the I-39 and US 20 interchange and the US 20 and Harrison Ave. Interchange located southeast of Rockford. The existing interchanges will be redesigned to better accommodate the existing traffic flow. It is anticipated that an Interchange Type Study may be completed to determine the most feasible and economical interchange at this location. Also, two additional roadway lanes are expected to be added on US 20 from the I-39 Interchange to I-90 Interchange within the existing US 20 median. It is anticipated that this project will be a Categorical Exclusion. All work for this project will be in English units.

The scope will include preparation of two Interchange Design Studies; type, size and location drawings for an anticipated five new structures; preparation of TS&L drawings detailing required modifications to existing structures; location drainage studies; local agency coordination and public involvement activities. The scope of the project may include preparation of Bridge Condition Reports, Location/Design Report, traffic management analysis, cost estimate, cross sections, type, size and locations drawings, Interchange Design Study, and field survey as necessary.

The following structures are expected to be included in this project:

- S.N. 101-0067 – I-39 (EB) over CC&P Railroad
- S.N. 101-0068 – I-39 (WB) over CC&P Railroad
- S.N. 101-0069 – I-39 (WB) over C&NW Railroad
- S.N. 101-0070 – I-39 (EB) over C&NW Railroad
- S.N. 101-0071 – I-39 over Harrison Ave (EB)
- S.N. 101-0072 – I-39 over Harrison Ave (WB)
- S.N. 101-0131 – Mulford Rd. over I-39
- S.N. 101-0135 – I-39 over US 20
- S.N. 101-0136 – US 20 WB to I-39 Ramp over US 20
- S.N. 101-0137 – US 20 EB to I-39 Ramp over Linden Rd
- S.N. 101-0138 – I-39 NB over Linden Rd.
- S.N. 101-0139 – I-39 US 20 WB to I-39 SB Ramp over Linden Rd.
- S.N. 101-0140 – I-39 NB to US 20 EB Ramp over Linden Rd.
- S.N. 101-0141 – I-39 NB over US 20 to I-39 SB Ramp
- S.N. 101-2075 – Culvert over Madigan Greek

We anticipate the following new structures to be added to the project:

- S.N. 101-0000 – EB US 20 over SB I-39 Ramp
- S.N. 101-0000 – WB US 20 over SB I-39 Ramp
- S.N. 101-0000 – I-39 to WB US 20 over SB I-39 Ramp
- S.N. 101-0000 – Linden Rd. over SB I-39 Ramp
- S.N. 101-0000 – NB I-39 to EB US 20 over Linden Rd.

The department will furnish the Consultant with any available as-built/existing plans; microfilm plans; aerial survey and existing survey data; existing and right-of-way plats; traffic data, accident information, soils boring data, and any other available information.

The estimated construction cost for this project is \$37,500,000. The completion date for this contract will be 18 months after authorization to proceed.

Key personnel listed on **Exhibits A and B** for this project must include:

- The person who will assume the duties of Project Manager for all aspects of the work documents (must be an Illinois Licensed Professional Engineer).
- The person who will perform the duties of Project Engineer, that individual in charge who is directly involved in the development of the contract documents (must be an Illinois Licensed Professional Engineer).
- The person who will perform/supervise the work in the area of drainage calculations and drainage plans (must be an Illinois Licensed Professional Engineer).
- The person who will be in charge of land surveys (must be an Illinois Licensed Professional Land Surveyor).
- The person who will perform the work in the area of structure plan preparation documents (must be an Illinois Licensed Structural Engineer). In addition the staff performing this work must be identified.
- The person who will perform the QC/QA review work for all milestone submittal documents (must be an Illinois Licensed Professional Engineer for roadway work and must be an Illinois Licensed Structural Engineer for structural work with adequate plan review experience).

Firms must be prequalified in the following category to be considered for this project:

**Location/Design Studies (Reconstruction/Major Rehabilitation)  
Structures (Highway: Advanced Typical)  
Special Services (Land Surveys)**

Statements of Interest, including resumes of the key people noted above, must be submitted electronically to the Central Bureau of Design and Environment at the following address:  
[SOIPTB@dot.il.gov](mailto:SOIPTB@dot.il.gov)

5. **Job No. P-92-007-06, FAP 301 (US 20 Bypass), Phase I/II services for the Reconstruction/Major Rehabilitation of the US 20/IL 2 Interchange near Rockford, Winnebago County, Region Two/District Two**

This project will utilize the **Cost Plus Fixed Fee (CPFF)** method of contracting.

**This project requires 12.00% DBE participation.**

The **Complexity Factor** for this project is **0**.

The Consultant who is selected for this project and all subconsultants the prime Consultant will be using are scheduled to attend a negotiation meeting on **October 10, 2006** at **10:00 A.M.** at the Region Two/District Two Office in **Dixon**.

Phase I and II engineering services are required for the preparation of a Location/Design Report and the contract plans for the redevelopment of a full access interchange at US 20 over IL 2 near Rockford. The existing profile of US Bypass 20 will be examined to correct a deficient vertical clearance and it is expected that the entire interchange will be required to be redesigned. It is anticipated that the proposed geometrics for the new interchange will be available for inclusion in the Location/Design Report by the department. Phase II engineering services will be required for the preparation of plans, special provisions, estimates, related documents and any other work necessary to complete the contract plans. It is anticipated that this project will be a Categorical Exclusion. All work for this project will be in English units.

The scope of the project is anticipated to include preparation of a Location/Design Report, traffic management analysis, cost estimate, cross sections, type, size and location drawings, accident analysis, contract plans including roadway plans, drainage analysis, and temporary traffic signal plans; special details; special provisions; quantities and cost estimates; and field survey as deemed necessary.

The following structures are anticipated to be included in this project:

- S.N. 101-0055 – E.B Lanes
- S.N. 101-0056 – W.B. Lanes

The department will furnish the Consultant with any available as-built/existing plans; microfilm plans; aerial survey; bridge condition reports, existing right-of-way plats; traffic data, accident information, soils boring data, and any other available information.

The estimated construction cost for these projects are \$11,000,000. The completion date for the Phase I contract will be 15 months after authorization to proceed. Phase II will be negotiated near the completion of Phase I. The completion date for Phase II work will be 12 months after authorization to proceed.

Key personnel listed on **Exhibit A** and **B** for this project must include:

- The person who will assume the duties of Project Manager for all aspects of the work documents (must be an Illinois Licensed Professional Engineer).

- The person who will perform the duties of Project Engineer, that individual in charge who is directly involved in the development of the contract documents (must be an Illinois Licensed Professional Engineer).
- The person who will perform the work in the area of structure plan preparation documents (must be an Illinois Licensed Structural Engineer). In addition the staff performing this work must be identified.
- The person who will be in charge of route surveys (must be an Illinois Licensed Professional Engineer or an Illinois Licensed Professional Land Surveyor).
- The person who will be in charge of land surveys (must be an Illinois Licensed Professional Surveyor).
- The person who will perform the QC/QA review of all milestone submittal documents (must be an Illinois Licensed Professional Engineer for roadway work and must be an Illinois Licensed Structural Engineer for structural work with adequate plan review experience).

Firms must be prequalified in the following category to be considered for this project:

**Highways (Roads & Streets)**  
**Location/Design Studies (Reconstruction/Major Rehabilitation)**  
**Structures (Highways: Typical)**

Statements of Interest, including resumes of the key people noted above, must be submitted electronically to the Central Bureau of Design and Environment at the following address:  
[SOIPTB@dot.il.gov](mailto:SOIPTB@dot.il.gov)

6. **Job No. C-92-092-06, FAI 39 (I-39), Construction Inspection for I-39 over Kishwaukee River, 0.8 miles south of Blackhawk Rd., Winnebago County, Region Two/District Two.**

This project will utilize the **Cost Plus Fixed Fee (CPFF)** method of contracting.

The **Complexity Factor** for this project is **0.07**.

The Consultant who is selected for this project and all subconsultants the prime Consultant will be using are scheduled to attend a negotiation meeting on **October 6, 2006** at **10:00 A.M.** at the Region Two/District Two Office in **Dixon**.

Phase III engineering service are required for proposed improvements to the existing twin structures carrying I-39 over the Kishwaukee River, approximately 0.8 miles south of Blackhawk Rd. The existing structures are 5-span precast, post-tensioned segmental concrete box girder bridges, which were originally constructed in 1980 using the balanced cantilever method. A study performed during Phase II engineering services determined the stress cracking observed in the bridge is causing continued deterioration. Contract documents were developed to strengthen the structures using external post-tensioning tendons internal to the box girders. A Fixed Anti-icing Spray Technology (FAST) system will also be installed on the structures and communicate with the existing Road Weather Information Systems (RWIS).

The proposed scope of the Phase III engineering services includes assisting the department in monitoring the Contractor's execution of the work detailed in the contract documents for the areas of the post-tensioning system and the FAST system. The services include the inspection of the installation and casting of the post-tensioning deviators and anchor blocks. The Consultant shall also witness the stressing of all post-tensioning tendons, record elongations and jack pressures, and verify that the installation and stressing meets the contract requirements. The services further include witnessing all tendon grouting activities and verifying that the Contractor follows specified grouting procedures. The Consultant shall be present during the testing and implementation of the FAST system and verify that it meets all system requirements.

The Consultant will provide sufficient staff to perform all of the engineering services required to complete the project. The project may include the inspection and documentation of pay quantities, on-site material testing and material quality assurance testing, construction staking and layout as required. The Consultant will be responsible for the completion of the work in accordance with the plans and specifications.

The Consultant will assist the Resident Engineer with all documentation of the project. This includes, but is not limited to, job diary, weekly reports, daily quantities, field books, calculations, and layout. The Consultant will be responsible for any vehicles, cell-phones, measuring devices, tools of the trade, computer, or any other items needed to complete the job.

The department will furnish the Consultant with a Resident Engineer for the project, all necessary plans, specifications, related forms for record keeping, and will do all off site material inspection for the project.

Quality Assurance (QA) oversight and Contractor's Quality Control (QC) by the same Consultant or one of their subconsultants on the same project or on material coming in from the same plant are prohibited.



The estimated construction cost for this project is \$6,000,000. This project is scheduled for construction during calendar years of late 2006 and 2007. The Consultant will be required to complete and submit final measurements, calculations and contract record documents to the department no later than six (6) weeks after the completion of the project. The completion date for this contract will be 24 months after authorization to proceed.

The following structures are anticipated to be included in this project:

- 101-0133 – I-39 over Kishwaukee River – Southbound
- 101-0134 – I-39 over Kishwaukee River – Northbound

Key personnel listed on **Exhibit A** for this project must include:

- The person who will assume the duties of Project Manager for all aspects of the work (must be an Illinois Licensed Professional Engineer and shall have at least 5 years of segmental bridge design and construction experience).
- The person who will assume the duties of inspecting the post-tensioning system must have at least 5 years of segmental bridge design and construction experience.
- The person who will assume the duties of inspecting the grouting operation of the post-tensioning system must have at least 5 years of segmental bridge design and construction experience and an ASBI Certified Grouting Technician.
- The person who will assume the duties of inspecting the FAST system shall have at least 3 years of experience in testing and implementation of ITS systems that include communications.
- The Liaison Engineer.
- The Materials Coordinator.
- The Document Technician. (The person actively performing the documentation on the project must possess a current IDOT Construction Documentation certificate. **Include the Documentation Certificate Number for IDOT class S-14, Documentation of Contract Quantities.**)
- The Materials QA Technician.
- The Survey Chief.

Firms must be prequalified in the following categories to be considered for this project:

**Special Services (Construction Inspection)  
Highway Structures (Major Bridges: Segmental Box Girder)**

Statements of Interest, including resumes of the key people noted above, must be submitted electronically to the Central Bureau of Design and Environment at the following address:  
[SOIPTB@dot.il.gov](mailto:SOIPTB@dot.il.gov)

7. **Job No. P-92-145-05 & D-92-145-05, FAP 646 (IL 40), Over Rock River, between Sterling and Rock Falls, Phase I/II for Structure Replacement, Whiteside County, Region Two/District Two**

This project will utilize the **Cost Plus Fixed Fee (CPFF)** method of contracting.

**This project requires 12.00% DBE participation.**

The **Complexity Factor** for this project is **0.035**.

The Consultant who is selected for this project and all subconsultants the prime Consultant will be using are scheduled to attend a negotiation meeting on **October 6, 2006** at **10:00 A.M.** at the Region Two/District Two Office in **Dixon**.

Phase I and II engineering services are required for the preparation of a Location/Design Report and final contract plans for the complete removal and replacement of the structure that carries IL 40 over the Rock River located between Sterling and Rock Falls. This bridge has buildings located directly adjacent to it at both ends of the structure. It is anticipated that Geotechnical work may require the use of a barge and/or other means necessary to obtain structure boring information. A public meeting is anticipated to discuss related to traffic flow and impacts during construction. It is also anticipated that this project will be a Categorical Exclusion. All work for this project will be in English units.

The scope of the project is anticipated to include preparation of Location/Design Report, traffic management analysis, cost estimate, cross sections, type, size and location drawings (TSL), contract plans including roadway, drainage, and traffic signal plans; drainage system design; special details; special provisions; quantities and cost estimates; and field survey as necessary to complete the project.

The following structure is included in this project:

- S.N. 098-0014 – IL 40 over Rock River,

The department will furnish the Consultant with any available as-built/existing plans; microfilm plans; aerial survey; bridge condition reports, accident statistics, existing right-of-way plans; traffic data, soils boring data, and any other available information.

The estimated construction cost for this project is \$25,000,000. The completion date for Phase I will be 18 months after authorization to proceed. Phase II will be negotiated near the completion of Phase I. The completion date for Phase II work will be 12 months after authorization to proceed.

Key personnel listed on **Exhibit A** and **B** for this project must include:

- The person who will assume the duties of Project Manager for all aspects of the work documents (must be an Illinois Licensed Professional Engineer).
- The person who will perform the duties of Project Engineer, that individual in charge who is directly involved in the development of the contract documents (must be an Illinois Licensed Professional Engineer).

- The person who will perform the work in the area of structure plan preparation documents (must be an Illinois Licensed Structural Engineer). In addition the staff performing this work must be identified.
- The person who will be in charge of land surveys (must be an Illinois Licensed Professional Land Surveyor).
- The person who will be in charge of route surveys (must be an Illinois Licensed Professional Engineer or an Illinois Licensed Professional Land Surveyor).
- The person who will be in charge of the Geotechnical work (must be an Illinois Licensed Professional Engineer or a Structural Engineer with demonstrated experience in geotechnical engineering).
- The person who will perform the QC/QA review work for all milestone submittal documents (must be an Illinois Licensed Professional Engineer for roadway work and must be an Illinois Licensed Structural Engineer for structural work with adequate plan review experience).

Firms must be prequalified in the following category to be considered for this project:

**Highways (Roads & Streets)**  
**Location/Design Studies (Reconstruction/Major Rehabilitation)**  
**Structures (Highway: Typical)**

Statements of Interest, including resumes of the key people noted above, must be submitted electronically to the Central Bureau of Design and Environment at the following address:  
[SOIPTB@dot.il.gov](mailto:SOIPTB@dot.il.gov)

8. **Job No. P-92-045-06, P-92-076-03 and P-92-049-06, FAP 646 (IL 40), FAP 308 (IL 84) and FAP 585 (IL 92), Phase I/II Engineering Services for Structure Replacements, Whiteside, Rock Island and Henry Counties, Region Two/District Two**

This project will utilize the **Cost Plus Fixed Fee (CPFF)** method of contracting.

The **Complexity Factor** for this project is **0**.

The Consultant who is selected for this project and all subconsultants the prime Consultant will be using are scheduled to attend a negotiation meeting on **October 11, 2006, at 10:00 A.M.** at the Region Two/District Two Office in **Dixon**.

Phase I and II engineering services are required for the preparation of an anticipated three Location/Design Reports and final contract plans for the complete removal and replacement of approximately four structures. The first report is for the removal and replacement of a structure that carries IL 40 over the Hennepin canal feeder, 0.5 miles south of US 30. The second report is for the removal and replacement of a structure that carries IL 84 over a ditch at the south edge of Cordova. The third report is for the removal and replacement of a structure that carries IL 92 over Main Union Special Ditch, 0.9 miles west of IL 78 and the removal and replacement of a culvert that carries IL 92 over a ditch, 0.3 miles west of Countryman Rd. It is anticipated that these projects will be a Categorical Exclusions. All work for this project will be in English units.

The scope of these projects may include but is not limited to: preparation of Location/Design Report, traffic management analysis, cost estimate, cross sections, accident analysis, type, size and location drawings, contract plans including roadway, drainage, and traffic signal plans; drainage system design; special details; special provisions; quantities and cost estimates; and field surveys as needed.

The following structures are anticipated to be included in this project:

- S.N. 098-0015 – IL 40 over Hennepin Canal Feeder
- S.N. 081-2001 – IL 84 over a Drainage Ditch
- S.N. 037-0069 – IL 92 over Main Union Special Ditch
- S.N. 037-1096 – IL 92 over a Ditch

The department will furnish the Consultant with any available as-built/existing plans; microfilm plans; aerial survey; bridge condition reports, accident statistics, existing right-of-way plats; traffic data, soils boring data, and any other available information.

The estimated construction cost for this project is \$2,475,000. The completion date for Phase I will be 15 months after authorization to proceed. Phase II will be negotiated near the completion of Phase I. The completion date for Phase II work will be 12 months after authorization to proceed.

Key personnel listed on **Exhibit A** for this project must include:

- The person who will assume the duties of Project Manager for all aspects of the work documents (must be an Illinois Licensed Professional Engineer).

- The person who will perform the duties of Project Engineer, that individual in charge who is directly involved in the development of the contract documents (must be an Illinois Licensed Professional Engineer).
- The person who will perform the work in the area of structure plan preparation documents (must be an Illinois Licensed Structural Engineer). In addition the staff performing this work must be identified.
- The person who will be in charge of land surveys (must be an Illinois Licensed Professional Land Surveyor).
- The person who will be in charge of route surveys (must be an Illinois Licensed Professional Engineer or an Illinois Licensed Professional Land Surveyor).
- The person who will perform the QC/QA review work for all milestone submittal documents (must be an Illinois Licensed Professional Engineer for roadway work and must be an Illinois Licensed Structural Engineer for structural work with adequate plan review experience).

Firms must be prequalified in the following category to be considered for this project:

**Highways (Roads & Streets)**  
**Location/Design Studies (Rehabilitation)**  
**Structures (Highway: Typical)**

Statements of Interest, including resumes of the key people noted above, must be submitted electronically to the Central Bureau of Design and Environment at the following address:  
[SOIPTB@dot.il.gov](mailto:SOIPTB@dot.il.gov)

9. **Job No. P-93-035-06, Phase I/II Various Structure Projects, Various Routes, Various Counties, Region Two/District Three.**

This project will utilize the **Direct Labor Multiple (DLM)** method of payment.

The **Complexity Factor** for this project is **0**.

The Consultant who is selected for this project and all subconsultants the prime Consultant will be using are scheduled to attend a negotiation meeting on **October 5, 2006** at **10:00 A.M.** at the Region Two/District Three Office in **Ottawa**.

Phase I and/or Phase II engineering services are required for Bridge Condition Reports, field surveys (including route and hydraulic stream surveys), Hydraulic Reports and, if needed, Type, Size and Location drawings, structure repair plans and structure borings for various structures throughout District 3. Work orders under the blanket agreement will be negotiated and authorized on an as-needed basis. Work for this project will be in English units.

The scope of work is anticipated to include data collection (may include ground penetration radar and/or infrared bridge deck delamination surveys and deck cores), ground and stream surveys, cost comparisons, traffic analyses and all work necessary to complete the Bridge Condition Reports, Hydraulic Reports and, if needed, type, size and location (TS&L) drawings, structure repair plans and structure borings.

The department will furnish the Consultant with traffic data, existing bridge rating information, unit prices for cost comparisons and available microfilm prints of as-built plans.

The completion date for this contract will be 24 months after authorization to proceed. The agreement with the Consultant will include an option for renewal by the department for an additional 24 months.

Key personnel listed on **Exhibit A** for this project must include:

- The person who will assume the duties of Project Manager for all aspects of the work documents (must be an Illinois Licensed Professional Engineer).
- The person who will assume the duties of Project Engineer, that individual-in-charge who is directly involved in the development of the contract documents (must be an Illinois Licensed Professional Engineer).
- The person who will perform the work in the area of structure plan preparation documents (must be an Illinois Licensed Structural Engineer). In addition, the staff performing this work must be identified.
- The person(s) who will perform the QC/QA review work of all milestone submittals (must have adequate plan review experience and be an Illinois Licensed Professional Engineer for roadway work and an Illinois Licensed Structural Engineer for structure work).

Firms must be prequalified in the following categories to be considered for this project:

**Location/Design Studies (Rehabilitation)**  
**Structures (Highway: Typical)**  
**Special Studies (Location Drainage)**

Statements of Interest, including resumes of the key people noted above, must be submitted electronically to the Central Bureau of Design and Environment at the following address:  
[SOIPTB@dot.il.gov](mailto:SOIPTB@dot.il.gov)

10. **Job No. P-93-033-06, FAP 316 (IL 26), From 0.1 Mile South of Red Covered Bridge Road to I-80, Bureau County, Region Two/District Three.**

This project will utilize the **Cost Plus Fixed Fee (CPFF)** method of contracting.

**This project requires 8.00% DBE participation.**

The **Complexity Factor** for this project is **0**.

The Consultant who is selected for this project and all subconsultants the prime Consultant will be using are scheduled to attend a negotiation meeting on **October 5, 2006 at 2:00 P.M.** at the Region Two/District Three Office in **Ottawa**.

Phase I and II engineering services are required. Phase I includes the engineering services for the preparation of a Project Report (anticipated to be a categorical exclusion) for the improvement of IL 26 from approximately 0.1 mile south of the Red Covered Bridge Road to I-80. All work for this project will be in English units.

The anticipated scope of work is pavement rehabilitation and/or reconstruction of the roadway to provide one travel lane in each direction throughout the entire length of the project with required turn lanes. An urban cross section shall be pursued requiring storm water collection and management evaluation. Possible replacement of multiple cell box culverts north of I-80 is also anticipated.

The Consultant's Phase I work includes data collection (including traffic counts); ground survey; accident analysis; intersection design studies; traffic analysis; drainage studies, cost estimates, environmental studies, minor right of way work and all other work necessary to complete the Project Report.

The department will furnish the Consultant with available construction plans, microfilm plans, field notes, traffic data, accident statistics, agency coordination, existing right-of-way plans, aerial photography, boring logs and other information.

The estimated construction cost for the project is \$4,730,000. The completion date for this contract will be 18 months after authorization to proceed. Phase II will be negotiated near the completion of Phase I. The completion date for Phase II will be 12 months after authorization to proceed.

Key personnel listed on **Exhibit A** for this project must include:

- The person who will assume the duties of Project Manager for all aspects of the work documents (must be an Illinois Licensed Professional Engineer).
- The person who will assume the duties of Project Engineer, that individual-in-charge who is directly involved in the development of the contract documents and will be responsible for all geometric studies and report preparation (must be an Illinois Licensed Professional Engineer).
- The drainage engineer, who will be responsible for all drainage work and investigations (must be an Illinois Licensed Professional Engineer).



- The person who will perform the work in the area of structure plan preparation documents (must be an Illinois Licensed Structural Engineer).
- The person(s) who will perform the QC/QA review work of all milestone submittals (must have adequate plan review experience and be an Illinois Licensed Professional Engineer for roadway work and an Illinois Licensed Structural Engineer for structure work).

Firms must be prequalified in the following categories to be considered for this project:

**Location/Design Studies (Rehabilitation)**  
**Structures (Highway: Simple)**  
**Special Studies (Location Drainage)**  
**Highways (Roads & Streets)**

Statements of Interest, including resumes of the key people noted above, must be submitted electronically to the Central Bureau of Design and Environment at the following address: [SOIPTB@dot.il.gov](mailto:SOIPTB@dot.il.gov).

11. **Job No. P-93-036-06, FAI 57 (I-57) At 6000 North Road Over I-57 North of Bourbonnais, Kankakee County, Region Two/District Three.**

This project will utilize the **Cost Plus Fixed Fee (CPFF)** method of contracting.

**This project requires 10% DBE participation.**

The **Complexity Factor** for this project is **0.035**.

The Consultant who is selected for this project and all subconsultants the prime Consultant will be using are scheduled to attend a negotiation meeting on **October 6, 2006**, at **2:00 P.M.** at the Region Two/District Three Office in **Ottawa**.

Phase I engineering services are required for the preparation of a Combined Design Report and an Environmental Assessment (EA) for the development of a full access interchange at I-57 and 6000 North Rd. including required improvements from US 45/52 to IL 50 on 6000 North Rd. to accommodate the new interchange. The Consultant's work is expected to require investigation of several interchange concepts to determine the most feasible and economical interchange type. An "Access Justification Report" has been completed and FHWA concept approval has been received. The selected Consultant will be responsible for all coordination and documentation necessary to achieve full FHWA approval. All work for this project will be in English units.

The Consultant's work is anticipated to include basic data collection, field surveys, hydraulic analyses, preparation of Interchange and Intersection Design Studies, Structure Reports, preparation of type, size and location drawings (TSL's), noise and air quality analyses, cost estimates, traffic management analyses, and all other work necessary for the Combined Design and EA Reports.

Public involvement will include, but not be limited to, holding informational meetings and public hearings, preparation of exhibits for the meetings and hearings, and evaluation and incorporation of comments from the meetings into the project. The Consultant will also be required to coordinate and conduct meetings with a variety of groups designed to generate input from local representation regarding the concerns and needs of the region.

The Consultant will be provided copies of the existing road and bridge plans and the Access Justification Report.

The estimated construction cost for the project is \$45,000,000. The completion date for this contract will be 24 months after authorization to proceed.

Key personnel listed on **Exhibits A and B** for this project must include:

- The person who will assume the duties of the Project Manager for all aspects of the work (must be an Illinois Licensed Professional Engineer).
- The person who will perform the duties of Project Engineer, that individual in charge who is directly involved in the development of the contract documents and will be responsible for the geometric studies (must be an Illinois Licensed Professional Engineer).

- The person who will perform the work in the area of structure plan preparation documents (must be an Illinois Licensed Structural Engineer). In addition, the staff performing this work must be identified.
- The person(s) who will perform the QC/QA review work of all milestone submittals (must have adequate plan review experience and be an Illinois Licensed Professional Engineer for roadway work and an Illinois Licensed Structural Engineer for structure work).
- The Environmental Lead, who will be responsible for the day-to-day management of the environmental work effort, and persons responsible for all environmental disciplines including air quality, noise, water quality, socio-economics and the ecology areas. Environmental staffing on **Exhibit B** must match the staffing presented in the firm's most recent Statement of Experience and Financial Condition.

Firms must be prequalified in the following categories to be considered for this project:

**Structures (Highway: Typical)**  
**Location/Design Studies (New Construction/Major Reconstruction)**  
**Environmental Reports (Environmental Assessment)**

The prime Consultant must be prequalified in **Environmental Assessment** and must perform all of the environmental work using staff that has been presented in your most recently approved Statement of Experience and Financial Condition or your firm must use a single subconsulting firm that is prequalified in **Environmental Assessment** to perform all of the environment work. The subconsultant's staff must be the same as presented in their most recently approved Statement of Experience and Financial condition.

Statements of Interest, including resumes of the key people noted above, must be submitted electronically to the Central Bureau of Design and Environment at the following address:  
[SOIPTB@dot.il.gov](mailto:SOIPTB@dot.il.gov).

12. **Job No. D-93-043-06, FAP319 (Prairie Parkway), Subsurface Utility Engineering (SUE) & Utility Coordination, Various Counties, Region Two/District Three.**

This project contains federal funds.

This project will utilize the **Cost Plus Fixed Fee (CPFF)** method of contracting.

**This project requires 10% DBE participation.**

The **Complexity Factor** for this project is **0.07**.

The Consultant who is selected for this project and all subconsultants the prime Consultant will be using are scheduled to attend a negotiation meeting on **October 6, 2006** at **9:00 A.M.** at the Region Two/District Three Office in **Ottawa**.

Phase I, II, and/or III engineering services are required for subsurface utility engineering and utility coordination work for Prairie Parkway, a new four lane facility in District 3. Work orders under a blanket agreement will be negotiated and authorized by the department on an as needed basis. The Consultant shall respond within 24 hours to the District after receiving each work order assignment to discuss the scope of work, negotiate hours of work, equipment required and direct cost. After the department gives the Consultant authority to proceed, the Consultant shall commence work within 10 calendar days. All work for this project will be done in English units.

The subsurface utility engineering consists of providing the District with existing utility location information in written documents and electronic CADD files for the various projects assigned. This information shall be obtained by researching all utility company's records which have facilities in the area, and by performing actual field surveys to verify and map at the appropriate quality level all existing utilities on the assigned project. Field surveys are to be performed to horizontally located above ground utility features including but not limited to poles, manholes, valve boxes, meters, utility designation markings, etc. The Consultant shall also determine the existence, and approximate horizontal position of underground utilities through the application of appropriate surface geophysical methods (QL B data). The exact horizontal and vertical locations of underground utilities shall also be determined by actually physically locating them (exposing and surveying) at designated spots with use of special boring/excavating equipment insured not to damage existing utilities (QL A data). Field information obtained and recorded in field books shall be drafted on plan sheets in electronic format using current MicroStation V8 and Geopak software utilized by the department.

The utility coordination services shall consist of coordination with the utility companies whose facilities are affected by the highway projects and may include, but not be limited to, the following:

- Review department's construction plans for areas of utility conflict where adjustments and/or relocations are needed.
- Provide a copy of department's construction plans to the utility companies accompanied with an information letter and coordinate with utility companies to assist in plan preparation. Plan submittals (preliminary, pre-final, final) to utility companies shall be sent at various phases of the project. All SUE data and test hole information sheets shall be included.

- Verify and record the horizontal location of each aerial and underground utility facility within the proposed construction limits. Also, verify and record the vertical location of each underground utility that may be in conflict with the proposed project and would require lowering or relocation due to the improvement.
- Schedule utility coordination meetings at various phases of the project to discuss utility relocation status to assure project is on schedule and utility relocation will be performed prior to roadway construction.
- Review plans and estimates furnished by the utility company for the most economical method of relocating the utilities. Ensure utility companies are relocating the facilities in accordance with the manual "Accommodation of Utilities on Right-of-Way of the Illinois State Highway System".
- If the utility adjustment is constructed on existing or proposed ROW, then a permit is required (IDOT writes the permit). The utility company is responsible for obtaining the permit from IDOT. The Consultant will be responsible for review of the proposed adjustment to insure the adjustment does not conflict with the department's proposed improvement or other proposed utility relocations.
- Provide to the District a completed "Status of Utilities to be Adjusted" sheet with the estimated dates of completion for each utility. This document is to be provided to the District a minimum of 14 days prior to the Plans, Special Provisions, & Estimates (PS & E) date for the letting for the improvement.
- Schedule and coordinate with utility companies for utility adjustments to be completed prior to the start of roadway construction.
- Attend field checks and preconstruction meetings for each section. Also, once the utility companies have received the plans and start submitting proposals, biweekly meetings may be required to discuss the job status.

The department will furnish the Consultant with any available as built plans and/or microfilm plans, any available survey field notes, alignment data, cross ties, design CADD files, or benchmarks.

The completion date for this contract will be 24 months after authorization to proceed. The agreement with the Consultant will include an option for renewal by the department for an additional 24 months.

Key personnel listed on **Exhibit A** for this project must include:

- The person who will assume the duties of Project Manager for all aspects of the work documents (must be experienced in managing multiple subsurface utility engineering projects in an urban environment and be an Illinois Licensed Professional Engineer).
- The person who will perform the duties of Project Engineer, that individual in charge who is directly involved in the development of the contract documents (must be an Illinois Licensed Professional Engineer).

- The person who will perform the work required for surveying (must be experienced in survey of utility features and be an Illinois Licensed Professional Land Surveyor).
- The person(s) who will perform the QC/QA review work of all milestone submittals (must be an Illinois Licensed Professional Engineer).

Statements of Interest must include satisfactory experience demonstrated in the activities required for this work by the firm and its' employees. The Statement of Interest must also include the following:

- The firm's ability to provide staff and equipment for simultaneous projects at different locations.
- A statement of the firm's ability to perform the work within the time frame described.
- A plan for developing a local office if the workload warrants.

Firms must be prequalified in the **Special Services (Subsurface Utility Engineering)** category to be considered for this project.

Statements of Interest, including resumes of the key people and experience data as noted above, must be submitted electronically to the Central Bureau of Design and Environment at the following address: [SOIPTB@dot.il.gov](mailto:SOIPTB@dot.il.gov).

13. **Job No. D-93-044-06, FAP 319 (Prairie Parkway) From South of IL 71 to North of the BNSF Railroad, Kendall County, Region Two/District Three.**

This project contains federal funds.

This project will utilize the **Cost Plus Fixed Fee (CPFF)** method of contracting.

**This project requires 20% DBE participation.**

The **Complexity Factor** for this project is **0.07**.

The Consultant who is selected for this project and all subconsultants the prime Consultant will be using are scheduled to attend a negotiation meeting on **October 5, 2006 at 9:00 A.M.** at the Region Two/District Three Office in **Ottawa**.

Phase II engineering services are required for the preparation of contract plans, specifications and estimates for the construction of approximately 6.6 miles of a new four lane divided highway, including an anticipated 14 structures and two interchanges. All work for this project will be in English units.

This section begins roughly 0.7 miles south of IL 71 and extends in a northerly direction to a point approximately 0.7 miles north of the BNSF Railroad (north of US 34).

The Consultant's work is anticipated to include preliminary and final roadway, structure, traffic signal, lighting, signing, landscaping, and drainage plans, as well as supplemental field surveys, special provisions and estimates and any other work necessary to complete the project.

The following structures are anticipated to be included in this project:

- Prairie Parkway over IL 71 – Interchange – dual structures
- Prairie Parkway over Illinois Railnet Railroad – dual structures
- Fox Rd. (CH 1) over Prairie Parkway
- Prairie Parkway over Fox River – dual structures
- River Rd. (1.1 miles south of US 34) over Prairie Parkway
- Prairie Parkway over Rob Roy Creek – box culvert
- Prairie Parkway over US 34 – Interchange – dual structures
- Prairie Parkway over BNSF Railroad/Faxon Road Extension – dual structures
- US 34 over Big Rock Creek

The department will furnish the Consultant with the design report, environmental impact statement, drainage report, hydraulic reports, type, size and location (TS&L) drawings, foundation borings, geotechnical reports, right of way plans, surveys, available as-built plans, microfilm plans, field notes, traffic data, agency coordination, aerial photography, and other available information.

The estimated construction cost for this project is \$130,000,000. The completion date for this contract will be 24 months after authorization to proceed.

Key personnel listed on **Exhibit A** and **B** for this project must include:

- The person who will assume the duties of Project Manager for all aspects of the work documents (must be an Illinois Licensed Professional Engineer).
- The person who will perform the duties of Project Engineer, that individual in charge who is directly involved in the development of the contract documents (must be an Illinois Licensed Professional Engineer).
- The person who will perform the work in the area of structure plan preparation documents (must be an Illinois Licensed Structural Engineer). In addition, the staff performing this work must be identified.
- The person who will perform/supervise the work in the area of hydraulic analysis and drainage design (must be an Illinois Licensed Professional Engineer).
- The person who will be in charge of route surveys (must be an Illinois Licensed Professional Engineer or an Illinois Licensed Professional Land Surveyor).
- The person who will perform the QC/QA review work of all milestone submittals (must have adequate plan review experience and be an Illinois Licensed Professional Engineer for roadway work and an Illinois Licensed Structural Engineer for structure work).

Statements of Interest must also include satisfactory experience demonstrated in the activities required for this work by the firm and its' employees.

Firms must be prequalified in the following categories to be considered for this project:

**Highways (Freeways)**  
**Structures (Major Bridges: Steel Girder)**  
**Structures (Highway: Advanced Typical)**

Statements of Interest, including resumes of the key people and experience data as noted above, must be submitted electronically to the Central Bureau of Design and Environment at the following address: [SOIPTB@dot.il.gov](mailto:SOIPTB@dot.il.gov).



14. **Job No. D-93-045-06, FAP 319 (Prairie Parkway), North of the BNSF Railroad to North of US 30, Kendall and Kane Counties, Region Two/District 3**

This project will utilize the **Cost Plus Fixed Fee (CPFF)** method of contracting.

**This project requires 20.00% DBE participation.**

The **Complexity Factor** for this project is **0.07**.

The Consultant who is selected for this project and all subconsultants the prime Consultant will be using are scheduled to attend a negotiation meeting on **October 5, 2006 at 1:00 P.M.** at the District Three Office in **Ottawa**.

Phase II engineering services are required for the preparation of contract plans, specifications and estimates for the construction of approximately 7.9 miles of a new four lane divided highway, including an expected 23 structures and one interchange. All work for this project will be in English units.

This section begins roughly 0.7 miles north of the BNSF Railroad and extends in a northerly direction to a point approximately 1.5 miles north of US 30.

The Consultant's work is anticipated to include preliminary and final roadway, structure, traffic signal, lighting, signing, landscaping, and drainage plans, as well as supplemental field surveys, special provisions and estimates and any other work necessary to complete the project.

The following structures are anticipated to be included in this project:

- Prairie Parkway over Big Rock Creek (south crossing) – dual structures
- Rock Creek Rd. (CH 13) over Prairie Parkway
- Prairie Parkway over stream, 450 feet south of Galena Rd. – dual structures
- Galena Road (CH 9) over Prairie Parkway
- Prairie Parkway over stream, 3500 feet north of Galena Rd. – dual structures
- Jericho Road (CH 24) over Prairie Parkway
- Prairie Parkway over Big Rock Creek (north crossing) – dual structures
- Granart Rd. (CH 35) over Prairie Parkway
- Prairie Parkway over stream, 600 feet south of BNSF Railroad – dual structures
- Prairie Parkway over BNSF Railroad – dual structures
- Prairie Parkway over US 30 – dual structures
- US 30 Connector Road over Prairie Parkway – interchange
- Prairie Parkway over stream, 3770 feet north of US 30 – dual structures
- US 30 over Welch Creek
- Dauberman Rd. (CH 62) over Welch Creek

The department will furnish the Consultant with the design report, environmental impact statement, drainage report, hydraulic reports, type, size and location (TS&L) drawings, foundation borings, geotechnical reports, right of way plans, surveys, any available as-built plans, microfilm plans, field notes, traffic data, agency coordination, aerial photography, and other available information.

The estimated construction cost for this project is \$140,000,000. The completion date for this contract will be 24 months after authorization to proceed.

Key personnel listed on **Exhibit A** for this project must include:

- The person who will assume the duties of Project Manager for all aspects of the work documents (must be an Illinois Licensed Professional Engineer).
- The person who will perform the duties of Project Engineer, that individual in charge who is directly involved in the development of the contract documents (must be an Illinois Licensed Professional Engineer).
- The person who will perform the work in the area of structure plan preparation documents (must be an Illinois Licensed Structural Engineer). In addition, the staff performing this work must be identified.
- The person who will perform/supervise the work in the area of hydraulic analysis and drainage design (must be an Illinois Licensed Professional Engineer).
- The person who will be in charge of route surveys (must be an Illinois Licensed Professional Engineer or an Illinois Licensed Professional Land Surveyor).
- The person who will perform the QC/QA review work of all milestone submittals (must have adequate plan review experience and be an Illinois Licensed Professional Engineer for roadway work and an Illinois Licensed Structural Engineer for structure work).

Statements of Interest must also include satisfactory experience demonstrated in the activities required for this work by the firm and its' employees.

Firms must be prequalified in the following categories to be considered for this project:

**Highways (Freeways)**  
**Structures (Highway: Advanced Typical)**

Statements of Interest, including resumes of the key people and experience data as noted above, must be submitted electronically to the Central Bureau of Design and Environment at the following address: [SOIPTB@dot.il.gov](mailto:SOIPTB@dot.il.gov).

15. **Job No. D-93-046-06, Phase I/II Various Structure Projects, Various Routes, Various Counties, Region Two/District Three.**

This project will utilize the **Direct Labor Multiple (DLM)** method of contracting.

The **Complexity Factor** for this project is **0**.

The Consultant who is selected for this project and all subconsultants the prime Consultant will be using are scheduled to attend a negotiation meeting on **October 5, 2006** at **2:00 P.M.** at the Region Two/District Three Office in **Ottawa**.

Phase I and II engineering services are anticipated for the preparation of contract plans, special provisions and estimates for structures throughout District Three. Work orders under the blanket agreement will be negotiated and authorized on an as needed basis. All work for this contract will be in English units.

Phase I and II engineering services are anticipated to include preparing Bridge Condition and Hydraulic Reports, conducting route surveys (including full hydraulic surveys), type, size and location (TS&L) drawings and bridge repair plans. The work required may also include performing drainage studies, preparing bridge & roadway plans, preparing traffic control plans, special provisions, cost estimates and any other work necessary to complete final contract plans and documents.

It is anticipated this contract will include approximately four projects with estimated construction costs ranging up to \$2,000,000. The engineering services required may consist of only a portion of the total engineering work on any certain project.

The department will furnish the Consultant with any available plans, approved Phase I reports, field notes, traffic data, accident statistics, agency coordination, existing right of way plans, aerial photographs, boring logs, existing Bridge Condition & Hydraulic Reports, structure ratings and other information.

The completion date for this contact will be 24 months after authorization to proceed. The agreement with the Consultant will include an option for renewal by the department for an additional 24 months.

Key personnel listed on **Exhibit A** for this project must include:

- The person who will assume the duties of Project Manager for all aspects of the work documents (must be an Illinois Licensed Professional Engineer).
- The person who will perform the duties of Project Engineer, that individual in charge who is directly involved in the development of contract documents (must be an Illinois Licensed professional Engineer).
- The person who will perform/supervise the work in the area of hydraulic analysis and the preparation of the Hydraulic Reports (must be an Illinois Licensed Professional Engineer).

- The person who will perform/supervise the work in the area of structure plan preparation (must be an Illinois Licensed Structural Engineer). In addition, the staff performing the work must be identified.
- The person who will perform the QC/QA review of all milestone submittals (must have adequate plan review experience and be an Illinois Licensed Professional Engineer for roadway work and an Illinois Licensed Structural Engineer for structure work).
- The person who will be in charge of route surveys (must be an Illinois Licensed Professional Engineer and/or an Illinois Licensed Professional Land Surveyor).

Firms must be prequalified in the following categories to be considered for this project:

**Highways (Roads & Streets)**  
**Structures (Highway: Typical)**

Statements of Interest, including resumes of the key people noted above, must be submitted electronically to the Central Bureau of Design and Environment at the following address:  
[SOIPTB@dot.il.gov](mailto:SOIPTB@dot.il.gov).

16. **Job No. D-93-047-06, Phase I/II Various Structure Projects, Various Routes, Various Counties, Region Two/District Three.**

This project will utilize the **Direct Labor Multiple (DLM)** method of contracting.

The **Complexity Factor** for this project is **0**.

The Consultant who is selected for this project and all subconsultants the prime Consultant will be using are scheduled to attend a negotiation meeting on **October 5, 2006** at **10:00 A.M.** at the Region Two/District Three Office in **Ottawa**.

Phase I and II engineering services are anticipated for the preparation of contract plans, special provisions and estimates for structures throughout District Three. Work orders under the blanket agreement will be negotiated and authorized on an as needed basis. All work for this project will be in English units.

Phase I and II engineering services are anticipated to include preparing Bridge Condition and Hydraulic Reports, conducting route surveys (including full hydraulic surveys), type, size and location (TS&L) drawings and bridge repair plans. The work required may also include performing drainage studies, preparing bridge & roadway plans, preparing traffic control plans, special provisions, cost estimates and any other work necessary to complete final contract plans and documents.

It is anticipated this contract will include approximately 4 different projects with estimated construction costs ranging up to \$3,500,000. The engineering services required may consist of only a portion of the total engineering work on any certain project.

The department will furnish the Consultant with any available plans, approved Phase I Reports, field notes, traffic data, accident statistics, agency coordination, existing right of way plans, aerial photographs, boring logs, existing Bridge Condition & Hydraulic Reports, structure ratings and other available information.

The completion date for this contract will be 24 months after authorization to proceed. The agreement with the Consultant will include an option for renewal by the department for an additional 24 months.

Key personnel listed on **Exhibit A** for this project must include:

- The person who will assume the duties of Project Manager for all aspects of the work documents (must be an Illinois Licensed Professional Engineer).
- The person who will perform the duties of Project Engineer, that individual in charge who is directly involved in the development of contract documents (must be an Illinois Licensed Professional Engineer).
- The person who will perform/supervise the work in the area of hydraulic analysis and the preparation of the Hydraulic Reports (must be an Illinois Licensed Professional Engineer).

- The person who will perform/supervise the work in the area of structure plan preparation (must be an Illinois Licensed Structural Engineer). In addition, the staff performing the work must be identified.
- The person who will perform the QC/QA review of all milestone submittal documents (must have adequate plan review experience and be an Illinois Licensed Professional Engineer for roadway work and an Illinois Licensed Structural Engineer for structure work).
- The person who will be in charge of route surveys (must be an Illinois Licensed Professional Engineer and/or an Illinois Licensed Professional Land Surveyor).

Firms must be prequalified in the following categories to be considered for this project:

**Highways (Roads & Streets)**  
**Structures (Highway: Typical)**

Statements of Interest, including resumes of the key people noted above, must be submitted electronically to the Central Bureau of Design and Environment at the following address: [SOIPTB@dot.il.gov](mailto:SOIPTB@dot.il.gov).

17. **Job No. D-93-048-06, Phase I/II Various Structure Projects, Various Routes, Various Counties, Region Two/District Three.**

This project will utilize the **Direct Labor Multiple (DLM)** method of contracting.

The **Complexity Factor** for this project is **0**.

The Consultant who is selected for this project and all subconsultants the prime Consultant will be using are scheduled to attend a negotiation meeting on **October 6, 2006** at **10:00 A.M.** at the Region Two/District Three Office in **Ottawa**.

Phase I and II engineering services are anticipated for the preparation of contract plans, special provisions and estimates for structures throughout District Three. Work orders under the blanket agreement will be negotiated and authorized on an as needed basis. All work for this contract will be in English units.

Phase I and II engineering services are anticipated to include preparing Bridge Condition and Hydraulic Reports, conducting route surveys (including full hydraulic surveys), type, size and location (TS&L) drawings and bridge repair plans. The work required may also include performing drainage studies, preparing bridge & roadway plans, preparing traffic control plans, special provisions, cost estimates and any other work necessary to complete final contract plans and documents.

It is anticipated this contract will include approximately 4 different projects with estimated construction costs ranging up to \$4,500,000. The engineering services required may consist of only a portion of the total engineering work on any certain project.

The department will furnish the Consultant with any available plans, approved Phase I Reports, field notes, traffic data, accident statistics, agency coordination, existing right of way plans, aerial photographs, boring logs, existing Bridge Condition & Hydraulic Reports, structure ratings and other available information.

The completion date for this contract will be 24 months after authorization to proceed. The agreement with the Consultant will include an option for renewal by the department for an additional 24 months.

Key personnel listed on **Exhibit A** for this project must include:

- The person who will assume the duties of Project Manager for all aspects of the work documents (must be an Illinois Licensed Professional Engineer).
- The person who will perform the duties of Project Engineer, that individual in charge who is directly involved in the development of contract documents (must be an Illinois Licensed Professional Engineer).
- The person who will perform/supervise the work in the area of hydraulic analysis and the preparation of the Hydraulic Reports (must be an Illinois Licensed Professional Engineer).

- The person who will perform/supervise the work in the area of structure plan preparation (must be an Illinois Licensed Structural Engineer). In addition, the staff performing the work must be identified.
- The person who will perform the QC/QA review of all milestone submittal documents (must have adequate plan review experience and be an Illinois Licensed Professional Engineer for roadway work and an Illinois Licensed Structural Engineer for structure work).
- The person who will be in charge of route surveys (must be an Illinois Licensed Professional Engineer and/or an Illinois Licensed Professional Land Surveyor).

Firms must be prequalified in the following categories to be considered for this project:

**Highways (Roads & Streets)**  
**Structures (Highway: Typical)**

Statements of Interest, including resumes of the key people noted above, must be submitted electronically to the Central Bureau of Design and Environment at the following address: [SOIPTB@dot.il.gov](mailto:SOIPTB@dot.il.gov).



18. **Job No. P-94-020-06, Bridge Deck Delamination Surveys on Various Routes in Various Counties in Region Three/District Four**

This project will utilize the **Direct Labor Multiple (DLM)** method of contracting.

The **Complexity Factor** for this project is **0**.

The Consultant selected for this project and all subconsultants the prime Consultant will be using are scheduled to attend a negotiation meeting on **October 5, 2006 at 10:00 A.M.** at the Region Three/District 4 office in **Peoria**.

Work orders under the blanket agreement will be negotiated and authorized by the department on an as-needed basis. All work for this project will be in English units. The Consultant is expected to perform, but is not limited to, the following tasks on various structures throughout District Four:

- Survey of bridge decks using a combination of soundings, infrared thermographic surveys, ground penetrating radar, visual inspections, limited deck coring, and other methods as approved by the Department to identify areas of delamination. Using these methods, partial and full depth repair areas will be located. Also, areas of debonding will be located.
- To calibrate and confirm the data gathered in testing, coring of selected areas of the bridge decks, visual inspections of the deck soffits and other approved techniques will be used. Additionally, the cores and other techniques will be used to identify the depths of the delaminations identified.
- Provide plan view sheets of surveyed bridge decks showing the deck, identified delaminations, and proposed repair areas marked in the appropriate scale, with a table showing the square feet of proposed partial and full-depth repairs, and the percentage of deck to be repaired.
- Prepare a report documenting the techniques and equipment used, as well as a summary of the survey results. Additionally, a summary of the quantities of delamination and debonding (square feet) and the percentage of the deck they represent will be provided. Pictures of any deck cores taken for the deck survey will also be provided in the report.
- Provide the appropriate amount of traffic control during field work.

The department will furnish the following to the Consultant:

- Location map and plan views of the bridge decks to be surveyed which give sufficient details.
- Provide one person to act as a liaison between the Consultant and the department, and to assist in data collection, as needed.
- Provide cleaning of deck surfaces, if needed.

The completion date for this contract will be 12 months after authorization to proceed. The agreement with the Consultant will have an option for renewal by the department for an additional 12 months.

Statements of Interest must include the following:

- Firm's experience with this type of work.
- Firm's techniques to be used to complete this work.
- **Exhibit A** must include
  - Name, e-mail address, and phone number of the firm's contact person
  - Names of key personnel, along with resumes indicating their qualifications.
  - A statement of the firm's ability to do the work in-house and a list of work that will need to be subcontracted, if necessary.
  - A statement of the firm's ability to perform the work within the time period described above.
- The firm's calculated burden and overhead rate.

The Statement of Interest must be received by the Bureau of Design and Environment and the Region Three/District Four Office prior to 4:30 p.m., central time, August 3, 2006 to be given consideration. Submittals may be e-mailed to [SOIPTB@dot.il.gov](mailto:SOIPTB@dot.il.gov) or send one copy to each of the following:

Illinois Department of Transportation  
Ms Cheryl Cathey  
Bureau of Design & Environment  
Attn: Consultant Unit (Room 330)  
2300 South Dirksen Parkway  
Springfield, IL 62764

Illinois Department of Transportation  
Mr. Joe Crowe  
Region Three/District Four  
401 Main Street  
Peoria, IL 61021

19. **Job No. D-96-521-03, FAU 7706 (BL-55), Phase II Engineering for Structure Replacement over Salt Creek, Logan County, Region Four/District Six.**

This project will utilize the **Cost Plus Fixed Fee (CPFF)** method of contracting.

**This project requires 15% DBE participation.**

The **Complexity Factor** for this project is **0**.

The Consultant who is selected for this project and all subconsultants the Prime Consultant will be using are scheduled to attend an initial Scope of Services meeting on **October 11, 2006**, at **1:30 P.M.** at the Region Four/District Six Office in **Springfield**.

Phase II engineering services are required for the preparation of contract plans, special provisions and estimates for the removal and replacement of the BL-55 structure over the Salt Creek, located 0.3 mi. south of Lincoln in Logan County. All work will be done in English units.

The following structure, S.N. 054-0005 over the Salt Creek, is included in this project.

The Consultant's work will consist of the preparation of contract plans, field surveys, preparation for right-of-way plats and plans, preparation of type, size, and location (TS&L) drawings, structure plans, roadway plans, traffic control plan, and any other related work to complete final plans, special provisions, and estimates.

The department will furnish the Consultant with any available existing plans, survey and field notes, traffic data, boring logs, approved Bridge Condition Report, and approved Hydraulic Report, approved Phase I Design Report, and other pertinent information to complete the assigned work.

The estimated construction cost for this project is \$7,300,000. The completion date for this contract will be 24 months after authorization to proceed.

Key personnel listed on **Exhibit A** for this project must include:

- The person who will assume the duties of Project Manager for all aspects of the work documents (must be an Illinois Licensed Professional Engineer).
- The person who will perform the duties of Project Engineer, that individual in charge who is directly involved in the development of the contract documents (must be an Illinois Licensed Professional Engineer).
- The person who will perform the work in the area of structure plan preparation documents (must be an Illinois Licensed Structural Engineer). In addition, the staff performing this work must be identified.
- The person who will perform the QC/QA review work for all milestone submittal documents (must be an Illinois Licensed Professional Engineer for roadway work and must be an Illinois Licensed Structural Engineer for structural work with adequate plan review experience).

Firms must be prequalified in the following categories to be considered for this project:

**Highways (Roads & Streets)**  
**Structures (Highway: Advanced Typical)**

Statements of Interest, including resumes of the key people noted above, must be submitted electronically to the Central Bureau of Design and Environment at the following address:  
[SOIPTB@dot.il.gov](mailto:SOIPTB@dot.il.gov).

20. **Job No. D-96-524-06, FAP 310 (US 67), from SE of the proposed IL 125 Interchange to NW of the proposed IL 100/IL 103 Interchange, Cass & Schuyler Counties, Region Four/District Six.**

This project will utilize the **Cost Plus Fixed Fee (CPFF)** method of contracting.

The **Complexity Factor** for this project is **0.035**.

The Consultant who is selected for this project and all subconsultants the prime Consultant will be using are scheduled to attend an initial meeting on **October 11, 2006 at 10:30 A.M.** at the Region Four/District Six Office in **Springfield**.

Phase II engineering services are required to complete the Context Sensitive Solution (CSS) Study and Report to guide to determine the type and style of the proposed bridge to carry the proposed four lanes of US 67 over the Illinois River and Curry Lake near Beardstown. This will also involve determining the proposed roadway, landscaping, and aesthetic features for the entire study area along the US 67 alignment from east of the proposed IL 125 Interchange to west of IL 100 / IL 103 Interchange for a total length of approximately 3.7 miles.

The following structure, SN 009-0001 (US 67 over the Illinois River and Curry Lake) is included in this project.

The department will furnish the Consultant with available field survey notes, as-built construction plans, existing right-of-way plans, soil boring logs, geotechnical report, and approved project reports.

The estimated construction cost for this project is \$150,000,000. The Consultant's work includes completing a CSS Study and Report. The completion date for this contract will be 24 months after authorization to proceed.

Key personnel listed on **Exhibit A** for this project must include:

- The person who will assume the duties of Project Manager for all aspects of the work documents (must be an Illinois Licensed Professional Engineer).
- The person who will perform the duties of Project Engineer, that individual in charge who is directly involved in the development of the contract documents (must be an Illinois Licensed Professional Engineer).
- The person who will perform the work in the area of structure plan preparation documents (must be an Illinois Licensed Structural Engineer). In addition, the staff performing this work must be identified.
- The person who will perform the QC/QA review work for all milestone submittal documents (must be an Illinois Licensed Professional Engineer for roadway work and must be an Illinois Licensed Structural Engineer for structural work with adequate plan review experience).
- The person who will perform the landscape architecture work.

- The person who will be in charge of Land surveys (must be an Illinois Licensed Professional Land Surveyor).

Firms must be prequalified in the following categories to be considered for this project:

**Highways (Freeways)**  
**Structures (Highway: Complex)**

Statements of Interest, including resumes of the key people noted above, must be submitted electronically to the Central Bureau of Design and Environment at the following address: [SOIPTB@dot.il.gov](mailto:SOIPTB@dot.il.gov).

21. **Job No. R-96-010-06, Various Surveys, Various Routes, Various Counties, Region Four/District 6**

This project will utilize the **Direct Labor Multiple (DLM)** method of contracting.

**This project requires 15% DBE participation.**

The **Complexity Factor** for this project is **0**.

The Consultant who is selected for this project and all subconsultants the prime Consultant will be using are scheduled to attend a negotiation meeting on **October 6, 2006** at **10:00 A.M.** in the Region Four/District 6 Office in **Springfield**.

Engineering services are required for miscellaneous survey projects throughout District 6. It is anticipated this contract will include approximately eight (8) such surveys during Fiscal Year 2007. Work orders under the blanket agreement will be negotiated and authorized by the department on an as needed basis. All work for this project will be in English units.

The department will furnish the Consultant with any available data.

The Consultant's work may include, but is not limited to, route and land surveys, plat preparations, and right-of-way plan preparation. The department will direct as to how the surveys and plats will be completed.

The completion date for this contract will be June 30, 2008.

Key personnel listed on **Exhibit A** for this project must include:

- The person who will assume the duties of the Project Manager for all aspects of the work documents (must be an Illinois Licensed Professional Land Surveyor)

Firms must be prequalified in the **Special Services (Land Surveying)** category to be considered for this project.

Statements of Interest, including resumes of the key people noted above must be submitted electronically to the Central Bureau of Design and Environment at the following address: [SOIPTB@dot.il.gov](mailto:SOIPTB@dot.il.gov).

22. **Job No. D-96-543-06; Phase I and/or II for Various Projects, Various Routes, Various Counties, in Region Four/District Six**

This project will utilize the **Direct Labor Multiple (DLM)** method of contracting.

**This project required 15.00% DBE participation.**

The **Complexity Factor** for this project is **0**.

The Consultant who is selected for this project and all subconsultants the prime Consultant will be using are scheduled to attend a Scope of Services meeting on **October 10, 2006, at 10:00 A.M.** at the Region Four/ District Six Office in **Springfield**.

Engineering services are required for Phase I and/or Phase II work on various projects in District Six. Work orders under the blanket agreement will be negotiated and authorized by the department on an as-needed basis. All work for this project may be in English or metric units.

The Phase I work, if required, may consist of conducting route surveys, hydraulic surveys, hydraulic analysis, geometric studies, preparing bridge condition reports, and preparing project reports (categorical exclusion projects only). This work will include data collection, development of alignment alternatives, cost estimates, traffic management analysis, accident analysis, bridge condition reports, TS&L, structure plans, and other related work and exhibits necessary to produce the Project Report, as necessary.

The Phase II work, if required, may consist of conducting route surveys, land surveys, hydraulic analysis, geometric studies, preparation of TS&L structure plans, roadway plans, necessary right-of-way documents, and any other related work to complete final plans, specifications, and estimates, as necessary.

The various proposed projects may consist of simple patching and resurfacing, bridge repair, bridge rehabilitation, bridge replacement, widening and resurfacing, and/or new roadway projects. The engineering services required may consist of only a portion of the total engineering work on a certain project.

The department will furnish the Consultant with any available as-built plans, microfilm plans, field notes, traffic data, accident statistics, agency coordination, existing right-of-way plans, aerial photos, boring logs, and other information.

It is anticipated that this contract will include approximately 3 to 15 different projects. The estimated construction costs of each project will range from \$100,000 to \$2,500,000. The completion date for this contract will be 36 months after authorization to proceed.

Key personnel listed on **Exhibit A** for this contract must include:

- The person who will assume the duties of Project Manager for all aspects of the work (must be an Illinois Licensed Professional Engineer).
- The person(s) who will perform the duties of Project Engineer who will be directly involved and responsible in the development of the reports and/or plans (must be an Illinois Licensed Professional Engineer).



- The person who will be in charge of route surveys (must be an Illinois Licensed Professional Engineer and/or an Illinois Licensed Professional Land Surveyor).
- The person who will be in charge of land surveys (must be an Illinois Licensed Professional Land Surveyor).
- The person who will perform the work in the area of structure plan preparation documents (must be an Illinois Licensed Structural Engineer). In addition, the staff performing this work must be identified.
- The person who will perform the QC/QA review work of all milestone submittal documents (must be an Illinois Licensed Professional Engineer for roadway work and must be an Illinois Licensed Structural Engineer for structural work with adequate plan review experience).

Firms must be prequalified in the following categories to be considered for this project:

**Highways (Roads & Streets)  
Structures (Highway: Typical)**

Statements of Interest, including resumes of the key people noted above must be submitted electronically to the Central Bureau of Design and Environment at the following address: [SOIPTB@dot.il.gov](mailto:SOIPTB@dot.il.gov).

23. **Job No. D-96-544-06; Phase I and/or II for Various Projects, Various Routes, Various Counties, in Region Four/District Six**

This project will utilize the **Direct Labor Multiple (DLM)** method of contracting.

**This project required 15.00% DBE participation.**

The **Complexity Factor** for this project is **0**.

The Consultant who is selected for this project and all subconsultants the prime Consultant will be using are scheduled to attend a Scope of Services meeting on **October 6, 2006 at 10:00 A.M.** at the Region Four/District Six Office in **Springfield**.

Engineering services are required for Phase I and/or Phase II work on various projects in District Six. Work orders under the blanket agreement will be negotiated and authorized by the department on an as-needed basis. All work for this project may be in English or metric units.

The Phase I work, if required, may consist of conducting route surveys, hydraulic surveys, hydraulic analysis, geometric studies, preparing bridge condition reports, and preparing project reports (categorical exclusion projects only). This work will include data collection, development of alignment alternatives, cost estimates, traffic management analysis, accident analysis, bridge condition reports, TS&L, structure plans, and other related work and exhibits necessary to produce the Project Report, as necessary.

The Phase II work, if required, may consist of conducting route surveys, land surveys, hydraulic analysis, geometric studies, preparation of TS&L structure plans, roadway plans, necessary right-of-way documents, and any other related work to complete final plans, specifications, and estimates, as necessary.

The various proposed projects may consist of simple patching and resurfacing, bridge repair, bridge rehabilitation, bridge replacement, widening and resurfacing, and/or new roadway projects. The engineering services required may consist of only a portion of the total engineering work on a certain project.

The department will furnish the Consultant with any available as-built plans, microfilm plans, field notes, traffic data, accident statistics, agency coordination, existing right-of-way plans, aerial photos, boring logs, and other information.

It is anticipated that this contract will include approximately 3 to 15 different projects. The estimated construction costs of each project will range from \$100,000 to \$2,500,000. The completion date for this contract will be 36 months after authorization to proceed.

Key personnel listed on **Exhibit A** for this contract must include:

- The person who will assume the duties of Project Manager for all aspects of the work (must be an Illinois Licensed Professional Engineer).
- The person(s) who will perform the duties of Project Engineer who will be directly involved and responsible in the development of the reports and/or plans (must be an Illinois Licensed Professional Engineer).

- The person who will be in charge of route surveys (must be an Illinois Licensed Professional Engineer and/or an Illinois Licensed Professional Land Surveyor).
- The person who will be in charge of land surveys (must be an Illinois Licensed Professional Land Surveyor).
- The person who will perform the work in the area of structure plan preparation documents (must be an Illinois Licensed Structural Engineer). In addition, the staff performing this work must be identified.
- The person who will perform the QC/QA review work of all milestone submittal documents (must be an Illinois Licensed Professional Engineer for roadway work and must be an Illinois Licensed Structural Engineer for structural work with adequate plan review experience).

Firms must be prequalified in the following categories to be considered for this project:

**Highways (Roads & Streets)**  
**Structures (Highway: Typical)**

Statements of Interest, including resumes of the key people noted above, must be submitted electronically to the Central Bureau of Design and Environment at the following address: [SOIPTB@dot.il.gov](mailto:SOIPTB@dot.il.gov).

24. **Job No. P-97-035-06, FAP 322 (US 51), from Pana to Centralia, Phase I Corridor Study, Various Counties, Region Four/District Seven.**

This project contains federal funds.

This project will utilize the **Cost Plus Fixed Fee (CPFF)** method of contracting.

**This project requires 10.00% DBE participation.**

The **Complexity Factor** for this project is **0.07**.

The Consultant who is selected for this project and all subconsultants the prime Consultant will be using are scheduled to attend an initial meeting on **October 6, 2006** at **9:00 A.M.** at the Region Four/District Seven Office in **Effingham**.

Phase I engineering services are required to perform all work associated with a Corridor Study, Location/Design Report, and an Environmental Impact Statement to upgrade US 51 to an expressway design from Pana to Centralia. The study will begin at the proposed expressway at Pana and end at the existing expressway south of Centralia. All work for this project will be in English units and all NEPA documents must be in dual (English and metric) units.

The Consultant's work includes data collection, survey, preparation of base maps and mosaics, location studies, alternate alignment studies, interchange/intersection design studies, Location Drainage Studies, Hydraulic Studies, TS&L, noise and possible air quality analyses, cost estimates, traffic management analyses, Environmental Impact Statement, Corridor Report, Design Report, and all other work necessary to complete each separate Phase I study.

This project includes extensive public involvement utilizing Context Sensitive Solutions techniques. Public Involvement will include, but is not be limited to, holding informational meetings and public hearings, preparation of exhibits for these meetings and hearings, and evaluation and incorporation of comments from these meetings into the project. The Consultant will also be required to coordinate and conduct meetings with a variety of groups designed to generate input from local representation regarding the concerns and needs of the region. The Consultant will be responsible for involving the local representation, maintaining their involvement and evaluating and incorporating their constructive input throughout the entire project.

The project is anticipated to be completed in two Parts. All work necessary for the Corridor Study will be negotiated as Part 1 of the Prime Agreement. Near the completion of the Corridor Study, Part 2 of the project, which includes all work required to complete the Location/Design Report and an Environmental Impact Statement, will be negotiated.

The Statement of Interest must include a comprehensive public involvement plan. This plan should address agency, local representation, and public input, and any other collateral input relative to project progress. The submittal must also include the plan for news media involvement, dissemination of information, and any necessary property owner contacts.

The department will furnish the Consultant with a 1970 Corridor Report, existing microfilm plans as available, traffic data, accident data, existing right of way information, and aerial survey. The department will also provide the biological survey, wetland delineation, cultural resource survey, threatened and endangered species survey, and special waste location reconnaissance survey.

The estimated construction cost for this project is \$130,000,000. The Consultant's work includes Corridor Study, Design Study, and an Environmental Impact Statement. The completion date for this contract will be 48 months after authorization to proceed.

Key personnel listed on **Exhibits A** and **B** for this project must include:

- The person who will assume the duties of Project Manager for all aspects of the work documents (must be an Illinois Licensed Professional Engineer).
- The person who will perform the duties of Project Engineer, that individual in charge who is directly involved in the development of the contract documents (must be an Illinois Licensed Professional Engineer).
- The person who will perform the work in the area of structure plan preparation documents (must be an Illinois Licensed Structural Engineer). In addition, the staff performing this work must be identified.
- The person who will perform the QC/QA review work for all milestone submittal documents (must be an Illinois Licensed Professional Engineer for roadway work and must be an Illinois Licensed Structural Engineer for structural work with adequate plan review experience).
- The Environmental Lead, who will be responsible for the day-to-day management of the environmental work effort, and persons responsible for all environmental disciplines including water quality, noise, socio-economics and ecology. Environmental staffing on **Exhibit B** must match the staffing presented in the firm's most recent Statement of Experience and Financial Condition.
- The person in charge of Public Involvement procedures. Include a detailed description of public involvement work he/she has directed involving facilitation public meetings and public hearings, organizing work groups and press conferences, drafting press releases and property owner contact letters, etc.

Firms must be prequalified in the following categories to be considered for this project:

**Location/Design Studies (New Construction/Major Reconstruction)**  
**Environmental Reports (Environmental Impact Statements)**  
**Structures (Highway: Typical)**

Statements of Interest, including resumes of the key people noted above must be submitted electronically to the Central Bureau of Design and Environment at the following address: [SOIPTB@dot.il.gov](mailto:SOIPTB@dot.il.gov).

25. **Job No. D-97-030-06, Various, Phase I and/or Phase II Projects, Various Counties, Region Four/District Seven.**

This project will utilize the **Direct Labor Multiple (DLM)** method of contracting.

**This project requires 10.00% DBE participation.**

The **Complexity Factor** for this project is **0**.

The Consultant who is selected for this project and all subconsultants the prime Consultant will be using are scheduled to attend an initial meeting on **October 10, 2006, at 10:00 A.M.** at the Region Four/District Seven Office in **Effingham**.

Phase I and/or II engineering services are required for various projects in District Seven. Work orders under the blanket agreement will be negotiated and authorized by the department on an as-needed basis. All work for this project will be in English units and all NEPA documents must be in dual (English and metric) units.

The Phase I work, if required, may consist of conducting route surveys, land surveys, hydraulic surveys, hydraulic analysis, geometric studies, environmental studies, preparing Project Reports, and preparing and/or reviewing geotechnical reports including soils, pavement and foundation recommendations. This work may include data collection, development of alignment alternatives, cost estimates, traffic management analysis, accident analysis, bridge condition reports, preparing and/or reviewing hydraulic reports, type, size and location drawings, and other related work and exhibits necessary to produce the Project Reports.

The Phase II work, if required, may consist of conducting route surveys, land surveys, hydraulic analysis, geometric studies, and preparation of type, size and location drawings, structure plans, roadway plans, and any other related work to complete final plans, specifications and estimates as necessary.

The department will furnish the Consultant with available as-built plans, microfilm, field notes, existing right-of-way plans, aerial photos, boring logs, existing Bridge Condition & Hydraulic Reports, and other information necessary for the Consultant to accomplish his work.

The various proposed projects may consist of simple patching and resurfacing, bridge repair, bridge rehabilitation, new bridge design, urban projects with storm sewer, widening and resurfacing and/or new roadway projects which may include preparation of plats & plans for right-of-way acquisition. The Consultant's work may include either complete projects or a portion of the total engineering work on a certain project.

The estimated construction cost for these projects may range from \$500,000 to 2,000,000. The completion date for this contract will be 30 months after authorization to proceed.

Key personnel listed on **Exhibit A** for this project must include:

- The person who will assume the duties of Project Manager for all aspects of the work documents (must be an Illinois Licensed Professional Engineer).

- The person who will perform the work in the area of structure plan preparation documents (must be an Illinois Licensed Structural Engineer). In addition, the staff performing this work must be identified.
- The person who will perform the QC/QA review work for all milestone submittal documents (must be an Illinois Licensed Professional Engineer for roadway work and must be an Illinois Licensed Structural Engineer for structural work with adequate plan review experience).

Firms must be prequalified in the following categories to be considered for this project:

**Highways (Roads & Streets)**  
**Structures (Highway: Typical)**  
**Location/Design Studies (Rehabilitation)**

Statements of Interest, including resumes of the key people noted above, must be submitted electronically to the Central Bureau of Design and Environment at the following address: [SOIPTB@dot.il.gov](mailto:SOIPTB@dot.il.gov).

# NOTICE ALLOWABLE DIRECT COSTS

**The allowable direct costs will be effective February 1, 2005.**

The following costs are allowable when requested by the Department and included in the contract. The costs are allowable when it is customary for the firm to bill for the cost and it can be itemized in the firm's billing and accounting systems.

Per Diem	Conus Rate ( Maximum)
Lodging	Conus Rate (Maximum)
Air Fare	Coach rate with 2 weeks notice as approved
Vehicles	
Mileage	federal travel rate* maximum
Daily Rate (owned or leased the same)	\$36 /day- District 1 \$32/day- downstate
Overtime	Premium portion
Tolls	Actual Cost
Film and Film Processing**	Actual Cost
Overnight Delivery/Postage Courier Service	Actual Cost
Copies of Deliverables and Mylars	Actual Cost
Specific insurance – required for project	Actual Cost
CADD	Actual Costs ( Maximum of \$15.00/Hr)
Monuments – Permanent	Actual Cost
Payment for Newspaper Ads	Actual Cost
Web Site	Actual Cost
Facility Rental for Public Meetings & Exhibits/Renderings & AV equipment/transcriptions	Actual Cost
Recording fees	Actual Cost
Courthouse fees	Actual Cost
Testing of Soil Samples	Actual Cost
Lab Services (excluding Phase III normal construction inspection such as beam breaks, cylinder breaks, pavement cores)	Actual Cost
Equipment rental specific for a project (snooper for bridge inspection, noise meter, etc.)	Actual Cost
Specialized equipment – on an as needed basis with prior approval	Actual Cost
Traffic Systems	Actual Cost
Mobile Phone (for traffic system implementation)	
Telephone Usage (for traffic system monitoring)	
Storm sewer cleaning and televising	Actual Cost
Traffic control and protection	Actual Cost
Aerial photography and mapping	Actual Cost
Utility exploratory trenching	Actual Cost



# NOTICE

## ALLOWABLE DIRECT COSTS

- \* website for Conus and federal rates  
[http://www.gsa.gov/Portal/gsa/ep/contentView.do?queryYear=2005&contentType=GSA\\_BASIC&contentId=17943&queryState=Illinois&noc=T](http://www.gsa.gov/Portal/gsa/ep/contentView.do?queryYear=2005&contentType=GSA_BASIC&contentId=17943&queryState=Illinois&noc=T)
- \*\* Use of digital cameras verses film cameras is encouraged when firms own digital cameras and the discussion of their use will be part of the negotiations. Film & copies will be reimbursed at actual costs.
- On all agreements authorized after January 1 2005, GPS Equipment is considered tools of the trade.

## PHASE III

Phase III Communications:

Cell Phones (maximum of 3 without additional approval. Personal phones that do not remain on the job site are not allowable) \$70/month/phone (Maximum)

radio communication  
2-way radio

Actual Cost  
Actual Cost

**Vehicles (Only for Vehicles assigned to project)**  
**DAILY RATE ONLY**

\$36 /day- District 1  
\$32/day- downstate

The number of days will be calculated as follows:

For extended stay \*\*- Number of days on job site plus one day to travel to and from job site

Weekly (hotel) –Number of days on job site plus one day to travel to and from job site per week.

Actual cost based on  
firm policy

Shift Differential

\* \*\*Extended Stay Status applies to individuals on the project over 20 consecutive working days . The decision whether individuals will stay over the week-end will be made after the Contractor's schedule is available and shall be made jointly by the Consultant Liaison and the IDOT Resident.

NOTES:

For Construction inspection contracts beam and cylinder breaks are not reimbursable.

Overtime to employees traveling to and from the site will be allowable depending on the firms policy and limited to the Department's policy (see Departmental Order 4-1).

## **CHANGE IN DIRECT LABOR MULTIPLIER**

Effective for the DIRECT LABOR MULTIPLIER METHOD OF COMPENSATION:

**FOR PROJECTS SELECTED AFTER MARCH 1, 2004** THE DIRECT LABOR MULTIPLIER USED FOR THE PRIME AND SUPPLEMENTAL AGREEMENTS ASSOCIATED WITH THESE PROJECTS WILL BE **2.80** IN THE COMPENSATION EQUATION:

$DLM = [(2.80 + R) \times \text{direct labor}] + \text{directs costs}$

R = complexity factor given in the advertisement.

**IF THE PROJECT WAS SELECTED PRIOR TO MARCH 1, 2004** THE DIRECT LABOR MULTIPLIER FOR ALL PRIME AND SUPPLEMENTAL AGREEMENTS ASSOCIATED WITH THE PROJECT IS AS FOLLOWS:

Phase I and II Primes and supplements for projects selected prior to PTB 127 = 3.0

(Except Phase II of Phase I/Phase II projects authorized after May 21, 2003)

Phase III primes for projects selected prior to PTB 127-2.80

All Primes and supplements for projects selected after March 1, 2004 or later and Phase II of Phase I/Phase II projects authorized after March 1, 2004 - 2.80.

**NOTICE**  
**FOR CHANGE IN**  
**RATES ESCALATED**

**Effective with the selection of**  
**PTB 139, April 5, 2006**

Any Prime agreements prior to PTB 139 and associated supplements will be processed at a rate of no more than 5%.

Beginning with the selection of PTB 139, April 5, 2006, and all associated supplements, the escalation rate will be no more than 3%.

This does not effect the procedure for calculating the agreement's upper limit of compensation nor how to invoice labor. Average hourly rates per employee classifications will still be escalated for each year of the contract and the employees' actual salary is invoiced.

If you have any questions please call Cheryl Cathey at (217) 782-7557.

**Notice  
Concerning  
Exhibits A and B  
Current Obligations  
Disclosure Forms A and B**

Please review the documents listed above and use the latest version when submitting a Statement of Interest for the Professional Transportation Bulletin.

The Exhibits, Current Obligations and Disclosure Forms are available as Word documents and may be downloaded from our web-site:

<http://www.dot.il.gov/desenv/deform.html>

The bookmarks, listed in the bulletin, for the Exhibits, Current Obligations and Disclosure forms are also linked to the web-site.

The Word documents are labeled as follows:

Exhibits = **EXHAB**

Current Obligation Form = **CURRENT OBLIGATIONS**

Disclosure Forms = **DISC2**

# NOTICE

## **Construction Guides and Manuals – Memorandums**

The Department's Construction Guides, Manuals and Memorandum are available on our web-site at the following address: <http://www.dot.il.gov/dobuisns.html>.

The Manual Sales Order Form is also available at the following address: <http://www.dot.il.gov/desenv/orderform.html>

# NOTICE CONSULTANT PREQUALIFICATION SUBMITTAL TIMES

For firms currently prequalified, the entire Statement of Experience and Financial Condition is required to be submitted every three (3) years.

Consultant firms are required to submit the Corporate and Financial portion of the Statement of Experience and Financial Condition annually.

Firms are required to report to this office any additions or deletions of licensed professional staff or any other key personnel that would affect the firm's prequalification in a particular category. Notice of changes must be submitted within 15 calendar days of the change.

Firms may also continue to request additional categories of prequalification at any time.

The following schedule is attached for your use:

Firm Name beginning with:	2006 Submittal	2007 Submittal	2008 Submittal
A through E	Corp. & Financial	Entire SEFC	Corp. & Financial
F through N	Corp. & Financial	Corp. & Financial	Entire SEFC
O through Z	Entire SEFC	Corp. & Financial	Corp. & Financial

The Corporate and Financial Portion of the Statement of Experience and Financial Condition consists of pages 1, 2 and 10 through 20.

The most current Statement of Experience and Financial Condition (SEFC), Description and Minimum Requirements and a listing of all prequalified consultants are available at:

<http://www.dot.il.gov/desenv/preqcons.html>

## **“Special Notice Regarding Disadvantaged Business Enterprises”**

The Illinois Department of Transportation (IDOT) has designated various projects advertised in the Professional Transportation Bulletin as requiring participation by Disadvantaged Business Enterprises (DBEs). As a condition for any firm to be considered for a project requiring DBE participation, it must subcontract a minimum of the designated percent to a DBE. Each firm's letter must include a statement that it intends to subcontract the designated percent to a DBE. The Exhibit A in the Statement of Interest must include the DBE Consultant and the category of work they are going to perform.

To be considered as a prime consultant or subconsultant, a DBE must be prequalified with IDOT's Division of Highways' Bureau of Design and Environment (BDE). IDOT's Bureau of Small Business Enterprises (SBE) maintains a Disadvantaged Business Enterprises Directory of certified DBEs for the purpose of providing a reference source to assist firms. You can view/print and download the most current listing of DBE firms at IDOT's web site <http://www.dot.il.gov> under "Doing Business" "Small Business Enterprises" "Disadvantaged Business Enterprises (DBE) Program/IL UCP DBE Directory." DBE firms who are prequalified by BDE and are interested in performing consultant work are listed under the UCP Directory by Category, Architecture/Engineering Sorted by firm. Any firm desiring to subcontract work to firms that are not certified DBEs should encourage them to become certified by contacting SBE's Certification Section at (217) 782-5490.

Failure to assign at least the designated percent to one or more DBEs or to demonstrate that a good faith effort was made to assign the designated percent shall result in one of the following:

1. Notification to the prime consultant that the Agreement will not be signed until the percentage of DBE participation is met.
2. The Agreement will be signed with the understanding that payments to the prime consultant will be reduced by an amount determined by multiplying the total Agreement fee by the designated percent and subtracting the dollar value of DBE subcontracts.
3. Contract negotiations will be terminated.

Upon completion of the contract, should it be determined the prime consultant failed to assign the designated percent to an eligible DBE or demonstrated that a good faith effort was made to assign the designated percent as agreed upon, payment to the prime consultant will be reduced by the amount set forth in number 2 above.

A complaint regarding any decision rendered by or action by any Division or Office of IDOT pursuant to these requirements may be filed with the Secretary of IDOT.

## NOTICE FOR DOCUMENTATION OF CONTRACT QUANTITIES

Information regarding the Documentation of Contract Quantities can now be found on our web site ([www.dot.il.gov](http://www.dot.il.gov)) under Public Partners. The registration form, registration process and class format is available.

If you have questions regarding this class or the content on the web page, please email [cbctraining@dot.il.gov](mailto:cbctraining@dot.il.gov).



## **NOTICE OF ELECTRONIC SIGNATURES**

In order for us to verify your scanned in signature (on cover letters, Exhibit A and Disclosure Forms A and B) we request that you complete the Signature Certification for Electronic Submittals form and submit it to us in **hard-copy** immediately. A signature certification form must be completed for each individual that will be signing any of the above mentioned documents. **If you have previously submitted your Signature Certification and no new individual will be signing the documents you are not required to re-submit the document.**

Send Submittal to:  
Illinois Department of Transportation  
Ms. Cheryl Cathey  
Bureau of Design and Environment  
Attn: Consultant Unit (Room 330)  
2300 South Dirksen Parkway  
Springfield, IL 62764

If you have questions, please contact Carrie Kowalski at: [Carrie.Kowalski@illinois.gov](mailto:Carrie.Kowalski@illinois.gov)

Signature Certification for Electronic Submittal

## Signature Certification For Electronic Submittals

I certify that my electronically scanned-in signature appearing in future electronic Statements of Interest and associated documents submitted by our firm is authorized to be affixed by the person doing so and will be binding on the firm.

\_\_\_\_\_ (Firm)                      \_\_\_\_\_ (Signature)                      \_\_\_\_\_ (Title)

STATE OF \_\_\_\_\_

COUNTY OF \_\_\_\_\_ I, \_\_\_\_\_

a Notary Public in and for the County and State aforesaid, DO HEREBY CERTIFY that

\_\_\_\_\_

known to me to be the same person whose name is subscribed to the foregoing instrument, appeared before me this day in person and acknowledged that (he/she) signed, sealed and delivered the said instrument as a free and voluntary act, for the uses and purposes therein set forth.

GIVEN under my hand and Notary Seal this \_\_\_\_\_ day of \_\_\_\_\_ A.D. \_\_\_\_\_.

\_\_\_\_\_  
NOTARY PUBLIC

Notice  
Of Requirement For  
Illinois Department Of Human Rights (IDHR)  
Public Contract Number

Following selection, contract all proposal packages submitted to the Illinois Department of Transportation (IDOT) must contain the firm's IDHR number and the expiration date. The Department is required by law to require this number from all parties contracting with the State of Illinois. If your firm currently does not have an IDHR number the application form may be obtained from the following web-site [www.state.il.us/dhr/](http://www.state.il.us/dhr/) or may also be obtained by contacting:

DHR, Public Contracts Section  
Public Contracts Division  
100 W. Randolph,  
Suite 10-100  
Chicago, IL 60601

or by calling: 312-814-2432 (TDD 312-263-1579)

NOTE: An IDHR public contract number is not required if the firm employs fewer than 15 employees.

## NOTICE FOR JOINT VENTURE

Statements submitted by Joint Ventures will be considered. The Joint Venture, Agreement signed by all parties, must be included with the statement of interest. The Joint Venture entity will have the sum of the individual firm's prequalification, capacity and evaluation history. IDOT **does not** have a form for joint venture agreements. The firms submitting as a joint venture are required to obtain and submit the joint venture agreement.

The required insurance coverage applies to the Joint Venture entity.

The Joint Venture entity will submit one statement of interest with the following specified:

- the party who will be the managing firm
- the firm responsible for each prequalification category
- each individual firm's work left, disclosure forms and delinquent dept forms.
- the firm responsible for invoicing
- One Exhibit A plus other required documents specified in the PTB combining the information for all firms. (Indicate personnel name and firm name on exhibit A for key staff)

### **EXHIBIT A EXAMPLE:**

#### **Name Required Prequalification Category :**

	<u>Location Drainage</u>	
*Name	<u>Mr. John Smith (ABC Engineering Assoc.)</u>	
Category	<u>PE</u>	(PE, SE, LS)
Registration #	<u>62012345</u>	
Year Registered	<u>1995</u>	State <u>IL</u>
Office Location:		
City	<u>Chicago</u>	State <u>IL</u>

A firm planning to submit a Statements of Interest as a joint venture is required to contact the department for a new Statements of Interest Code. Contact Carrie Kowalski by e-mail at [Carrie.Kowalski@illinois.gov](mailto:Carrie.Kowalski@illinois.gov). The code is required so that the joint venture proposal is recognized as a joint venture.

# NOTICE

Beginning with PTB 135 and all subsequent bulletins, the maximum hourly rate for **project managers and principals** will be \$70/hour. This rate may be used on all supplemental agreements received in the central bureau of Design and Environment on or after May 1, 2005 upon concurrence by the IDOT project manager.

# **NOTICE**

## **Mobilization on Phase 3 Consultant Contracts**

As of December 8, 2005 mobilization may be negotiated on Phase 3 contracts. Mobilization is a negotiated amount based on the demonstrated need (up to 3% of the upper limit of labor in the agreement), which a consultant may invoice the department for upon execution of the agreement. Half of the mobilization amount will then be deducted from the invoice billing at 25% of the project's completion and the second ½ from the invoice billing for 50% of the project's completion.

Note: This is **not** an additional amount of compensation above the prime agreement amount.

### **Implementation:**

- Phase 3 contracts only
- Firm must show during negotiations, the need for mobilization based upon demonstrated costs to be incurred prior to commencement of performance of agreement services.
- Initially the mobilization will not be available on federally funded consultant agreements,
- Mobilization will be eligible in the Start-up Agreements. The amount shown will be no more that 3% of the Start-up Agreement amount. That amount could be invoiced immediately upon execution of the start-up agreement. The remainder of the mobilization would be specified in the prime agreement and invoiced upon execution of the prime agreement.
- New Invoices for phase 3 contracts will be developed for use for contracts with mobilization. The invoice will show the total mobilization in the contract, the outstanding mobilization balance before the current invoice and the outstanding balance after the current invoice.
- The mobilization dollar amount will be shown in the phase 3 contracts and the following clause will be added to contracts revising the Standard Agreement for Consultant Services:

**New Section 2.81 (h):**

**2.81 PARTIAL PAYMENTS/INVOICES**

- h) Construction Engineering Agreements may include a provision for mobilization. If mobilization has been negotiated with the CONSULTANT as part of the method of payment; the mobilization shall be made and recovered in accordance with the provisions of this subsection. The mobilization amount negotiated shall be no more than 3% of the labor upper limit of compensation specified in Section 4 of the Prime Agreement. Upon execution of the AGREEMENT, the CONSULTANT may invoice for the mobilization amount. After payment, half of the mobilization shall be shown as a deduction from the invoice billing at 25% of the project's completion and the second half from the invoice billing for 50% of the project's completion.

## Notice of Availability of the English Survey Manager Database

An updated English Survey Manager Database (idote.smd) is available on the IDOT web site. The location of this file is on the CADD Support Home Page under Geopak Files>Database Files.

### Highlight of changes:

A new category, Default Survey Codes, has been added to the hierarchical database structure. This category contains a 900 series of "default" point codes.

### The additions are as follows:

900-909	Default 2d point Level 1, Color 1 (blue), TH=7.5 TW=7.5 DTM Control – Not included
910-919	Default 3d point Level 1, Color 1 (blue), TH=7.5 TW=7.5 DTM Control – Not included
920-929	Default 2d string Level 1, Color 1 (blue), TH=7.5 TW=7.5 Linear Feature – Level 1, Color 1 (blue) DTM Control – Not included
930-939	Default 3d string Level 1, Color 1 (blue), TH=7.5 TW=7.5 Linear Feature – Level 1, Color 1 (blue) DTM Control – Include as Spot and Break

These additions have default symbologies with field comments enabled which will allow surveyors the ability to add miscellaneous point codes to the database. These point codes can then be manipulated while in the point edit or chain edit modes of Geopak.

An updated informational database in HTML format will also be available on the CADD Support Home Page under "Survey Point Code Descriptions". This is available in English and Metric formats. Also included in this group is a Readme file, which details the use for this information.



**NOTICE**  
**For**  
**Prequalification of Consultants & DBE Revisions**

**Prequalification:**

As stated in each Professional Transportation Bulletin under the guidelines:

Consultant firms acting as prime must be prequalified in all of the advertised areas listed in the project advertisement even if they plan to subcontract part of the project, except where noted in a specific project advertisement. If the prime is not prequalified in the required category(s) stated in the project advertisement, that firm's Statements of Interest cannot be considered for the item.

Within the Statements of Interest (Exhibit A page 3 of 3) the prime must identify any subconsultants and the item(s) of work they will perform. Subconsultants must be prequalified in the category of work they will be performing.

Also as stated in the Standard Agreement Provisions: 2.24 SUBLETTING, ASSIGNMENT OR TRANSFER:

Subconsultants must be prequalified in accordance with the department requirements. For specialized services that are required but which do not fall into the areas of prequalification of the department, a non-prequalified firm may be used with department approval.

**DBE Participation:**

The U.S. DOT regulation, 49CFR Sec. 26.55(a), states, "When a DBE participates in a contract, you count only the value of the work actually performed by the DBE toward the DBE goals." The IDOT and U.S. DOT regulations further state:

When a DBE subcontracts part of the work its contract to another firm, the value of the subcontracted work may be counted toward DBE goals only if the DBE's subcontractor is itself a DBE. Work that a DBE subcontracts to a non-DBE firm does not count toward DBE goals.

Effective immediately all subconsultant proposals where a DBE is utilized for the main contract and it is necessary for them to obtain non professional services which would be listed as a direct cost, the amount of those services will not apply to the DBE goal. For example if a DBE geotechnical firm is being used and they use a non-DBE drilling company to do the borings, the cost for this work will not apply to the DBE goal.

However any direct costs incidental to doing the work, per diem, hotel costs etc. will still counted toward the goal.

## NOTICE

### QUALITY ASSURANCE PREQUALIFICATION CATEGORY

This notice is important for consultants who are, or wish to be, prequalified in the Quality Assurance (QA) prequalification category. The requirement for accreditation of QA Testing laboratories has been phased in over the last two years.

QA Testing labs must be fully accredited to be considered for any new contracts or to renew prequalification.

Note: Neither prequalification nor accreditation is required for consultants working directly for contractors, performing Quality Control (QC) activities.

Synopsis of requirements:

- The laboratory must be accredited under the AASHTO Accreditation Program (AAP). The AAP requires on-site inspections and participation in proficiency sample programs. The Portland cement concrete (PCC) inspections and proficiency programs are conducted by the Cement and Concrete Reference Laboratory (CCRL). The hot-mix asphalt (HMA) programs are conducted by the AASHTO Materials Reference Laboratory (AMRL). Either CCRL or AMRL can conduct the aggregate program for your lab. Both AMRL and CCRL are scheduled to be in Illinois this year.
- The laboratory shall be accredited in all of the test procedures specified in Bureau of Materials and Physical Research (BMPR) Policy Memorandum "Minimum Private Laboratory Requirements for Construction Materials Testing or Mix Design." The current policy (2001-01) can be found in the Manual of Test Procedures for Materials. An update is scheduled to be published soon and may be viewed or downloaded from the Department's Web site.
- Personnel performing materials testing for aggregate, PCC, and HMA shall have completed the appropriate QC/QA trained technician classes. Personnel performing soils field tests shall have completed IDOT class S-33, "Standard Earth Density."

The description of the prequalification categories, the SEFC, and the BMPR Policy Memo may be viewed or downloaded from the IDOT Internet Site: [http:// www.dot.il.gov](http://www.dot.il.gov)

Information about the AAP accreditation and AMRL programs may be found on the AMRL Web Site: <http://patapsco.nist.gov/amrl/home/index.asp>

Information about the CCRL inspection and proficiency sample programs may be found on the CCRL Web Site: <http://www.bfrl.nist.gov/862/ccrl/front.htm>

Questions may be addressed to your District Materials Engineer or the Central Bureau of Materials and Physical Research.

**NOTICE**  
**Construction and Quality Assurance Consultants**  
**S 33- Geotechnical Field Testing and Inspection Class**

Professional Transportation Bulletin 117 included a notice that S 33 is a required class for technicians performing soil tests on construction projects. This includes consultant personnel providing Construction Inspection or Quality Assurance Testing on Department projects. The Department will schedule sessions of this class after determining the demand. Below is a description of the class and sign-up information.

**Course Objectives**

The student will be able to do the following: 1. Determine the Standard Dry Density and Optimum Moisture content of soil or soil mix according to AASHTO T 99. 2. Determine in-place density in accordance with approved test procedures. 3. Select the correct soil curve by the use of a one-point proctor and/or textural classification of the soils. 4. Determine the moisture content of a soil by either laboratory or field methods. 5. Perform validity checks of the soils test results. 6. Report test results in accordance with departmental requirements.

**Prerequisites:**

1. One year of college level technical training or six months experience, or consent of the course instructor;
2. High school math, including ability to calculate percentages.

**Course Length:**

Two Days, including written examination.

**Cost:**

There is no cost to consultants.

**Location:**

District One, District Eight, and other locations determined by demand.

**Schedule:**

As determined by demand; late fall, winter, and early spring.

**To Register:**

Mail or Fax a note or e-mail Brad Risinger in the Technical Training Unit. For each proposed registrant, provide name, firm name, address, phone, FAX and e-mail. Please list multiple registrants in priority order, since seating in initial classes may be limited.

Brad Risinger  
IDOT- Technical Training Unit  
313 Hanley Building  
2300 S. Dirksen Parkway  
Springfield, IL 62764  
217 782-0128  
FAX 217 524-7260  
[Brad.Risinger@illinois.gov](mailto:Brad.Risinger@illinois.gov)

## **TECHNICAL TRAINING ANNOUNCEMENT IDOT AND PROFESSIONAL ENGINEERING ORGANIZATION'S PARTNERSHIP**

The Illinois Department of Transportation will be continuing the technical training partnership with the professional engineering organizations during this training year from October 1, 2005 to June 30, 2006. The Department's Program Development Technical Training classes will once again be the main training program used in the partnership. The PD training program covers all areas of Phase I & II and has been training IDOT employees since 1995. The PD Training Program consists of 18 technical classes taught by IDOT personnel and 4 highly specialized classes presented by the University of Illinois and Northwestern University

The professional engineering organizations will be able to select classes based on their membership request to partner with the Department from the PD Training Schedule for Fiscal Year 06. The classes selected by the professional organization will be approved by the Department and the PD Steering Committee. To receive a copy of the PD FY 06 Training Schedule and class descriptions please contact the IDOT employees below. You can also contact your professional organization to see what classes they will be partnering with IDOT.

The Department hopes that the training partnership will help train the professional engineers and technicians in gaining a better understanding of the policies and procedure in all areas of Phase I & II and to help in creating a network of communication and the sharing of engineering knowledge.

The Department will continue to issue Professional Development Hours for all classes in which the participants attend. The technical training and the issuance of PDH's puts the Department in the fore front of ensuring that technical training is of high priority to the Department.

For more information about the partnering with the Department, please contact David D. Palia in District One at 847-705-4264 or by e-mail at [David.Palia@illinois.gov](mailto:David.Palia@illinois.gov) or Brad Risinger in Employee Services at 217-782-3708 or by e-mail at [Brad.Risinger@illinois.gov](mailto:Brad.Risinger@illinois.gov) in the Central Office.

## **TECHNICAL TRAINING ANNOUNCEMENT IDOT AND PROFESSIONAL ENGINEERING ORGANIZATION'S PARTNERSHIP**

The Illinois Department of Transportation will be continuing the technical training partnership with the professional engineering organizations during this training year from October 1, 2005 to June 30, 2006. The Department's Program Development Technical Training classes will once again be the main training program used in the partnership. The PD training program covers all areas of Phase I & II and has been training IDOT employees since 1995. The PD Training Program consists of 18 technical classes taught by IDOT personnel and 4 highly specialized classes presented by the University of Illinois and Northwestern University

The professional engineering organizations will be able to select classes based on their membership request to partner with the Department from the PD Training Schedule for Fiscal Year 06. The classes selected by the professional organization will be approved by the Department and the PD Steering Committee. To receive a copy of the PD FY 06 Training Schedule and class descriptions please contact the IDOT employees below. You can also contact your professional organization to see what classes they will be partnering with IDOT.

The Department hopes that the training partnership will help train the professional engineers and technicians in gaining a better understanding of the policies and procedure in all areas of Phase I & II and to help in creating a network of communication and the sharing of engineering knowledge.

The Department will continue to issue Professional Development Hours for all classes in which the participants attend. The technical training and the issuance of PDH's puts the Department in the fore front of ensuring that technical training is of high priority to the Department.

For more information about the partnering with the Department, please contact David D. Palia in District One at 847-705-4264 or by e-mail at [Dave.Palia@illinois.gov](mailto:Dave.Palia@illinois.gov) or Brad Risinger in Employee Services at 217-782-3708 or by e-mail at [Brad.Risinger@illinois.gov](mailto:Brad.Risinger@illinois.gov) in the Central Office.

## **NOTICE OF TRAINING OPPORTUNITY**

### **LAKELAND COLLEGE TRAINING COURSES**

Lakeland College will be conducting QC/QA Training again this year. Please visit the web-site for further information. Information or schedules can also be obtained by contacting Marlene Browning.

Marlene K. Browning  
Lake Land College  
5001 Lake Land Blvd.  
Mattoon, IL 61938-9336  
Phone: (217) 234-5285  
Fax: (217) 234-5381 E-Mail: [idotqcqa@lakeland.cc.il.us](mailto:idotqcqa@lakeland.cc.il.us)  
Internet Homepage: <http://www.lakeland.cc.il.us/idotqcqa>

### **NATIONAL HIGHWAY INSTITUTE (NHI) COURSES**

The National Highway Institute (NHI) Course listing as well as other pertinent information is available at the following address:

<http://www.nhi.fhwa.dot.gov/default.asp>

### **NATIONAL TRANSIT INSTITUTE (NTI) COURSES**

The National Transit Institute (NTI) Course listing as well as other pertinent information is available at the following address:

<http://www.ntionline.com/Courses.asp>