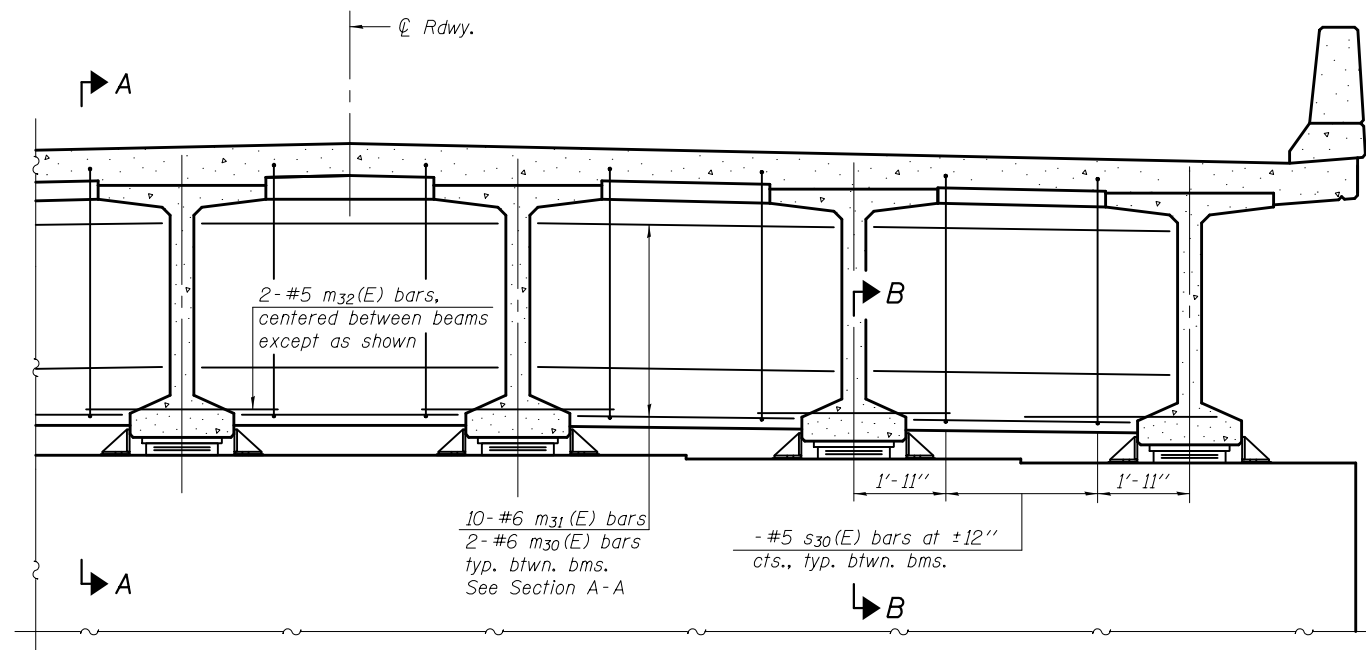
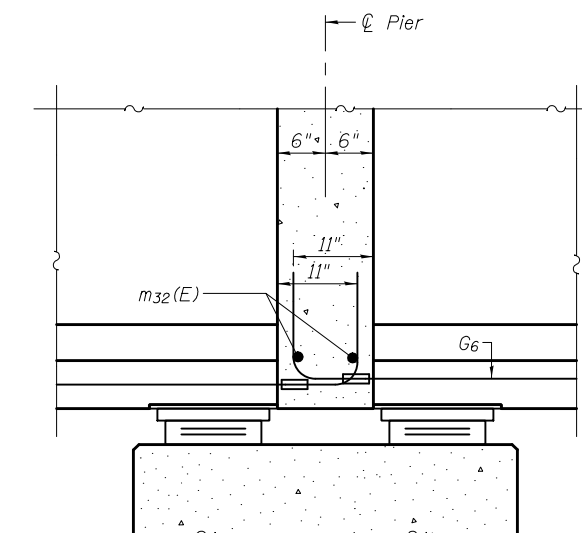
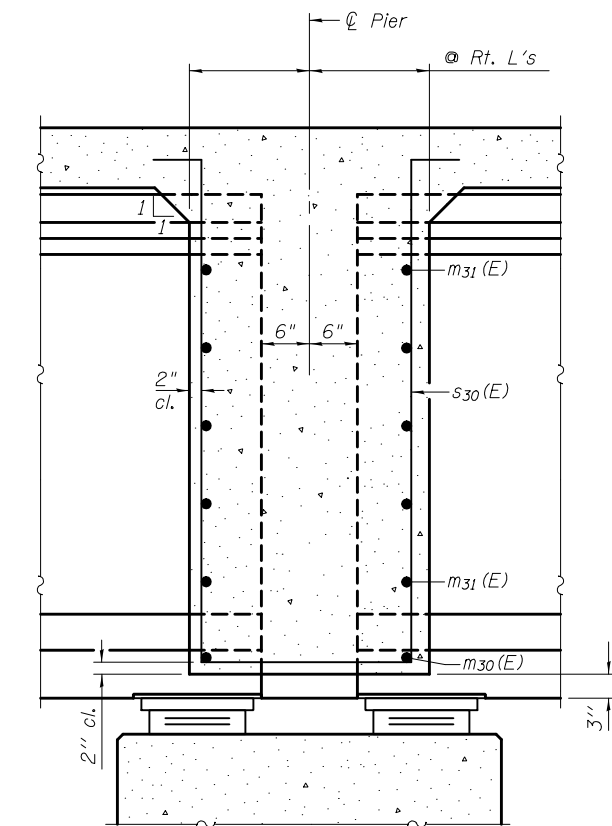


CELL / MODEL NAME	DESCRIPTION	DATE
DEP-BT6372	Diaphragm expansion pier; Bulb T-Beam 63-72 inch beam depth	7/15/2016
DEP-I3642	Diaphragm expansion pier; I-Beam 36-42 inch beam depth	7/15/2016
DEP-I4854	Diaphragm expansion pier; I-Beam 48-54 inch beam depth	7/15/2016
DEP-IL27	Diaphragm expansion pier; IL 27 inch beam depth	7/15/2016
DEP-IL36	Diaphragm expansion pier; IL 36 inch beam depth	7/15/2016
DEP-IL36N	Diaphragm expansion pier; IL 36 inch beam depth narrow top	7/15/2016
DEP-IL4554	Diaphragm expansion pier; IL 45-54 inch beam depth	7/15/2016
DEP-IL4554N	Diaphragm expansion pier; IL 45-54 inch beam depth narrow top	7/15/2016
DEP-IL6372	Diaphragm expansion pier; IL 63-72 inch beam depth	7/15/2016
DEP-IL6372N	Diaphragm expansion pier; IL 63-72 inch beam depth narrow top	7/15/2016



DIAPHRAGM AT PIER

Notes:
 Reinforcement bars in diaphragm are billed with superstructure on sheet of .
 Concrete in diaphragm is included with Concrete Superstructure on sheet of .
 For details of bar s₃₀(E) see sheet of .
 The s₃₀(E) bars shall be placed parallel to the beams.
 Spacing for these bars shall be at right angles to the beams.
 Horizontal dimensions for Section A-A and Section B-B are along ϕ of beam unless otherwise noted.



DEP-BT6372

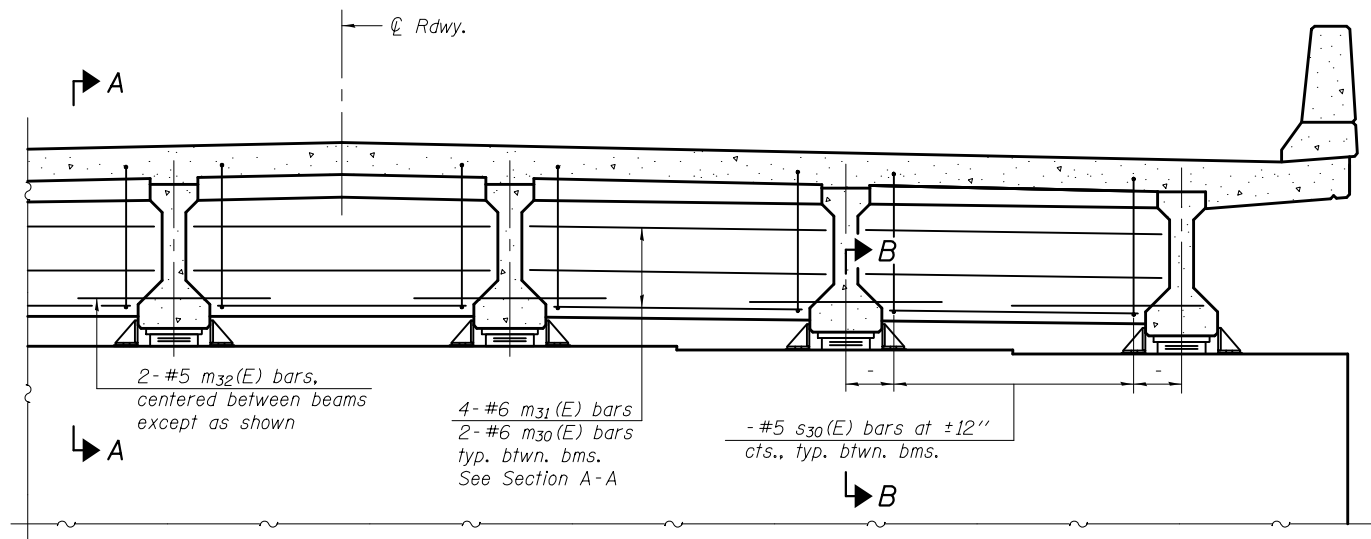
07-15-16

FILE NAME =	USER NAME =	DESIGNED -	REVISED -
		CHECKED -	REVISED -
		DRAWN -	REVISED -
		CHECKED -	REVISED -

**STATE OF ILLINOIS
 DEPARTMENT OF TRANSPORTATION**

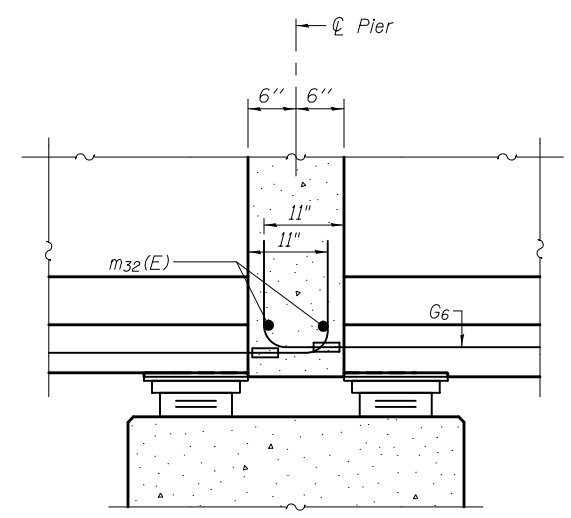
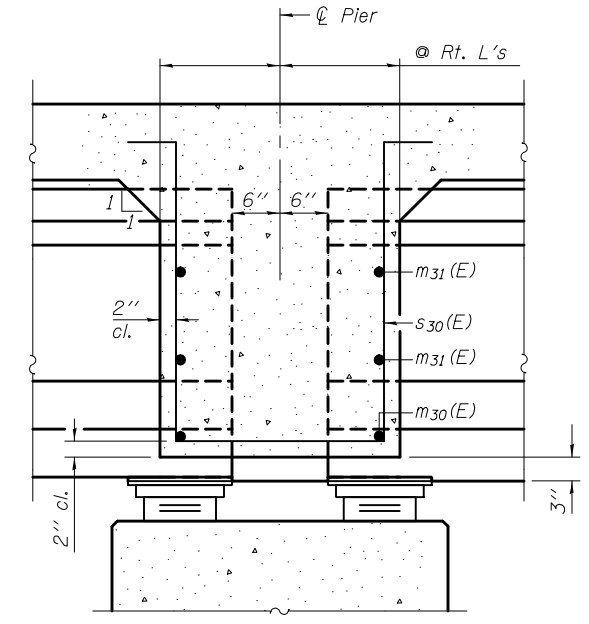
**DIAPHRAGM DETAILS
 STRUCTURE NO.**

F.A. RTE.	SECTION	COUNTY	TOTAL SHEETS	SHEET NO.
CONTRACT NO.				
ILLINOIS FED. AID PROJECT				



DIAPHRAGM AT PIER

Notes:
 Reinforcement bars in diaphragm are billed with superstructure on sheet of .
 Concrete in diaphragm is included with Concrete Superstructure on sheet of .
 For details of bar s₃₀(E) see sheet of .
 The s₃₀(E) bars shall be placed parallel to the beams.
 Spacing for these bars shall be at right angles to the beams.
 Horizontal dimensions for Section A-A and Section B-B are along ϕ of beam unless otherwise noted.



DEP-I3642

07-15-16

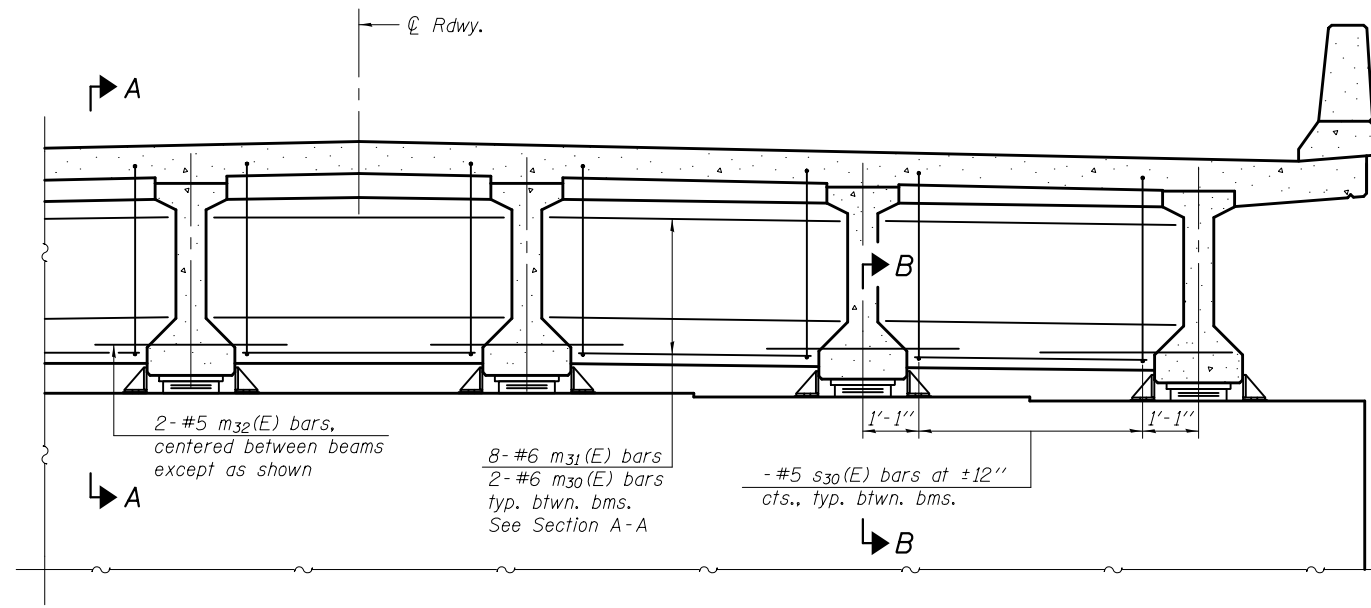
FILE NAME =	USER NAME =	DESIGNED -	REVISED -
		CHECKED -	REVISED -
		DRAWN -	REVISED -
		CHECKED -	REVISED -

**STATE OF ILLINOIS
 DEPARTMENT OF TRANSPORTATION**

**DIAPHRAGM DETAILS
 STRUCTURE NO.**

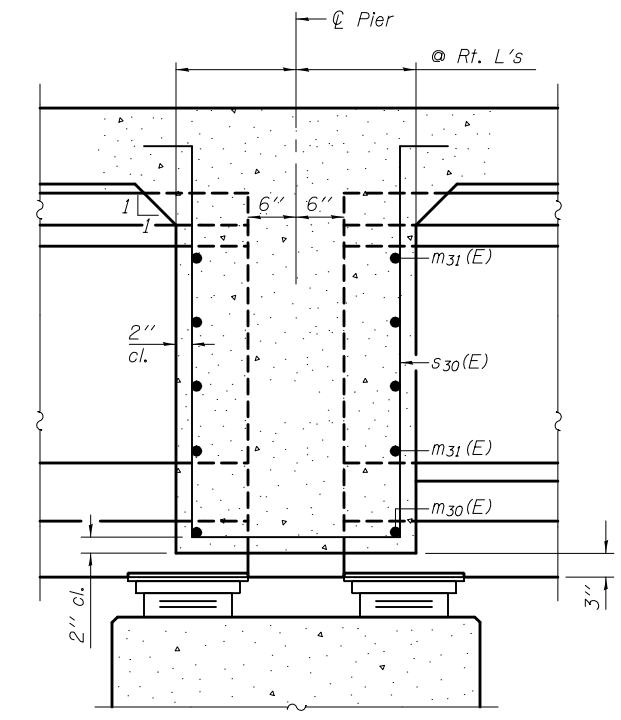
F.A. RTE.	SECTION	COUNTY	TOTAL SHEETS	SHEET NO.
CONTRACT NO.				

ILLINOIS FED. AID PROJECT

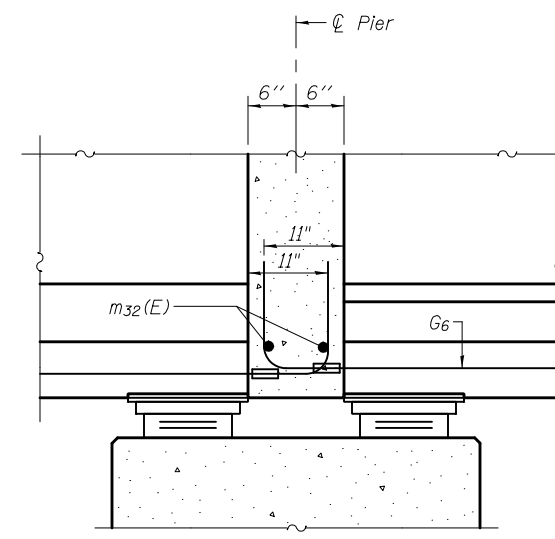


DIAPHRAGM AT PIER

Notes:
 Reinforcement bars in diaphragm are billed with superstructure on sheet of .
 Concrete in diaphragm is included with Concrete Superstructure on sheet of .
 For details of bar s30(E) see sheet of .
 The s30(E) bars shall be placed parallel to the beams.
 Spacing for these bars shall be at right angles to the beams.
 Horizontal dimensions for Section A-A and Section B-B are along ϕ of beam unless otherwise noted.



SECTION A-A



SECTION B-B

DEP-I4854

07-15-16

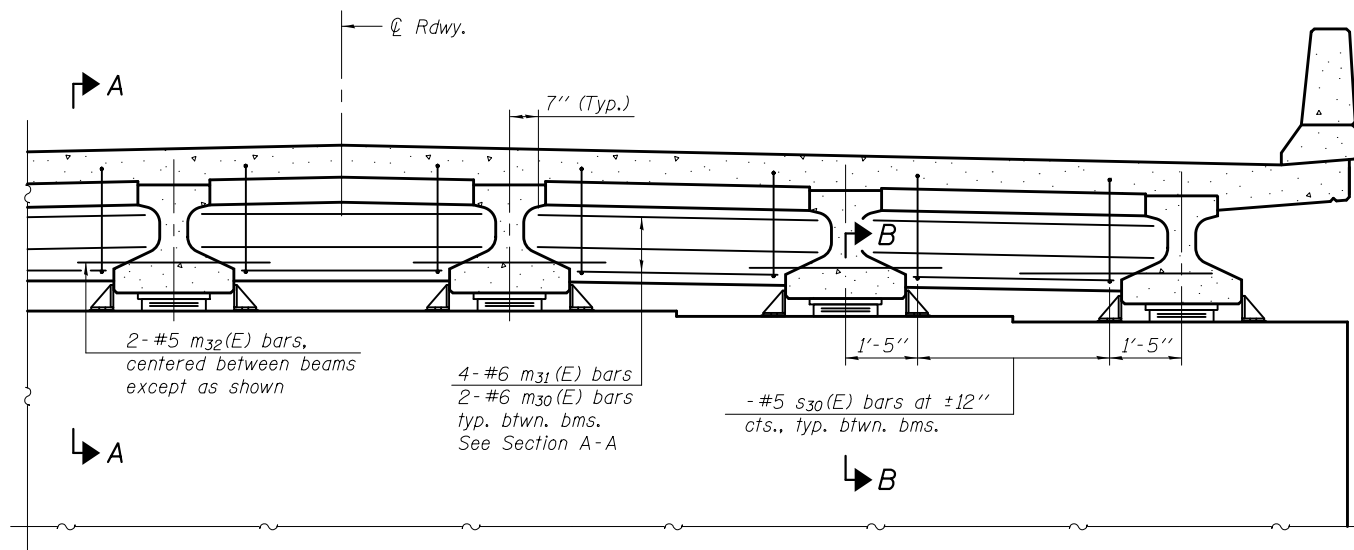
FILE NAME =	USER NAME =	DESIGNED -	REVISED -
		CHECKED -	REVISED -
		DRAWN -	REVISED -
		CHECKED -	REVISED -

**STATE OF ILLINOIS
 DEPARTMENT OF TRANSPORTATION**

**DIAPHRAGM DETAILS
 STRUCTURE NO.**

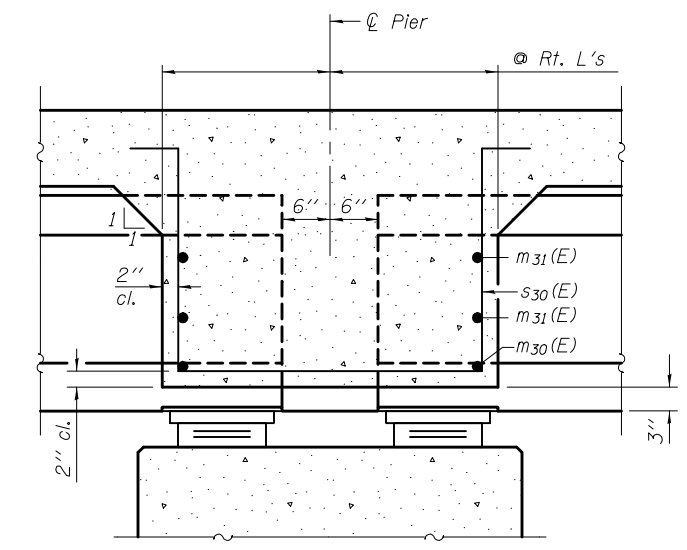
F.A. RTE.	SECTION	COUNTY	TOTAL SHEETS	SHEET NO.
CONTRACT NO.				

ILLINOIS FED. AID PROJECT

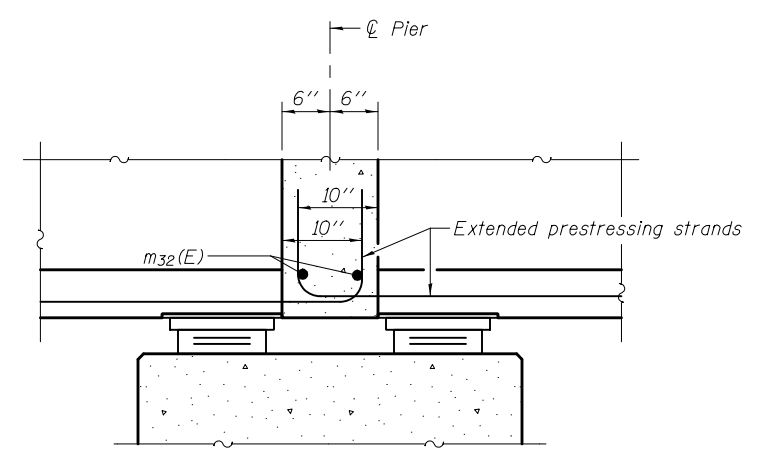


DIAPHRAGM AT PIER

Notes:
 Reinforcement bars in diaphragm are billed with superstructure on sheet of .
 Concrete in diaphragm is included with Concrete Superstructure on sheet of .
 For details of bar s30(E) see sheet of .
 The s30(E) bars shall be placed parallel to the beams.
 Spacing for these bars shall be at right angles to the beams.
 Horizontal dimensions for Section A-A and Section B-B are along ϕ of beam unless otherwise noted.



SECTION A-A



SECTION B-B

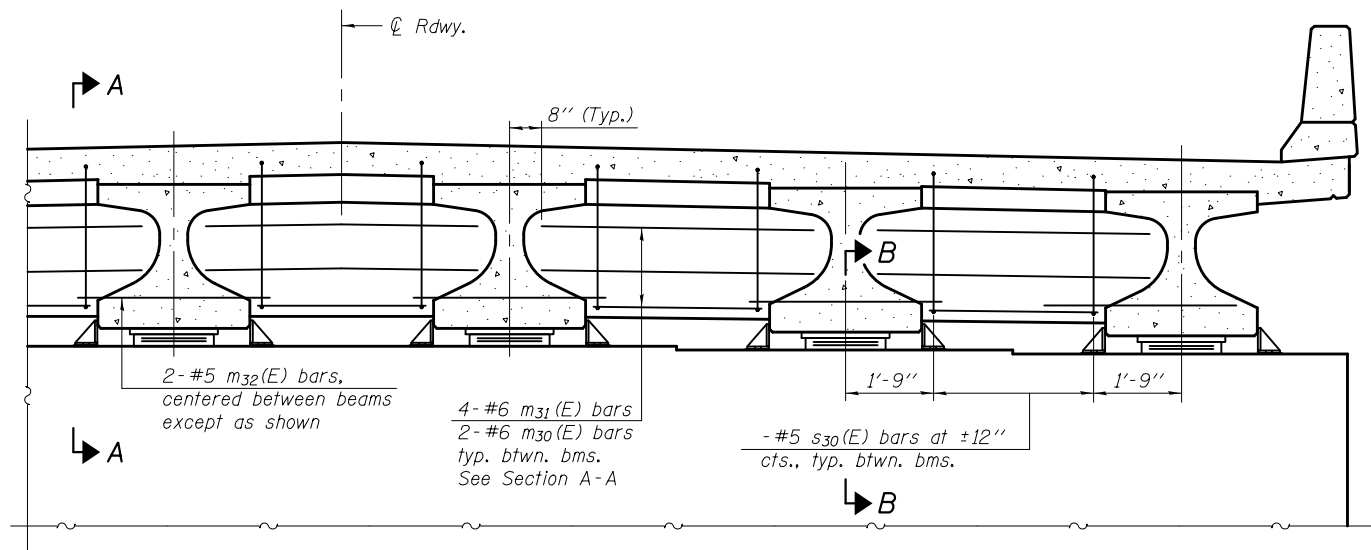
DEP-IL27 07-15-16

FILE NAME =	USER NAME =	DESIGNED -	REVISED -
		CHECKED -	REVISED -
		DRAWN -	REVISED -
		CHECKED -	REVISED -

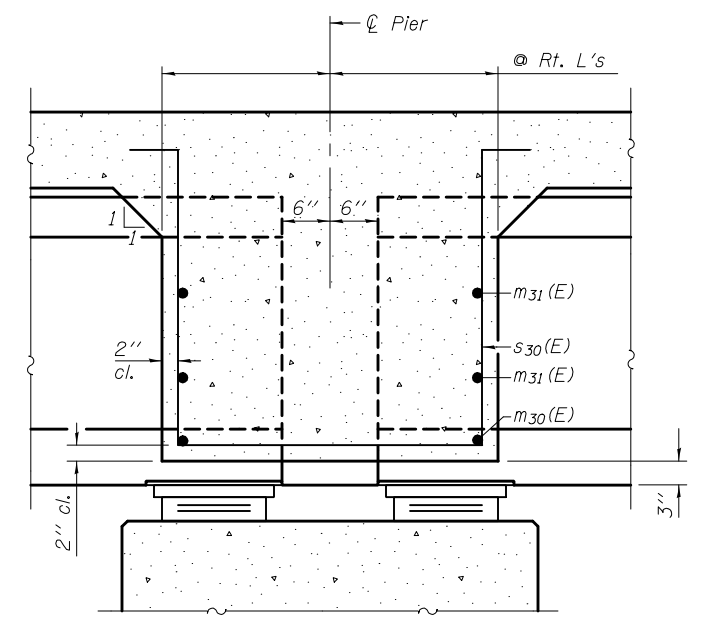
**STATE OF ILLINOIS
 DEPARTMENT OF TRANSPORTATION**

**DIAPHRAGM DETAILS
 STRUCTURE NO.**

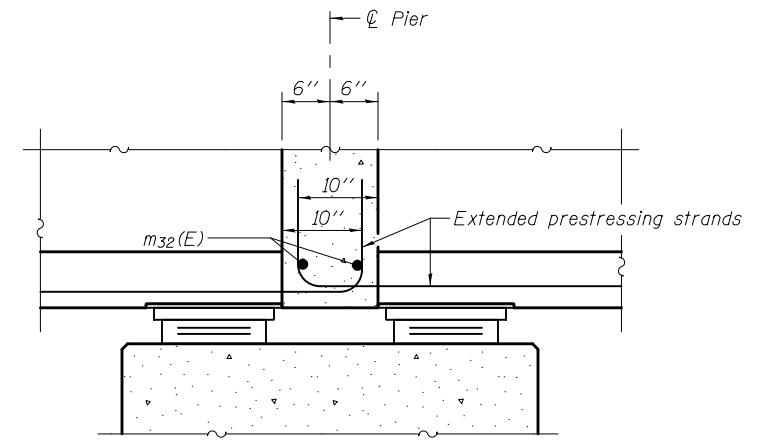
F.A. RTE.	SECTION	COUNTY	TOTAL SHEETS	SHEET NO.
CONTRACT NO.				
ILLINOIS FED. AID PROJECT				



DIAPHRAGM AT PIER



SECTION A-A



SECTION B-B

Notes:
 Reinforcement bars in diaphragm are billed with superstructure on sheet of .
 Concrete in diaphragm is included with Concrete Superstructure on sheet of .
 For details of bar s30(E) see sheet of .
 The s30(E) bars shall be placed parallel to the beams.
 Spacing for these bars shall be at right angles to the beams.
 Horizontal dimensions for Section A-A and Section B-B are along ϕ of beam unless otherwise noted.

DEP-IL36

07-15-16

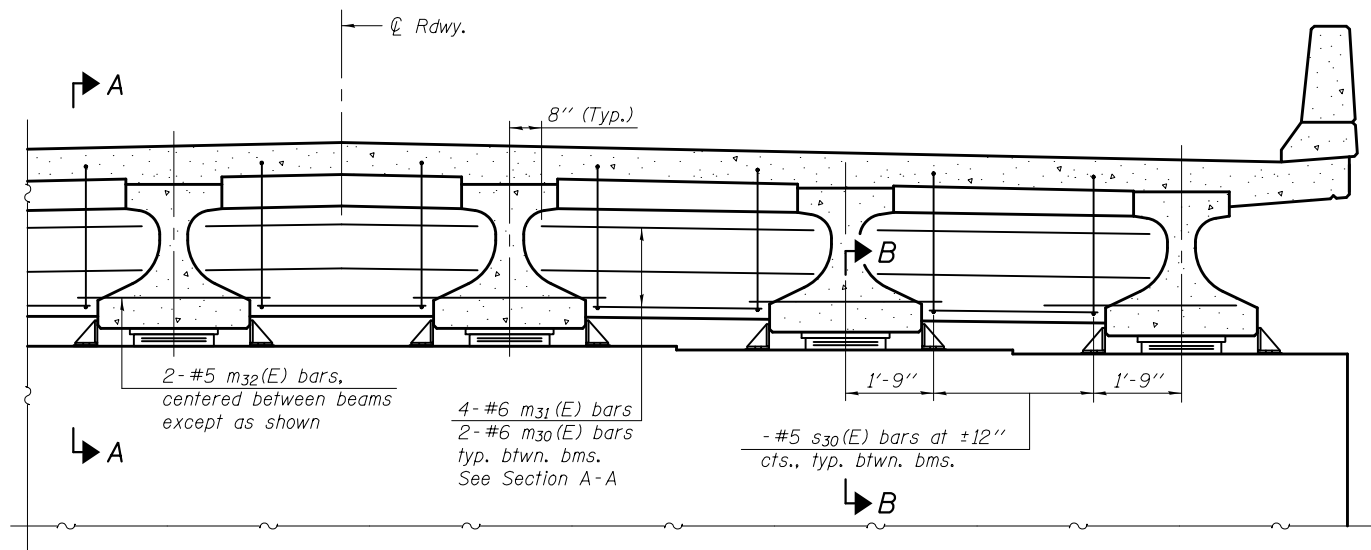
FILE NAME =	USER NAME =	DESIGNED -	REVISED -
		CHECKED -	REVISED -
		DRAWN -	REVISED -
		CHECKED -	REVISED -

**STATE OF ILLINOIS
 DEPARTMENT OF TRANSPORTATION**

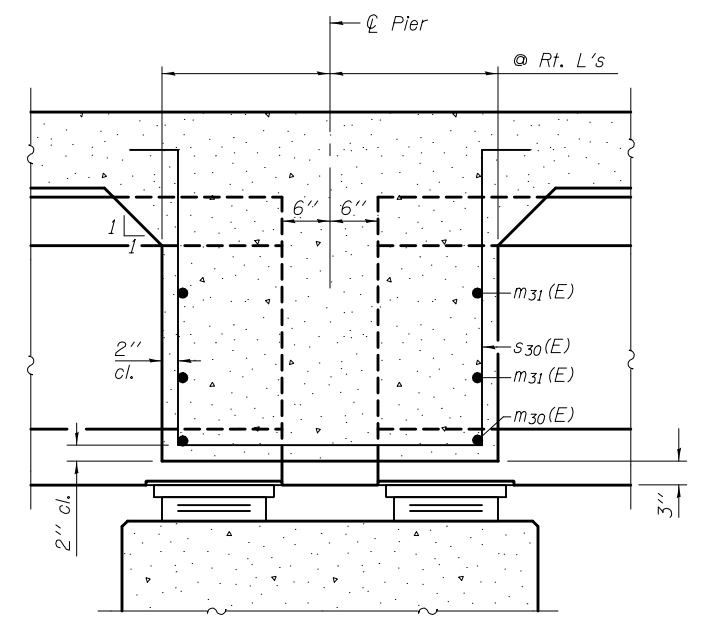
**DIAPHRAGM DETAILS
 STRUCTURE NO.**

F.A. RTE.	SECTION	COUNTY	TOTAL SHEETS	SHEET NO.
CONTRACT NO.				

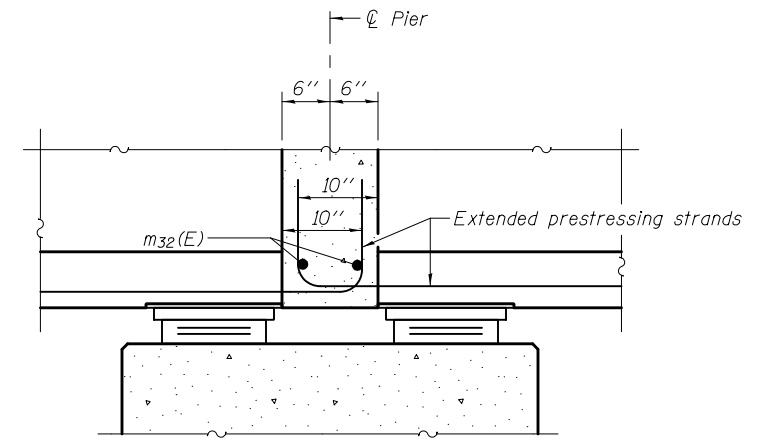
ILLINOIS FED. AID PROJECT



DIAPHRAGM AT PIER



SECTION A-A



SECTION B-B

Notes:
 Reinforcement bars in diaphragm are billed with superstructure on sheet of .
 Concrete in diaphragm is included with Concrete Superstructure on sheet of .
 For details of bar s30(E) see sheet of .
 The s30(E) bars shall be placed parallel to the beams.
 Spacing for these bars shall be at right angles to the beams.
 Horizontal dimensions for Section A-A and Section B-B are along ϕ of beam unless otherwise noted.

DEP-IL36N

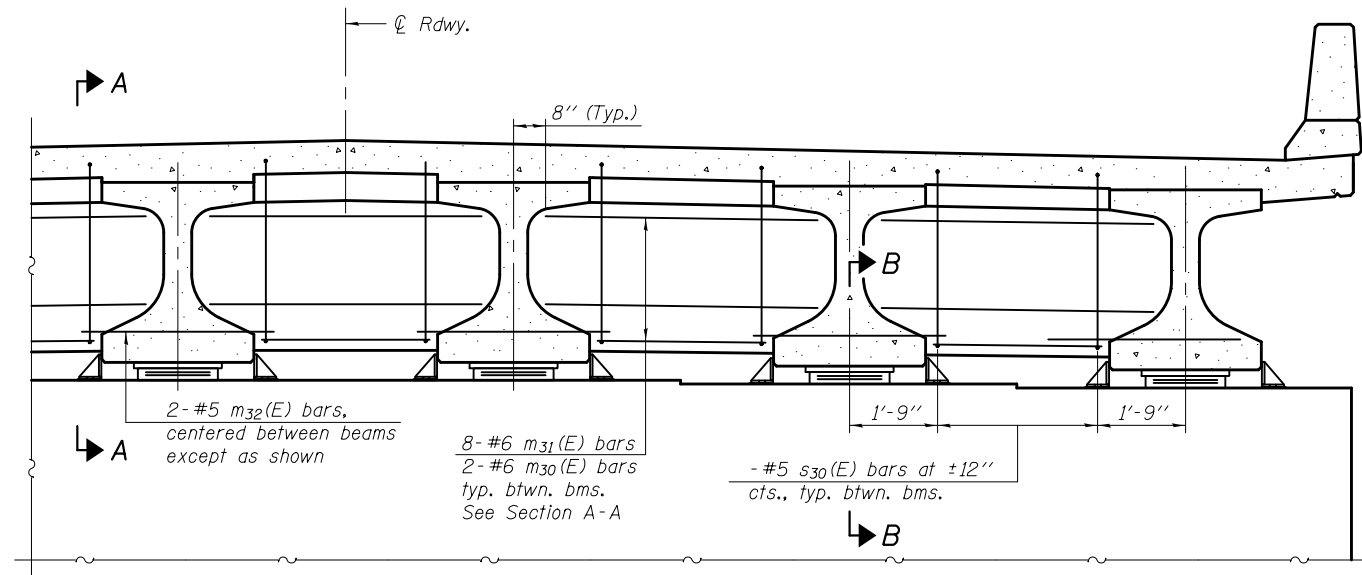
07-15-16

FILE NAME =	USER NAME =	DESIGNED -	REVISED -
		CHECKED -	REVISED -
		DRAWN -	REVISED -
		CHECKED -	REVISED -

**STATE OF ILLINOIS
 DEPARTMENT OF TRANSPORTATION**

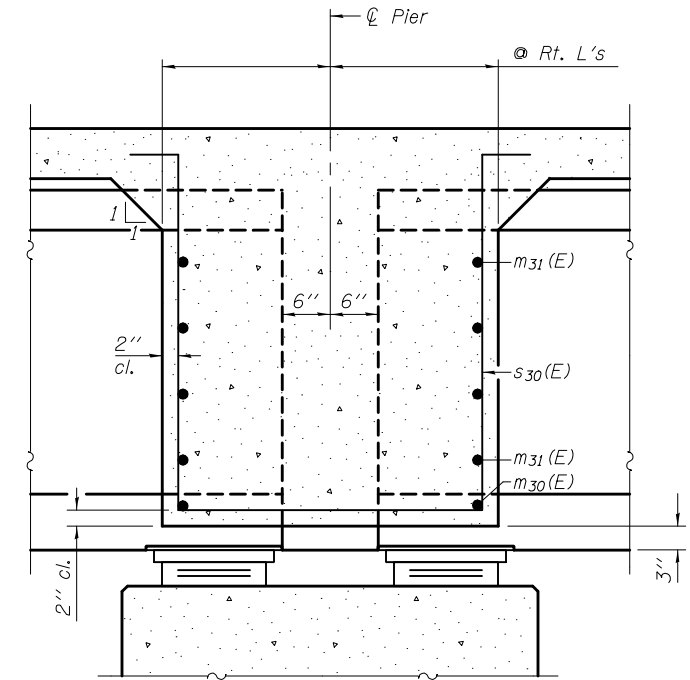
**DIAPHRAGM DETAILS
 STRUCTURE NO.**

F.A. RTE.	SECTION	COUNTY	TOTAL SHEETS	SHEET NO.
CONTRACT NO.				
ILLINOIS FED. AID PROJECT				

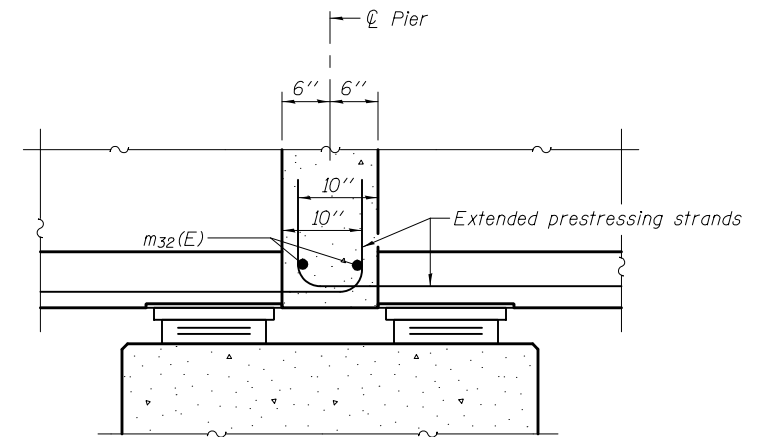


DIAPHRAGM AT PIER

Notes:
 Reinforcement bars in diaphragm are billed with superstructure on sheet of .
 Concrete in diaphragm is included with Concrete Superstructure on sheet of .
 For details of bar s30(E) see sheet of .
 The s30(E) bars shall be placed parallel to the beams.
 Spacing for these bars shall be at right angles to the beams.
 Horizontal dimensions for Section A-A and Section B-B are along ϕ of beam unless otherwise noted.



SECTION A-A



SECTION B-B

DEP-IL4554

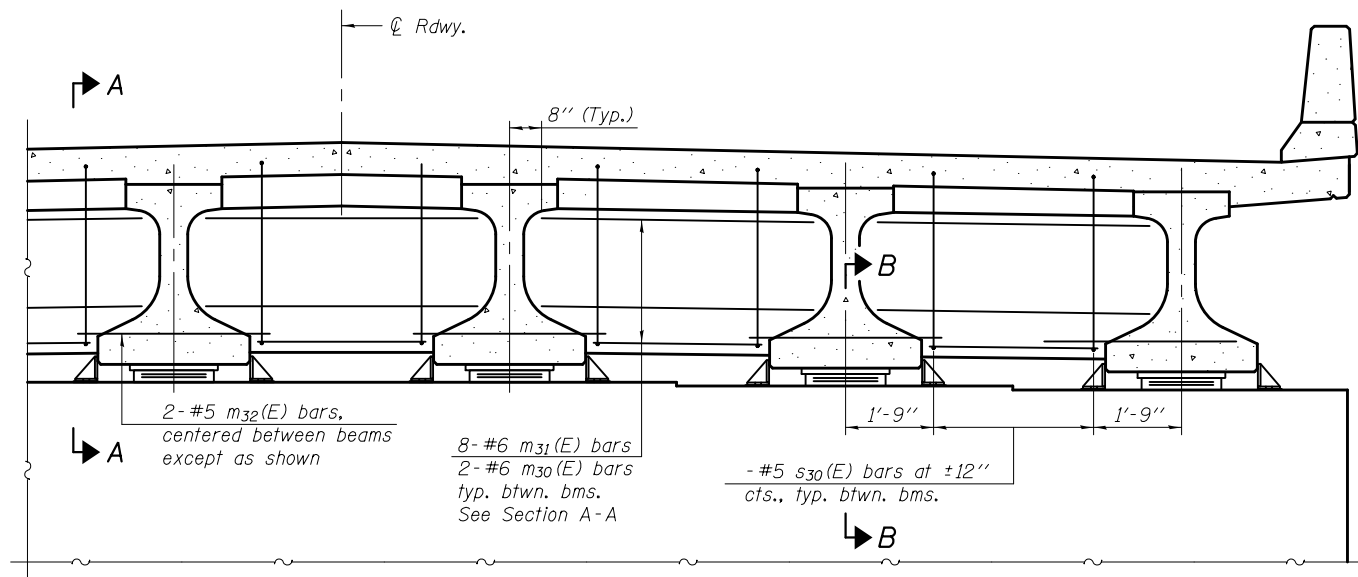
07-15-16

FILE NAME =	USER NAME =	DESIGNED -	REVISED -
		CHECKED -	REVISED -
		DRAWN -	REVISED -
		CHECKED -	REVISED -

**STATE OF ILLINOIS
 DEPARTMENT OF TRANSPORTATION**

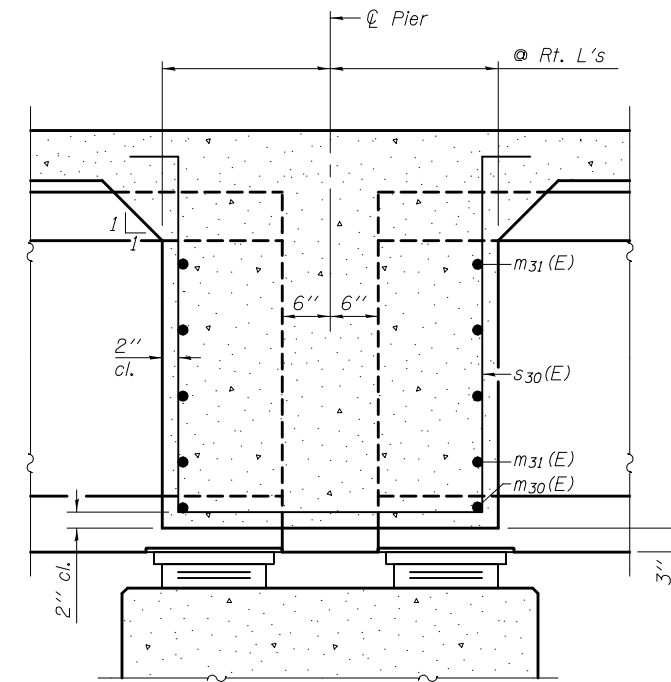
**DIAPHRAGM DETAILS
 STRUCTURE NO.**

F.A. RTE.	SECTION	COUNTY	TOTAL SHEETS	SHEET NO.
CONTRACT NO.				
ILLINOIS FED. AID PROJECT				

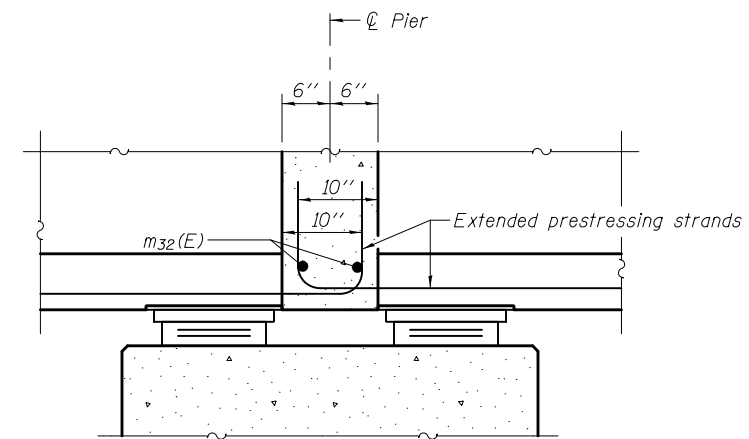


DIAPHRAGM AT PIER

Notes:
 Reinforcement bars in diaphragm are billed with superstructure on sheet of .
 Concrete in diaphragm is included with Concrete Superstructure on sheet of .
 For details of bar s₃₀(E) see sheet of .
 The s₃₀(E) bars shall be placed parallel to the beams.
 Spacing for these bars shall be at right angles to the beams.
 Horizontal dimensions for Section A-A and Section B-B are along ϕ of beam unless otherwise noted.



SECTION A-A



SECTION B-B

DEP-IL4554N

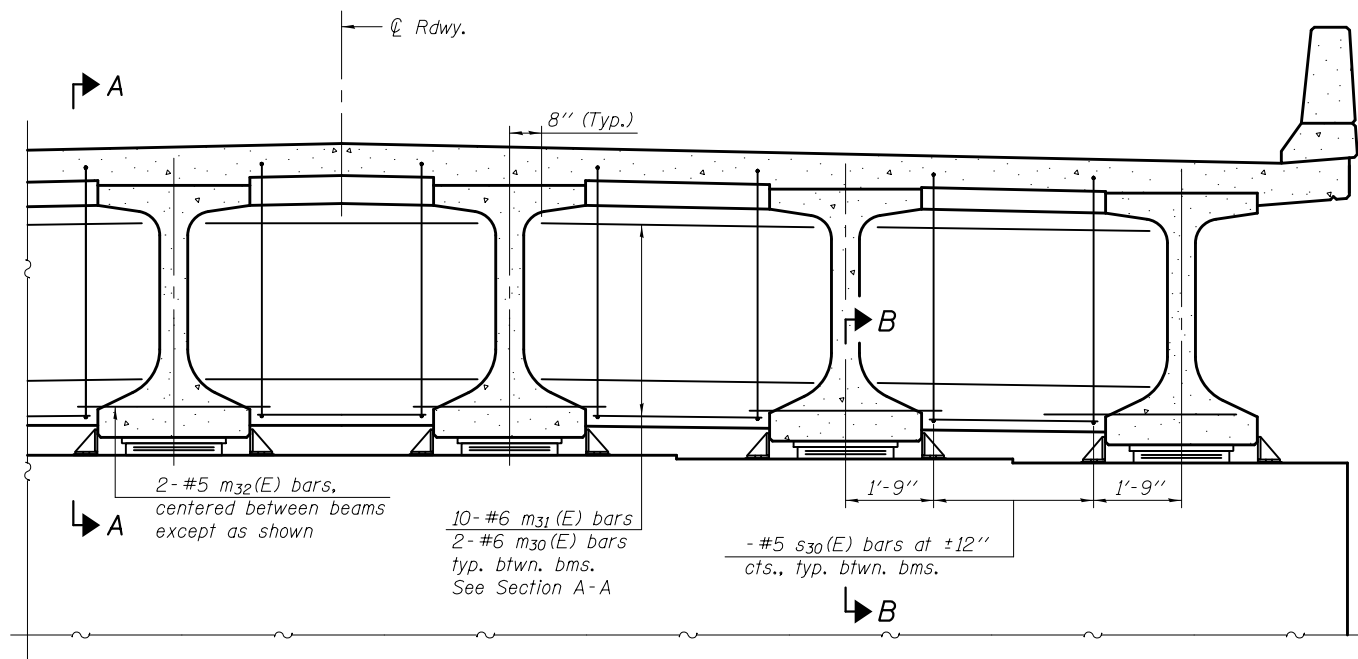
07-15-16

FILE NAME =	USER NAME =	DESIGNED -	REVISED -
		CHECKED -	REVISED -
		DRAWN -	REVISED -
		CHECKED -	REVISED -

**STATE OF ILLINOIS
DEPARTMENT OF TRANSPORTATION**

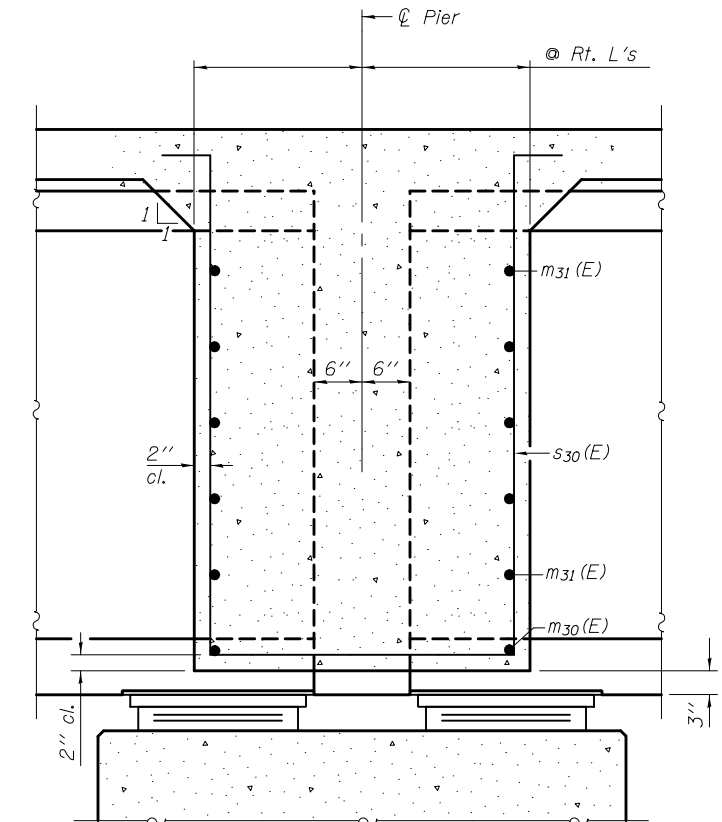
**DIAPHRAGM DETAILS
STRUCTURE NO.**

F.A. RTE.	SECTION	COUNTY	TOTAL SHEETS	SHEET NO.
CONTRACT NO.				
ILLINOIS FED. AID PROJECT				

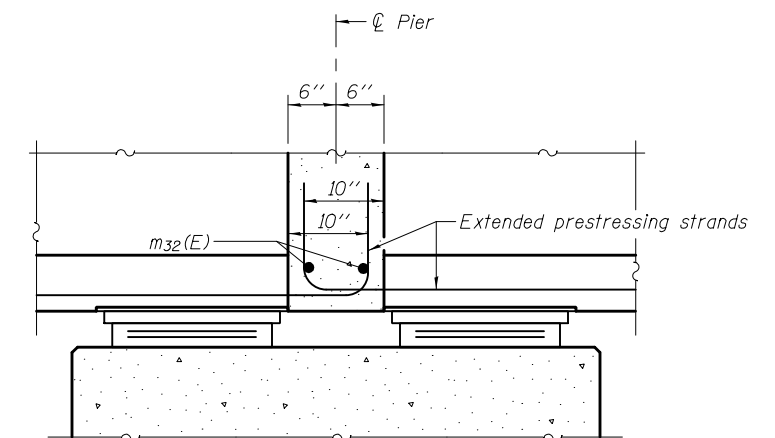


DIAPHRAGM AT PIER

Notes:
 Reinforcement bars in diaphragm are billed with superstructure on sheet of .
 Concrete in diaphragm is included with Concrete Superstructure on sheet of .
 For details of bar s30(E) see sheet of .
 The s30(E) bars shall be placed parallel to the beams.
 Spacing for these bars shall be at right angles to the beams.
 Horizontal dimensions for Section A-A and Section B-B are along ϕ of beam unless otherwise noted.



SECTION A-A



SECTION B-B

DEP-IL6372

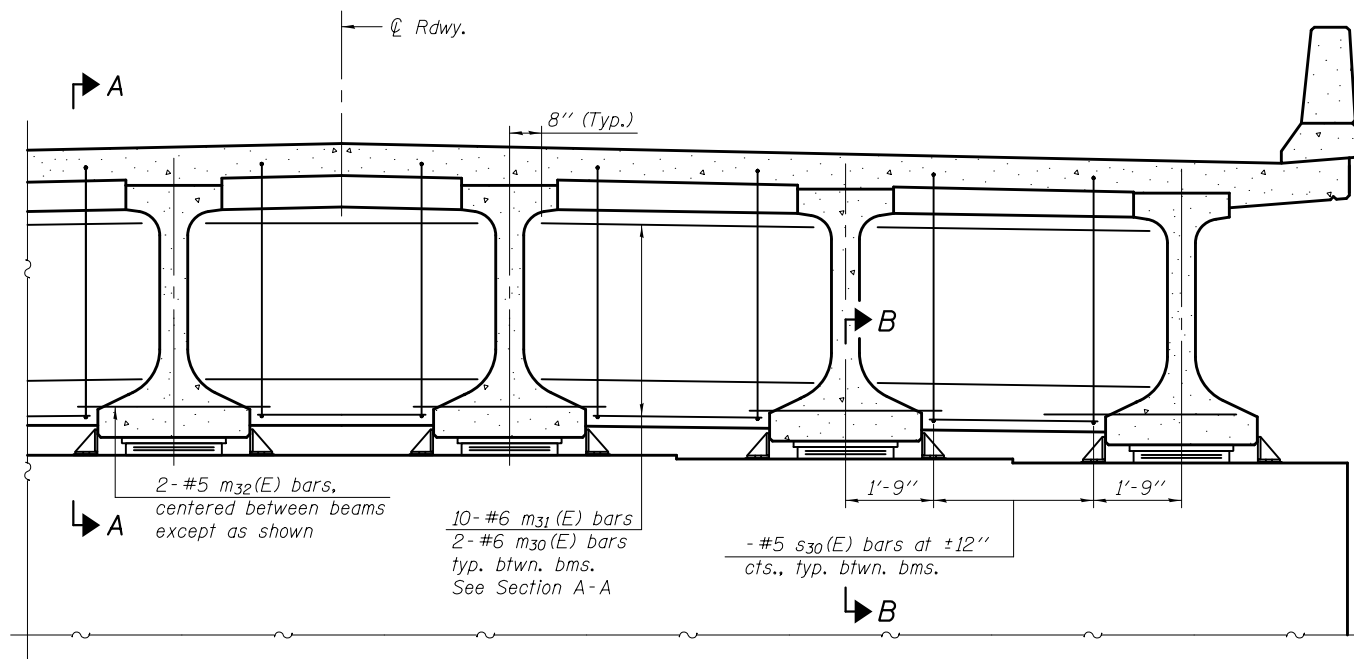
07-15-16

FILE NAME =	USER NAME =	DESIGNED -	REVISED -
		CHECKED -	REVISED -
		DRAWN -	REVISED -
		CHECKED -	REVISED -

**STATE OF ILLINOIS
 DEPARTMENT OF TRANSPORTATION**

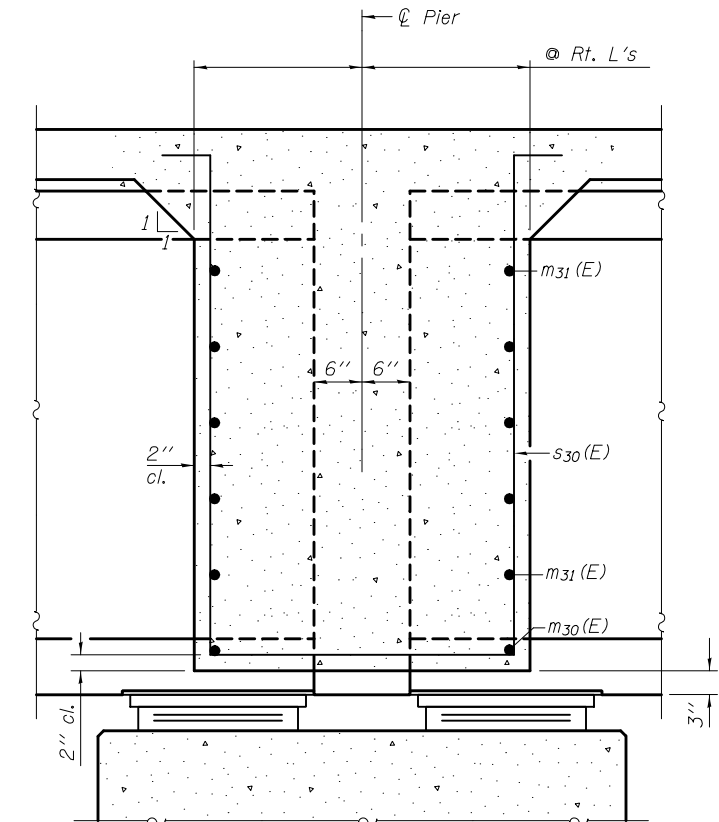
**DIAPHRAGM DETAILS
 STRUCTURE NO.**

F.A. RTE.	SECTION	COUNTY	TOTAL SHEETS	SHEET NO.
				CONTRACT NO.
ILLINOIS FED. AID PROJECT				

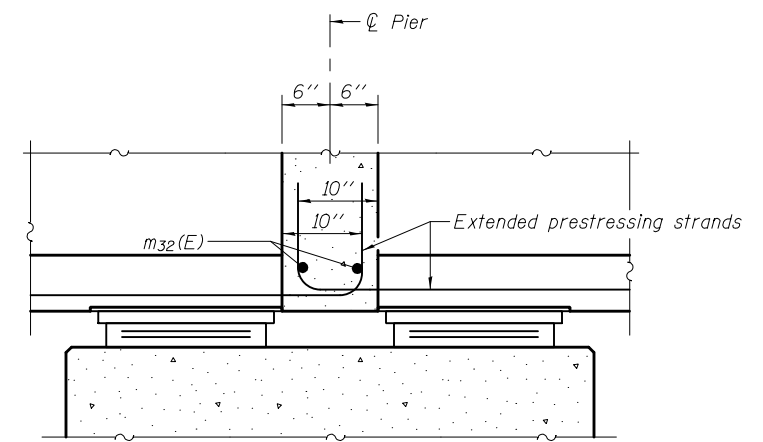


DIAPHRAGM AT PIER

Notes:
 Reinforcement bars in diaphragm are billed with superstructure on sheet of .
 Concrete in diaphragm is included with Concrete Superstructure on sheet of .
 For details of bar s₃₀(E) see sheet of .
 The s₃₀(E) bars shall be placed parallel to the beams.
 Spacing for these bars shall be at right angles to the beams.
 Horizontal dimensions for Section A-A and Section B-B are along ϕ of beam unless otherwise noted.



SECTION A-A



SECTION B-B

DEP-IL6372N

07-15-16

FILE NAME =	USER NAME =	DESIGNED -	REVISED -
		CHECKED -	REVISED -
		DRAWN -	REVISED -
		CHECKED -	REVISED -

**STATE OF ILLINOIS
DEPARTMENT OF TRANSPORTATION**

**DIAPHRAGM DETAILS
STRUCTURE NO.**

F.A. RTE.	SECTION	COUNTY	TOTAL SHEETS	SHEET NO.
CONTRACT NO.				
ILLINOIS FED. AID PROJECT				