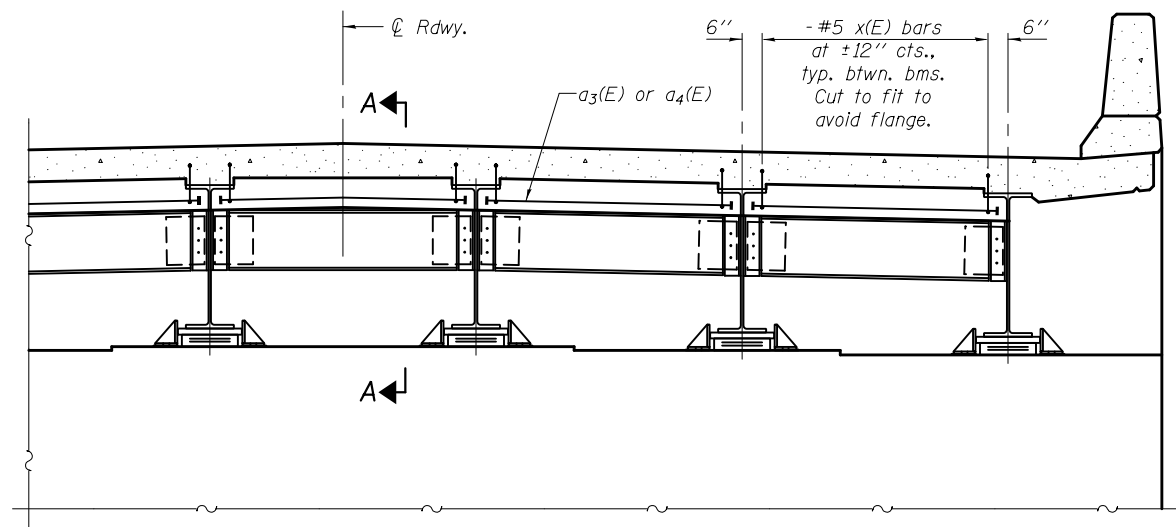
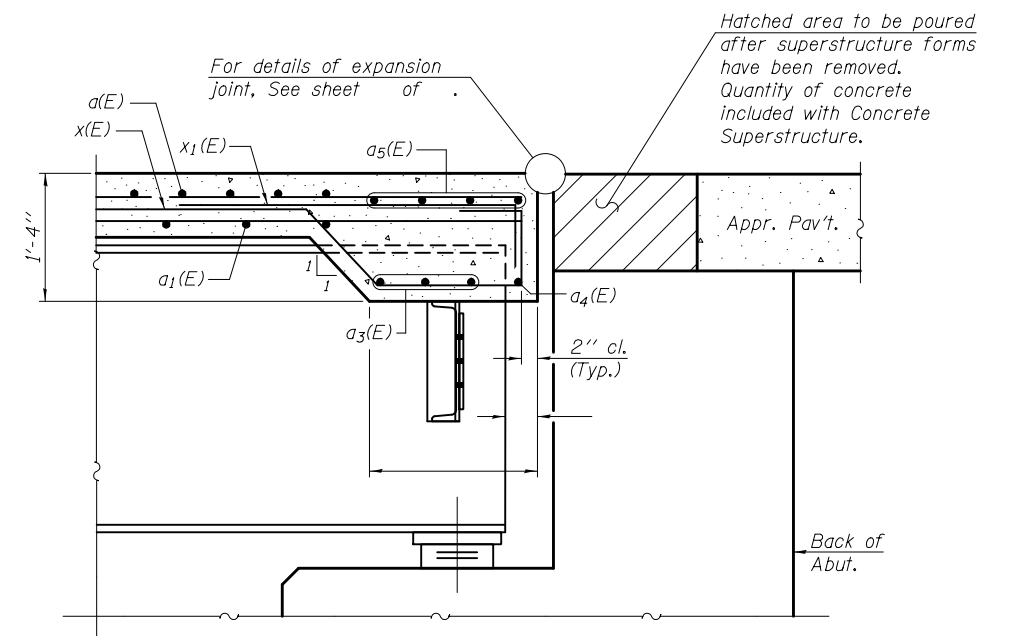


CELL / MODEL NAME	DESCRIPTION	DATE
DEA-SB2448-0	Diaphragm Expansion Abutment; Steel beam 24-48 inch beam depth; No skew	11/22/2016
DEA-SB2448-LR	Diaphragm Expansion Abutment; Steel beam 24-48 inch beam depth; L/R skew	11/22/2016
DEA-SB-Greater than 48-0	Diaphragm Expansion Abutment; Steel beam Greater than 48 inch beam depth; No skew	11/22/2016
DEA-SB-Greater than 48-LR	Diaphragm Expansion Abutment; Steel beam Greater than 48 inch beam depth; L/R skew	11/22/2016



DIAPHRAGM AT ABUTMENT



SECTION A-A

Notes:
 Reinforcement bars in diaphragm are billed with superstructure on sheet of .
 Concrete in diaphragm is included with Concrete Superstructure on sheet of .
 For details of bars $x(E)$ and $x_1(E)$ see sheet of .

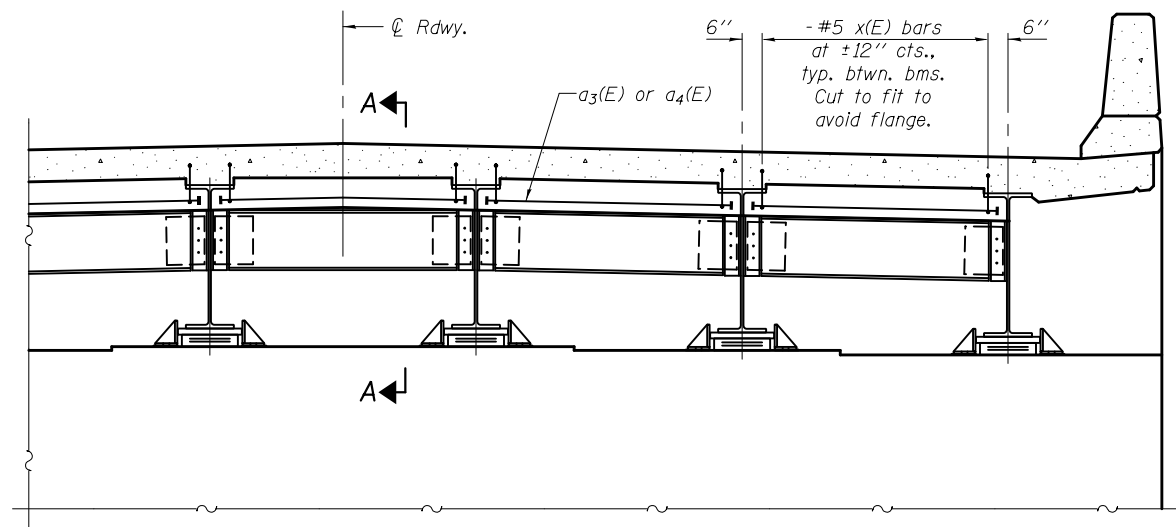
DEA-SB2448-0 11-22-2016

FILE NAME =	USER NAME =	DESIGNED -	REVISED -
		CHECKED -	REVISED -
		DRAWN -	REVISED -
		CHECKED -	REVISED -

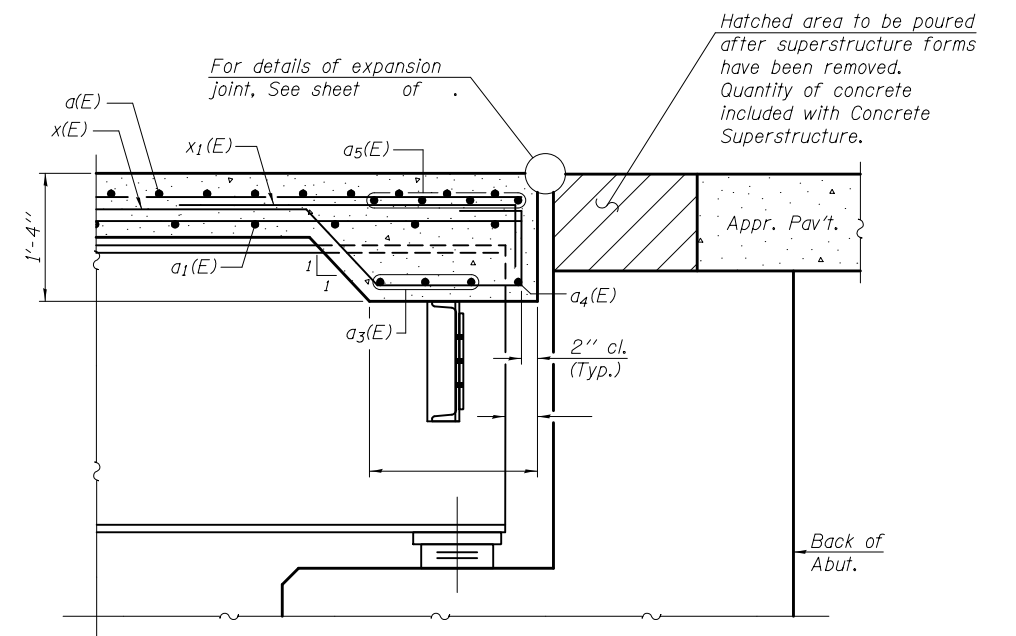
STATE OF ILLINOIS
 DEPARTMENT OF TRANSPORTATION

DIAPHRAGM DETAILS
 STRUCTURE NO.

F.A. RTE.	SECTION	COUNTY	TOTAL SHEETS	SHEET NO.
CONTRACT NO.				
ILLINOIS FED. AID PROJECT				



DIAPHRAGM AT ABUTMENT



SECTION A-A
(at Rt. L's)

Notes:
 Reinforcement bars in diaphragm are billed with superstructure on sheet of . . .
 Concrete in diaphragm is included with Concrete Superstructure on sheet of . . .
 The x(E) bars shall be placed parallel to the beams. Spacing for these bars shall be at right angles to the beams.
 For details of bars x(E) and x₁(E) see sheet of . . .

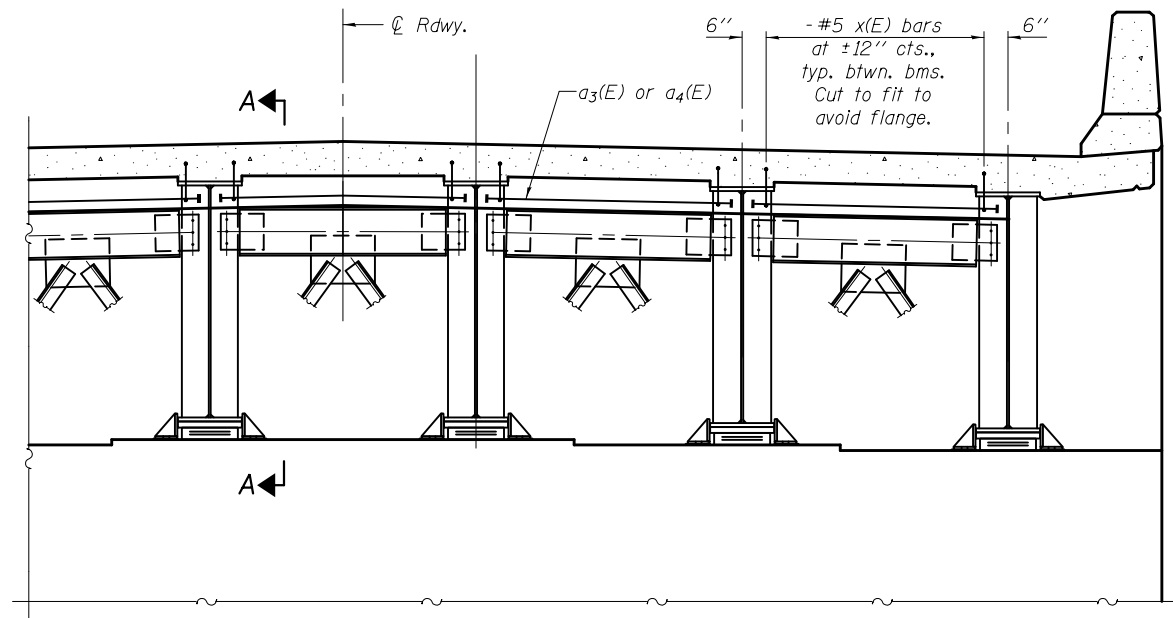
DEA-SB2448-LR 11-22-2016

FILE NAME =	USER NAME =	DESIGNED -	REVISED -
		CHECKED -	REVISED -
		DRAWN -	REVISED -
		CHECKED -	REVISED -

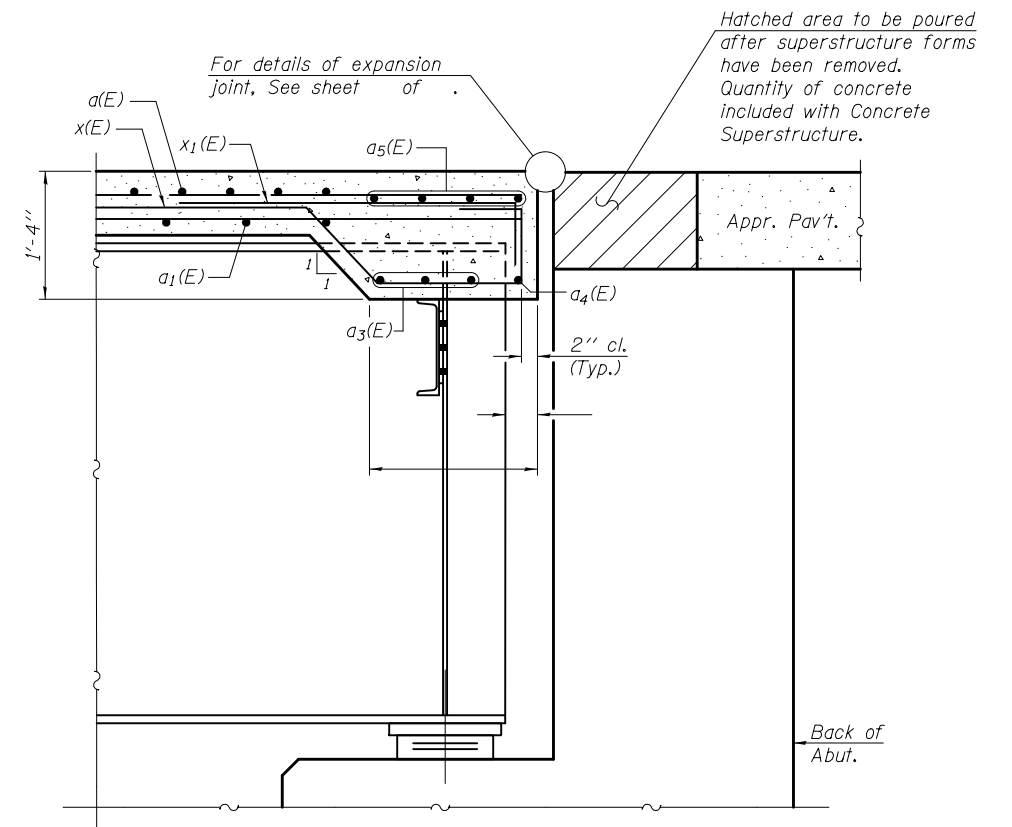
STATE OF ILLINOIS
DEPARTMENT OF TRANSPORTATION

DIAPHRAGM DETAILS
STRUCTURE NO.

F.A. RTE.	SECTION	COUNTY	TOTAL SHEETS	SHEET NO.
CONTRACT NO.				
ILLINOIS FED. AID PROJECT				



DIAPHRAGM AT ABUTMENT
 (Full cross frame not shown for clarity)



SECTION A-A

Notes:
 Reinforcement bars in diaphragm are billed with superstructure on sheet of .
 Concrete in diaphragm is included with Concrete Superstructure on sheet of .
 For details of bars $x(E)$ and $x_1(E)$ see sheet of .

DEA-SB48-0

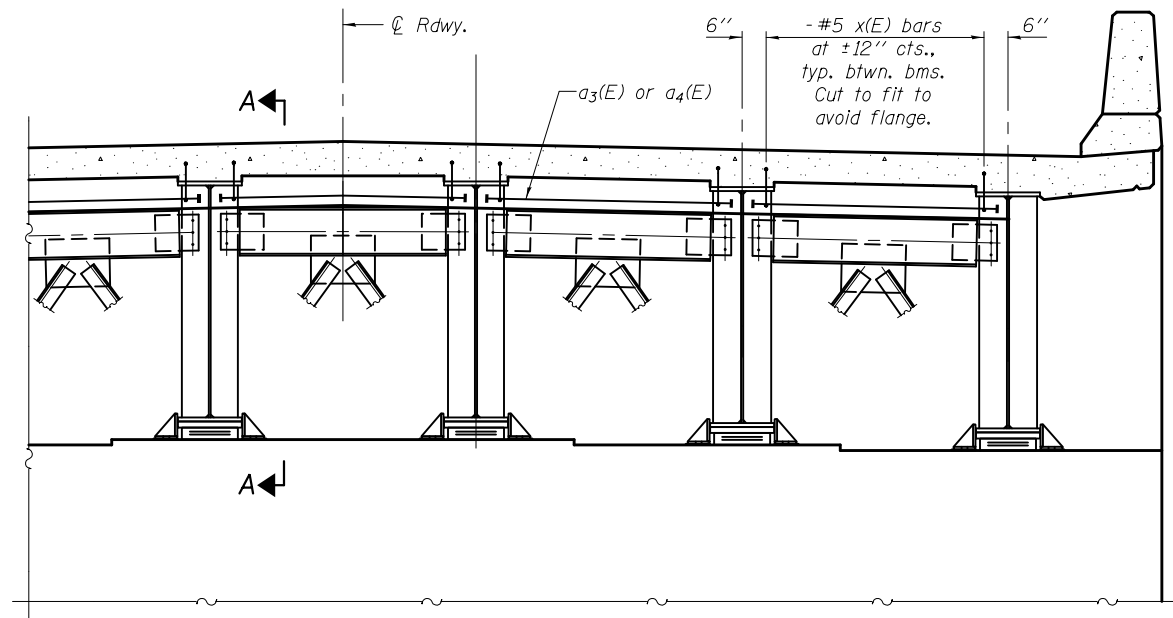
11-22-2016

FILE NAME =	USER NAME =	DESIGNED -	REVISED -
		CHECKED -	REVISED -
	PLOT SCALE =	DRAWN -	REVISED -
	PLOT DATE =	CHECKED -	REVISED -

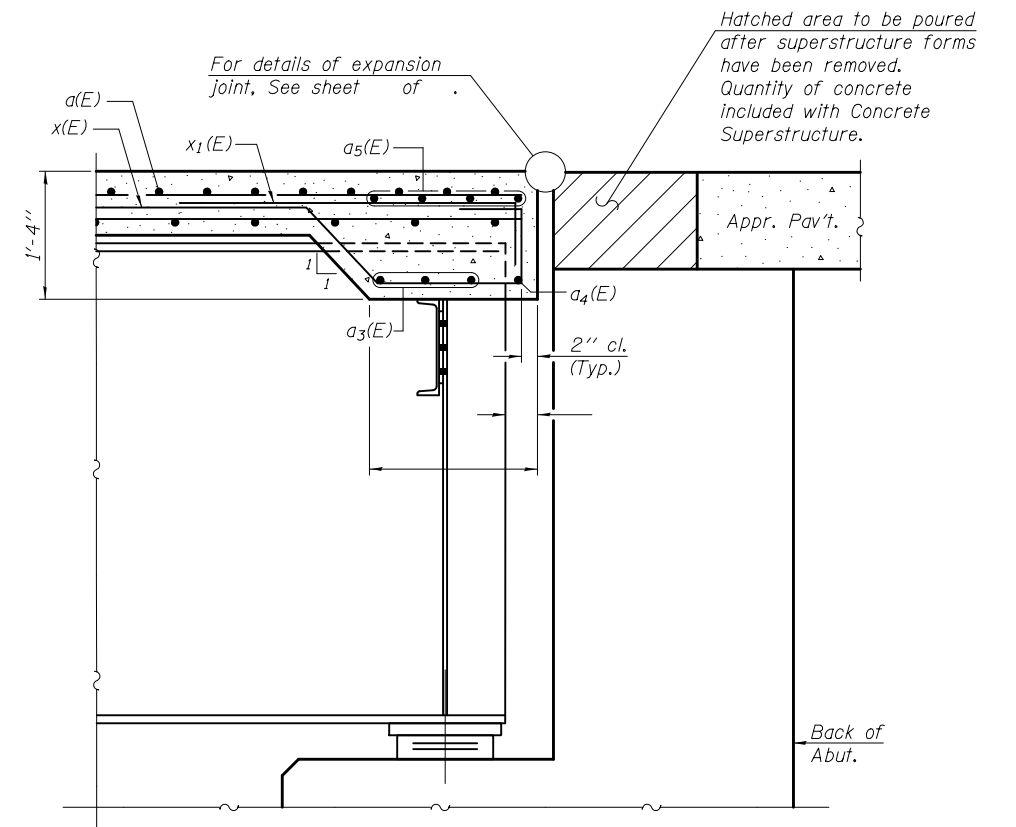
**STATE OF ILLINOIS
 DEPARTMENT OF TRANSPORTATION**

**DIAPHRAGM DETAILS
 STRUCTURE NO.**

F.A. RTE.	SECTION	COUNTY	TOTAL SHEETS	SHEET NO.
CONTRACT NO.				
ILLINOIS FED. AID PROJECT				



DIAPHRAGM AT ABUTMENT
(Full cross frame not shown for clarity)



SECTION A-A
(at Rt. L's)

Notes:
 Reinforcement bars in diaphragm are billed with superstructure on sheet of .
 Concrete in diaphragm is included with Concrete Superstructure on sheet of .
 The x(E) bars shall be placed parallel to the beams. Spacing for these bars shall be at right angles to the beams.
 For details of bars x(E) and x₁(E) see sheet of .

DEA-SB>48-LR 11-22-2016

FILE NAME =	USER NAME =	DESIGNED -	REVISED -
		CHECKED -	REVISED -
		DRAWN -	REVISED -
		CHECKED -	REVISED -

STATE OF ILLINOIS
DEPARTMENT OF TRANSPORTATION

DIAPHRAGM DETAILS
STRUCTURE NO.

F.A. RTE.	SECTION	COUNTY	TOTAL SHEETS	SHEET NO.
CONTRACT NO.				
ILLINOIS FED. AID PROJECT				