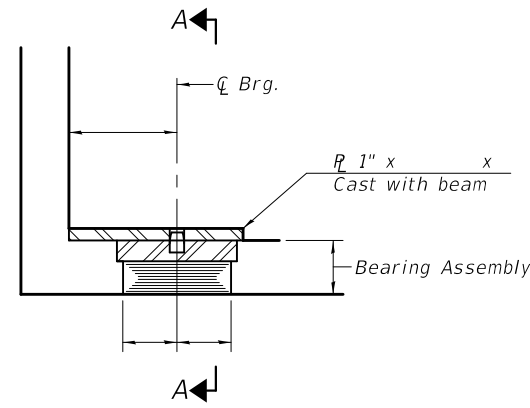
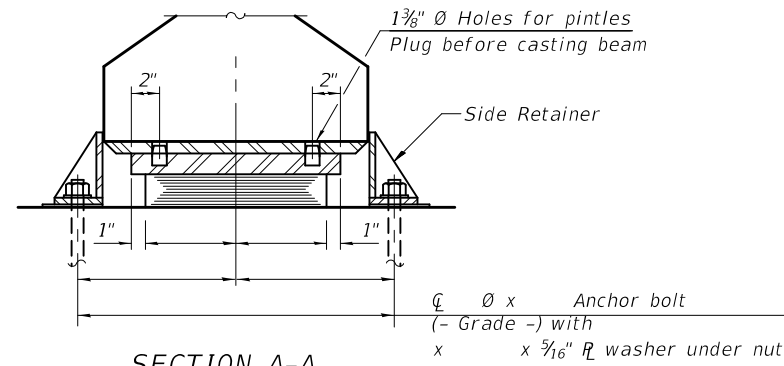


| <b>CELL / MODEL NAME</b> | <b>DESCRIPTION</b>           | <b>DATE</b> |
|--------------------------|------------------------------|-------------|
| PI-2E-1                  | Type I elastomeric bearing   | 2/17/2017   |
| PI-2E-2                  | Type II elastomeric bearing  | 2/17/2017   |
| PI-2E-3                  | Type III elastomeric bearing | 2/17/2017   |
| PI-2FB                   | Fixed bearing                | 2/17/2017   |

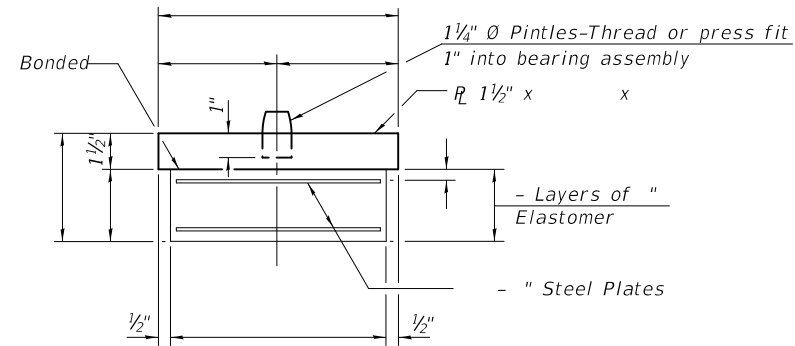


SECTION AT ABUT.

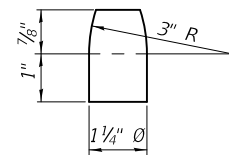


SECTION A-A

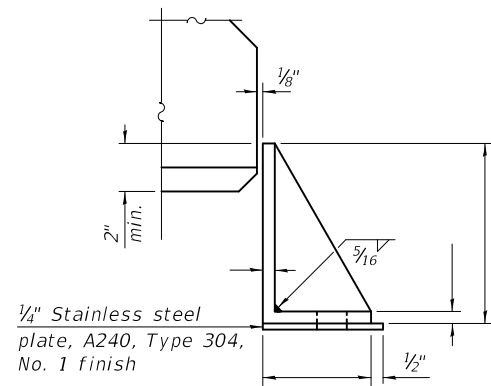
TYPE I ELASTOMERIC EXP. BRG.



BEARING ASSEMBLY



PINTLE



SIDE RETAINER

Equivalent rolled angle with stiffeners will be allowed in lieu of welded plates.

Notes:  
 Anchor bolts shall be ASTM F1554 all-thread (or an Engineer-approved alternate material) of the grade(s) and diameter(s) specified. The corresponding specified grade of AASHTO M314 anchor bolts may be used in lieu of ASTM F1554.  
 Side retainers and other steel members required for the bearing assembly shall be included in the cost of Elastomeric Bearing Assembly, Type I.  
 See sheet of for additional details of plate cast with beam.  
 Beams shall be braced for stability during erection and remain braced until deck is poured and cured.  
 Anchor bolts and side retainers at all supports shall be installed as each member is erected unless an equivalent temporary means of lateral restraint is used.

BILL OF MATERIAL

| Item                                 | Unit | Total |
|--------------------------------------|------|-------|
| Elastomeric Bearing Assembly, Type I | Each |       |
| Anchor Bolts                         | Each |       |

PI-2E-1

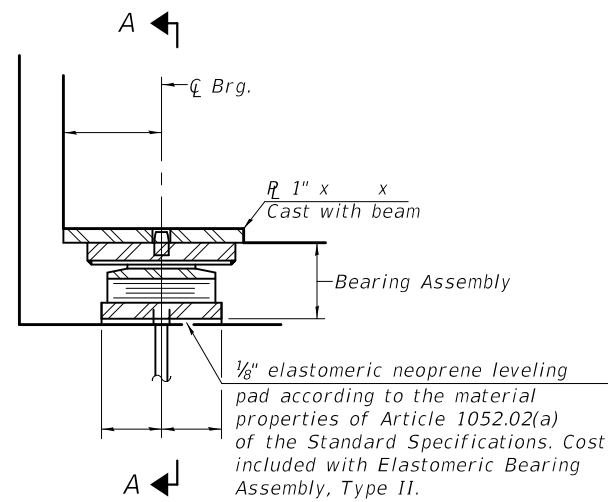
2-17-2017

|             |             |            |           |
|-------------|-------------|------------|-----------|
| FILE NAME = | USER NAME = | DESIGNED - | REVISED - |
|             |             | CHECKED -  | REVISED - |
|             |             | DRAWN -    | REVISED - |
|             |             | CHECKED -  | REVISED - |

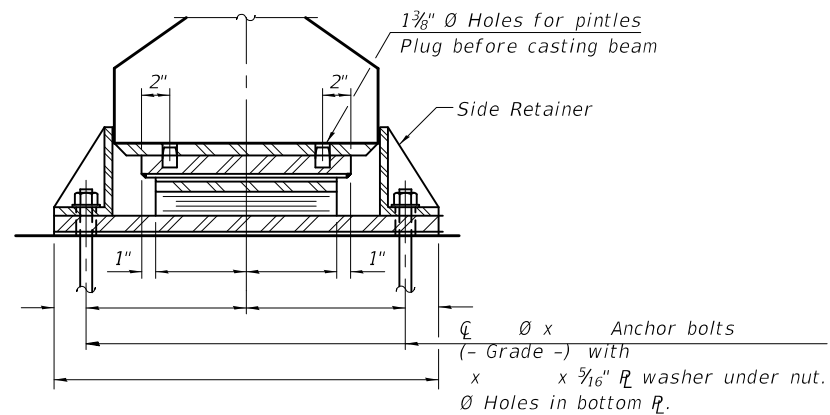
STATE OF ILLINOIS  
 DEPARTMENT OF TRANSPORTATION

BEARING DETAILS  
 STRUCTURE NO.

|                           |         |        |              |           |
|---------------------------|---------|--------|--------------|-----------|
| F.A. RTE.                 | SECTION | COUNTY | TOTAL SHEETS | SHEET NO. |
|                           |         |        |              |           |
| CONTRACT NO.              |         |        |              |           |
| ILLINOIS FED. AID PROJECT |         |        |              |           |

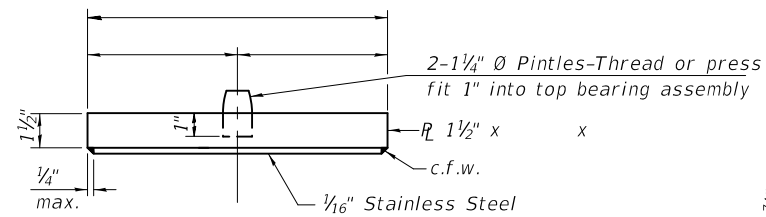


SECTION AT ABUT.

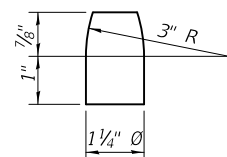


SECTION A-A

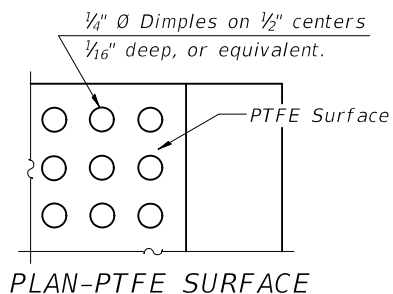
TYPE II ELASTOMERIC EXP. BRG.



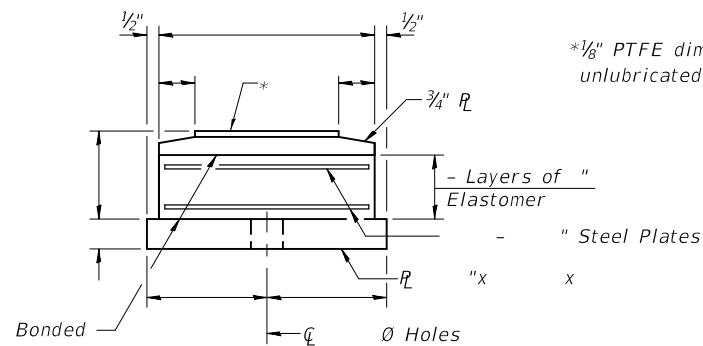
TOP BEARING ASSEMBLY



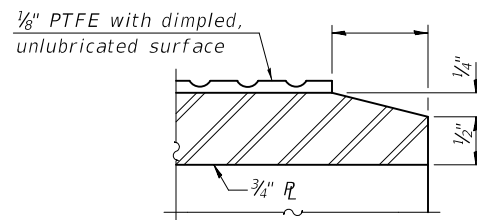
PINTLE



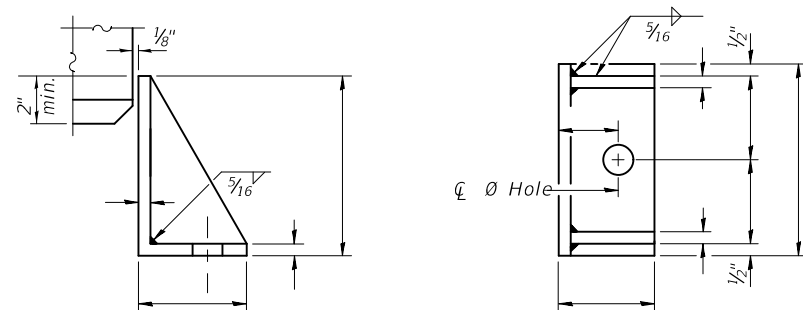
PLAN-PTFE SURFACE



BOTTOM BEARING ASSEMBLY

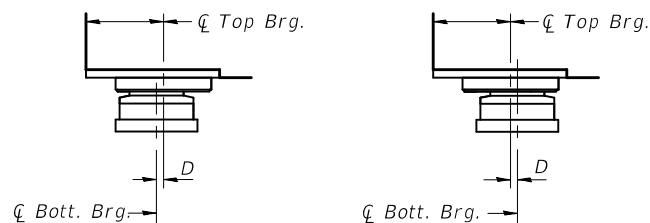


SECTION THRU PTFE



SIDE RETAINER

Equivalent rolled angle with stiffeners will be allowed in lieu of welded plates.



BELOW 50°F.

$D = \frac{1}{8}$ " per each 100' of expansion for every 15° temp. change from the normal temp. of 50°F.

ABOVE 50°F.

EXPANSION BEARING ORIENTATION

The above diagrams are for informational purposes only to show the amount of expected offset "D" for the current temperature in the field.

Notes:

Anchor bolts shall be ASTM F1554 all-thread (or an Engineer-approved alternate material) of the grade(s) and diameter(s) specified. The corresponding specified grade of AASHTO M314 anchor bolts may be used in lieu of ASTM F1554.

Side retainers and other steel members required for the bearing assembly shall be included in the cost of Elastomeric Bearing Assembly, Type II.

The  $\frac{1}{8}$ " PTFE sheet shall be bonded directly to the top steel plate with a two-component, medium viscosity epoxy resin, conforming to the requirements of the Federal Specification MMM-A-134, Type I. The bond agent shall be applied on the full area of the contact surfaces.

Bonding of  $\frac{1}{8}$ " PTFE sheet during vulcanizing process will be permitted provided the process and method of adjusting assembly height is approved by the Engineer.

See sheet of for additional details of plate cast with beam.

Beams shall be braced for stability during erection and remain braced until deck is poured and cured.

Anchor bolts and side retainers at all supports shall be installed as each member is erected unless an equivalent temporary means of lateral restraint is used.

BILL OF MATERIAL

| Item                                  | Unit | Total |
|---------------------------------------|------|-------|
| Elastomeric Bearing Assembly, Type II | Each |       |
| Anchor Bolts                          | Each |       |

PI-2E-2

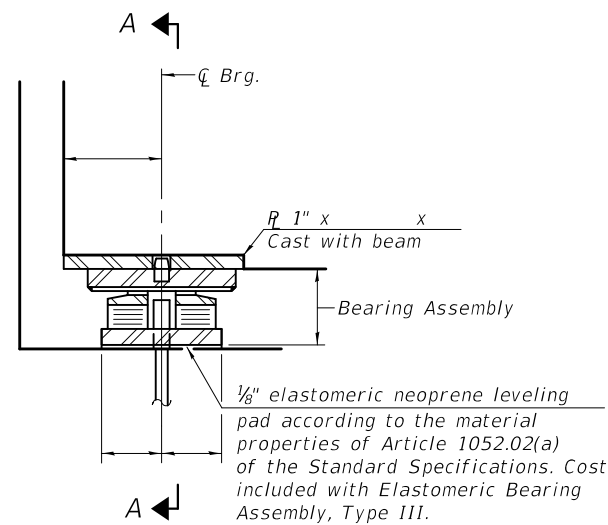
2-17-2017

|             |              |            |           |
|-------------|--------------|------------|-----------|
| FILE NAME = | USER NAME =  | DESIGNED - | REVISED - |
|             |              | CHECKED -  | REVISED - |
|             | PLOT SCALE = | DRAWN -    | REVISED - |
|             | PLOT DATE =  | CHECKED -  | REVISED - |

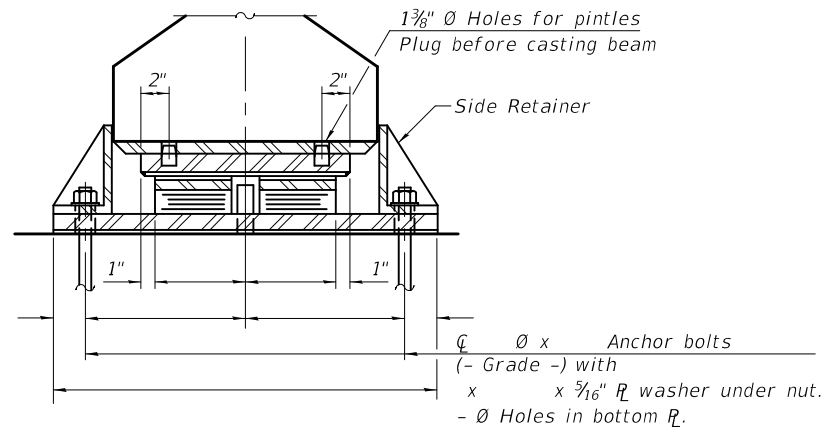
STATE OF ILLINOIS  
DEPARTMENT OF TRANSPORTATION

BEARING DETAILS  
STRUCTURE NO.

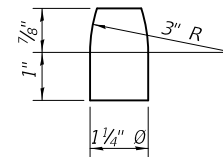
|                           |         |        |              |           |
|---------------------------|---------|--------|--------------|-----------|
| F.A. RTE.                 | SECTION | COUNTY | TOTAL SHEETS | SHEET NO. |
|                           |         |        |              |           |
| CONTRACT NO.              |         |        |              |           |
| ILLINOIS FED. AID PROJECT |         |        |              |           |



SECTION AT ABUT.

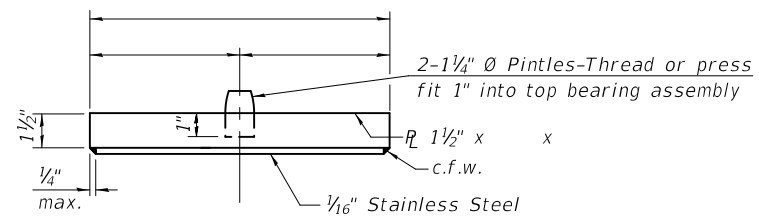


SECTION A-A

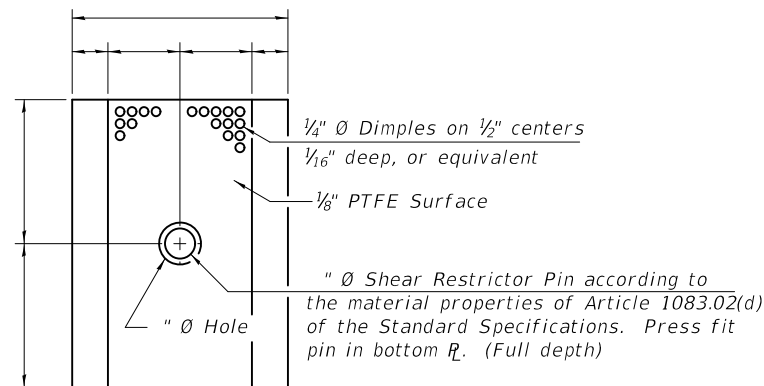


PINTLE

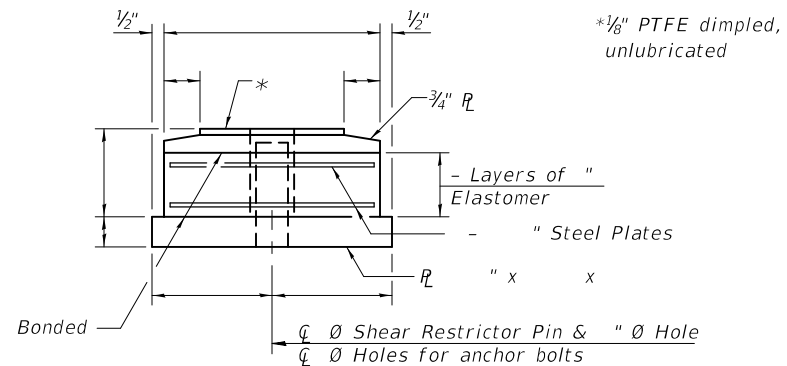
TYPE III ELASTOMERIC EXP. BRG.



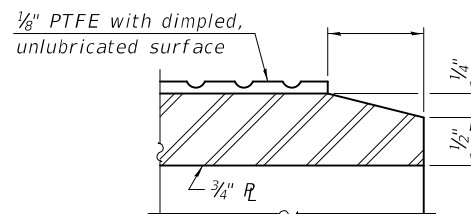
TOP BEARING ASSEMBLY



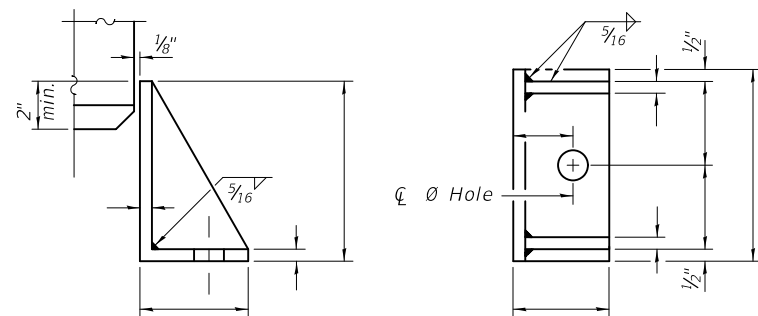
PLAN-PTFE ELASTOMERIC BRG.



BOTTOM BEARING ASSEMBLY

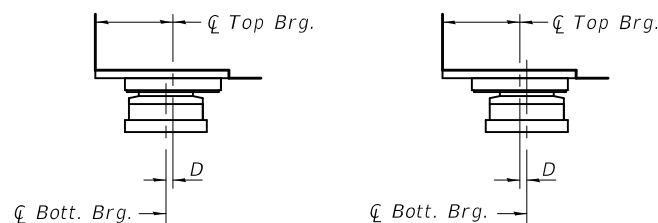


SECTION THRU PTFE



SIDE RETAINER

Equivalent rolled angle with stiffeners will be allowed in lieu of welded plates.



BELOW 50°F. ABOVE 50°F.  
D = 1/8" per each 100' of expansion for every 15° temp. change from the normal temp. of 50°F.

EXPANSION BEARING ORIENTATION

The above diagrams are for informational purposes only to show the amount of expected offset "D" for the current temperature in the field.

Notes:  
Anchor bolts shall be ASTM F1554 all-thread (or an Engineer-approved alternate material) of the grade(s) and diameter(s) specified. The corresponding specified grade of AASHTO M314 anchor bolts may be used in lieu of ASTM F1554.  
Side retainers and other steel members required for the bearing assembly shall be included in the cost of Elastomeric Bearing Assembly, Type III.  
The 1/8" PTFE sheet shall be bonded directly to the top steel plate with a two-component, medium viscosity epoxy resin, conforming to the requirements of the Federal Specification MMM-A-134, Type I. The bond agent shall be applied on the full area of the contact surfaces.  
Bonding of 1/8" PTFE sheet during vulcanizing process will be permitted provided the process and method of adjusting assembly height is approved by the Engineer.  
See sheet of for additional details of plate cast with beam.  
Beams shall be braced for stability during erection and remain braced until deck is poured and cured.  
Anchor bolts and side retainers at all supports shall be installed as each member is erected unless an equivalent temporary means of lateral restraint is used.

BILL OF MATERIAL

| Item                                   | Unit | Total |
|--|------|-------|
| Elastomeric Bearing Assembly, Type III | Each |       |
| Anchor Bolts                           | Each |       |

PI-2E-3

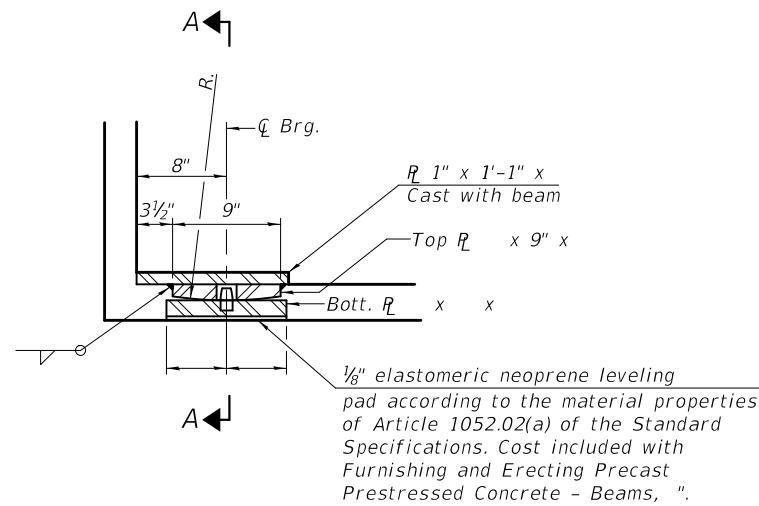
2-17-2017

|             |              |            |           |
|-------------|--------------|------------|-----------|
| FILE NAME = | USER NAME =  | DESIGNED - | REVISED - |
|             |              | CHECKED -  | REVISED - |
|             | PLOT SCALE = | DRAWN -    | REVISED - |
|             | PLOT DATE =  | CHECKED -  | REVISED - |

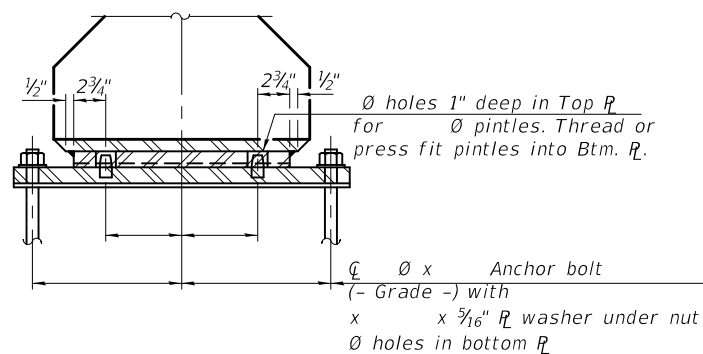
STATE OF ILLINOIS  
DEPARTMENT OF TRANSPORTATION

BEARING DETAILS  
STRUCTURE NO.

|                           |         |        |              |           |
|---------------------------|---------|--------|--------------|-----------|
| F.A. RTE.                 | SECTION | COUNTY | TOTAL SHEETS | SHEET NO. |
|                           |         |        |              |           |
| CONTRACT NO.              |         |        |              |           |
| ILLINOIS FED. AID PROJECT |         |        |              |           |

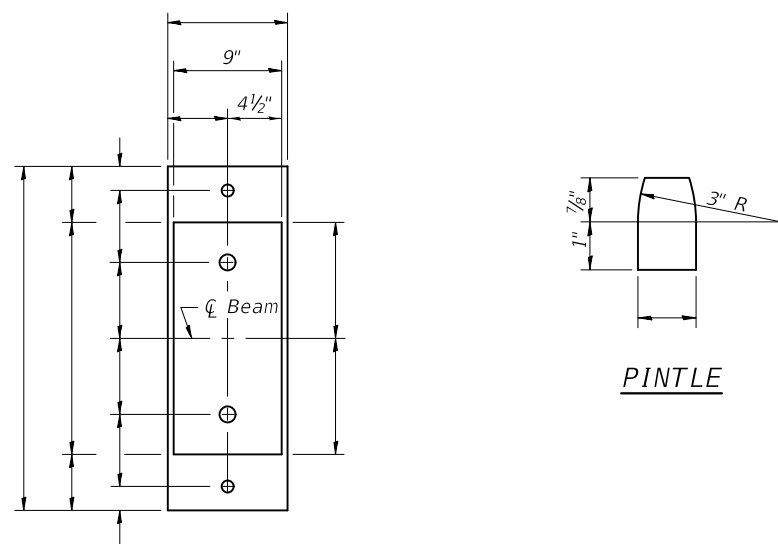


SECTION AT ABUT.



SECTION A-A

FIXED BEARING



PLAN OF TOP & BOTTOM PLATES

PINTLE

Notes:  
 Anchor bolts shall be ASTM F1554 all-thread (or an Engineer-approved alternate material) of the grade(s) and diameter(s) specified. The corresponding specified grade of AASHTO M314 anchor bolts may be used in lieu of ASTM F1554.  
 Anchor bolts shall be installed as each member is erected unless an equivalent temporary means of lateral restraint is used.  
 Beams shall be braced for stability during erection and remain braced until deck is poured and cured.  
 See sheet of for additional details of plate cast with beam.

BILL OF MATERIAL

| Item                     | Unit | Total |
|--------------------------|------|-------|
| Anchor Bolts $\emptyset$ | Each |       |

PI-2FB 2-17-2017

|             |              |            |           |
|-------------|--------------|------------|-----------|
| FILE NAME = | USER NAME =  | DESIGNED - | REVISED - |
|             |              | CHECKED -  | REVISED - |
|             | PLOT SCALE = | DRAWN -    | REVISED - |
|             | PLOT DATE =  | CHECKED -  | REVISED - |

STATE OF ILLINOIS  
 DEPARTMENT OF TRANSPORTATION

BEARING DETAILS  
 STRUCTURE NO.

|                           |         |        |              |           |
|---------------------------|---------|--------|--------------|-----------|
| F.A. RTE.                 | SECTION | COUNTY | TOTAL SHEETS | SHEET NO. |
|                           |         |        |              |           |
| CONTRACT NO.              |         |        |              |           |
| ILLINOIS FED. AID PROJECT |         |        |              |           |