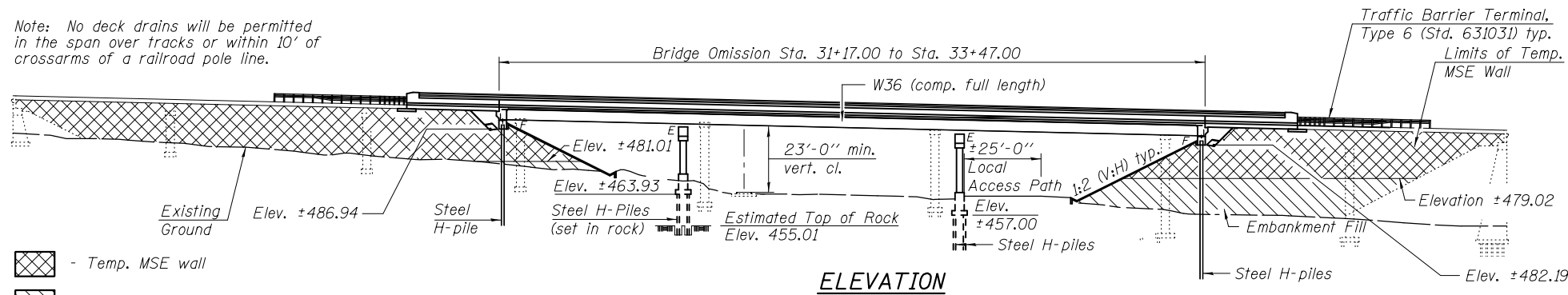


Bench Mark: BM#101 - Elev. 492.43 Chiseled "□" on NE wingwall of S.N. 006-0110

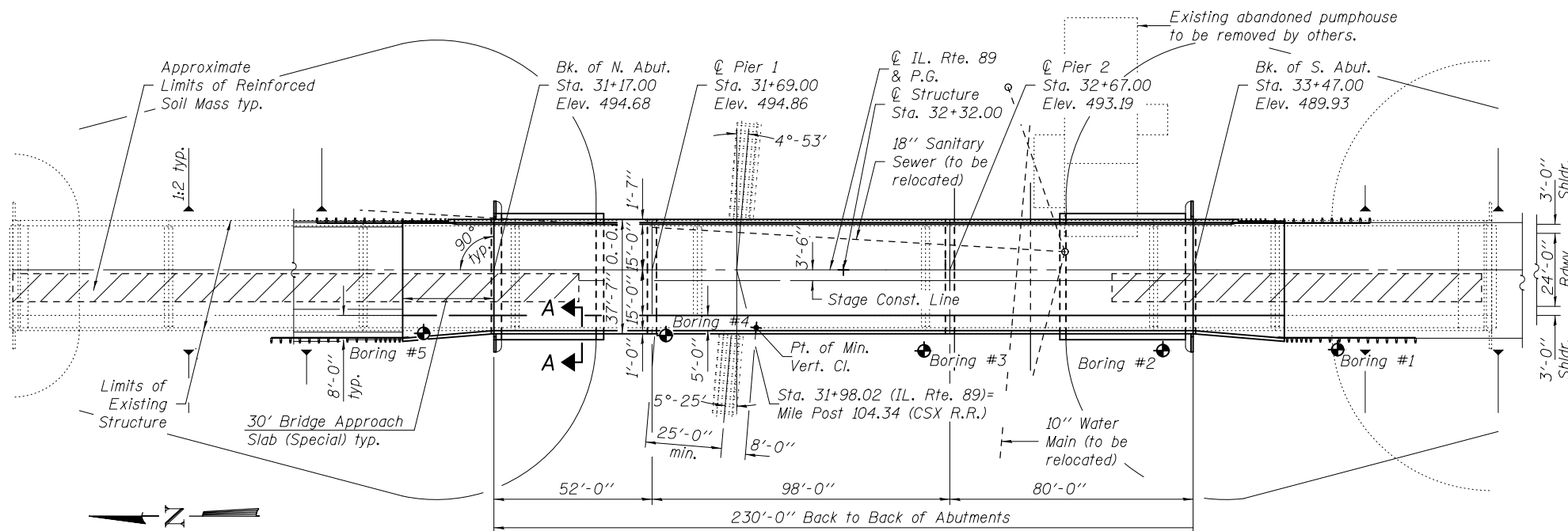
Existing Structure: S.N. 006-0110, originally built in 1936 as S.A. Route 21. In 1970 the deck was replaced and an interior beam line was added. The existing structure consists of 8 spans - 3 span continuous steel, 4 span continuous steel, and 1 steel simple span. The back to back abutment length is 486'-6" and the out to out bridge width is 36'-9". Structure to be removed and replaced. Traffic to be maintained utilizing stage construction.

Salvage: Existing aluminum rail to be removed from west side of bridge and attached to the new west parapet.

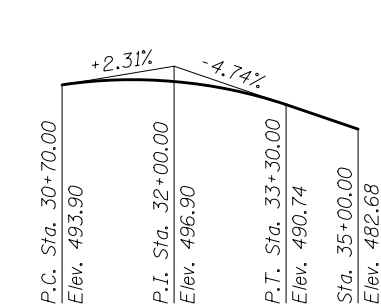
Note: No deck drains will be permitted in the span over tracks or within 10' of crossarms of a railroad pole line.



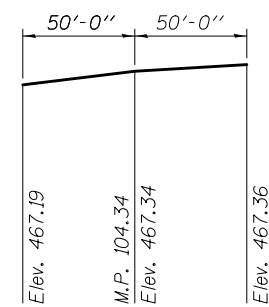
- Temp. MSE wall
- Embankment



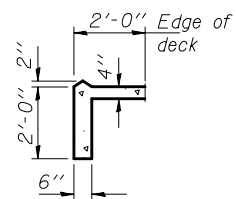
PLAN



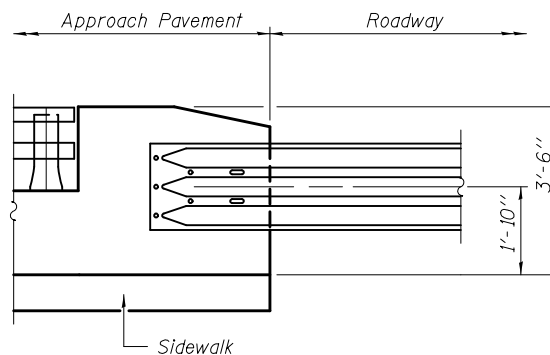
PROFILE GRADE
(along \bar{C} roadway)



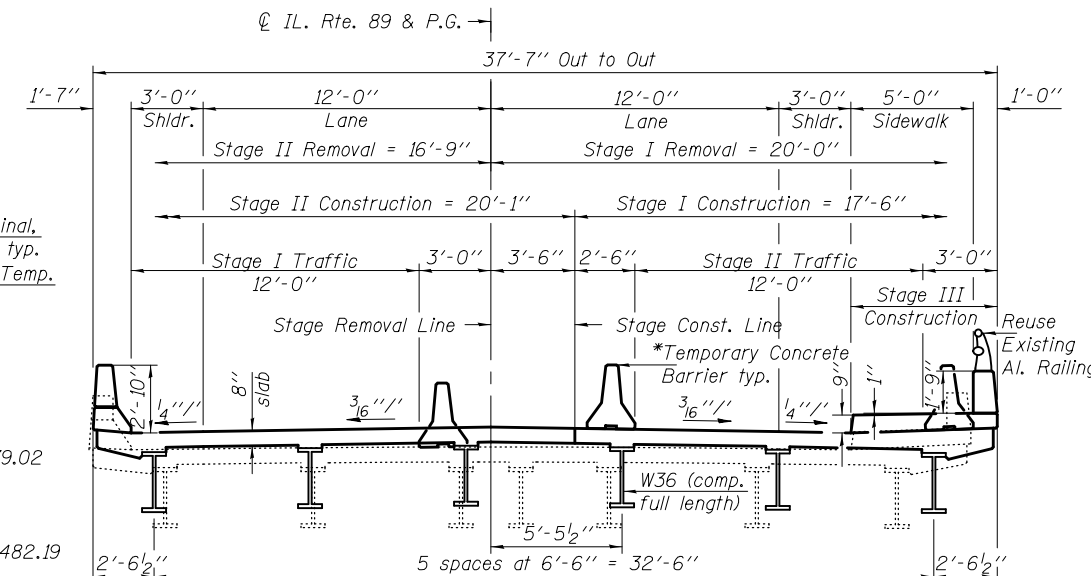
PROFILE GRADE
(Looking South)
Top of Rail CSX Railroad



SECTION A-A



TYPE 6 RAIL ATTACHMENT DETAIL
(West Parapet)



CROSS SECTION
(Looking South)

*To be relocated for Stage III Const.

HIGHWAY CLASSIFICATION

F.A.P. Rte. 698 - IL. Rte. 89
 Functional Class: Other Principal Arterial (Urban)
 ADT: 5700 (2002); 8000 (2022)
 ADTT: 467 (2002) 656 (2022)
 DHV = 210
 Speed: 35 m.p.h (posted); 35 m.p.h. (design)
 Two-way traffic Directional Dist. 50:50

LOADING HL 93

Allow 50#/sq. ft. for future wearing surface.

DESIGN SPECIFICATIONS

2010 AASHTO LRFD Bridge Design Specifications

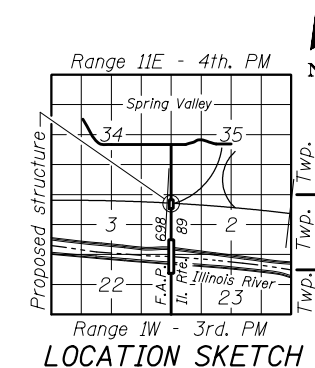
DESIGN STRESSES

FIELD UNITS

$f'_c = 3,500$ psi
 $f_y = 60,000$ psi (reinforcement)
 $f_y = 50,000$ psi (M270 Grade 50W)

SEISMIC DATA

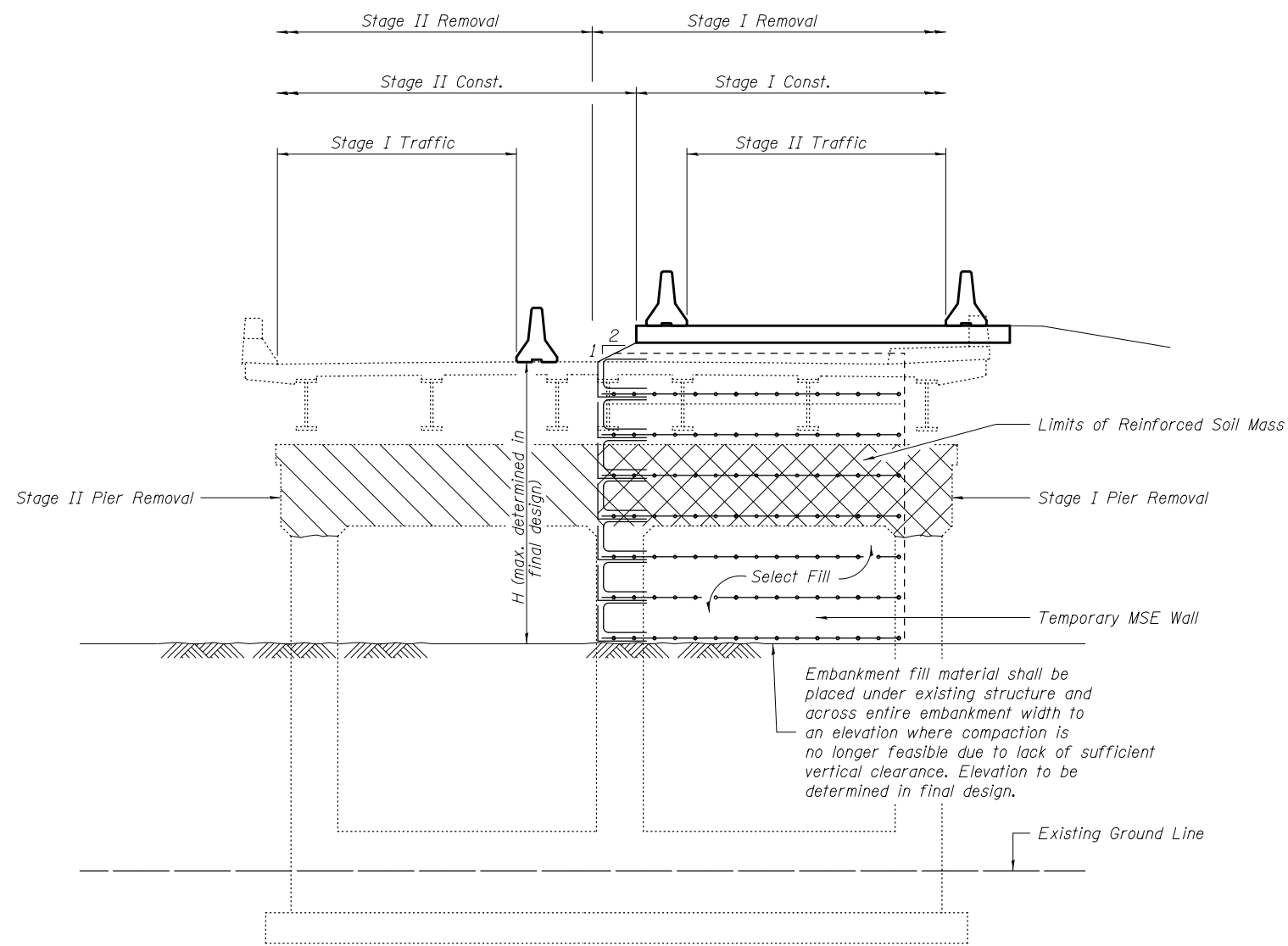
Seismic Performance Zone (SPZ) = 1
 Design Spectral Acceleration at 1.0 sec. (S_{D1}) = 0.038g
 Design Spectral Acceleration at 0.2 sec. (S_{D5}) = 0.090g
 Soil Site Class = B



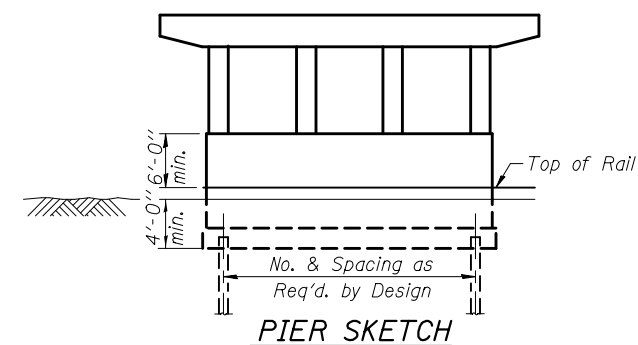
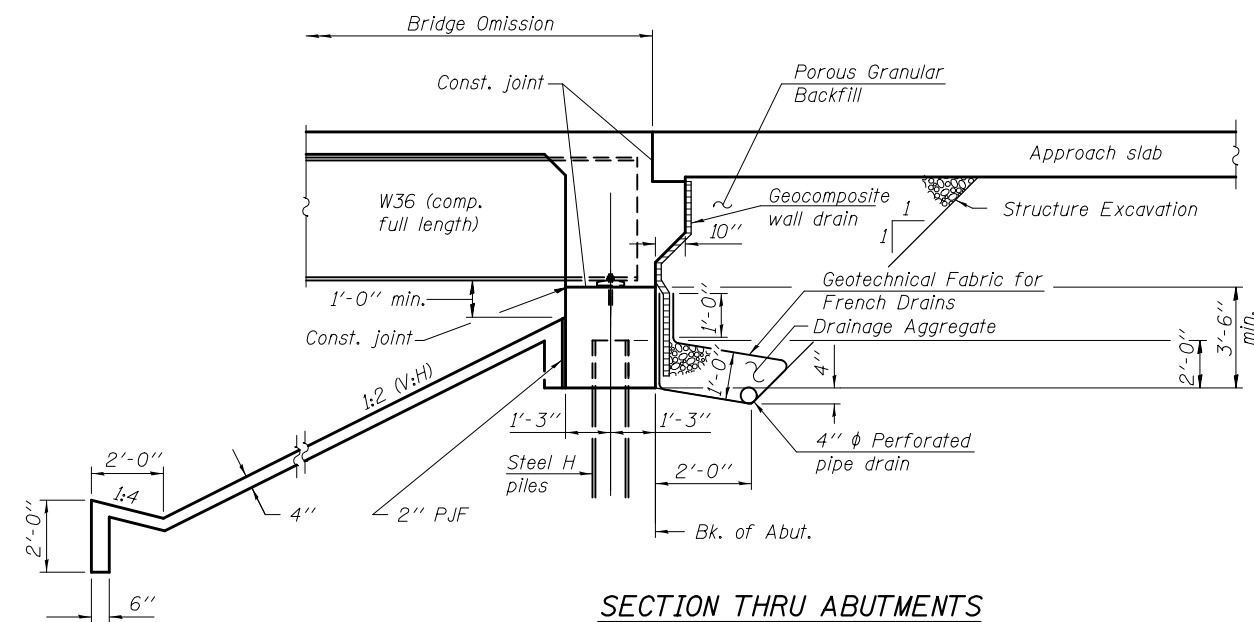
LOCATION SKETCH

GENERAL PLAN & ELEVATION
ILLINOIS ROUTE 89 OVER
CSX RAILROAD
F.A.P. RTE. 698 - SEC. IVBR
BUREAU COUNTY
STATION 32+32.00
STRUCTURE NO. 006-0164

FILE NAME =	USER NAME =	DESIGNED -	REVISD -	STATE OF ILLINOIS DEPARTMENT OF TRANSPORTATION	F.A.P. RTE. 698	SECTION IVBR	COUNTY BUREAU	TOTAL SHEETS	SHEET NO.
	PLOT SCALE =	CHECKED -	REVISD -		SHEET NO. 1 OF 2 SHEETS				
	PLOT DATE =	DRAWN -	REVISD -		ILLINOIS FED. AID PROJECT				
		CHECKED -	REVISD -		CONTRACT NO. 66361				



TEMPORARY MSE WALL DETAIL



DETAILS
ILLINOIS ROUTE 89 OVER
CSX RAILROAD
F.A.P. RTE. 698 - SEC. IVBR
BUREAU COUNTY
STATION 32+32.00
STRUCTURE NO. 006-0164

FILE NAME =	USER NAME =	DESIGNED -	REVISED -
		CHECKED -	REVISED -
	PLOT SCALE =	DRAWN -	REVISED -
	PLOT DATE =	CHECKED -	REVISED -

STATE OF ILLINOIS
DEPARTMENT OF TRANSPORTATION

SHEET NO. 2 OF 2 SHEETS

F.A.P. RTE.	SECTION	COUNTY	TOTAL SHEETS	SHEET NO.
698	IVBR	BUREAU		
CONTRACT NO. 66361				

ILLINOIS FED. AID PROJECT