



# Quick Facts

## Illinois Crash Information 2006

### Emergency Vehicle Crashes

While crashes involving emergency vehicles are relatively rare, an evaluation of these motor vehicle incidents is valuable because these vehicles provide important services and must do so both expeditiously and in a safe manner.

	All Crashes	Crashes Involving Emergency Vehicles
<b>Crashes:</b>	408,851	4,439
<b>Fatal Crashes:</b>	1,136	11
<b>Injury Crashes:</b>	75,376	1,063
<b>Total People Involved:</b>	960,890 <sup>a</sup>	10,831 <sup>a</sup>
<b>Total Fatalities:</b>	1,254 <sup>a</sup>	12 <sup>a</sup>
<b>Total Non-Fatal Injuries:</b>	106,901 <sup>a</sup>	1,636 <sup>a</sup>

<sup>a</sup> Totals include occupants and non-occupants; e.g. 960,890 total people = 951,223 occupants + 9,667 non-occupant

Just 4,439 (1.1%) of all 408,851 motor vehicle incidents in Illinois in 2006 involved emergency vehicles such as ambulance, fire and police vehicles.\* Crashes involving emergency vehicles accounted for 12 (1.0%) of all 1,254 traffic fatalities.

### Emergency Vehicles on Call

There were a total of 556 crashes in Illinois in 2006 specifically involving emergency vehicles on call. No fatalities resulted from these crashes in Illinois in 2006.

### Emergency Vehicle Types

More police vehicles were involved in crashes, fatal crashes and injury crashes than ambulance and fire vehicles.<sup>†,‡</sup>

EMERGENCY VEHICLE INVOLVEMENT <sup>†</sup>	TOTAL CRASHES	FATAL CRASHES		INJURY CRASHES	
	#	#	%	#	%
Ambulance	626	0	(0.00)	114	(18.2)
Fire	436	1	(0.23)	77	(17.7)
Police	3,346	10	(0.30)	860	(25.7)
No Emergency Vehicle Involved	404,412	1,125	(0.28)	74,313	(18.4)

\* Emergency vehicles were defined as ambulance, police and fire vehicles plus any vehicle whose use was as an emergency vehicle on call

<sup>†</sup> Where type of emergency vehicle was known; 1.3% of all emergency vehicles involved in crashes were emergency vehicles on call of unknown type

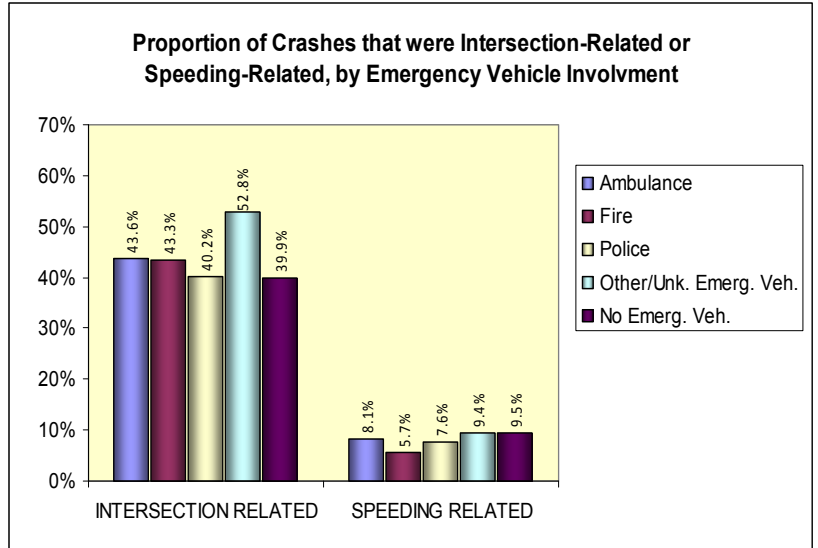
<sup>‡</sup> A few crashes involved more than one type of emergency vehicle, so the totals for each type are not mutually exclusive

Note: Data as of May 23, 2008; with 408,851 crash records, 766,704 vehicle records and 960,890 person records

Funding and development of this fact sheet was provided by: Illinois Department of Transportation, Illinois EMSC (a collaborative program between the Illinois Department of Public Health and Loyola University Medical Center) and the CADE Group at the University of Illinois at Chicago. October 2008

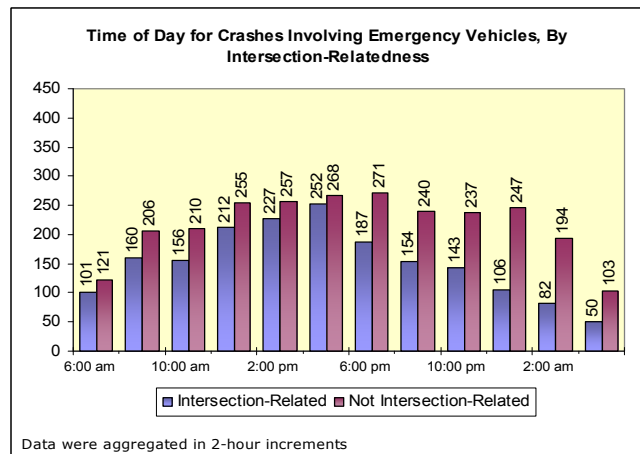
## Intersection-Related and Speeding-Related Crashes

- Crashes involving emergency vehicles were about as likely to be intersection-related (1,830 of 4,439, or 41.2%) as other crashes (161,372 of 404,412, or 39.9%)
- However, they were slightly less likely to be speeding-related<sup>§</sup> (332 of 4,439, or 7.5%) than other crashes (38,535 of 404,412, or 9.5%)
- Crashes involving emergency vehicles *on call* were more likely to be intersection-related (311 of 556, or 55.9%) than other emergency vehicle crashes (1,519 of 3,883, or 39.1%) and crashes in which no emergency vehicle was involved (161,372 of 404,412, or 39.9%)
- Crashes involving emergency vehicles *on call* were slightly less likely to be speeding-related (35 of 556, or 6.3%) than other emergency vehicle crashes (297 of 3,883, or 7.6%) and crashes in which no emergency vehicle was involved (38,535 of 404,412, or 9.5%)



## Time of Day

- Crashes involving emergency vehicles peaked during the afternoon hours, with 11.7% of all such crashes occurring between 4:00 PM and 6:00 PM.
- 35.8% of emergency vehicle crashes between 6:00 pm and 6:00 am were intersection-related, compared with 45.7% at other hours.



## Crashes Involving Police Evasion

- 640 crashes in Illinois in 2006 involved drivers trying to evade police vehicles\*\*
- These crashes represent 0.16% of all 408,851 crashes and 7 (0.62%) of all 1,136 fatal crashes in Illinois in 2006
- 122 (19.1%) of these 640 crashes were also speeding-related

<sup>§</sup> Speeding-related crashes were defined as crashes in which at least one driver in the crash was driving too fast for conditions or in which exceeding the speed limit or excessive speed for conditions was listed by police as a cause of the crash

\*\* Police vehicles themselves were also involved in 106 (16.6%) of these 630 collisions