

Quick Facts

Illinois Crash Information 2009

Young Drivers (Aged 16 to 20)

Young drivers have less driving experience than older drivers, so an evaluation of their involvement in motor vehicle incidents is particularly important.

	All Crashes	Crashes Involving One or More Young Drivers (Age 16-20)
Crashes:	292,439	55,886
Fatal Crashes:	832	115
Injury Crashes:	63,382	14,067
Total People Involved:	682,674 ^a	153,725 ^a
Total Fatalities:	911 ^a	131 ^a
Total Non-Fatal Injuries:	89,188 ^a	21,293 ^a

^a Totals include occupants and non-occupants; e.g. 682,674 total people = 673,838 occupants + 8,836 non-occupants

Overall, 131 (14.4%) of all 911 traffic fatalities in Illinois in 2009 occurred in crashes involving one or more young drivers (aged 16 to 20). Fatally injured young drivers themselves accounted for 53 (5.8%) of all 911 traffic fatalities in Illinois in 2009. Other people involved in these crashes—including other drivers as well as passengers, pedestrians, pedalcyclists and other non-occupants—accounted for 78 (8.6%) of all 911 traffic fatalities in Illinois in 2009.

Demographics

- 32,889 (54.2%) of all 60,657 young drivers aged 16 to 20 involved in crashes were male, compared with 221,608 (57.6%) of all 384,631 drivers aged 21 & above.[†]
- Young drivers accounted for a disproportionate number of all crashes, as they represented just 572,103 (6.9%) of all 8,301,118 licensed drivers in Illinois but 60,644 (13.6%) of all 445,280 drivers in crashes, 119 (9.4%) of all 1,267 drivers in fatal crashes and 53 (9.2%) of all 573 fatally injured drivers.[‡]

	Percent in Age Group*								
	16-20	21-24	25-34	35-44	45-54	55-64	65-69	70+	Total
Population **	9.1	6.9	17.6	17.1	18.6	14.6	4.8	11.2	100.0
Licensed Drivers ***	6.9	6.7	17.6	17.9	19.9	15.8	5.2	10.0	100.0
Drivers in crashes	13.6	10.5	21.7	18.3	17.1	10.8	2.9	5.1	100.0
Drivers in fatal crashes	9.4	10.3	22.3	17.8	16.7	11.3	3.2	9.1	100.0
Fatally injured drivers	9.2	11.2	18.7	16.2	17.1	10.8	3.1	13.6	100.0

* Ages 16 and above, where age was known

** Source: Census 2010, U.S. Census Bureau

*** Source: Highway Statistics 2009, Federal Highway Administration

[†] Where sex and age were known

[‡] Where age was known

Note: Data as of October 4, 2010; with 292,439 crash records, 539,717 vehicle records and 673,839 person records.

The law regarding the reporting threshold for Property Damage Only crashes was amended effective January 1, 2009, resulting in decreased reporting of crashes in this specific category. It did not affect the reporting of injury or fatal crashes. For details of the reporting amendment, see also <http://app.idph.state.il.us/emsrpt/crash.asp>.

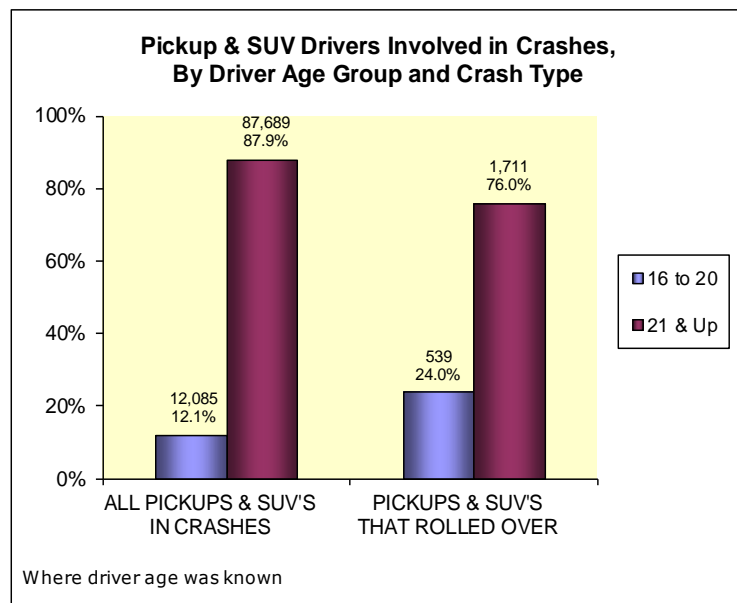
Funding and development of this fact sheet was provided by: Illinois Department of Transportation and Illinois EMSC (a collaborative program between the Illinois Department of Public Health and Loyola University Medical Center). September 2011

Characteristics of crashes involving young drivers

- 9,462 (16.9%) of all 55,886 crashes involving young drivers were speeding-related[§], compared with 27,826 (11.8%) of all 236,553 crashes in which no young driver was involved
- 26,522 (47.5%) of all 55,886 crashes involving young drivers were intersection-related, compared with 85,985 (36.4%) of all 236,553 crashes in which no young driver was involved
- 10,638 (19.0%) of all 55,886 crashes involving young drivers were single vehicle crashes, compared with 60,657 (25.6%) of all 236,553 crashes in which no young driver was involved.
- Seat belt use^{**} was reported for 52,273 (87.5%) of all 59,774 young drivers of passengers cars/light trucks^{††} involved with crashes, compared with 304,503 (85.4%) of all 356,697 older drivers of passengers cars/light trucks.

Pickup & SUV Rollovers

- Young drivers were behind the wheel of just 12.1% of all pickups and SUV's involved in crashes, yet they were behind the wheel during 24.0% of all pickup and SUV rollovers.^{‡‡}
- 15 fatalities (1.6% of all 911 traffic fatalities in Illinois in 2009) resulted from crashes in which young drivers were behind the wheel of pickups and SUV's that suffered rollovers.



[§] "Speeding-related" was defined as crashes in which at least one driver in the crash was driving too fast for conditions or in which exceeding the speed limit or excessive speed for conditions was listed by police as a cause of the crash

^{**} Percent using seat belts was defined as the number of people for whom seat belt use was reported divided by the total number of people involved in crashes.

^{††} Passenger cars and light trucks for this analysis were defined as passenger cars, pickup trucks, vans, minivans and SUV's according to classifications used by the National Highway Traffic Safety Administration.

^{‡‡} Where driver age was known

Geographic Information

- 10,278 (18.4%) of all 55,886 crashes involving young drivers took place on roads that were classified as "rural" road use, compared with 38,705 (16.4%) of all 236,553 crashes in which no young driver was involved.
- 36,886 (66.0%) of all 55,886 crashes involving young drivers took place in Illinois counties outside Cook County, compared with 117,058 (49.5%) of all 236,553 crashes in which no young driver was involved.

	Crashes Involving One or More Young Drivers	Crashes Involving No Young Drivers
	n (%)	n (%)
Chicago	8,140 (14.6%)	73,844 (31.2%)
Suburban Cook County	10,860 (19.4%)	45,651 (19.3%)
Chicago Collar Counties	14,611 (26.1%)	44,169 (18.7%)
Rest of State - Urban	11,705 (20.9%)	36,371 (15.4%)
Rest of State - Rural	10,570 (18.9%)	36,518 (15.4%)

Note: Counties were stratified according to criteria defined by the Behavioral Risk Factor Surveillance System for the Illinois Department of Public Health

Time of Day

The percentage of crashes involving young drivers varied by time of day.

- Crashes that occurred between 4:00 am and 6:59 am were least likely to involve young drivers
- During early morning commute hours for work/school, there was a peak in percentage of crashes involving young drivers
- Other peaks occurred during late afternoon and late evening hours.

