

Quick Facts

Illinois Crash Information 2014

Emergency Vehicle Crashes

While crashes involving emergency vehicles are relatively rare, an evaluation of these motor vehicle incidents is valuable because these vehicles provide important services and must do so both expeditiously and in a safe manner.

	All Crashes	Crashes Involving Emergency Vehicles
Crashes:	296,060	2,839
Fatal Crashes:	845	7
Injury Crashes:	61,081	692
Total People Involved:	691,312 ^a	7,074 ^a
Total Fatalities:	924 ^a	8 ^a
Total Non-Fatal Injuries:	84,649 ^a	1,037 ^a

^a Totals include occupants and non-occupants; e.g. 691,312 total people = 683,188 occupants + 8,124 non-occupants

Just 2,839 (1.0%) of all 296,060 motor vehicle incidents in Illinois in 2014 involved emergency vehicles such as ambulance, fire and police vehicles.* Crashes involving emergency vehicles accounted for 8 (0.9%) of all 924 traffic fatalities.

Emergency Vehicles on Call

There were a total of 346 crashes in Illinois in 2014 specifically involving emergency vehicles on call. One fatality (0.3%) resulted from these 346 crashes in Illinois in 2014.

Emergency Vehicle Types

More police vehicles were involved in crashes, fatal crashes and injury crashes than ambulance and fire vehicles.^{†,‡}

EMERGENCY VEHICLE INVOLVEMENT †	TOTAL	FATAL CRASHES		INJURY CRASHES	
	CRASHES #	#	%	#	%
Ambulance	412	1	(0.24)	79	(19.2)
Fire	284	0	(0.00)	48	(16.9)
Police	2,106	6	(0.28)	555	(26.4)
No Emergency Vehicle Involved	293,221	838	(0.29)	60,389	(20.6)

* Emergency vehicles were defined as ambulance, police and fire vehicles plus any vehicle whose use was as an emergency vehicle on call

† Where type of emergency vehicle was known; 1.9% of all emergency vehicles involved in crashes were emergency vehicles on call of unknown type

‡ A few crashes involved more than one type of emergency vehicle, so the totals for each type are not mutually exclusive

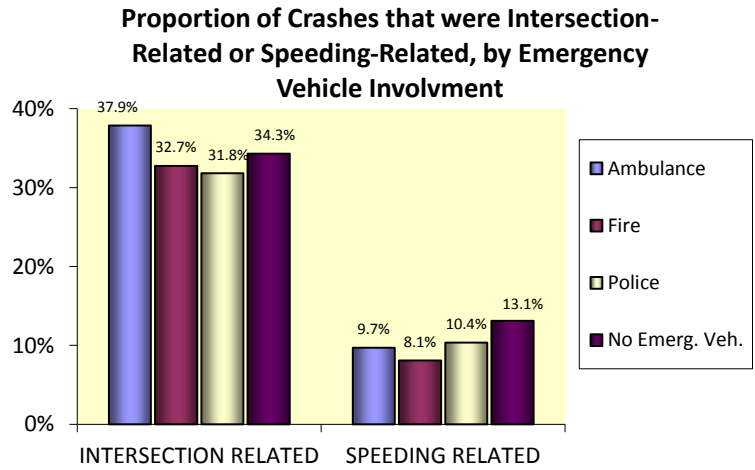
Note: Data as of November 12, 2015; with 296,060 crash records, 552,538 vehicle records and 692,412 person records.

The law regarding the reporting threshold for Property Damage Only crashes was amended effective January 1, 2009, resulting in decreased reporting of crashes in this specific category. It did not affect the reporting of injury or fatal crashes. For details of the reporting amendment, see also <http://app.idph.state.il.us/emsrpt/crash.asp>.

Funding and development of this fact sheet was provided by: Illinois Department of Transportation and Illinois EMSC (a collaborative program between the Illinois Department of Public Health and Loyola University Medical Center). February 2016

Intersection-Related and Speeding-Related Crashes

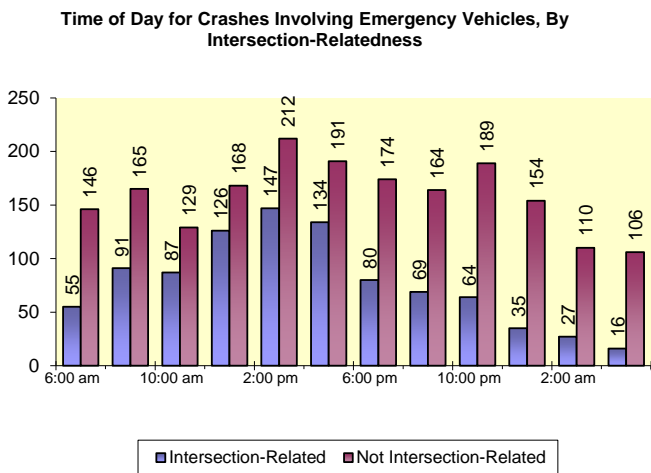
- Crashes involving emergency vehicles were about as likely to be intersection-related (931 of 2,839, or 32.8%) as other crashes (100,605 of 293,221, or 34.3%).
- They were slightly less likely to be speeding-related[§] (282 of 2,839, or 9.9%) than other crashes (38,433 of 293,221, or 13.1%).
- Crashes involving emergency vehicles *on call* were more likely to be intersection-related (162 of 346, or 46.8%) than other emergency vehicle crashes (769 of 2,493, or 30.8%) and crashes in which no emergency vehicle was involved (100,605 of 293,221, or 34.3%).
- Crashes involving emergency vehicles *on call* were less likely to be speeding-related (19 of 346, or 5.5%) as other emergency vehicle crashes (263 of 2,493, or 10.5%) and also less likely than crashes in which no emergency vehicle was involved (38,433 of 293,221, or 13.1%).



Where emergency vehicle type was known

Time of Day

- Crashes involving emergency vehicles peaked during the afternoon hours, with 12.6% of all such crashes occurring between 2:00 PM and 4:00 PM.
- 38.8% of emergency vehicle crashes between 6:00 am and 6:00 pm were intersection-related, compared with 24.5% at other hours.



Data aggregated in 2-hour increments

Crashes Involving Police Evasion

- 565 crashes in Illinois in 2014 involved drivers trying to evade police vehicles**
- These crashes represent 0.2% of all 296,060 crashes and 9 (1.1%) of all 845 fatal crashes in Illinois in 2014
- 164 (29.0%) of these 565 crashes were also speeding-related

[§] Speeding-related crashes were defined as crashes in which at least one driver in the crash was driving too fast for conditions or in which exceeding the speed limit or excessive speed for conditions was listed by police as a cause of the crash

** Police vehicles themselves were also involved in 56 (9.9%) of these 565 collisions