



Brine Spray-Bar System

District 1

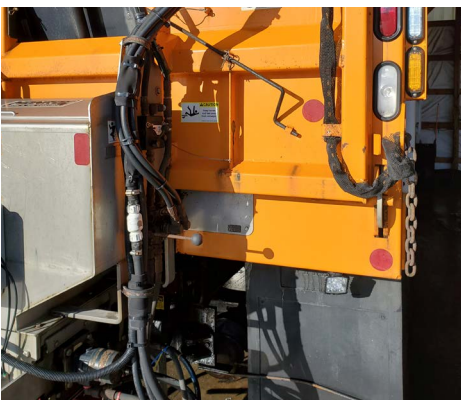
Problem:

Over several years, lane miles, bridges and wider-lane bridges have been added to the area to accommodate an increase in traffic. We needed a quick and easy way to pre-treat the increased number of bridge decks, hills and hazardous approaches without using salt and expensive equipment while keeping all trucks on the road. Unfortunately, most brine systems require lengthy setups or a skid-mounted assembly, which requires a loader to mount and dismount into a truck, putting it out of service.



Solution:

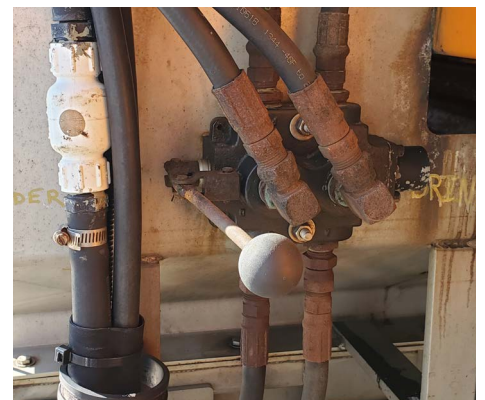
The Brine Spray-Bar System is cost effective and easily added to any truck without interfering with its normal daily operations. The setup was created primarily with current stock available in the yard and the truck's existing resources. In comparison with the cost of traditional brine setups, which range from \$15,000-\$30,000, the Brine Spray-Bar System runs approximately \$1,000. The system allows for efficient and effective pre-treating, decreasing the potential for icing in potentially hazardous areas and increasing motorist safety.



The system can be installed or removed easily by two people, one if necessary, in under 5 minutes.



The system is easy to attach to any truck and won't compromise equipment dedicated to snow and ice operations.



The system can be created and installed entirely in-house.