



# Aggregate Shoulder Spreader Chute

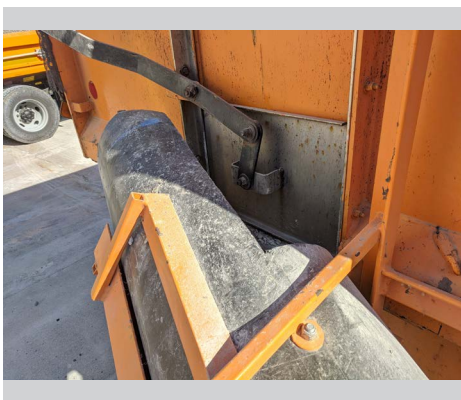
## District 9

### Problem:

When placing shoulder stone or rip rap, traditional methods such as a gravel box discharge aggregate at height, making it hard to control placement and reduce splatter. In addition, in a moving operation, a gravel box conveyor method drastically slows effectiveness due to wait times required to reload or switch to the next truck.

### Solution:

With the lightweight gravel chute, trucks can accurately place shoulder stone or 3-inch rip rap on the edge of pavement in an efficient manner. The chute was designed to release product 6-12 inches from the targeted area, effectively controlling splatter and keeping debris off the road. The center gate on the tailgate controls the amount of product discharged from the chute, while the concrete chute cleaner clears loose gravel once the truck is emptied.



The center gate located on the tailgate controls the amount of gravel entering the chute.



The chute releases gravel approximately 6-12 inches from the pavement edge.



The chute cleaner clears loose gravel after the truck is emptied.