

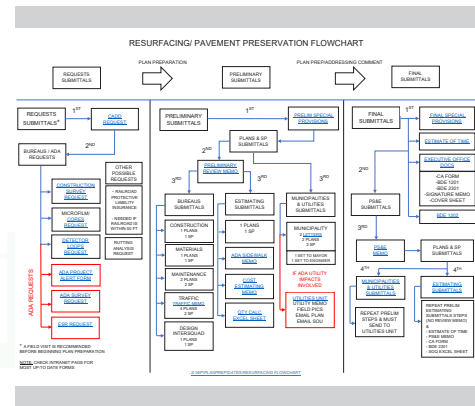


Resurfacing & Pavement Preservation Design Guide

District 1

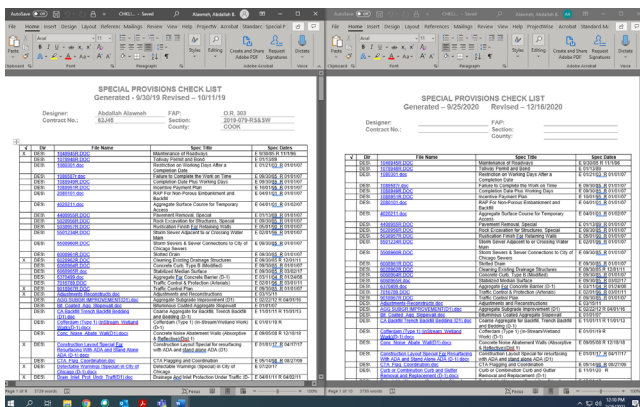
Problem:

Every year, new Development And Training of Engineers program participants join the plan preparation section in the Bureau of Design. Currently, no concise guide exists for plan preparation. The process can be difficult to grasp for newcomers as there are many requirements and sequential steps. As a result, supervisors and senior engineers put in extensive time and effort to retrain the process to new DATE engineers annually.

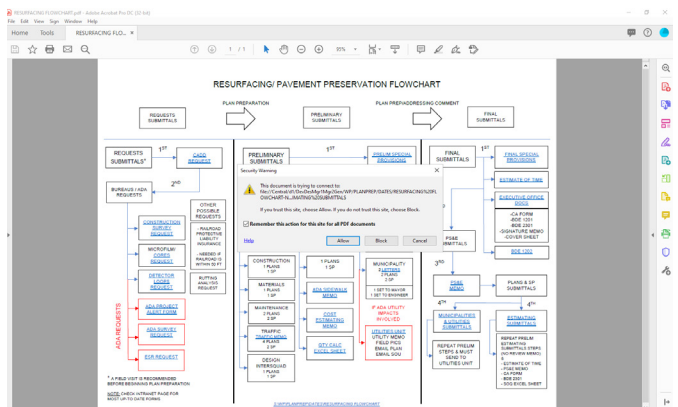


Solution:

The Resurfacing & Pavement Preservation Design Guide provides a flowchart as well as all applicable documents and forms needed throughout the plan preparation process for typical resurfacing and pavement preservation projects. This tool lays out the plan preparation process and all required tasks in a sequential manner, includes hyperlinks to all required forms, and guides the engineer through the process with examples, thereby simplifying the process and providing a concise guide for new DATE engineers.



Everything trainees need is included via sequential tasks and links to additional documents.



The flowchart guides users through the training process. This method would streamline training and free up DATE engineers for other learning opportunities.

