

SYSTEM GOALS

GOAL 1 ECONOMY

Improve Illinois' economy by providing transportation infrastructure that supports the efficient movement of people and goods.

GOAL 2 LIVABILITY

Enhance the quality of life across the state by ensuring that transportation investments advance local goals, provide multimodal options, and preserve the environment.

GOAL 3 MOBILITY

Support all modes of transportation to improve accessibility and safety by improving connections.

GOAL 4 RESILIENCY

Proactively assess, plan, and invest in the state's transportation system to ensure that our infrastructure is prepared to sustain and recover from extreme events and other disruptions.

GOAL 5 STEWARDSHIP

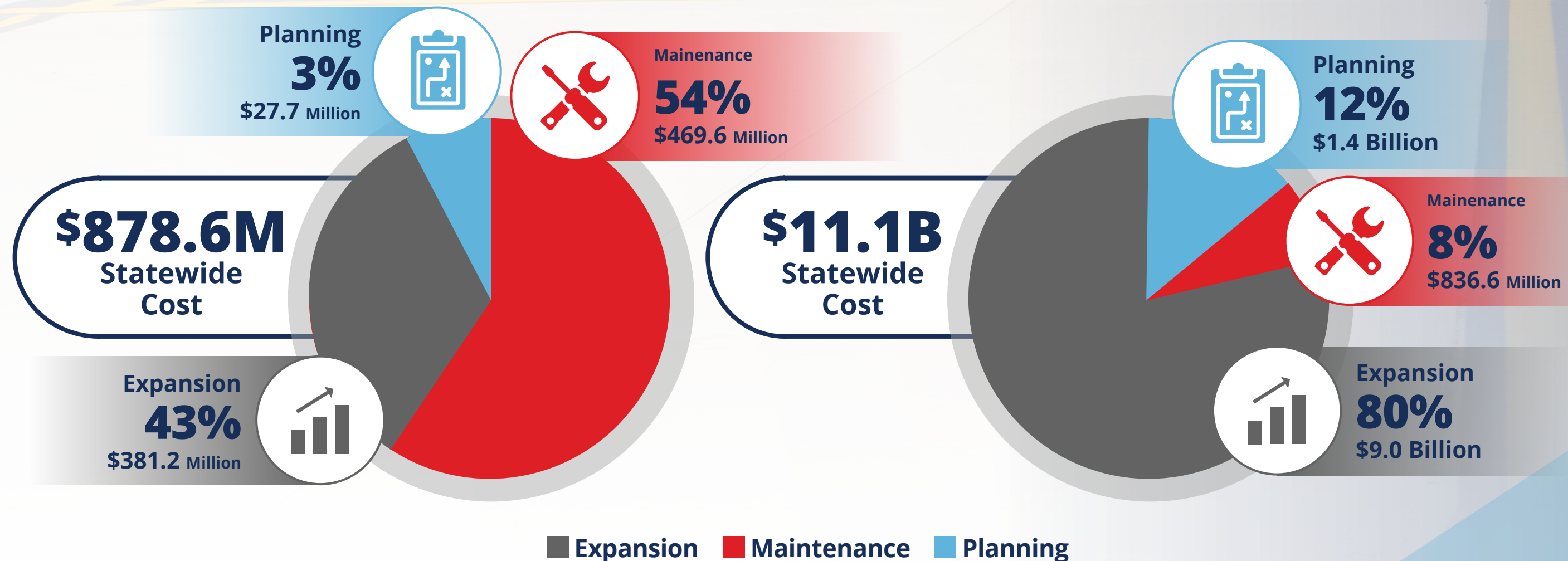
Safeguard existing funding and increase revenues to support system maintenance, modernization, and strategic growth of Illinois' transportation system.

SYSTEMWIDE COST ESTIMATES

Systemwide cost estimates for Illinois are based on performance measures (PMs), facility and service objectives (FSO), and systemwide minimums. Projects were developed for airports with identified deficiencies needed to maintain or expand to continue to meet system performance Goals and objectives and meet future performance targets. Systemwide, the cost of these projects is estimated to be \$11.1 billion in needed planning, maintenance, and expansion projects. Planning projects are those needed to develop planning documents and procedures at current system airports. Maintenance projects are those needed to maintain the existing aviation system. Expansion projects are those needed for new infrastructure or new program projects at current system airports.

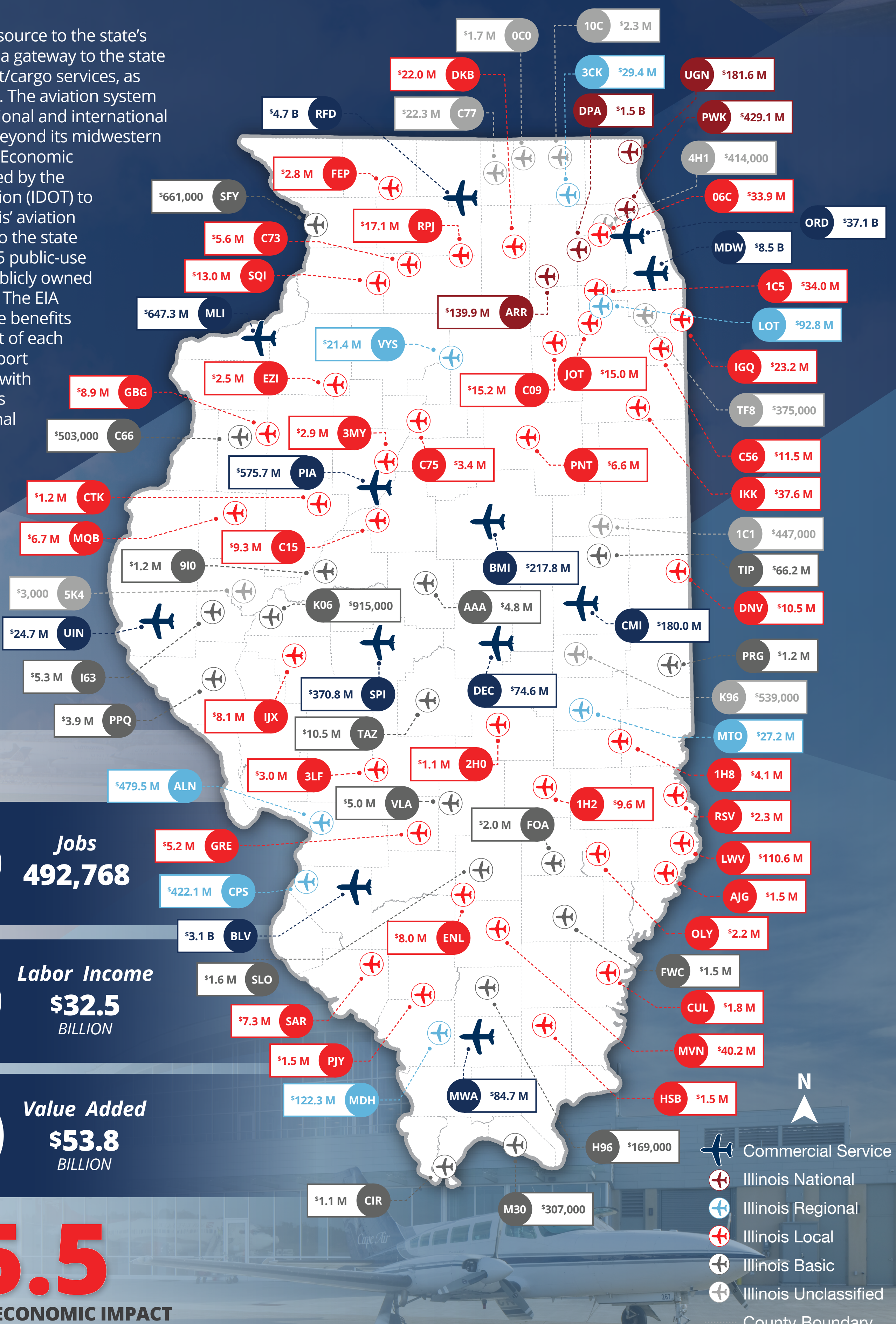
Project Cost Estimate by Project Type excluding O'Hare and Midway

Project Cost Estimate by Project Type including O'Hare and Midway



ECONOMIC IMPACT OF ILLINOIS AIRPORTS

Illinois' aviation system is a vital resource to the state's economy. Illinois airports serve as a gateway to the state by providing passenger and freight/cargo services, as well as employment opportunities. The aviation system in Illinois connects the state to national and international communities and economies far beyond its midwestern borders. The 2019 Illinois Aviation Economic Impact Analysis (EIA) was conducted by the Illinois Department of Transportation (IDOT) to understand and quantify the Illinois' aviation system's economic contributions to the state economy. The analysis includes 85 public-use airport facilities, made up of 81 publicly owned and four privately owned airports. The EIA utilized 2019 data to determine the benefits and establish the economic impact of each individual airport related to on-airport employment and visitor spending with an additional freight/cargo analysis also being completed at the regional and statewide levels.



STATEWIDE ECONOMIC IMPACT



BILLION IN TOTAL ECONOMIC IMPACT

* includes off-airport air cargo impact

- Commercial Service
- Illinois National
- Illinois Regional
- Illinois Local
- Illinois Basic
- Illinois Unclassified
- County Boundary